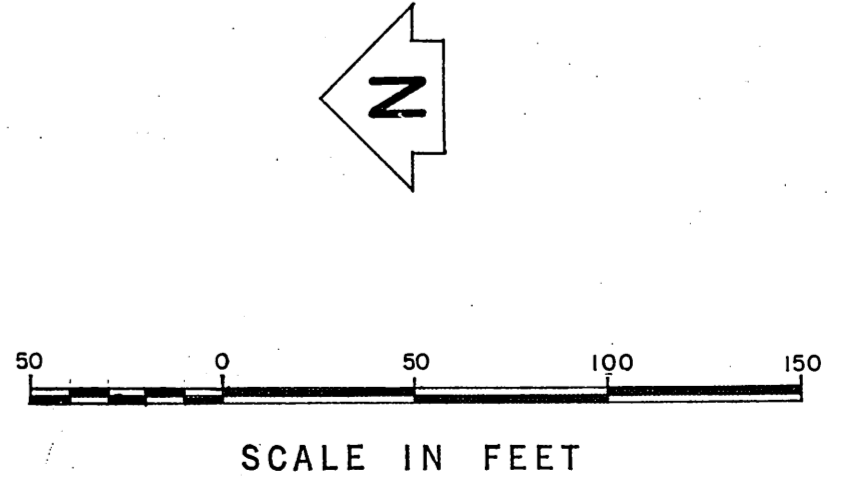
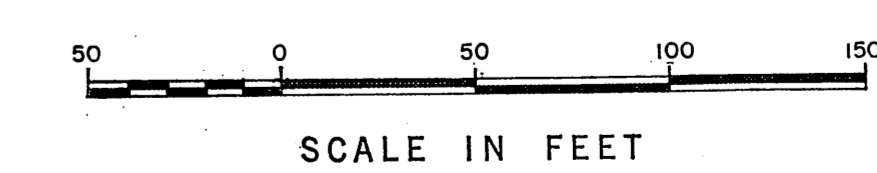
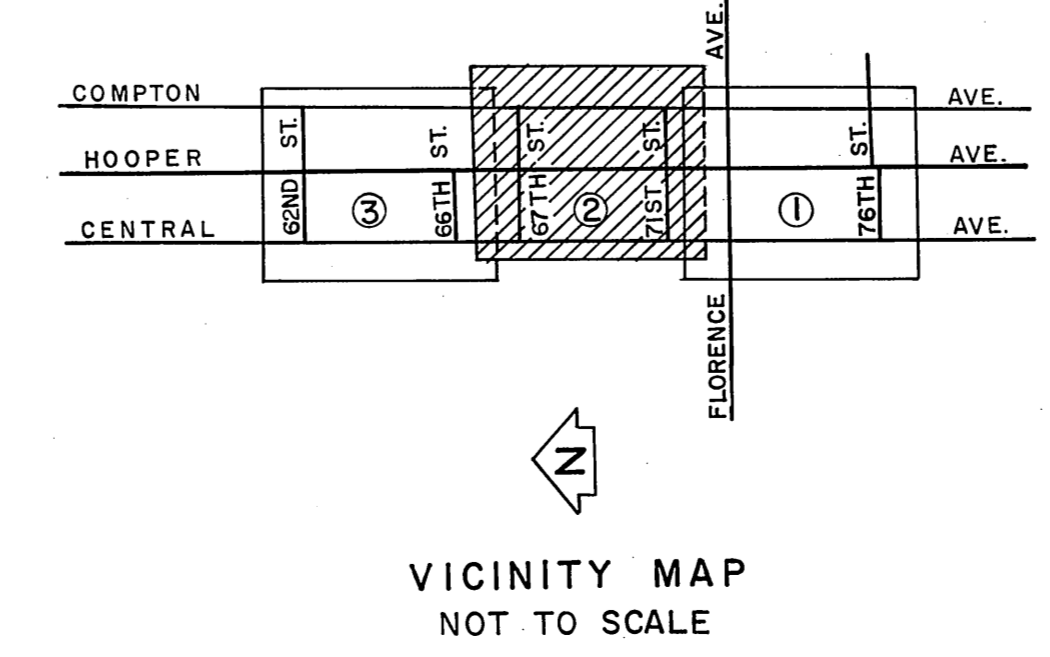
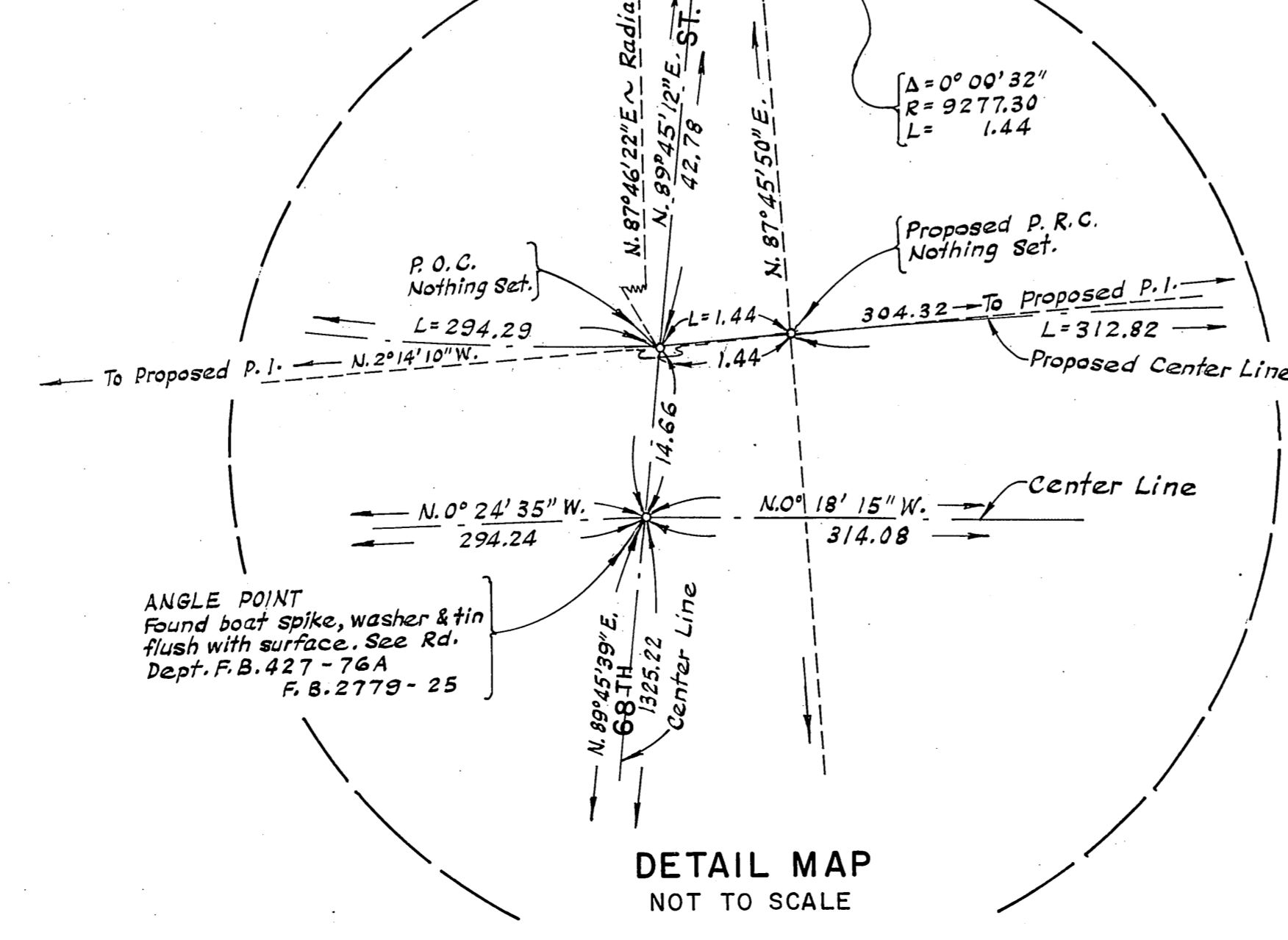
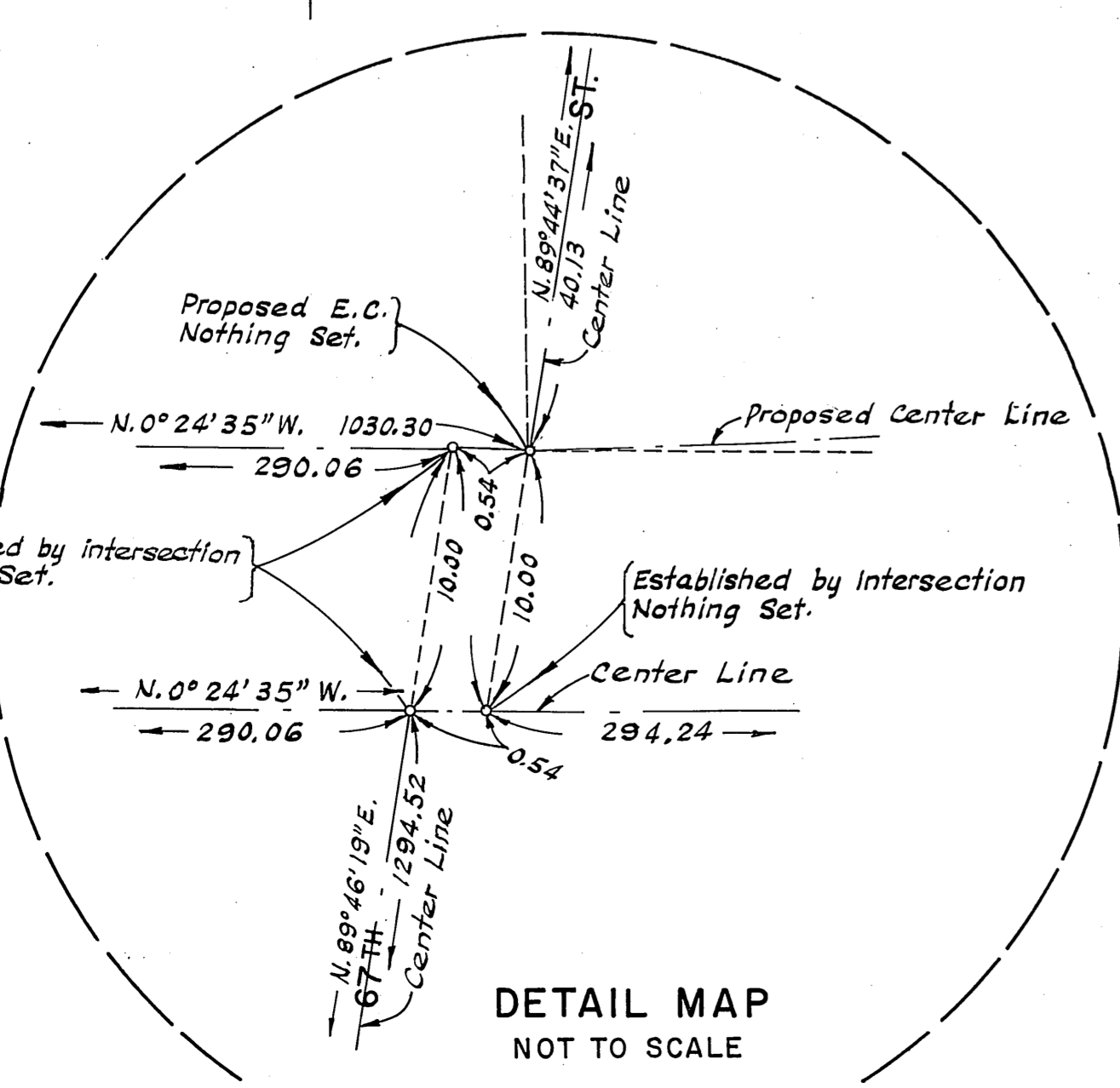
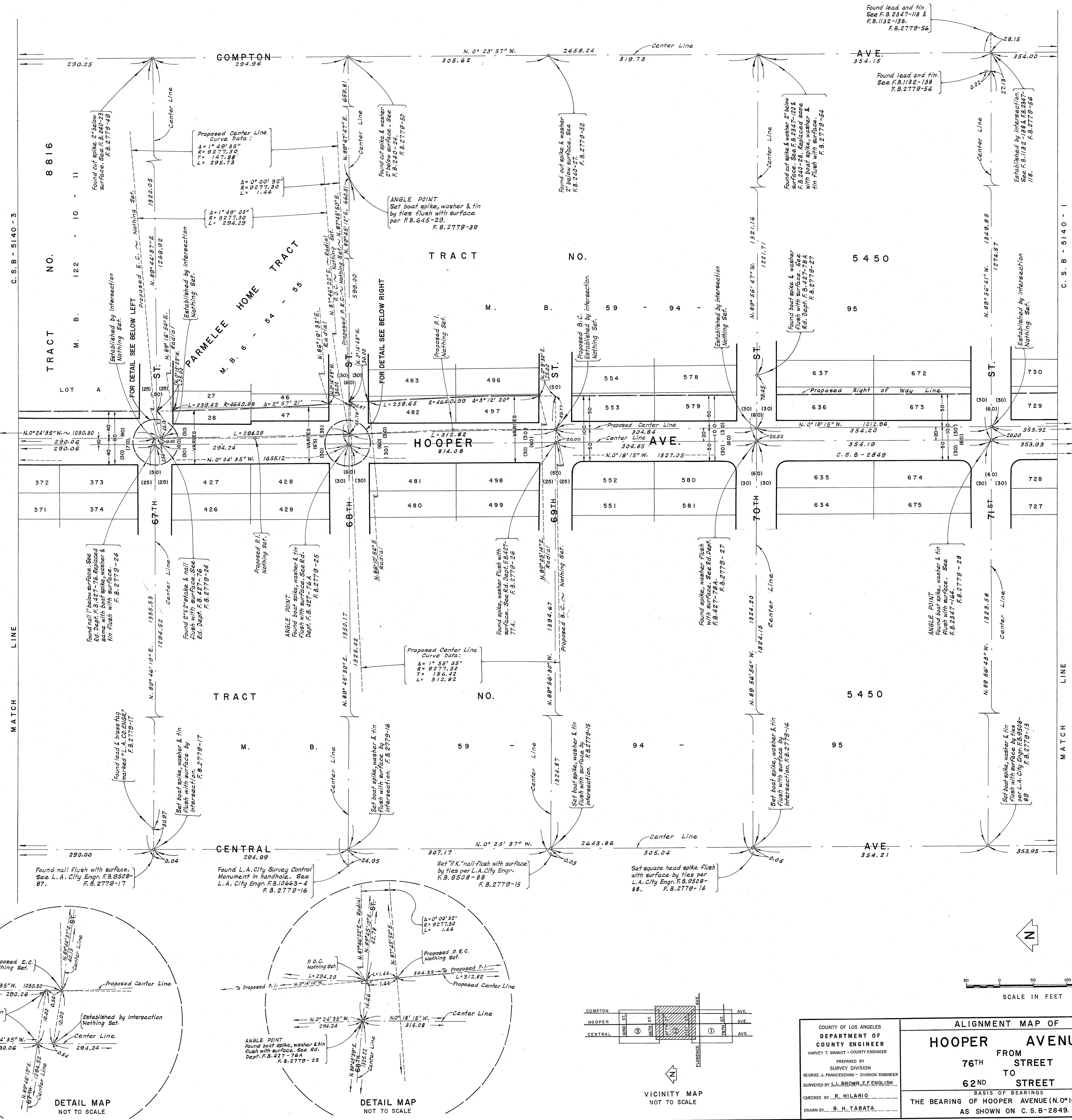


NOTE:  
FOR THE ESTABLISHMENT OF THE EXISTING CENTER LINE OF  
HOOPER AVENUE FROM 76TH STREET TO FLORENCE AVENUE  
SEE C. S. B - 2849.



COUNTY OF LOS ANGELES DEPARTMENT OF COUNTY ENGINEER HARVEY T. BRANDT - COUNTY ENGINEER PREPARED BY SURVEY DIVISION GEORGE J. FRANCISCHINI - DIVISION ENGINEER SURVEYED BY L.L. BROWN, F.F. ENGLISH CHECKED BY R. HILARIO DRAWN BY B. H. TABATA	<b>ALIGNMENT MAP OF</b> <b>HOOPER AVENUE</b> FROM <b>76TH STREET</b> TO <b>62ND STREET</b>		COUNTY SURVEYOR'S MAP NO. <b>B-5140</b> SHEET 1 OF 3 SHEETS FILED: <i>John B. 19 21</i> DEPUTY SURVEYOR NOV. 1961 - DEC. 1968	REVISION NO. BY DATE
	BASIS OF BEARINGS <b>THE BEARING OF HOOPER AVENUE (N. 0° 10' 25" W.)</b> AS SHOWN ON C. S. B - 2849.			REFERENCE F. B. 2347, F. B. 2779
	JOB NUMBER 0095.42			INDEX MAP NO. 7
	SCALE IN FEET 0 50 100 150			



COUNTY OF LOS ANGELES DEPARTMENT OF COUNTY ENGINEER HARVEY T. BRANDT - COUNTY ENGINEER PREPARED BY SURVEY DIVISION GEORGE J. FRANCESCHINI - DIVISION ENGINEER SURVEYED BY L.L. BROWN, E.F. ENGLISH CHECKED BY R. HILARIO DRAWN BY B. H. TABATA	<b>ALIGNMENT MAP OF</b> <b>HOOPER AVENUE</b> FROM <b>76TH STREET</b> TO <b>62ND STREET</b>		COUNTY SURVEYOR'S MAP NO. <b>B-5140</b> SHEET 2 OF 3 SHEETS FILED: <i>October 12, 1971</i> <i>H. J. Mitchell</i> DEPUTY SURVEYOR NOV. 1961 - DEC. 1968 REFERENCE F.B. 2347, F.B. 2779 JOB NUMBER 0095.42 INDEX MAP NO. 7
	THE BEARING OF HOOPER AVENUE (N.0°10'25"W.) AS SHOWN ON C.S.B-2849.		REVISION NO. BY DATE

