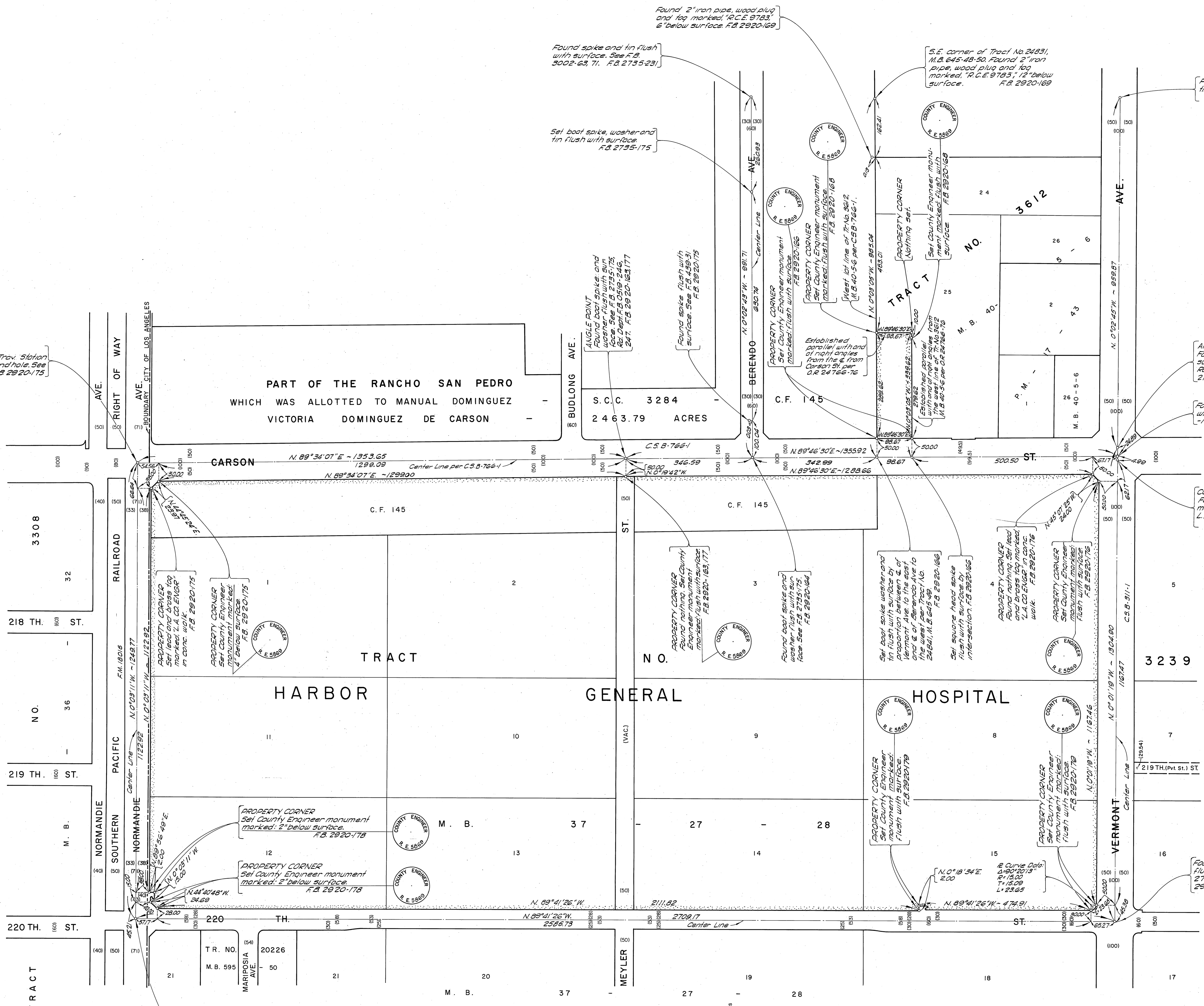


COMPTON A-9  
Found L.A. City Trav. Station  
monument in hand hole. See  
F.B. 2735-136, F.B. 2920-175



Found 2" iron pipe, wood plug  
and tag marked "R.C.E. 9783,"  
6" below surface. F.B. 2920-169

Found spike and tin flush  
with surface. See F.B.  
3002-68, 71, F.B. 2735-231

Set boot spike, washer and  
tin flush with surface  
F.B. 2735-175

S.E. corner of Tract No 24831,  
M.B. 645-48-50. Found 2" iron  
pipe, wood plug and tag  
marked "R.C.E. 9783," 12"  
below surface. F.B. 2920-169

Found spike washer and  
tin flush with surface  
F.B. 2735-193

ANGLE POINT  
Found boot spike and  
washer flush with sur-  
face. See F.B. 439-31,  
Acc. Dept. F.B. 0519-246,  
247, F.B. 2920-163177

Found spike flush with  
surface. See F.B. 2920-175

PROPERTY CORNER  
Set County Engineer monument  
marked flush with surface  
F.B. 2920-166

PROPERTY CORNER  
Set County Engineer monument  
marked flush with surface  
F.B. 2920-168

West lot line of Tr. No. 3612  
M.B. 40-5-6 per C.S. B-766-1,  
N. 0°19'02" W - 995.04

PROPERTY CORNER  
Nothing set.

Set County Engineer monu-  
ment marked flush with  
surface F.B. 2920-168

PART OF THE RANCHO SAN PEDRO  
WHICH WAS ALLOTTED TO MANUAL DOMINGUEZ  
VICTORIA DOMINGUEZ DE CARSON

C.F. 145

C.F. 145

TRACT

GENERAL

HOSPITAL

3239

3308  
218 TH. ST.  
NO. 36

219 TH. ST.  
M.B. 595

220 TH. ST.  
T.R. NO. 20226  
M.B. 595

PROPERTY CORNER  
Set County Engineer monument  
marked 2" below surface  
F.B. 2920-178

PROPERTY CORNER  
Set County Engineer monument  
marked 2" below surface  
F.B. 2920-178

Found boot spike and washer  
flush with surface. See F.B. 2735  
-174, Rd. Dept. F.B. 0419-328A,  
359 A. F.B. 2920-178

PROPERTY CORNER  
Set County Engineer monument  
marked flush with surface  
F.B. 2920-163, 177

Found boot spike and  
washer flush with sur-  
face. See F.B. 2735-175,  
F.B. 2920-164

Set boot spike washer and  
tin flush with surface & of  
Vermont Ave to the east.  
The west line of Tr. No. 175  
is set per Tract No.  
24831, M.B. 645-48-50  
F.B. 2920-166

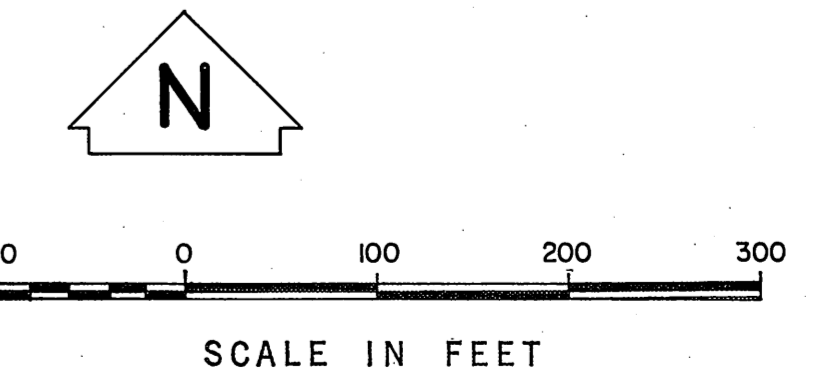
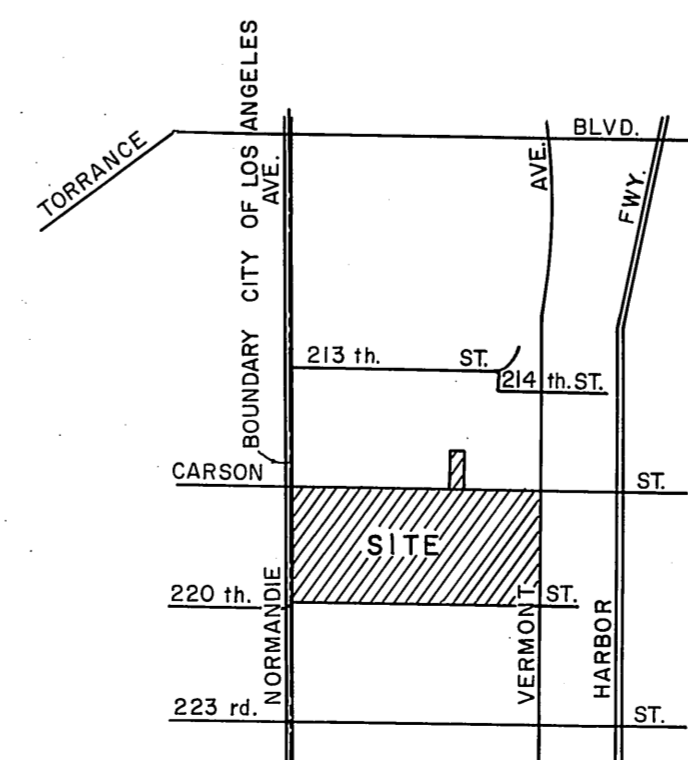
PROPERTY CORNER  
Found nothing. Set lead  
and brass tag marked  
with C.S. B-766-1  
F.B. 2920-176

PROPERTY CORNER  
Set County Engineer  
monument marked  
flush with surface  
F.B. 2920-176

PROPERTY CORNER  
Set County Engineer  
monument marked  
flush with surface.  
F.B. 2920-179

PROPERTY CORNER  
Set County Engineer  
monument marked  
flush with surface.  
F.B. 2920-179

Found boot spike and washer  
flush with surface. See F.B.  
2735-69, Rd. Dept. F.B. 0420-  
2905. F.B. 2920-179



COUNTY OF LOS ANGELES  
DEPARTMENT OF  
COUNTY ENGINEER  
HARVEY T. BRANDT - COUNTY ENGINEER

PREPARED BY  
SURVEY DIVISION  
GEORGE J. FRANCESCHINI - DIVISION ENGINEER

SURVEYED BY E.F. ENGLISH

CHECKED BY H. HOLMAN

DRAWN BY S. KURACHI

BOUNDARY MAP OF  
**HARBOR GENERAL HOSPITAL**

FOR TOPOGRAPHY, SEE SURVEY DIVISION  
FILE MAP NO. PT 502 -1, 2

BASIS OF BEARINGS  
THE BEARING OF CARSON STREET (N. 89° 46' 30" E.)  
AS SHOWN ON C.S. B-766-1

COUNTY SURVEYOR'S MAP NO. <b>B-5142</b>		REVISION
SHEET 1 OF 1 SHEET		NO. BY DATE
FILED: <i>March 29, 1971</i>		
SURVEYED		
MARCH, 1965 - MARCH, 1971		
REFERENCE F.B. 2735 F.B. 2920		
JOB NUMBER 0022.02	INDEX MAP NO. 28	