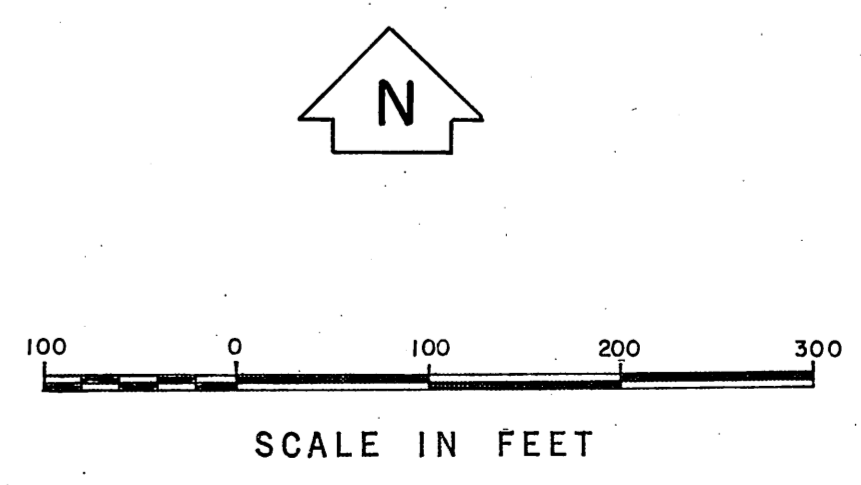
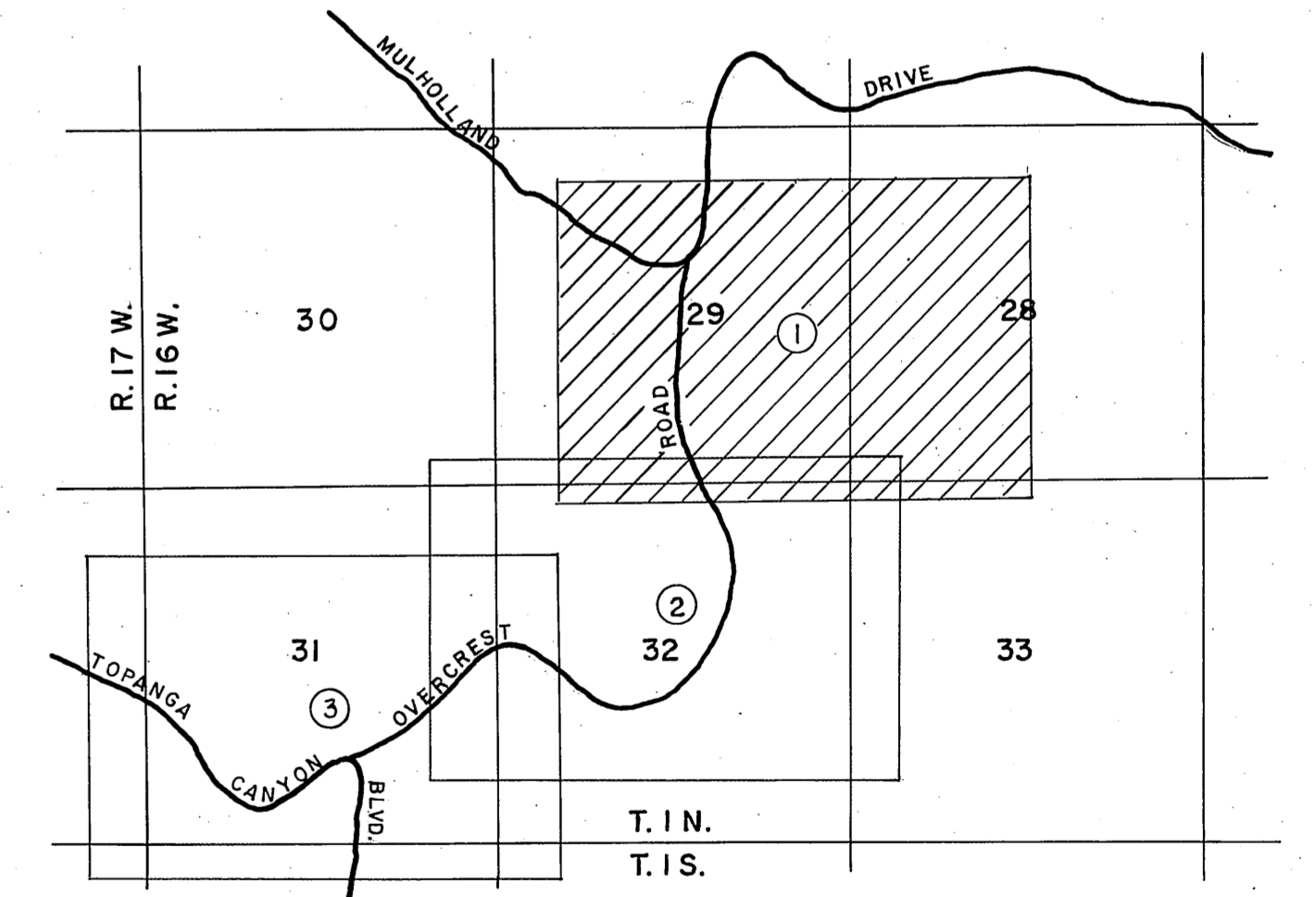
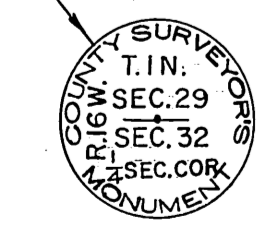


REVISIONS:
 ① Record for Mulholland Drive corrected.
 ② Bearing of the S'ly line of Section 29 corrected.



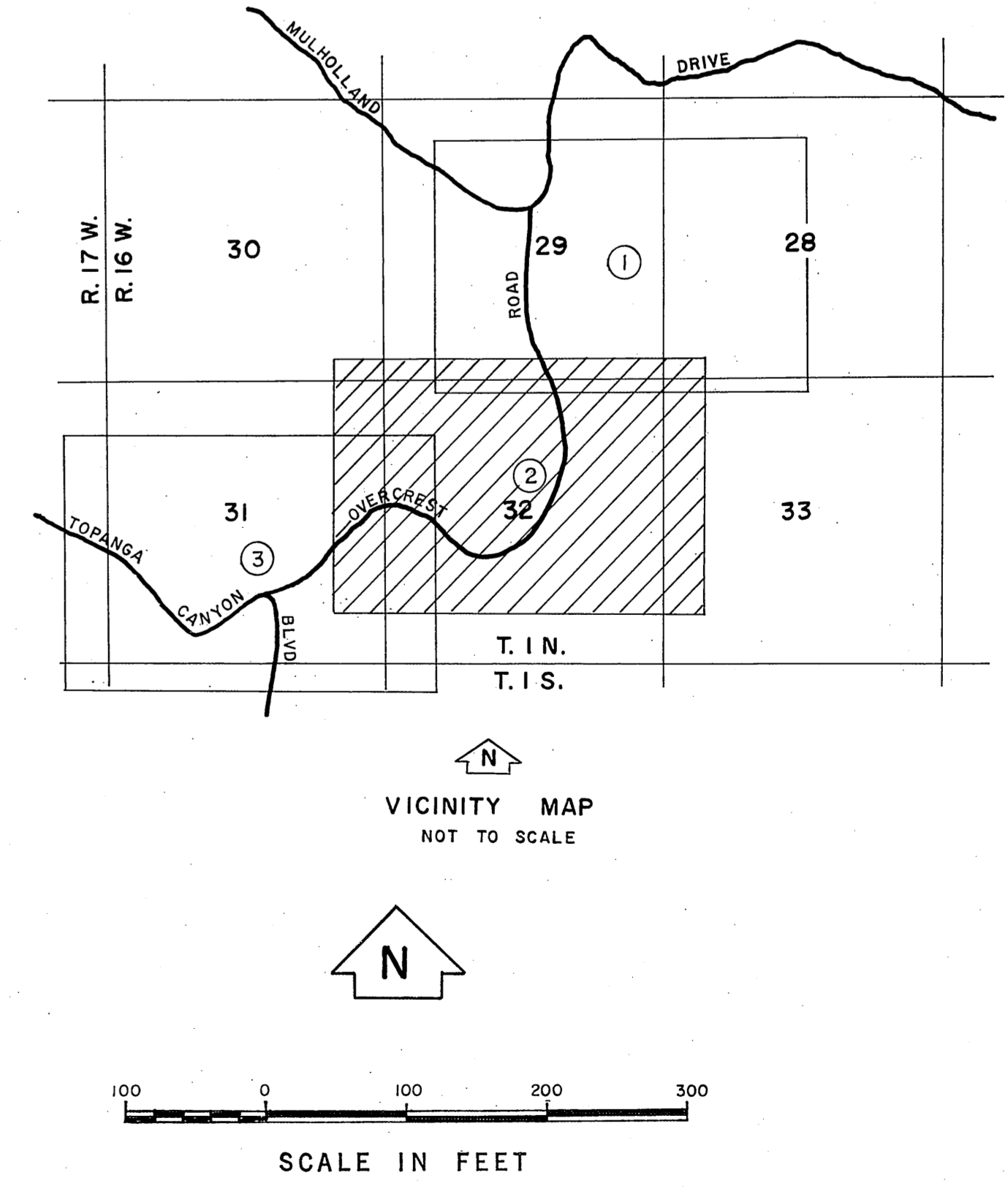
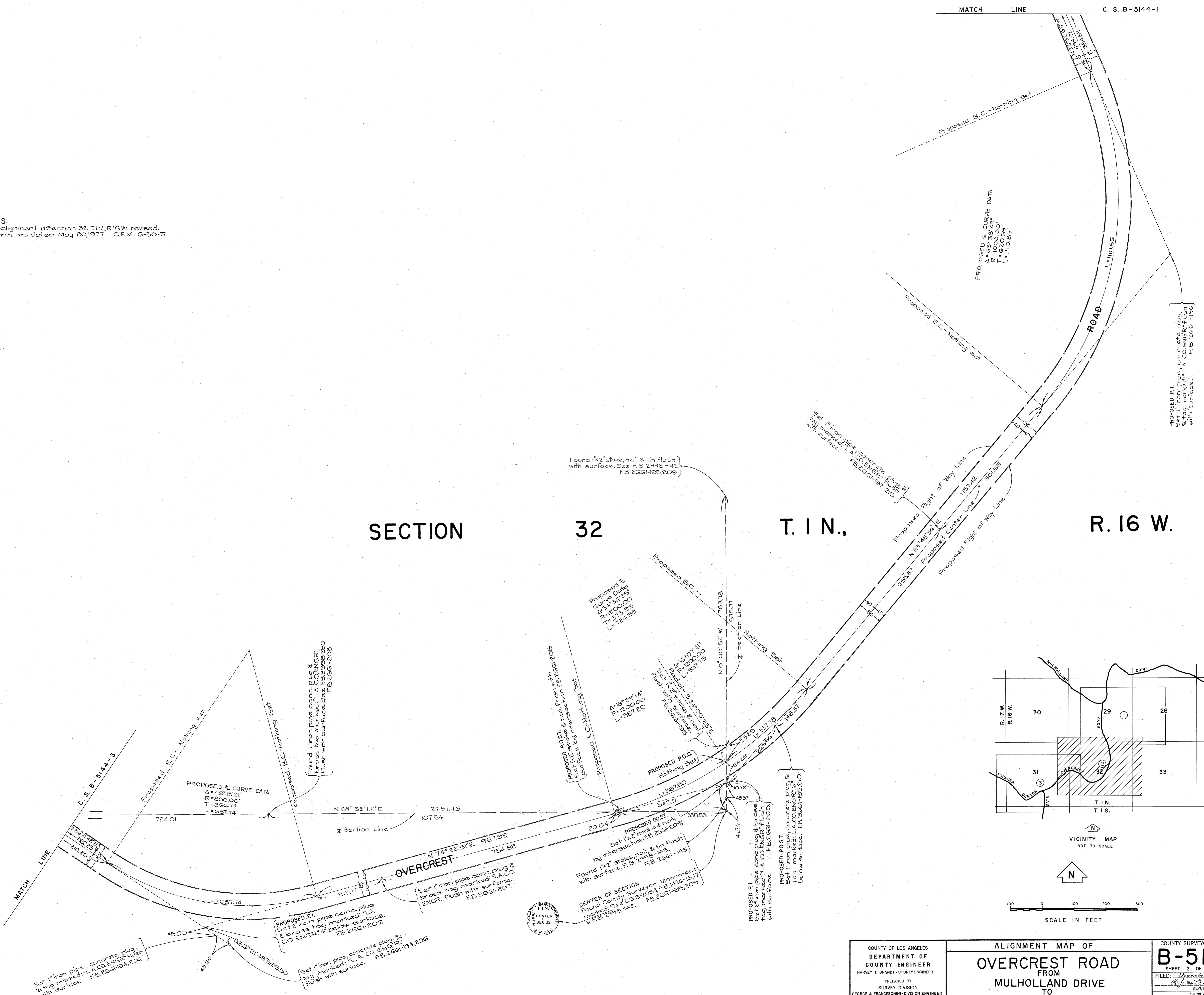
SECTION CORNER
 Found County Surveyor Monument
 marked: flush with surface. See
 F.B. 2998-98. F.B. 2661-198.



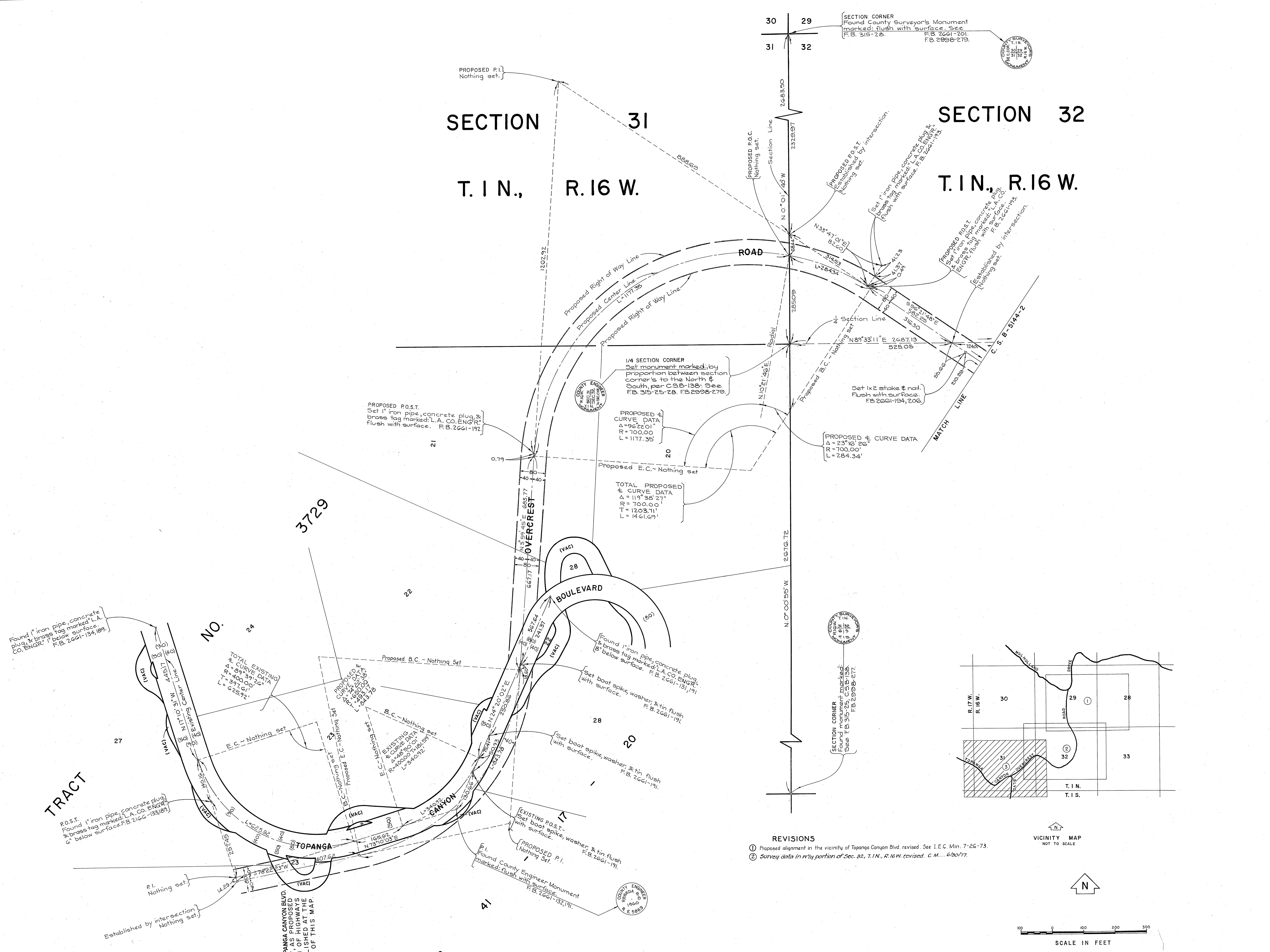
CLOSING CORNER SECTION 29, T.1N., R.16W.
 Found County Surveyor Monument
 marked: flush with surface. See
 F.B. 2998-98. F.B. 2661-198.

COUNTY OF LOS ANGELES DEPARTMENT OF COUNTY ENGINEER HARVEY E. BRANDT - COUNTY ENGINEER PREPARED BY SURVEY DIVISION GEORGE A. FRANCESCHINI - DIVISION ENGINEER SURVEYED BY E. F. ENGLISH CHECKED BY R. MANOR DRAWN BY R. R. SHEAN	ALIGNMENT MAP OF OVERCREST ROAD FROM MULHOLLAND DRIVE TO TOPANGA CANYON BLVD.		COUNTY SURVEYOR'S MAP NO. B-5144 SHEET 1 OF 3 SHEETS FILED: <i>December 7, 1971</i> DEPT. OF PUBLIC WORKS SURVEYED JUNE - DECEMBER 1969 REFERENCE F. B. 2661 & F. B. 2998	REVISION NO. BY DATE ① S.R.B. 3-7-72 ② C.E.M. 4-16-74
	BASIS OF BEARINGS THE BOUNDARY OF THE CITY OF LOS ANGELES (N 65° 25' 10" W) AS SHOWN ON C. S. B - 2827.			JOB NUMBER 0096.92 INDEX MAP NO. 57,58,8144-097

REVISIONS:
① Proposed alignment in Section 32, T.1N., R.16W. revised.
See I.E.C. minutes dated May 20, 1977. C.E.M. G-30-77.



COUNTY OF LOS ANGELES DEPARTMENT OF COUNTY ENGINEER HARVEY T. BRANDT - COUNTY ENGINEER PREPARED BY SURVEY DIVISION GEORGE J. FRANCESCHINI - DIVISION ENGINEER SURVEYED BY E. F. ENGLISH CHECKED BY R. R. MANOR DRAWN BY R. R. SHEAN	ALIGNMENT MAP OF OVERCREST ROAD FROM MULHOLLAND DRIVE TO TOPANGA CANYON BLVD.		COUNTY SURVEYOR'S MAP NO. B-5144	REVISION NO. BY DATE ① C.E.M. G-77
	BASIS OF BEARINGS THE BOUNDARY OF THE CITY OF LOS ANGELES (N 65° 25' 10" W) AS SHOWN ON C. S. B - 2627.		SHEET 2 OF 3 SHEETS FILED: <i>December 2, 1971</i> DEPUTY SURVEYED JUNE - DECEMBER 1969	
			REFERENCE F. B. 2661 & F.B. 2998	
			JOB NUMBER 0096.92	INDEX MAP NO. 57,58, & 144-097



Found 1" iron pipe, concrete plug & brass tag marked L.A. CO. ENGR. 1" below surface. F.B. 2661-134, 189

P.O.S.T. Found 1" iron pipe, concrete plug & brass tag marked L.A. CO. ENGR. 6" below surface. F.B. 2166-133, 189

Found 1" iron pipe, concrete plug & brass tag marked L.A. CO. ENGR. 1" below surface. F.B. 2661-131, 191

Found 1" iron pipe, concrete plug & brass tag marked L.A. CO. ENGR. 1" below surface. F.B. 2661-131, 191

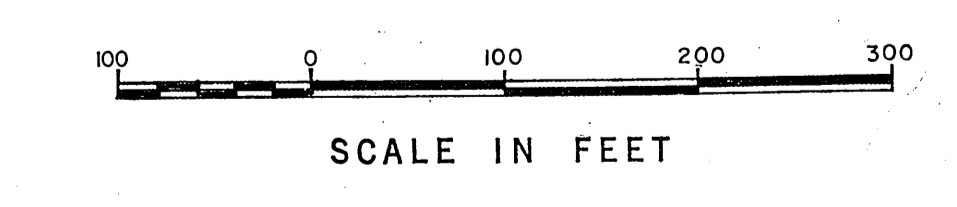
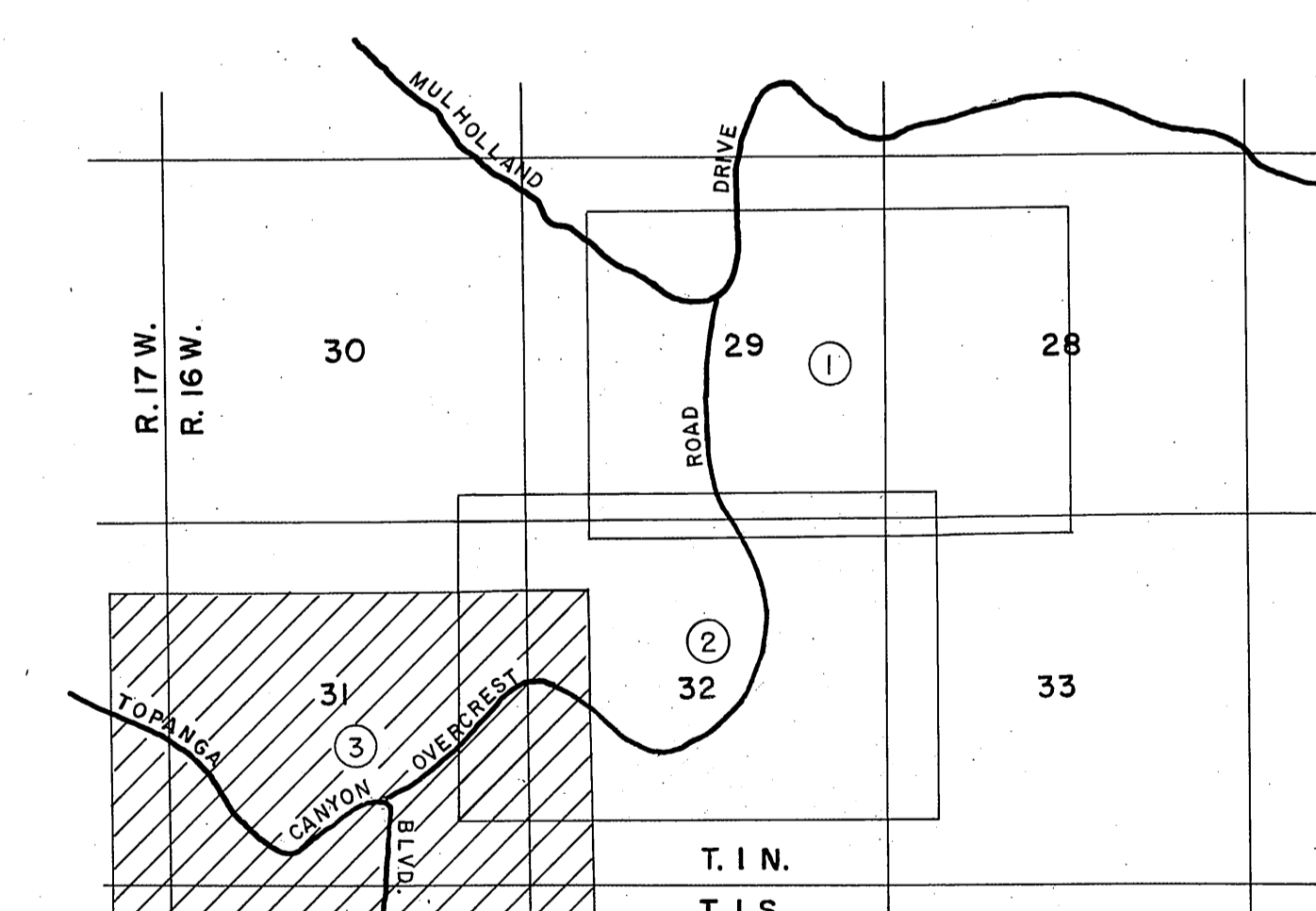
Set boat spike, washer & tin flush with surface. F.B. 2661-191

Set boat spike, washer & tin flush with surface. F.B. 2661-191

Found County Engineer Monument marked flush with surface. F.B. 2661-132, 191

NOTE: THE ALIGNMENT OF TOPANGA CANYON BLVD. A SECONDARY HIGHWAY, AS SHOWN ON THE MASTER PLAN HAS NOT BEEN ESTABLISHED AT THE TIME OF THE FILING OF THIS MAP.

- REVISIONS
- ① Proposed alignment in the vicinity of Topanga Canyon Blvd. revised. See I.E.C. Min. 7-26-73.
 - ② Survey data in N¹⁴ portion of Sec. 22, T.1N., R.16W. revised. C.M. 6/30/77.



COUNTY OF LOS ANGELES DEPARTMENT OF COUNTY ENGINEER HARVEY T. BRANDT - COUNTY ENGINEER PREPARED BY SURVEY DIVISION GEORGE J. FRANCESCHINI - DIVISION ENGINEER SURVEYED BY E.F. ENGLISH CHECKED BY R. MANDOR DRAWN BY R. R. SHEAN	ALIGNMENT MAP OF OVERCREST ROAD FROM MULHOLLAND DRIVE TO TOPANGA CANYON BLVD. BASIS OF BEARINGS THE BOUNDARY OF THE CITY OF LOS ANGELES (N 65° 25' 10" W) AS SHOWN ON C.S.B - 2827.	COUNTY SURVEYOR'S MAP NO. B-5144 SHEET 3 OF 3 SHEETS FILED: December 7, 1977 DEPUTY SURVEYOR JUNE - DECEMBER - 1969 REFERENCE F. B. 2661 & F.B. 2998	REVISION NO. BY DATE ① S.S. 4-74 ② C.M. 6-77
		JOB NUMBER 009632	INDEX MAP NO. 57,58, & 144-097