

Found spike, washer, & tin. See F.B. 3017-80, F.B. 3421-12, 55.
Set spike, washer, & tin flush with surface. F.B. 3421-55.

Set spike, washer, & tin. F.B. 3421-54.

ANGLE POINT IN WHITES CANYON ROAD marked "L.S. 2602' 5" below surface. Set L.A. Co. Engr. well & cover. See Tract No. 25924, M.B. 667-93-17, & Tract No. 25926, M.B. 675-84-54. F.B. 3421-16, 54.

Set spike, washer, & tin. F.B. 3421-54.

Set spike, washer, & tin. F.B. 3421-54.

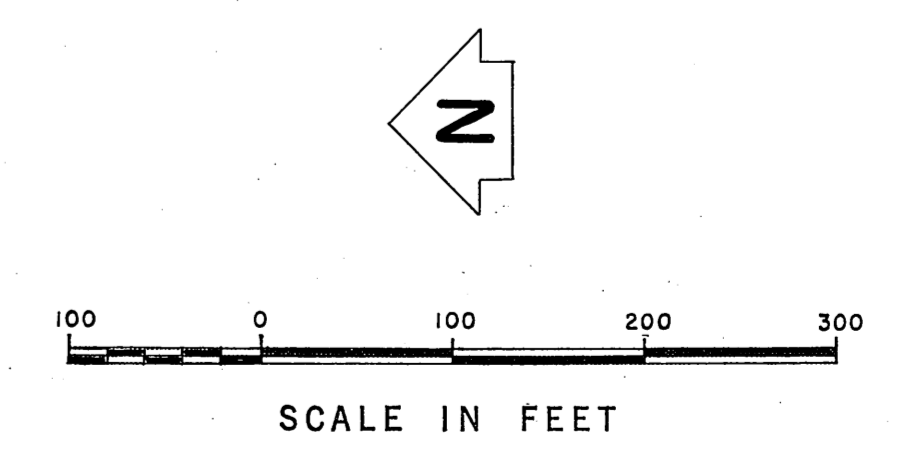
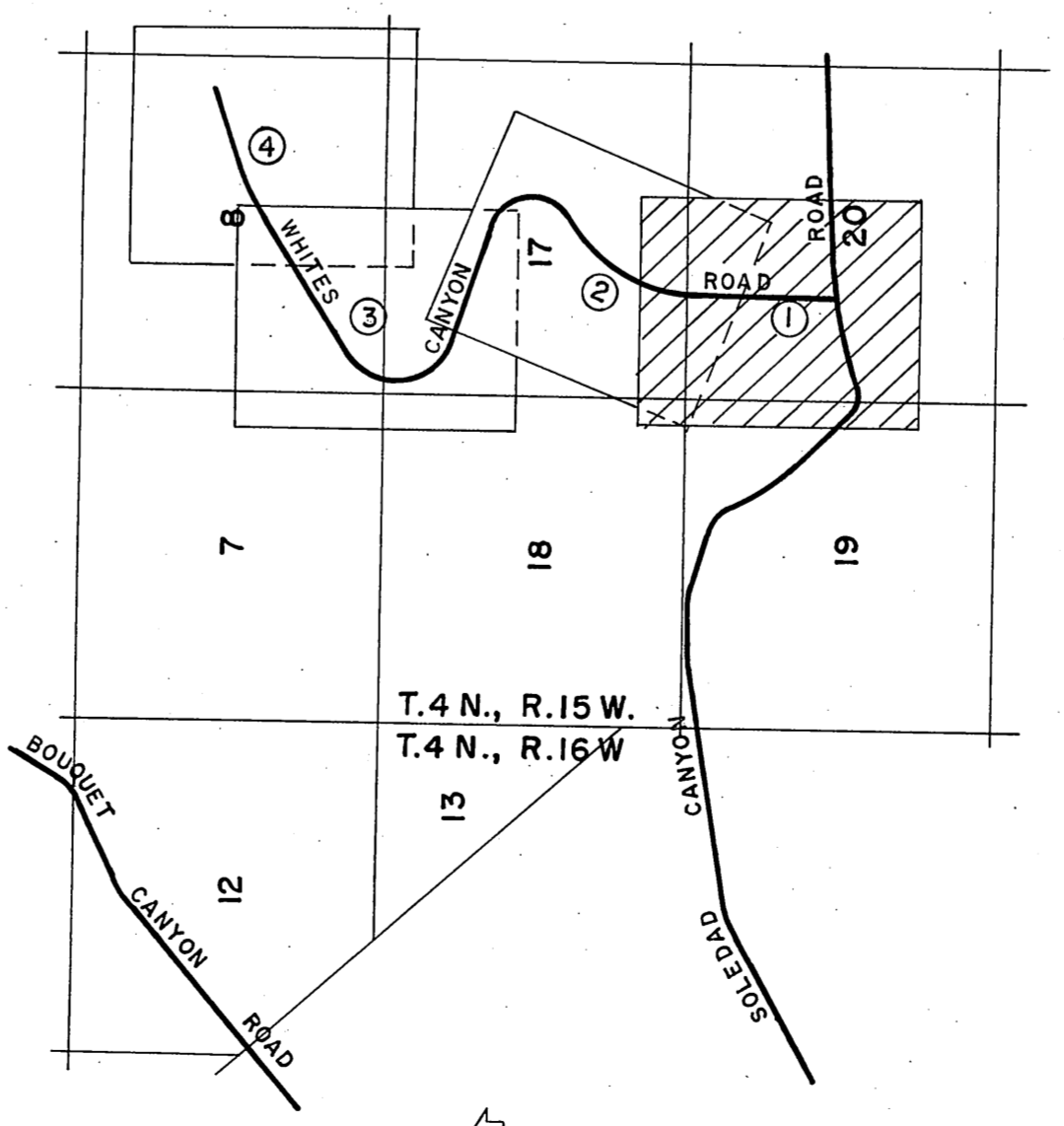
Set spike, washer, & tin flush with surface. F.B. 3421-53.

Found lead & tack 3" below surface. See F.B. 2635-6, 87, Rd. Dept. F.B. 447-64, & F.B. 3018-112. F.B. 3421-9, 53.

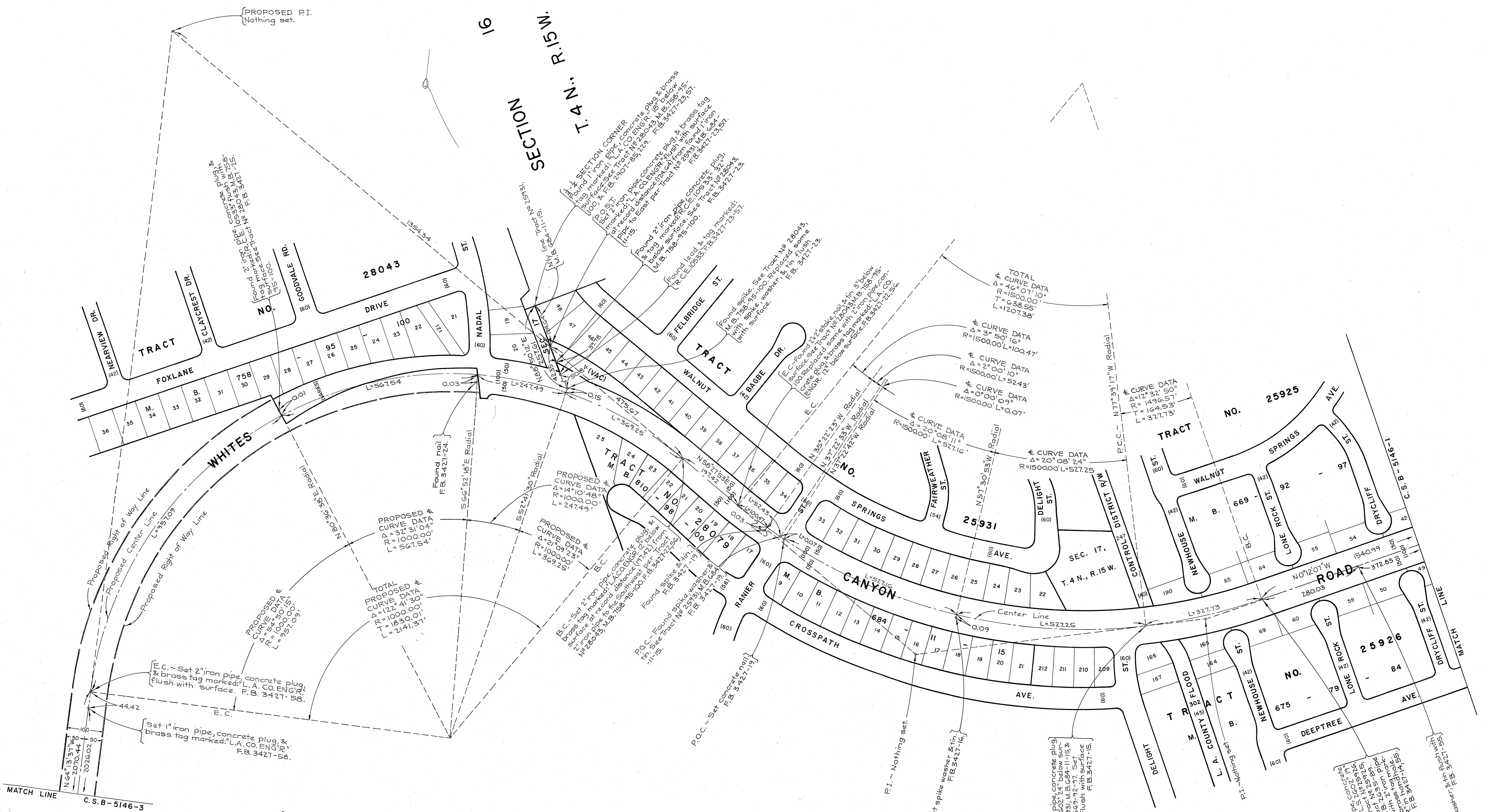
PROPOSED B.C. per C.S.B-2874-1. Found spike, washer, & tin 3" below surface. Replaced same with 2" iron pipe, concrete plug & brass tag marked: "L.A. CO. ENGR" in handhole. See F.B. 2635-6, 87, & Rd. Dept. F.B. 447-64. F.B. 3421-9, 53.

Found lead & tack in top of concrete channel wall. See Rd. Dept. F.B. 447-64, 137. F.B. 3421-9, 53.

Found spike & washer. See Rd. Dept. F.B. 447-64, 137. F.B. 3421-9.

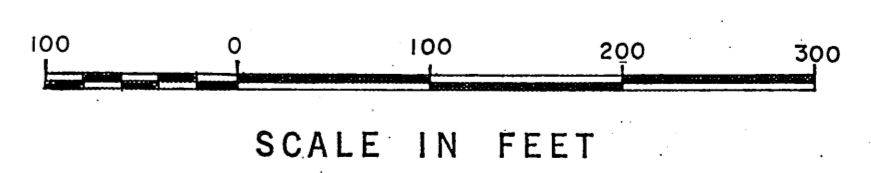
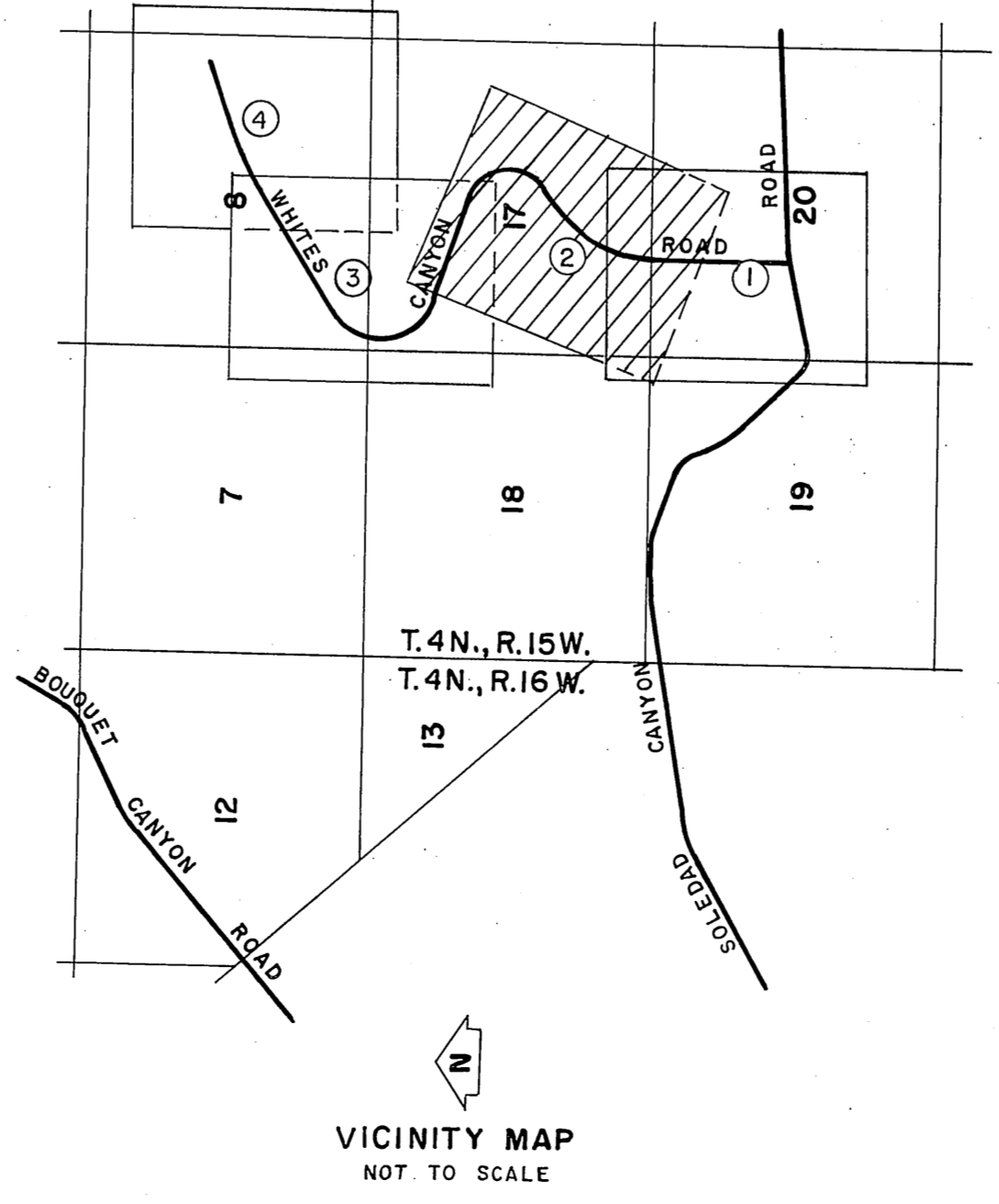


COUNTY OF LOS ANGELES DEPARTMENT OF COUNTY ENGINEER HARVEY L. BRANDT - COUNTY ENGINEER PREPARED BY SURVEY DIVISION GEORGE J. FRANCESCHINI - DIVISION ENGINEER SURVEYED BY B. JACKSON CHECKED BY J. M. CAVATAIO DRAWN BY R. R. SHEAN	ALIGNMENT MAP OF WHITES CANYON ROAD FROM SOLEDAD CANYON ROAD TO PLUM CANYON ROAD		COUNTY SURVEYOR'S MAP NO. B-5146 SHEET 1 OF 4 SHEETS FILED: <i>Shelby 20</i> , 1977 <i>R. J. Mitchell</i> DEPUTY SURVEYED JULY 1967 - JANUARY 1970 REFERENCE F. B. 3427-5-61		REVISION NO. BY DATE
	BASIS OF BEARINGS THE BEARING OF PLUM CANYON ROAD (S 48° 46' 43" E) AS SHOWN ON C.S.B-3004.		JOB NUMBER 0095.39	INDEX MAP NO. 264-137	



SECTION 17
T.4N., R.15W.
SECTION 19
T.4N., R.15W.

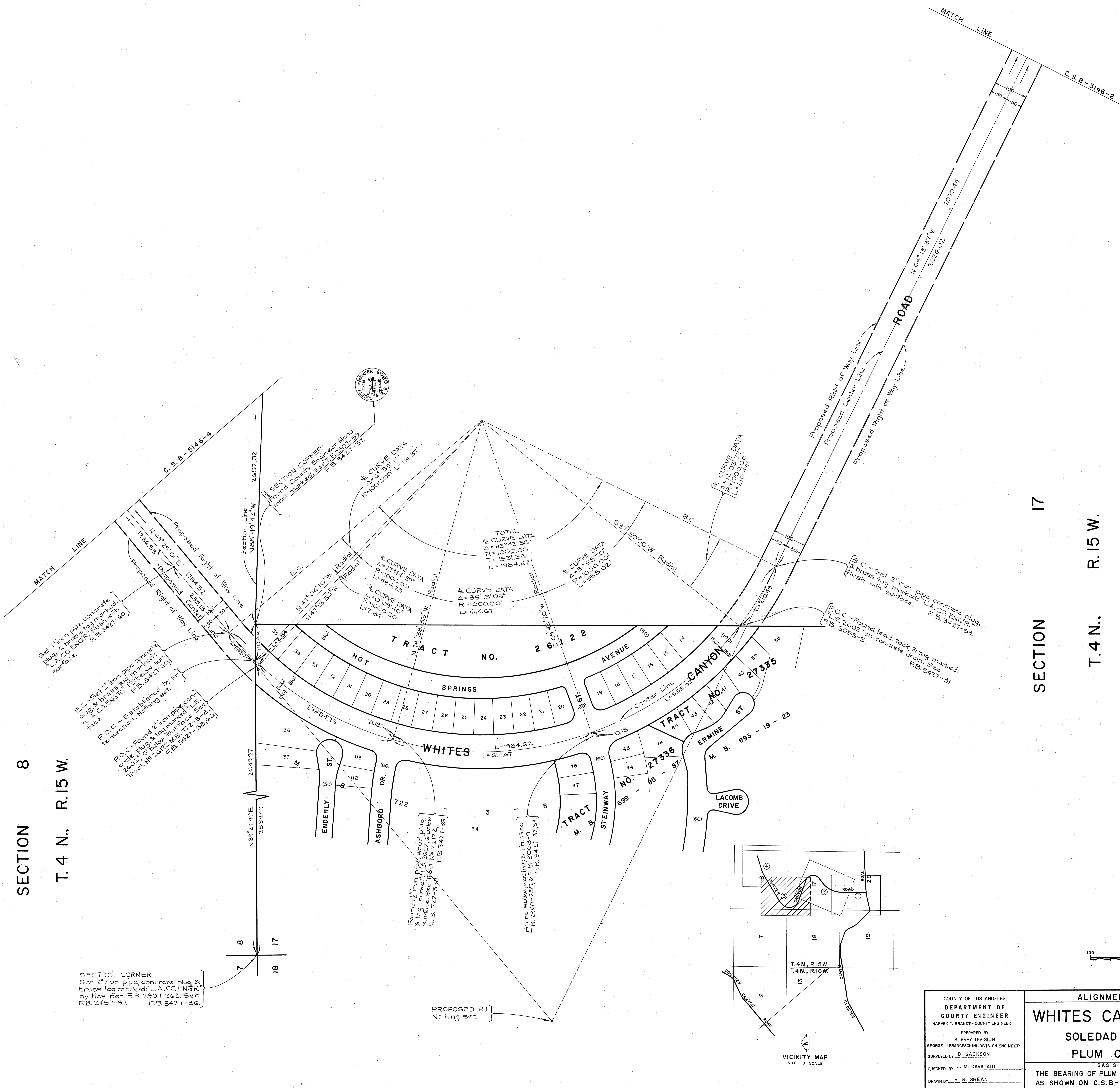
REVISIONS:
① Tr. No 28079, M.B. 810-98-100 added, and right of way of Nadal St. corrected.



COUNTY OF LOS ANGELES DEPARTMENT OF COUNTY ENGINEER HARVEY T. BRANDT - COUNTY ENGINEER PREPARED BY SURVEY DIVISION GEORGE J. FRANCESCINI - DIVISION ENGINEER SURVEYED BY B. JACKSON CHECKED BY J. M. CAVATAIO DRAWN BY R. R. SHEAN	ALIGNMENT MAP OF WHITES CANYON ROAD FROM SOLEDAD CANYON ROAD TO PLUM CANYON ROAD		COUNTY SURVEYOR'S MAP NO. B-5146 SHEET 2 OF 4 SHEETS FILED: <i>September 28, 1970</i> DEPUTY <i>R. J. ...</i> SURVEYED JULY 1967 - JANUARY 1970 REFERENCE F. B. 3427-5-61 JOB NUMBER 0095.39 INDEX MAP NO. 264-137	REVISION NO. BY DATE ① B.H.T. 7-72
	BASIS OF BEARINGS THE BEARING OF PLUM CANYON ROAD (S48°46'43"E) AS SHOWN ON C.S.B-3004.			

SECTION 8

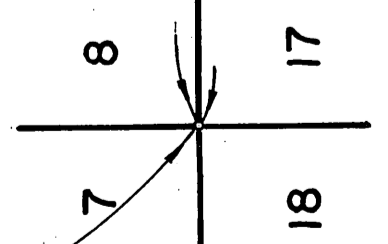
T.4 N., R.15 W.



SECTION 17

T.4 N., R.15 W.

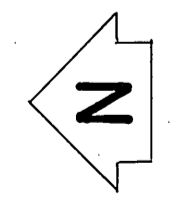
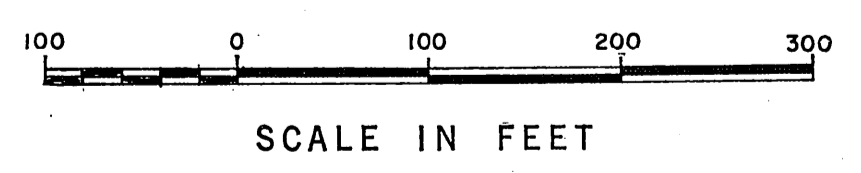
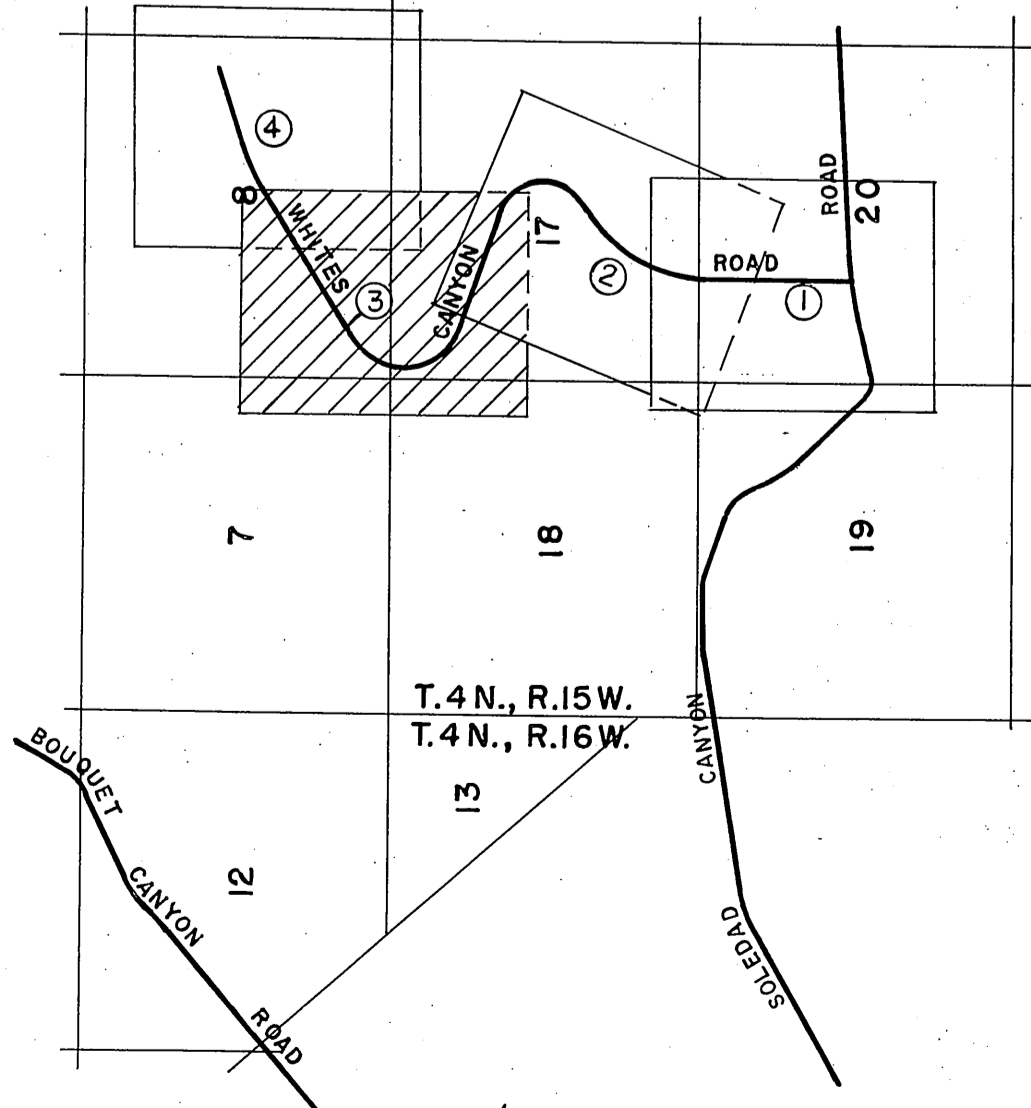
SECTION CORNER
Set 2" iron pipe, concrete plug & brass tag marked: L.A. CO. ENGR. by files per F.B. 2907-267. See F.B. 2457-97. F.B. 3427-36.



PROPOSED P.I.
Nothing set.

Found 1 1/2" iron pipe, wood peg & tag marked: L.S. 2602, 6" below surface. See Tract No. 26122. M.B. 722-37. F.B. 3427-35.

Found spikes, washer & tin. See F.B. 2907-253. F.B. 3068-9. F.B. 3427-37, 34.



COUNTY OF LOS ANGELES
DEPARTMENT OF
COUNTY ENGINEER
HARVEY T. BRANDY - COUNTY ENGINEER
PREPARED BY
SURVEY DIVISION
GEORGE J. FRANCESHINI - DIVISION ENGINEER
SURVEYED BY - B. JACKSON
CHECKED BY - J. M. CAVATAIO
DRAWN BY - R. R. SHEAN

ALIGNMENT MAP OF
WHITES CANYON ROAD
FROM
SOLEDAD CANYON ROAD
TO
PLUM CANYON ROAD
BASIS OF BEARINGS
THE BEARING OF PLUM CANYON ROAD (S48°46'43"E)
AS SHOWN ON C.S.B-3004.

COUNTY SURVEYOR'S MAP NO. B-5146		REVISION	
SHEET 3 OF 4 SHEETS		NO.	DATE
FILED: <i>September 28, 1971</i>			
DEPUTY <i>R. J. White</i>			
SURVEYED JULY 1967 - JANUARY 1970			
REFERENCE F. B. 3427-5-61			
JOB NUMBER 009539	INDEX MAP NO. 264-137		

