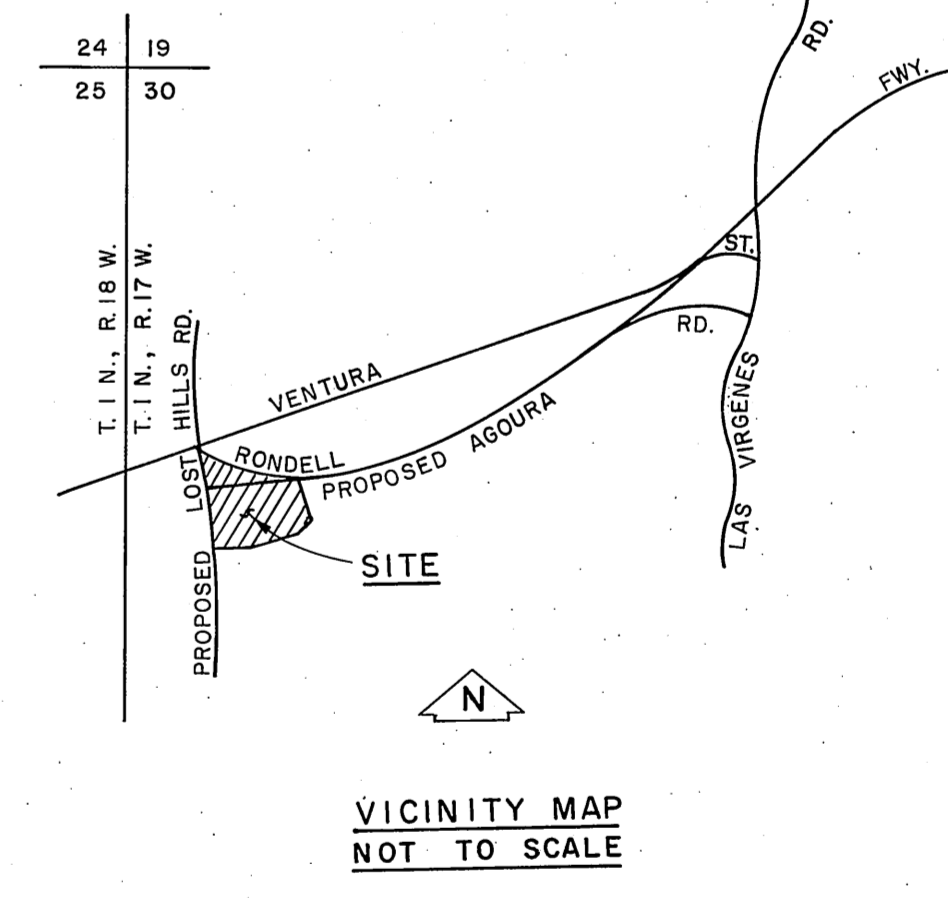
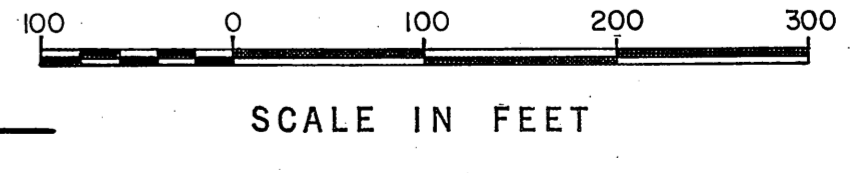


LAS VIRGENES COUNTY ADMINISTRATIVE CENTER

- REVISIONS**
- Survey data for Center of Section 30, T.1N., R.17W. corrected.
 - Survey data for Center of Section 30, T.1N., R.17W. corrected.

COUNTY OF LOS ANGELES DEPARTMENT OF COUNTY ENGINEER HARVEY T. BRANDT - COUNTY ENGINEER PREPARED BY SURVEY DIVISION GEORGE J. FRANCESCHINI - DIVISION ENGINEER SURVEYED BY F. F. MANNEY, JR. E. L. STRADER, JR. CHECKED BY H. HOLMAN DRAWN BY M. HAMASU, S. KURACHI	BOUNDARY MAP OF LAS VIRGENES COUNTY ADMINISTRATIVE CENTER (AGOURA)		COUNTY SURVEYOR'S MAP NO. B-5150 SHEET 1 OF 1 SHEET FILED: 1970 JAN 19 1971 COUNTY ENGINEER DEPUTY COUNTY ENGINEER SURVEYED JULY, 1970 JAN., 1971 REFERENCE F.B. 3851 F.B. 2972 JOB NUMBER 0077.36	REVISION NO. BY DATE 1. BY 1971 2. BY 1971 3. BY 1971
	BASIS OF BEARINGS THE PROPOSED CENTER LINE OF AGOURA ROAD, (N. 68° 01' 36" E.) AS SHOWN ON C. S. B - 5133.			INDEX MAP NO. 158 - 057



SECTION CORNER
Found County Engineer
monument marked: 3"
above surface. See F.B.
2326-16, 23, F.B. 2972-234

1/4, 1/4 SECTION CORNER
Set 2" iron pipe, conc. plug
and brass tag marked, "L.A.
CO. ENGR." flush with surface
by proportion between
Section Corner to the West
and 1/4 Section Corner to
the East per C.S.B. 9082,
F.B. 2972-237.

1/4 SECTION CORNER
Found County Engineer
monument marked: See
F.B. 2326-34,
F.B. 2972-233, 268

WITNESS CORNER
Set County Engineer
monument marked: 6"
below surface.
F.B. 2972-250

Found 2" iron pipe, conc.
plug and brass tag marked,
"L.A. CO. ENGR." flush with
surface. See F.B. 3150-236,
F.B. 2972-217, 249.

Found 1" iron pipe, conc. plug
and brass tag marked, "L.A.
CO. ENGR." flush with sur-
face 0.02' east of line. See
F.B. 3851-27, Reset same on
line. F.B. 2972-249

1/4, 1/4 SECTION CORNER
Found 1" iron pipe, conc. plug
and brass tag marked, "L.A.
CO. ENGR." flush with sur-
face 0.03' east of line. See
F.B. 3851-26, Reset same on
line. F.B. 2972-248

WITNESS CORNER
Found 1" x 2" stake and nail,
See F.B. 2972-215, Removed
same and set County Engineer
monument marked: flush with
surface. F.B. 2972-246

SECTION CORNER
Found County Engineer
monument marked: See F.B. 2972-
215, F.B. 3851-20. Monument
disturbed, Reset same by
intersection. F.B. 2972-245

WITNESS CORNER
Found 1" iron pipe, conc. plug
and brass tag marked, "L.A.
CO. ENGR." flush with surface.
See F.B. 2972-242,
Removed same and set
County Engineer monument
marked: 10" below surface.
F.B. 2972-251

Found 2" iron pipe, wood plug
and tag marked, "L.S. 2116",
flush with surface. See F.B.
71-22, F.B. 2972-225
Removed 5/4/72.

CENTER OF SECTION T.1N., R.17W.
Found 1 1/2" iron pipe, nail & tag
marked "L.S. 2304" 8" below
surface. This point was found
directly below the 1" iron pipe,
conc. plug & brass tag marked
"L.A. CO. ENGR." per F.B. 2972-225.
Removed said monuments &
replaced with County Engineer
Monument marked: 4" below
surface. F.B. 2972-268.

SECTION CORNER
Found County Engineer
monument marked: 2"
above surface. See F.B.
2336-24, F.B. 2972-229, 261, 268

SECTION CORNER
Found County Engineer
monument marked: 4"
below surface. See F.B.
2972-250

PROPERTY CORNER
Set 1" iron pipe, conc. plug
and brass tag marked, "L.A.
CO. ENGR." flush with sur-
face. See F.B. 2972-226, F.B. 3851-14

Found 1" iron pipe, conc. plug
and brass tag marked, "L.A.
CO. ENGR." flush with sur-
face. See F.B. 2972-226, F.B. 3851-14

Set 1" iron pipe, conc. plug
and brass tag marked, "L.A.
CO. ENGR." flush with sur-
face. See F.B. 2972-225, 253

Set 2" iron pipe, conc. plug
and brass tag marked,
"L.A. CO. ENGR." flush with
surface by intersection.
F.B. 3851-15

1/4, 1/4, 1/4 SECTION CORNER
Set 2" iron pipe, conc. plug
and brass tag marked,
"L.A. CO. ENGR." flush with
surface by proportion.
F.B. 3851-25.

1/4 SECTION CORNER
Established by proportion
between Section Corner
to the West and 1/4 Section
Corner to the East per
Gov't plat. F.B. 3851-21

Set 2" iron pipe, conc. plug
and brass tag marked,
"L.A. CO. ENGR."
F.B. 2972-225, 253

1/4 SECTION CORNER
Found County Engineer
monument marked: flush
with surface. See F.B.
2336-22, F.B. 2972-225, 252,
268.