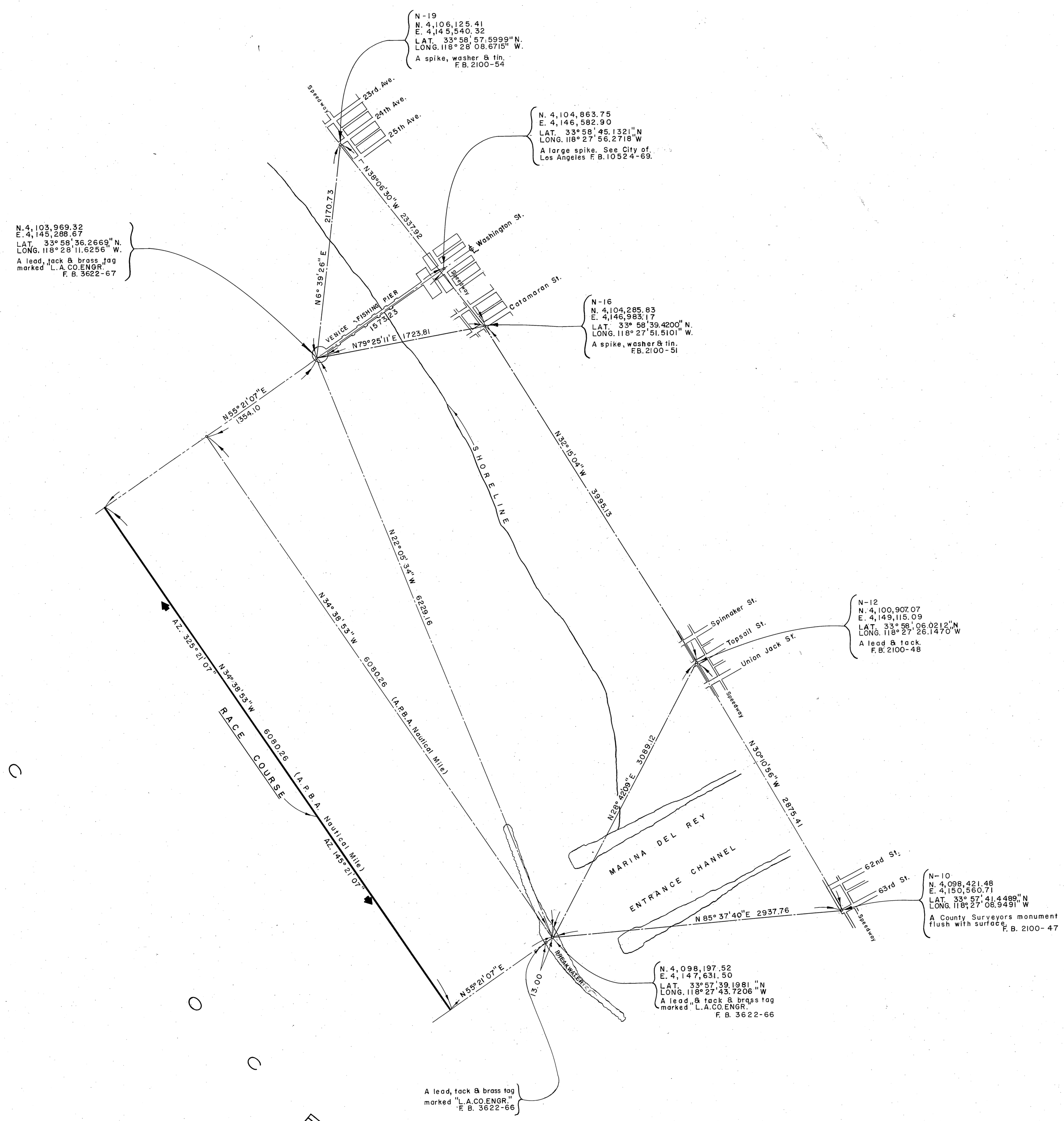


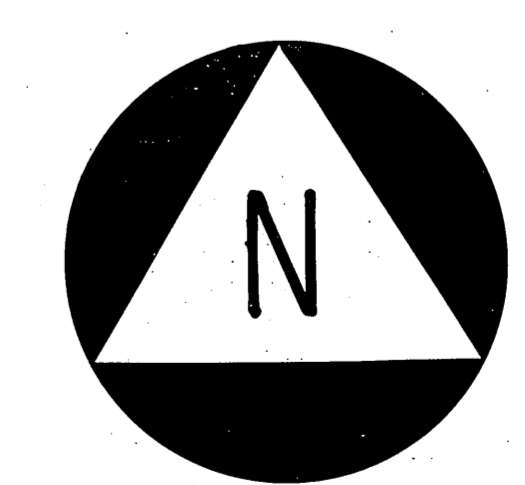
C 2 B - 2 1 2 1

P
A
C
I
F
I
C
O
C
E
A
N



I, GEORGE J. FRANCESCHINI, a registered Civil Engineer in the State of California, hereby certify that I have examined this map and find that the coordinates, bearings, and distances delineated hereon between surveyed points and existing range markers to be correct.

George J. Franceschini
Reg. No. 10939



500 0 500 1000 1500
SCALE IN FEET

REVISION:
① The bearing of the tie line from Pier to N-16 corrected.

COUNTY OF LOS ANGELES DEPARTMENT OF COUNTY ENGINEER HARVEY T. BRANDT - COUNTY ENGINEER PREPARED BY SURVEY DIVISION GEORGE J. FRANCESCHINI - DIVISION ENGINEER SURVEYED BY <u>ROBERT WILSON</u> CHECKED BY <u>ROBERT MICHK</u> DRAWN BY <u>GEORGE BOYER</u>	MAP OF MARINA DEL REY OFFICIAL OFFSHORE RACE COURSE (A.P.B.A. NAUTICAL MILE)		COUNTY SURVEYOR'S MAP NO. B-5151	REVISION NO. BY DATE ① M.H. 9-19-72
	SHEET OF 1 SHEETS FILED: <u>Robert Wilson</u> 19 <u>August 30, 1971</u> DEPUTY		SURVEYED AUGUST 1971	
	BASIS OF BEARINGS CALIFORNIA COORDINATE SYSTEM, ZONE 7 MAGNETIC DECLINATION IS 15'00" EAST (1971) MOVING WEST AT 01" PER YEAR		REFERENCE F.B. 2100 F.B. 3622 L.A. City Engr. F.B. 10524	
			JOB NUMBER 0021.16	INDEX MAP NO. 23

C 2 B - 2 1 2 1