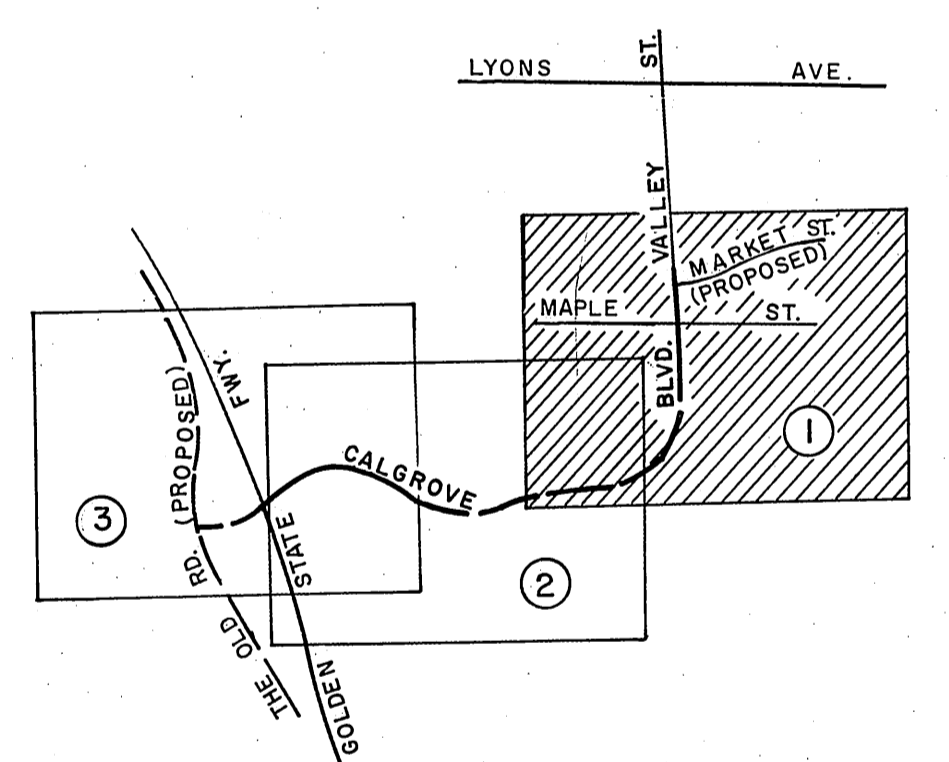
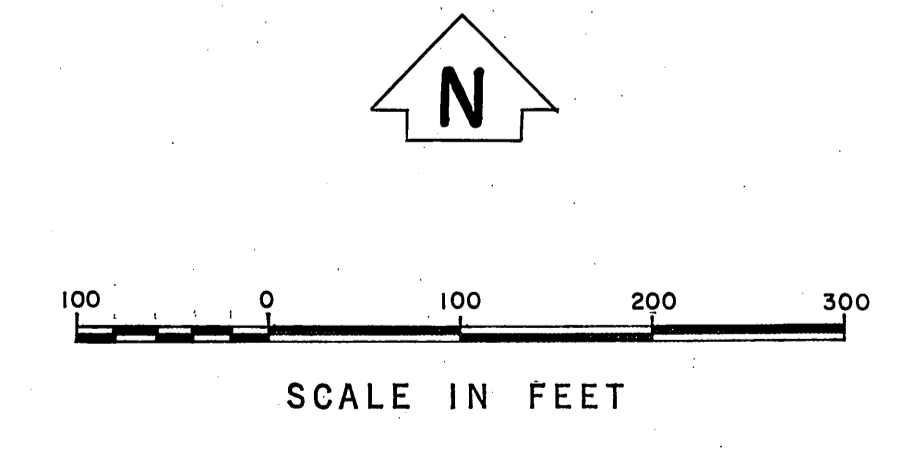


Found County Engineer Monument marked: in handhole. F.B. 2220-198

Found County Surveyor Monument marked: 12" below surface. See F.B. 2678-11 & C.S.B.-2523. F.B. 2220-198



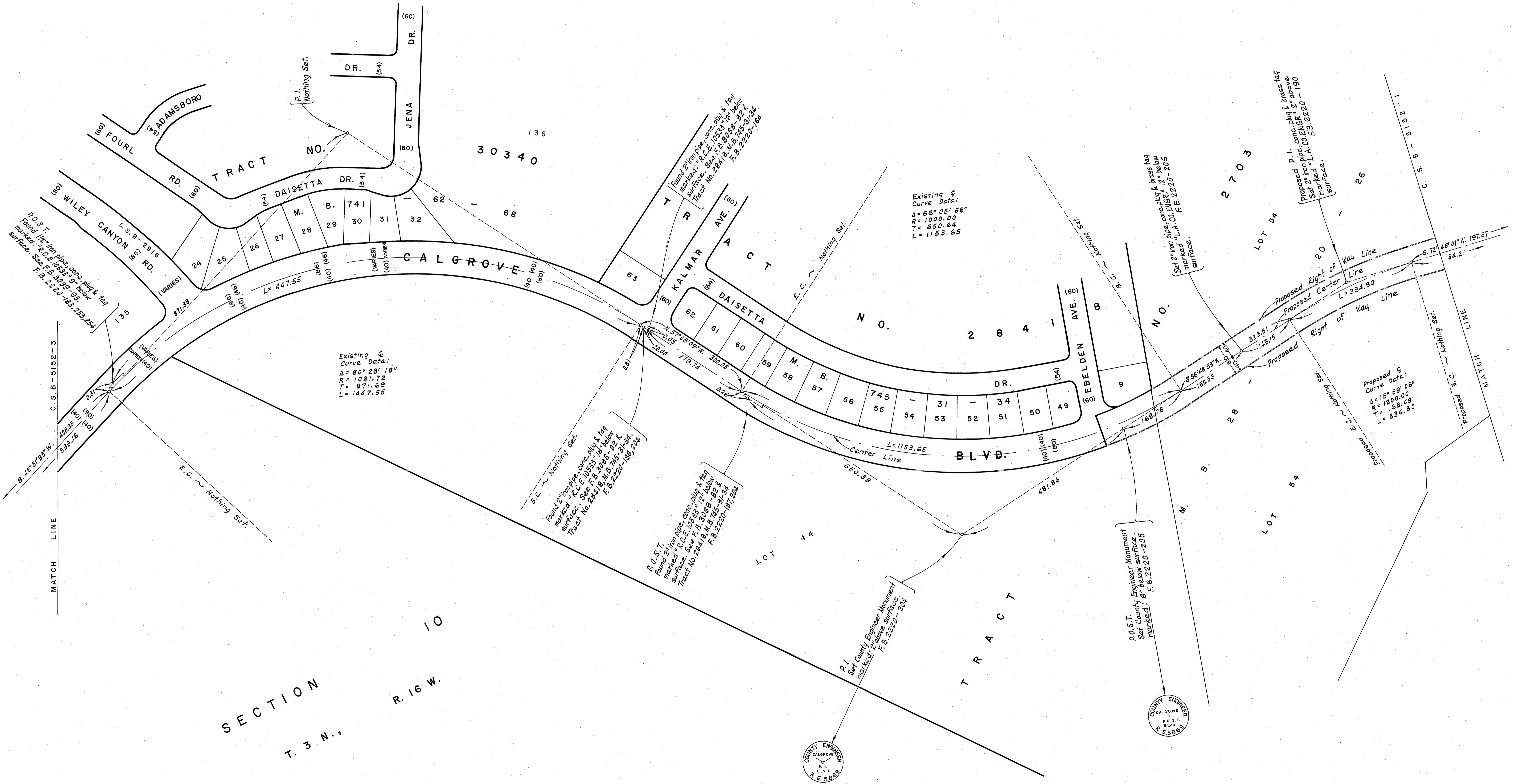
VICINITY MAP
NOT TO SCALE



COUNTY OF LOS ANGELES
DEPARTMENT OF
COUNTY ENGINEER
HARVEY T. BRANDT - COUNTY ENGINEER
PREPARED BY
SURVEY DIVISION
GEORGE J. FRANCESCHINI - DIVISION ENGINEER
SURVEYED BY - C. L. WRIGHT
CHECKED BY - R. G. HILARIO
DRAWN BY - T. ABE B. H. TABATA

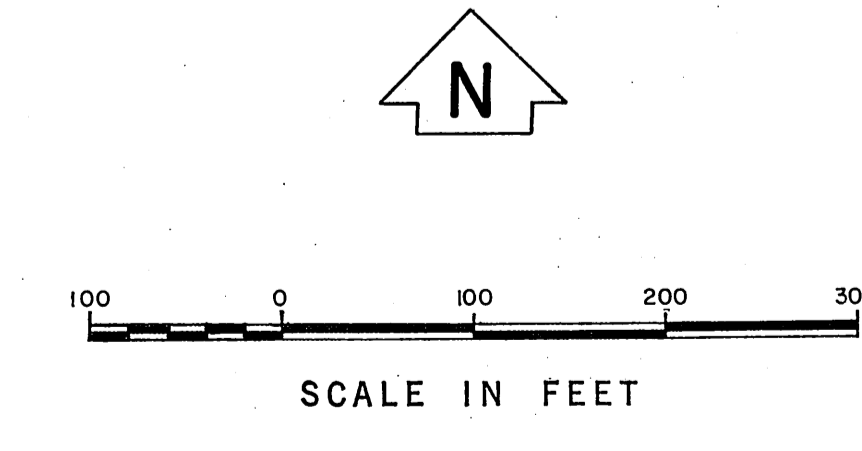
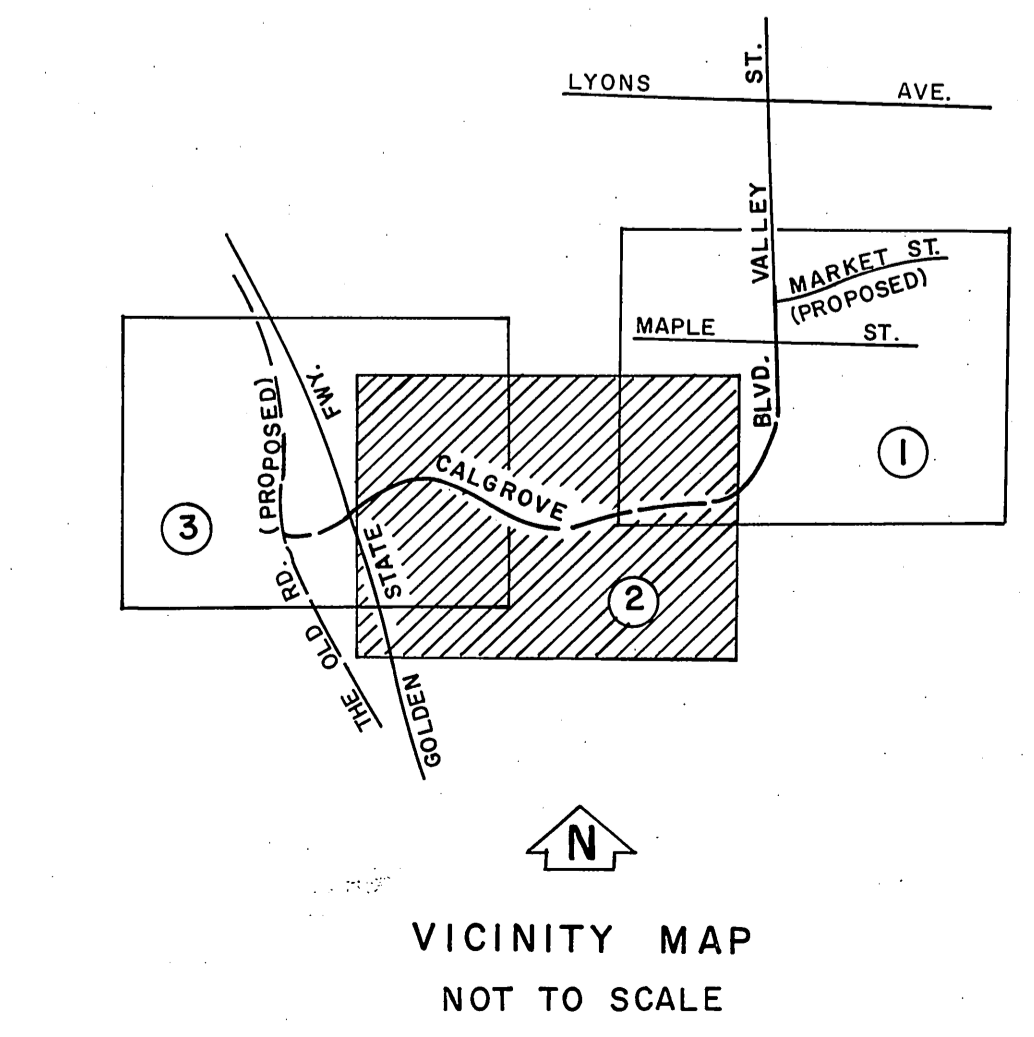
ALIGNMENT MAP OF
CALGROVE BLVD.
FROM
MARKET STREET
TO
THE OLD ROAD
BASIS OF BEARINGS
CALIFORNIA COORDINATE SYSTEM, ZONE 7

COUNTY SURVEYOR'S MAP NO. B-5152		NO.	REVISION
SHEET 1 OF 3 SHEETS		BY	DATE
FILED: <i>December 7, 1971</i>			
DEPUTY			
SURVEYED			
JULY 1969 - JUNE 1970			
REFERENCE			
F. B. 2220-183-255			
F. B. 2678-11-13			
JOB NUMBER	INDEX MAP NO.		
0097.55	234-117		



SECTION
T. 3 N., R. 16 W.

REVISIONS:
① Street widths added adjacent to Tract No. 30340, M.B. 791-22-28



COUNTY OF LOS ANGELES DEPARTMENT OF COUNTY ENGINEER HARVEY T. BRANDT - COUNTY ENGINEER PREPARED BY SURVEY DIVISION GEORGE J. FRANCESCHINI - DIVISION ENGINEER SURVEYED BY - C. L. WRIGHT CHECKED BY - R. G. HILARIO DRAWN BY - T. ABE - B. H. TABATA	ALIGNMENT MAP OF CALGROVE BLVD. FROM MARKET STREET TO THE OLD ROAD BASIS OF BEARINGS CALIFORNIA COORDINATE SYSTEM, ZONE 7		COUNTY SURVEYOR'S MAP NO. B-5152 SHEET 2 OF 3 SHEETS FILED: <i>December 7, 1971</i> <i>Raymond G. Hill</i> DEPUTY SURVEYED JULY 1969 - JUNE 1970 REFERENCE F. B. 2220-183-255 F. B. 2678-11-13 JOB NUMBER 0097.55	REVISION NO. BY DATE ① B.H.T. 1-20-72
			INDEX MAP NO. 234 - 117	

SURVEY CONTROL STATION
NEWHALL E-3
N. 4.251, 744.46
E. 4.118, 682.24
1970 Adjustment
L.A. County Survey Control System
Monument. See F.B. 947-240.

SURVEY CONTROL STATION
NEWHALL H-3
N. 4.249, 831.42
E. 4.125, 755.46
1970 Adjustment
L.A. County Survey Control System
Monument. See F.B. 947-240.

1" iron pipe, conc. plug & brass tag
marked "L.A. CO. ENGR."
See F.B. 947-240

S.F. No. 4
Found 2" iron pipe, conc. plug & brass tag
marked "L.A. CO. ENGR." 24" below
surface. See F.B. 947-240 &
F.B. 3205-33. F.B. 2220-176, 201

Found 2" iron pipe, conc. plug & nail
with tag marked "R.C.E. 10533"
12" below surface. See Tract
No. 30340, M.B. 741-62-68.
F.B. 2220-183

Found 2" iron pipe, conc. plug & tag
marked "R.C.E. 10533" 12" below
surface. See Tract No. 30340,
M.B. 741-68.
F.B. 2220-183

Found 1" iron pipe, conc. plug & brass
tag marked "L.A. CO. ENGR." See
C.S.B-5037-2. F.B. 2220-156, 255

Found 1" iron pipe, conc. plug & brass
tag marked "L.A. CO. ENGR." flush
with surface. See C.S.B-5037-2.
F.B. 2220-155, 255

P. 1. No. 1 per C.S.B-5037-1
Found lead & tack with brass tag
marked "L.A. CO. ENGR." 4" below
surface. See C.S.B-5037-1.
F.B. 2220-148, 255

SECTION

DETAIL MAP
NOT TO SCALE

VICINITY MAP
NOT TO SCALE

SCALE IN FEET

COUNTY OF LOS ANGELES DEPARTMENT OF COUNTY ENGINEER HARVEY T. BRANDT - COUNTY ENGINEER PREPARED BY SURVEY DIVISION GEORGE J. FRANCESCHINI - DIVISION ENGINEER SURVEYED BY <u>C. L. WRIGHT</u> CHECKED BY <u>R. G. HILARIO</u> DRAWN BY <u>T. ABE, B. H. TABATA</u>	ALIGNMENT MAP OF CALGROVE BLVD. FROM MARKET STREET TO THE OLD ROAD BASIS OF BEARINGS CALIFORNIA COORDINATE SYSTEM, ZONE 7		COUNTY SURVEYOR'S MAP NO. B-5152 SHEET 3 OF 3 SHEETS FILED: <u>December 7, 1971</u> REPLY SURVEYED JULY 1969 - JUNE 1970 REFERENCE F. B. 2220-183-255 F. B. 2678-11-13 JOB NUMBER 0097.55	REVISION NO. BY DATE
			INDEX MAP NO. 234-117	