

AZUSA RANCHO
FINALLY CONFIRMED TO ANDREAS DUARTE
P. 2 - 560 - 561

MATCH LINE - C.S.B-5158-2

SUBDIVISION NO. 2
AZUSA LAND & WATER CO.

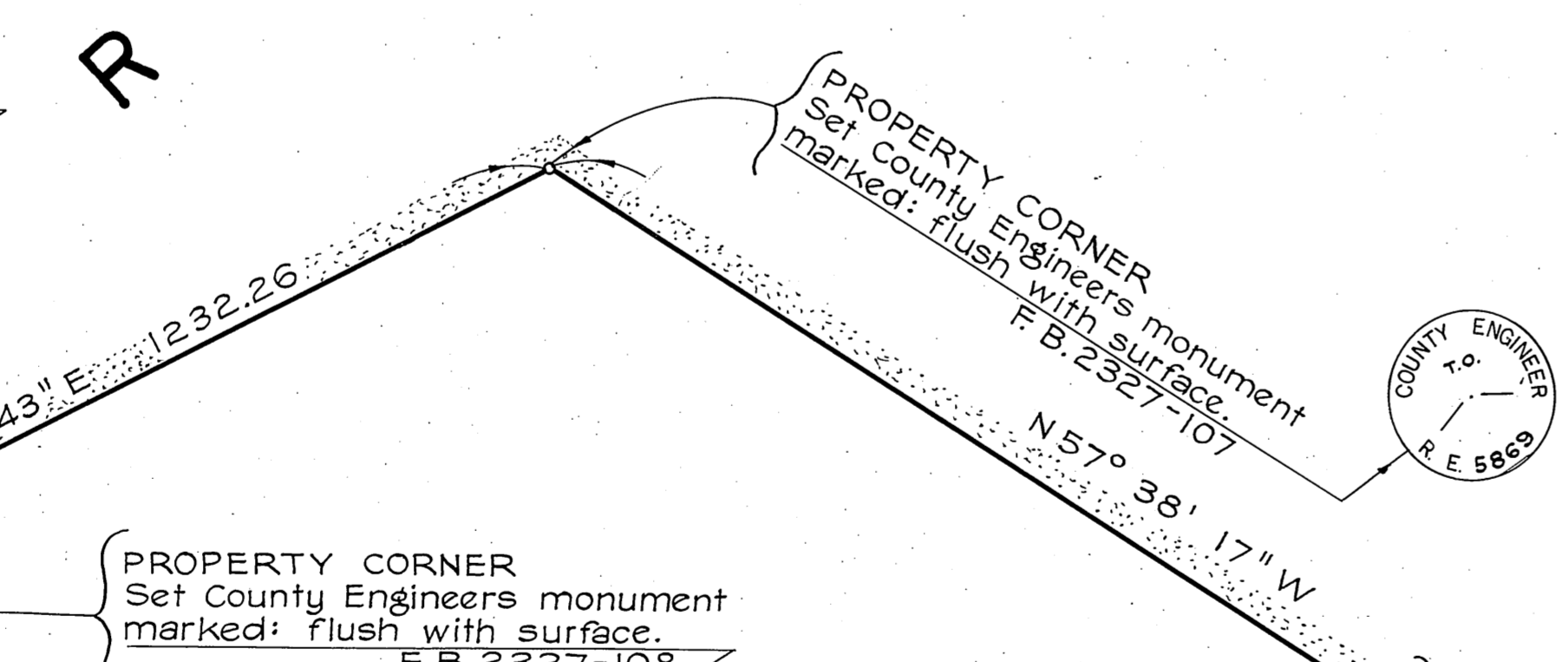
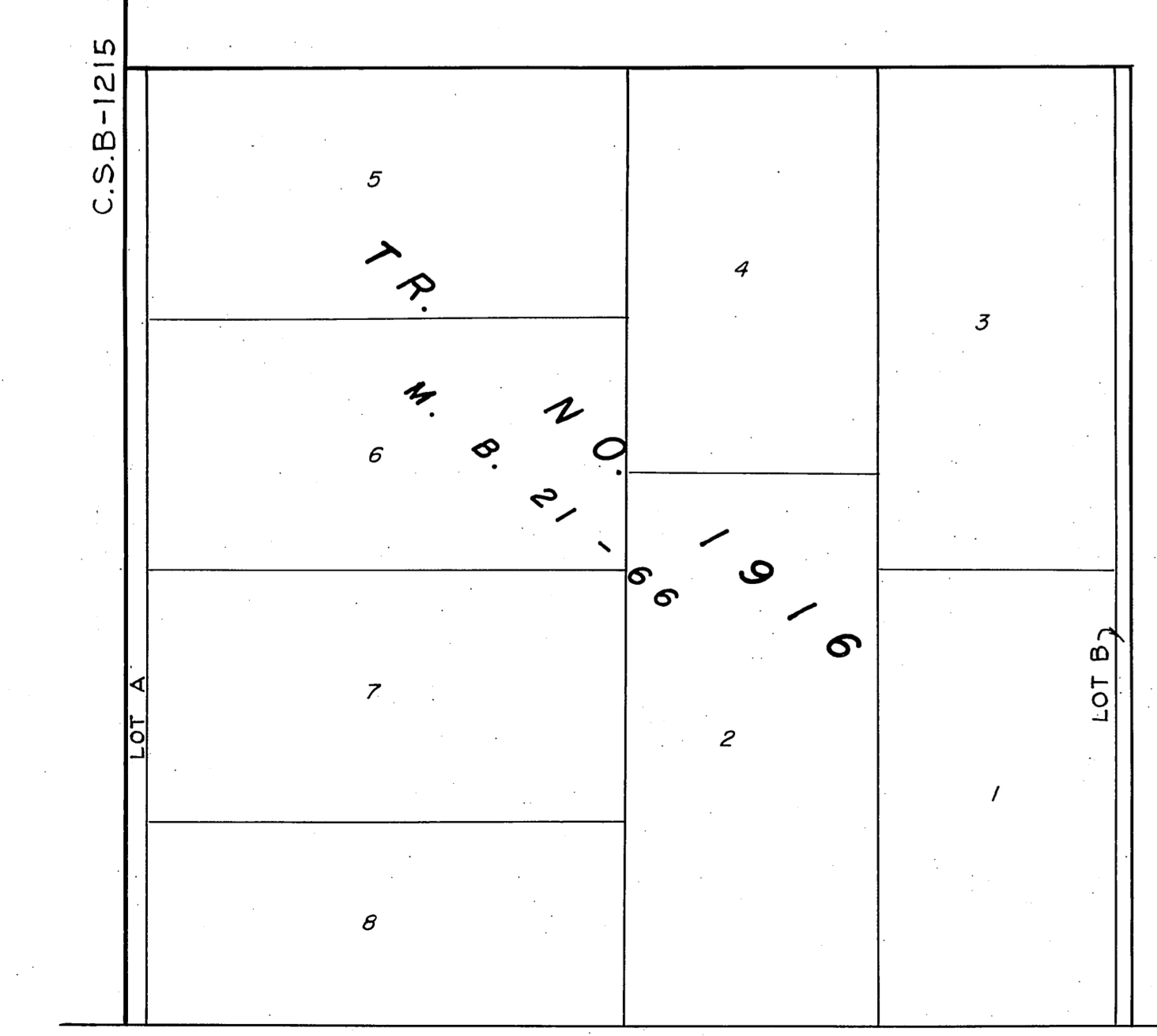
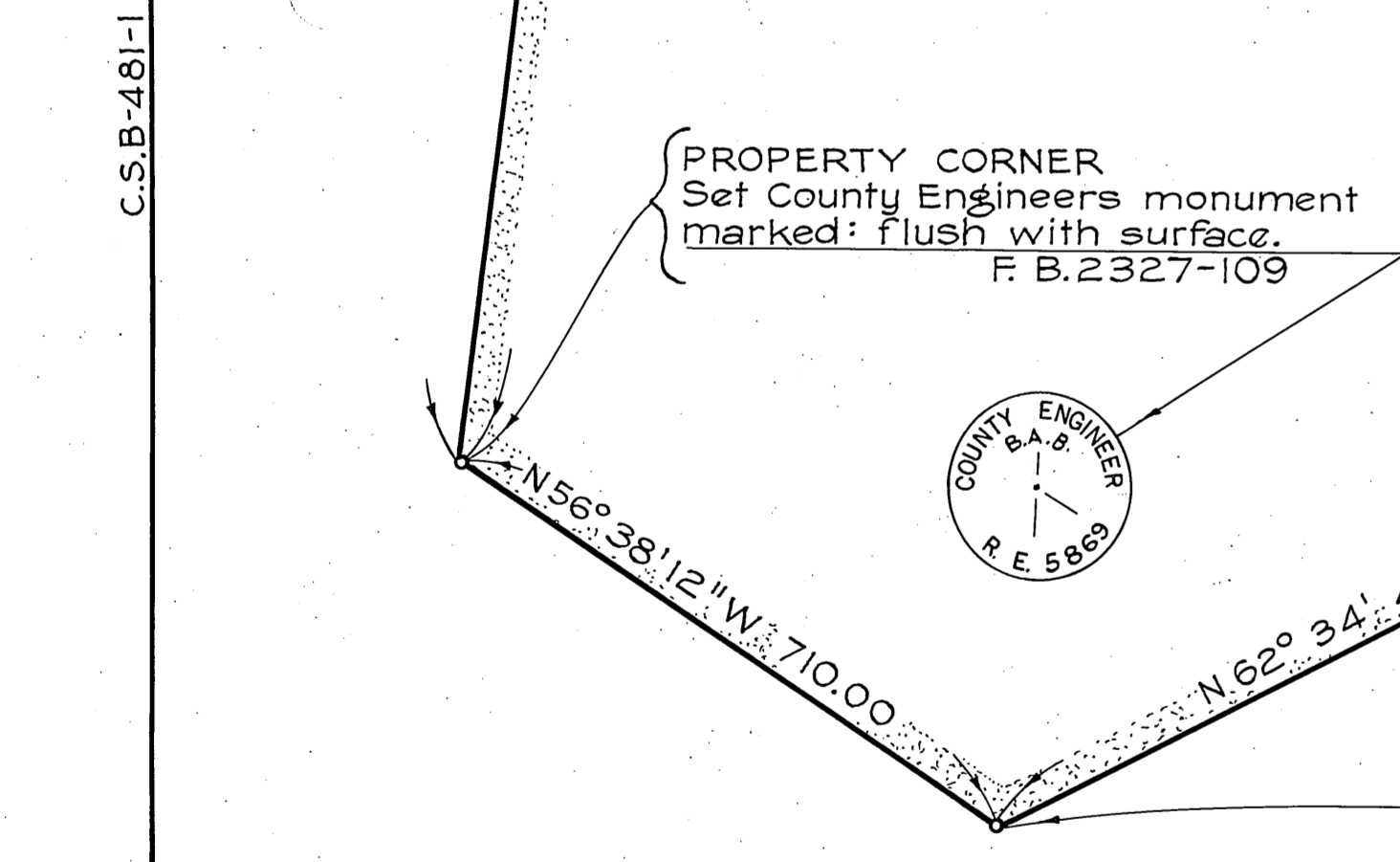
SECTION 32

T. 1 N., R. 10 W.
T. 1 S., R. 10 W.

SECTION 5

SANTA FE DAM RECREATIONAL AREA

SURVEY CONTROL STATION
"AZUSA D-11"
N. 4.153, 812.51
E. 4.297, 350.57
A.L.A. County Survey Control
System monument. See F.B.
940-31-52. F.B.2327-14



ARROW (000) C.S.B-481-1 (120) C.F. 2159 (000) F.M. 11969-1 HWY. (000)

Set 1" iron pipe, conc. plug, & brass tag marked "L.A.CO. ENGR." 6" below surface. F.B.2327-96

WITNESS CORNER
Set County Engineers monument marked: 2" above surface. F.B.2327-96.

PROPERTY CORNER
SW corner lot 1, Subdivision No.2, Azusa Land & Water Co., M.R.43-94. Found County Surveyors monument marked: 18" below surface. See F.B. 235-37, C.S.B-481-1. F.B.2327-96

WITNESS CORNER
Set County Engineers monument marked: 2" above surface. F.B.2327-96.

PROPERTY CORNER
SW corner lot 10, Subdivision No.2, Azusa Land & Water Co., M.R.43-94. Set 1" iron pipe, conc. plug, tag marked "L.A.CO.ENGR." flush with surface, by intersection. F.B.2327-86

WITNESS CORNER
Set County Engineers monument marked: flush with surface. F.B.2327-86

Found 3" brass cap monument 6" above surface. See F.B.1048-6. F.B.2327-87

Set 1" iron pipe, conc. plug, tag & brass tag marked "L.A.CO.ENGR." 2" above surface. F.B.2327-87

WITNESS CORNER
Set County Engineers monument marked: 12" below surface. F.B.2327-87

ANGLE POINT
E. 1/4 SECTION CORNER SECTION 5, T.1S., R.10W. Nothing set. Established at record distance (10.00) from the north per F.B. 1047-34. F.B.2327-88

Found 2" x 2" stake & nail 8" below surface. See F.B.1047-6 & C.S.B-481-1. F.B.2327-88

PROPERTY CORNER
Set 1" iron pipe, conc. plug, tack & brass tag marked "L.A.CO.ENGR." 2" above surface. F.B.2327-42,84

PROPERTY CORNER
Set County Engineers monument marked: F.B.2327-105

PROPERTY CORNER
Nothing set

P.O.S.T. - Set 1" iron pipe, conc. plug, & brass tag marked "L.A.CO.ENGR." 12" above surface. F.B.2327-45,104

P.I. - Set lead, tack & brass tag marked "L.A.CO.ENGR." 104,103. F.B.2327-104,103

WITNESS CORNER
Set County Engineers monument marked: 30" below surface. F.B.2327-95

PROPERTY CORNER
SE corner lot 11, Subdivision No.2, Azusa Land & Water Co., M.R.43-94. Found 1" iron pipe 2" above surface. See L.A.Co.F.C.F.B.FFB49-23, C.S.B-481-1. F.B.2327-93

M. R. 43 - 94
N 89° 54' 08" E 1319.61

WITNESS CORNER
Set County Engineers monument marked: 18" below surface. F.B.2327-93

Found 2" iron pipe, plug & tag marked "R.E.4408" flush with surface. See TR.NO.21808, M.B. 650-9-10. F.B.2327-70.

PROPERTY CORNER
SW Corner TR.21808, M.B.650-9-10. Established by intersection. Nothing set

Found 2" iron pipe & tag marked "R.E.617" flush with surface. F.B.2327-86

WITNESS CORNER
Set County Engineers monument marked: flush with surface. F.B.2327-86

PROPERTY CORNER
SE corner lot 10, Subdivision No.2, Azusa Land & Water Co., M.R.43-94. Found 2" iron pipe & tag marked "R.E.617", 4" above surface. F.B.2327-71

WITNESS CORNER
Set County Engineers monument marked: 4" above surface. F.B.2327-63

Found 2" x 2" stake & nail 8" below surface. See F.B.1047-71. F.B.2327-88

Found 2" x 2" stake & nail 8" below surface. See F.B.1047-71. F.B.2327-88

Found 2" x 2" stake & nail 8" below surface. See F.B.1047-71. F.B.2327-88

Found 2" x 2" stake & nail 8" below surface. See F.B.1047-71. F.B.2327-88

Found 2" x 2" stake & nail 8" below surface. See F.B.1047-71. F.B.2327-88

Found 2" x 2" stake & nail 8" below surface. See F.B.1047-71. F.B.2327-88

Found 2" x 2" stake & nail 8" below surface. See F.B.1047-71. F.B.2327-88

Found 2" x 2" stake & nail 8" below surface. See F.B.1047-71. F.B.2327-88

Found 2" x 2" stake & nail 8" below surface. See F.B.1047-71. F.B.2327-88

Found 2" x 2" stake & nail 8" below surface. See F.B.1047-71. F.B.2327-88

Found 2" x 2" stake & nail 8" below surface. See F.B.1047-71. F.B.2327-88

Found 2" x 2" stake & nail 8" below surface. See F.B.1047-71. F.B.2327-88

Found 2" x 2" stake & nail 8" below surface. See F.B.1047-71. F.B.2327-88

Found 2" x 2" stake & nail 8" below surface. See F.B.1047-71. F.B.2327-88

Found 2" x 2" stake & nail 8" below surface. See F.B.1047-71. F.B.2327-88

Found 2" x 2" stake & nail 8" below surface. See F.B.1047-71. F.B.2327-88

WITNESS CORNER
Set County Engineers monument marked: in handhole. F.B.1452-186.

PROPERTY CORNER
SE corner lot 11, Subdivision No.2, Azusa Land & Water Co., M.R.43-94. Found 1" iron pipe, brass cap flush with surface. See F.B. 1047-72. F.B.2327-65

BOUNDARY CITY OF IRWINDALE
N 89° 48' 13" E 1321.38

PROPERTY CORNER
Set County Engineers monument marked: flush with surface. F.B.2327-81

PROPERTY CORNER
Set County Engineers monument marked: flush with surface. F.B.2327-81

PROPERTY CORNER
Set County Engineers monument marked: flush with surface. F.B.2327-81

PROPERTY CORNER
Set County Engineers monument marked: flush with surface. F.B.2327-81

PROPERTY CORNER
Set County Engineers monument marked: flush with surface. F.B.2327-81

PROPERTY CORNER
Set County Engineers monument marked: flush with surface. F.B.2327-81

PROPERTY CORNER
Set County Engineers monument marked: flush with surface. F.B.2327-81

PROPERTY CORNER
Set County Engineers monument marked: flush with surface. F.B.2327-81

PROPERTY CORNER
Set County Engineers monument marked: flush with surface. F.B.2327-81

PROPERTY CORNER
Set County Engineers monument marked: flush with surface. F.B.2327-81

PROPERTY CORNER
Set County Engineers monument marked: flush with surface. F.B.2327-81

PROPERTY CORNER
Set County Engineers monument marked: flush with surface. F.B.2327-81

PROPERTY CORNER
Set County Engineers monument marked: flush with surface. F.B.2327-81

PROPERTY CORNER
Set County Engineers monument marked: flush with surface. F.B.2327-81

PROPERTY CORNER
Set County Engineers monument marked: flush with surface. F.B.2327-81

PROPERTY CORNER
Set County Engineers monument marked: flush with surface. F.B.2327-81

PROPERTY CORNER
Set County Engineers monument marked: flush with surface. F.B.2327-81

PROPERTY CORNER
Set County Engineers monument marked: flush with surface. F.B.2327-81

PROPERTY CORNER
Set County Engineers monument marked: flush with surface. F.B.2327-81

PROPERTY CORNER
Set County Engineers monument marked: flush with surface. F.B.2327-81

PROPERTY CORNER
Set County Engineers monument marked: flush with surface. F.B.2327-81

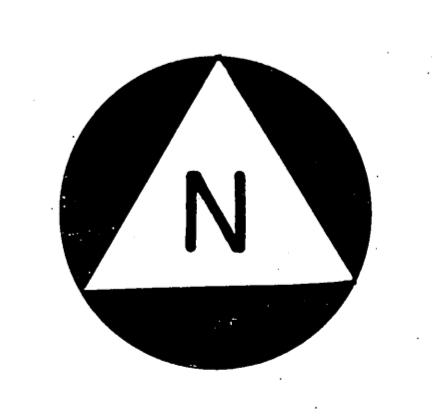
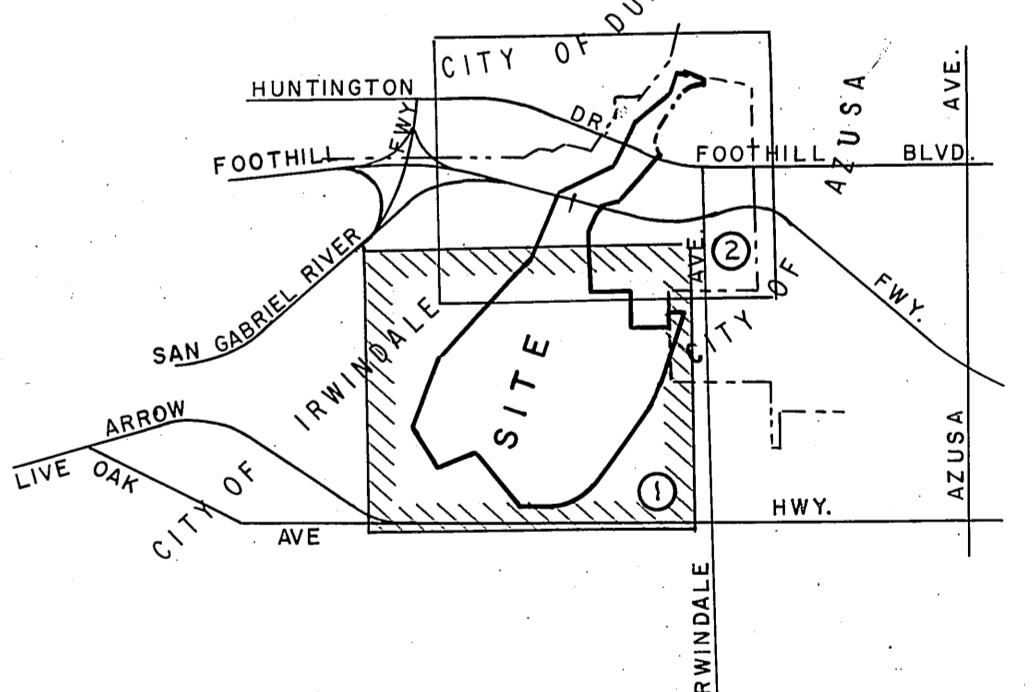
PROPERTY CORNER
Set County Engineers monument marked: flush with surface. F.B.2327-81

PROPERTY CORNER
Set County Engineers monument marked: flush with surface. F.B.2327-81

PROPERTY CORNER
Set County Engineers monument marked: flush with surface. F.B.2327-81

PROPERTY CORNER
Set County Engineers monument marked: flush with surface. F.B.2327-81

PROPERTY CORNER
Set County Engineers monument marked: flush with surface. F.B.2327-81



SCALE IN FEET
0 200 400 600

COUNTY OF LOS ANGELES DEPARTMENT OF COUNTY ENGINEER HARVEY T. BRANDT - COUNTY ENGINEER PREPARED BY SURVEY DIVISION GEORGE J. FRANCESCHINI - DIVISION ENGINEER SURVEYED BY FLOYD BROOKS CHECKED BY R.G. HILARIO DRAWN BY GEORGE BOYER	BOUNDARY MAP OF SANTA FE DAM RECREATIONAL AREA		COUNTY SURVEYOR'S MAP NO. B-5158	REVISION 2 NO. BY DATE
	SHEET 1 OF 2 SHEETS		FILED: <i>Morgan & Co.</i> 1972 COUNTY ENGINEER DEPUTY	SURVEYED JUN 15, 1970
	BASIS OF BEARINGS CALIFORNIA COORDINATE SYSTEM, ZONE 7		REFERENCE F. B. 2327-119-168	JOB NUMBER 0055.16
			INDEX MAP NO. 4-B-47	

