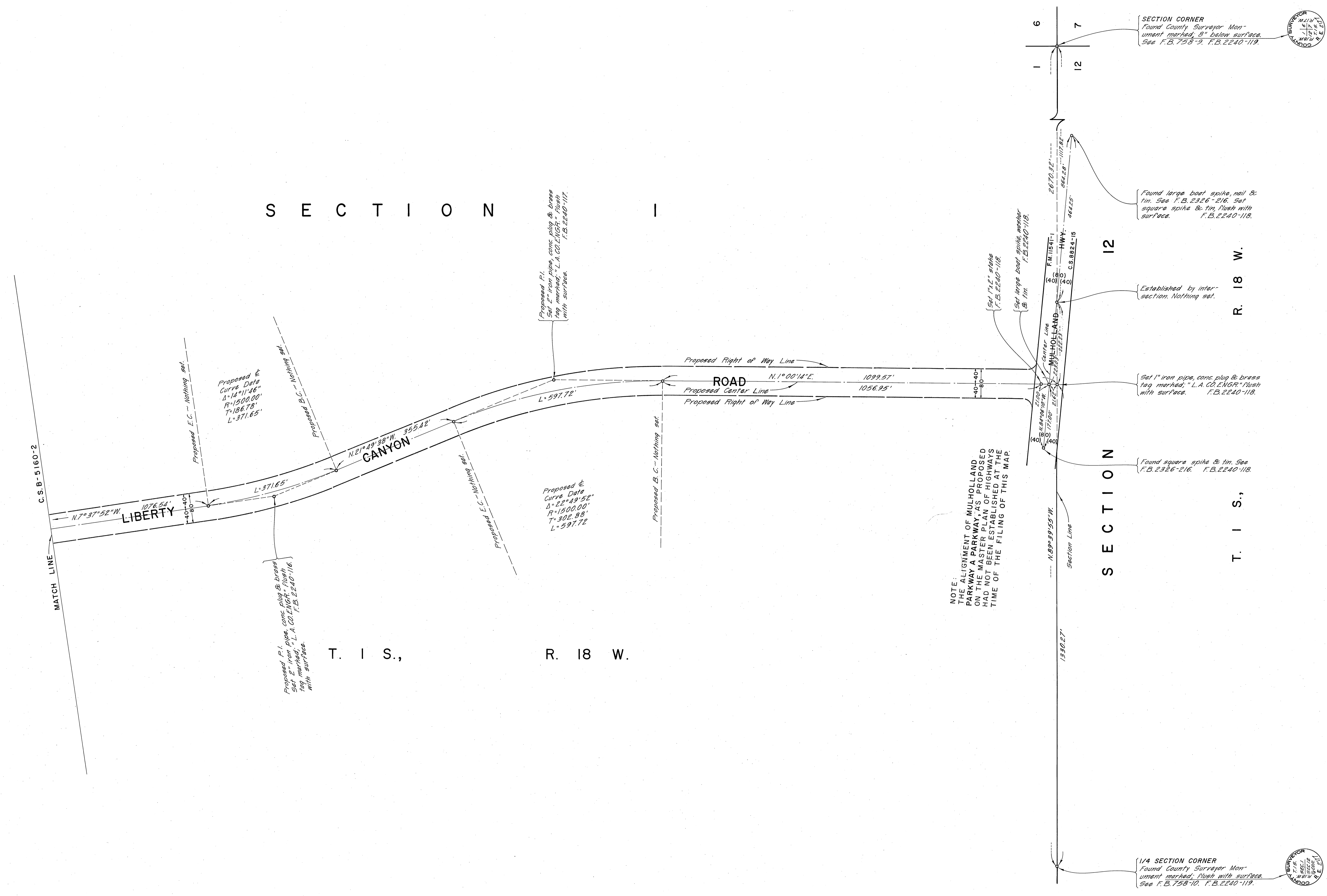


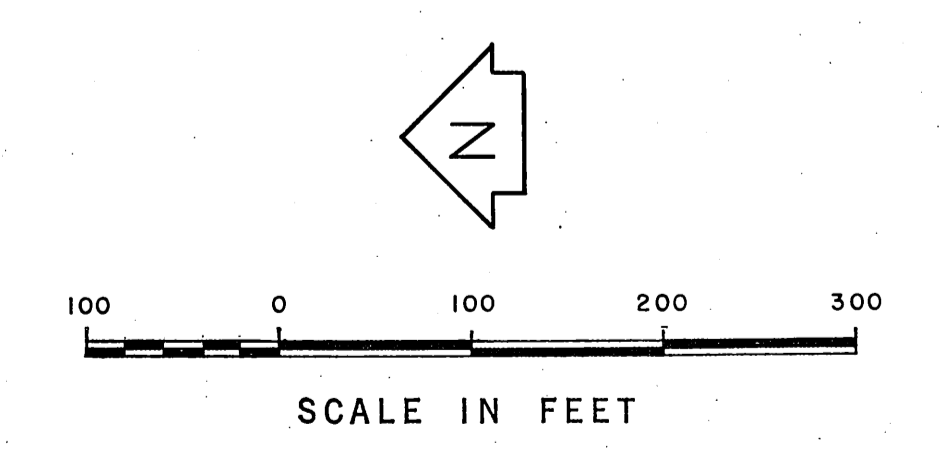
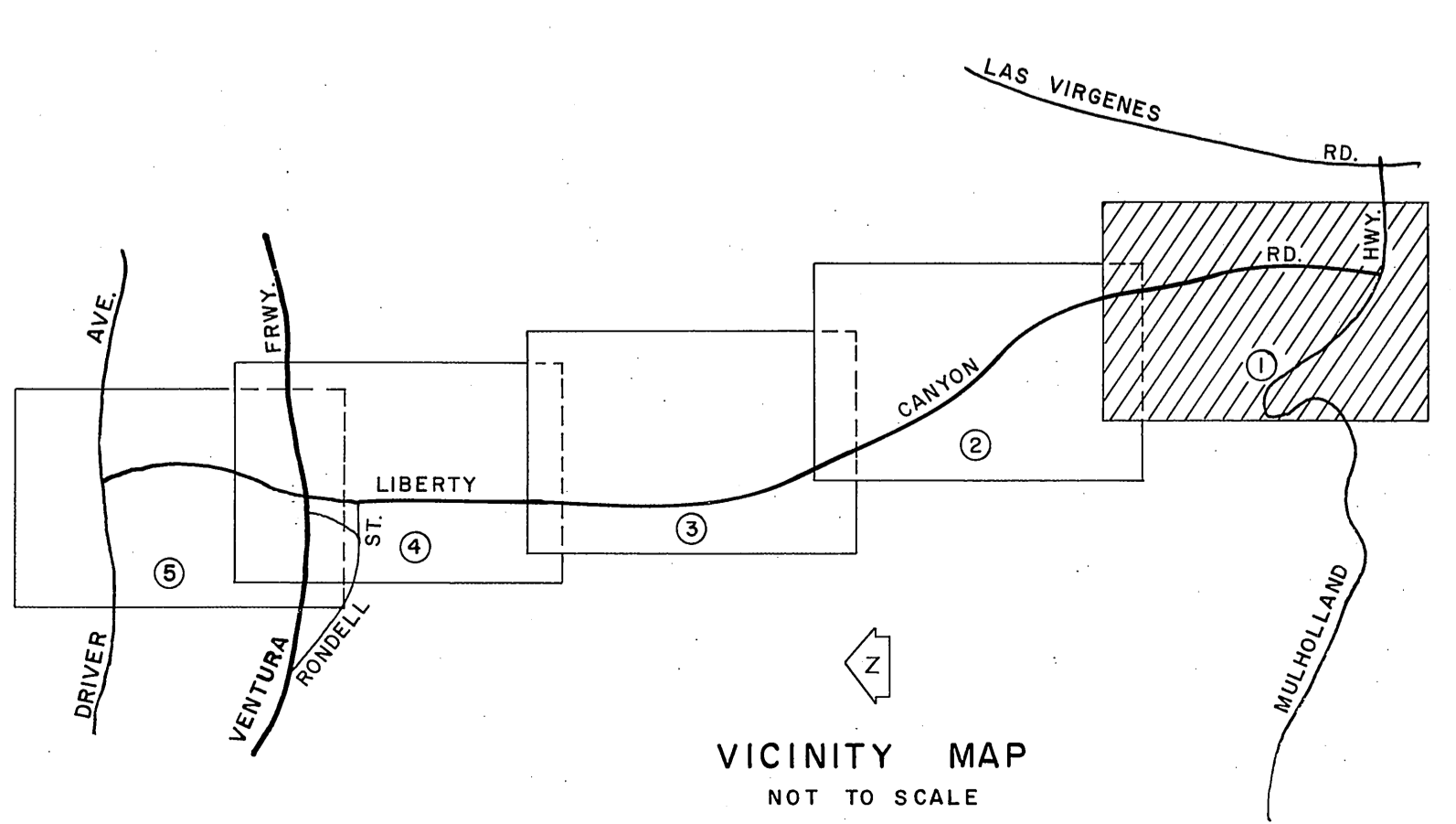
SECTION I

SECTION 12

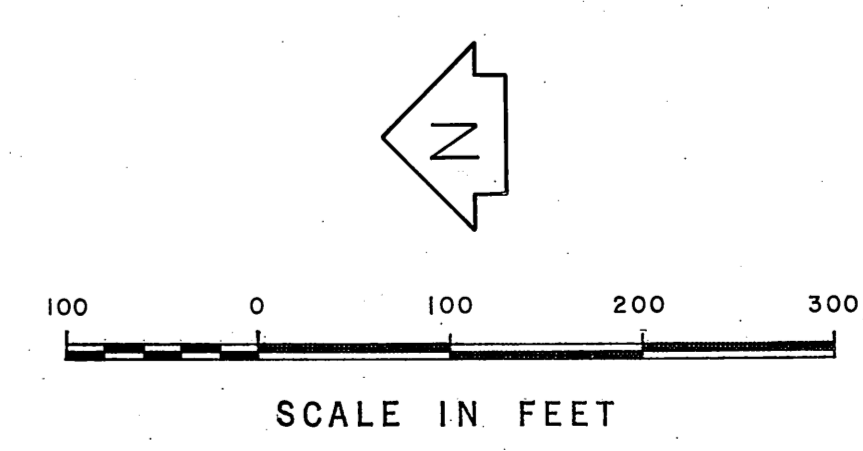
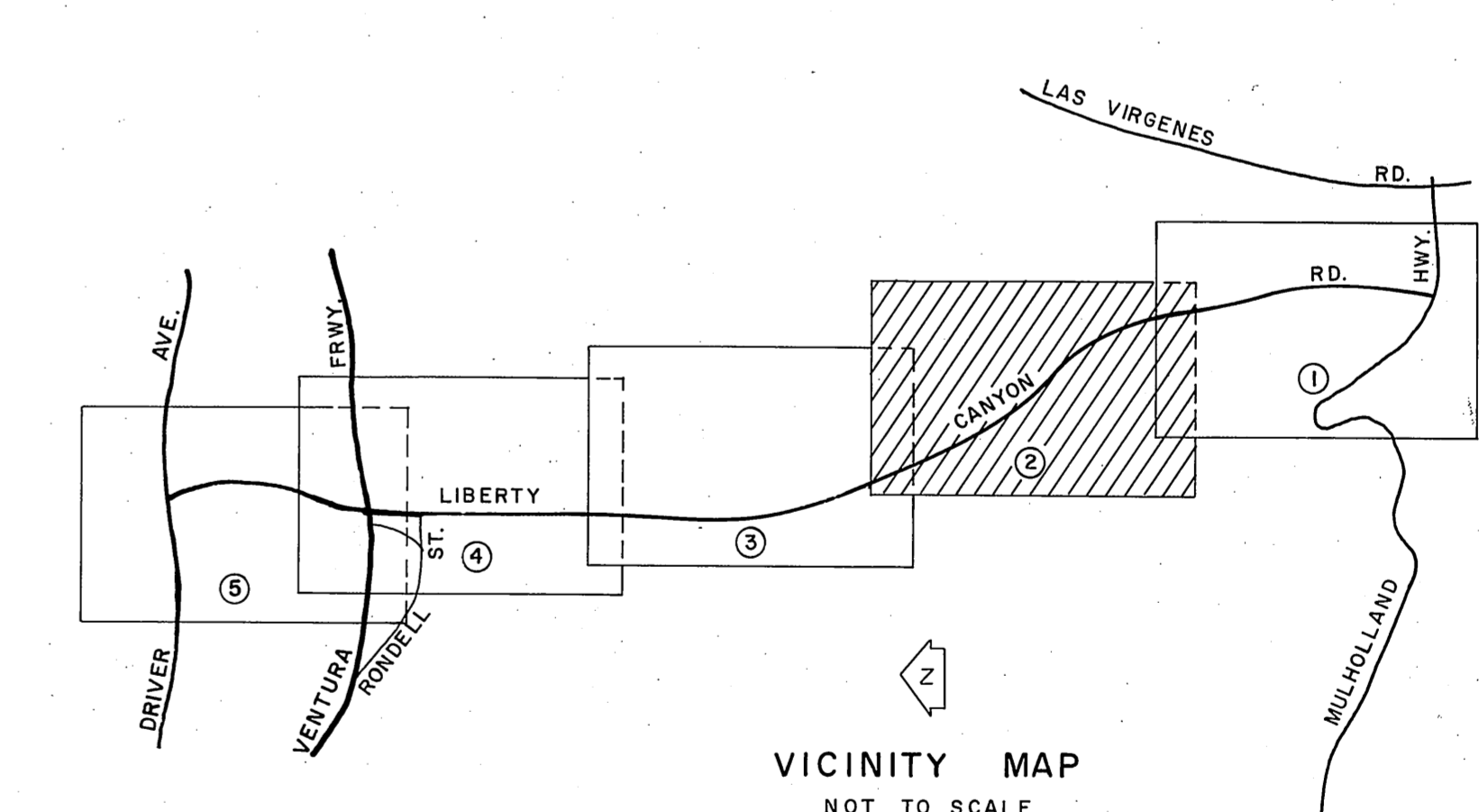
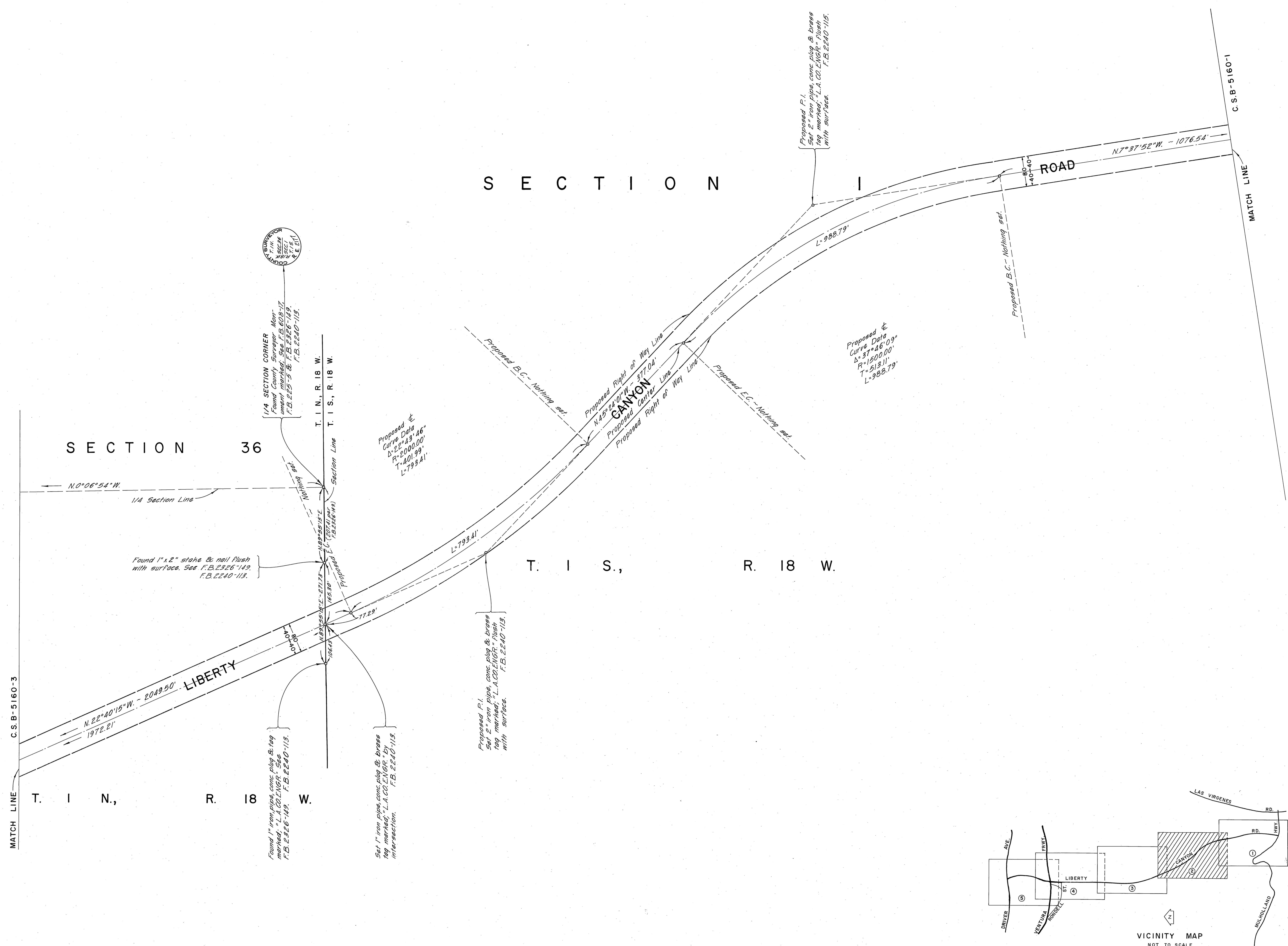


T. I. S., R. 18 W.

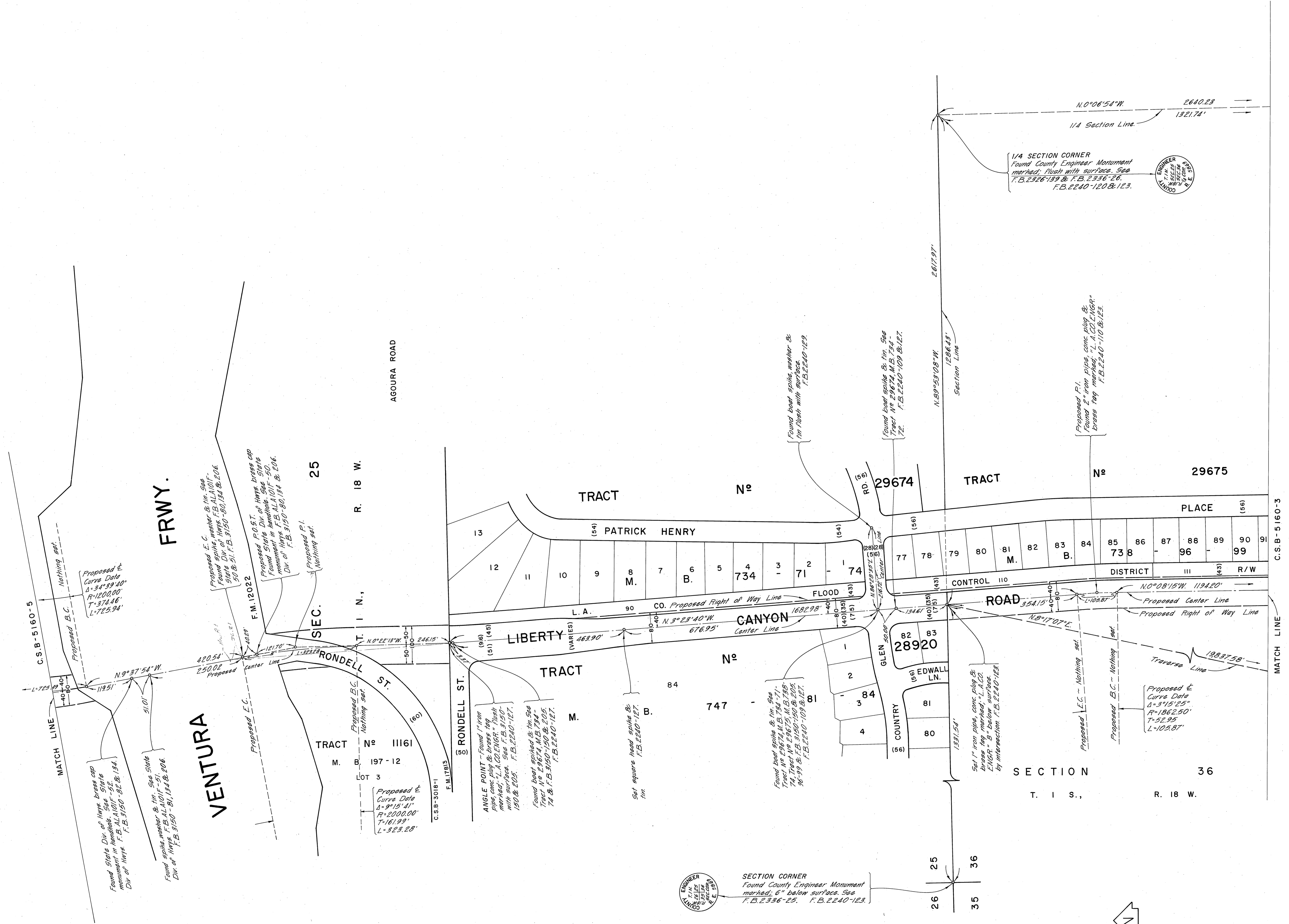
T. I. S., R. 18 W.



COUNTY OF LOS ANGELES DEPARTMENT OF COUNTY ENGINEER HARVEY T. BRANDT - COUNTY ENGINEER PREPARED BY SURVEY DIVISION GEORGE A. FRANCESCHINI - DIVISION ENGINEER SURVEYED BY - G. DREIER CHECKED BY - R. MANOR DRAWN BY - S. BRIONES	ALIGNMENT MAP OF		COUNTY SURVEYOR'S MAP NO. B-5160	REVISION NO. BY DATE
	LIBERTY CANYON ROAD		SHEET 1 OF 5 SHEETS FILED: <i>June 20, 1967</i>	
	FROM		SURVEYED MAY 1967 - JULY 1968	
	MULHOLLAND HIGHWAY		REFERENCE F. B. 2240-107-127 F. B. 3150-60-206	
	TO		JOB NUMBER 0095.90	INDEX MAP NO. 144-057 153-057
DRIVER AVENUE		BASIS OF BEARINGS		
CALIFORNIA COORDINATE SYSTEM, ZONE 7				



COUNTY OF LOS ANGELES DEPARTMENT OF COUNTY ENGINEER HARVEY T. BRANT - COUNTY ENGINEER PREPARED BY SURVEY DIVISION GEORGE J. FRANCESCHINI - DIVISION ENGINEER SURVEYED BY G. DREIER CHECKED BY R. MANOR DRAWN BY S. BRIONES	ALIGNMENT MAP OF LIBERTY CANYON ROAD FROM MULHOLLAND HIGHWAY TO DRIVER AVENUE		COUNTY SURVEYOR'S MAP NO. B-5160 SHEET 2 OF 5 SHEETS FILED: <i>June 28, 1972</i> COUNTY MAY 1967 - JULY 1968	REVISION NO. BY DATE
	BASIS OF BEARINGS CALIFORNIA COORDINATE SYSTEM, ZONE 7		REFERENCE F. B. 2240 - 107 - 127 F. B. 3150 - 80 - 226 JOB NUMBER 0095.90	INDEX MAP NO. 144 - 057 159 - 057
			MAY 1967 - JULY 1968	
			REFERENCE F. B. 2240 - 107 - 127 F. B. 3150 - 80 - 226	



Proposed E. Curve Data
 $\Delta = 34^{\circ}39'40''$
 $R = 1200.00'$
 $T = 374.46'$
 $L = 723.34'$

Found State Div. of Highways cap monument in bench mark. See State Div. of Highways. F.B. 2150-82 & 134.
 Found State Div. of Highways cap monument in bench mark. See State Div. of Highways. F.B. 2150-81, 134 & 206.
 Found State Div. of Highways cap monument in bench mark. See State Div. of Highways. F.B. 2150-81, 134 & 206.

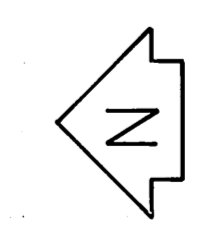
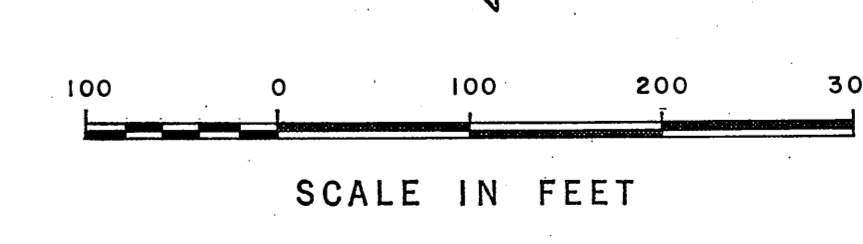
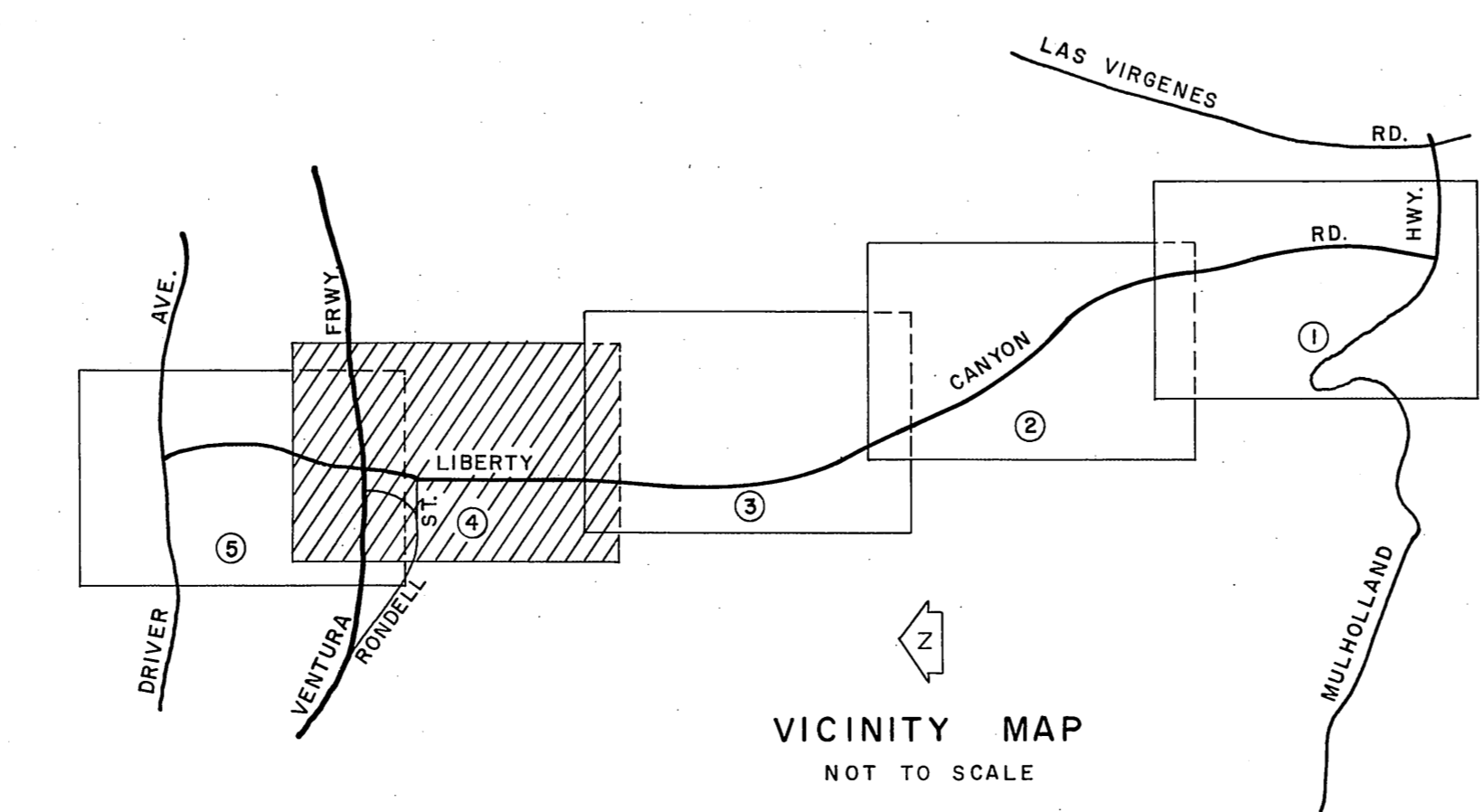
Proposed E.C. Found County Engineer Monument marked. Flush with surface. See F.B. 2240-123 & 129.
 Proposed F.O.S.T. Found County Engineer Monument marked. Flush with surface. See F.B. 2240-123 & 129.
 Proposed F.O.S.T. Found County Engineer Monument marked. Flush with surface. See F.B. 2240-123 & 129.

Proposed E. Curve Data
 $\Delta = 91^{\circ}15'41''$
 $R = 2000.00'$
 $T = 161.99'$
 $L = 323.23'$

ANGLE POINT - Found 1/4" iron pipe cap & brass tag
 Tract No. 29674, M.B. 734, 71, 74 & F.B. 2240-109 & 127.
 Found bench spike & iron cap
 Tract No. 29674, M.B. 734, 71, 74 & F.B. 2240-109 & 127.

SECTION CORNER
 Found County Engineer Monument marked. 4" below surface. See F.B. 2240-123 & 129.

Proposed E. Curve Data
 $\Delta = 31^{\circ}15'25''$
 $R = 1862.50'$
 $T = 32.95'$
 $L = 105.87'$



COUNTY OF LOS ANGELES DEPARTMENT OF COUNTY ENGINEER HARVEY T. BRANDT - COUNTY ENGINEER PREPARED BY SURVEY DIVISION GEORGE J. FRANCESCHINI - DIVISION ENGINEER SURVEYED BY S. DREIER CHECKED BY R. MANOR DRAWN BY S. BRIONES	ALIGNMENT MAP OF LIBERTY CANYON ROAD FROM MULHOLLAND HIGHWAY TO DRIVER AVENUE BASIS OF BEARINGS CALIFORNIA COORDINATE SYSTEM, ZONE 7		COUNTY SURVEYOR'S MAP NO. B-5160 SHEET 4 OF 5 SHEETS FILED: <i>June 28, 1972</i> <i>R.D. Mitchell</i> SURVEYED MAY 1967 - JULY 1968 REFERENCE F.B. 2240-107-127 F.B. 3150-80-206 JOB NUMBER 0095.90	REVISION NO. BY DATE 144-1357 189-087
			INDEX MAP NO. 189-087	

