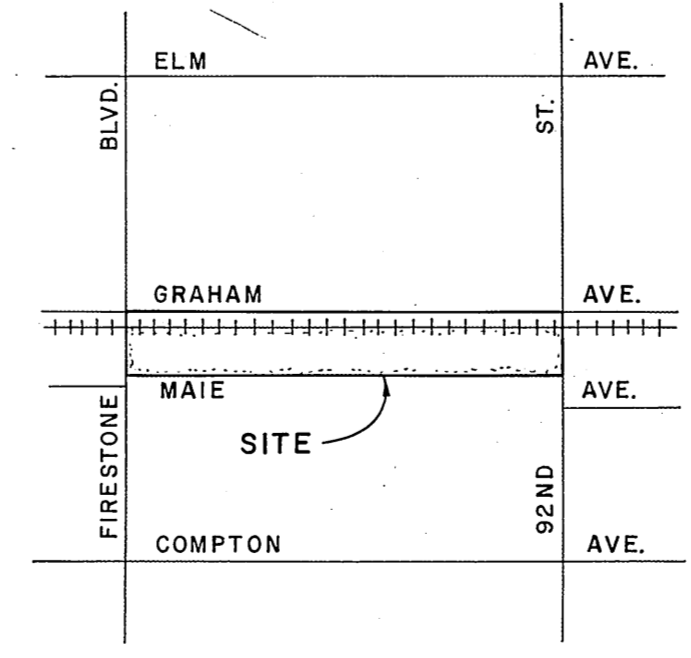
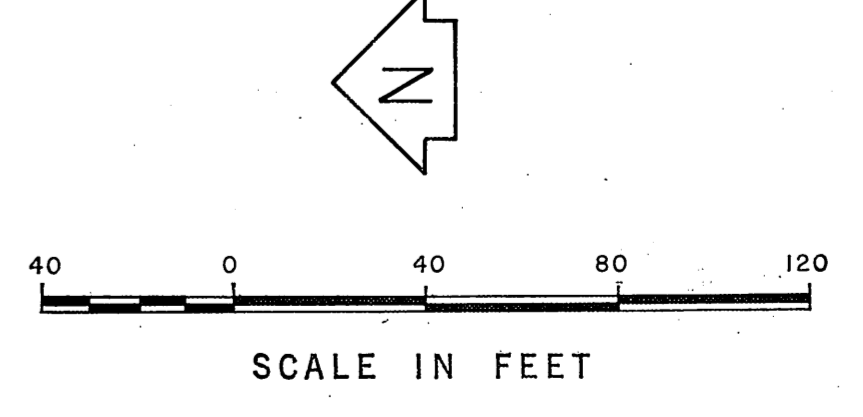


C.S.B-5162-2  
MATCH LINE



VICINITY MAP  
NOT TO SCALE



COUNTY OF LOS ANGELES DEPARTMENT OF COUNTY ENGINEER HARVEY T. BRANDT - COUNTY ENGINEER PREPARED BY SURVEY DIVISION GEORGE J. FRANCESCHINI - DIVISION ENGINEER SURVEYED BY <u>J. BAZEN</u> CHECKED BY <u>R. SHORT</u> DRAWN BY <u>S. BRIONES</u>	<b>BOUNDARY MAP OF</b> <b>FLORENCE - FIRESTONE</b> <b>COMMUNITY</b> <b>NEIGHBORHOOD PARK</b> FOR TOPOGRAPHY SEE SURVEY DIVISION FILE MAP N <sup>o</sup> . P. T. 503.		COUNTY SURVEYOR'S MAP NO. <b>B-5162</b> SHEET 1 OF 2 SHEETS FILED: <u>May 31, 1976</u> <u>By: [Signature]</u> COUNTY SURVEYED <b>MAY, 1971</b> REFERENCE F. B. 1876-85-92 F. B. 2176-12-8-93 F. B. 2776-205-234	REVISION NO. BY DATE
	BASIS OF BEARINGS <b>THE BEARING OF 92nd STREET (N.89°43'10"W.)</b> AS SHOWN ON C.S.B-3019.		JOB NUMBER <b>0056.11</b>	INDEX MAP NO. <b>7</b>
			SURVEYED <b>MAY, 1971</b>	
			REFERENCE F. B. 1876-85-92 F. B. 2176-12-8-93 F. B. 2776-205-234	

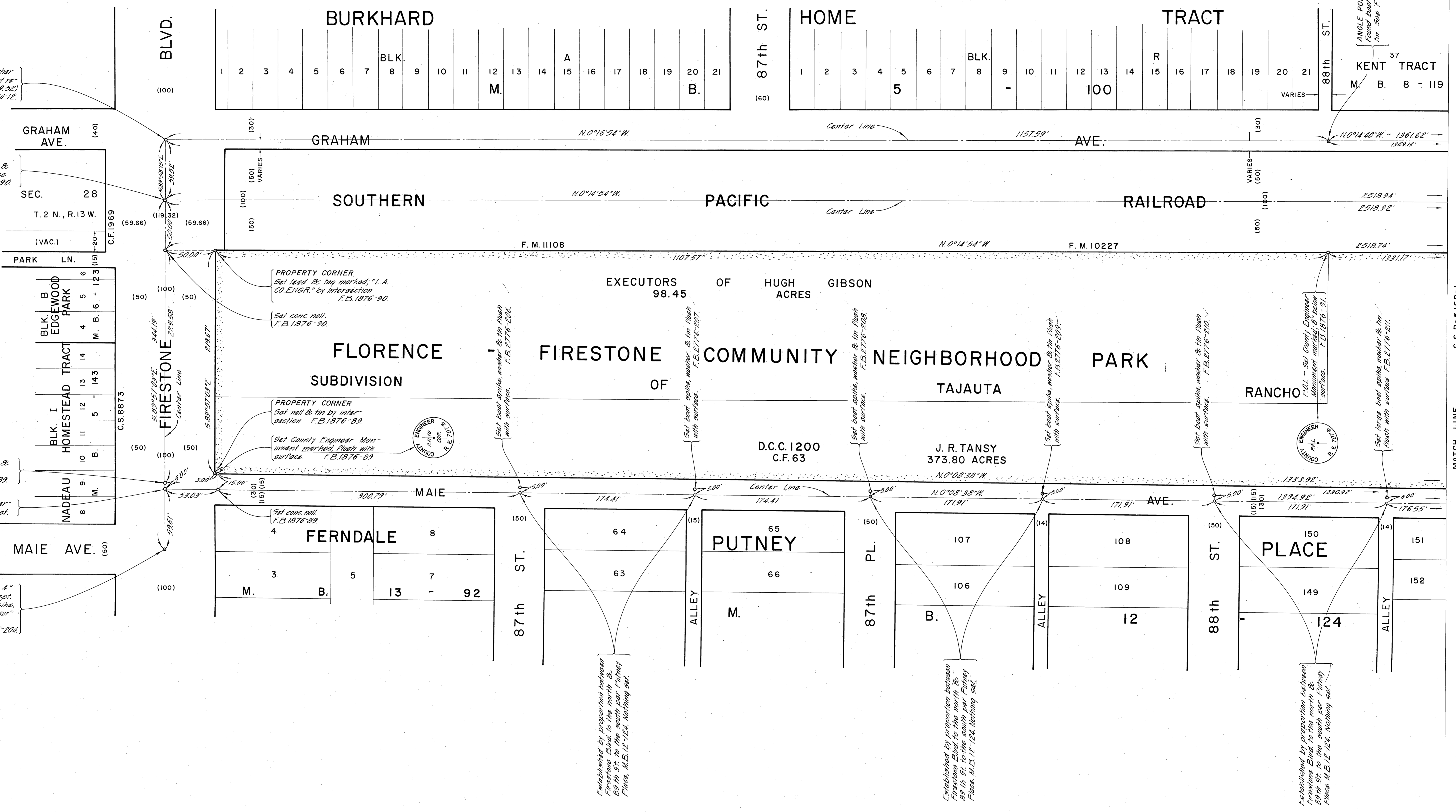
Set large boat spike washer & tin flush with surface of record angle & distance (23.22) per F.B.2776-233, F.B.2764-12.

ANGLE POINT Found boat spike, washer & tin flush with surface. See F.B.2776-233, F.B.1876-90, F.B.3273-221.

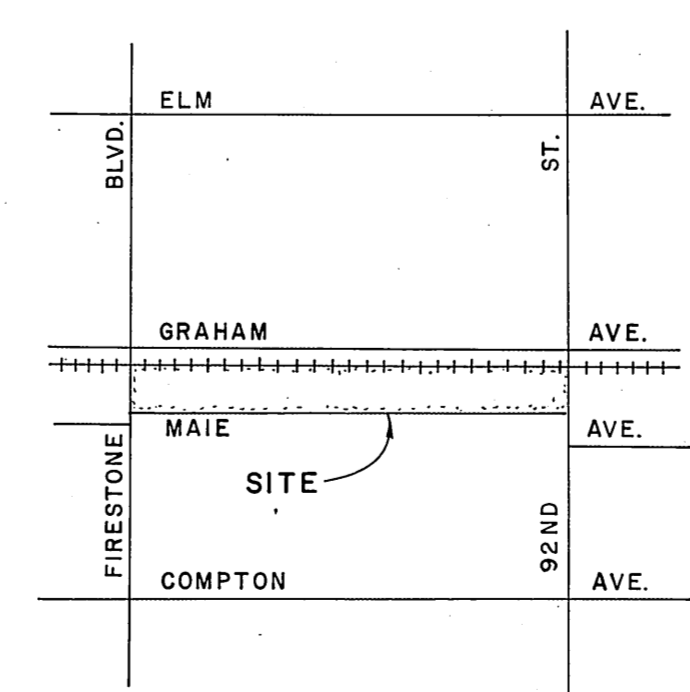
Found square head spike & tin 1" below surface. See F.B.2776-205, F.B.1876-89.

Established by intersection. Nothing set.

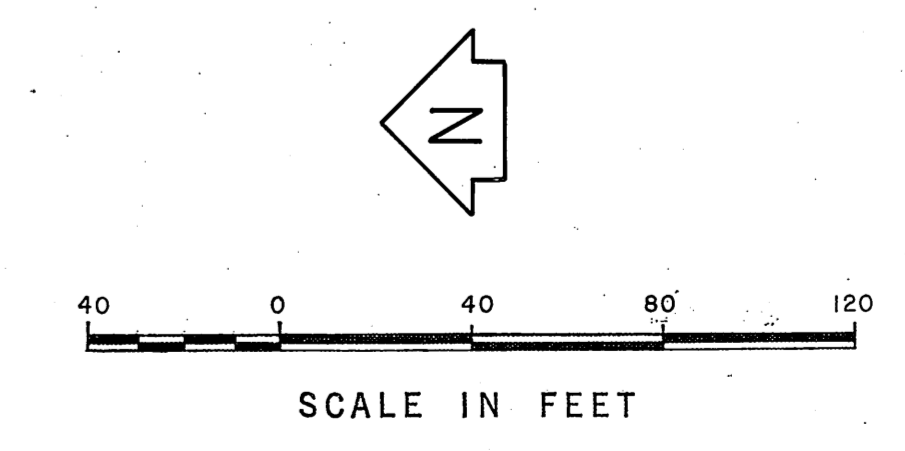
Found cut spike & washer 4" below surface. See Rid Dept. F.B.7413-307. Set boat spike, washer & tin flush with surface over same. See F.B.3270-3369, F.B.2776-204.



C.S.B-5162-1



VICINITY MAP NOT TO SCALE



COUNTY OF LOS ANGELES DEPARTMENT OF COUNTY ENGINEER HARVEY T. BRANDT - COUNTY ENGINEER PREPARED BY SURVEY DIVISION GEORGE J. FRANCESCHINI - DIVISION ENGINEER SURVEYED BY J. BAZEN CHECKED BY R. SHORT DRAWN BY S. BRIONES	<b>BOUNDARY MAP OF          FLORENCE - FIRESTONE          COMMUNITY          NEIGHBORHOOD PARK</b> FOR TOPOGRAPHY SEE SURVEY DIVISION FILE MAP N°. P.T. 503.		COUNTY SURVEYOR'S MAP NO. <b>B-5162</b>	REVISION NO. BY DATE	
	SHEET 2 OF 2 SHEETS FILED: <i>Map 5 22 19 22</i> DEPT.		SURVEYED MAY, 1971		
	BASIS OF BEARINGS THE BEARING OF 92nd STREET (N.89°43'10"W.) AS SHOWN ON C.S.B-3019.		REFERENCE F.B.1878-85-92 F.B.2764-12869 F.B.2776-205-234	JOB NUMBER 0056.11	INDEX MAP NO. 7
			JOB NUMBER 0056.11	INDEX MAP NO. 7	