

NORTH 1/4 SEC. COR. SEC. 28  
T.2 S., R.13 W.  
Found intersection of 4 tangent  
ties on manhole rim. See  
F.B.2777-11, F.B.2779-33 &  
F.B.2347-117.  
F.B.1876-111

Found lead & tack. See F.B.2777-  
170,171 & F.B.2779-31,32.  
F.B.1876-112

Found lead & tack. See F.B.2777-  
169 & F.B.2779-30.  
F.B.1876-113

Set lead & brass tag marked "L.A.  
CO. ENGR." at record distance (165.00)  
Wily from the North Section  
Corner per Torr. Cert. #100532.  
F.B.1876-113

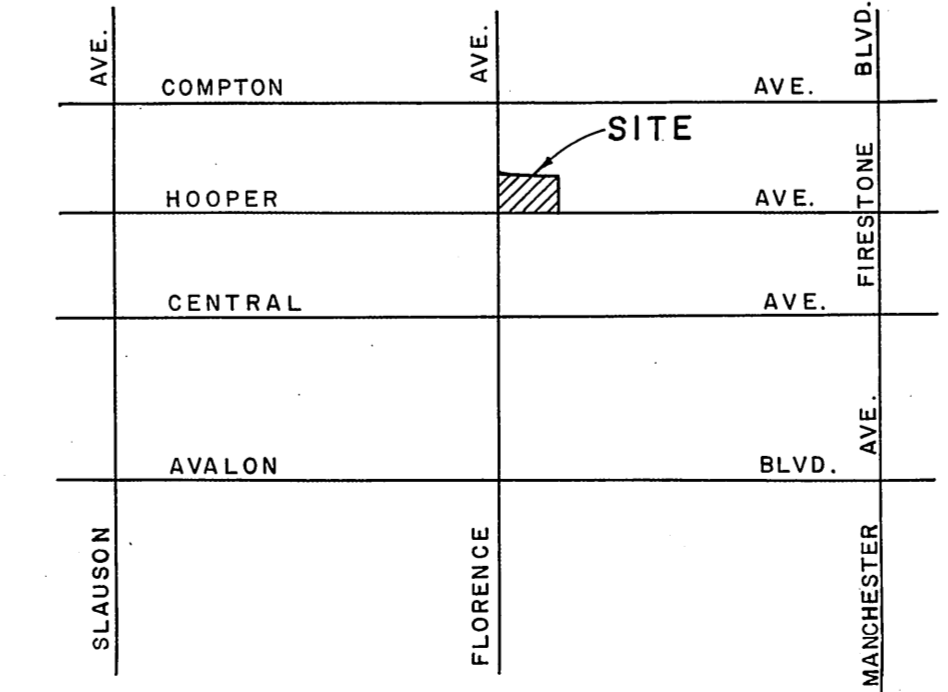
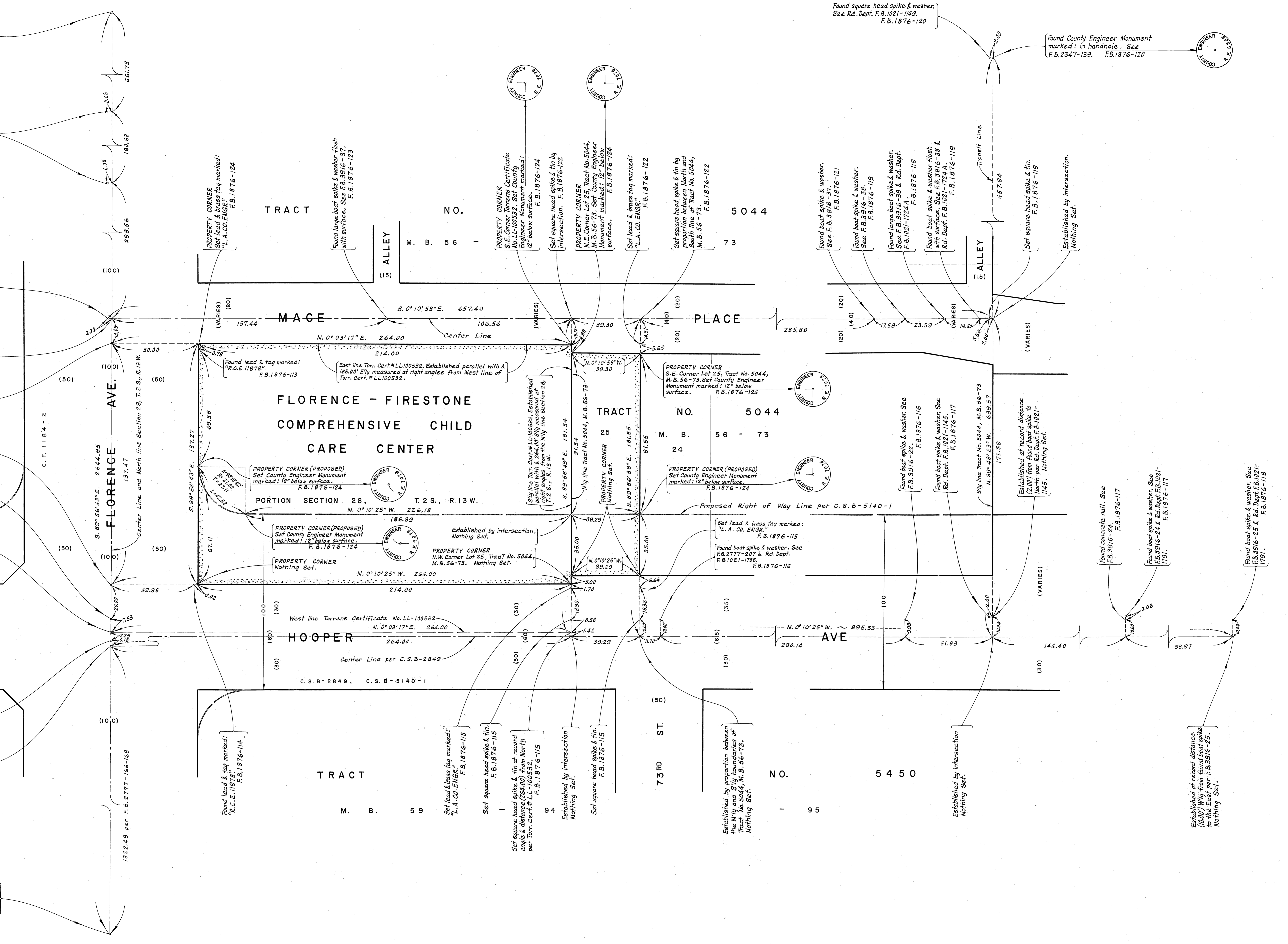
Found boat spike, washer & tin  
Flush with surface. See F.B.2347-  
163 & F.B.2777-168.  
F.B.1876-114

Set square head spike & tin at record  
distance (165.00) from the East per  
Torr. Cert. # LL100532.  
F.B.1876-114

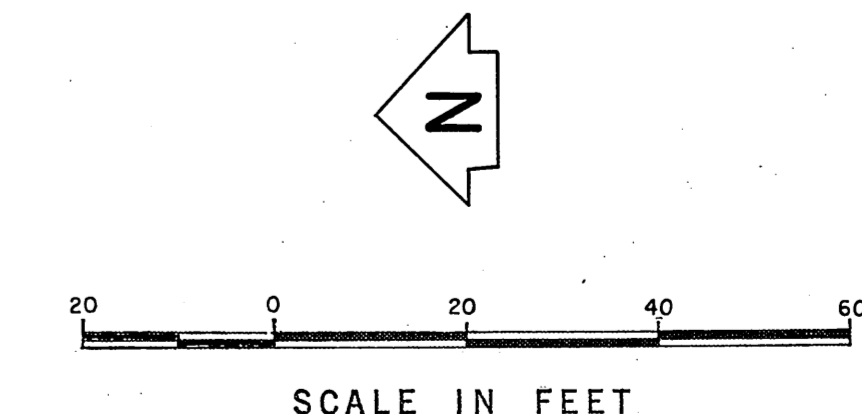
Found boat spike & washer. See Rd.  
Dept. F.B.1021-1787.  
F.B.1876-114.

Found 2"x2" stake & tack 2" below  
surface. See F.B.2777-168,  
F.B.2347-163 & Rd. Dept. F.B.1021-  
1787.  
F.B.1876-114

SECTION CORNER  
N.W. Corner Section 28, T.2 S., R.13 W.  
Found intersection of 4 tangent ties.  
See F.B.2777-166 & F.B.2779-10.



VICINITY MAP  
NOT TO SCALE



COUNTY OF LOS ANGELES DEPARTMENT OF COUNTY ENGINEER HARVEY T. BRANDT - COUNTY ENGINEER PREPARED BY SURVEY DIVISION GEORGE J. FRANCESHINI - DIVISION ENGINEER SURVEYED BY J. BAZEN CHECKED BY T. ABE DRAWN BY R.R. SHEAN, B.H. TABATA	<b>BOUNDARY MAP OF</b> <b>FLORENCE-FIRESTONE COMPREHENSIVE</b> <b>CHILD CARE CENTER</b> FOR TOPOGRAPHY SEE SURVEY DIVISION FILE MAP NO. P. T. 505 BASIS OF BEARINGS <b>THE CENTER LINE OF HOOPER AVE. (N 0° 10' 25" W)</b> <b>AS SHOWN ON C.S.B-2849.</b>		COUNTY SURVEYOR'S MAP NO. <b>B-5163</b> SHEET 1 OF 1 SHEET FILED: <i>Florence 16 1971</i> <i>R. J. ...</i> SURVEYED JUNE 1971 REFERENCE F. B. 1876-109-128 JOB NUMBER 0018.50	REVISION NO. BY DATE    INDEX MAP NO. 7
--	--	--	---	---