

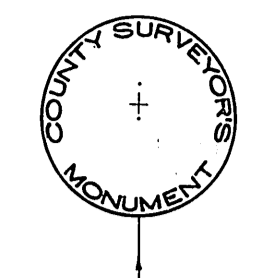
N.W. COR. SEC. 17
Found lead & track 8"
below surface. See
F. B. 1404-107, F. B. 3266-113

1/4 1/4 SECTION CORNER
Found squarehead spike &
fin per C.S.B-5148.
F. B. 3266-114, 130.

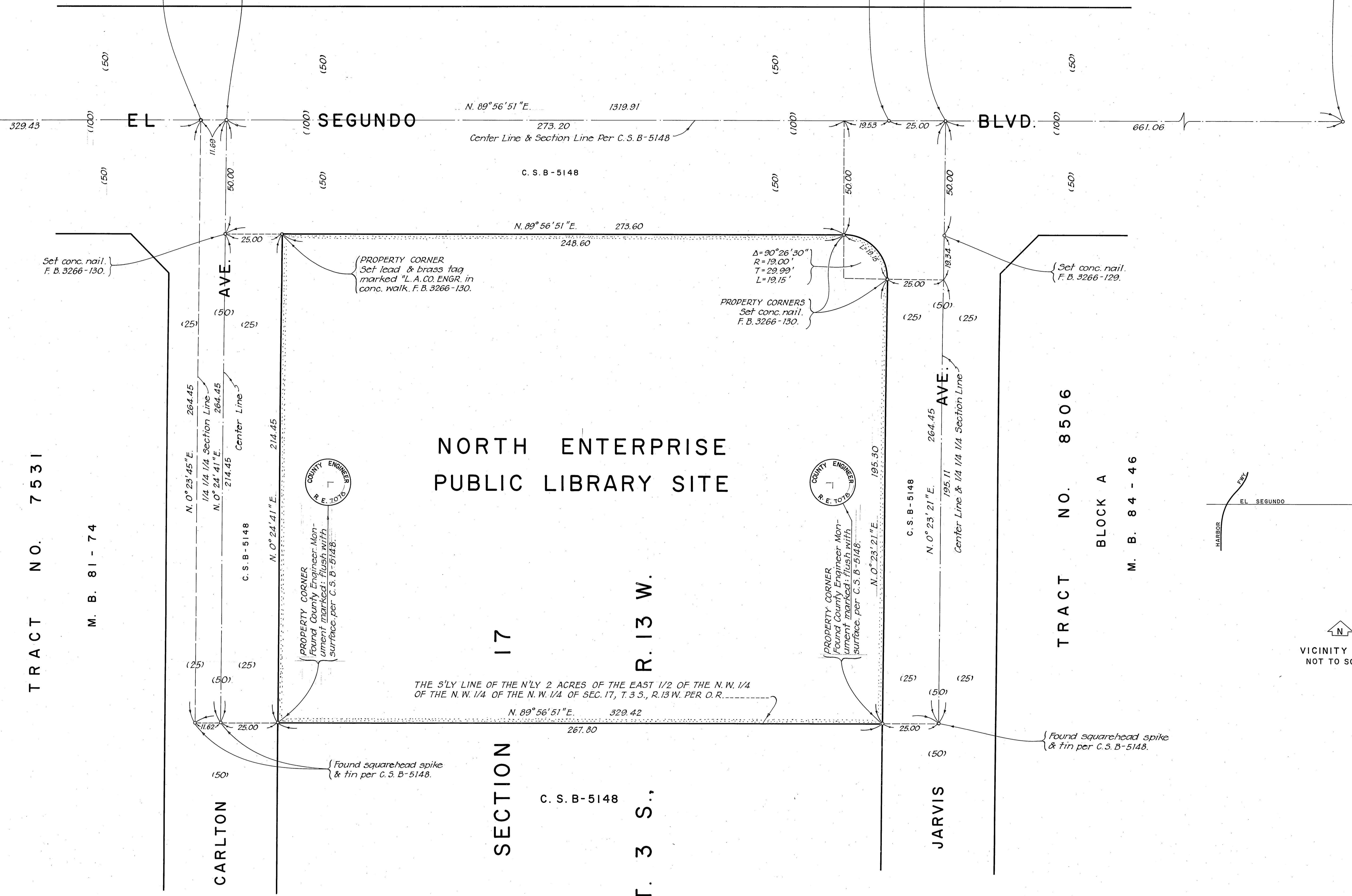
Found punchmark on boat
spike, washer & tin. See
C.S.B-5148, F. B. 3266-114, 130.

Set conc. nail.
F. B. 3266-129.

1/4 1/4 SECTION CORNER
Found punchmark on boat
spike, washer & tin 3" below
surface. See C.S.B-5148.
F. B. 3266-115, 129.



Found County Surveyors Mon-
ument marked in Lantz hole.
See F. B. 1404-111 &
F. B. 2745-125, F. B. 3266-116.



TRACT NO. 7531

M. B. 81 - 74

NORTH ENTERPRISE
PUBLIC LIBRARY SITE

SECTION 17

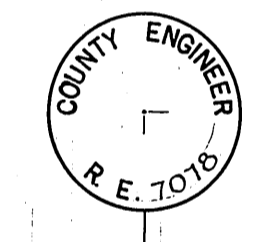
T. 3 S., R. 13 W.

TRACT NO. 8506

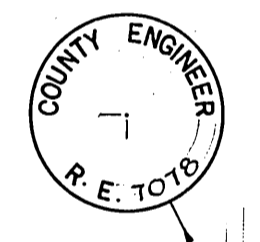
BLOCK A

M. B. 84 - 46

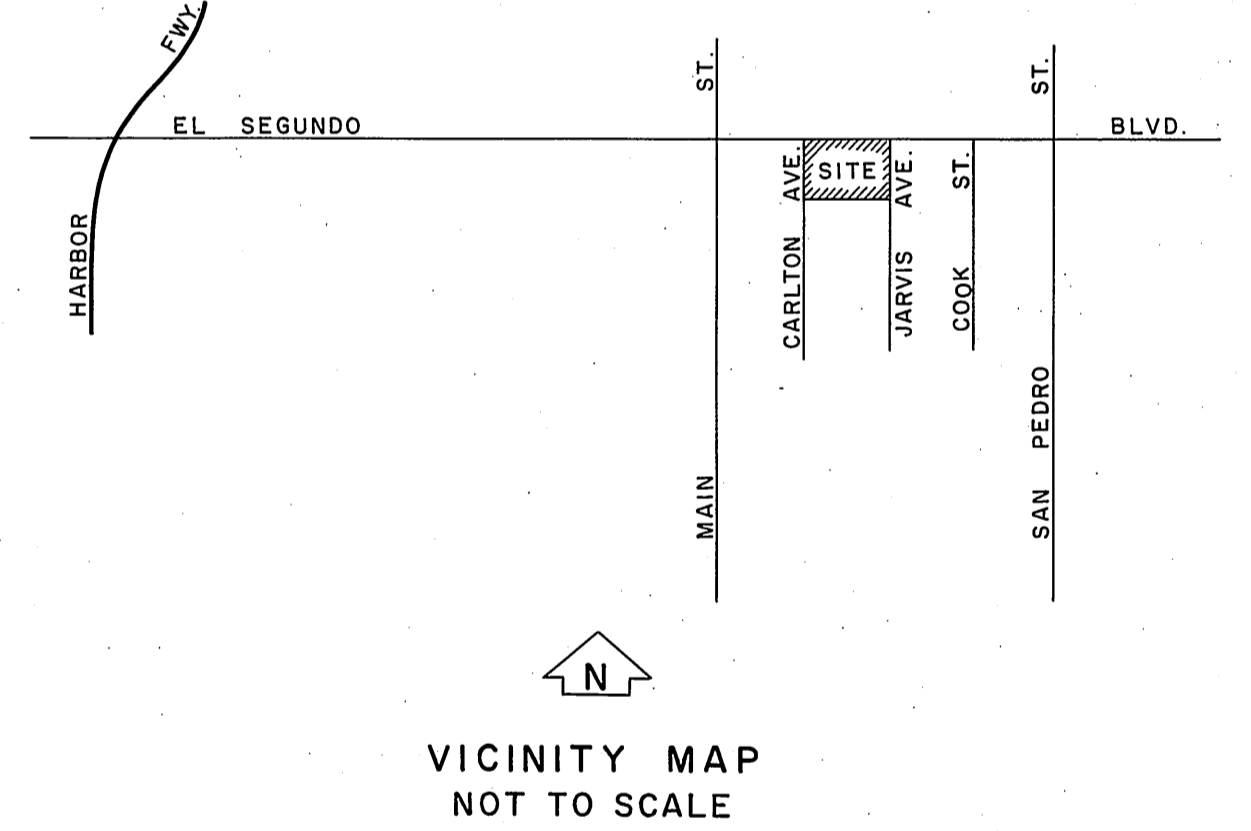
THE S'LY LINE OF THE N'LY 2 ACRES OF THE EAST 1/2 OF THE N.W. 1/4
OF THE N.W. 1/4 OF THE N.W. 1/4 OF SEC. 17, T. 3 S., R. 13 W. PER O.R.



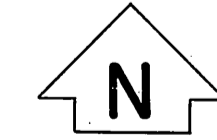
PROPERTY CORNER
Found County Engineer Mon-
ument marked: flush with
surface per C.S.B-5148.



PROPERTY CORNER
Found County Engineer Mon-
ument marked: flush with
surface per C.S.B-5148.



VICINITY MAP
NOT TO SCALE



SCALE IN FEET

COUNTY OF LOS ANGELES
DEPARTMENT OF
COUNTY ENGINEER
HARVEY T. BRANDT - COUNTY ENGINEER
PREPARED BY
SURVEY DIVISION
GEORGE J. FRANCESCHINI - DIVISION ENGINEER
SURVEYED BY - J. J. BAZEN
CHECKED BY - R. G. HILARIO
DRAWN BY - M. HAMASU

BOUNDARY MAP OF
**NORTH ENTERPRISE
PUBLIC LIBRARY SITE**
WILLOWBROOK AREA
FOR TOPOGRAPHY SEE SURVEY DIVISION
FILE MAP NO. P. T. 511.
BASIS OF BEARINGS
BEARING OF EL SEGUNDO BLVD. (N. 89° 56' 51" E.)
AS SHOWN ON C.S.B-5148.

COUNTY SURVEYOR'S MAP NO.
B-5164
SHEET 1 OF 1 SHEET
FILED: *Mark B. 10/27/71*
OCT. 1971
REFERENCE
F. B. 3266
JOB NUMBER
0047-29

REVISION		
NO.	BY	DATE