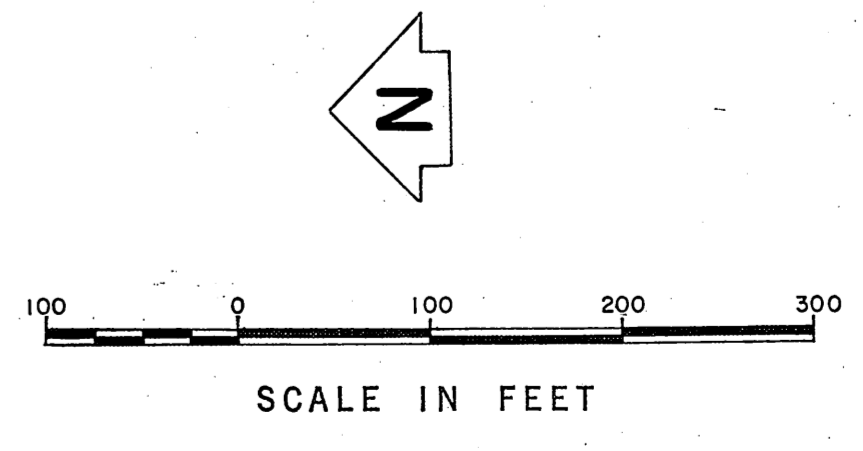
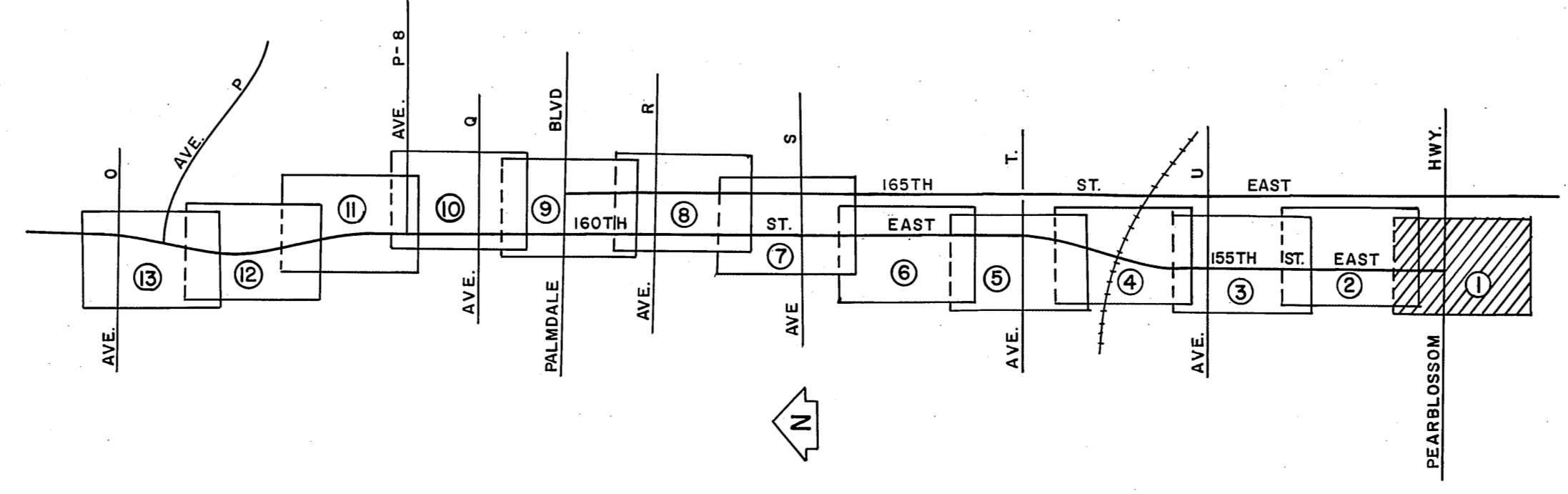
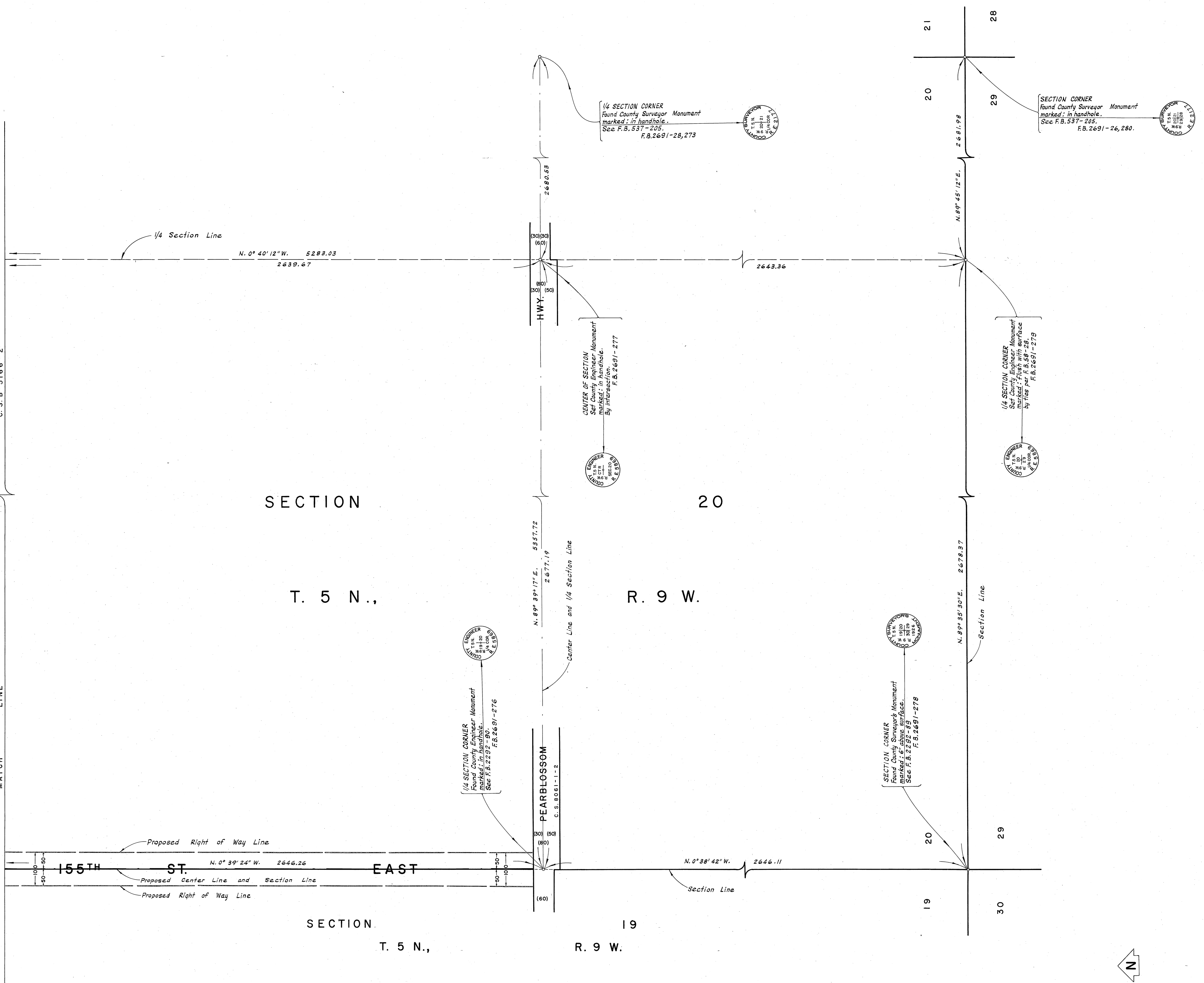
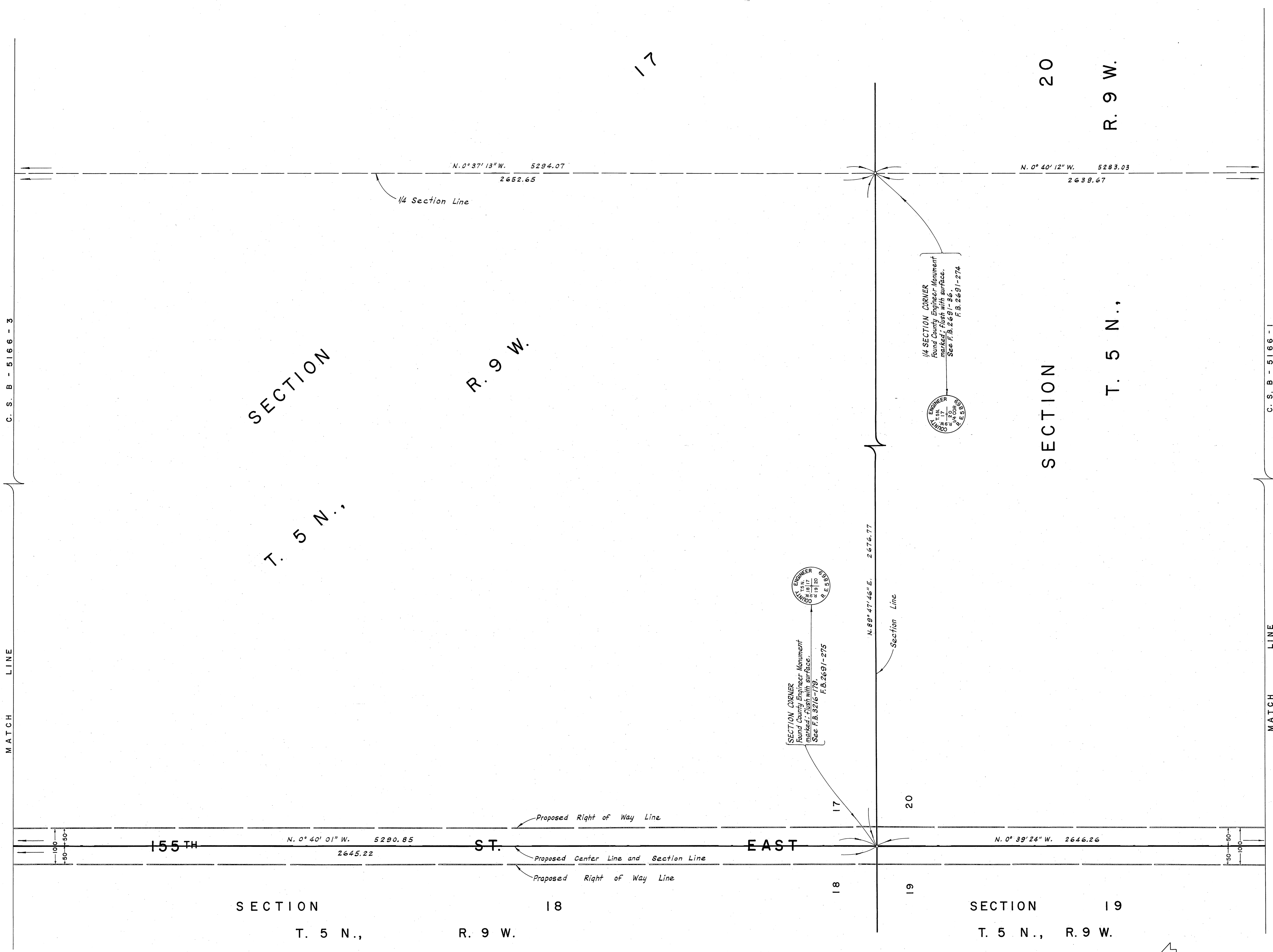


C.S.B-5166-2

MATCH LINE



COUNTY OF LOS ANGELES DEPARTMENT OF COUNTY ENGINEER HARVEY T. BRANDT - COUNTY ENGINEER PREPARED BY SURVEY DIVISION GEORGE J. FRANCESCHINI - DIVISION ENGINEER SURVEYED BY <u>W. J. VOGEL, J. S. COATES</u> CHECKED BY <u>W. A. EDMONDSON</u> DRAWN BY <u>B. H. TABATA</u>	ALIGNMENT MAP OF 155TH STREET EAST - 160TH STREET EAST FROM PEARBLOSSOM HWY. TO AVENUE O		COUNTY SURVEYOR'S MAP NO. B-5166 SHEET 1 OF 13 SHEETS FILED: <u>July 22</u> 19 <u>77</u> <u>W. J. Vogel</u> DEPUTY SURVEYED AUGUST 1969 - JULY 1971	REVISION NO. BY DATE
	BASIS OF BEARINGS THE CENTER LINE OF AVENUE T (N. 89° 38' 50" E.) AS SHOWN ON C.S.B-2978-1.		REFERENCE F. B. 2691 - 219-280 F. B. 1680 - 181-218 JOB NUMBER 0097.70	INDEX MAP NO. 66
			AUGUST 1969 - JULY 1971	
			F. B. 2691 - 219-280 F. B. 1680 - 181-218	



C. S. B - 5166 - 3

C. S. B - 5166 - 1

MATCH LINE

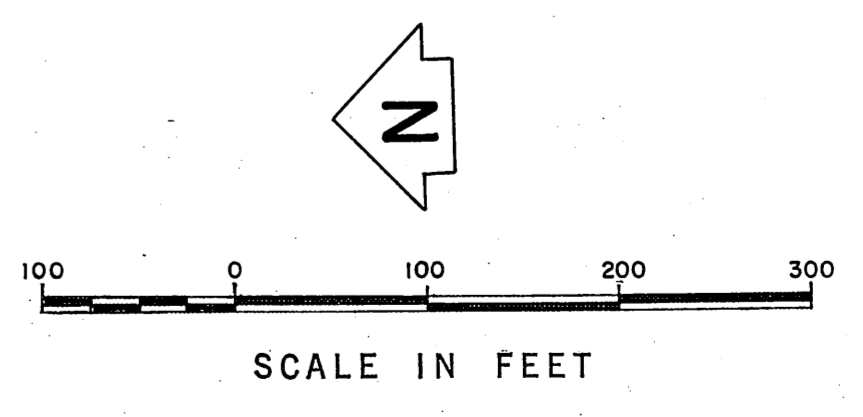
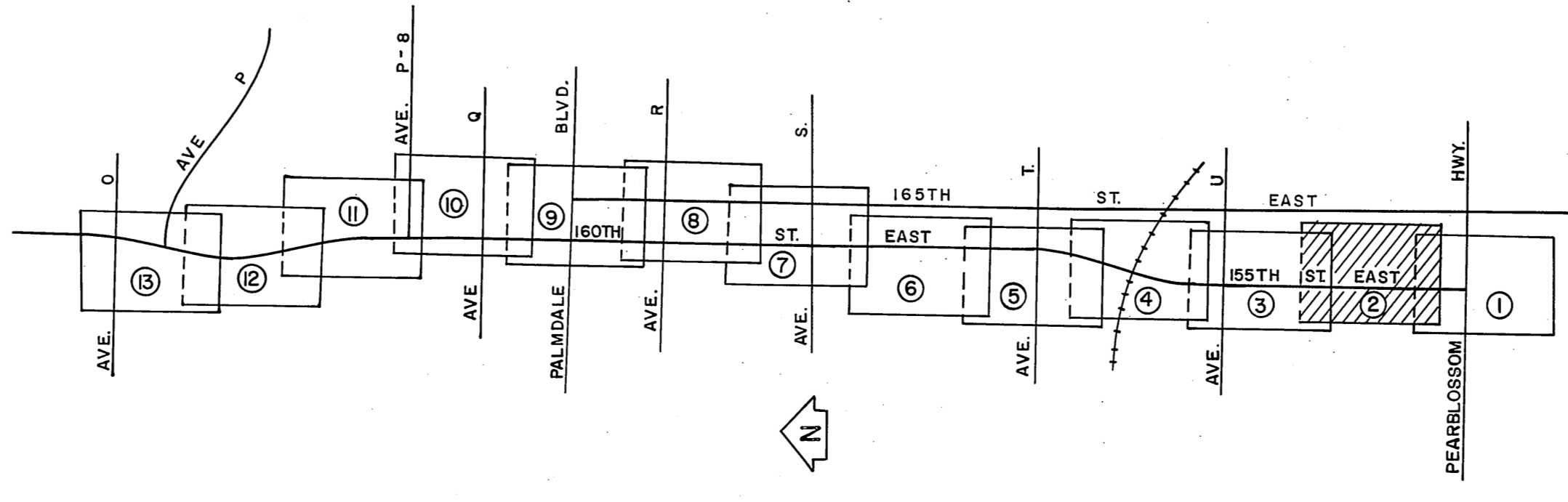
MATCH LINE

SECTION 17
T. 5 N.,
R. 9 W.

SECTION 19
T. 5 N.,
R. 9 W.

SECTION 18
T. 5 N.,
R. 9 W.

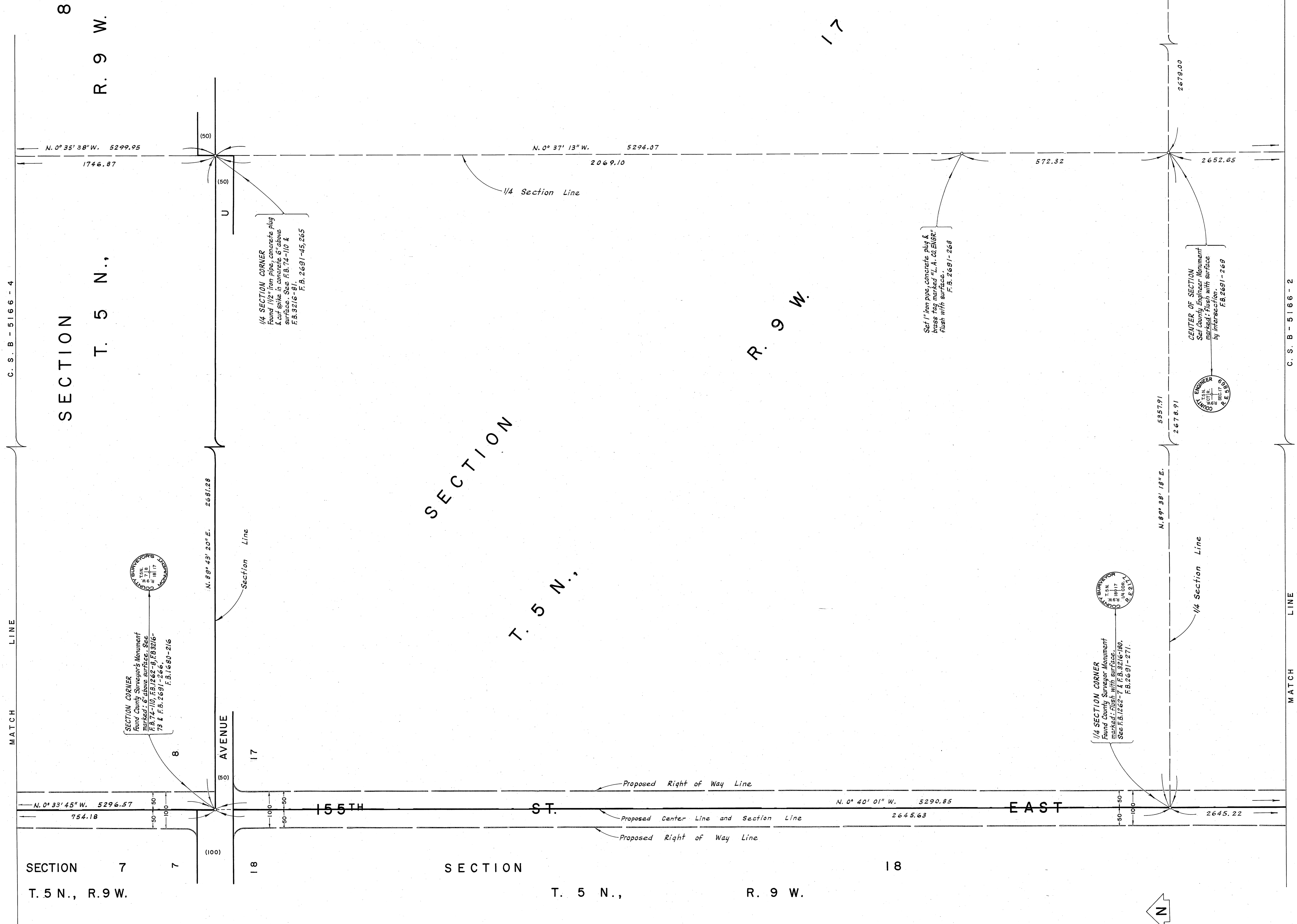
SECTION 20
T. 5 N.,
R. 9 W.



COUNTY OF LOS ANGELES
DEPARTMENT OF
COUNTY ENGINEER
HARVEY T. BRANDT - COUNTY ENGINEER
PREPARED BY
SURVEY DIVISION
GEORGE J. FRANCESCHINI - DIVISION ENGINEER
SURVEYED BY W. J. VOGEL, J. S. COATES
CHECKED BY W. A. EDMONDSON
DRAWN BY B. H. TABATA

ALIGNMENT MAP OF
155TH STREET EAST -
160TH STREET EAST
FROM PEARBLOSSOM HWY. TO AVENUE O
BASIS OF BEARINGS
THE CENTER LINE OF AVENUE T (N. 89° 38' 50" E.)
AS SHOWN ON C. S. B - 2978 - 1.

COUNTY SURVEYOR'S MAP NO. B-5166		REVISION
SHEET 2 OF 13 SHEETS		NO. BY DATE
FILED: <i>[Signature]</i> 1971		
DEPUTY		
SURVEYED		
AUGUST 1969 - JULY 1971		
REFERENCE		
F. B. 2691 - 219-280		
F. B. 1680 - 181-218		
JOB NUMBER	INDEX MAP NO.	
0097.70	66	



C. S. B - 5166 - 4

MATCH LINE

MATCH LINE

C. S. B - 5166 - 2

MATCH LINE

SECTION 8
T. 5 N.,
R. 9 W.

SECTION 7
T. 5 N., R. 9 W.

SECTION
T. 5 N.,
R. 9 W.

SECTION 18
T. 5 N.,
R. 9 W.

1/4 SECTION CORNER
Found 2" iron pipe with concrete
plug & cut spike in concrete
13" below surface. See F.B. 74-104,
F.B. 2691-38, 27 D

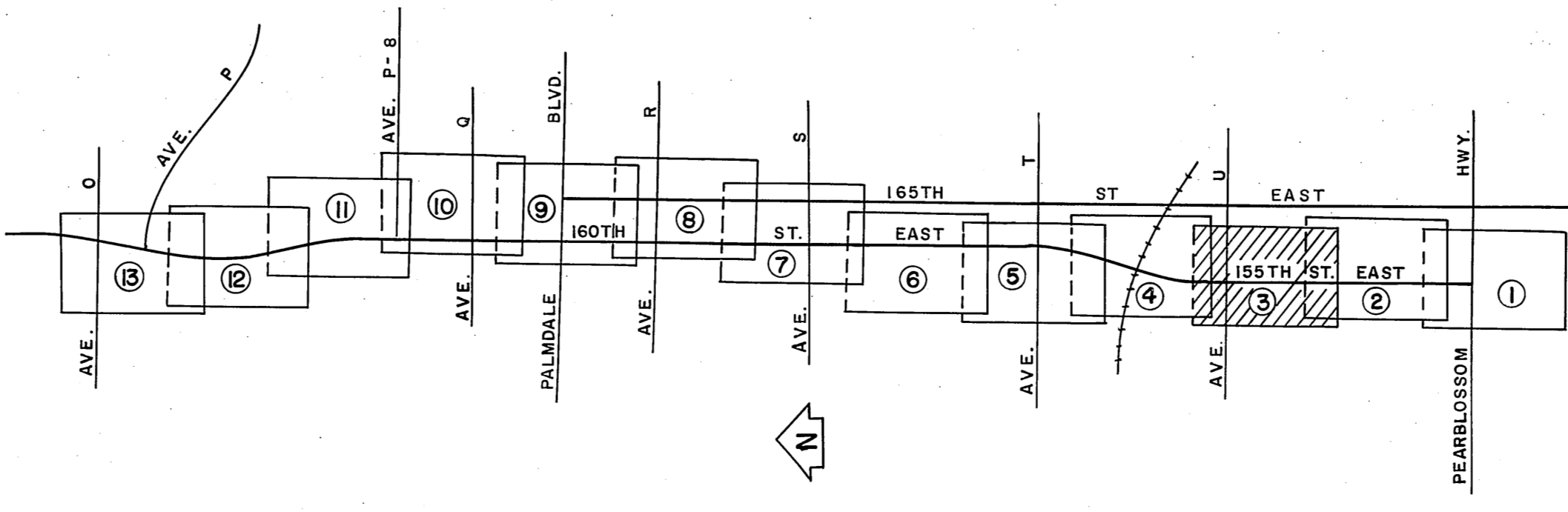
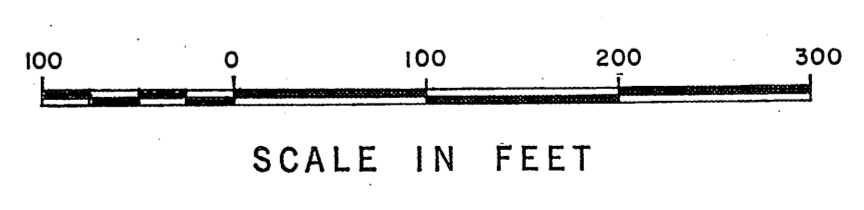
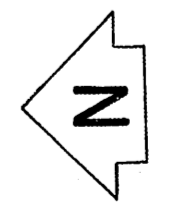
1/4 SECTION CORNER
Found 1/2" iron pipe, concrete plug
& cut spike in concrete, 6" above
surface. See F.B. 74-104 &
F.B. 3216-81, F.B. 2691-45, 265

Set 1" iron pipe, concrete plug &
passing marker L.A. collar
flush with surface.
F.B. 2691-268

CENTER OF SECTION
Set County Engineer Monument
marked: flush with surface
by intersection.
F.B. 2691-269

SECTION CORNER
Found County Surveyor's Monument
marked: 6" above surface. See
F.B. 74-100, F.B. 1262-9, F.B. 3216-
73 & F.B. 2691-266,
F.B. 1680-216

1/4 SECTION CORNER
Found County Surveyor's Monument
marked: flush with surface.
See F.B. 1262-4 & F.B. 3216-100,
F.B. 2691-271.

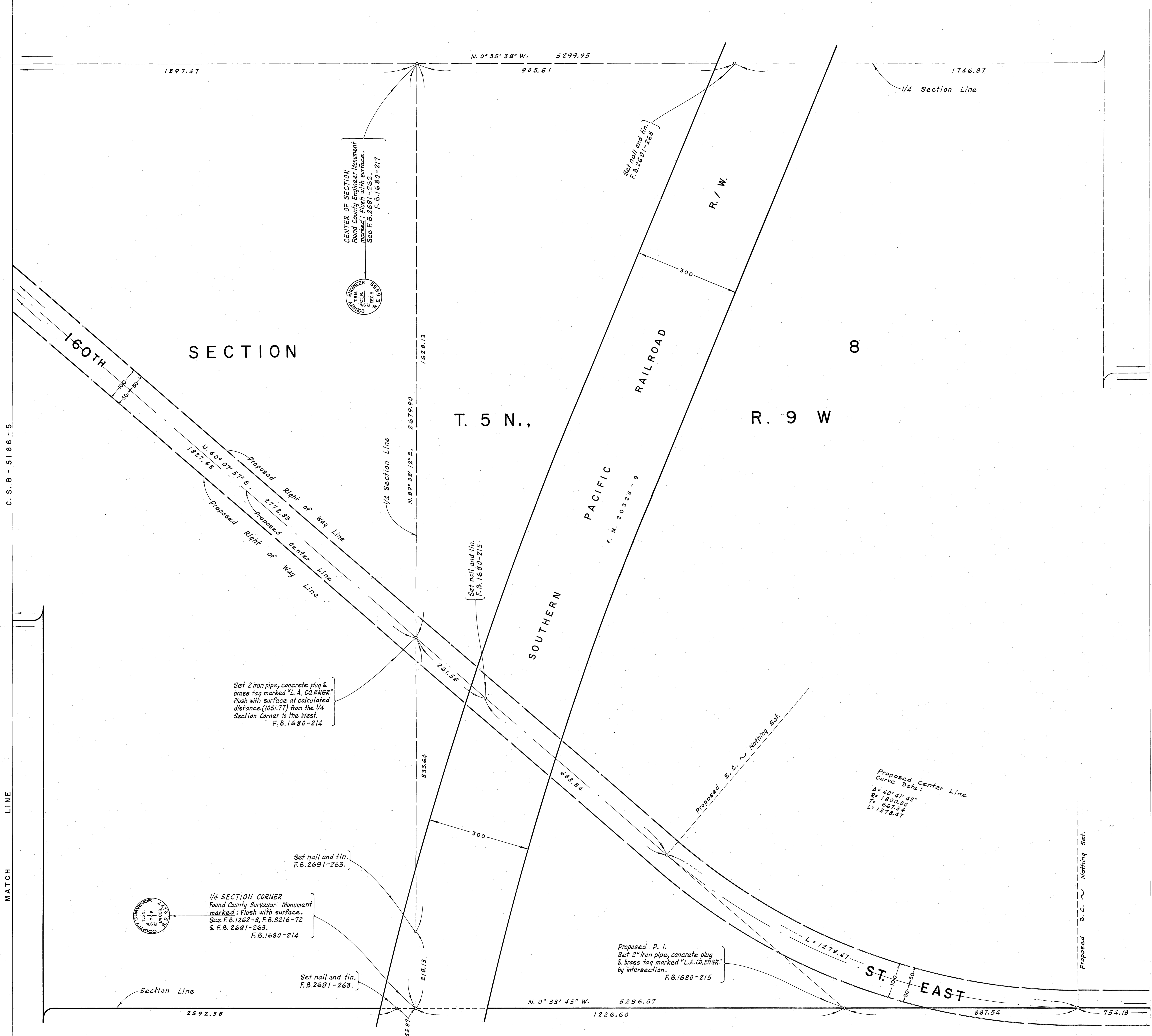


VICINITY MAP
NOT TO SCALE

COUNTY OF LOS ANGELES
DEPARTMENT OF
COUNTY ENGINEER
HARVEY T. BRANDT - COUNTY ENGINEER
PREPARED BY
SURVEY DIVISION
GEORGE J. FRANCESCHINI - DIVISION ENGINEER
SURVEYED BY W. J. VOGEL, J. S. COATES
CHECKED BY W. A. EDMONDSON
DRAWN BY B. H. TABATA

ALIGNMENT MAP OF
**155TH STREET EAST -
160TH STREET EAST**
FROM PEARBLOSSOM HWY. TO AVENUE O
BASIS OF BEARINGS
THE CENTER LINE OF AVENUE T (N. 89° 38' 50" E.)
AS SHOWN ON C. S. B - 2978 - 1.

COUNTY SURVEYOR'S MAP NO. B-5166		REVISION	
SHEET 3 OF 13 SHEETS		NO.	DATE
FILED: <i>[Signature]</i> 1972		BY	DATE
AUGUST 1969 - JULY 1971			
F. B. 2691 - 219-280			
F. B. 1680 - 181-218			
JOB NUMBER 0097.70		INDEX MAP NO.	
		66	



C.S.B-5166-5

C.S.B-5166-3

MATCH LINE

MATCH LINE

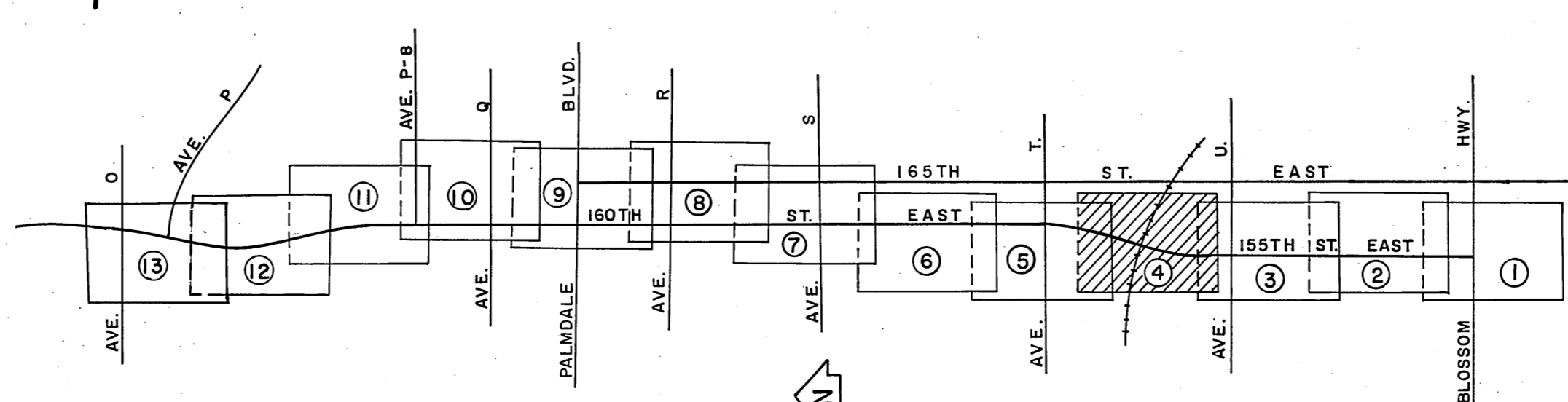
SECTION

SECTION T. 5 N., R. 9 W.

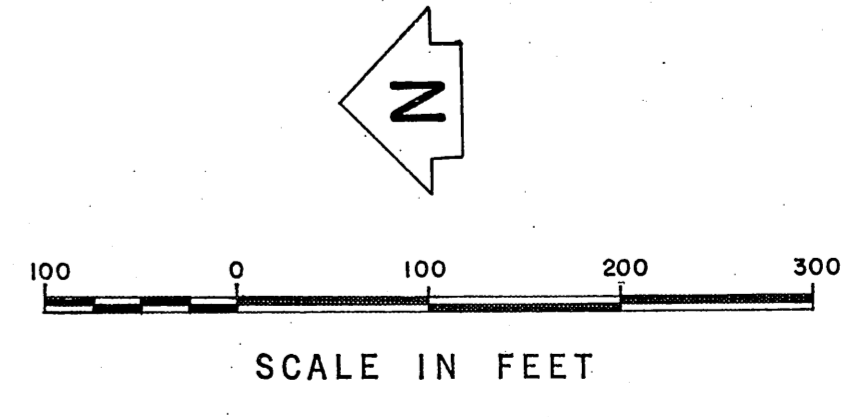
T. 5 N., R. 9 W.

T. 5 N., R. 9 W.

7



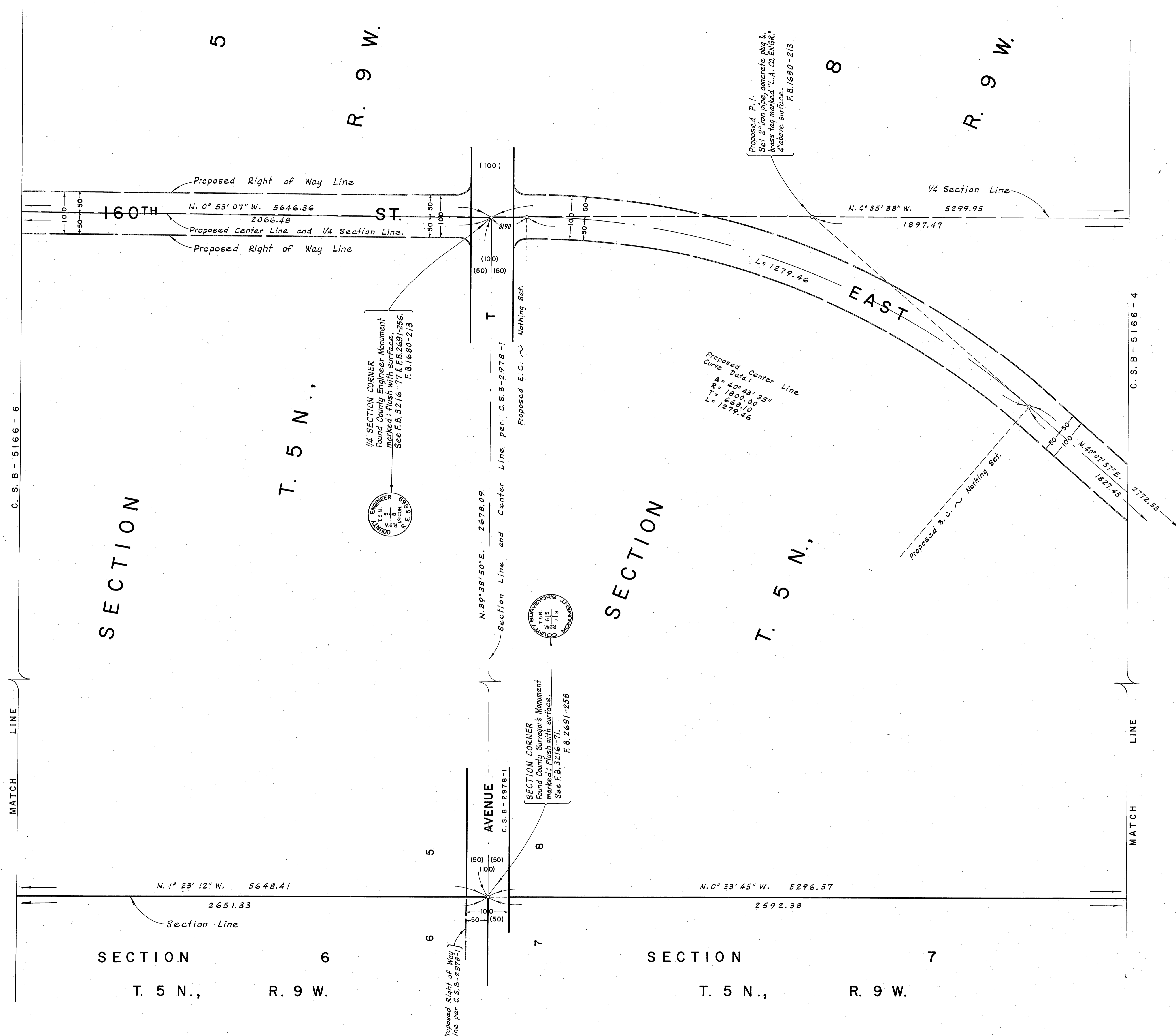
VICINITY MAP NOT TO SCALE



COUNTY OF LOS ANGELES
 DEPARTMENT OF
 COUNTY ENGINEER
 HARVEY T. BRANDT - COUNTY ENGINEER
 PREPARED BY
 SURVEY DIVISION
 GEORGE J. FRANCESCHINI - DIVISION ENGINEER
 SURVEYED BY W.J. VOGEL, J.S. COATES
 CHECKED BY W. A. EDMONDSON
 DRAWN BY B. H. TABATA

ALIGNMENT MAP OF
**155TH STREET EAST -
 160TH STREET EAST**
 FROM PEARBLOSSOM HWY. TO AVENUE O
 BASIS OF BEARINGS
 THE CENTER LINE OF AVENUE T (N. 89° 38' 50" E.)
 AS SHOWN ON C.S.B-2978-1.

COUNTY SURVEYOR'S MAP NO. B-5166		REVISION
SHEET 4 OF 13 SHEETS		NO. BY DATE
FILED: <i>[Signature]</i> 1977		
DEPUTY		
SURVEYED		
AUGUST 1969 - JULY 1971		
REFERENCE		
F. B. 2691 - 219-280		
F. B. 1680 - 181-218		
JOB NUMBER	INDEX MAP NO.	
0097.70	66	



C. S. B - 5166 - 6

C. S. B - 5166 - 4

SECTION

SECTION

SECTION 6
T. 5 N., R. 9 W.

SECTION 7
T. 5 N., R. 9 W.

T. 5 N.,

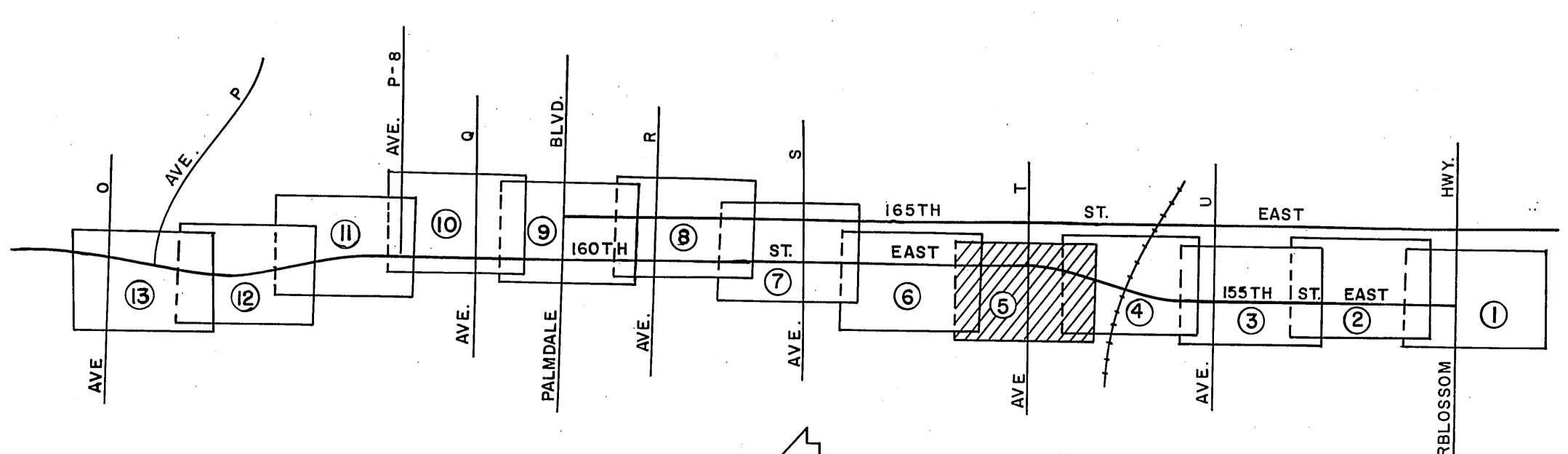
T. 5 N.,

R. 9 W.

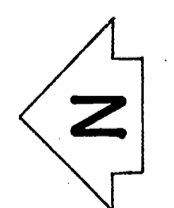
R. 9 W.

MATCH LINE

MATCH LINE

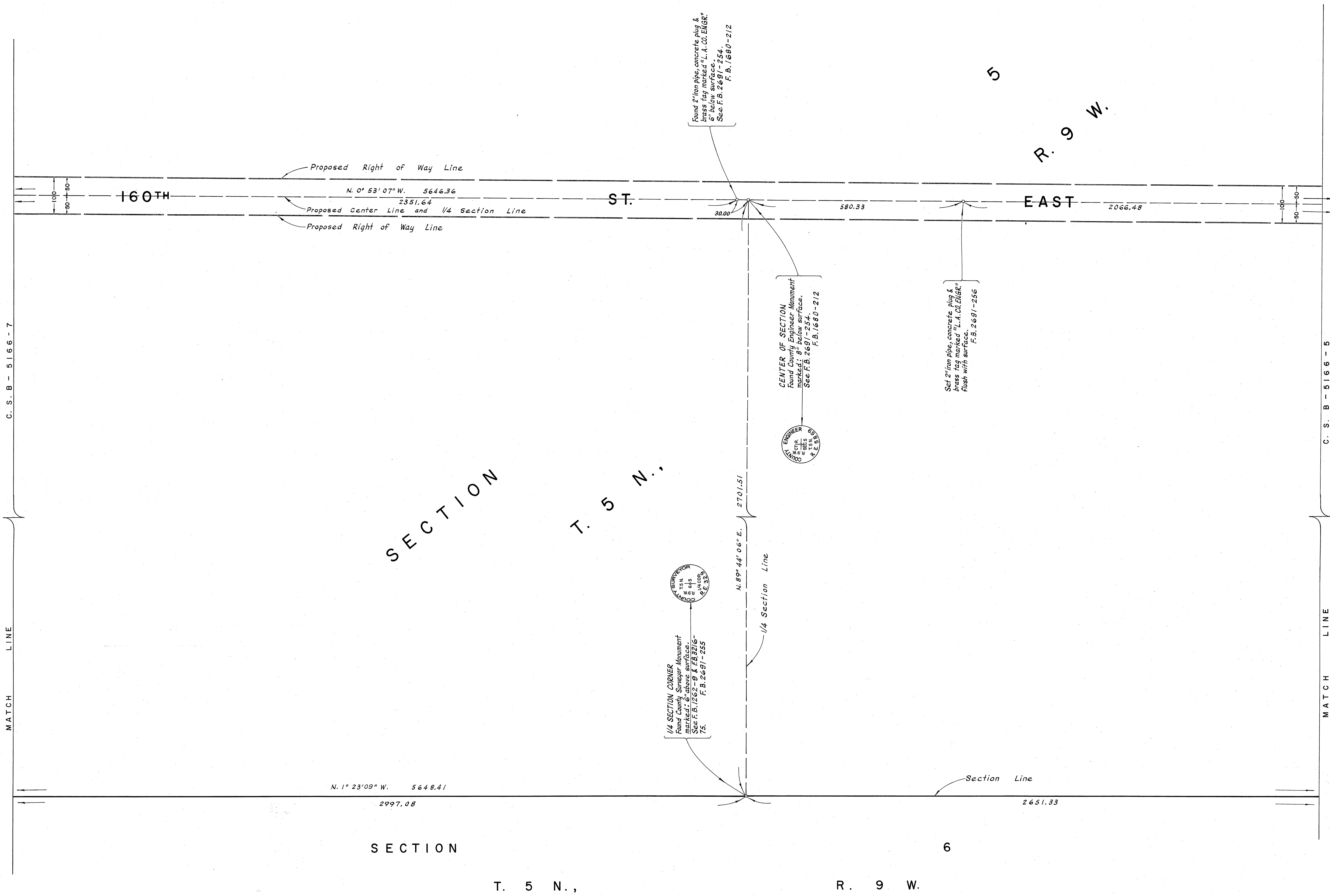


VICINITY MAP
NOT TO SCALE



SCALE IN FEET

COUNTY OF LOS ANGELES DEPARTMENT OF COUNTY ENGINEER HARVEY T. BRANDT - COUNTY ENGINEER PREPARED BY SURVEY DIVISION GEORGE J. FRANCESCHINI - DIVISION ENGINEER SURVEYED BY W. A. VOSE, J. S. COATES CHECKED BY W. A. EDMONDSON DRAWN BY B. H. TABATA	ALIGNMENT MAP OF 155TH STREET EAST - 160TH STREET EAST FROM PEARBLOSSOM HWY. TO AVENUE O BASIS OF BEARINGS THE CENTER LINE OF AVENUE T (N. 89° 38' 50" E.) AS SHOWN ON C. S. B - 2978 - I.		COUNTY SURVEYOR'S MAP NO. B-5166 SHEET 5 OF 13 SHEETS FILED: <i>June 22, 1972</i> DEPUTY SURVEYED AUGUST 1969 - JULY 1971 REFERENCE F. B. 2691 - 219 - 280 F. B. 1680 - 181 - 218 JOB NUMBER 0097.70	REVISION NO. BY DATE _____ _____ _____

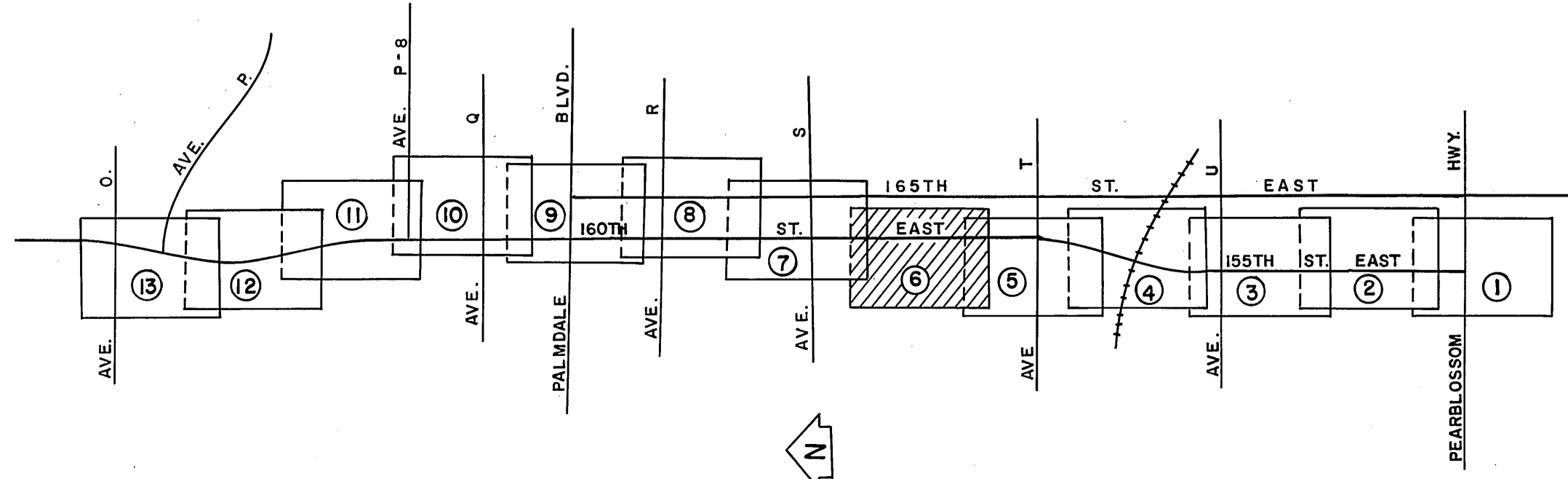


C.S.B-5166-7

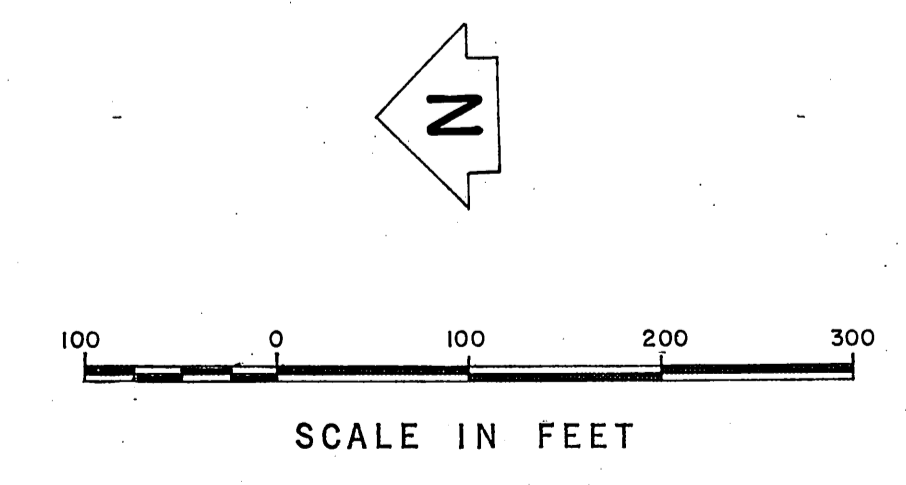
C.S.B-5166-5

MATCH LINE

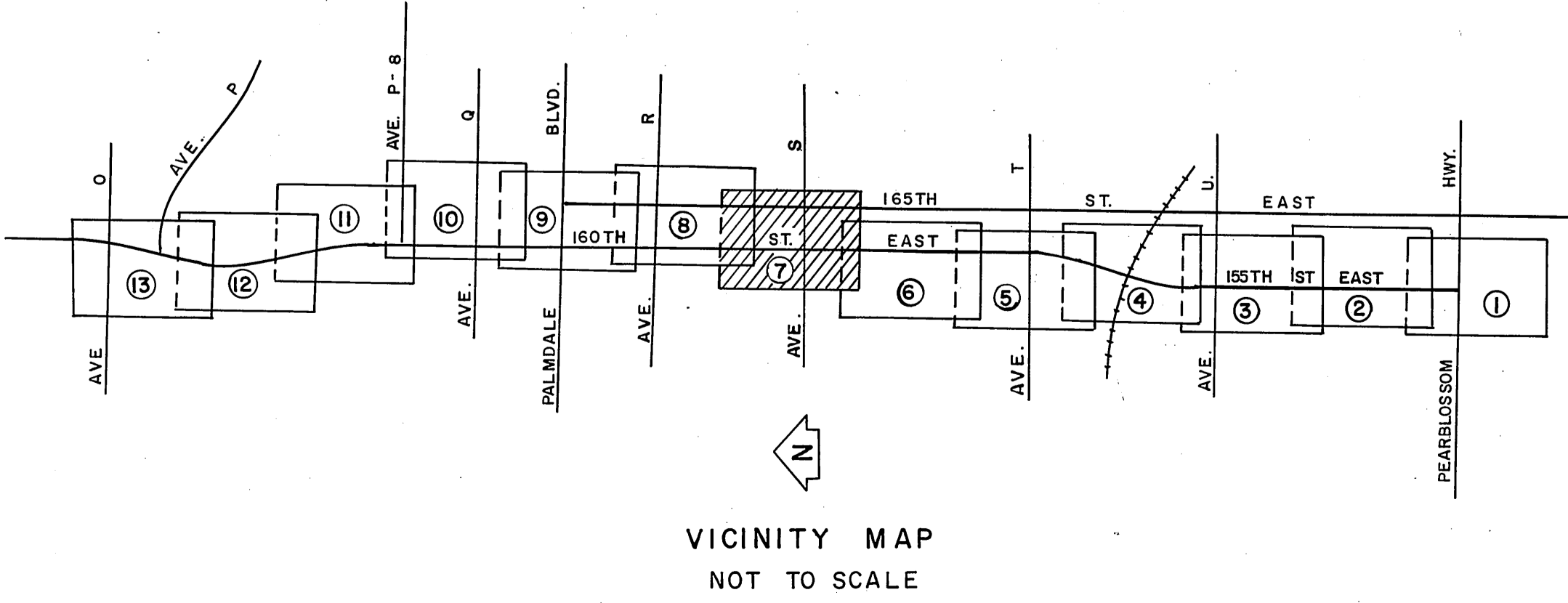
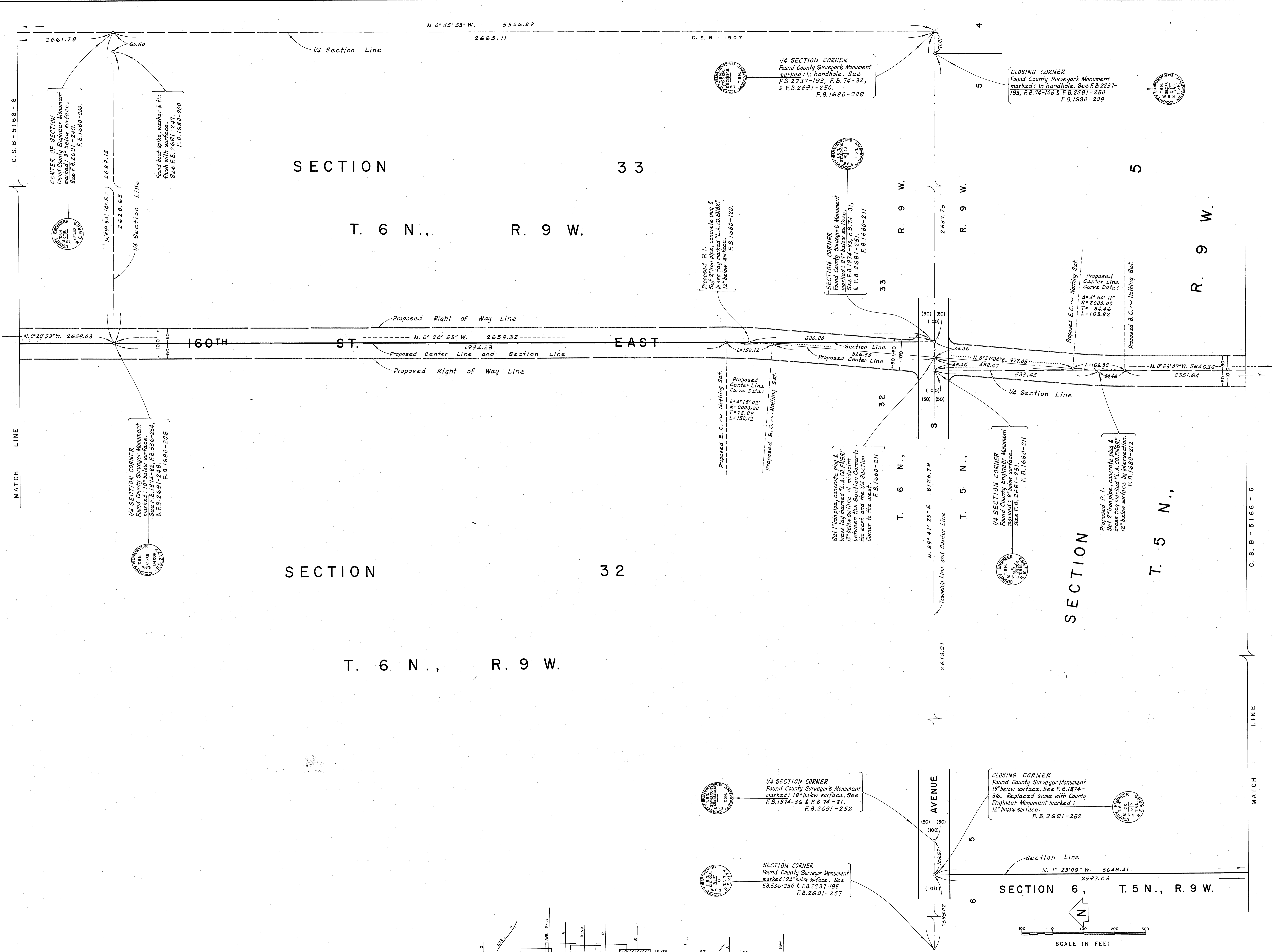
MATCH LINE



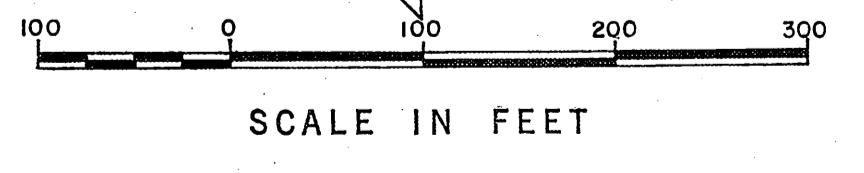
VICINITY MAP NOT TO SCALE



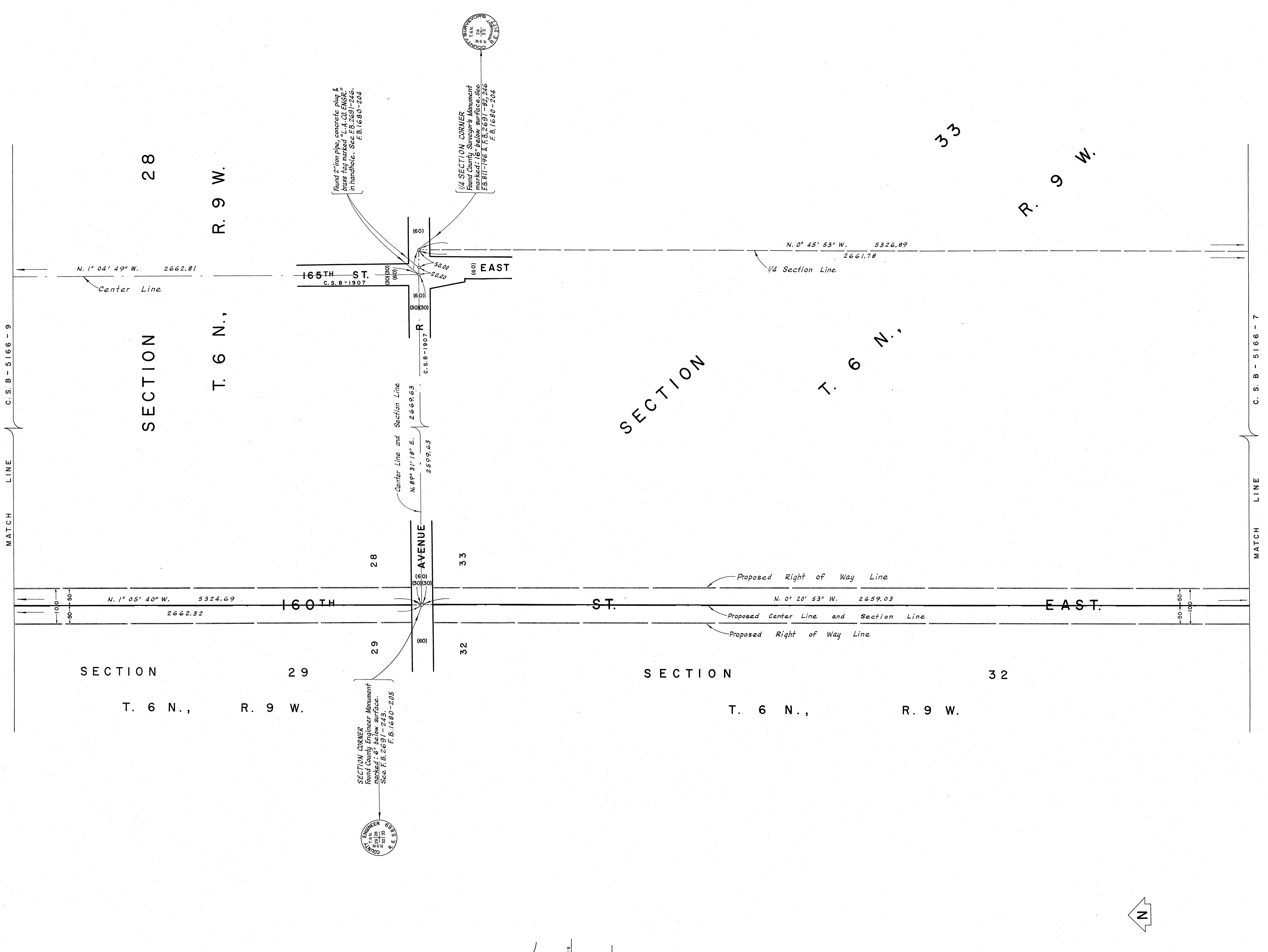
COUNTY OF LOS ANGELES DEPARTMENT OF COUNTY ENGINEER HARVEY T. BRANDT - COUNTY ENGINEER PREPARED BY SURVEY DIVISION GEORGE J. FRANCESCHINI - DIVISION ENGINEER SURVEYED BY W. J. VOGE, J. S. COATES CHECKED BY W. A. EDMONDSON DRAWN BY B. H. TABATA	ALIGNMENT MAP OF 155TH STREET EAST - 160TH STREET EAST FROM PEARBLOSSOM HWY. TO AVENUE O		COUNTY SURVEYOR'S MAP NO. B-5166 SHEET 6 OF 13 SHEETS FILED: <i>W. J. Vo</i> , 1971 <i>B. H. Tabata</i> DEPUTY SURVEYED AUGUST 1969 - JULY 1971	REVISION NO. BY DATE
	BASIS OF BEARINGS THE CENTER LINE OF AVENUE T (N. 89° 38' 50" E.) AS SHOWN ON C.S.B-2978-1.		F. B. 2691 - 219-280 F. B. 1680 - 181-218 JOB NUMBER 0097.70	INDEX MAP NO. 66
			REFERENCE F. B. 2691 - 219-280 F. B. 1680 - 181-218	
			JOB NUMBER 0097.70	INDEX MAP NO. 66



VICINITY MAP NOT TO SCALE



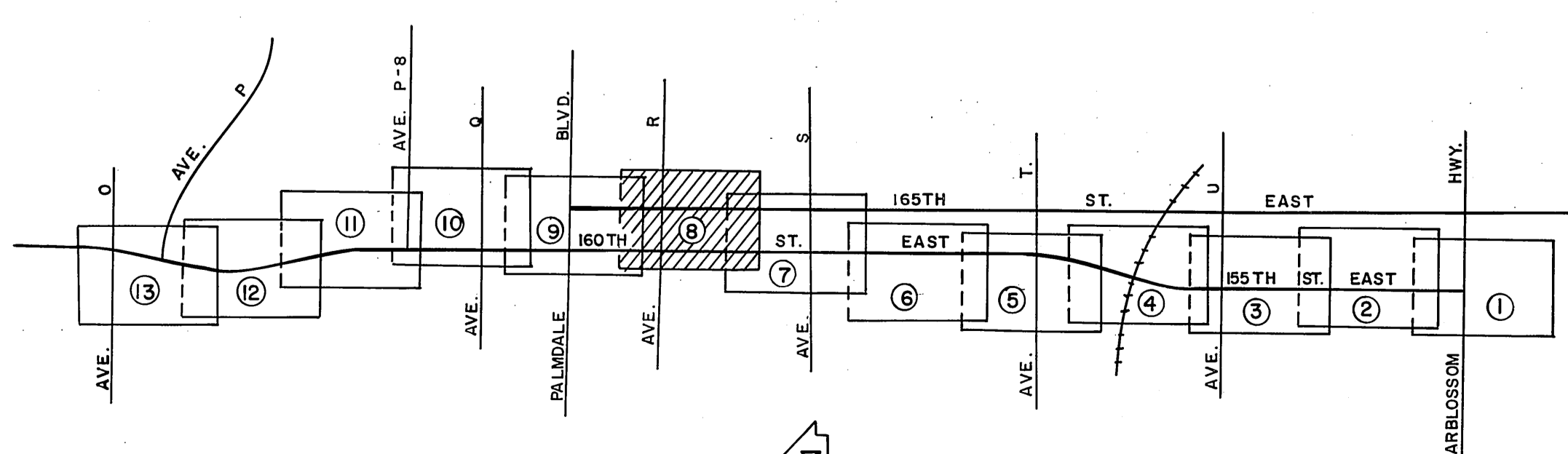
COUNTY OF LOS ANGELES DEPARTMENT OF COUNTY ENGINEER HARVEY T. BRANDT - COUNTY ENGINEER PREPARED BY SURVEY DIVISION GEORGE J. FRANCESCINI - DIVISION ENGINEER SURVEYED BY W. J. VOGEL, J. S. COATES CHECKED BY W. A. EDMONDSON DRAWN BY B. H. TABATA	ALIGNMENT MAP OF 155TH STREET EAST - 160TH STREET EAST FROM PEARBLOSSOM HWY. TO AVENUE 0		COUNTY SURVEYOR'S MAP NO. B-5166 SHEET 7 OF 13 SHEETS FILED: <i>[Signature]</i> 19 22 DEPUTY AUGUST 1969 - JULY 1971	REVISION NO. BY DATE
	BASIS OF BEARINGS THE CENTER LINE OF AVENUE T (N. 89° 38' 50"E.) AS SHOWN ON C. S. B - 2978 - 1.		F. B. 2691 - 219 - 280 F. B. 1680 - 181 - 218 JOB NUMBER 0097.70	INDEX MAP NO. 66
			SCALE IN FEET 0 100 200 300	



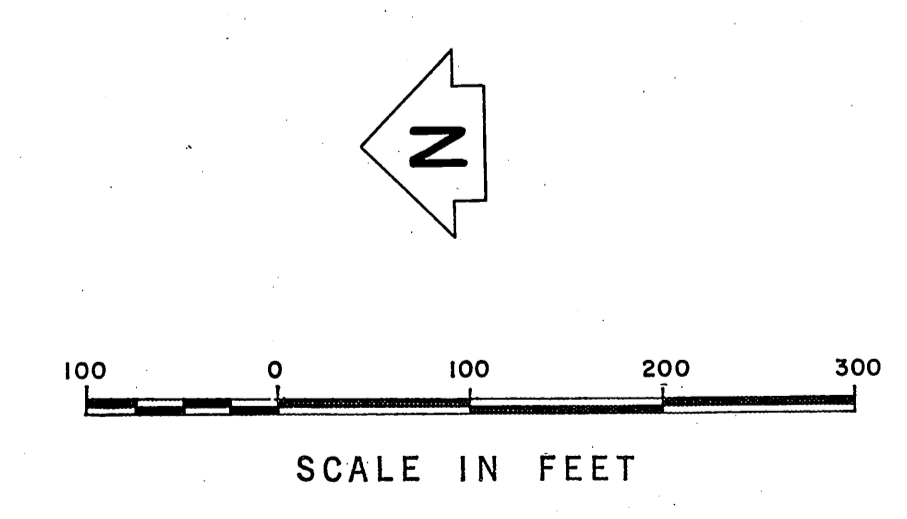
SECTION CORNER
 Found County Engineer Monument
 marked: 5' below surface.
 See F.B. 2691-243.
 F.B. 1690-205

Found 2" iron pipe, concrete plug &
 brass cap marked "L.A. CO. ENGR." in
 handle. See F.B. 2691-246.
 F.B. 1680-204

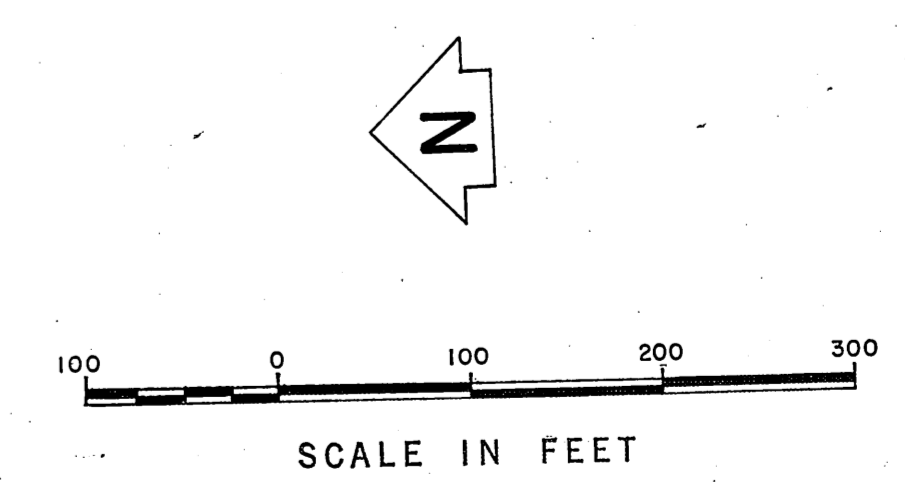
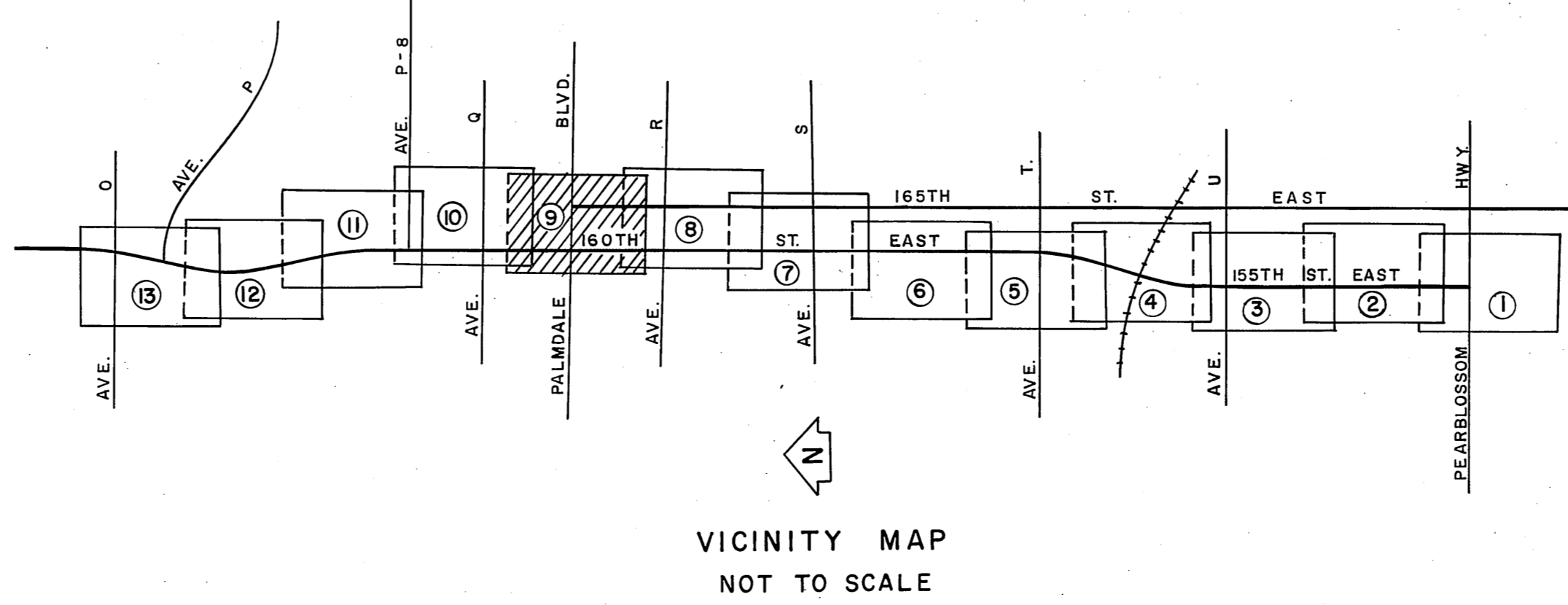
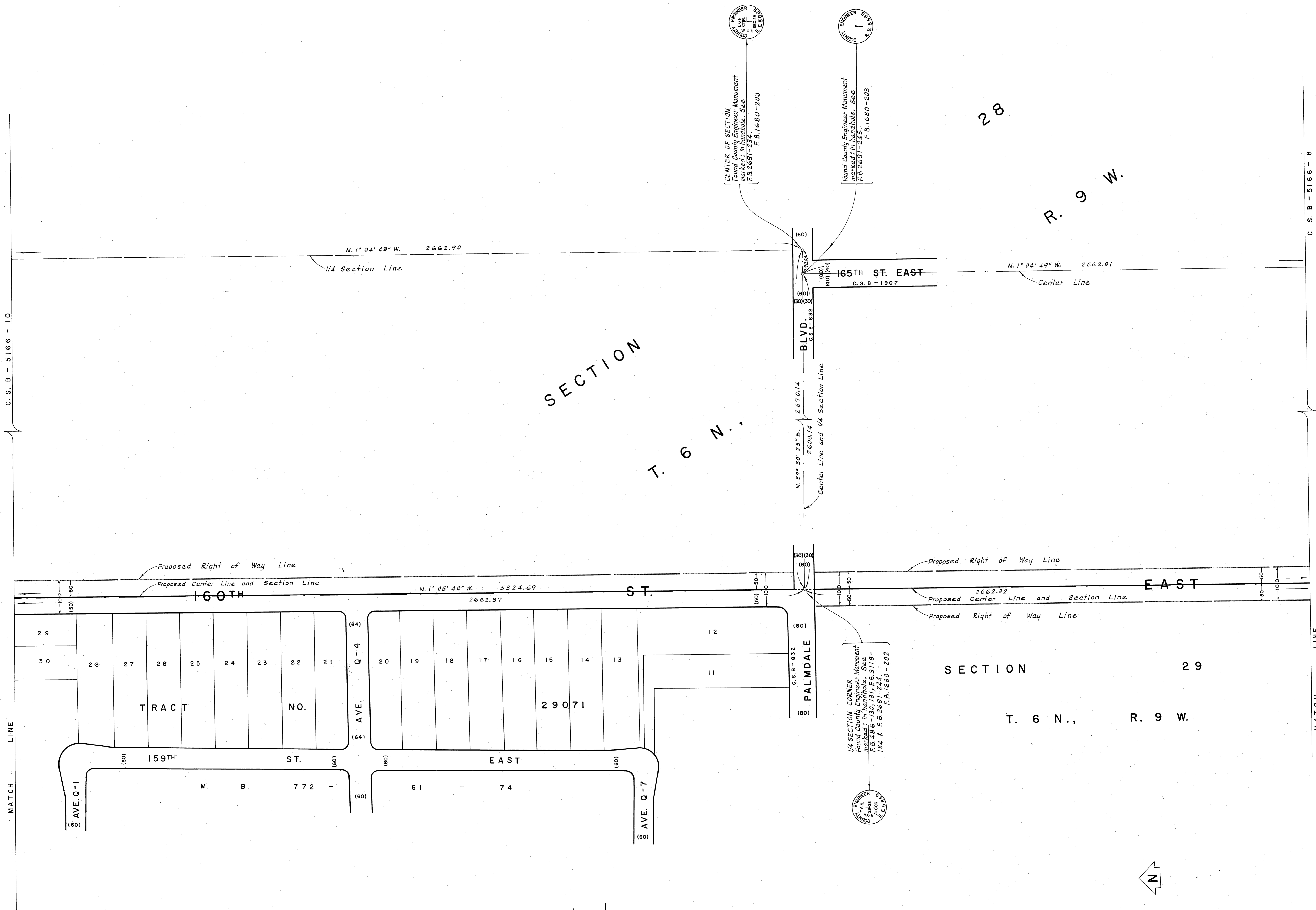
1/4 SECTION CORNER
 Found County Surveyor's Monument
 marked: 16' below surface. See
 F.B. 811-196 & F.B. 2691-246
 F.B. 1680-204



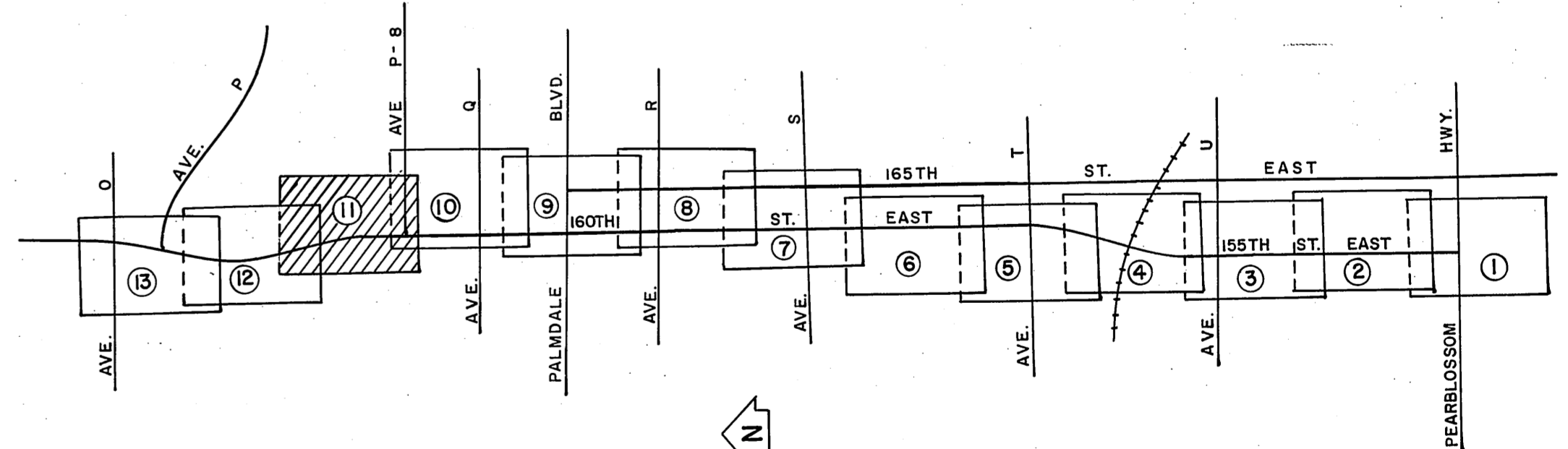
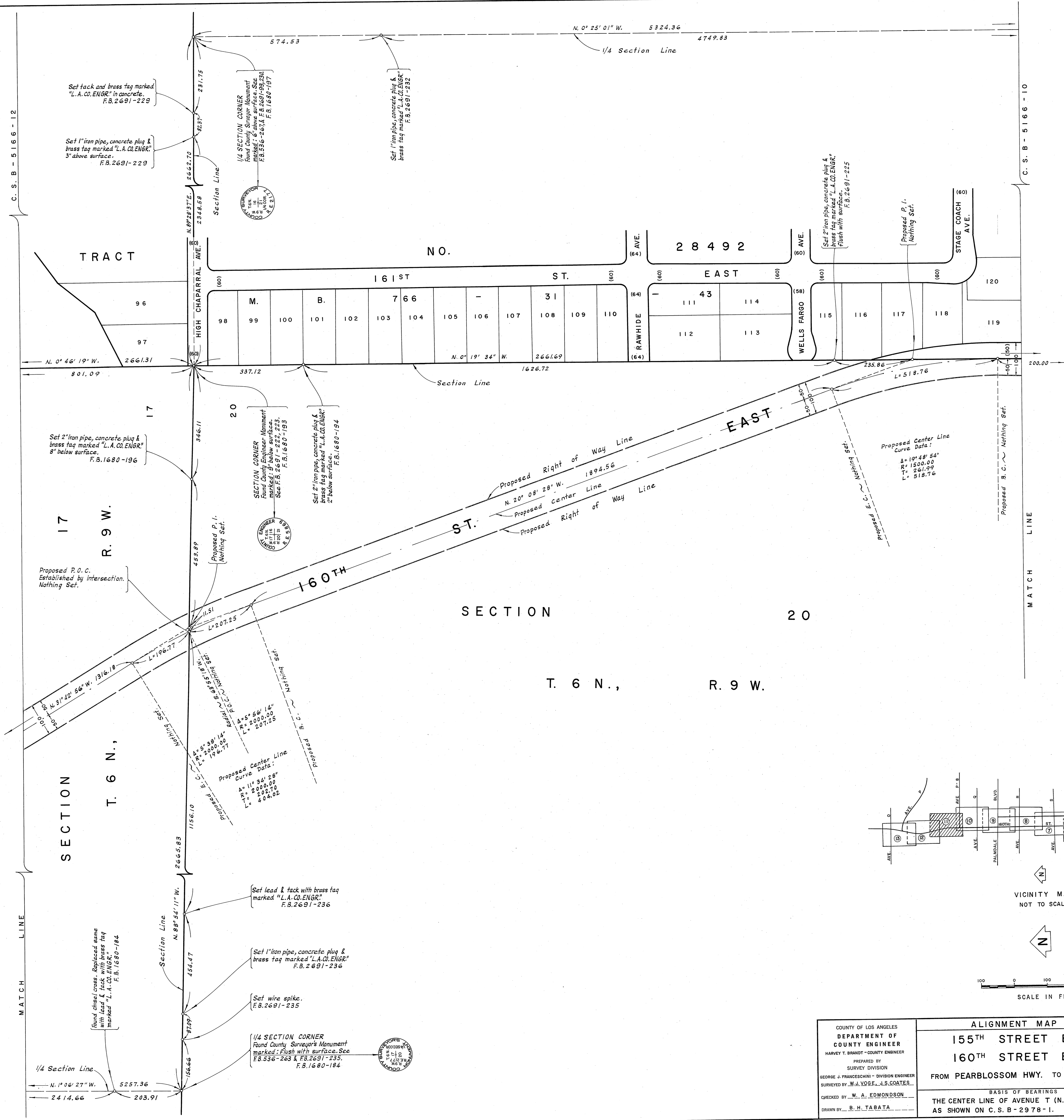
VICINITY MAP
 NOT TO SCALE



COUNTY OF LOS ANGELES DEPARTMENT OF COUNTY ENGINEER HARVEY T. BRANDT - COUNTY ENGINEER PREPARED BY SURVEY DIVISION GEORGE J. FRANCESCINI - DIVISION ENGINEER SURVEYED BY W. J. VOGE, J. S. COATES CHECKED BY W. A. EDMONDSON DRAWN BY B. H. TABATA	ALIGNMENT MAP OF 155TH STREET EAST - 160TH STREET EAST FROM PEARBLOSSOM HWY. TO AVENUE O AS SHOWN ON C. S. B - 2978 - 1.		COUNTY SURVEYOR'S MAP NO. B-5166 SHEET 8 OF 13 SHEETS FILED: <i>[Signature]</i> 1972 DEPUTY SURVEYED AUGUST 1969 - JULY 1971 REFERENCE F. B. 2691 - 219-280 F. B. 1680 - 181-218 JOB NUMBER 0097.70 INDEX MAP NO. 66	REVISION NO. BY DATE



COUNTY OF LOS ANGELES DEPARTMENT OF COUNTY ENGINEER HARVEY T. BRANDT - COUNTY ENGINEER PREPARED BY SURVEY DIVISION GEORGE J. FRANCESCHINI - DIVISION ENGINEER SURVEYED BY W. J. VOGEL, J. S. COATES CHECKED BY W. A. EDMONDSON DRAWN BY B. H. TABATA	ALIGNMENT MAP OF 155TH STREET EAST - 160TH STREET EAST FROM PEARBLOSSOM HWY. TO AVENUE O		COUNTY SURVEYOR'S MAP NO. B-5166 SHEET 9 OF 13 SHEETS FILED: <i>June 22, 1971</i> <i>R. H. Smith</i> DEPUTY	REVISION NO. BY DATE
	BASIS OF BEARINGS THE CENTER LINE OF AVENUE T (N. 89° 38' 50" E.) AS SHOWN ON C.S.B-2978-1.		SURVEYED AUGUST 1969 - JULY 1971 REFERENCE F. B. 2691-219-280 F. B. 1680-181-218 JOB NUMBER 0097.70 INDEX MAP NO. 66	

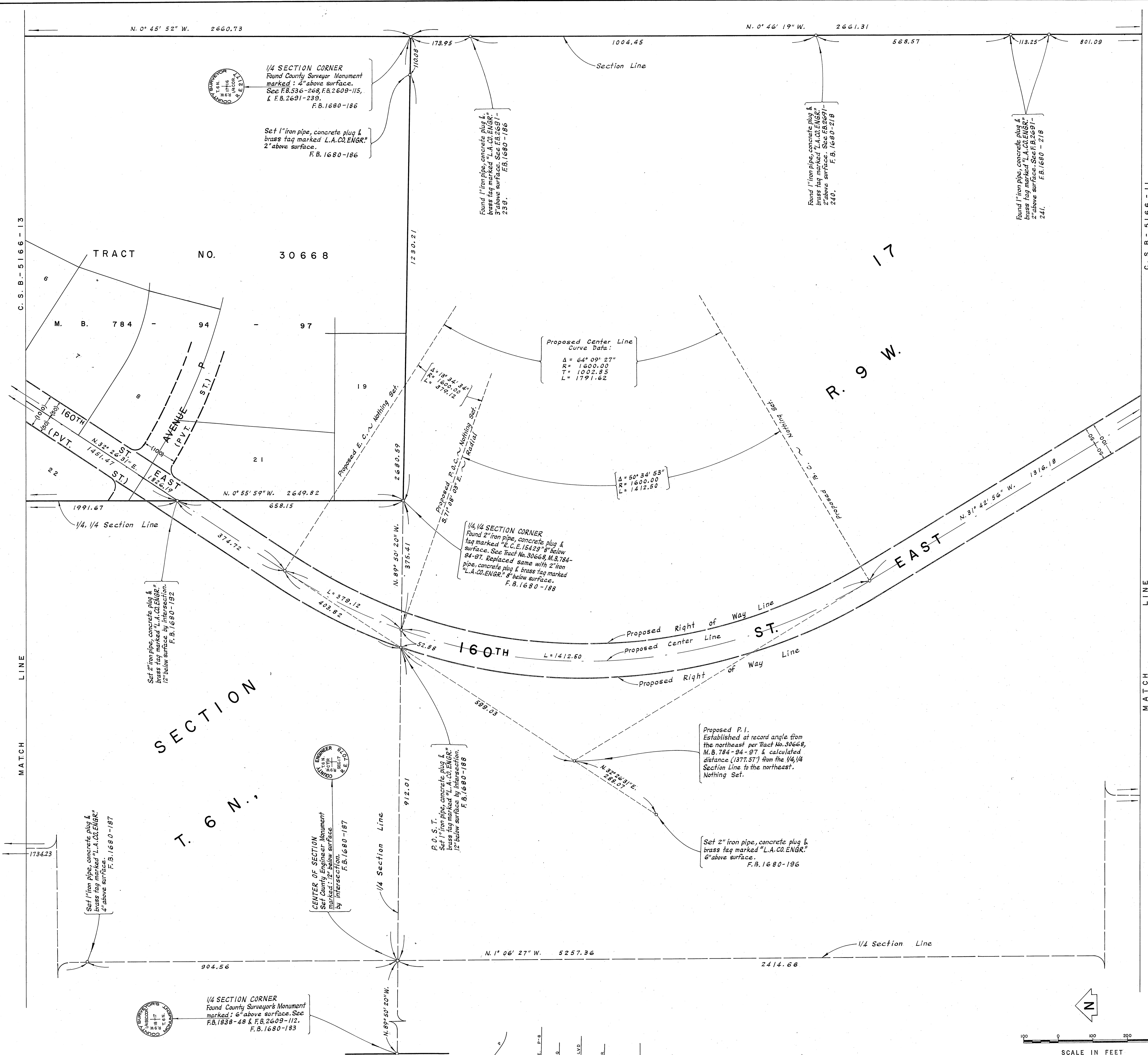


VICINITY MAP
NOT TO SCALE

SCALE IN FEET

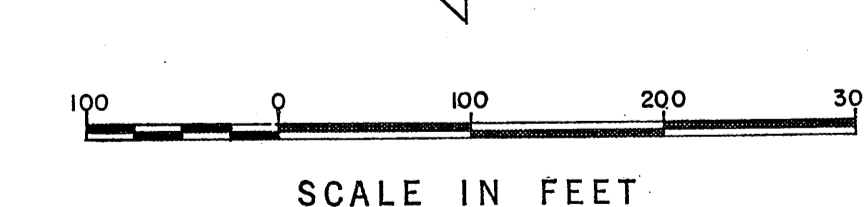
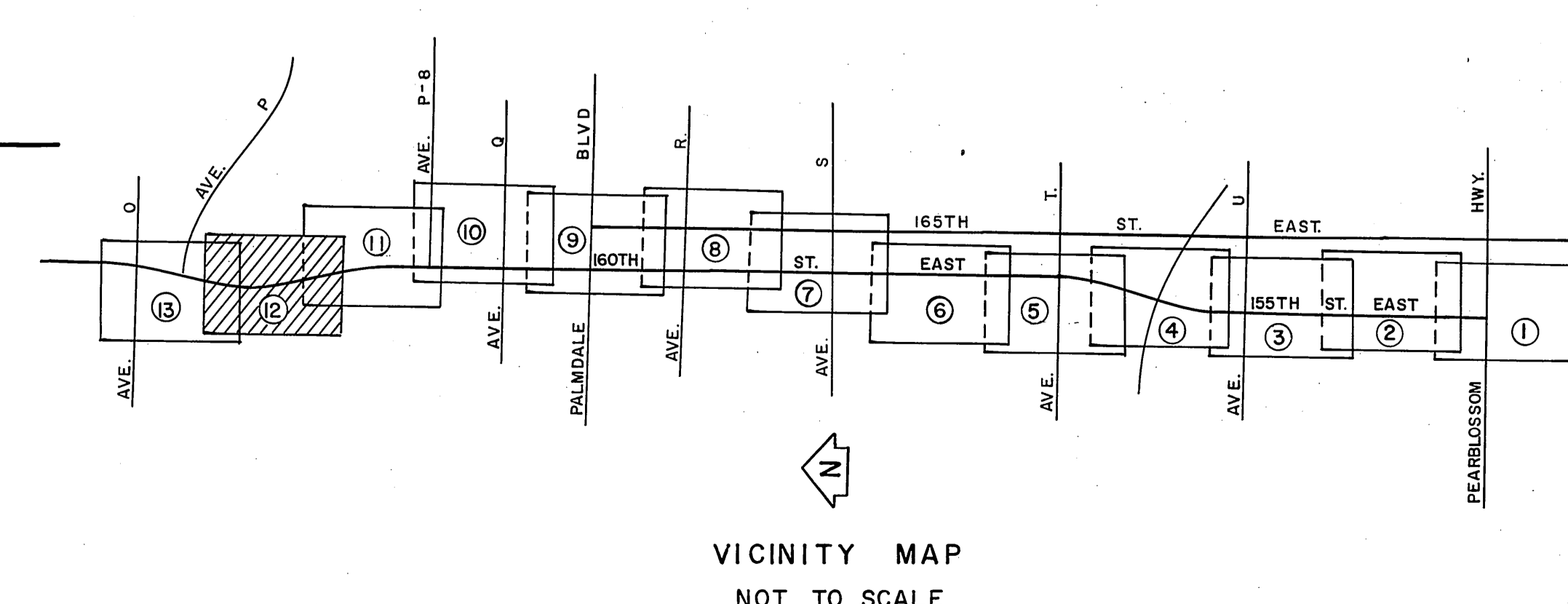
0 100 200 300

COUNTY OF LOS ANGELES DEPARTMENT OF COUNTY ENGINEER HARVEY T. BRANDT - COUNTY ENGINEER PREPARED BY SURVEY DIVISION GEORGE J. FRANCISCHINI - DIVISION ENGINEER SURVEYED BY W. J. YODGE, J. S. COATES DEPUTY CHECKED BY W. A. EDMONDSON DRAWN BY B. H. TABATA	ALIGNMENT MAP OF 155TH STREET EAST - 160TH STREET EAST FROM PEARBLOSSOM HWY. TO AVENUE O		COUNTY SURVEYOR'S MAP NO. B-5166 SHEET 11 OF 13 SHEETS FILED: <i>June 22, 1972</i> <i>R. J. Smith</i> DEPUTY SURVEYED AUGUST 1969 - JULY 1971
	BASIS OF BEARINGS THE CENTER LINE OF AVENUE T (N. 89° 38' 50" E.) AS SHOWN ON C. S. B - 2978 - 1.		REFERENCE F. B. 2691 - 219 - 280 F. B. 1680 - 181 - 218 JOB NUMBER 0097.70 INDEX MAP NO. 66
			REVISION NO. BY DATE



MATCH LINE

MATCH LINE



COUNTY OF LOS ANGELES DEPARTMENT OF COUNTY ENGINEER HARVEY T. BRANDT - COUNTY ENGINEER PREPARED BY SURVEY DIVISION GEORGE J. FRANCISCHINI - DIVISION ENGINEER SURVEYED BY W.J. VOGEL, J.S. COATES CHECKED BY W.A. EDMONDSON DRAWN BY B.H. TABATA	ALIGNMENT MAP OF 155TH STREET EAST - 160TH STREET EAST FROM PEARBLOSSOM HWY. TO AVENUE O		COUNTY SURVEYOR'S MAP NO. B-5166 SHEET 12 OF 13 SHEETS FILED: <i>Jones</i> <i>1977</i> DEPUTY AUGUST 1969 - JULY 1971	REVISION NO. BY DATE
	BASIS OF BEARINGS THE CENTER LINE OF AVENUE T (N. 89° 38' 50" E.) AS SHOWN ON C.S.B-2978-1.			SURVEYED F. B. 2691 - 219 - 280 F. B. 1680 - 181 - 218 JOB NUMBER 0097.70 INDEX MAP NO. 66
	REFERENCE F. B. 2691 - 219 - 280 F. B. 1680 - 181 - 218 JOB NUMBER 0097.70 INDEX MAP NO. 66			
	COUNTY SURVEYOR'S MAP NO. B-5166 SHEET 12 OF 13 SHEETS FILED: <i>Jones</i> <i>1977</i> DEPUTY AUGUST 1969 - JULY 1971			

Found 2" iron pipe, wood plug & tag marked "R.C.E. 9783" 12" below surface. See F.B. 3099-55. F.B. 1680-189

Found spike & tag marked "R.C.E. 9783" See F.B. 3099-55. Replaced same with boaf spike & washer. F.B. 1680-189

SECTION CORNER Found County Engineer Monument marked "in handhole. See F.B. 2609-114 & F.B. 2691-231. F.B. 1680-190

Section Line N. 0° 45' 52" W. 2660.73

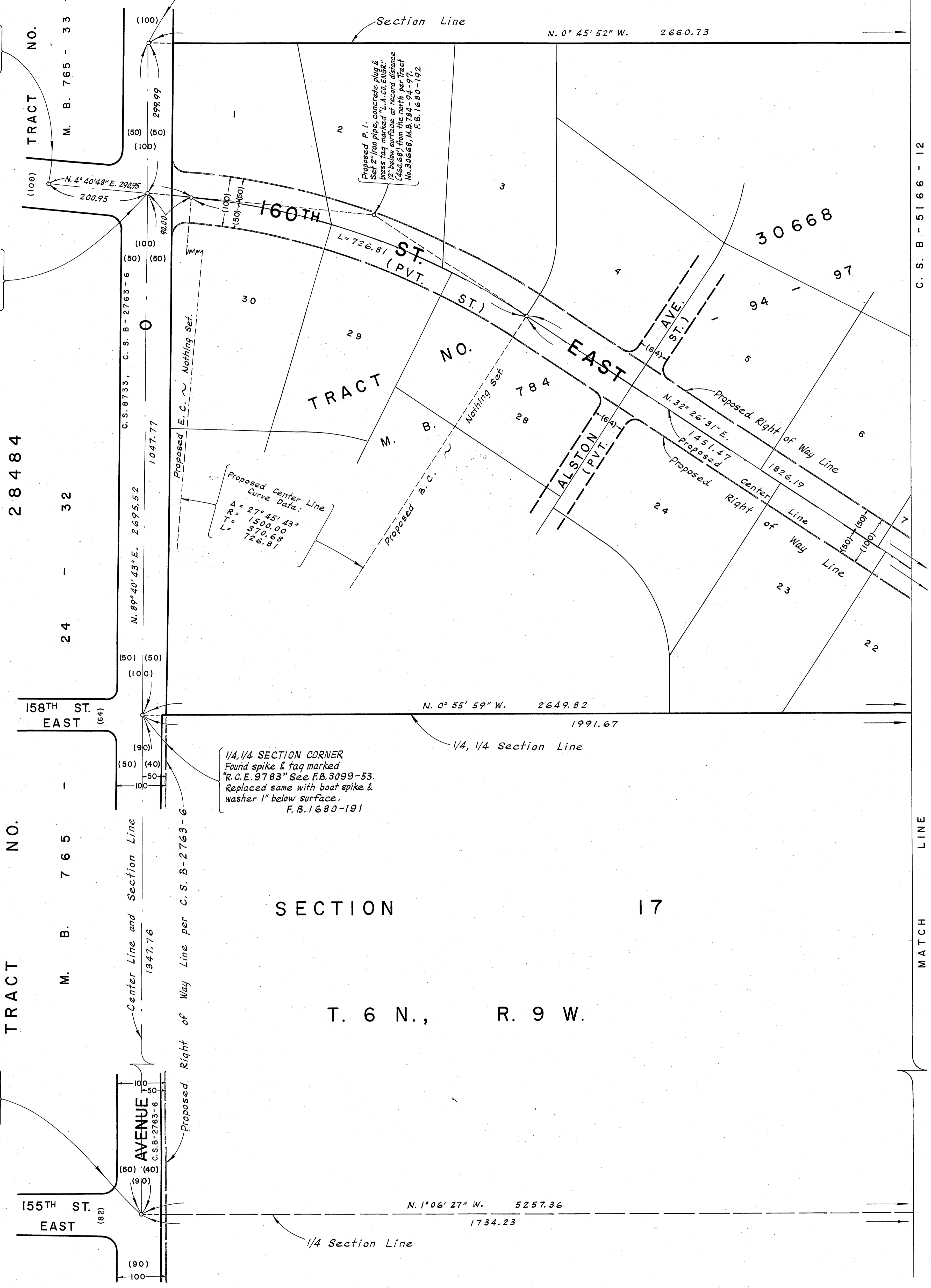
TRACT NO. 28483

TRACT NO. 28484

TRACT NO. 765

SECTION 17

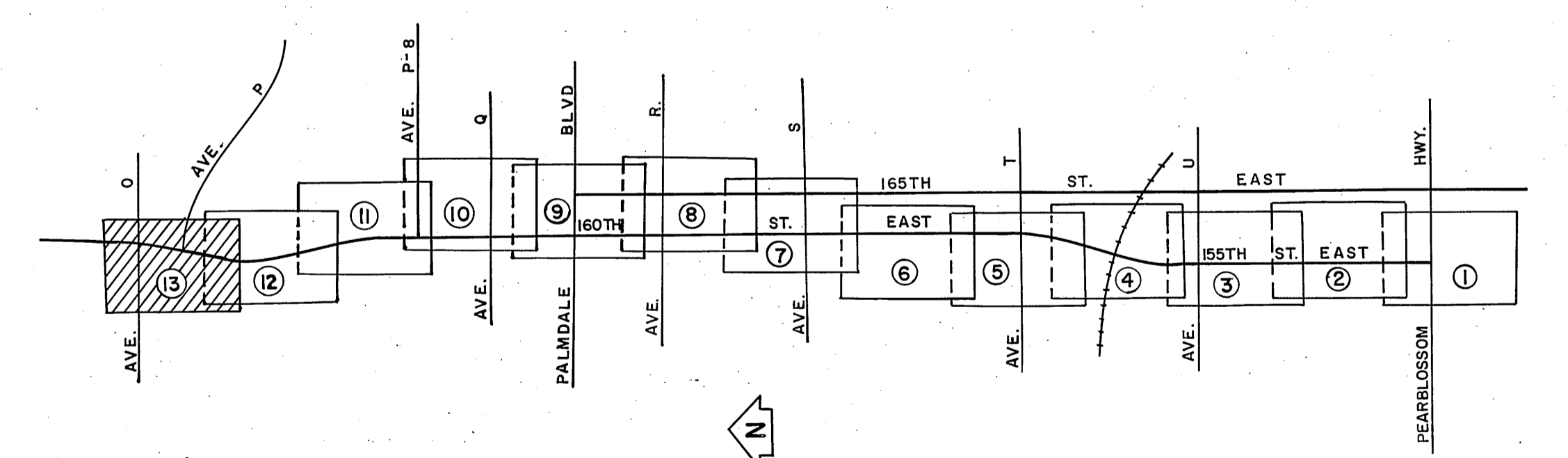
T. 6 N., R. 9 W.



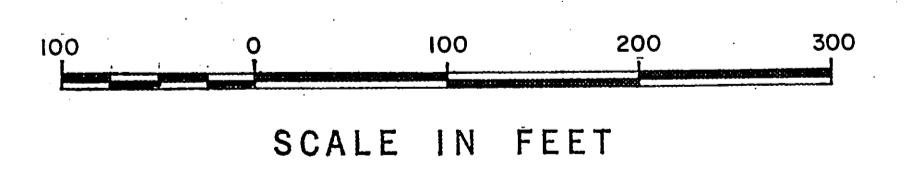
Proposed Center Line Curve Data: A = 27° 45' 43" R = 1500.00 L = 970.69 L' = 726.81

1/4, 1/4 SECTION CORNER Found spike & tag marked "R.C.E. 9783" See F.B. 3099-55. Replaced same with boaf spike & washer 1" below surface. F.B. 1680-191

1/4 SECTION CORNER Found County Engineer Monument marked "in handhole. See F.B. 2609-113. F.B. 1680-185



VICINITY MAP NOT TO SCALE



COUNTY OF LOS ANGELES DEPARTMENT OF COUNTY ENGINEER HARVEY T. BRANDT - COUNTY ENGINEER PREPARED BY SURVEY DIVISION GEORGE J. FRANCESCHINI - DIVISION ENGINEER SURVEYED BY W.J. VOGEL, J.S. COATES CHECKED BY W.A. EDMONDSON DRAWN BY B.H. TABATA	ALIGNMENT MAP OF 155TH STREET EAST - 160TH STREET EAST FROM PEARBLOSSOM HWY. TO AVENUE 0	COUNTY SURVEYOR'S MAP NO. B-5166 SHEET 13 OF 13 SHEETS FILED: <u>June 22, 1972</u> <u>R.J. Mitchell</u> DEPUTY SURVEYOR AUGUST 1969 - JULY 1971	REVISION NO. BY DATE	
	BASIS OF BEARINGS THE CENTER LINE OF AVENUE T (N. 89° 38' 50"E.) AS SHOWN ON C.S.B-2978-1.	REFERENCE F. B. 2691-219-280 F. B. 1680-181-218 JOB NUMBER 0097.70 INDEX MAP NO. 66		