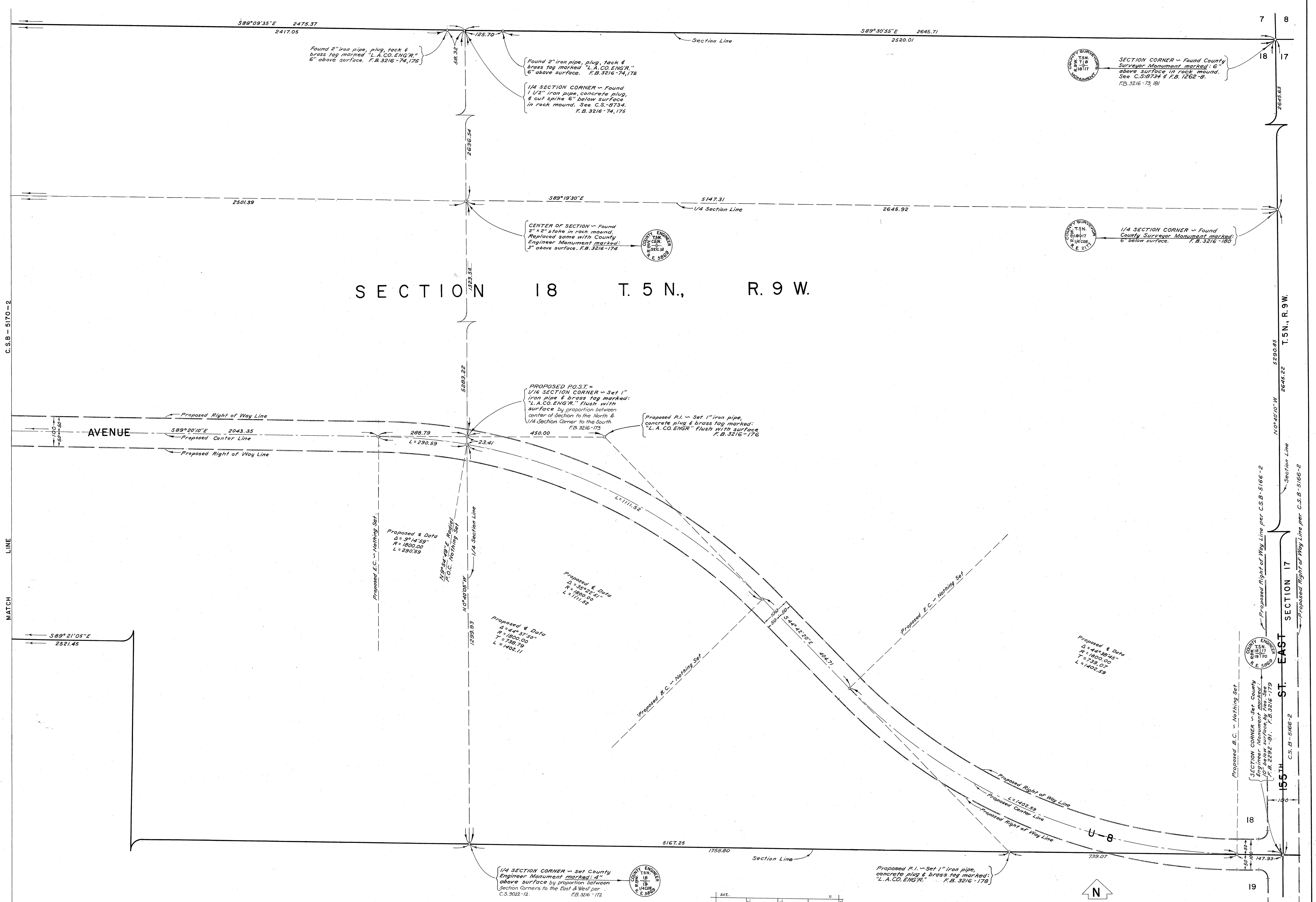
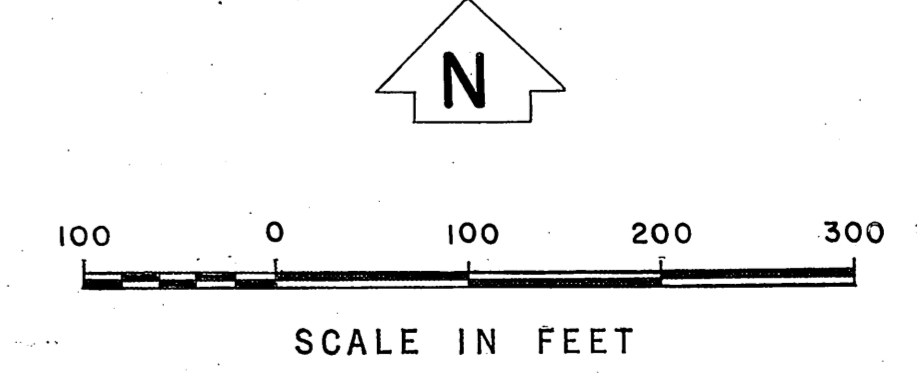
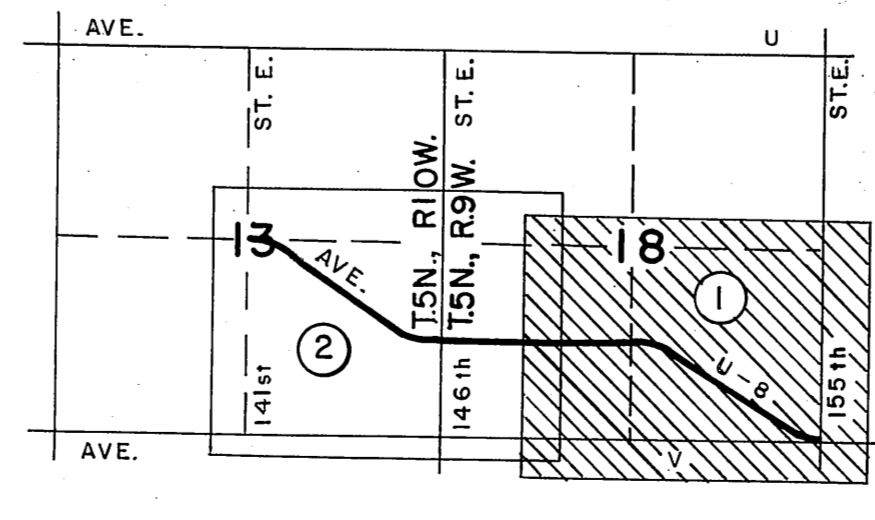


C.S.B-210-1

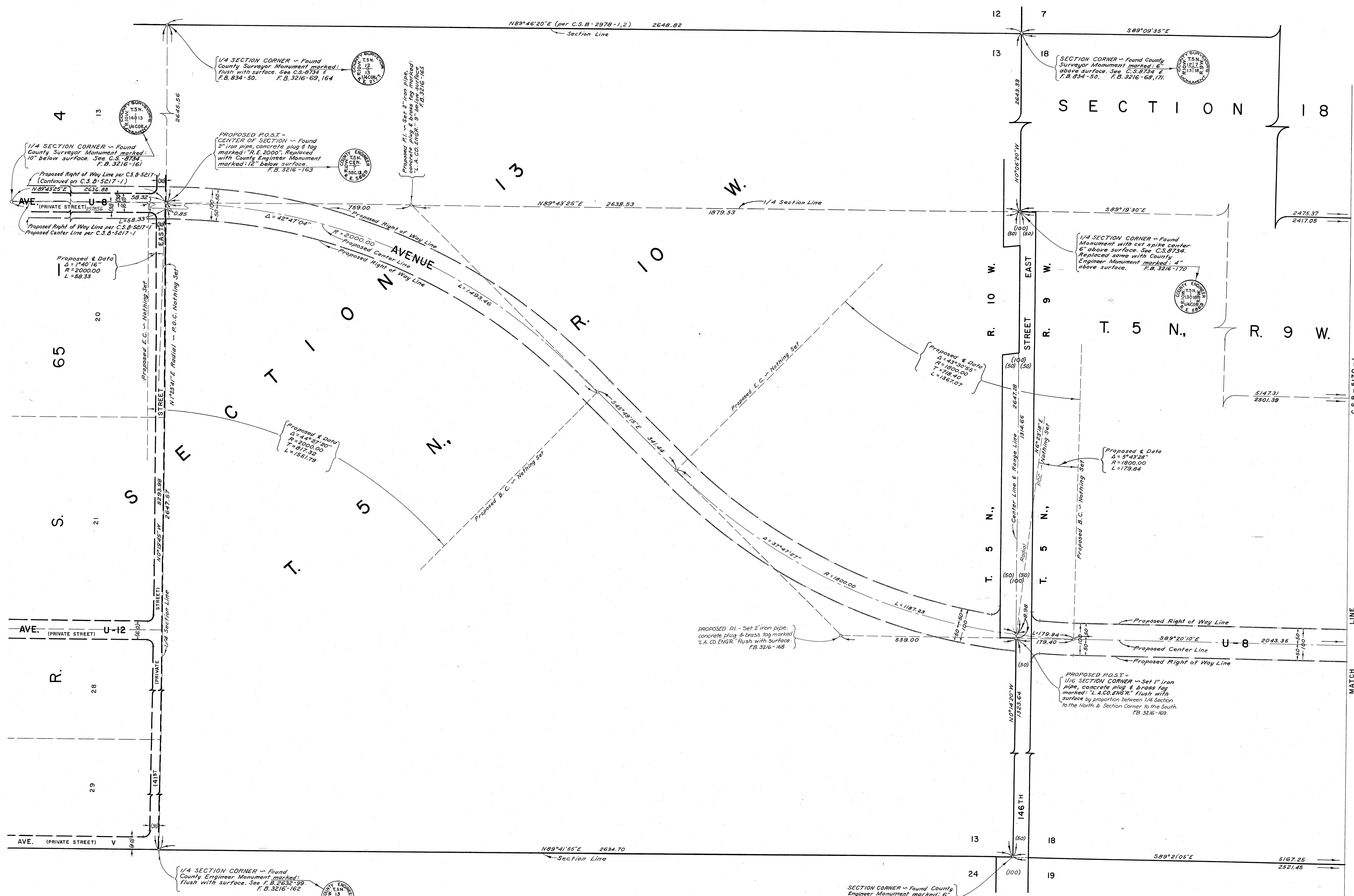


SECTION 19, T. 5 N., R. 9 W.



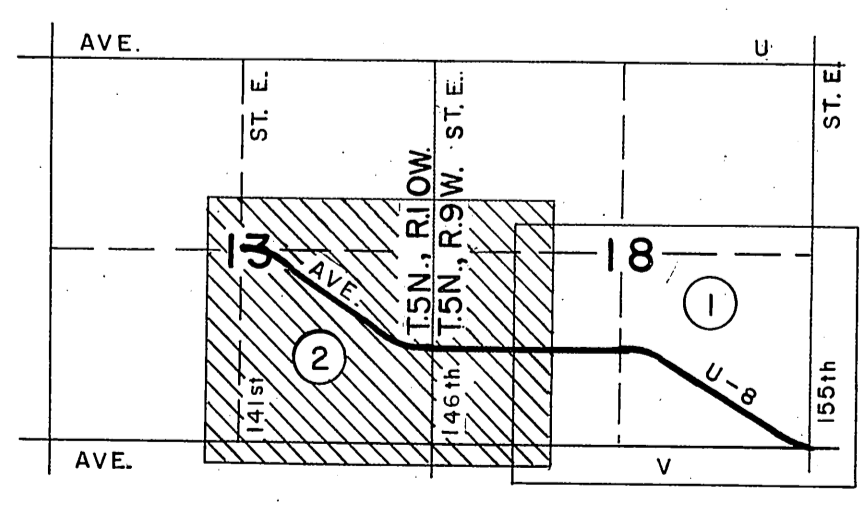
COUNTY OF LOS ANGELES DEPARTMENT OF COUNTY ENGINEER HARVEY T. BRANDT - COUNTY ENGINEER PREPARED BY SURVEY DIVISION GEORGE J. FRANCISCHINI - DIVISION ENGINEER SURVEYED BY J. C. PIERCE CHECKED BY R. MANOR DRAWN BY R. SHEAN - J. MERRILL	ALIGNMENT MAP OF AVENUE U-8 FROM 155TH STREET EAST TO 141ST STREET EAST		COUNTY SURVEYOR'S MAP NO. B-5170 SHEET 1 OF 2 SHEETS FILED <i>May 22 1972</i> DEPUTY SURVEYED NOV. 1969 REFERENCE F.B. 3216-159-181	REVISION NO. BY DATE
	BASIS OF BEARINGS THE SOUTH LINE OF SECTION 12, T.5N., R.10W. (N 69° 46' 20" E) AS SHOWN ON C.S.B-2978-1 & 2			JOB NUMBER 0098.11
	INDEX MAP NO. 66			REVISION NO. BY DATE
	COUNTY ENGINEER HARVEY T. BRANDT DEPUTY SURVEYED NOV. 1969 REFERENCE F.B. 3216-159-181			

C.S.B-210-1

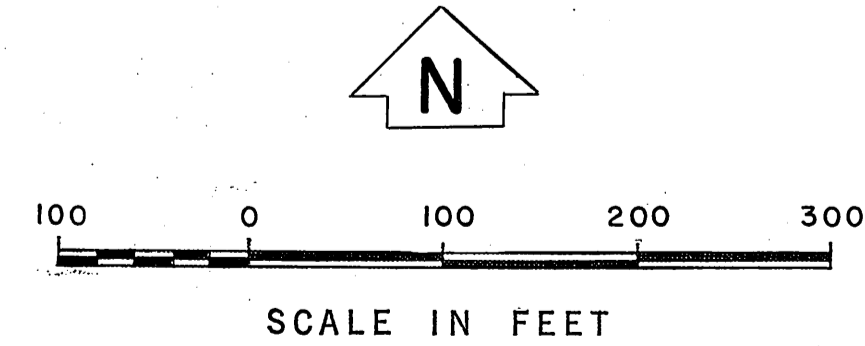


REVISION:
 ① Proposed R/W lines per C.S.B-5217-1 added and Highway note removed.

SECTION 24, T. 5 N., R. 10 W.



VICINITY MAP NOT TO SCALE



COUNTY OF LOS ANGELES DEPARTMENT OF COUNTY ENGINEER HARVEY T. BRANDT COUNTY ENGINEER PREPARED BY SURVEY DIVISION GEORGE J. FRANCESCO DIVISION ENGINEER SURVEYED BY J. C. PIERCE CHECKED BY R. MANOR DRAWN BY R. SHEAN - J. MERRILL	ALIGNMENT MAP OF AVENUE U-8 FROM 155TH STREET EAST TO 141ST STREET EAST BASIS OF BEARINGS THE SOUTH LINE OF SECTION 12, T. 5 N., R. 10 W. (N89°46'20"E) AS SHOWN ON C.S.B-2978-1 & 2	COUNTY SURVEYOR'S MAP NO. B-5170 SHEET 2 OF 2 SHEETS FILED: <i>May 22</i> , 19 <i>77</i> <i>R. J. SHEAN</i> DEPUTY SURVEYED NOV. 1959 REFERENCE F. B. 3216-159-181	REVISION NO. BY DATE ① 5.5 2/19/74
		JOB NUMBER 0098.11	INDEX MAP NO. 66