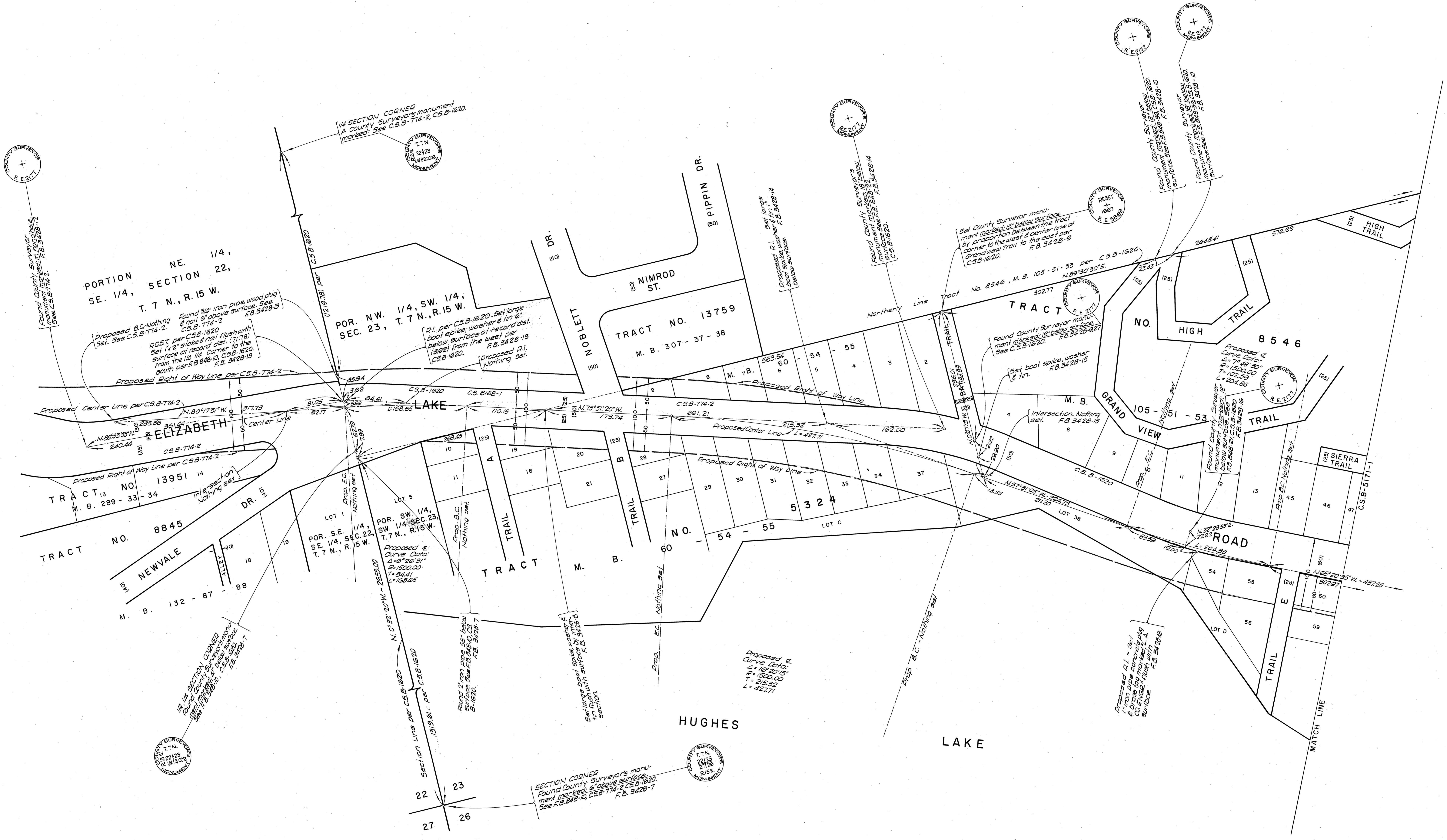
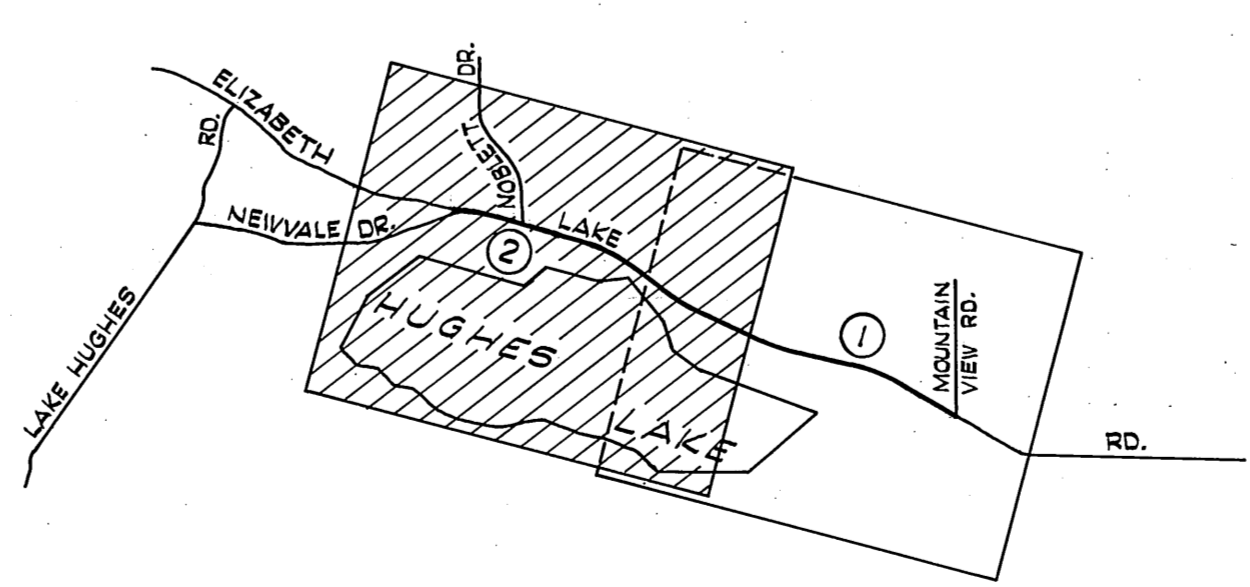


VICINITY MAP NOT TO SCALE

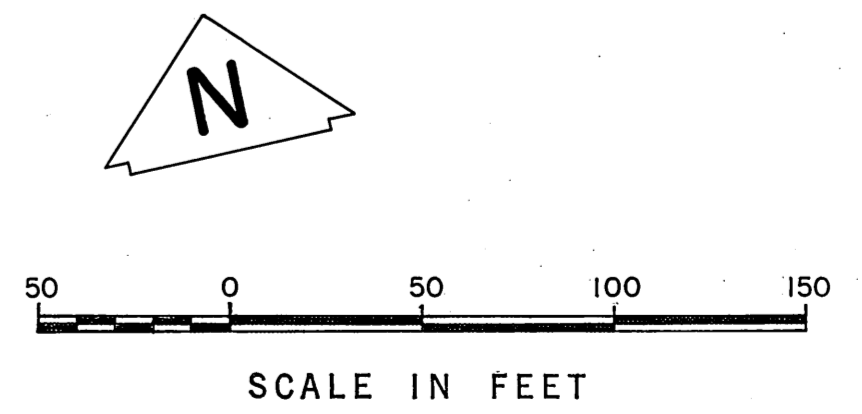
COUNTY OF LOS ANGELES DEPARTMENT OF COUNTY ENGINEER HARVEY T. BRANDT - COUNTY ENGINEER PREPARED BY SURVEY DIVISION GEORGE J. FRANCISCHINI - DIVISION ENGINEER SURVEYED BY J.C. PIERCE CHECKED BY M. ASHLEY DRAWN BY T. ABE - S. KURACHI	ALIGNMENT MAP OF <b>ELIZABETH LAKE ROAD</b> FROM <b>MOUNTAIN VIEW ROAD</b> TO <b>NEWVALE DRIVE</b>		COUNTY SURVEYOR'S MAP NO. <b>B-5171</b>	REVISION NO. BY DATE
	BASIS OF BEARINGS THE NORTHERLY LINE OF TRACT NO. 8546, M.B. 105-51-53, (N. 89°30'30"E.) PER C.S.B-1620		SHEET 1 OF 2 SHEETS FILED: 19-16-19 22 <i>George J. Francischini</i> DEPUTY SURVEYOR MAY - JULY, 1967	
			REFERENCE F. B. 3428 - 5 - 32	
			JOB NUMBER 0074.16	INDEX MAP NO. 72



REVISIONS;  
 ① Bearings of Newvale Dr. corrected.



VICINITY MAP  
 NOT TO SCALE



COUNTY OF LOS ANGELES DEPARTMENT OF COUNTY ENGINEER HARVEY T. BRANDT - COUNTY ENGINEER PREPARED BY SURVEY DIVISION GEORGE J. FRANCESCINI - DIVISION ENGINEER SURVEYED BY J.C. PIERCE CHECKED BY M. ASHLEY DRAWN BY T. ABE - S. KURACHI	ALIGNMENT MAP OF <b>ELIZABETH LAKE ROAD</b> FROM <b>MOUNTAIN VIEW ROAD</b> TO <b>NEWVALE DRIVE</b> BASIS OF BEARINGS THE NORTHERLY LINE OF TRACT NO. 8546, M.B. 105-51-53, (N. 89°30'30"E) PER C.S.B-1620		COUNTY SURVEYOR'S MAP NO. <b>B-5171</b>	REVISION NO. BY DATE ① S.K. 11-15-72
	SHEET 2 OF 2 SHEETS		FILED 19-18, 1972 <i>George J. Francescini</i> DEPUTY	SURVEYED MAY - JULY, 1967
	REFERENCE F.B. 3428-5-32		JOB NUMBER 0074.16	INDEX MAP NO. 72