



PROPOSED CURVE DATA
 $\Delta = 101^{\circ} 57' 52''$
 $R = 1500.00$
 $T = 239.98$
 $L = 478.49$

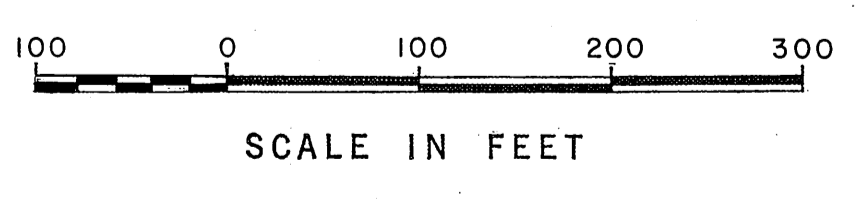
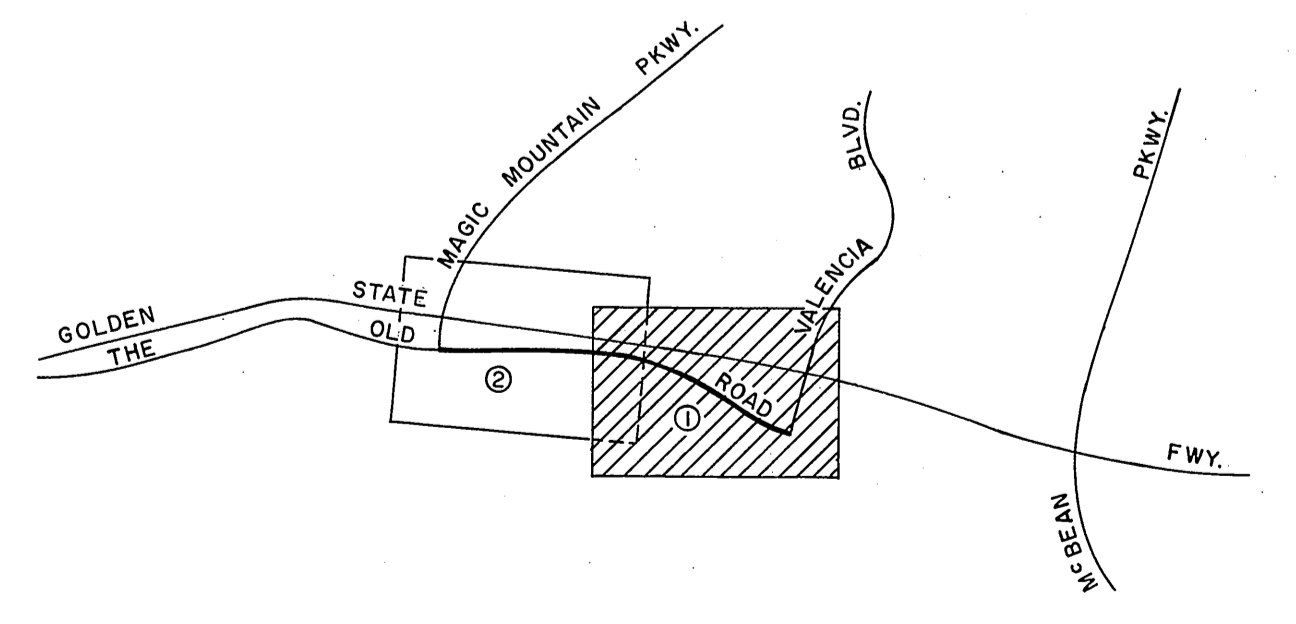
PROPOSED CURVE DATA
 $\Delta = 101^{\circ} 57' 52''$
 $R = 1500.00$
 $T = 239.98$
 $L = 478.49$

PROPOSED CURVE DATA
 $\Delta = 18^{\circ} 10' 00''$
 $R = 1200.00$
 $T = 222.65$
 $L = 572.65$

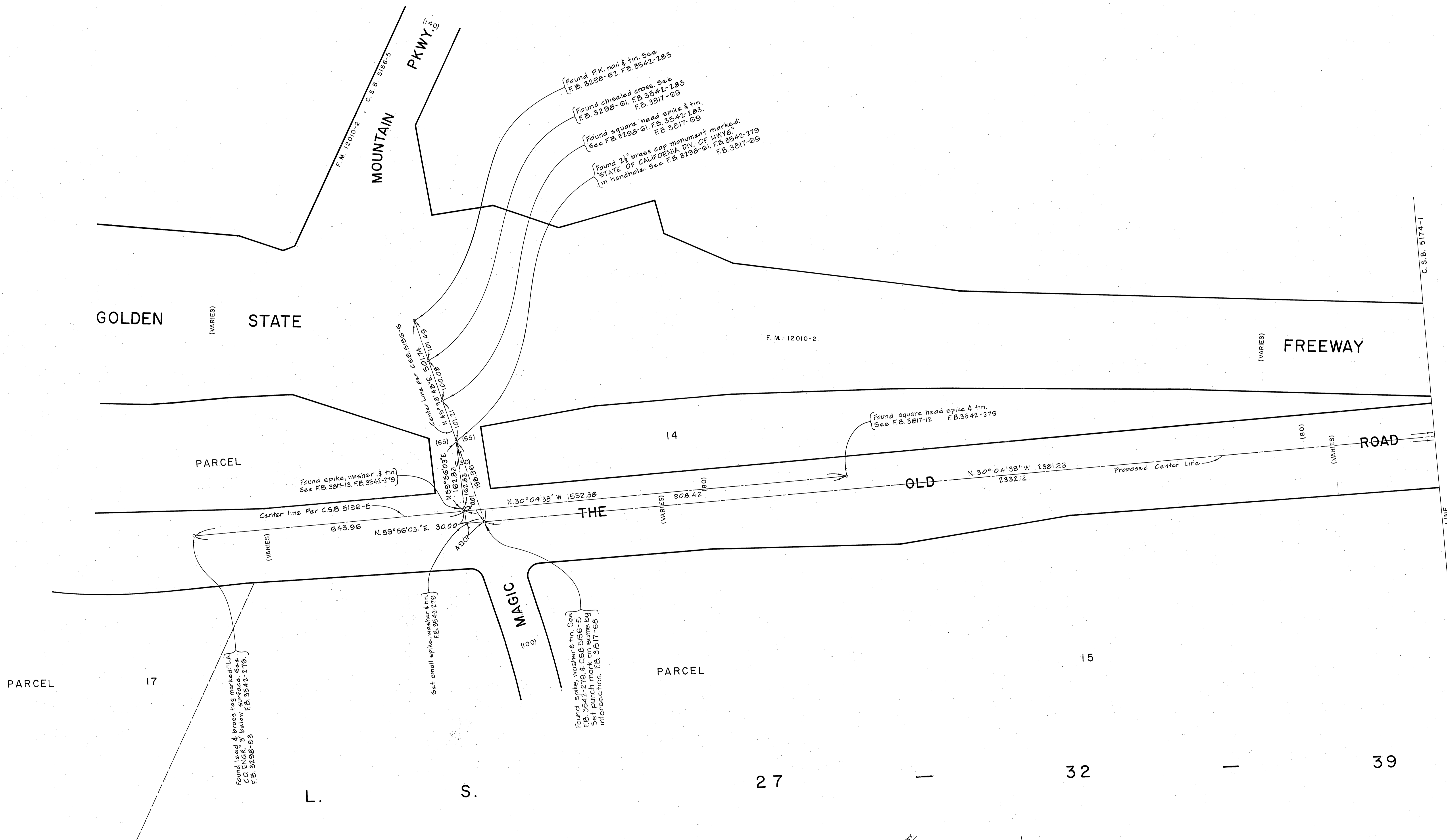
NOTE:
 THE ALIGNMENT OF THE OLD ROAD
 A MAJOR HIGHWAY, AS PROPOSED
 ON THE MASTER PLAN OF HIGHWAYS
 HAD NOT BEEN ESTABLISHED AT THE
 TIME OF THE FILING OF THIS MAP

PARCEL 15
 L. S. 27 - 32 - 39

PARCEL S.
 27 - 19 - 21



COUNTY OF LOS ANGELES DEPARTMENT OF COUNTY ENGINEER HARVEY T. BRANDT - COUNTY ENGINEER PREPARED BY SURVEY DIVISION GEORGE J. FRANCESCHINI - DIVISION ENGINEER SURVEYED BY W. FREELAND (L.A. CO. ROAD DEPT.) CHECKED BY J.M. CAVATAIO DRAWN BY R.R. SHEAN, C. MOTEN	ALIGNMENT MAP OF THE OLD ROAD FROM VALENCIA BLVD. TO MAGIC MOUNTAIN PKWY. BASIS OF BEARINGS THE CENTERLINE OF MAGIC MOUNTAIN PKWY. (N.45°38'48"E) AS SHOWN ON C.S.B-5156-5		COUNTY SURVEYOR'S MAP NO. B-5174 SHEET 1 OF 2 SHEETS FILED: <i>Harvey T. Brandt</i> DEPUTY SURVEYED JANUARY - MARCH, 1971 REFERENCE F.B. 3542-271-280 JOB NUMBER 0086.62	REVISION NO. BY DATE



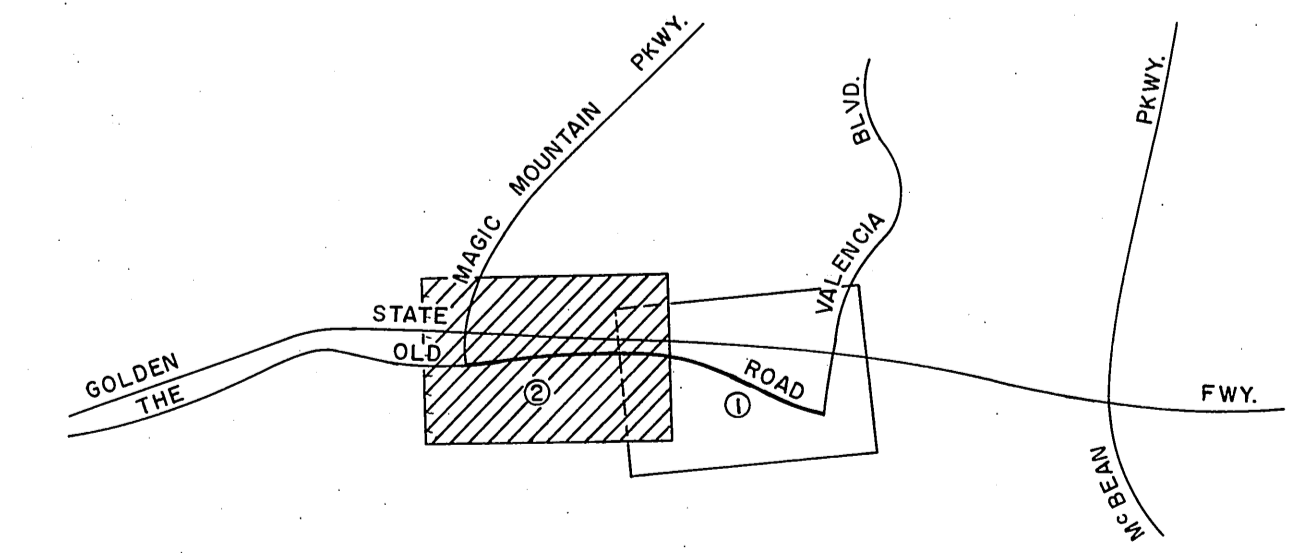
Found lead & witness peg marked 'LA' C.D. 21298-93 below surface see F.B. 3542-219.

Found spike, washer & tin See F.B. 3817-13, F.B. 3542-219.

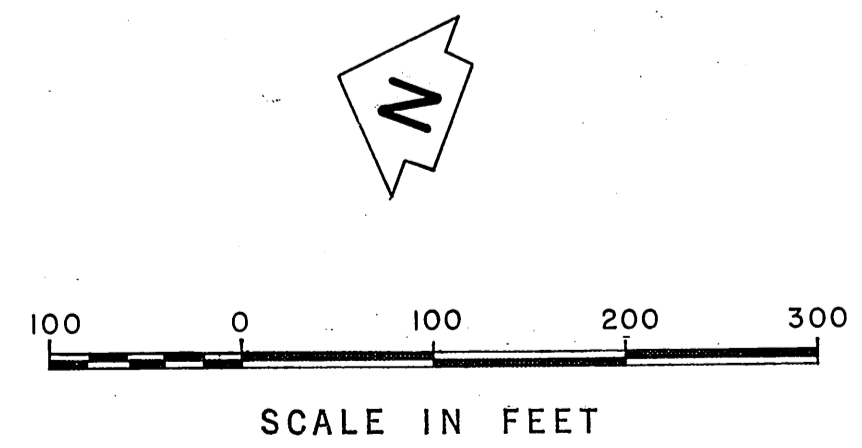
Set small spike, washer & tin. See F.B. 3542-219.

Found spike, washer & tin. See F.B. 3542-219 & C.S.B. 5156-5. Set punch mark. See F.B. 3542-219.

Found PK nail & tin. See F.B. 3198-62, F.B. 3542-283.
 Found chiseled cross. See F.B. 3198-61, F.B. 3542-283, F.B. 3817-69.
 Found square head spike & tin. See F.B. 3198-61, F.B. 3542-283, F.B. 3817-69.
 Found 2 1/2" brass cap monument marked STATE OF CALIFORNIA DIV. OF HIGHWAYS in handhole. See F.B. 3198-61, F.B. 3542-279, F.B. 3817-69.



VICINITY MAP NOT TO SCALE



COUNTY OF LOS ANGELES DEPARTMENT OF COUNTY ENGINEER HARVEY T. BRANDT - COUNTY ENGINEER PREPARED BY SURVEY DIVISION GEORGE J. FRANCESCHINI - DIVISION ENGINEER SURVEYED BY W. FREELAND (L.A. CO. ROAD DEPT.) CHECKED BY J.M. CAVATAIO DRAWN BY R.R. SHEAN, C. MOTEN	ALIGNMENT MAP OF		COUNTY SURVEYOR'S MAP NO.	
	THE OLD ROAD		B-5174	
	FROM VALENCIA BLVD. TO MAGIC MOUNTAIN PKWY.		SHEET 2 OF 2 SHEETS	
	BASIS OF BEARINGS THE CENTERLINE OF MAGIC MOUNTAIN PKWY. (N.45°38'48"E) AS SHOWN ON C.S.B. 5156-5		FILED: <i>November 18 1972</i> <i>R.J. Mitchell</i> DEPUTY	
		SURVEYED JANUARY-MARCH, 1971		NO. BY DATE
		REFERENCE F.B. 3542-271-280		
		JOB NUMBER 0096.62		INDEX MAP NO. 249-057 264-037