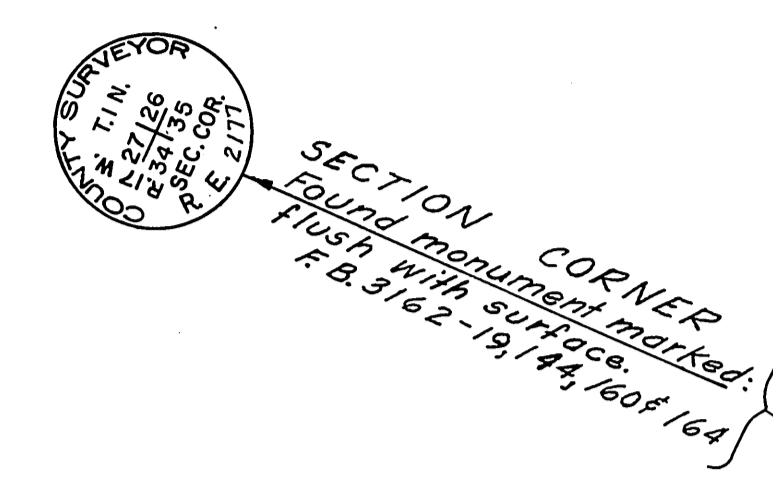
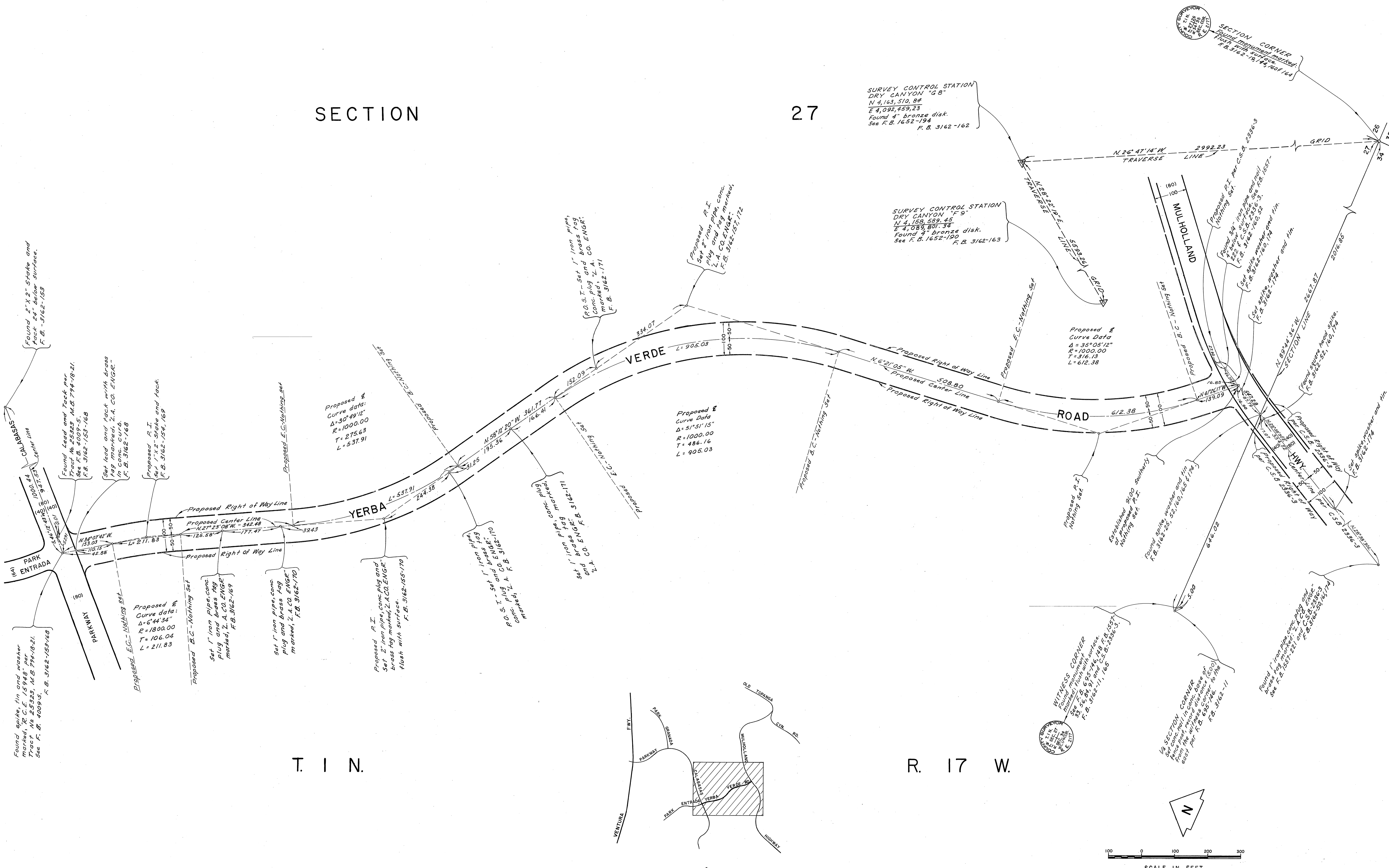


SECTION

27



SURVEY CONTROL STATION
 DRY CANYON "G B"
 N 4,163,510.84
 E 4,092,459.23
 Found 4" bronze disk.
 See F.B. 1652-194
 F.B. 3162-162

SURVEY CONTROL STATION
 DRY CANYON "F 9"
 N 4,158,589.45
 E 4,089,801.34
 Found 4" bronze disk.
 See F.B. 1652-190
 F.B. 3162-163

Proposed E
 Curve data:
 $\Delta = 30^{\circ} 49' 12''$
 $R = 1000.00$
 $T = 275.63$
 $L = 537.91$

Proposed E
 Curve data:
 $\Delta = 51^{\circ} 51' 15''$
 $R = 1000.00$
 $T = 486.16$
 $L = 905.03$

Proposed E
 Curve data:
 $\Delta = 30^{\circ} 05' 12''$
 $R = 1000.00$
 $T = 316.13$
 $L = 612.38$

Proposed E
 Curve data:
 $\Delta = 6^{\circ} 44' 34''$
 $R = 1800.00$
 $T = 106.04$
 $L = 211.83$

Proposed R.I.
 Set 2" iron pipe, conc. plug and
 brass tag marked, L.A. CO. ENGR.
 flush with surface.
 F.B. 3162-165-170

P.O.S.T. - set 1" iron pipe,
 conc. plug and brass tag
 marked, L.A. CO. ENGR.
 F.B. 3162-169

set 1" iron pipe, conc.
 plug and brass tag
 marked, L.A. CO. ENGR.
 F.B. 3162-170

set 1" iron pipe, conc. plug
 and brass tag marked,
 L.A. CO. ENGR.
 F.B. 3162-171

Proposed R.I.
 Set 2" iron pipe, conc.
 plug and brass tag
 marked, L.A. CO. ENGR.
 F.B. 3162-172

Found 2" x 2" stake and
 tack 24" below surface.
 F.B. 3162-153

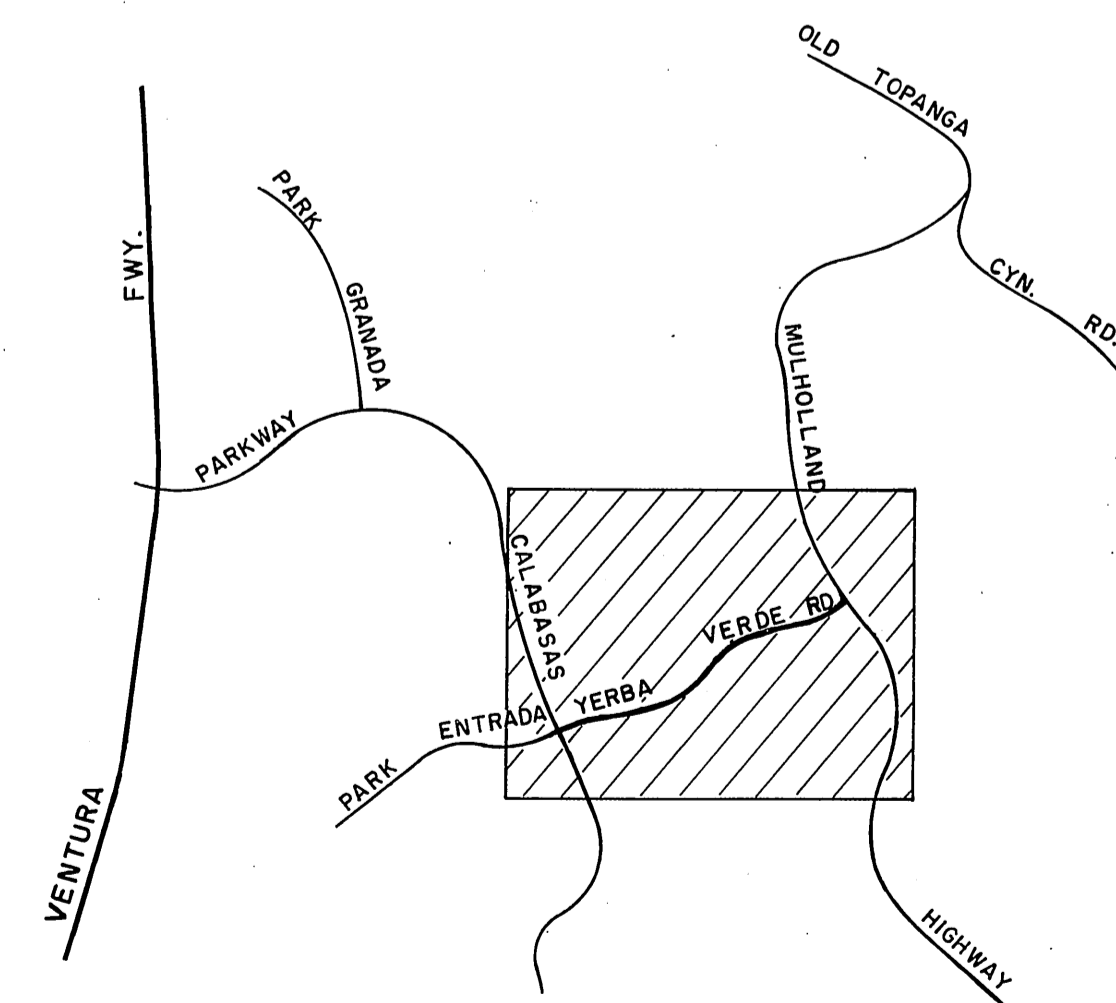
Found lead and tack set
 Treat 16,25283, M.S. 794-18-21.
 See F.B. 4009-5.
 F.B. 3162-153-168

Set lead and tack with brass
 tag marked, L.A. CO. ENGR.
 in conc. curb.
 F.B. 3162-168

Proposed R.I.
 Set 2" x 2" stake and tack
 F.B. 3162-154, 169

T I N.

R. 17 W.

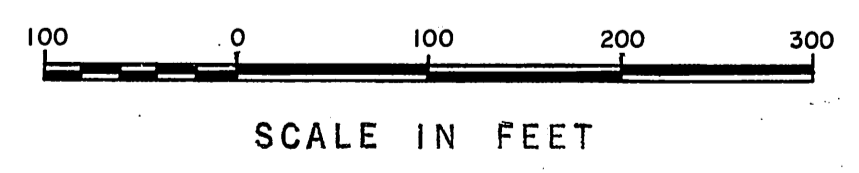


VICINITY MAP
NOT TO SCALE

WITNESS COINER
 Found, plus witness
 See F.B. 3162-171, 169
 F.B. 3162-171, 169

1/2 SECTION CORNER
 Set 2" iron pipe, conc. plug and
 brass tag marked, L.A. CO. ENGR.
 east of the witness coiner, 10 ft
 from the witness coiner, 10 ft
 east of the witness coiner, 10 ft
 See F.B. 1652-221, 169
 F.B. 3162-171

Found 1" iron pipe, conc. plug and
 brass tag marked, L.A. CO. ENGR.
 See F.B. 1652-221, 169
 F.B. 3162-174



COUNTY OF LOS ANGELES DEPARTMENT OF COUNTY ENGINEER HARVEY T. BRANDT—COUNTY ENGINEER PREPARED BY SURVEY DIVISION GEORGE J. FRANCESCINI—DIVISION ENGINEER SURVEYED BY R.C. DALE CHECKED BY G.D. BAILEY DRAWN BY K.L. ADAMS & L.V. KUBUR	ALIGNMENT MAP OF YERBA VERDE ROAD FROM MULHOLLAND HIGHWAY TO PARKWAY CALABASAS BASIS OF BEARINGS CALIFORNIA COORDINATE SYSTEM, ZONE 7		COUNTY SURVEYOR'S MAP NO. B-5190 SHEET 1 OF 1 SHEET FILED: <i>July 2</i> 1973 <i>R. C. Dale</i> DEPUTY SURVEYED JULY 1972 REFERENCE F.B. 3162	REVISION NO. BY DATE
	JOB NUMBER 0098.16		INDEX MAP NO. 159 - 077	