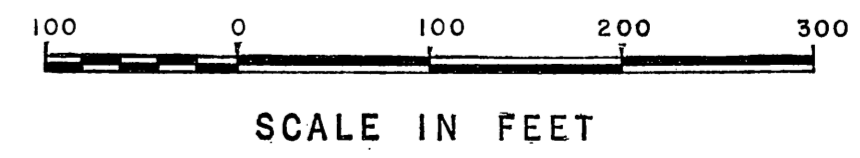
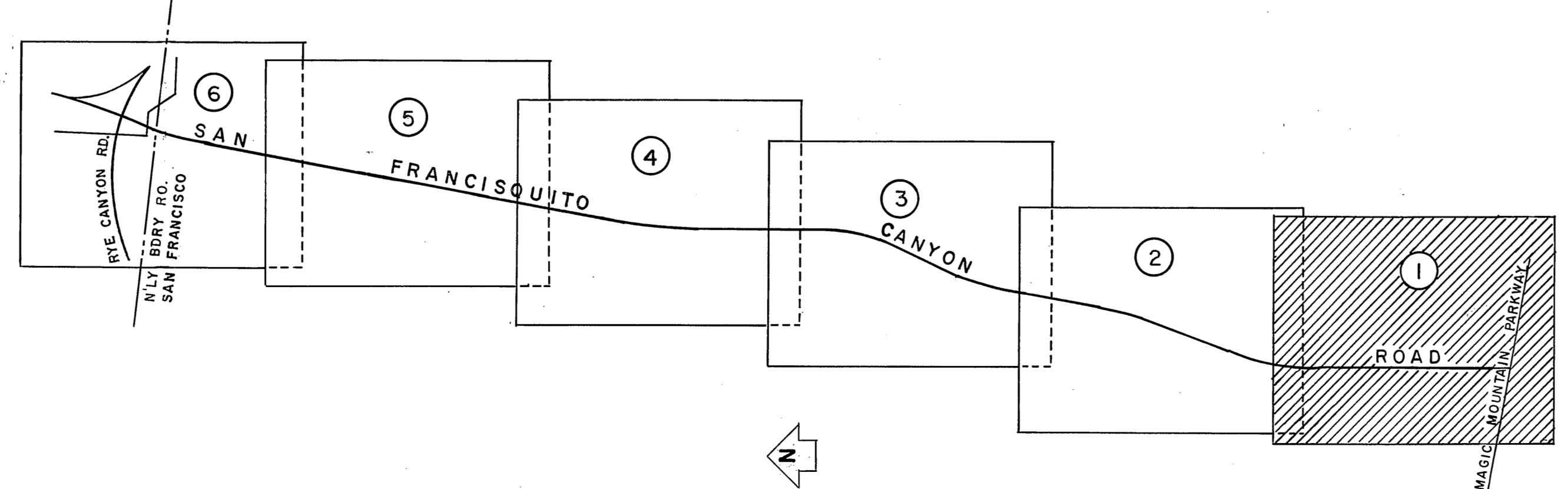
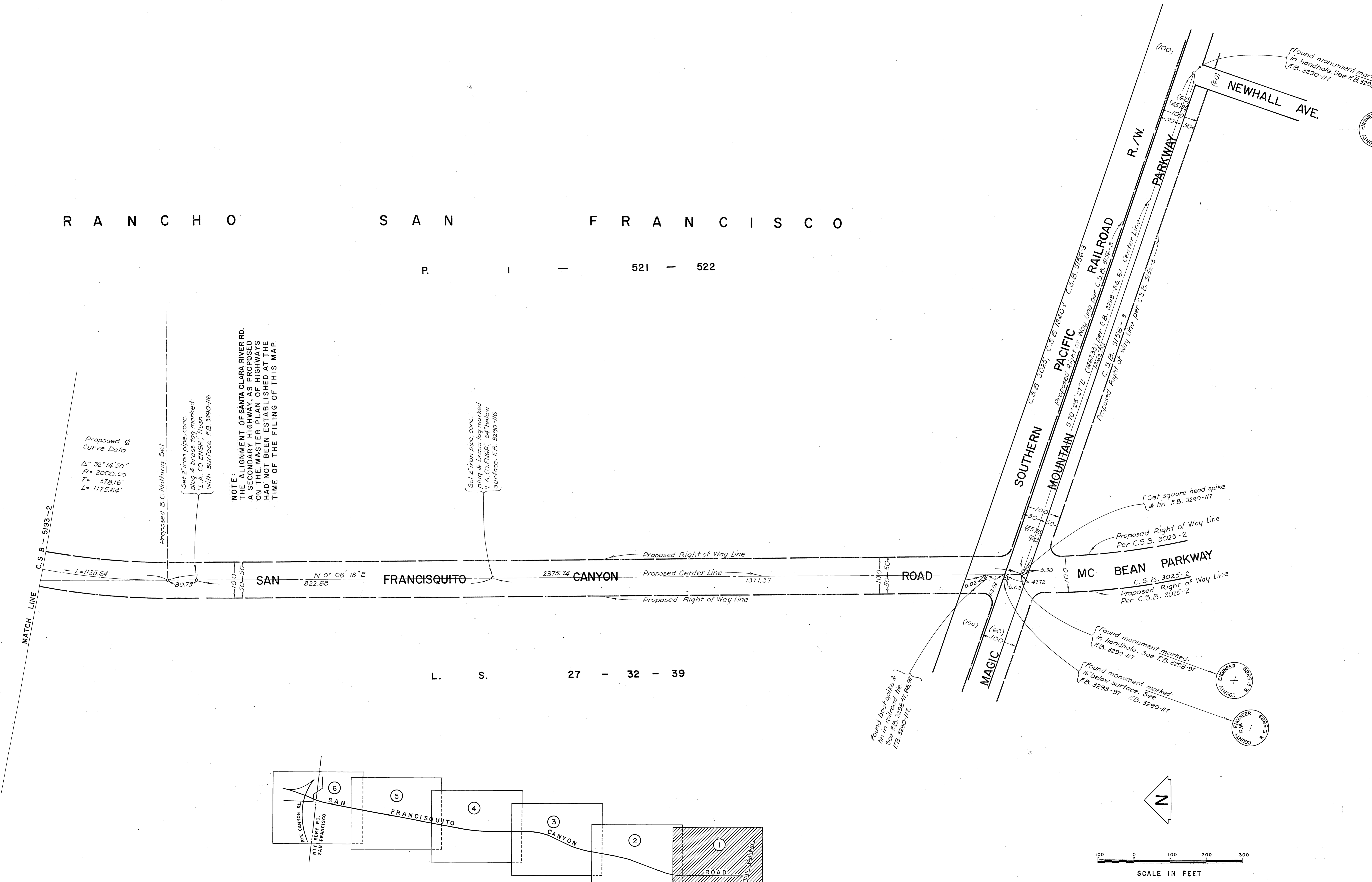


C 2 B - 2 1 2 3 - 1

# R A N C H O S A N F R A N C I S C O

P I - 5 2 1 - 5 2 2

L S 2 7 - 3 2 - 3 9



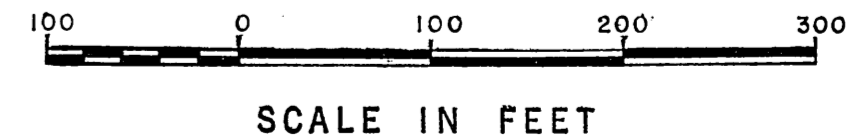
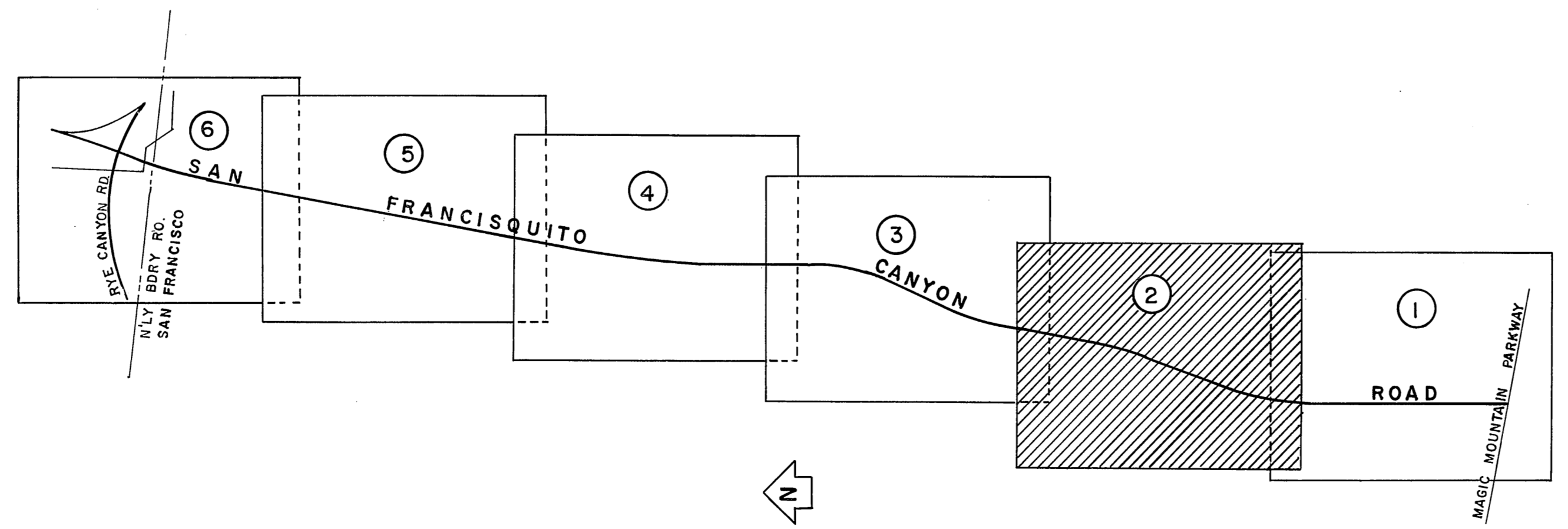
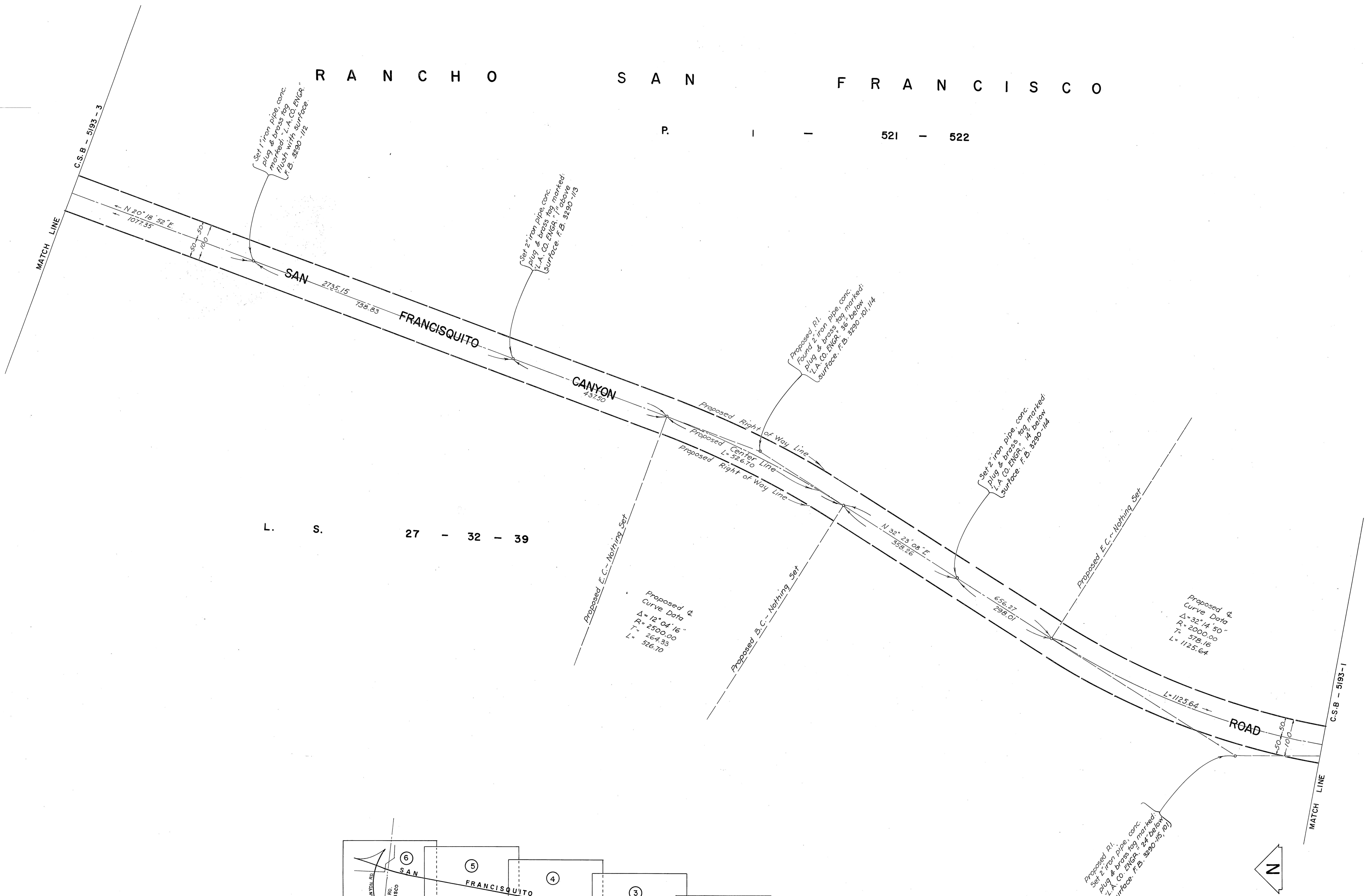
COUNTY OF LOS ANGELES <b>DEPARTMENT OF COUNTY ENGINEER</b> HARVEY T. BRANDT—COUNTY ENGINEER PREPARED BY SURVEY DIVISION GEORGE J. FRANCISCHINI—DIVISION ENGINEER SURVEYED BY BURKHOLDER CHECKED BY T. ABE E. NISHIYAMA DRAWN BY F. GUILLERMO	<b>ALIGNMENT MAP OF</b> <b>SAN FRANCISQUITO CANYON ROAD</b> FROM <b>MAGIC MOUNTAIN PARKWAY</b> TO <b>RYE CANYON ROAD</b> BASIS OF BEARINGS CALIFORNIA COORDINATE SYSTEM, ZONE 7		COUNTY SURVEYOR'S MAP NO. <b>B-5193</b> SHEET 1 OF 6 SHEETS FILED: <i>[Signature]</i> 19 73 <i>[Signature]</i> SURVEYED <b>APRIL - JULY 1971</b> REFERENCE F. B. 3290	REVISION NO. BY DATE
	JOB NUMBER 009625			INDEX MAP NO. 264 - 117 & 77
	COUNTY ENGINEER DEPT. S. E.			
	COUNTY ENGINEER DEPT. S. E.			
	COUNTY ENGINEER DEPT. S. E.			

C 2 B - 2 1 2 3 - 1

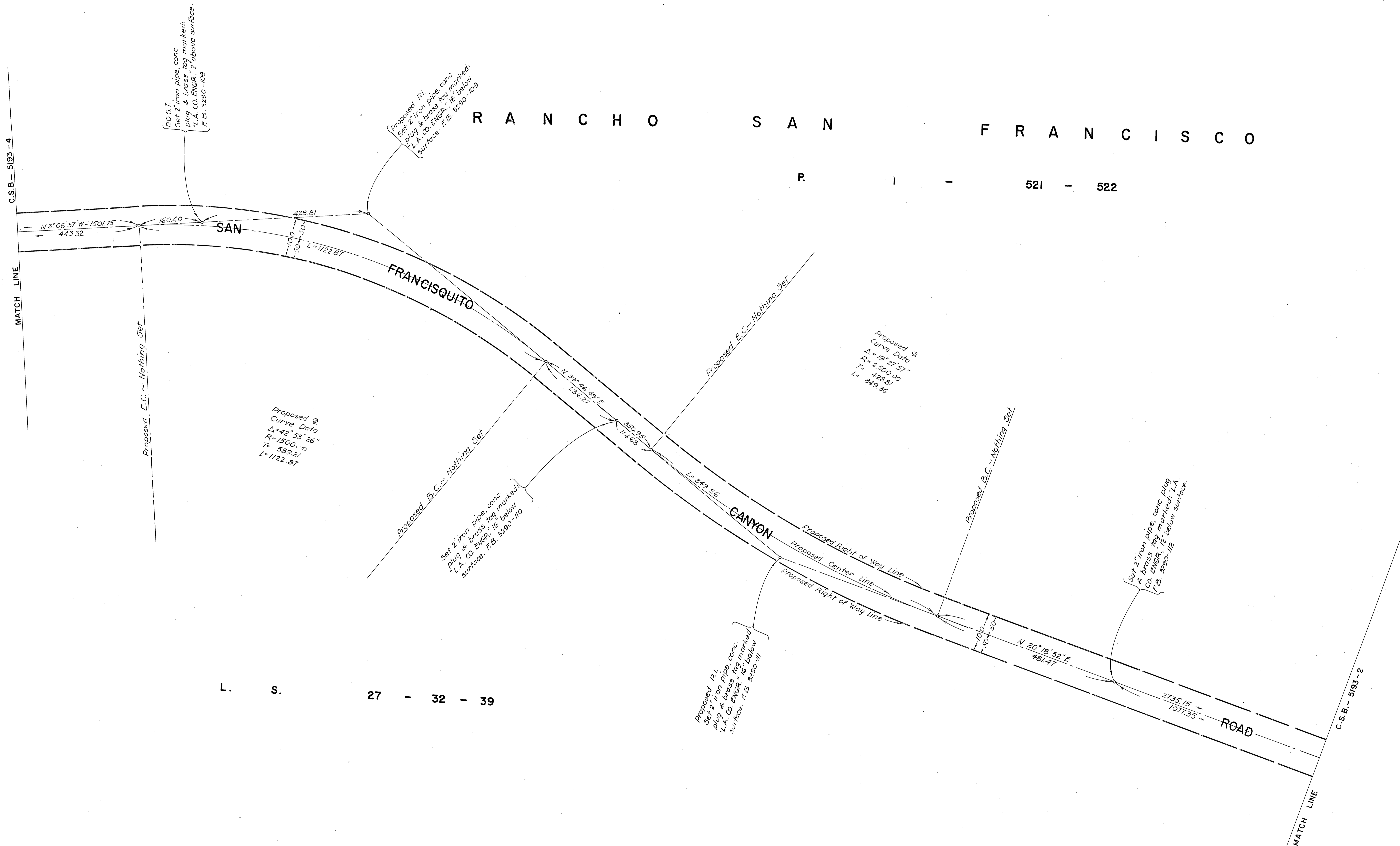
R A N C H O S A N F R A N C I S C O

P I - 5 2 1 - 5 2 2

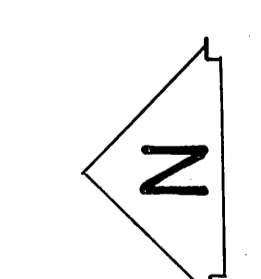
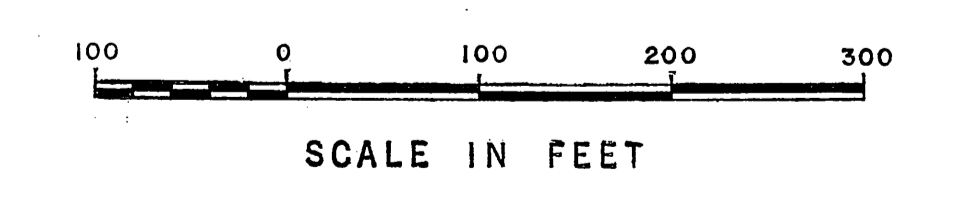
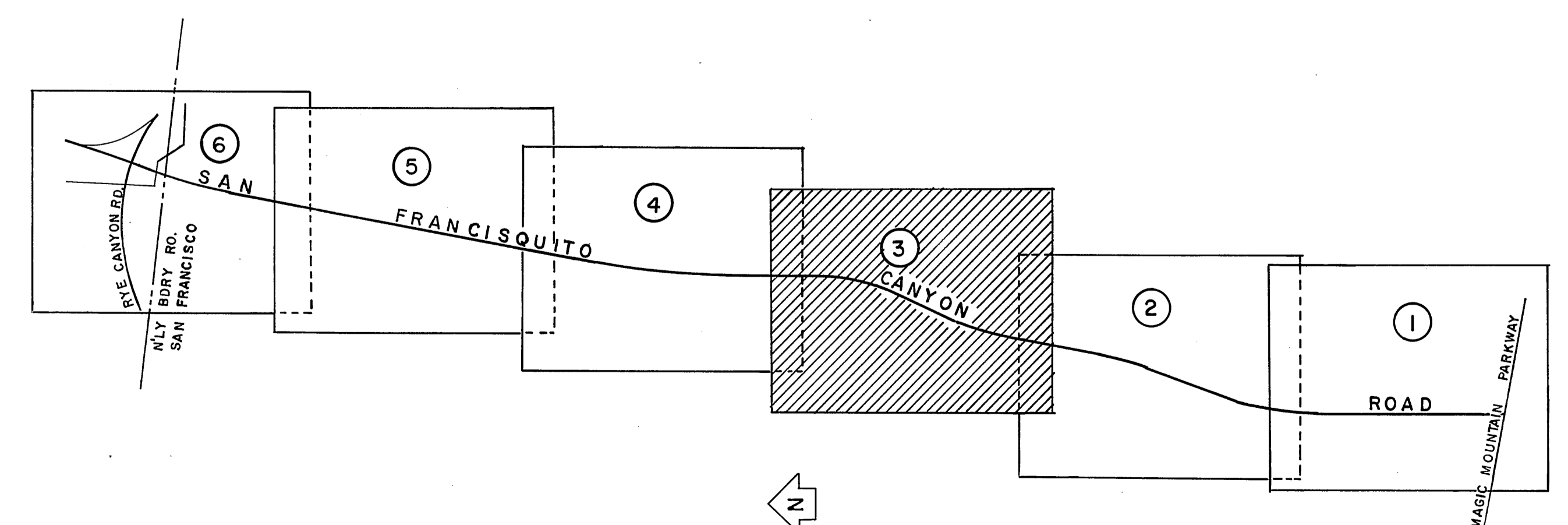
L. S. 2 7 - 3 2 - 3 9



COUNTY OF LOS ANGELES DEPARTMENT OF COUNTY ENGINEER HARVEY T. BRANDY—COUNTY ENGINEER PREPARED BY SURVEY DIVISION GEORGE J. FRANGESCHINI—DIVISION ENGINEER SURVEYED BY SURKHOLDER CHECKED BY T. ABE E. NISHIYAMA F. GUILLERMO	<b>ALIGNMENT MAP OF</b> <b>SAN FRANCISQUITO CANYON ROAD</b> FROM MAGIC MOUNTAIN PARKWAY TO RYE CANYON ROAD BASIS OF BEARINGS CALIFORNIA COORDINATE SYSTEM, ZONE 7	COUNTY SURVEYOR'S MAP NO. <b>B-5193</b>	REVISION NO. BY DATE
		SHEET 2 OF 6 SHEETS FILED: <i>[Signature]</i> 1971 DEPUTY SURVEYED APRIL — JULY 1971 REFERENCE F. B. 3290	JOB NUMBER 0096.25



L. S. 27 - 32 - 39

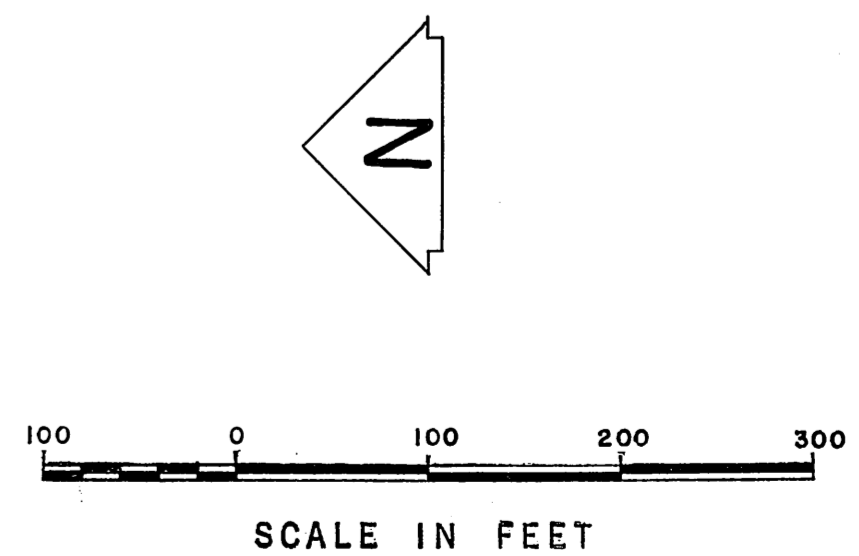
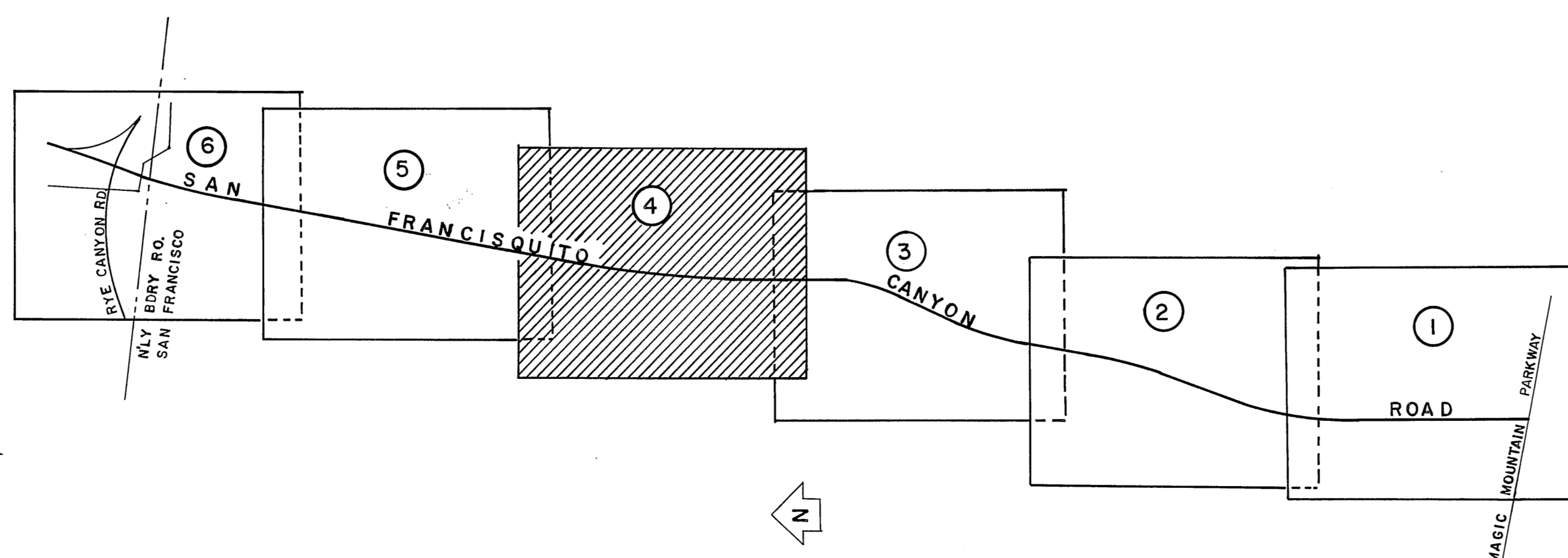
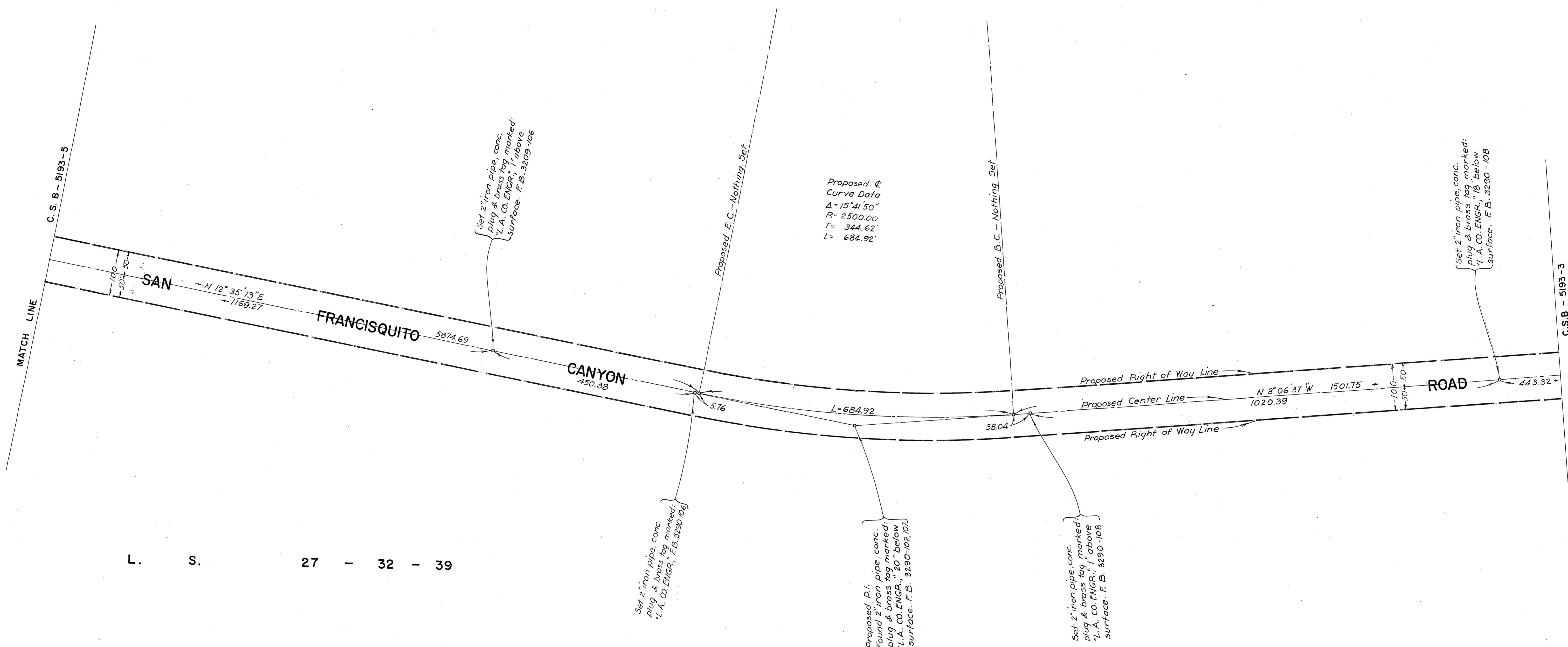


COUNTY OF LOS ANGELES DEPARTMENT OF COUNTY ENGINEER HARVEY T. BRANDT—COUNTY ENGINEER PREPARED BY SURVEY DIVISION GEORGE J. FRANCISCHINI—DIVISION ENGINEER SURVEYED BY E. URKHOLDER CHECKED BY T. ARE E. NISHIYAMA DRAWN BY F. GUILLERMO	ALIGNMENT MAP OF <b>SAN FRANCISQUITO CANYON ROAD</b> FROM MAGIC MOUNTAIN PARKWAY TO RYE CANYON ROAD BASIS OF BEARINGS CALIFORNIA COORDINATE SYSTEM, ZONE 7	COUNTY SURVEYOR'S MAP NO. <b>B-5193</b>	REVISION NO. BY DATE
		SHEET 3 OF 6 SHEETS FILED: <i>[Signature]</i> 19 73 DEPUTY SURVEYED APRIL - JULY 1971 REFERENCE F.B. 3290	JOB NUMBER 009625



R A N C H O S A N F R A N C I S C O

P I - 521 - 522



COUNTY OF LOS ANGELES DEPARTMENT OF COUNTY ENGINEER HARVEY T. BRANDT - COUNTY ENGINEER PREPARED BY SURVEY DIVISION GEORGE J. FRANCISCHINI - DIVISION ENGINEER SURVEYED BY BURKHOLDER CHECKED BY T. ABE E. NISHIYAMA F. GUILLELMO DRAWN BY	ALIGNMENT MAP OF <b>SAN FRANCISQUITO CANYON ROAD</b> FROM MAGIC MOUNTAIN PARKWAY TO RYE CANYON ROAD BASIS OF BEARINGS CALIFORNIA COORDINATE SYSTEM, ZONE 7	COUNTY SURVEYOR'S MAP NO. <b>B-5193</b>	REVISION NO. BY DATE
		SHEET 4 OF 6 SHEETS FILED: <i>[Signature]</i> 19 73 DEPUTY SURVEYED APRIL - JULY 1971 REFERENCE F. B. 3290 JOB NUMBER 009625 INDEX MAP NO. 264-117 & 77	

C 2 B-2103-2

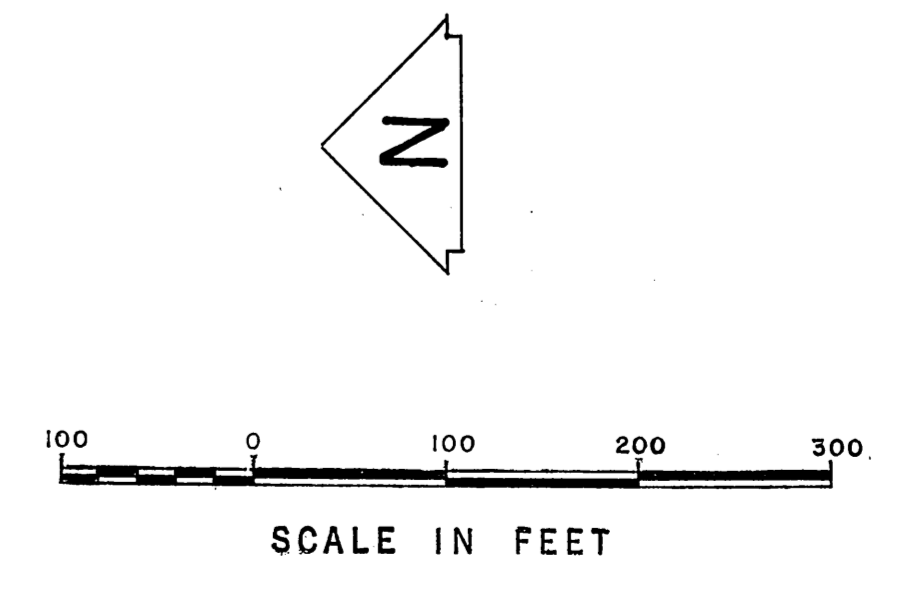
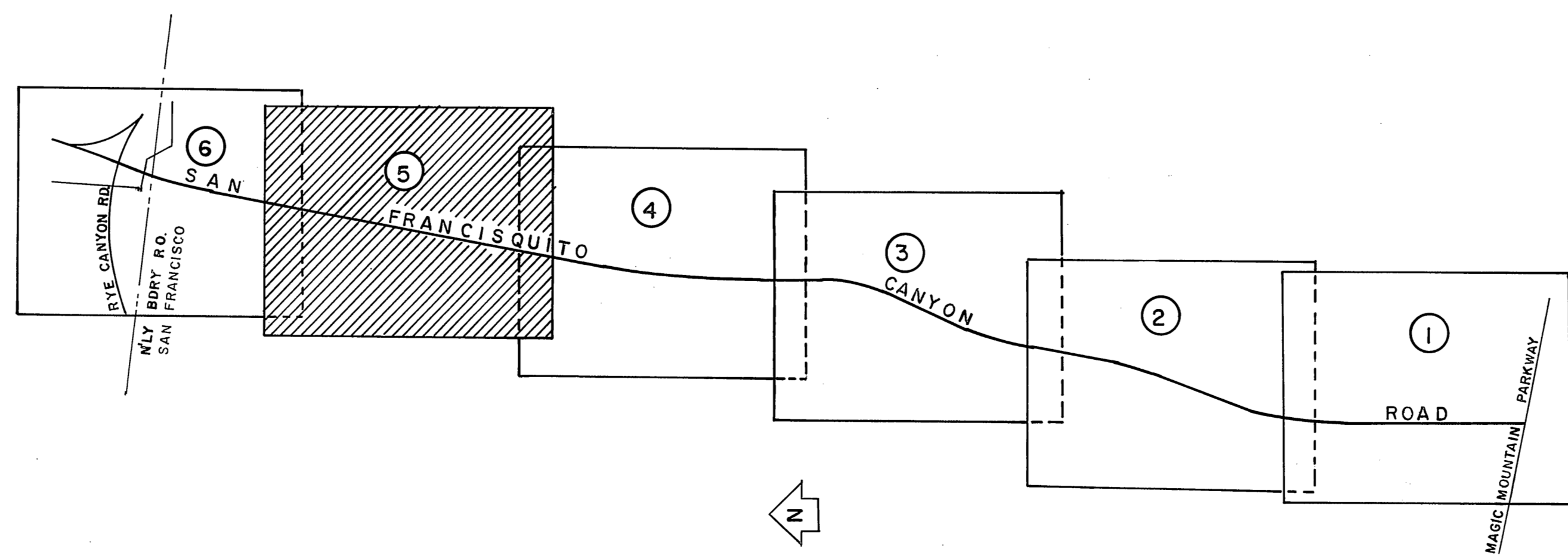
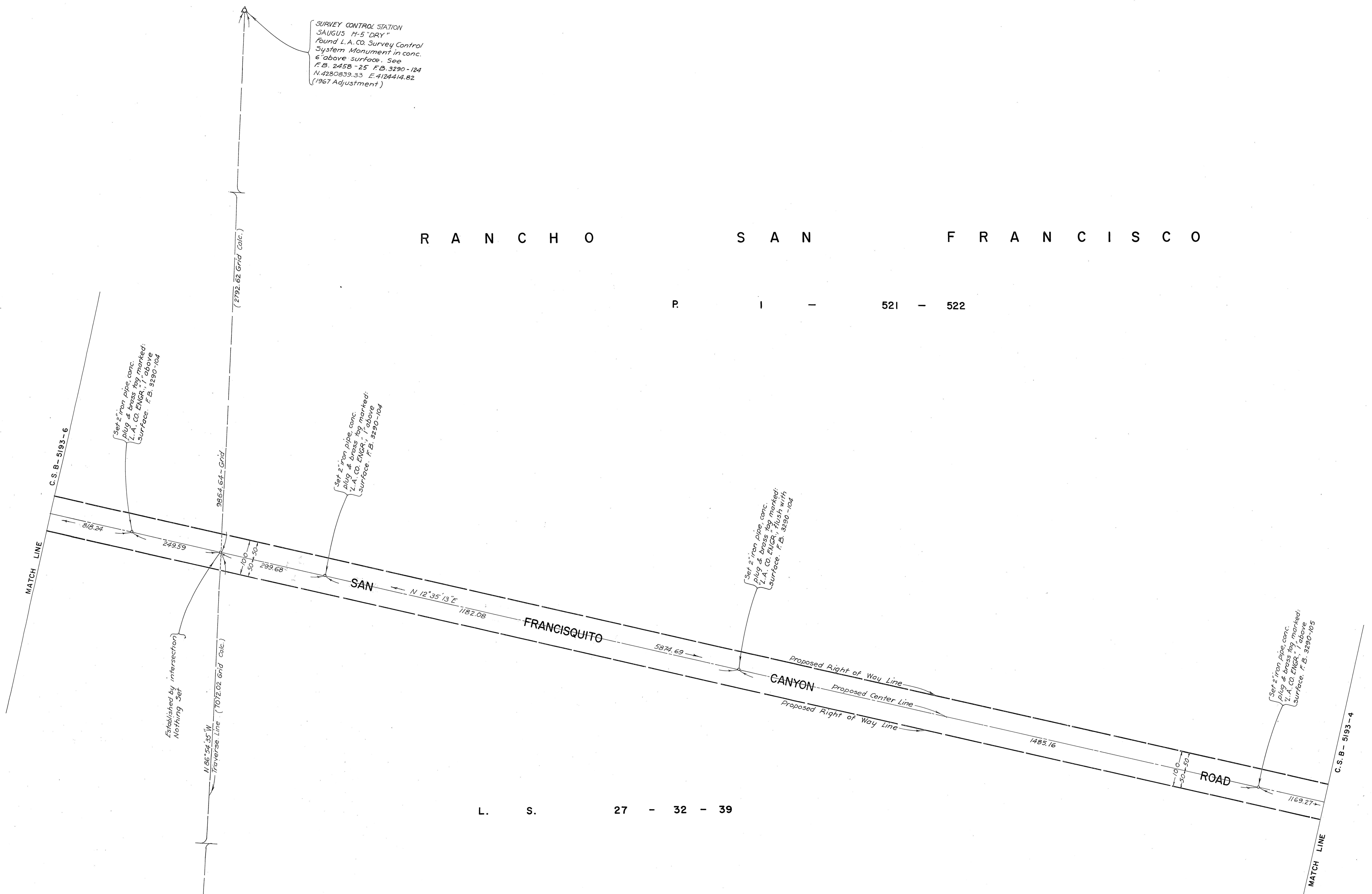
R A N C H O S A N F R A N C I S C O

P I - 521 - 522

L. S. 27 - 32 - 39

SURVEY CONTROL STATION  
SAUGUS H-5 "DRY"  
Found L.A. CO. Survey Control  
System Monument in conc.  
6' above surface. See  
F.B. 2458-25 F.B. 3290-124  
N.4280939.35 E.4124414.82  
(1967 Adjustment)

SURVEY CONTROL STATION  
SAUGUS D-5 "LONG"  
Found L.A. CO. Survey Control  
System Monument in conc.  
12' above surface. See  
F.B. 2459-25 F.B. 3290-124  
N.4281371.15 E.4114564.53  
(1967 Adjustment)



COUNTY OF LOS ANGELES DEPARTMENT OF COUNTY ENGINEER HARVEY T. BRANDT—COUNTY ENGINEER PREPARED BY SURVEY DIVISION GEORGE J. FRANCISCHI—DIVISION ENGINEER SURVEYED BY <u>PURKHOLDER</u> CHECKED BY <u>T. ABE</u> DRAWN BY <u>E. NISHIYAMA</u> <u>F. GUILLERMO</u>	ALIGNMENT MAP OF <b>SAN FRANCISQUITO CANYON ROAD</b> FROM <b>MAGIC MOUNTAIN PARKWAY</b> TO <b>RYE CANYON ROAD</b> BASIS OF BEARINGS CALIFORNIA COORDINATE SYSTEM, ZONE 7		COUNTY SURVEYOR'S MAP NO. <b>B-5193</b> SHEET 5 OF 6 SHEETS FILED: <u>April 19, 1971</u> <u>Walter Chace</u> DEPUTY SURVEYED <b>APRIL - JULY 1971</b> REFERENCE F. B. 3290 JOB NUMBER 003625 INDEX MAP NO. 264-117 B 77	REVISION NO. BY DATE
	COUNTY SURVEYOR'S MAP NO. <b>B-5193</b> SHEET 5 OF 6 SHEETS FILED: <u>April 19, 1971</u> <u>Walter Chace</u> DEPUTY SURVEYED <b>APRIL - JULY 1971</b> REFERENCE F. B. 3290 JOB NUMBER 003625 INDEX MAP NO. 264-117 B 77			REVISION NO. BY DATE

C 2 B-2103-2

