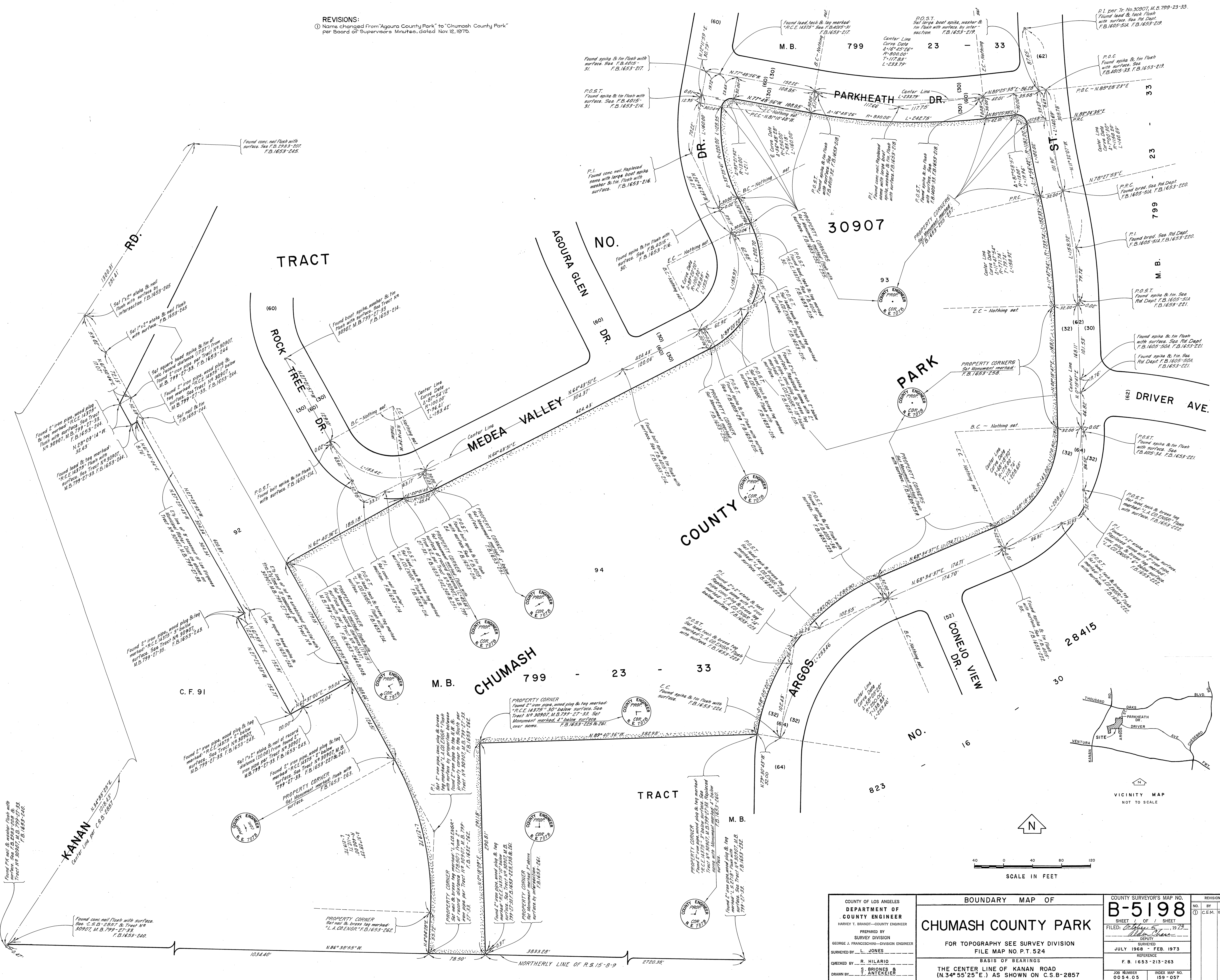


REVISIONS:  
① Name changed from "Agoura County Park" to "Chumash County Park" per Board of Supervisors Minutes, dated Nov. 12, 1975.



COUNTY OF LOS ANGELES DEPARTMENT OF COUNTY ENGINEER HARVEY T. BRANDT - COUNTY ENGINEER PREPARED BY SURVEY DIVISION GEORGE J. FRANCIS - DIVISION ENGINEER SURVEYED BY L. JONES CHECKED BY R. HILARIO DRAWN BY S. BRIONES & T. WINTERER	BOUNDARY MAP OF <b>CHUMASH COUNTY PARK</b> FOR TOPOGRAPHY SEE SURVEY DIVISION FILE MAP NO. P.T. 524		COUNTY SURVEYOR'S MAP NO. <b>B-5198</b> SHEET 1 OF 1 SHEET FILED: <i>William Jones</i> 1975 DEPUTY <i>William Jones</i> JULY 1968 - FEB. 1973 REFERENCE F. B. 1653-213-263	REVISION NO. BY DATE ① C.E.M. 12/1/75
	THE CENTER LINE OF KAHAN ROAD (N. 34° 55' 25" E.) AS SHOWN ON C.S.B. 2857		BASIS OF BEARINGS F. B. 1653-213-263 JOB NUMBER 0054.05 INDEX MAP NO. 159-057	