

SURVEY CONTROL STATION LA BREA C-1
 Found L.A. CO. Survey Control System Monument flush with surface
 See F.B. 948-133, 134
 F.B. 3903-42
 N. 4, 111, 952.75
 E. 4, 324, 262.37 } 1968 Adjustment

SURVEY CONTROL STATION LA BREA B-1
 Found L.A. CO. Survey Control System Monument flush with surface. See F.B. 948-131, 132
 N. 4, 111, 812.95
 E. 4, 321, 014.59 } 1968 Adjustment

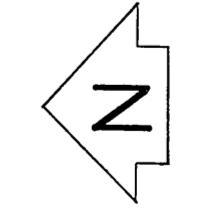
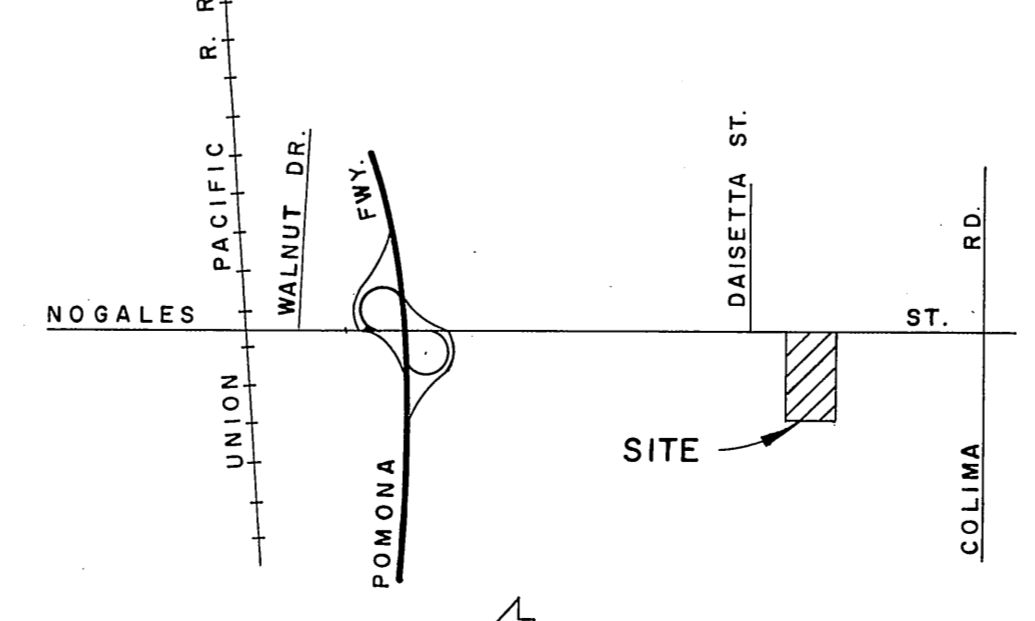
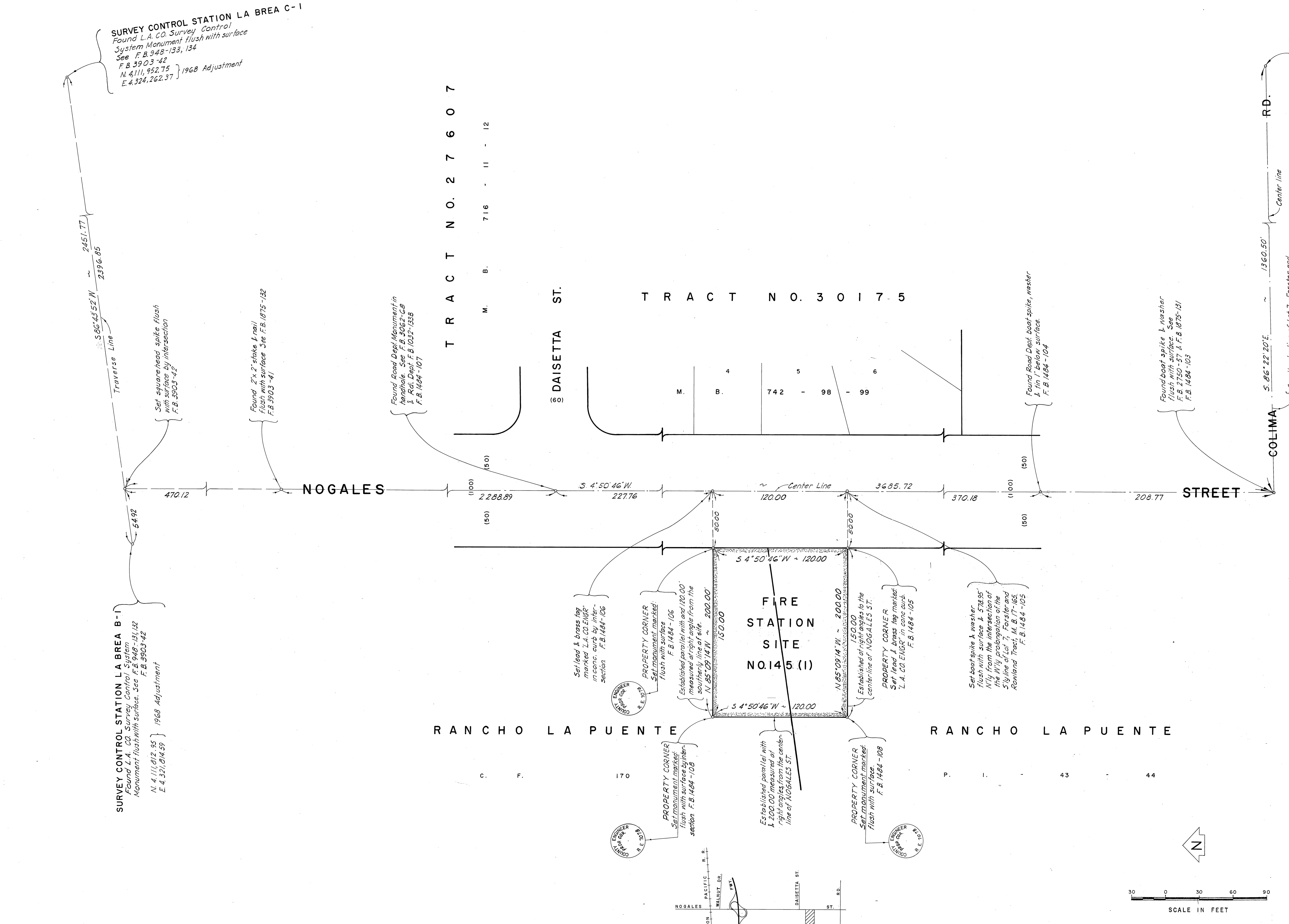
A 3/4" iron pipe, conc. plug & nail 14" below surface
 See F.B. 1871-17, F.B. 1875-131 & F.B. 2750-59

T R A C T N O . 2 7 6 0 7

T R A C T N O . 3 0 1 7 5

R A N C H O L A P U E N T E

R A N C H O L A P U E N T E



SCALE IN FEET

COUNTY OF LOS ANGELES
 DEPARTMENT OF
 COUNTY ENGINEER
 HARVEY T. BRANDT—COUNTY ENGINEER
 PREPARED BY
 SURVEY DIVISION
 GEORGE J. FRANCESCHINI—DIVISION ENGINEER
 SURVEYED BY W.A. RICHARDS
 CHECKED BY J. G. RANDALL
 DRAWN BY R. MANOR

BOUNDARY MAP OF
FIRE STATION SITE NO. 145 (I)
ROWLAND HEIGHTS
 FOR TOPOGRAPHY SEE SURVEY DIVISION
 FILE MAP P.T. J-83
 BASIS OF BEARINGS
 CALIFORNIA COORDINATE SYSTEM ZONE 7

COUNTY SURVEYOR'S MAP NO. B-5200		REVISION
SHEET 1 OF 1 SHEET		NO. BY DATE
FILED: <u>George J. Franceschini</u> 1973 MAY 1973 DEPUTY		
SURVEYED MAY 1973		
REFERENCE F.B. 1484 - 103 - 108 F.B. 3903 - 41 - 42		
JOB NUMBER 0738.13	INDEX MAP NO. 099 - 317	