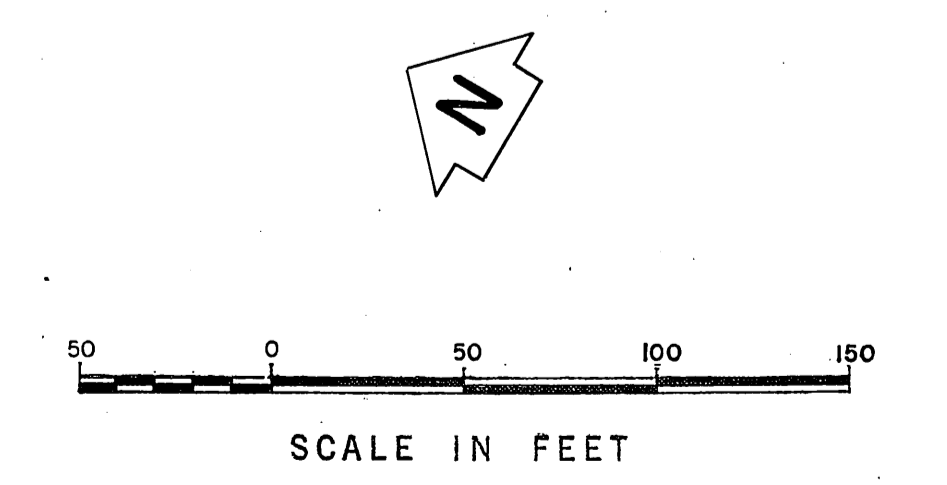
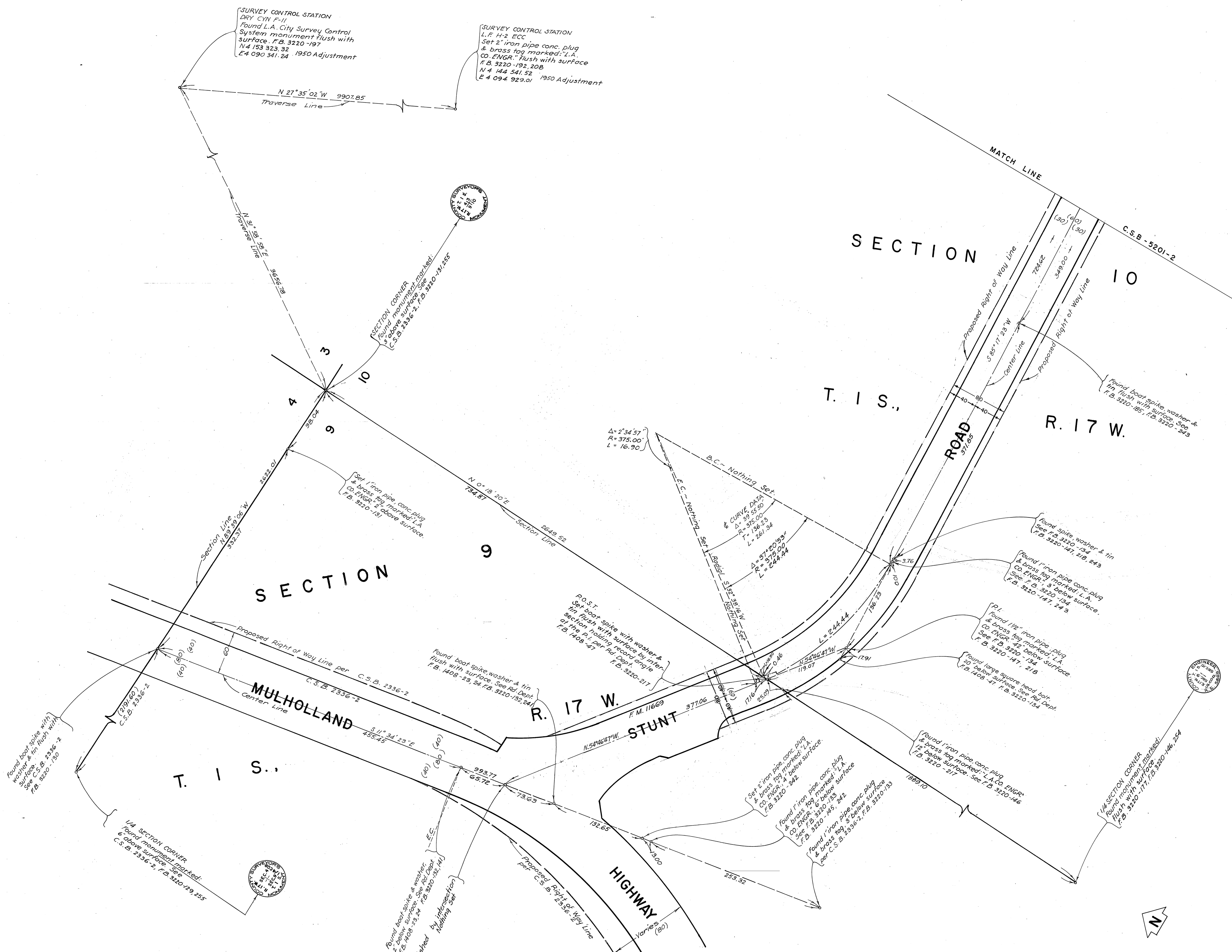


Bayview Parkway removed per  
I.E.C. Minutes date 3-1-79... 3-291-B.G.  
Approved by: *[Signature]* 3-4-91



COUNTY OF LOS ANGELES DEPARTMENT OF COUNTY ENGINEER HARVEY T. BRANDY—COUNTY ENGINEER PREPARED BY SURVEY DIVISION GEORGE J. FRANCESCHINI—DIVISION ENGINEER SURVEYED BY W.J. VOGEL, R.C. DALE CHECKED BY H. HOLMAN T. ABE E. NISHIYAMA DRAWN BY F. GUILLERMO	ALIGNMENT MAP OF <b>BAYVIEW PARKWAY</b> FROM <b>RED ROCK CANYON PARKWAY</b> TO <b>MULHOLLAND HIGHWAY</b> BASIS OF BEARINGS CALIFORNIA COORDINATE SYSTEM, ZONE 7		COUNTY SURVEYOR'S MAP NO. <b>B-5201</b> SHEET 2 OF 3 SHEETS FILED: <i>[Signature]</i> , 1973 CITY SURVEYED JAN. 1969 — AUG. 1970 REFERENCE F. B. - 3220 JOB NUMBER 009635 INDEX MAP NO. 144-077	REVISION NO. BY DATE 1 BY 3-2-91
	COUNTY ENGINEER			NO. BY DATE 1 BY 3-2-91
	DIVISION ENGINEER			NO. BY DATE 1 BY 3-2-91
	COUNTY ENGINEER			NO. BY DATE 1 BY 3-2-91



Found boot spike with washer & tin flush with surface. See F.B. 3236-2, F.B. 3220-130

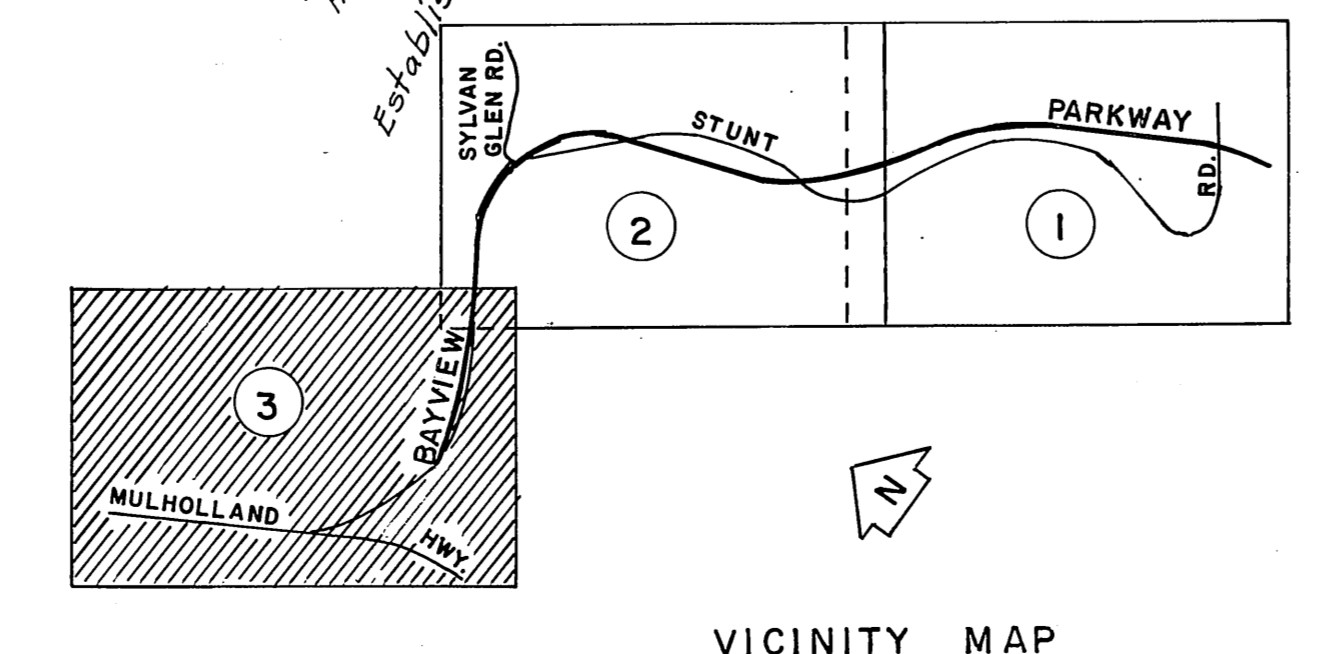
1/4 SECTION CORNER. Found monument marked. 6 above surface. See F.B. 3236-2, F.B. 3220-129, 235

Set 1" iron pipe conc. plug & brass tag marked L.A. Co. ENGR. flush with surface. See F.B. 3220-131, 134, 135

Set 1" iron pipe conc. plug & brass tag marked L.A. Co. ENGR. flush with surface. See F.B. 3220-131, 134, 135

Set 1" iron pipe conc. plug & brass tag marked L.A. Co. ENGR. flush with surface. See F.B. 3220-131, 134, 135

Set 1" iron pipe conc. plug & brass tag marked L.A. Co. ENGR. flush with surface. See F.B. 3220-131, 134, 135



REVISION:  
NOTE:  
1. Alignment revised per I.E.C. Minutes of May 29, 1969  
2. Bayview Parkway removed per I.E.C. Minutes date 3-1-70 - 3-2-71, 8-9 Approved by: 3-4-71

COUNTY OF LOS ANGELES DEPARTMENT OF COUNTY ENGINEER HARVEY T. BRANDT—COUNTY ENGINEER		ALIGNMENT MAP OF <b>BAYVIEW PARKWAY</b> FROM <b>RED ROCK CANYON PARKWAY</b> TO <b>MULHOLLAND HIGHWAY</b> BASIS OF BEARINGS CALIFORNIA COORDINATE SYSTEM, ZONE 7		COUNTY SURVEYOR'S MAP NO. <b>B-5201</b> SHEET 3 OF 3 SHEETS FILED: August 19 1970 SURVEYED JAN. 1969 - AUG. 1970 REFERENCE F. B. - 3220 JOB NUMBER 0 9 6 . 3 5      INDEX MAP NO. 1 4 4 - 0 7 7		REVISION NO. BY DATE 1. A.M. 9-18-80 2. B.G. 3-2-81	
PREPARED BY SURVEY DIVISION GEORGE J. FRANCESCHINI—DIVISION ENGINEER SURVEYED BY W. J. VOGEL, R. C. DALE H. HOLMAN T. ABE E. NISHIYAMA F. GUILLERMO							