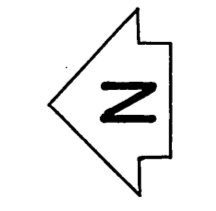
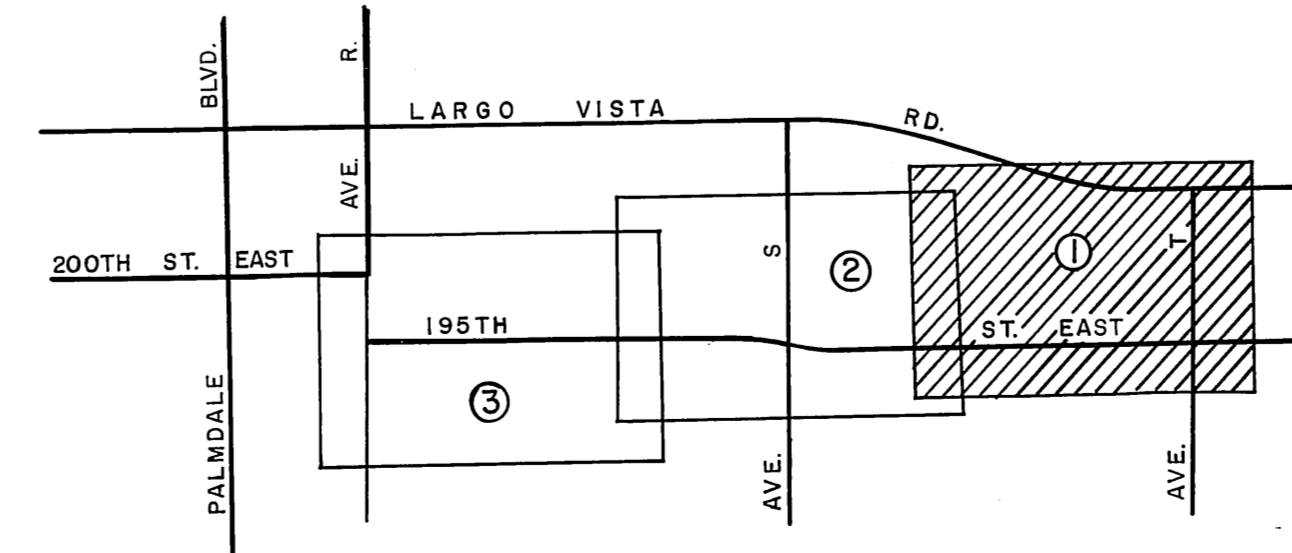
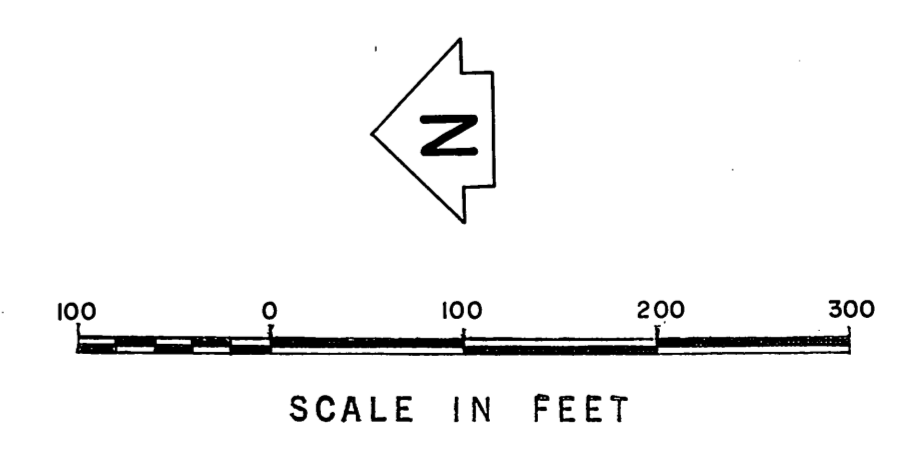
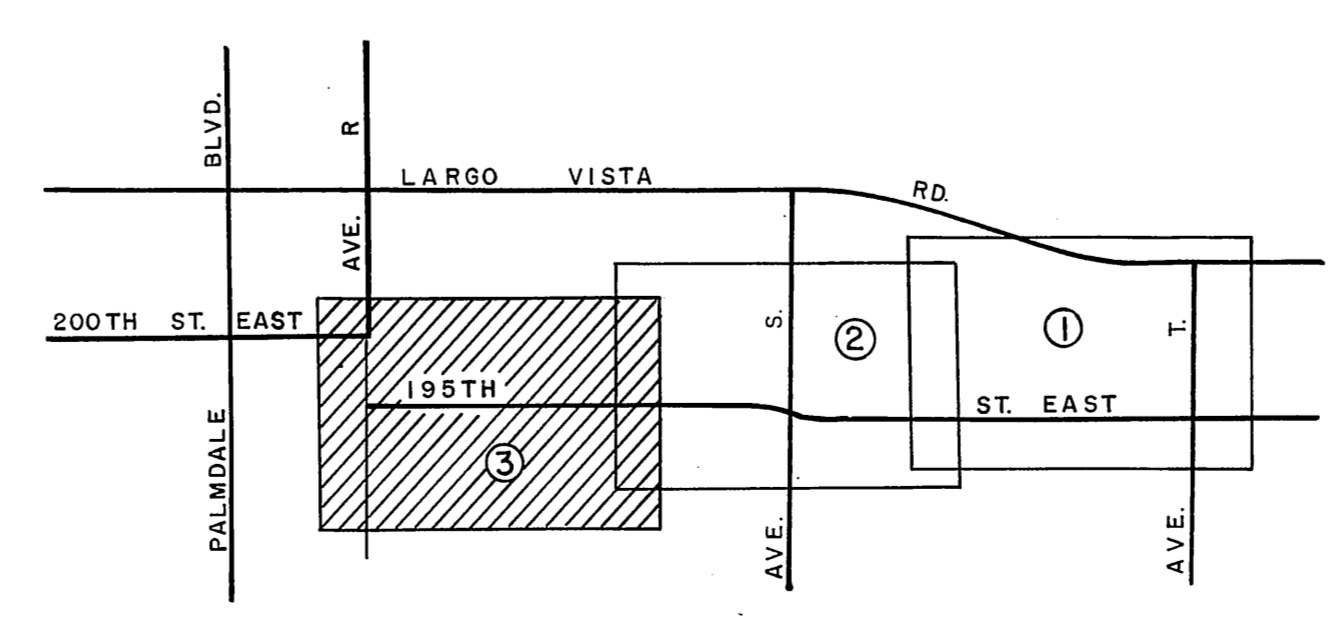
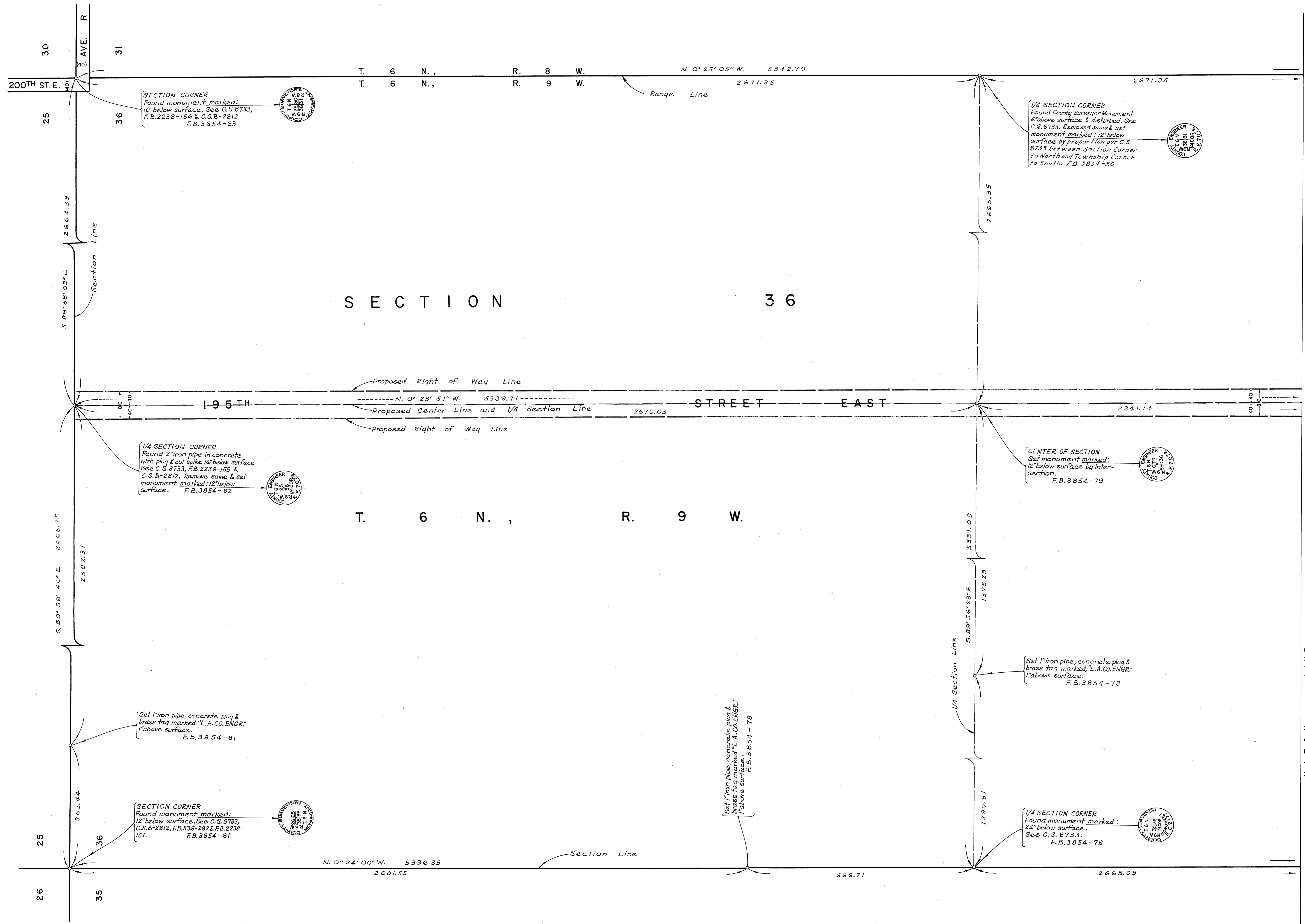


REVISIONS:
 ① Bearing shown for Ave. T corrected.



SCALE IN FEET
 0 100 200 300

COUNTY OF LOS ANGELES DEPARTMENT OF COUNTY ENGINEER HARVEY T. BRANDT—COUNTY ENGINEER PREPARED BY SURVEY DIVISION GEORGE J. FRANCESCINI—DIVISION ENGINEER SURVEYED BY J. MENDONCA D. SAPPPELL CHECKED BY R. G. BOWERS DRAWN BY BH. TABATA, S. NUNEZ	ALIGNMENT MAP OF 195TH STREET EAST FROM AVENUE T TO AVENUE R		COUNTY SURVEYOR'S MAP NO. B-5204	REVISION NO. BY DATE ① J.S. 7-11-74
	BASIS OF BEARINGS THE N'LY LINE OF THE W'LY 1/2 OF SECTION 36, T. 6 N. R. 9 W. (S. 89° 58' 40" E.) AS SHOWN ON C.S.B-2812.		SHEET 1 OF 3 SHEETS FILED: <i>October 5, 1972</i> SURVEYED JANUARY 1972	
			REFERENCE F. B. 3854 - 66 - 83 JOB NUMBER 0 098.40	INDEX MAP NO. 67



COUNTY OF LOS ANGELES DEPARTMENT OF COUNTY ENGINEER <small>HARVEY T. BRANDT—COUNTY ENGINEER</small> PREPARED BY SURVEY DIVISION <small>GEORGE J. FRANCESCHINI—DIVISION ENGINEER</small> SURVEYED BY <u>J. MENDONCA</u> CHECKED BY <u>R.C. BOWERS</u> DRAWN BY <u>B.H. TABATA, B. NUNEZ</u>	ALIGNMENT MAP OF 195TH STREET EAST FROM AVENUE T TO AVENUE R		COUNTY SURVEYOR'S MAP NO. B-5204	REVISION NO. BY DATE
	BASIS OF BEARINGS THE N'LY LINE OF THE W'LY 1/2 OF SECTION 36, T.6N., R.9W. (S.89°58'40"E.) AS SHOWN ON C.S.B. 2812.		SHEET 3 OF 3 SHEETS FILED: <u>Alfonso S.</u> , 19 22 <small>DEPUTY</small> SURVEYED JANUARY 1972	
			REFERENCE F.B. 3854-66-83	
			JOB NUMBER 0098.40	INDEX MAP NO. 67