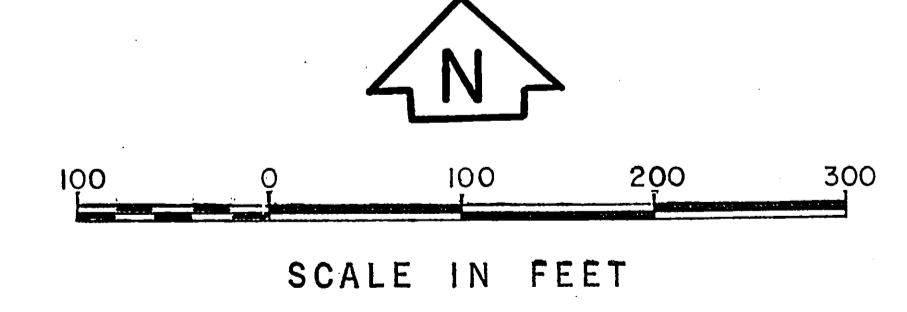
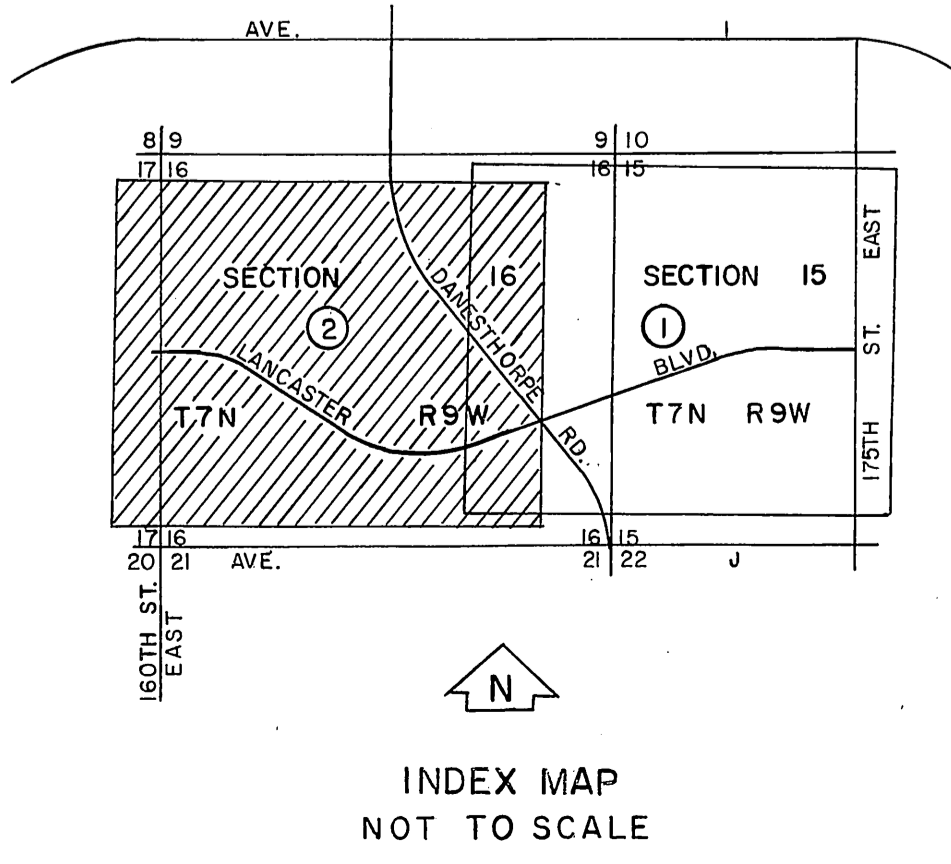
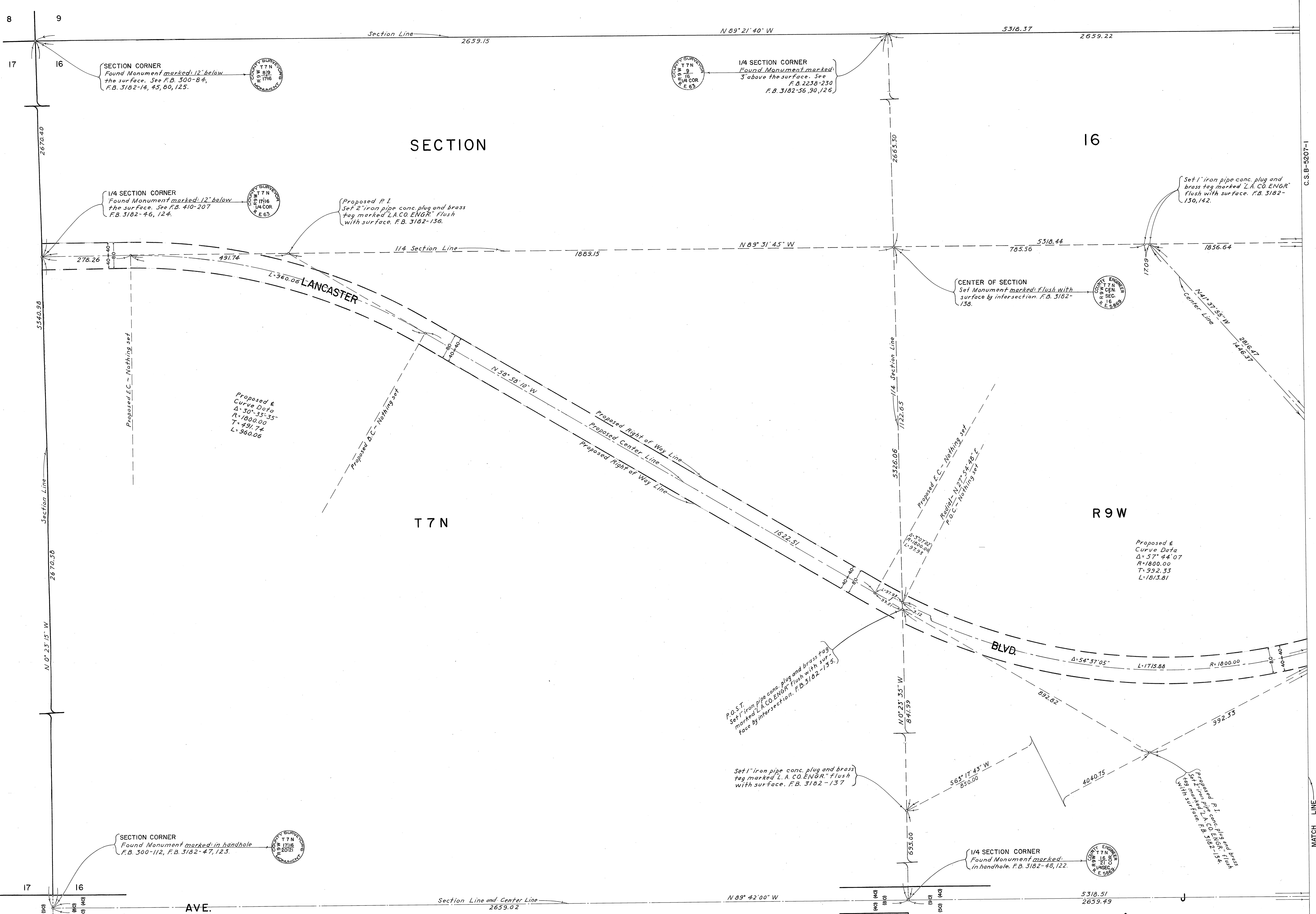


COUNTY OF LOS ANGELES DEPARTMENT OF COUNTY ENGINEER HARVEY K. BRANDT—COUNTY ENGINEER PREPARED BY SURVEY DIVISION GEORGE J. FRANCESCHINI—DIVISION ENGINEER SURVEYED BY J.A.P./E.B.C.E. D. SAPPPELL CHECKED BY J.A. EDMONDSON DRAWN BY R. MUNNEZ	ALIGNMENT MAP OF <b>LANCASTER BLVD.</b> FROM <b>175TH ST. EAST</b> TO <b>160TH ST. EAST</b> BASIS OF BEARINGS THE EAST LINE OF SECTION 16, T7N, R9W, (N 0°23'50" W) PER C.S.B. 2806-8		COUNTY SURVEYOR'S MAP NO. <b>B-5207</b> SHEET 1 OF 2 SHEETS FILED: <i>[Signature]</i> , 1974 DEPUTY SURVEYED AUG. 1970 TO JAN. 1971 REFERENCE F.B. 3182-119-143 JOB NUMBER 0075.52	REVISION NO. BY DATE



COUNTY OF LOS ANGELES DEPARTMENT OF COUNTY ENGINEER HARVEY T. BRANDY—COUNTY ENGINEER PREPARED BY SURVEY DIVISION GEORGE J. FRANCESCO—DIVISION ENGINEER SURVEYED BY J. PIERCE CHECKED BY W.A. EDWARDS DRAWN BY B. NUÑEZ	ALIGNMENT MAP OF <b>LANCASTER BLVD.</b> FROM 175TH ST. EAST TO 160TH ST. EAST BASIS OF BEARINGS THE EAST LINE OF SECTION 16, T7N, R9W, (N0°23'50" W) PER C.S.B. 2806-8	COUNTY SURVEYOR'S MAP NO. <b>B-5207</b> SHEET 2 OF 2 SHEETS FILED: January 3, 1971 DEPUTY <i>R. J. McCall</i> SURVEYED AUG. 1970 TO JAN 1971 REFERENCE F.B. 3182-119-143	REVISION NO. BY DATE
		JOB NUMBER 0075.52 INDEX MAP NO. 68.69	