

SECTION

T. 7 N.,

16

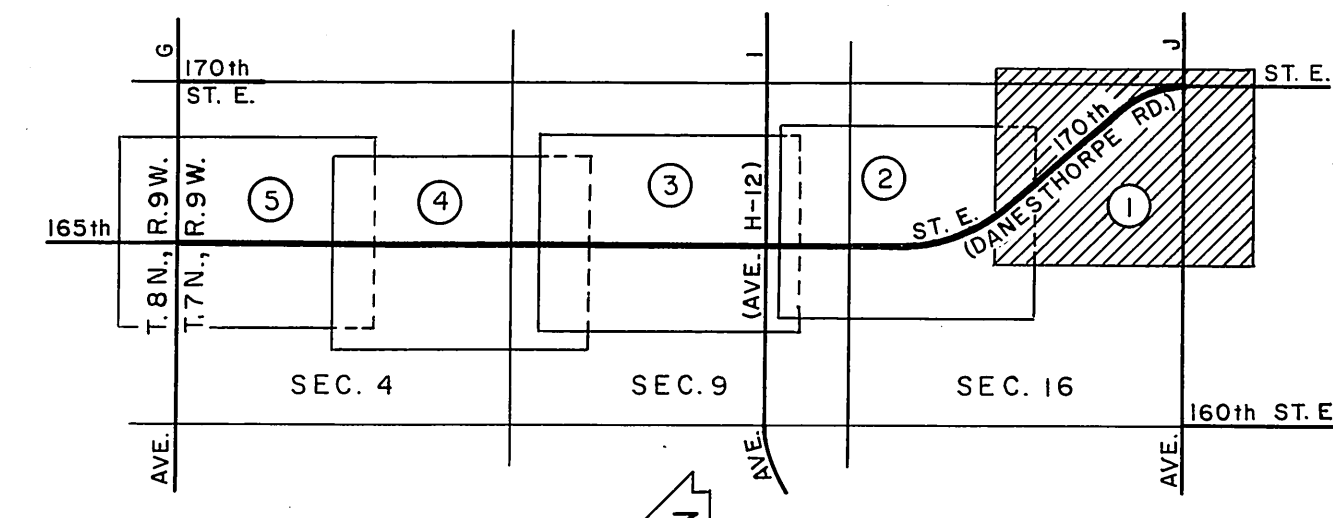
R. 9 W.

21

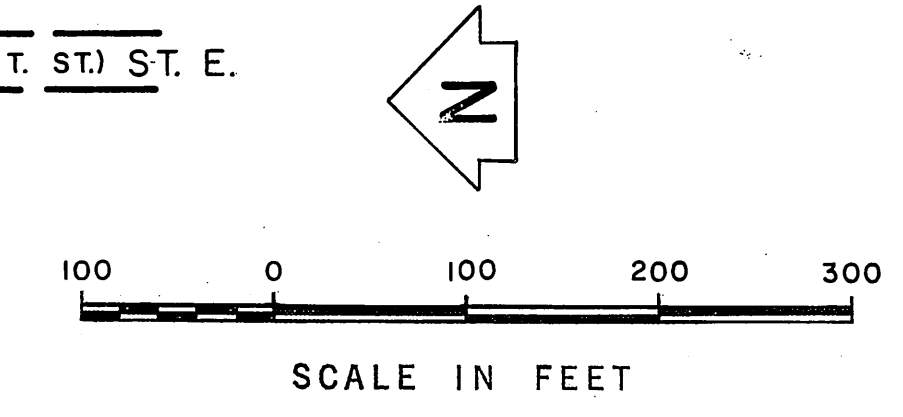
R. 9 W.

SECTION

T. 7 N.,



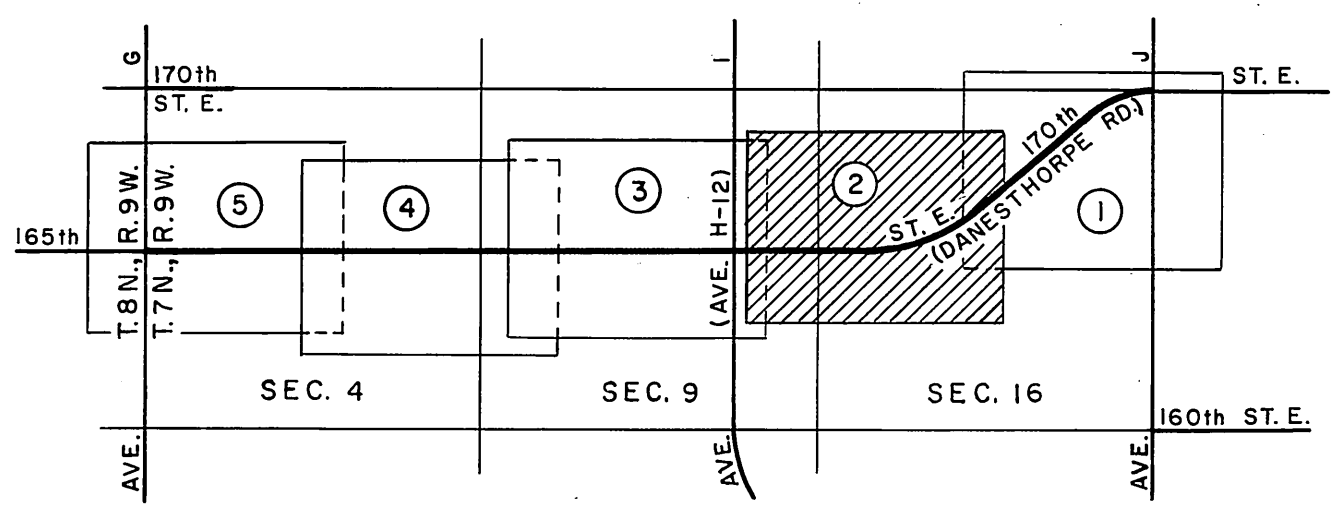
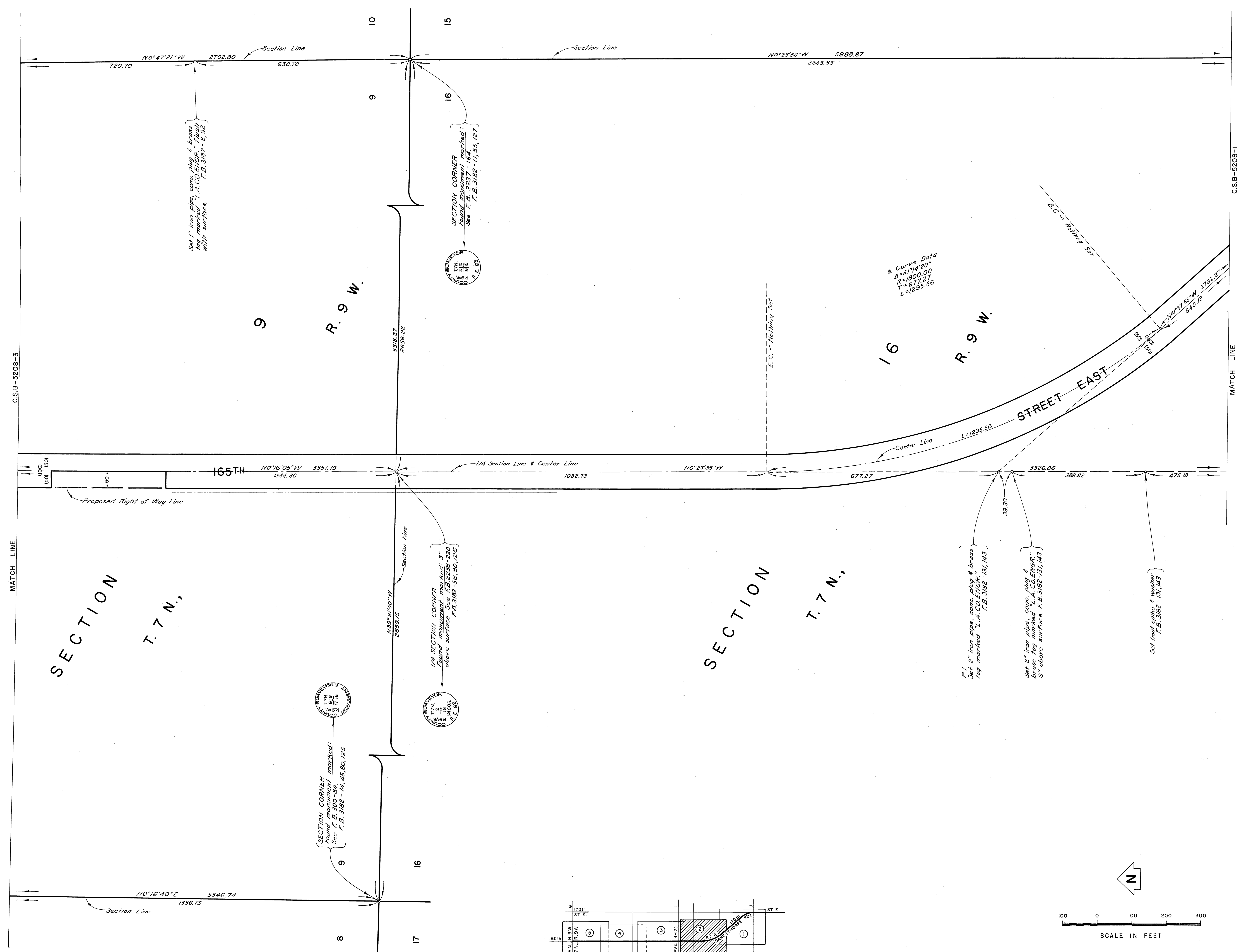
INDEX MAP NOT TO SCALE



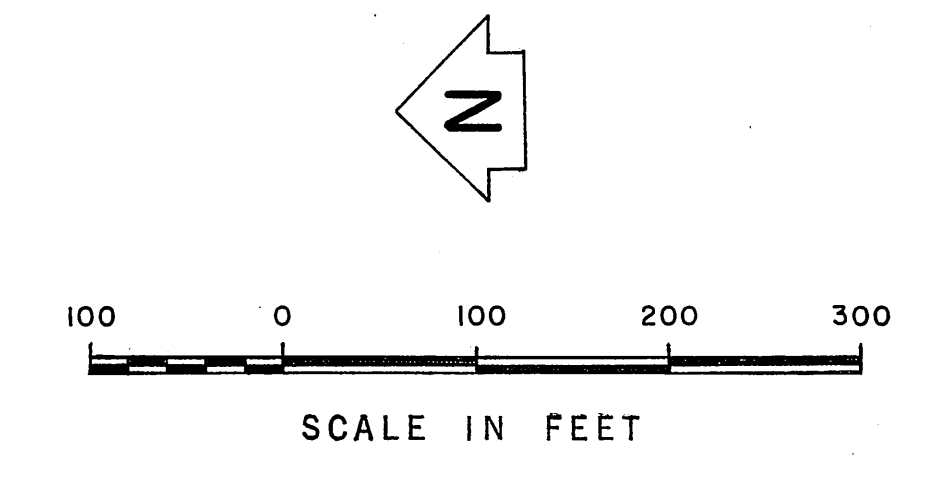
COUNTY SURVEYOR'S MAP NO.		REVISION	
<b>B-5208</b>		NO.	BY DATE
SHEET 1 OF 5 SHEETS			
FILED: <i>January 3, 1971</i>			
<i>B. J. HANCOCK</i>			
DEPUTY			
SURVEYED			
AUG. 1970 TO JAN. 1971			
REFERENCE			
F. B. 3182-119-159			
JOB NUMBER		INDEX MAP NO.	
0099.19 & 0097.71		69	

COUNTY OF LOS ANGELES  
 DEPARTMENT OF  
 COUNTY ENGINEER  
 HARVEY T. BRANDT—COUNTY ENGINEER  
 PREPARED BY  
 SURVEY DIVISION  
 GEORGE J. FRANCESCHINI—DIVISION ENGINEER  
 SURVEYED BY J. C. PIERCE  
 D. SAPPPELL  
 CHECKED BY W. A. EDMONDSON  
 J. F. MERRILL  
 DRAWN BY B. NUNEZ

ALIGNMENT MAP OF  
**170TH-165TH STREET EAST**  
 FROM AVENUE J TO AVENUE G  
 BASIS OF BEARINGS  
 THE EAST LINE OF SECTION 16, T.7N., R.9W.,  
 (N0°23'50"W.) AS SHOWN ON C.S.B-2806-8



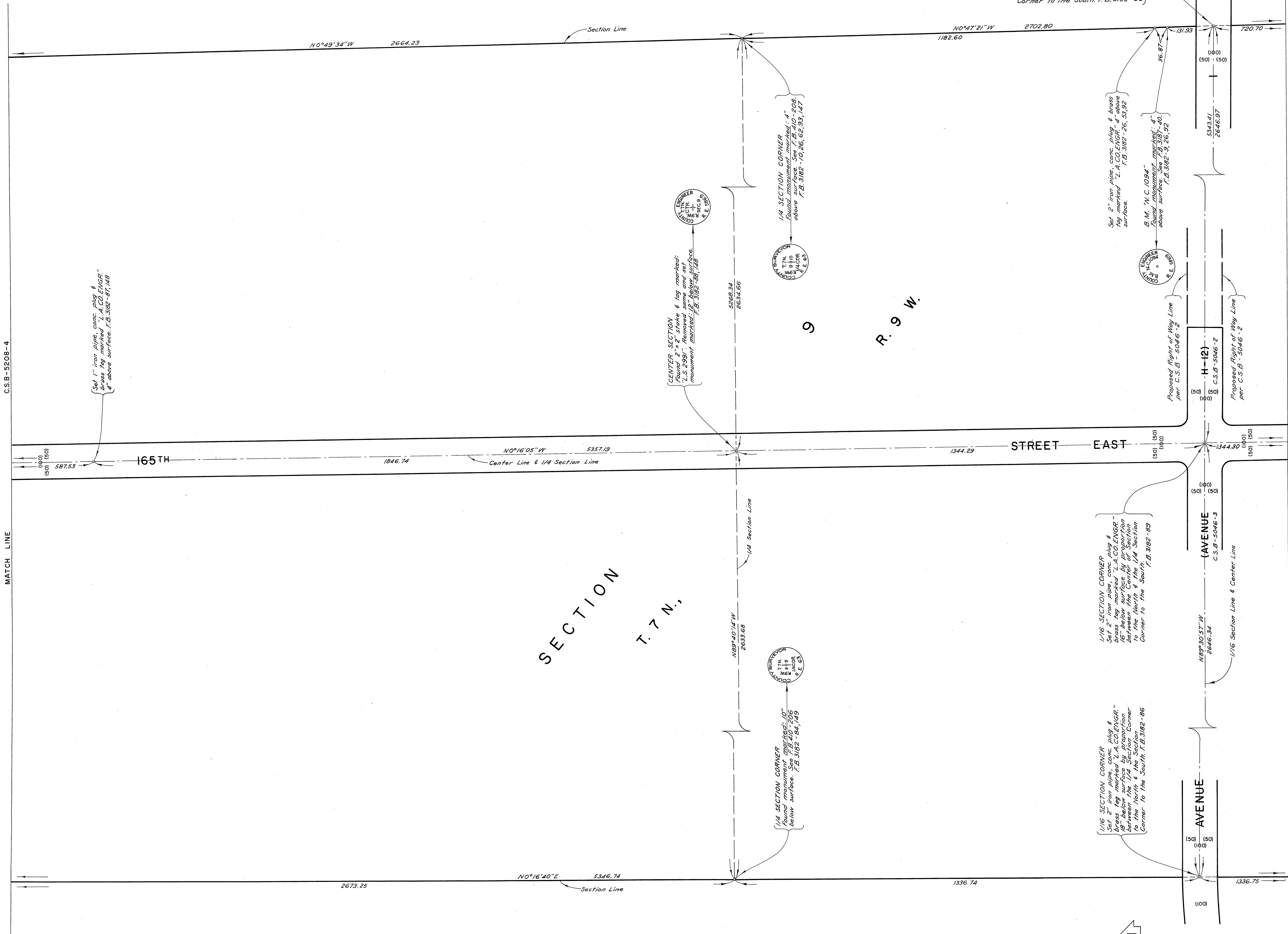
INDEX MAP NOT TO SCALE



COUNTY OF LOS ANGELES DEPARTMENT OF COUNTY ENGINEER PREPARED BY HARVEY T. BRANDT—COUNTY ENGINEER SURVEY DIVISION GEORGE J. FRANCESCINI—DIVISION ENGINEER SURVEYED BY J. C. PIERCE D. SAPPELL CHECKED BY W. A. EDMONDSON J. F. MERRILL DRAWN BY B. NUNEZ	ALIGNMENT MAP OF <b>170TH-165TH STREET EAST</b> FROM AVENUE J TO AVENUE G		COUNTY SURVEYOR'S MAP NO. <b>B-5208</b> SHEET 2 OF 5 SHEETS FILED: <i>Harvey T. Brandt</i> 19 74 <i>B. J. Mitchell</i> DEPUTY SURVEYED AUG. 1970 TO JAN. 1971 REFERENCE F. B. 3182-119-159 JOB NUMBER INDEX MAP NO. 009519 B 009771 69	REVISION NO. BY DATE
	BASIS OF BEARINGS THE EAST LINE OF SECTION 16, T. 7 N., R. 9 W., (N $0^{\circ}23'50''W$ .) AS SHOWN ON C.S.B.-2806-8			

C.S.B-5208-4

MATCH LINE



Set 1" iron pipe, conc. plug & brass tag marked "L.A. CO. ENGR." 4" above surface. F.B. 3182-87, 148

Set 2" iron pipe, conc. plug & brass tag marked "L.A. CO. ENGR." 4" above surface. F.B. 3182-88, 149

Set 2" iron pipe, conc. plug & brass tag marked "L.A. CO. ENGR." 4" above surface. F.B. 3182-89, 149

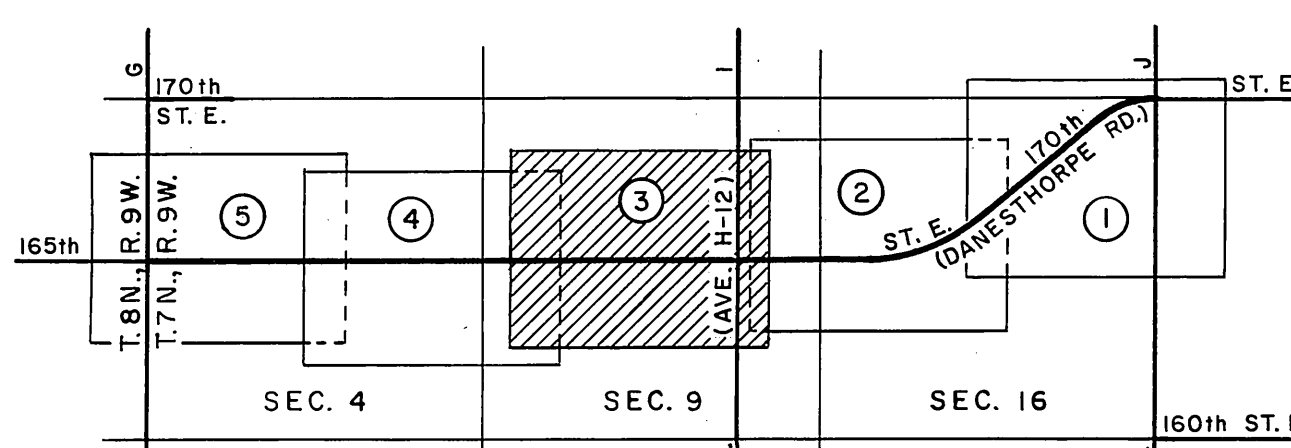
Set 2" iron pipe, conc. plug & brass tag marked "L.A. CO. ENGR." 4" above surface. F.B. 3182-90, 149

1/16 SECTION CORNER  
Set 2" iron pipe, conc. plug & brass tag marked "L.A. CO. ENGR." 16" below surface by proportion between the 1/4 Section Corner to the North & the Section Corner to the South. F.B. 3182-92

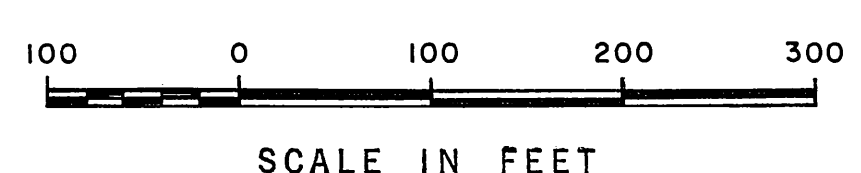
1/16 SECTION CORNER  
Set 2" iron pipe, conc. plug & brass tag marked "L.A. CO. ENGR." 16" below surface by proportion between the 1/4 Section Corner to the North & the 1/4 Section Corner to the South. F.B. 3182-89

1/16 SECTION CORNER  
Set 2" iron pipe, conc. plug & brass tag marked "L.A. CO. ENGR." 16" below surface by proportion between the 1/4 Section Corner to the North & the Section Corner to the South. F.B. 3182-86

SECTION T. 7 N., R. 9 W.



INDEX MAP NOT TO SCALE



COUNTY OF LOS ANGELES  
DEPARTMENT OF COUNTY ENGINEER  
HARVEY T. BRANDT—COUNTY ENGINEER  
PREPARED BY SURVEY DIVISION  
GEORGE J. FRANCESCINI—DIVISION ENGINEER  
SURVEYED BY J. C. PIERCE  
D. SAPPILL  
CHECKED BY W. A. EDMONDSON  
J. F. MERRILL  
DRAWN BY B. NUNEZ

ALIGNMENT MAP OF  
**170TH-165TH STREET EAST**  
FROM AVENUE J TO AVENUE G  
BASIS OF BEARINGS  
THE EAST LINE OF SECTION 16, T.7N., R.9W., (N0°23'50"W) AS SHOWN ON C.S.B-2806-8

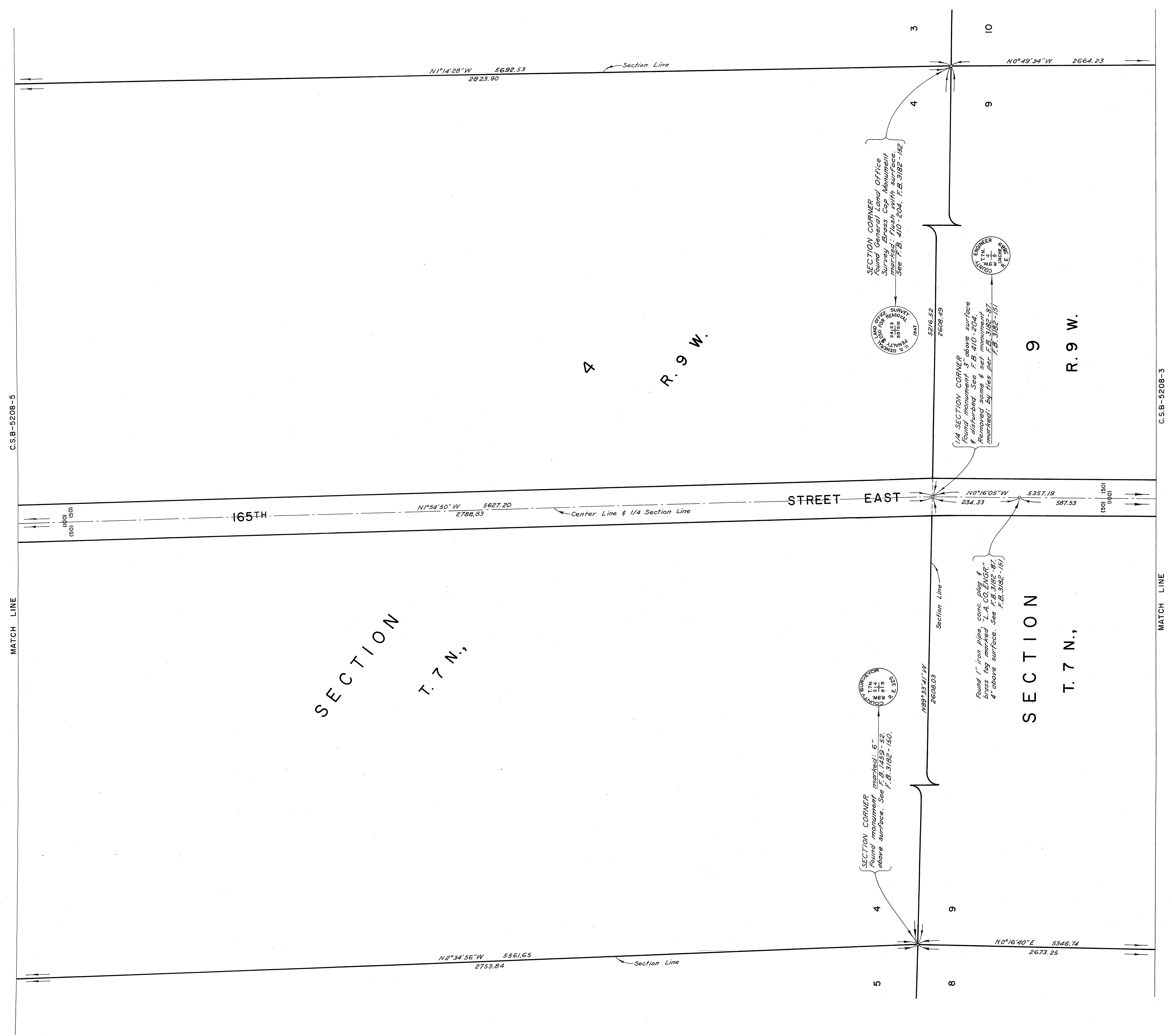
COUNTY SURVEYOR'S MAP NO.  
**B-5208**  
SHEET 3 OF 5 SHEETS  
FILED: *[Signature]* 19 72 E.  
DEPUTY  
AUG. 1970 TO JAN. 1971  
F. B. 3182-119-159  
JOB NUMBER 005519 0087.71 INDEX MAP NO. 69

REVISION		
NO.	BY	DATE

C.S.B-5208-2

MATCH LINE



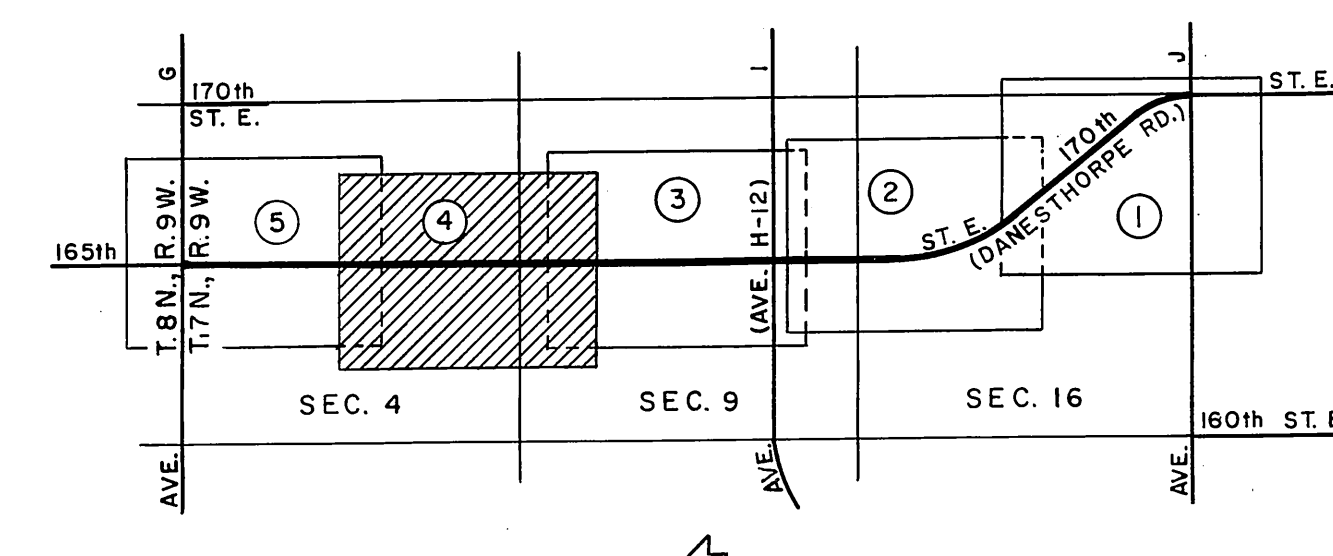


C.S.B-5208-5

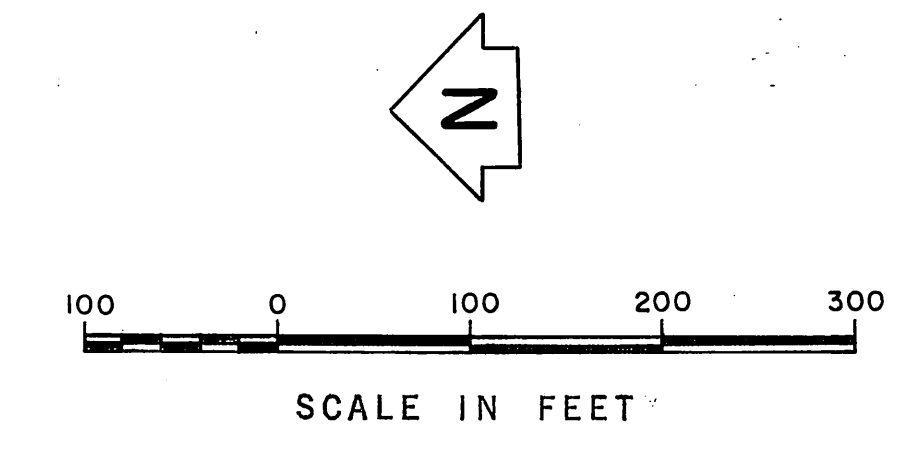
C.S.B-5208-3

SECTION T. 7 N., R. 9 W.

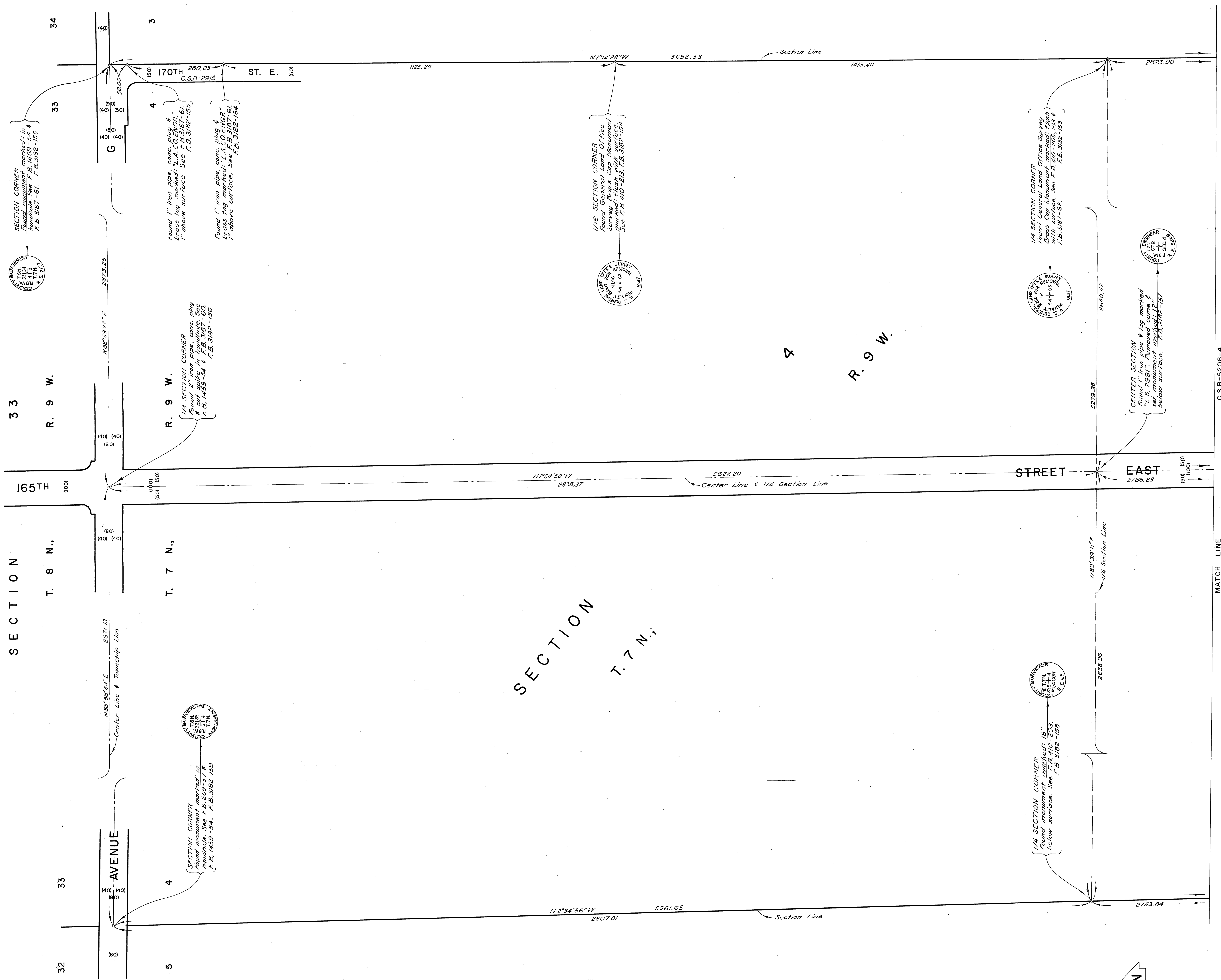
SECTION T. 7 N., R. 9 W.



INDEX MAP NOT TO SCALE

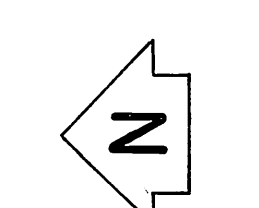
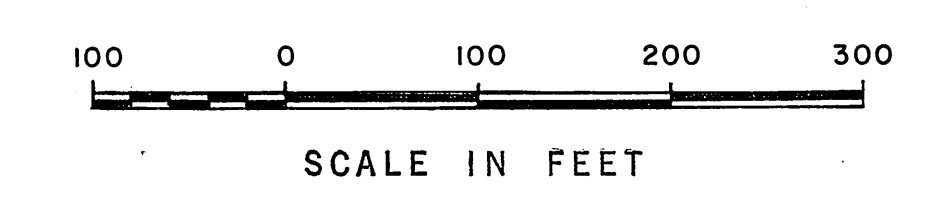
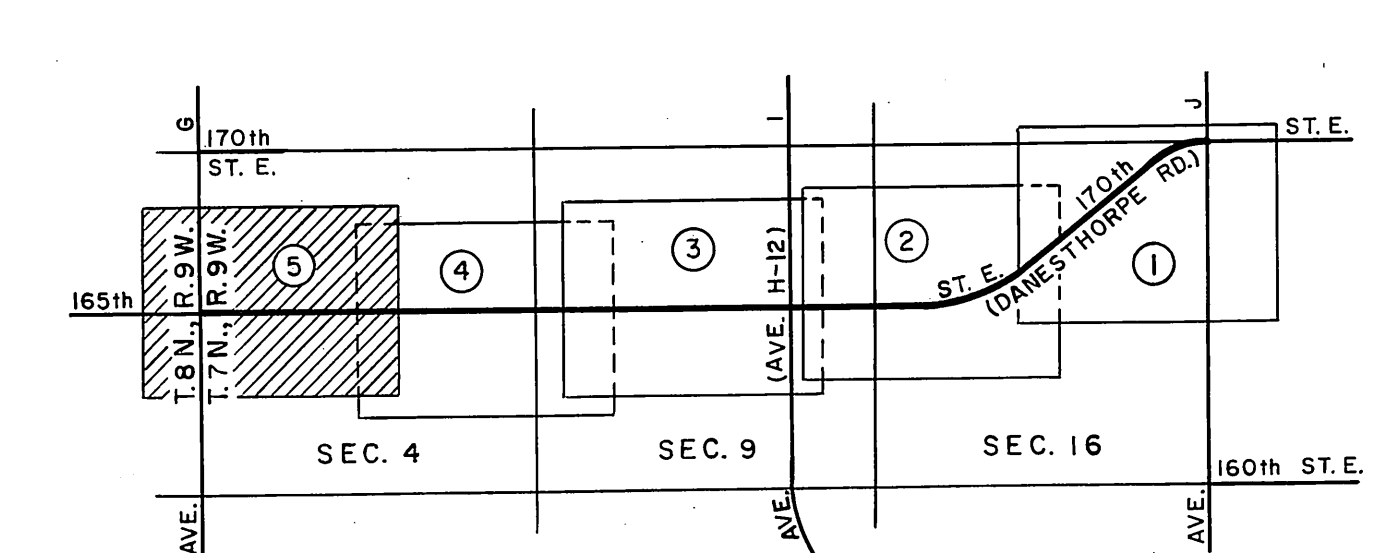


COUNTY OF LOS ANGELES DEPARTMENT OF COUNTY ENGINEER HARVEY T. BRANDT—COUNTY ENGINEER PREPARED BY SURVEY DIVISION GEORGE J. FRANCISCHINI—DIVISION ENGINEER SURVEYED BY J. C. PIERCE D. SAPPPELL CHECKED BY W. A. EDMONDSON J. F. MERRILL DRAWN BY B. NUNEZ	ALIGNMENT MAP OF <b>170TH-165TH STREET EAST</b> FROM AVENUE J TO AVENUE G		COUNTY SURVEYOR'S MAP NO. <b>B-5208</b> SHEET 4 OF 5 SHEETS FILED: <i>Jenssey J</i> , 19 <i>74</i> <i>B. Nunez</i> DEPUTY SURVEYED AUG. 1970 TO JAN. 1971 REFERENCE F. B. 3182-119-159 JOB NUMBER 009519 & 009771 INDEX MAP NO. 59	REVISION NO. BY DATE
	BASIS OF BEARINGS THE EAST LINE OF SECTION 16, T. 7 N., R. 9 W., (N0°23'50"W) AS SHOWN ON C.S.B-2806-8			



SECTION  
T. 8 N.,  
R. 9 W.

SECTION  
T. 7 N.,  
R. 9 W.



COUNTY OF LOS ANGELES DEPARTMENT OF COUNTY ENGINEER HARVEY T. BRANDT—COUNTY ENGINEER PREPARED BY SURVEY DIVISION GEORGE J. FRANCISCHINI—DIVISION ENGINEER SURVEYED BY J. C. PIERCE D. SAPPPELL CHECKED BY W. A. EDMONDSON J. F. MERRILL DRAWN BY B. NUNEZ	ALIGNMENT MAP OF		COUNTY SURVEYOR'S MAP NO.	
	<b>170TH-165TH STREET EAST</b>		<b>B-5208</b>	
	FROM AVENUE J TO AVENUE G		SHEET 5 OF 5 SHEETS	
	BASIS OF BEARINGS		FILED: <i>Harvey T. Brandt</i> 1974	
	THE EAST LINE OF SECTION 16, T.7N., R.9W., (N 0° 23' 50" W) AS SHOWN ON C.S.B-2806-8		AUG. 1970 TO JAN. 1971	
JOB NUMBER 005519 & 009771		F. B. 3182-119-159		
INDEX MAP NO. 69		REVISION		
		NO. BY DATE		