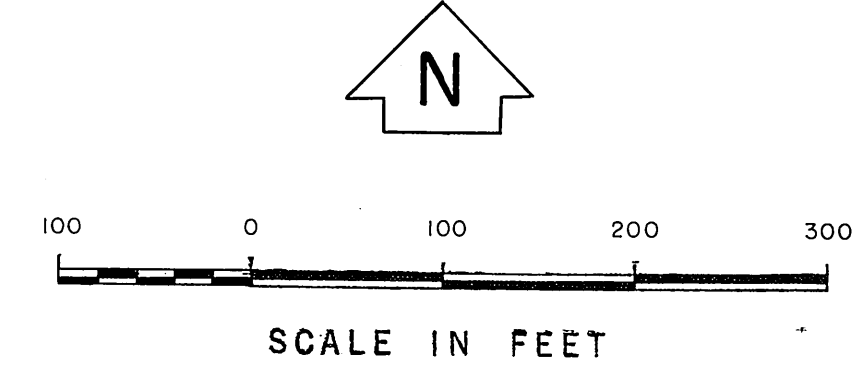
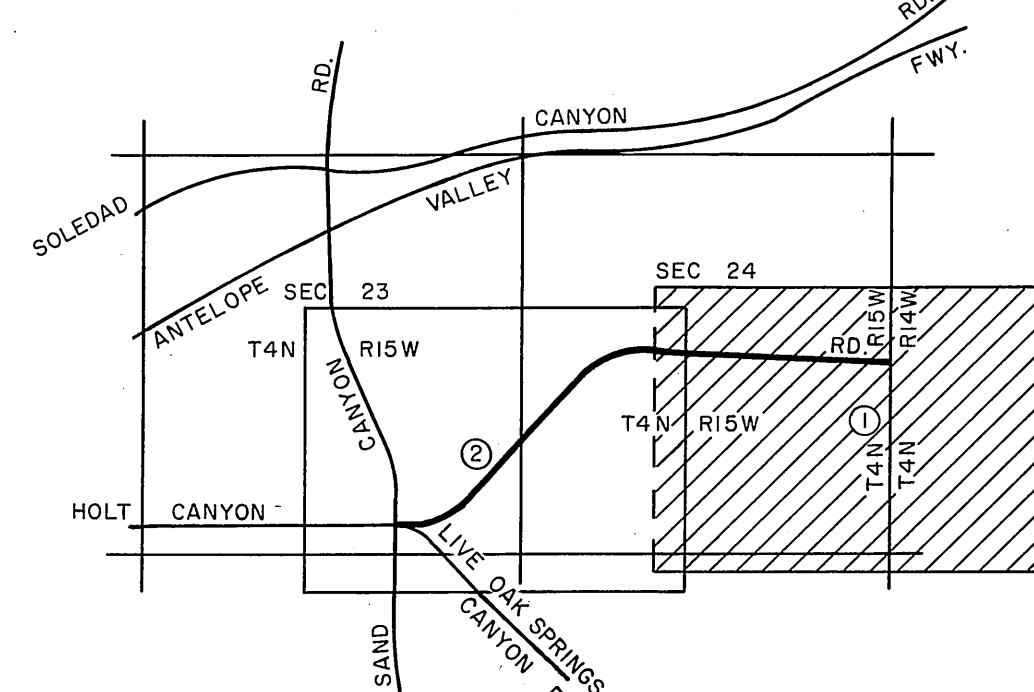


MATCH LINE

C.S.B - 5213-2

SECTION 24
T. 4 N., R. 15 W.

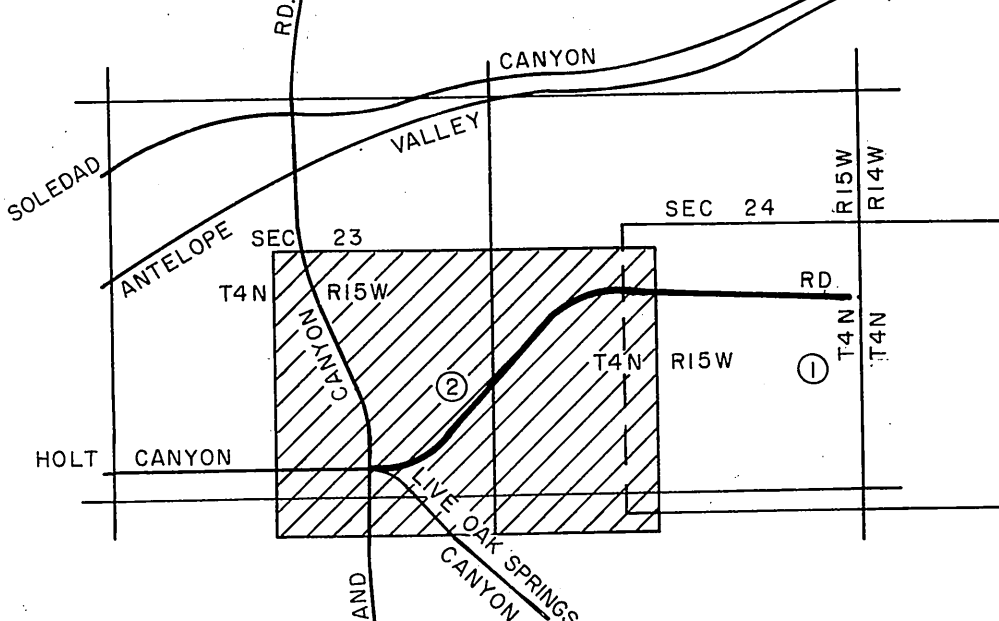
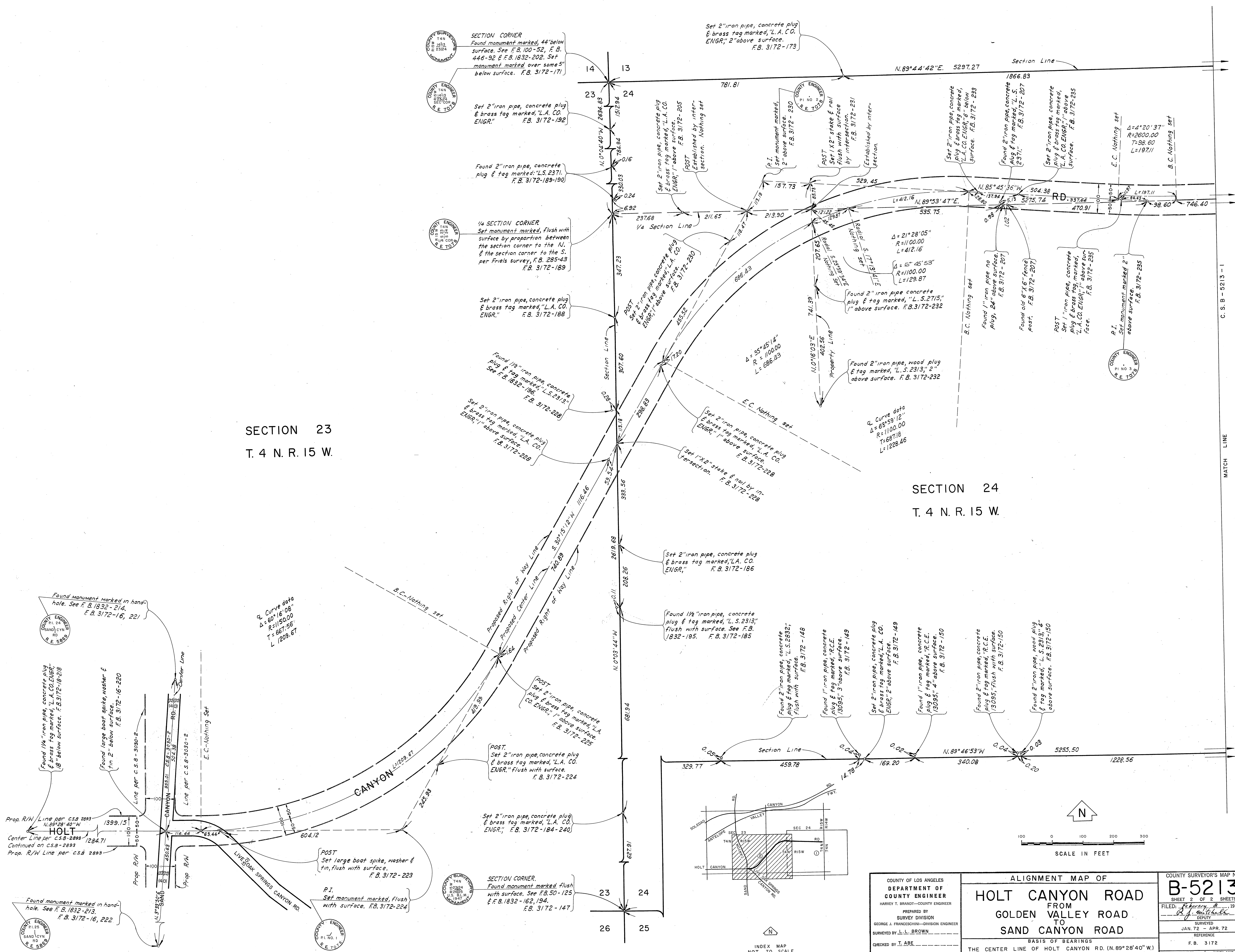
NOTE: ALIGNMENT OF GOLDEN VALLEY RD. THE ALIQUARY HIGHWAY, AS PROPOSED IN THIS PLAN OF THIS MAP IS A SECOND MASTER PLAN OF THE ROAD ON THAT BEING ESTABLISHED AT THE TIME OF THE FILING OF THIS MAP.



COUNTY OF LOS ANGELES DEPARTMENT OF COUNTY ENGINEER HARVEY T. BRANDT—COUNTY ENGINEER PREPARED BY SURVEY DIVISION GEORGE J. FRANCISCHINI—DIVISION ENGINEER SURVEYED BY L. L. BROWN CHECKED BY T. ABE DRAWN BY J. ALFREDO	ALIGNMENT MAP OF HOLT CANYON ROAD FROM GOLDEN VALLEY ROAD TO SAND CANYON ROAD		COUNTY SURVEYOR'S MAP NO. B-5213 SHEET 1 OF 2 SHEETS FILED: February 19, 1972 R. J. WHITE, JR. DEPUTY SURVEYOR JAN. 72 - APR. 72 REFERENCE F. B. 3172	REVISION NO. BY DATE
	BASIS OF BEARINGS THE CENTER LINE OF HOLT CANYON RD. (N. 89° 28' 40" W.) AS SHOWN ON C.S.B - 2893.		JOB NUMBER 0075.99	INDEX MAP NO. 249-157

SECTION 23
T. 4 N. R. 15 W.

SECTION 24
T. 4 N. R. 15 W.



COUNTY OF LOS ANGELES
DEPARTMENT OF
COUNTY ENGINEER
HARVEY T. BRANDT—COUNTY ENGINEER
PREPARED BY
SURVEY DIVISION
GEORGE J. FRANCESCHINI—DIVISION ENGINEER
SURVEYED BY L. L. BROWN
CHECKED BY I. ABE
DRAWN BY J. ALFRED

ALIGNMENT MAP OF
HOLT CANYON ROAD
FROM
GOLDEN VALLEY ROAD
TO
SAND CANYON ROAD
BASIS OF BEARINGS
THE CENTER LINE OF HOLT CANYON RD. (N. 89° 28' 40" W.)
AS SHOWN ON C. S. B - 2893.

COUNTY SURVEYOR'S MAP NO. B-5213		REVISION NO. BY DATE
SHEET 2 OF 2 SHEETS		
FILED February 8 1972 R. J. Mitchell DEPUTY		
SURVEYED JAN. 72 - APR. 72		
REFERENCE F. B. 3172		
JOB NUMBER 0075.99	INDEX MAP NO. 249-157	

C. S. B - 5213 - 1
MATCH LINE