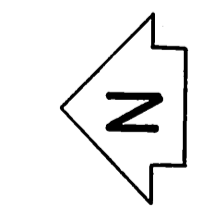
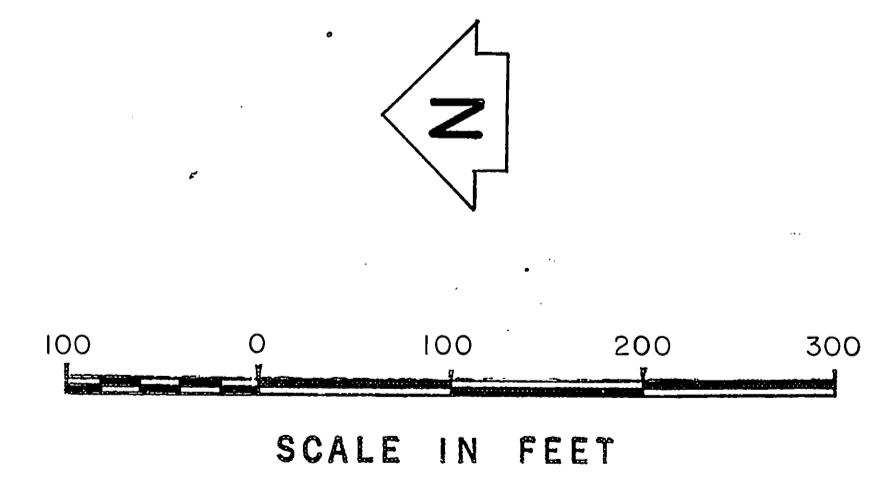
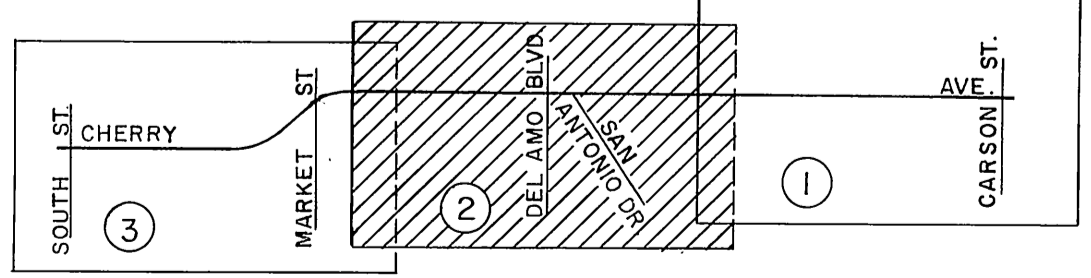
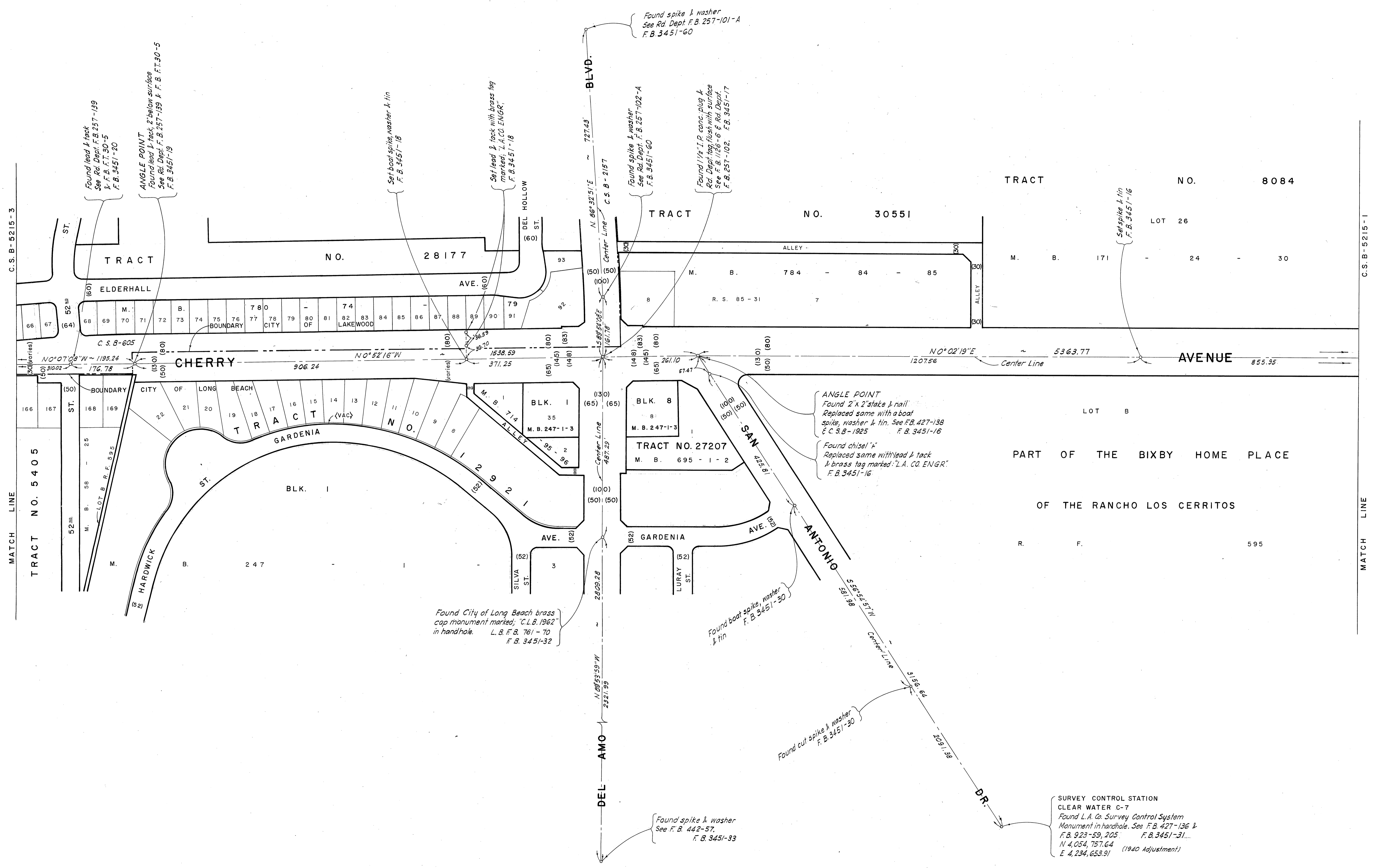


INDEX MAP
NOT TO SCALE

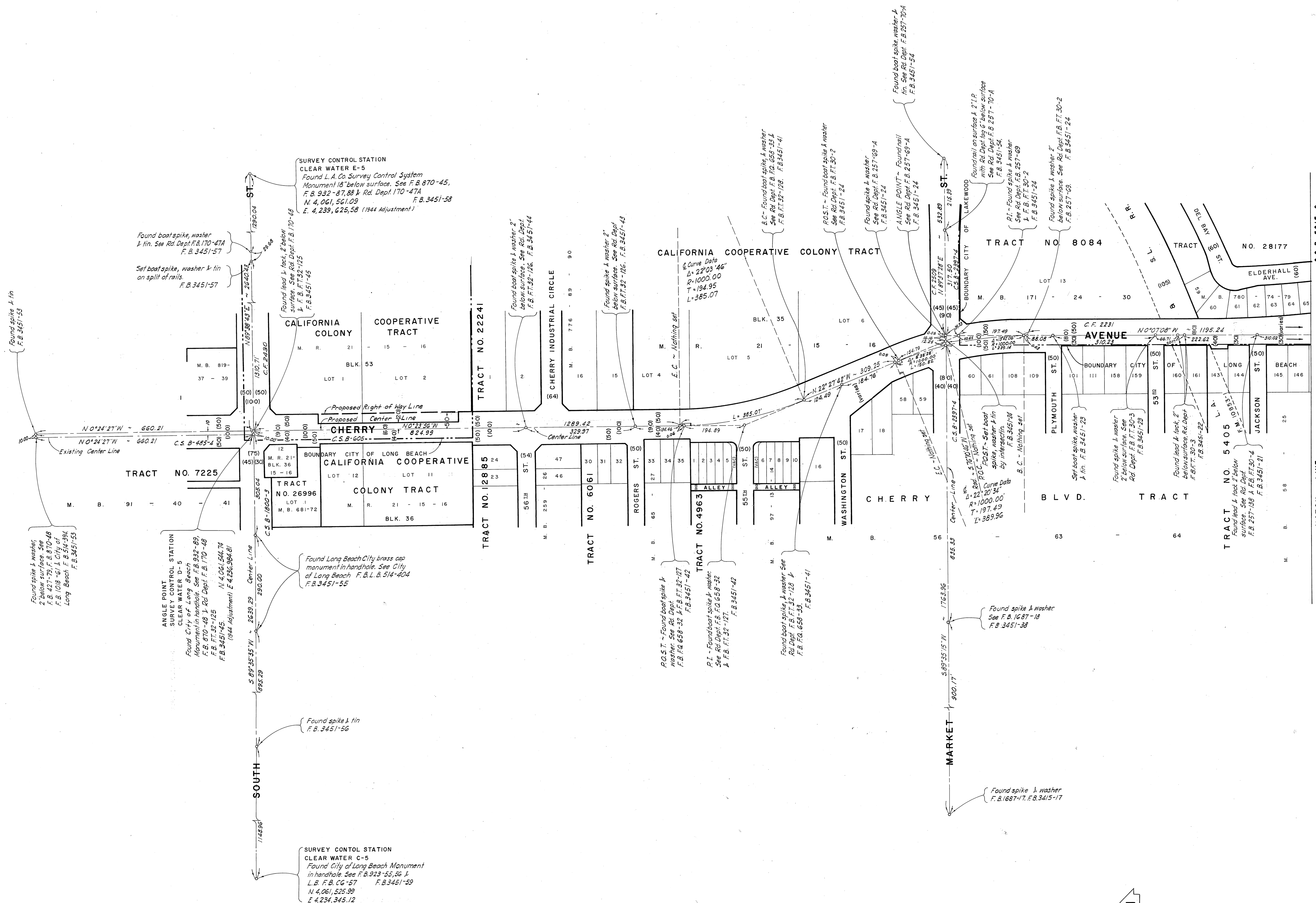


SCALE IN FEET
0 100 200 300

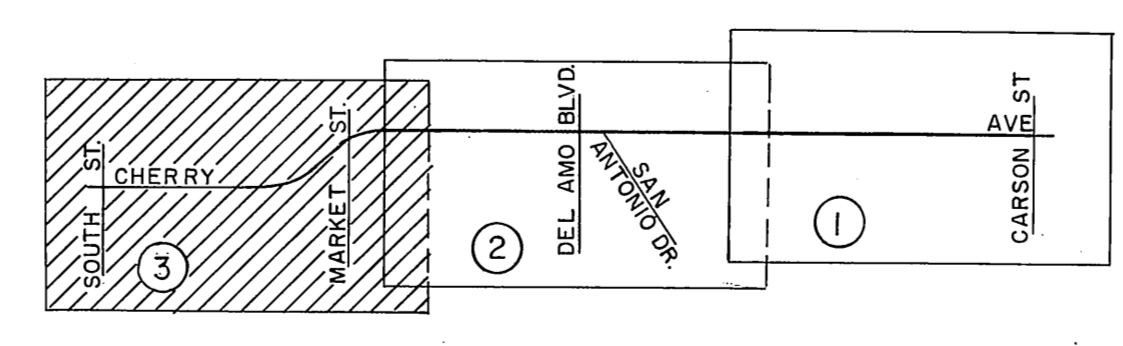
COUNTY OF LOS ANGELES DEPARTMENT OF COUNTY ENGINEER HARVEY T. BRANDT—COUNTY ENGINEER PREPARED BY SURVEY DIVISION GEORGE J. FRANCISCHINI—DIVISION ENGINEER SURVEYED BY <u>A. S. CURTIS</u> CHECKED BY <u>R. D. BAILEY</u> DRAWN BY <u>R. MANOR</u>	ALIGNMENT MAP OF CHERRY AVENUE FROM CARSON STREET TO SOUTH STREET BASIS OF BEARINGS CALIFORNIA COORDINATE SYSTEM, ZONE 7		COUNTY SURVEYOR'S MAP NO. B-5215	REVISION NO. BY DATE
	SHEET 1 OF 3 SHEETS FILED: <u>March 19, 1968</u> DEPT.		SURVEYED MAR 1968 - MAY 1968	
	F. B. 3451 - 5 - 63 N. 4,051,459.05 (1941 Adjustment) E. 4,234,655.84		REFERENCE F. B. 3451 - 5 - 63	
	JOB NUMBER 097.64		INDEX MAP NO. 30,32	



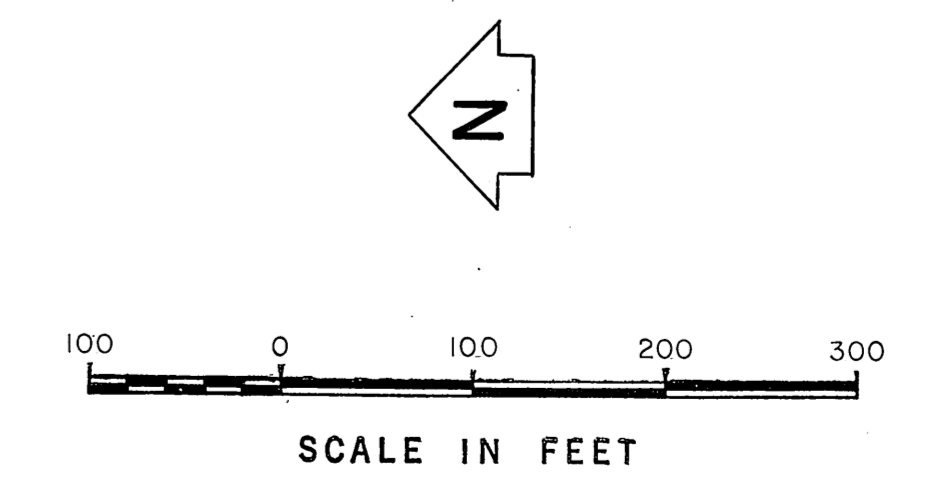
COUNTY OF LOS ANGELES DEPARTMENT OF COUNTY ENGINEER HARVEY T. BRANDT—COUNTY ENGINEER PREPARED BY SURVEY DIVISION GEORGE J. FRANCISCHINI—DIVISION ENGINEER SURVEYED BY <u>A. S. CURTIS</u> CHECKED BY <u>G. D. BAILEY</u> DRAWN BY <u>R. MANOR</u>	ALIGNMENT MAP OF CHERRY AVENUE FROM CARSON STREET TO SOUTH STREET BASIS OF BEARINGS CALIFORNIA COORDINATE SYSTEM, ZONE 7		COUNTY SURVEYOR'S MAP NO. B-5215 SHEET 2 OF 3 SHEETS FILED: <u>March 15, 1968</u> DEPUTY <u>[Signature]</u> SURVEYED MAR 1968 - MAY 1968 REFERENCE F. B. 3451 - 5 - 63 JOB NUMBER 0097.64 INDEX MAP NO. 30,32	REVISION <table border="1"> <tr> <th>NO.</th> <th>BY</th> <th>DATE</th> </tr> <tr> <td> </td> <td> </td> <td> </td> </tr> </table>	NO.	BY	DATE			
	NO.	BY	DATE							
	COUNTY SURVEYOR'S MAP NO. B-5215 SHEET 2 OF 3 SHEETS FILED: <u>March 15, 1968</u> DEPUTY <u>[Signature]</u> SURVEYED MAR 1968 - MAY 1968 REFERENCE F. B. 3451 - 5 - 63 JOB NUMBER 0097.64 INDEX MAP NO. 30,32			REVISION <table border="1"> <tr> <th>NO.</th> <th>BY</th> <th>DATE</th> </tr> <tr> <td> </td> <td> </td> <td> </td> </tr> </table>	NO.	BY	DATE			
NO.	BY	DATE								
COUNTY SURVEYOR'S MAP NO. B-5215 SHEET 2 OF 3 SHEETS FILED: <u>March 15, 1968</u> DEPUTY <u>[Signature]</u> SURVEYED MAR 1968 - MAY 1968 REFERENCE F. B. 3451 - 5 - 63 JOB NUMBER 0097.64 INDEX MAP NO. 30,32			REVISION <table border="1"> <tr> <th>NO.</th> <th>BY</th> <th>DATE</th> </tr> <tr> <td> </td> <td> </td> <td> </td> </tr> </table>	NO.	BY	DATE				
NO.	BY	DATE								
COUNTY SURVEYOR'S MAP NO. B-5215 SHEET 2 OF 3 SHEETS FILED: <u>March 15, 1968</u> DEPUTY <u>[Signature]</u> SURVEYED MAR 1968 - MAY 1968 REFERENCE F. B. 3451 - 5 - 63 JOB NUMBER 0097.64 INDEX MAP NO. 30,32			REVISION <table border="1"> <tr> <th>NO.</th> <th>BY</th> <th>DATE</th> </tr> <tr> <td> </td> <td> </td> <td> </td> </tr> </table>	NO.	BY	DATE				
NO.	BY	DATE								



MATCH LINE



INDEX MAP NOT TO SCALE



COUNTY OF LOS ANGELES DEPARTMENT OF COUNTY ENGINEER HARVEY T. BRANDT—COUNTY ENGINEER PREPARED BY SURVEY DIVISION GEORGE J. FRANCISCHINI—DIVISION ENGINEER SURVEYED BY <u>A. S. CURTIS</u> CHECKED BY <u>G. D. BAILEY</u> DRAWN BY <u>R. MANOR</u>	ALIGNMENT MAP OF CHERRY AVENUE FROM CARSON STREET TO SOUTH STREET BASIS OF BEARINGS CALIFORNIA COORDINATE SYSTEM, ZONE 7		COUNTY SURVEYOR'S MAP NO. B-5215 SHEET 3 OF 3 SHEETS FILED: <u>March 19 1968</u> SURVEYED MAR 1968 - MAY 1968 REFERENCE F. B. 3451 - 5 - 63 JOB NUMBER 09764	REVISION NO. BY DATE
			F. B. 3451-54 F. B. 3451-55 F. B. 3451-56 F. B. 3451-57 F. B. 3451-58 F. B. 3451-59 F. B. 3451-60 F. B. 3451-61 F. B. 3451-62 F. B. 3451-63 F. B. 3451-64 F. B. 3451-65 F. B. 3451-66 F. B. 3451-67 F. B. 3451-68 F. B. 3451-69 F. B. 3451-70 F. B. 3451-71 F. B. 3451-72 F. B. 3451-73 F. B. 3451-74 F. B. 3451-75 F. B. 3451-76 F. B. 3451-77 F. B. 3451-78 F. B. 3451-79 F. B. 3451-80 F. B. 3451-81 F. B. 3451-82 F. B. 3451-83 F. B. 3451-84 F. B. 3451-85 F. B. 3451-86 F. B. 3451-87 F. B. 3451-88 F. B. 3451-89 F. B. 3451-90 F. B. 3451-91 F. B. 3451-92 F. B. 3451-93 F. B. 3451-94 F. B. 3451-95 F. B. 3451-96 F. B. 3451-97 F. B. 3451-98 F. B. 3451-99 F. B. 3451-100	
			INDEX MAP NO. 30, 32	