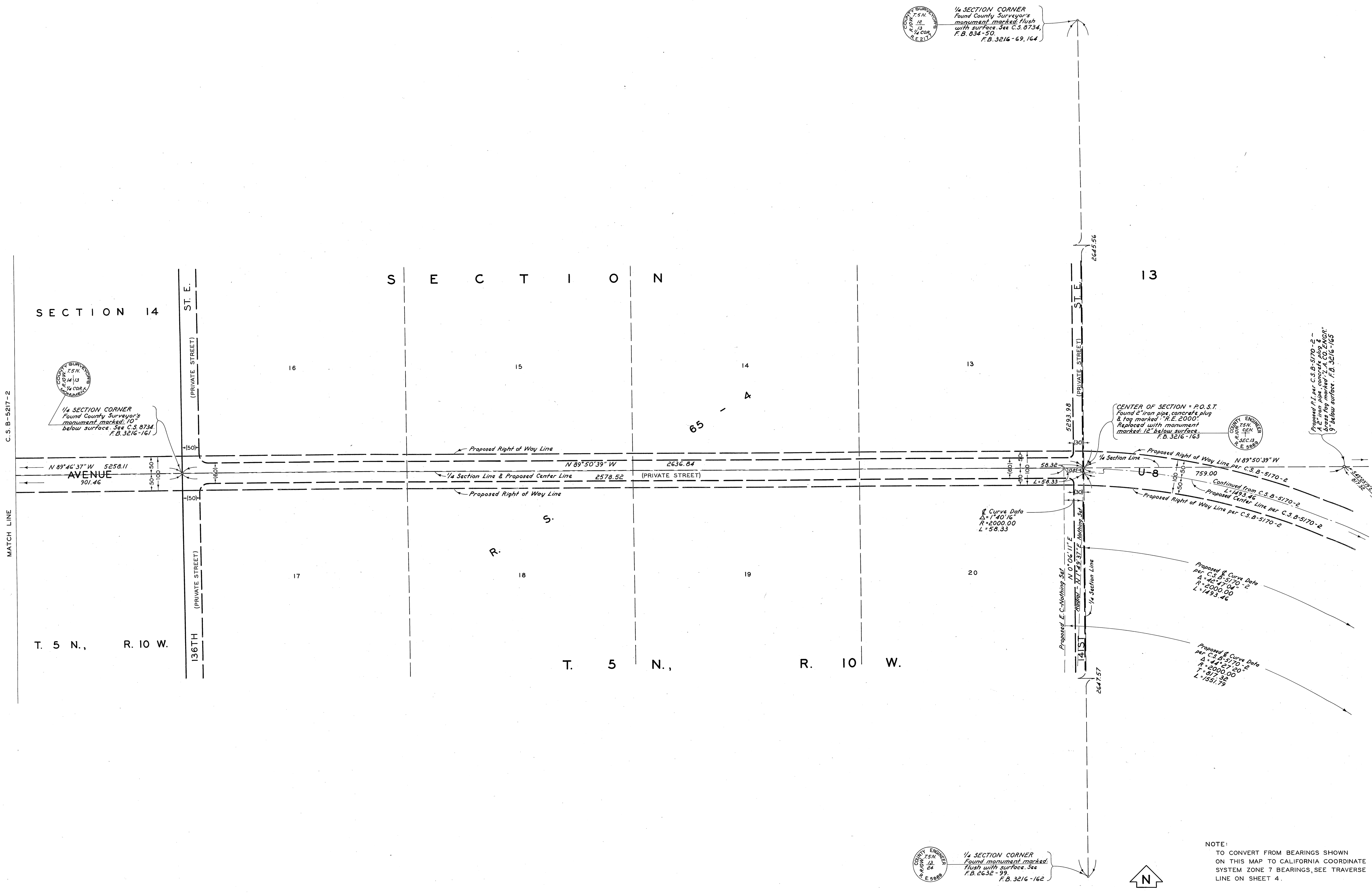


C.2.B-251A-1



$\frac{1}{4}$ SECTION CORNER
 Found County Surveyor's
 monument marked flush
 with surface. See C.S. 8734,
 F.B. 834-50.
 F.B. 3216-69, 164

$\frac{1}{4}$ SECTION CORNER
 Found County Surveyor's
 monument marked 10"
 below surface. See C.S. 8734,
 F.B. 3216-161

CENTER OF SECTION = P.O.S.T.
 Found 2" iron pipe concrete plug
 & tag marked "R.E. 2000".
 Replaced with monument
 marked 12" below surface.
 F.B. 3216-163

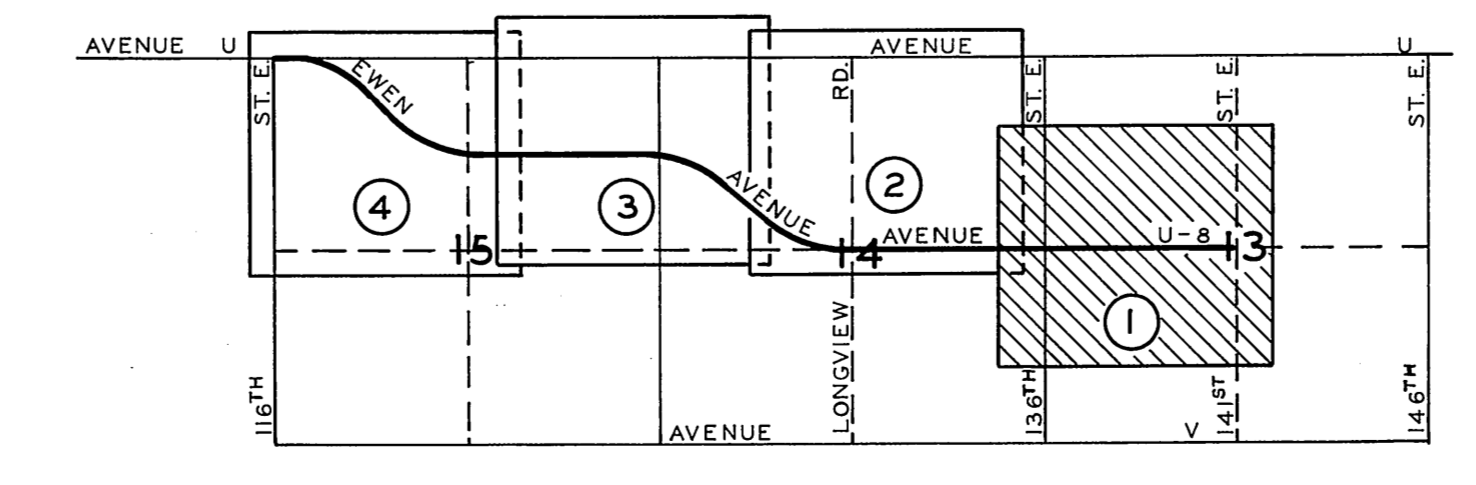
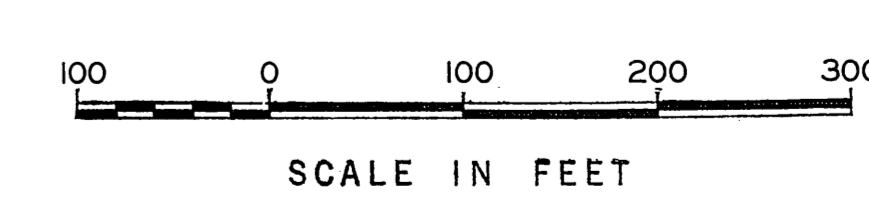
Proposed P.I. per C.S. 8-5170-2
 1/2" iron pipe concrete plug &
 brass tag marked "I.A. CO. ENGR."
 9" below surface. F.B. 3216-160

Proposed Curve Data
 per C.S. 8-5170-2
 $A=5647.06$
 $R=2000.00$
 $L=1493.46$

Proposed Curve Data
 per C.S. 8-5170-2
 $A=4127.20$
 $R=2000.00$
 $L=1151.79$

$\frac{1}{4}$ SECTION CORNER
 Found monument marked
 flush with surface. See
 F.B. 2632-39.
 F.B. 3216-162

NOTE:
 TO CONVERT FROM BEARINGS SHOWN
 ON THIS MAP TO CALIFORNIA COORDINATE
 SYSTEM ZONE 7 BEARINGS, SEE TRAVERSE
 LINE ON SHEET 4.



COUNTY OF LOS ANGELES DEPARTMENT OF COUNTY ENGINEER HARVEY T. BRANDY—COUNTY ENGINEER PREPARED BY SURVEY DIVISION GEORGE J. FRANCESCINI—DIVISION ENGINEER SURVEYED BY J.S. COATES CHECKED BY B. HILARIO DRAWN BY S. SUNABE	ALIGNMENT MAP OF AVENUE U-8 - EWEN AVENUE FROM 141ST STREET EAST TO 116TH STREET EAST		COUNTY SURVEYOR'S MAP NO. B-5217 SHEET 1 OF 4 SHEETS FILED: <i>[Signature]</i> 19 <i>[Date]</i> SURVEYED FEB.-MAR., 1970 REFERENCE F.B. 3216	REVISION NO. BY DATE
	BASIS OF BEARINGS THE BEARING OF THE WEST LINE OF THE E1/2 OF SECTION 14, T. 5 N., R. 10 W. (N 0° 01' 50" E) AS SHOWN ON C.S. B-2568-1		JOB NUMBER 0098.11	INDEX MAP NO. 66

C.2.B-251A-1

C-2-B-251A-5

SECTION 11 T. 5 N., R. 10 W.

N 89° 46' 45" W 2618.71

1/4 SECTION CORNER Found monument marked flush with surface. See C.S. 8734 & F.B. 1880-12. F.B. 3216-64, 199

AVE. U

RD. U

SECTION 14 T. 5 N., R. 10 W.

Found 2"x2" stake, tack & tag marked "R.E. 6244" See F.B. 1880-12. F.B. 3216-199

CENTER OF SECTION Found 2" iron pipe, concrete plug, tack & brass tag marked "R.E. 6244-12" above surface. See F.B. 1880-12 & C.S. 2568. Removed same & set monument marked "12" below surface by intersection. F.B. 3216-198

Found 2"x2" stake & tag marked "R.E. 6244" F.B. 3216-198

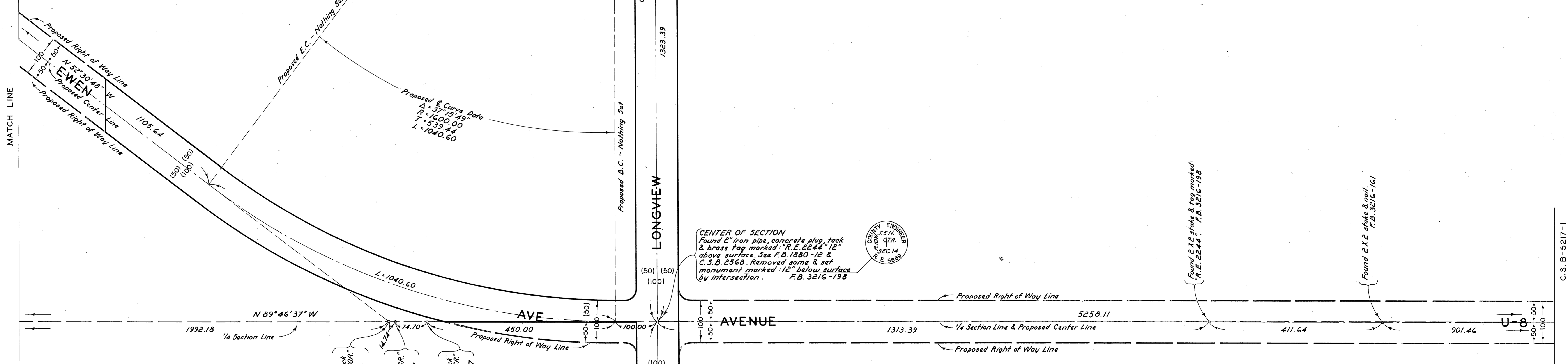
Found 2"x2" stake & tag marked "R.E. 6244" F.B. 3216-161

C.S.B-5217-3

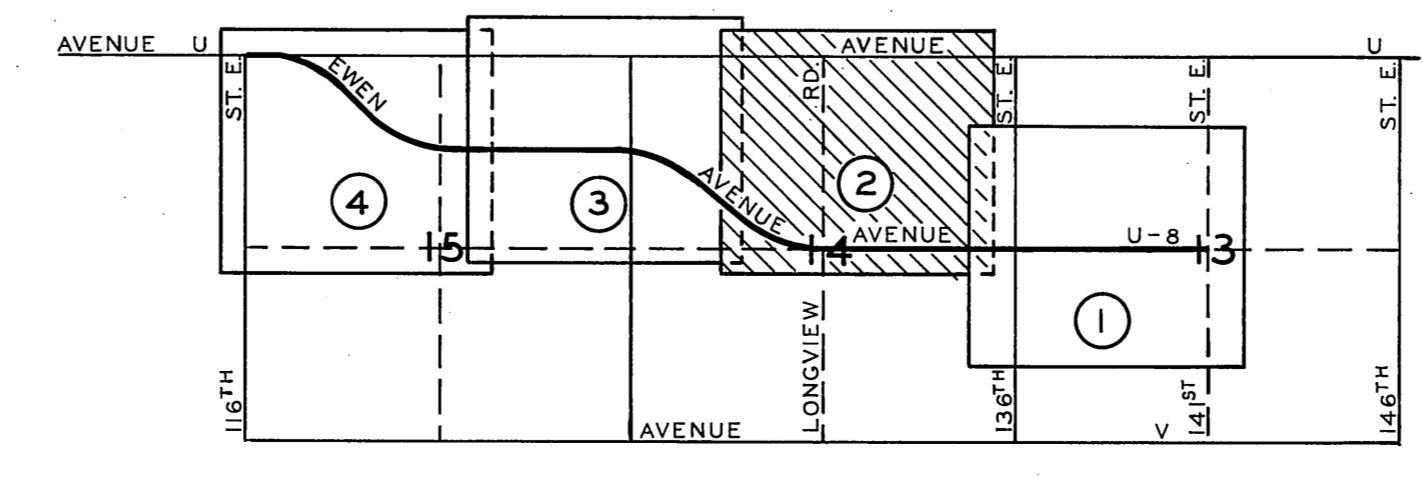
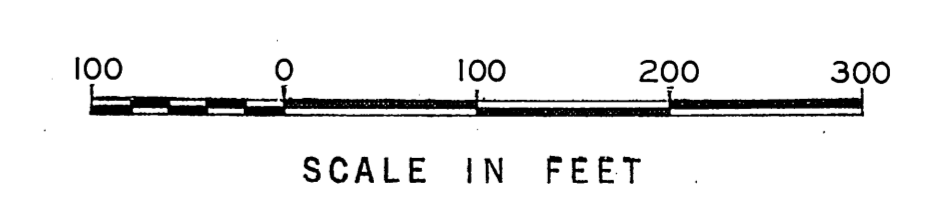
MATCH LINE

C.S.B-5217-1

MATCH LINE



NOTE: TO CONVERT FROM BEARINGS SHOWN ON THIS MAP TO CALIFORNIA COORDINATE SYSTEM ZONE 7 BEARINGS, SEE TRAVERSE LINE ON SHEET 4.



PROPOSED 6" Set C-1" iron pipe, concrete plug, tack & brass tag marked "L.A. CO. ENGR." flush with surface. F.B. 3216-204

P.O.S.T. - Set 2" iron pipe, concrete plug, tack & brass tag marked "L.A. CO. ENGR." above surface. F.B. 3216-197

P.O.S.T. - Set 2" iron pipe, concrete plug, tack & brass tag marked "L.A. CO. ENGR." flush with surface. F.B. 3216-197

1/4 SECTION CORNER Found monument marked 10" below surface. See C.S. 8734, F.B. 1880-11, C.S.B-2568 & F.B. 2632-68. F.B. 3216-198

COUNTY ENGINEER HARVEY T. BRANDT

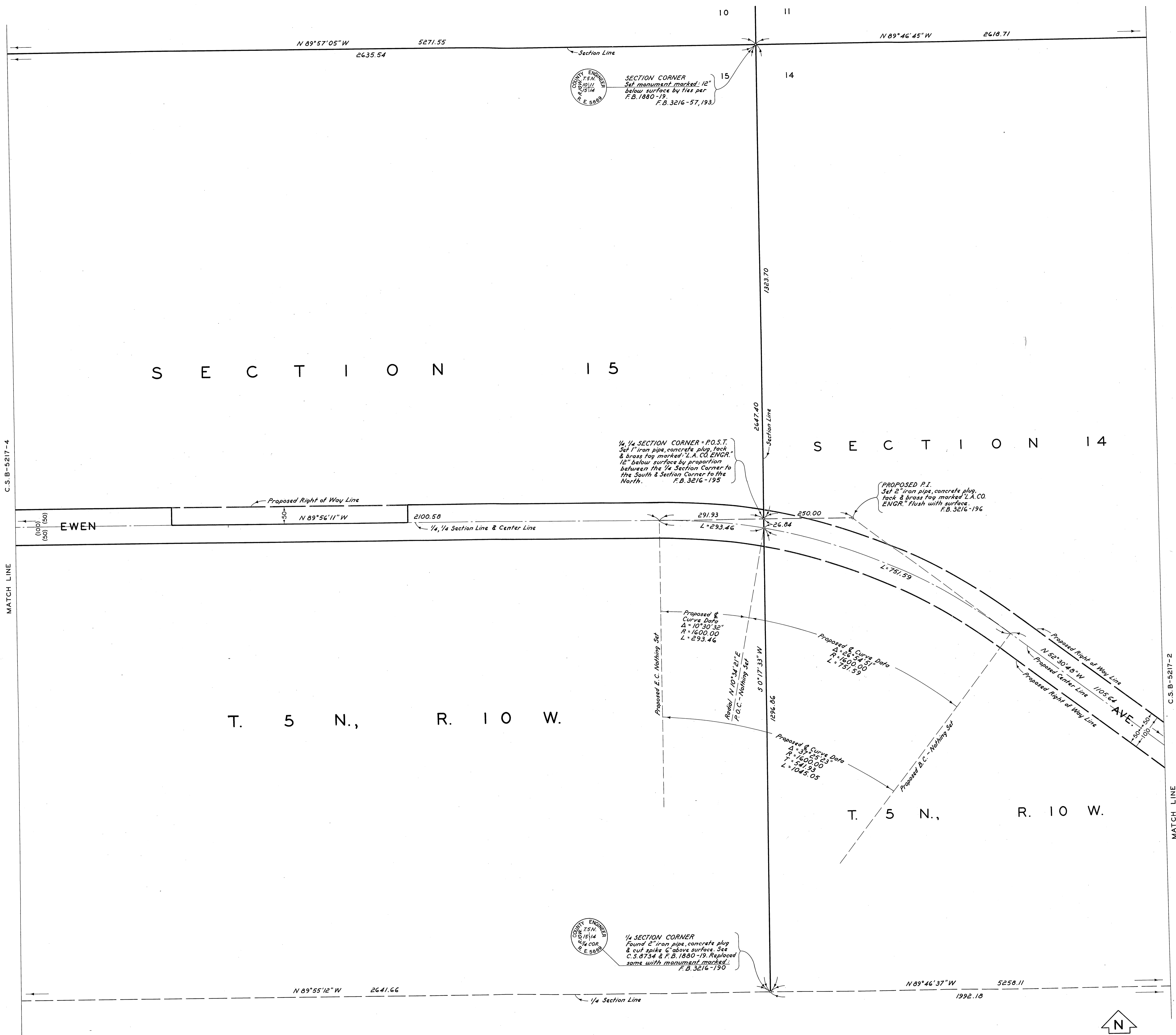
COUNTY OF LOS ANGELES DEPARTMENT OF COUNTY ENGINEER HARVEY T. BRANDT-COUNTY ENGINEER PREPARED BY SURVEY DIVISION GEORGE J. FRANCISCHINI-DIVISION ENGINEER SURVEYED BY J.S. COATES CHECKED BY R. HILARIO DRAWN BY S. SUNABE

ALIGNMENT MAP OF AVENUE U-8 - EWEN AVENUE FROM 141ST STREET EAST TO 116TH STREET EAST BASIS OF BEARINGS THE BEARING OF THE WEST LINE OF THE E/2 OF SECTION 14, T. 5 N., R. 10 W. (N 0° 01' 50" E) AS SHOWN ON C.S.B-2568-1

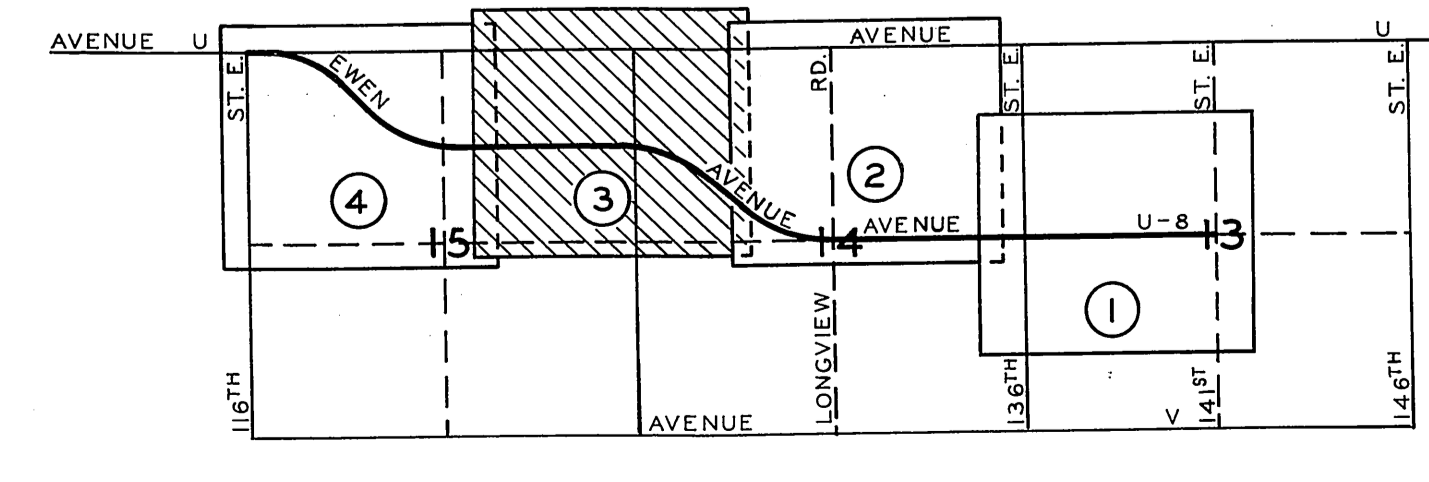
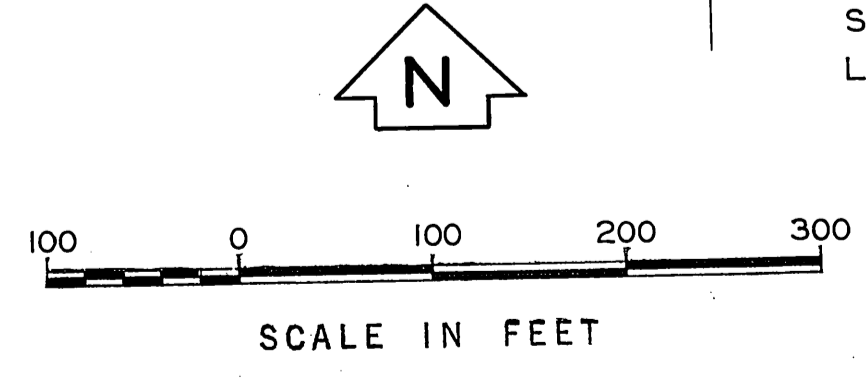
Table with columns for COUNTY SURVEYOR'S MAP NO. (B-5217), SHEET 2 OF 4 SHEETS, FILED: APR 19 1970, SURVEYED BY (R. J. MITCHELL), SURVEYED (FEB-MAR, 1970), REFERENCE (F.B. 3216), JOB NUMBER (0098.11), INDEX MAP NO. (66), and REVISION columns.

C-2-B-251A-5

C 2 B - 2 5 1 7 - 3



NOTE:
TO CONVERT FROM BEARINGS SHOWN
ON THIS MAP TO CALIFORNIA COORDINATE
SYSTEM ZONE 7 BEARINGS, SEE TRAVERSE
LINE ON SHEET 4.



COUNTY OF LOS ANGELES DEPARTMENT OF COUNTY ENGINEER HARVEY T. BRANDT—COUNTY ENGINEER PREPARED BY SURVEY DIVISION GEORGE J. FRANCISCHINI—DIVISION ENGINEER SURVEYED BY J.S. COATES CHECKED BY R. HILARIO DRAWN BY S. SUNABE	ALIGNMENT MAP OF AVENUE U-8 - EWEN AVENUE FROM 141ST STREET EAST TO 116TH STREET EAST BASIS OF BEARINGS THE BEARING OF THE WEST LINE OF THE E1/2 OF SECTION 14, T. 5 N., R. 10 W. (N 0° 01' 50" E) AS SHOWN ON C.S.B-2568-1		COUNTY SURVEYOR'S MAP NO. B-5217 SHEET 5 OF 4 SHEETS FILED: <i>April 2 1974</i> <i>R.D. MITCHELL</i> DEPUTY SURVEYED FEB - MAR, 1970 REFERENCE F.B. 3216 JOB NUMBER 0098.11 INDEX MAP NO. 66	REVISION NO. BY DATE

C 2 B - 2 5 1 7 - 3

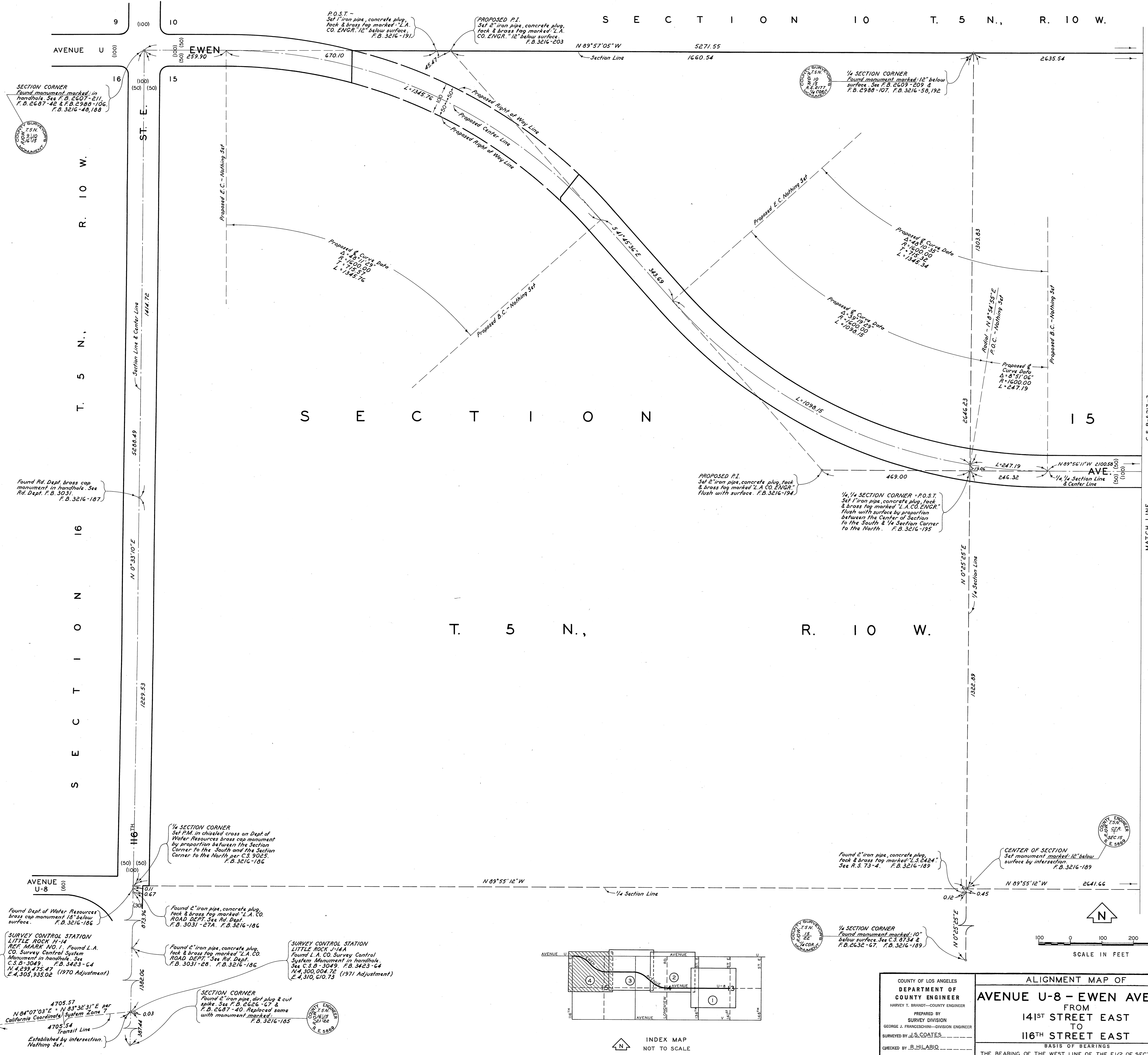
C.2.B-251-2.C

C.2.B-251-1-4

SECTION 10 T. 5 N., R. 10 W.

SECTION 15

T. 5 N., R. 10 W.



SECTION CORNER
Found monument marked in
handhole. See F.B. 2507-211,
F.B. 2687-42 & F.B. 2988-106,
F.B. 3216-48, 188

Found Rd. Dept. brass cap
monument in handhole. See
Rd. Dept. F.B. 3031
F.B. 3216-187

1/4 SECTION CORNER
Set P.M. in chiseled cross on Dept. of
Water Resources brass cap monument
by proportion between the Section
Corner to the South and the Section
Corner to the North. per C.S. 9025.
F.B. 3216-186

Found Dept. of Water Resources
brass cap monument 18\"/>

Found 2\"/>

Found 2\"/>

SURVEY CONTROL STATION
LITTLE ROCK #14A
Found L.A. CO. Survey Control
System Monument in handhole. See
C.S.B. 3049, F.B. 3423-64
N 4,299,475.47 (1970 Adjustment)
E 4,305,935.02

SECTION CORNER
Found 2\"/>

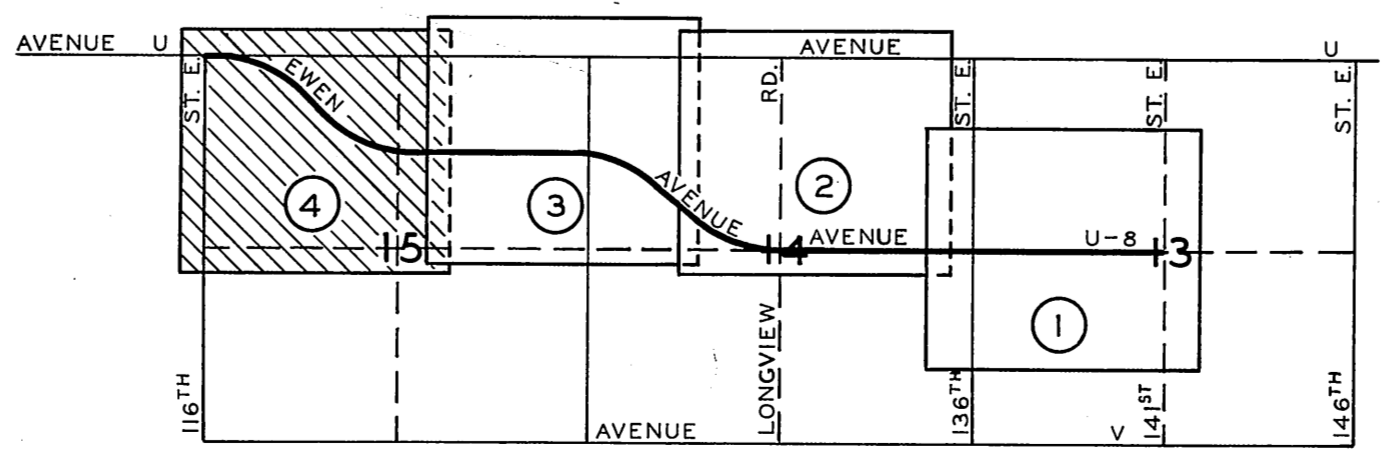
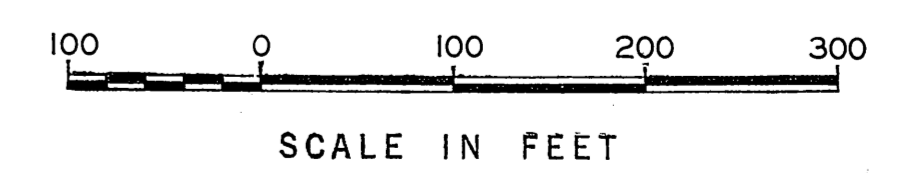
SURVEY CONTROL STATION
LITTLE ROCK #14A
Found L.A. CO. Survey Control
System Monument in handhole.
See C.S.B. 3049, F.B. 3423-64
N 4,300,004.72 (1971 Adjustment)
E 4,310,010.73

1/4 SECTION CORNER - P.O.S.T.
Set 1\"/>

Found 2\"/>

1/4 SECTION CORNER
Found monument marked 10\"/>

NOTE:
TO CONVERT FROM BEARINGS SHOWN
ON THIS MAP TO CALIFORNIA COORDINATE
SYSTEM ZONE 7 BEARINGS, SEE TRAVERSE
LINE ON THIS SHEET.



INDEX MAP
NOT TO SCALE

COUNTY OF LOS ANGELES DEPARTMENT OF COUNTY ENGINEER HARVEY T. BRANDT - COUNTY ENGINEER PREPARED BY SURVEY DIVISION GEORGE J. FRANCESCHINI - DIVISION ENGINEER SURVEYED BY J.S. COATES CHECKED BY B. HILARIO DRAWN BY S. SUNABE	ALIGNMENT MAP OF AVENUE U-8 - EWEN AVENUE FROM 141ST STREET EAST TO 116TH STREET EAST		COUNTY SURVEYOR'S MAP NO. B-5217	REVISION NO. BY DATE
	SHEET 4 OF 4 SHEETS FILED: <i>April 9, 1970</i> SURVEYED DEPUTY <i>B. J. Mittlebach</i>		REFERENCE FEB-MAR, 1970	
	BASIS OF BEARINGS THE BEARING OF THE WEST LINE OF THE 1/2 OF SECTION 14, T. 5 N., R. 10 W. (N 0° 01' 50\"/>		F.B. 3216	
	JOB NUMBER 0098.11		INDEX MAP NO. 66	