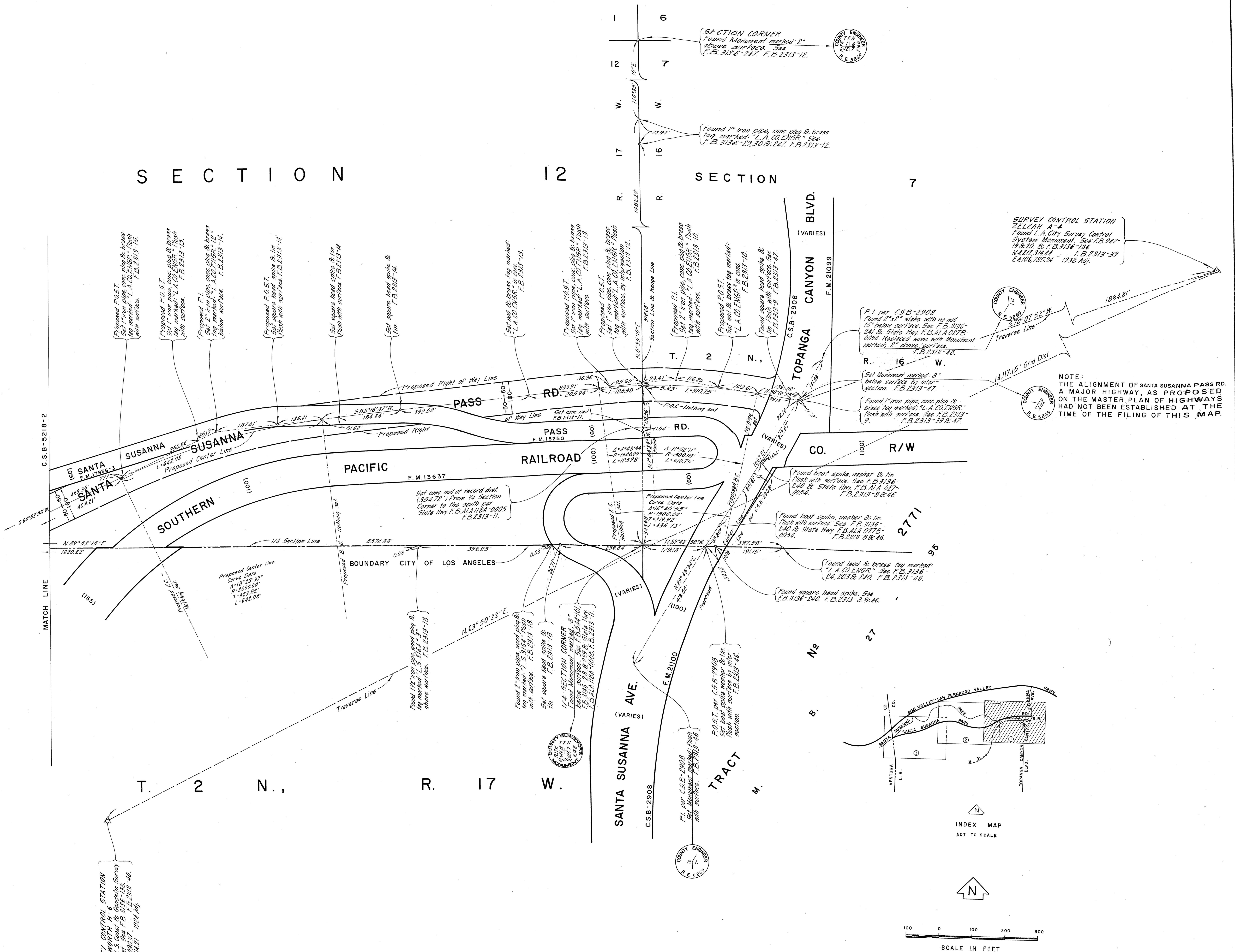


SECTION 12

SECTION 7



SURVEY CONTROL STATION
 ZELZAH A-4
 Found L.A. City Survey Control System Monument. See F.B. 947-19 & 20 & F.B. 3136-136
 N 42° 34' 44" E F.B. 2313-39
 L 4106.78524 - 1938 Adj.

NOTE:
 THE ALIGNMENT OF SANTA SUSANNA PASS RD. A MAJOR HIGHWAY, AS PROPOSED ON THE MASTER PLAN OF HIGHWAYS HAD NOT BEEN ESTABLISHED AT THE TIME OF THE FILING OF THIS MAP.

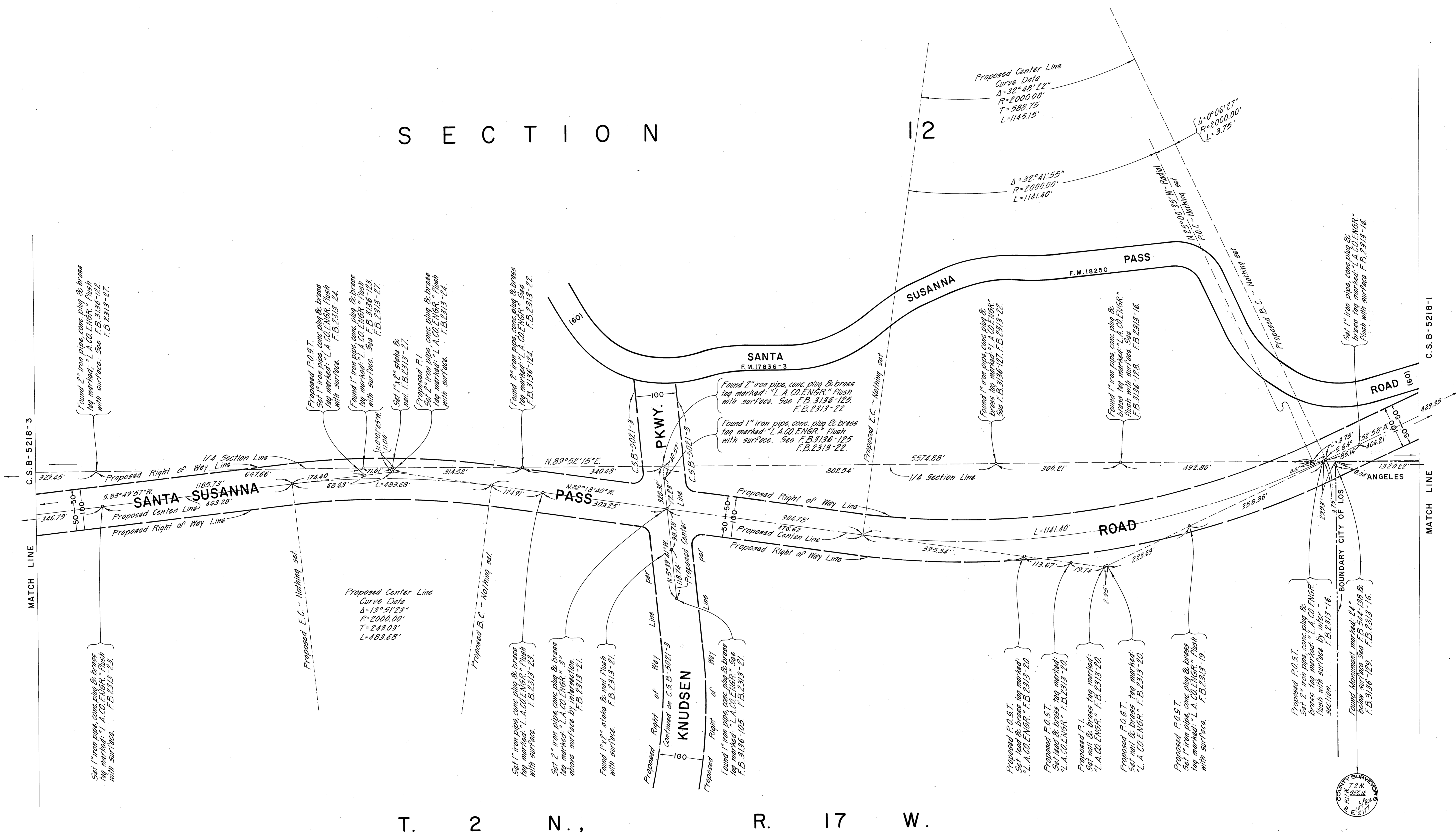
INDEX MAP
 NOT TO SCALE

SCALE IN FEET
 0 100 200 300

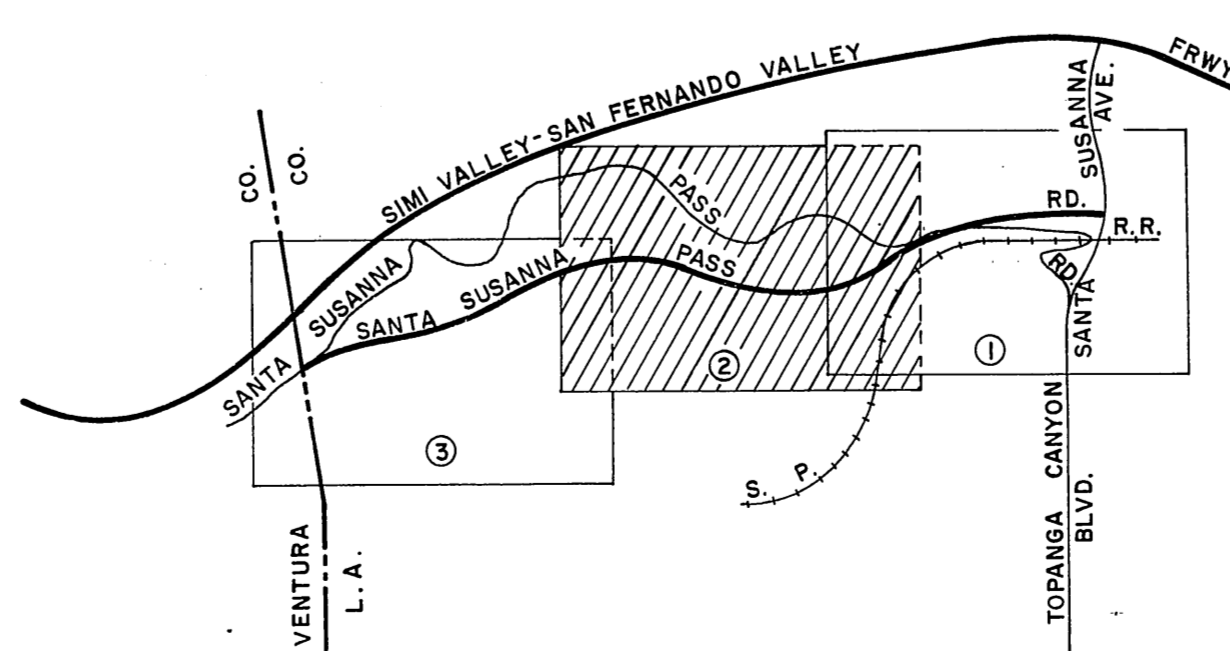
SURVEY CONTROL STATION
 CHATSWORTH A-6
 Found L.A. City Survey Control System Monument. See F.B. 3136-136
 N 42° 34' 44" E F.B. 2313-39
 L 4106.78524 - 1938 Adj.

COUNTY OF LOS ANGELES DEPARTMENT OF COUNTY ENGINEER HARVEY E. BRANDY—COUNTY ENGINEER PREPARED BY SURVEY DIVISION GEORGE J. FRANCESCHINI—DIVISION ENGINEER SURVEYED BY <u>D. BURKHOLDER</u> D. SAPPPELL CHECKED BY <u>W. EDMONDSON</u> DRAWN BY <u>S. BRIONES</u>	ALIGNMENT MAP OF SANTA SUSANNA PASS ROAD FROM TOPANGA CANYON BLVD. TO VENTURA COUNTY BOUNDARY BASIS OF BEARINGS CALIFORNIA COORDINATE SYSTEM ZONE 7		COUNTY SURVEYOR'S MAP NO. B-5218 SHEET 1 OF 3 SHEETS FILED: <u>June 23, 1969</u> <u>R. J. Mitchell</u> COUNTY SURVEYED AUG. & NOV. 1969 REFERENCE F.B. 2313-5-51 JOB NUMBER 0098.02 INDEX MAP NO. 204-097	REVISION NO. BY DATE

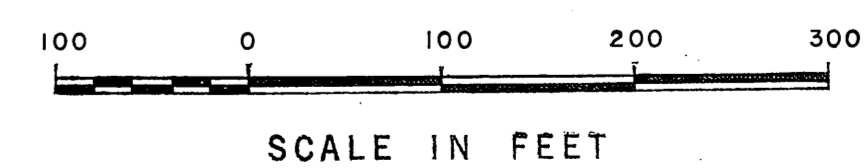
SECTION 12



T. 2 N., R. 17 W.



INDEX MAP NOT TO SCALE



COUNTY OF LOS ANGELES DEPARTMENT OF COUNTY ENGINEER HARVEY T. BRANDT—COUNTY ENGINEER PREPARED BY SURVEY DIVISION GEORGE J. FRANCESCHINI—DIVISION ENGINEER SURVEYED BY <u>D. BURKHOLDER</u> CHECKED BY <u>W. EDMONDSON</u> DRAWN BY <u>S. BRIONES</u>	ALIGNMENT MAP OF SANTA SUSANNA PASS ROAD FROM TOPANGA CANYON BLVD. TO VENTURA COUNTY BOUNDARY BASIS OF BEARINGS CALIFORNIA COORDINATE SYSTEM ZONE 7		COUNTY SURVEYOR'S MAP NO. B-5218 SHEET 2 OF 3 SHEETS FILED: <u>June 23</u> 19 <u>72</u> <u>D. J. McCall</u> DEPUTY SURVEYED AUG. & NOV. 1969 REFERENCE F. B. 2313-5-51	REVISION NO. BY DATE
			JOB NUMBER 0098-02	INDEX MAP NO. 204-097

