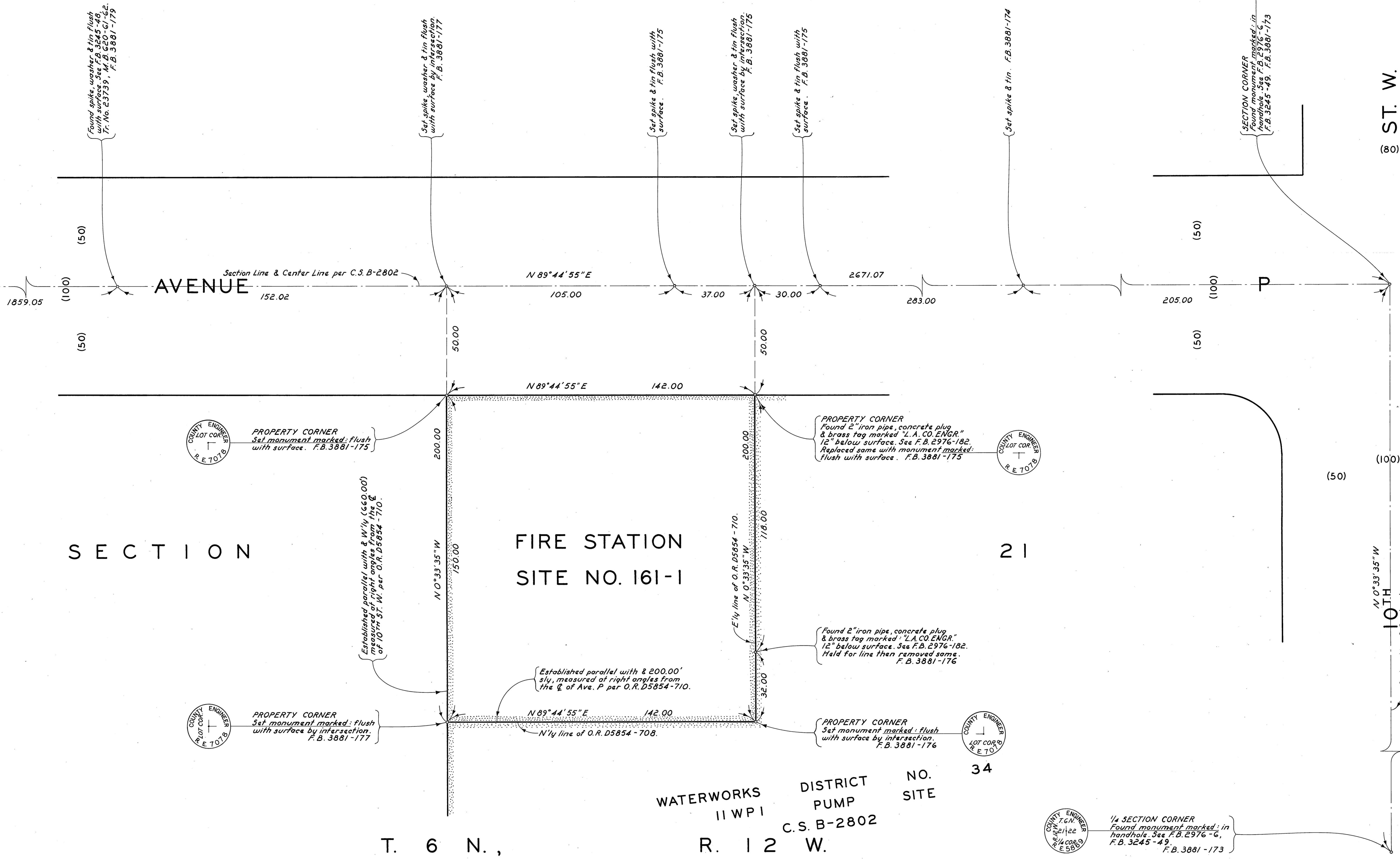


1/4 SECTION CORNER
Found spike washer & tin flush
with surface. See F.B. 3245-48
Fr. No. 23733, F.B. 3881-172

SECTION CORNER
Found spike washer & tin flush
with surface. See F.B. 3245-49
Fr. No. 23733, F.B. 3881-173



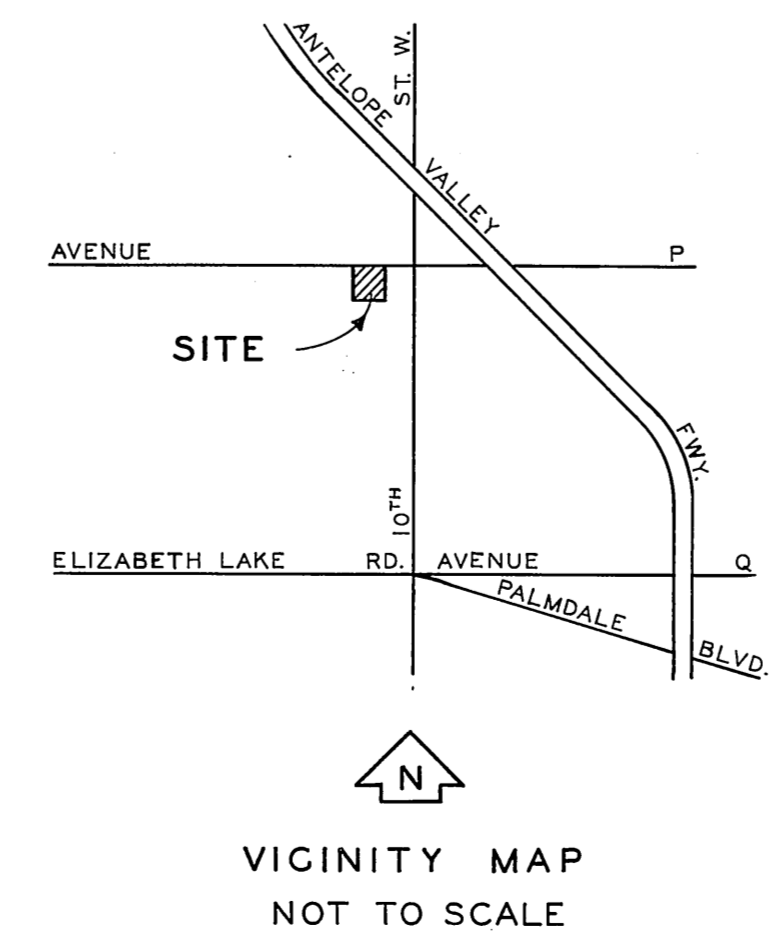
SECTION

FIRE STATION
SITE NO. 161-1

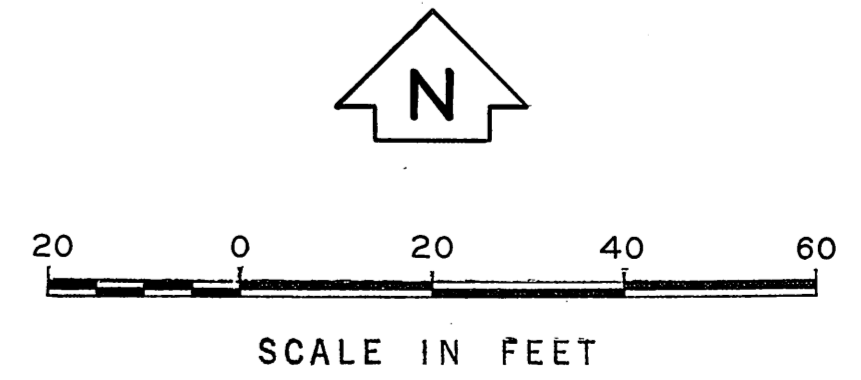
21

T. 6 N.,

WATERWORKS DISTRICT NO. 34
PUMP SITE
C.S.B-2802
R. 12 W.



VICINITY MAP
NOT TO SCALE



COUNTY OF LOS ANGELES DEPARTMENT OF COUNTY ENGINEER HARVEY T. BRAND—COUNTY ENGINEER PREPARED BY SURVEY DIVISION GEORGE J. FRANCISCHINI—DIVISION ENGINEER SURVEYED BY <u>J. MENDONCA</u> CHECKED BY <u>R. HILARIO</u> DRAWN BY <u>S. SUNABE</u>	BOUNDARY MAP OF FIRE STATION SITE NO. 161-1 PALMDALE AREA FOR TOPOGRAPHY SEE SURVEY DIVISION FILE MAP NO. PT. J-98 BASIS OF BEARINGS THE CENTER LINE OF AVENUE P (N 89° 44' 55" E) AS SHOWN ON C.S.B-2802		COUNTY SURVEYOR'S MAP NO. B-5219 SHEET 1 OF 1 SHEET FILED: <u>August 17, 1974</u> <u>R. J. Mendonca</u> COUNTY ENGINEER SURVEYED AUGUST, 1973 REFERENCE F. B. 3881	REVISION NO. BY DATE
	JOB NUMBER 0738.14		INDEX MAP NO. 324-237	