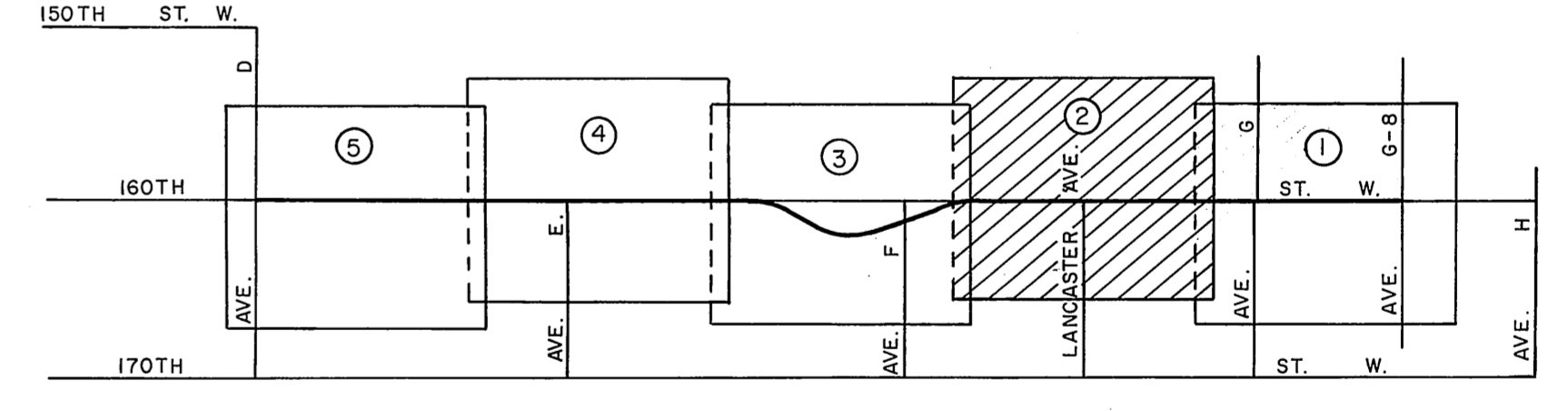
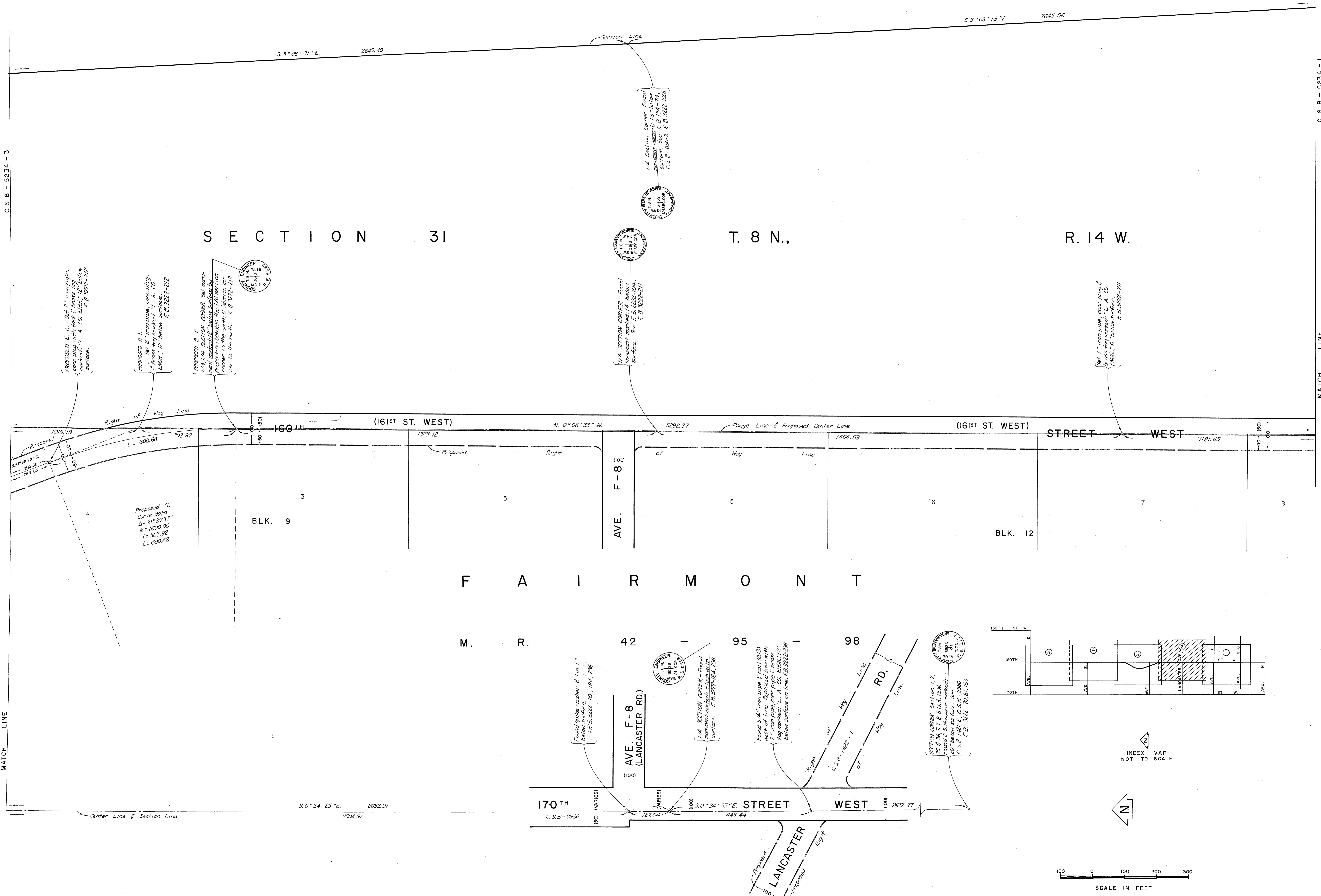




SECTION 31

T. 8 N.

R. 14 W.



INDEX MAP NOT TO SCALE

SCALE IN FEET

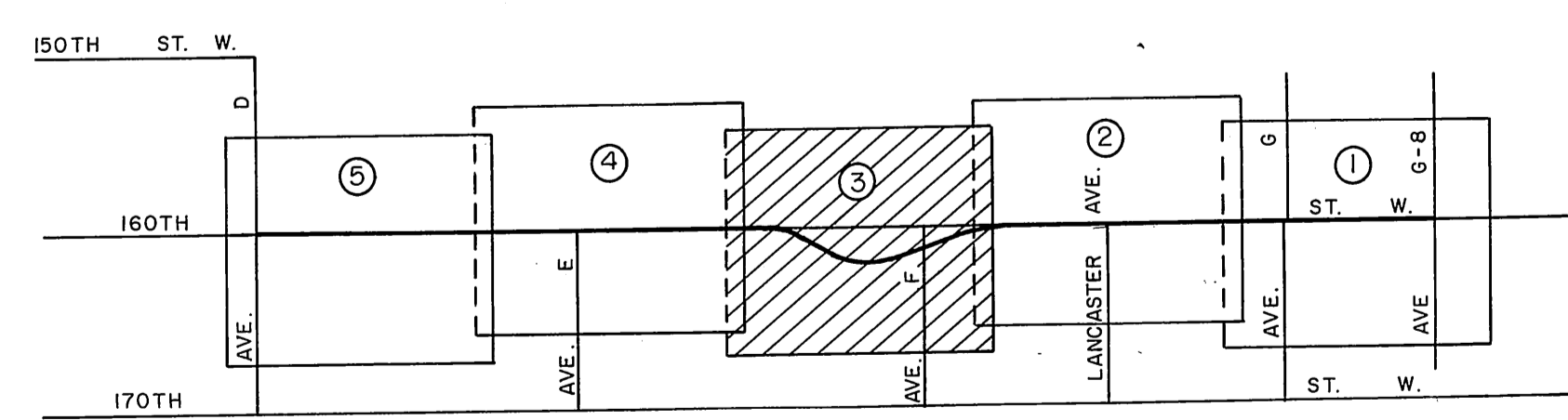
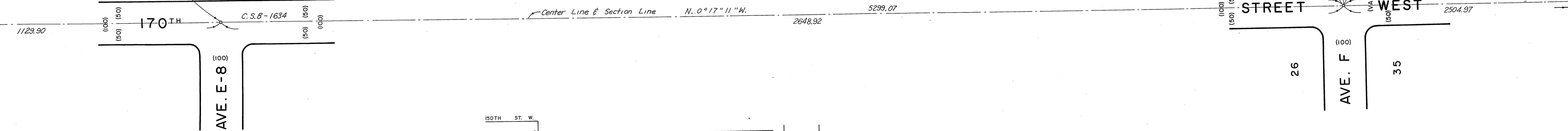
COUNTY OF LOS ANGELES DEPARTMENT OF COUNTY ENGINEER HARVEY T. BRANDT—COUNTY ENGINEER PREPARED BY SURVEY DIVISION GEORGE J. FRANCISCHINI—DIVISION ENGINEER SURVEYED BY J. S. COATES CHECKED BY C. WRIGHT DRAWN BY B. NUNEZ, J. D. ALFRED	ALIGNMENT MAP OF <b>160<sup>TH</sup> STREET WEST</b> FROM <b>AVENUE G-8</b> TO <b>AVENUE - D</b>		COUNTY SURVEYOR'S MAP NO. <b>B-5234</b> SHEET 2 OF 5 SHEETS FILED: <i>George J. Francischini</i> , 1972 DEPUTY SURVEYED JULY 1971 TO MARCH 1972 REFERENCE F. B. 3222 JOB NUMBER 0097, 50 INDEX MAP NO. 72	REVISION NO. BY DATE
	BASIS OF BEARINGS CALIFORNIA COORDINATE SYSTEM, ZONE 7			

C.S.B-5234-4

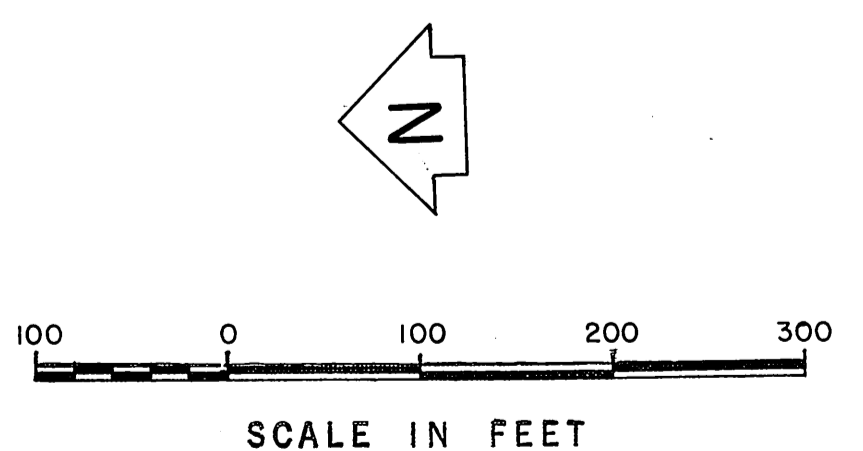
C.S.B-5234-2

SECTION 30 T. 8 N., R. 14 W.

SECTION 25 T. 8 N., R. 15 W.



INDEX MAP NOT TO SCALE



COUNTY OF LOS ANGELES DEPARTMENT OF COUNTY ENGINEER HARVEY T. BRANDT—COUNTY ENGINEER PREPARED BY SURVEY DIVISION GEORGE J. FRANCESCINI—DIVISION ENGINEER SURVEYED BY J. S. COATES CHECKED BY C. WRIGHT DRAWN BY B. NUNEZ, J.D. ALFRED	ALIGNMENT MAP OF <b>160TH STREET WEST</b> FROM <b>AVENUE G-8</b> TO <b>AVENUE D</b>		COUNTY SURVEYOR'S MAP NO. <b>B-5234</b>	REVISION NO. BY DATE
	SHEET 3 OF 5 SHEETS FILED: <i>Francis 22 19 76</i> <i>R. J. M. [Signature]</i> DEPUTY		SURVEYED JULY 1971 TO MARCH 1972	
	BASIS OF BEARINGS CALIFORNIA COORDINATE SYSTEM, ZONE 7		REFERENCE F. B. 3222	
			JOB NUMBER 0097.50	INDEX MAP NO. 72

C.S.B-5234-5

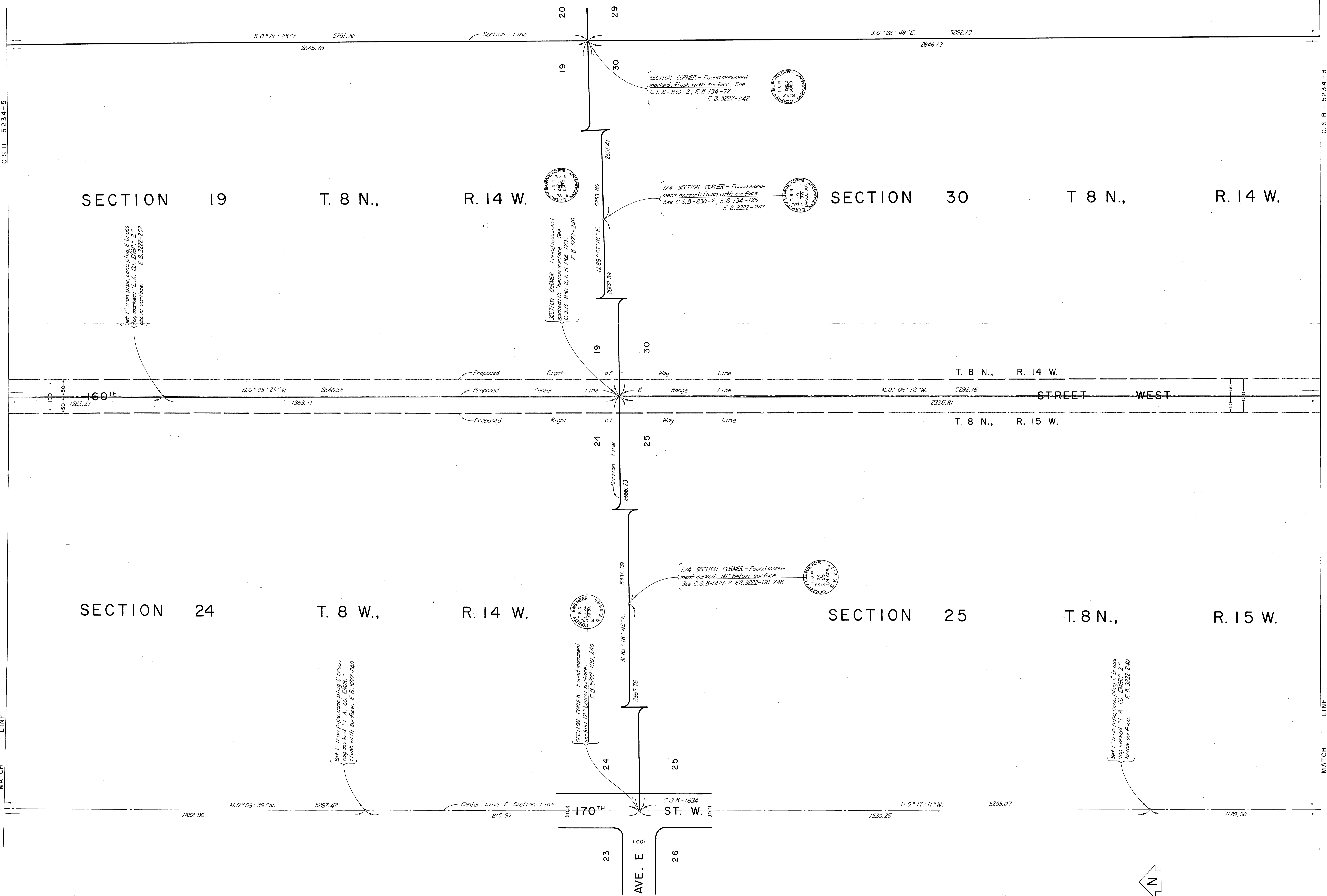
C.S.B-5234-3

SECTION 19 T. 8 N., R. 14 W.

SECTION 30 T. 8 N., R. 14 W.

SECTION 24 T. 8 W., R. 14 W.

SECTION 25 T. 8 N., R. 15 W.



Set 1" iron pipe, conc. plug & brass  
top marked "L.A. CO. ENGINEER"  
below surface. F.B. 3222-432

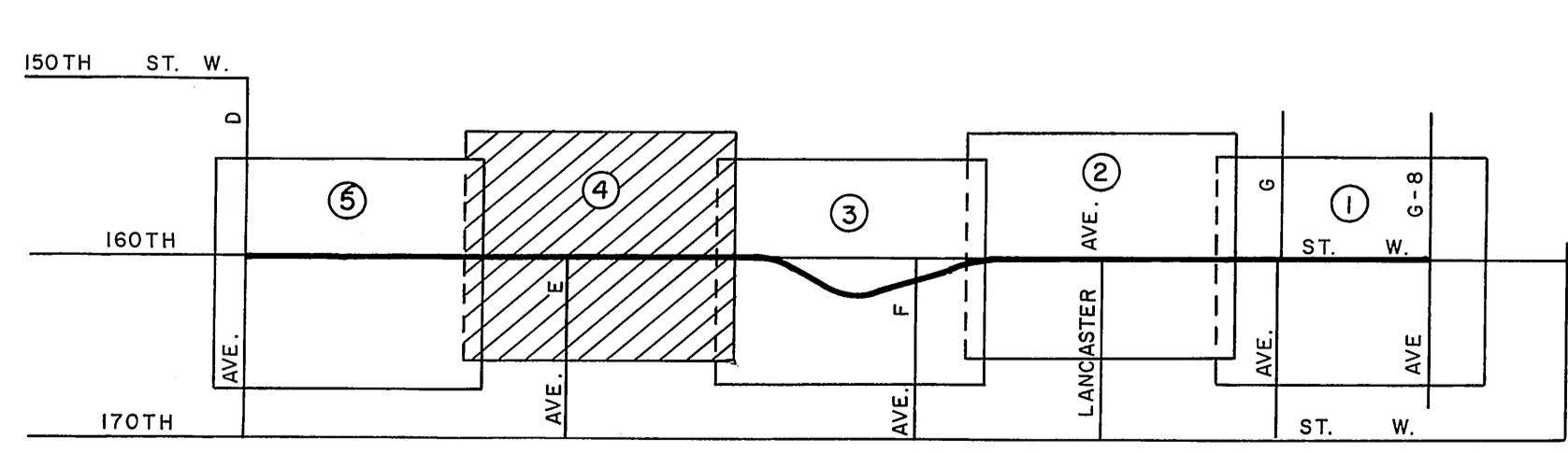
SECTION CORNER - Found monument  
marked "12" below surface. See  
C.S.B-830-2, F.B. 134-125.  
F.B. 3222-246

1/4 SECTION CORNER - Found monu-  
ment marked "flush with surface."  
See C.S.B-830-2, F.B. 134-125.  
F.B. 3222-247

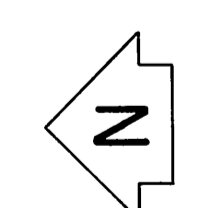
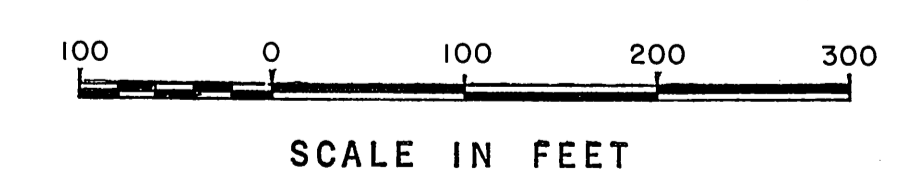
1/4 SECTION CORNER - Found monu-  
ment marked "16" below surface.  
See C.S.B-1421-2, F.B. 3222-191-248

Set 1" iron pipe, conc. plug & brass  
top marked "L.A. CO. ENGINEER"  
flush with surface. F.B. 3222-240

Set 1" iron pipe, conc. plug & brass  
top marked "L.A. CO. ENGINEER"  
below surface. F.B. 3222-240

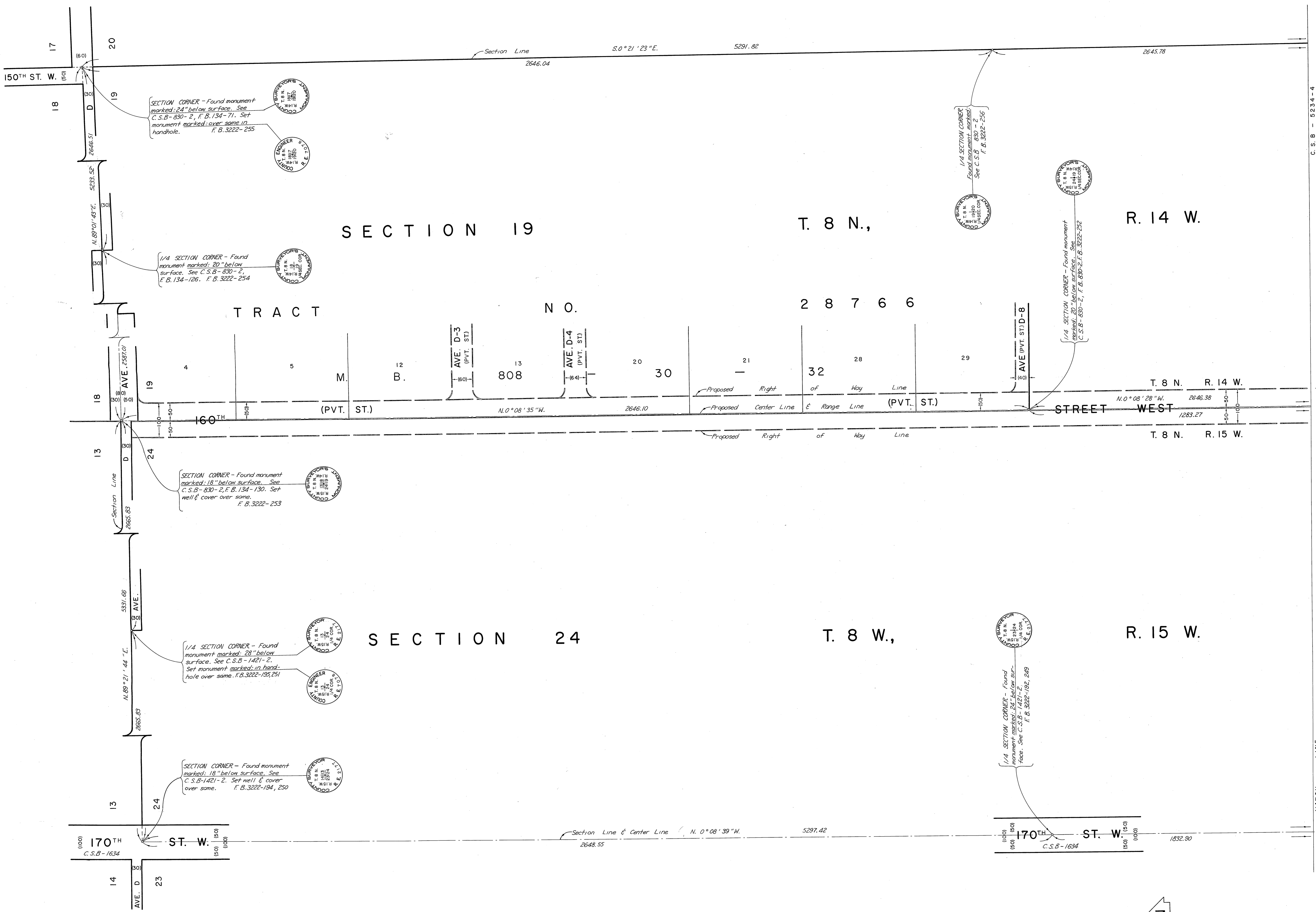


INDEX MAP  
NOT TO SCALE



COUNTY OF LOS ANGELES <b>DEPARTMENT OF          COUNTY ENGINEER</b> HARVEY T. BRANDT—COUNTY ENGINEER PREPARED BY SURVEY DIVISION GEORGE J. FRANCISCHINI—DIVISION ENGINEER SURVEYED BY J. S. COATES CHECKED BY C. WRIGHT DRAWN BY B. NUÑEZ, J. D. ALFARO	ALIGNMENT MAP OF <b>160TH STREET WEST</b> FROM <b>AVENUE G-8</b> TO <b>AVENUE - D</b>		COUNTY SURVEYOR'S MAP NO. <b>B-5234</b> SHEET 4 OF 5 SHEETS FILED: <i>George J. Francischini</i> DEPUTY SURVEYED JULY 1971 TO MARCH 1972 REFERENCE F. B. 3222	REVISION NO. BY DATE
	BASIS OF BEARINGS CALIFORNIA COORDINATE SYSTEM, ZONE 7		JOB NUMBER 0097-50	INDEX MAP NO. 72
			DRAWN BY B. NUÑEZ, J. D. ALFARO	
			FILED: <i>George J. Francischini</i> DEPUTY SURVEYED JULY 1971 TO MARCH 1972 REFERENCE F. B. 3222	

C. S. B. 2534-2



SECTION CORNER - Found monument marked 24" below surface. See C.S.B-830-2, F.B.134-71. Set monument marked over same in handhole. F.B.3222-255

1/4 SECTION CORNER - Found monument marked 20" below surface. See C.S.B-830-2, F.B.134-126. F.B.3222-254

SECTION CORNER - Found monument marked 18" below surface. See C.S.B-830-2, F.B.134-130. Set well & cover over same. F.B.3222-253

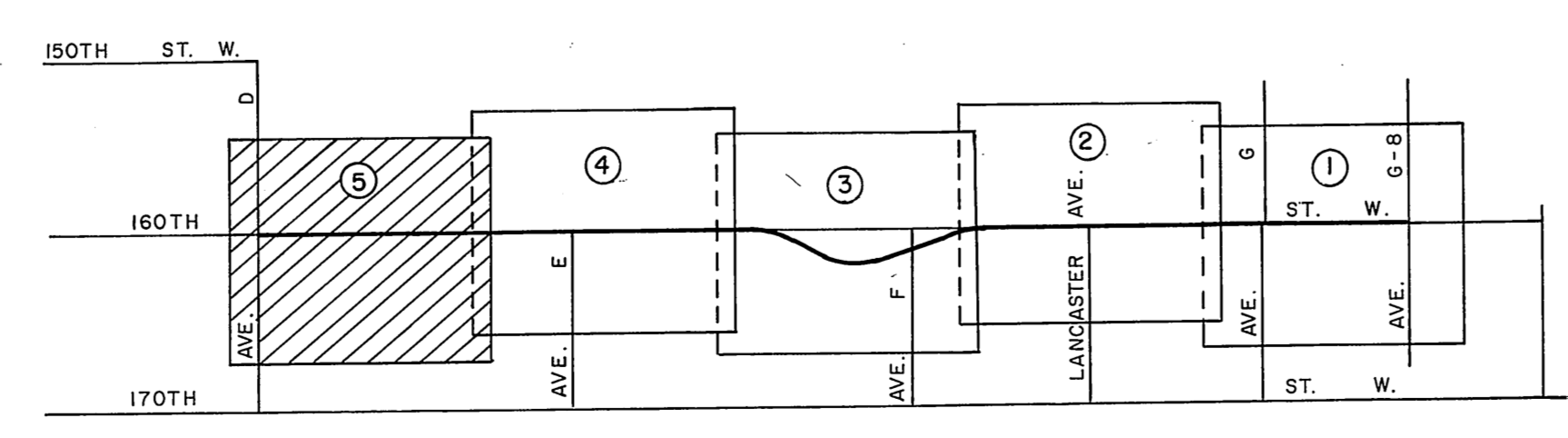
1/4 SECTION CORNER - Found monument marked 28" below surface. See C.S.B-1421-2. Set monument marked in handhole over same. F.B.3222-195,251

SECTION CORNER - Found monument marked 18" below surface. See C.S.B-1421-2. Set well & cover over same. F.B.3222-194,250

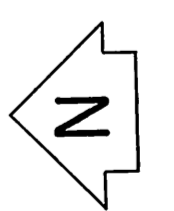
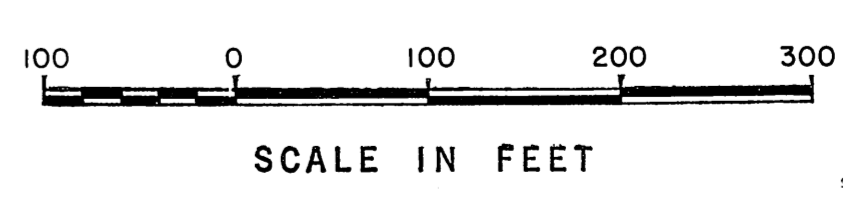
1/4 SECTION CORNER - Found monument marked 20" below surface. See C.S.B-830-2, F.B.134-126. F.B.3222-255

1/4 SECTION CORNER - Found monument marked 20" below surface. See C.S.B-830-2, F.B.134-126. F.B.3222-255

1/4 SECTION CORNER - Found monument marked 28" below surface. See C.S.B-1421-2. Set monument marked in handhole over same. F.B.3222-195,251



INDEX MAP NOT TO SCALE



COUNTY OF LOS ANGELES DEPARTMENT OF COUNTY ENGINEER HARVEY T. BRANDT—COUNTY ENGINEER PREPARED BY SURVEY DIVISION GEORGE J. FRANCESCHINI—DIVISION ENGINEER SURVEYED BY J. S. COATES CHECKED BY C. WRIGHT DRAWN BY B. NUNEZ J.D. ALFRED	ALIGNMENT MAP OF <b>160<sup>TH</sup> STREET WEST</b> FROM <b>AVENUE G-8</b> TO <b>AVENUE D</b> BASIS OF BEARINGS CALIFORNIA COORDINATE SYSTEM, ZONE 7		COUNTY SURVEYOR'S MAP NO. <b>B-5234</b> SHEET 5 OF 5 SHEETS FILED: <i>Richard J. Wright</i> 7/20/72 DEPUTY SURVEYED JULY 1971 TO MARCH 1972 REFERENCE F. B. 3222 JOB NUMBER 0397.50 INDEX MAP NO. 72	REVISION NO. BY DATE

C. S. B. - 5234-4

MATCH LINE

C. S. B. - 2534-2