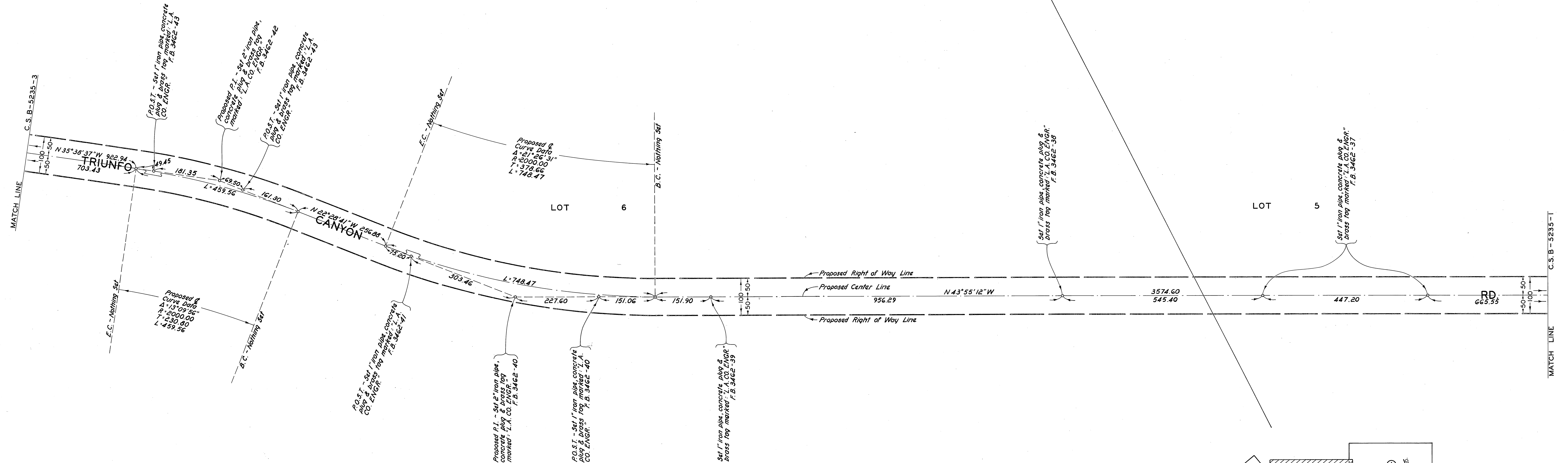


COUNTY OF LOS ANGELES DEPARTMENT OF COUNTY ENGINEER HARVEY T. BRANDT—COUNTY ENGINEER PREPARED BY SURVEY DIVISION GEORGE J. FRANCESCHINI—DIVISION ENGINEER SURVEYED BY R.C. DALE CHECKED BY I.A.B.F. DRAWN BY S.SUNABE	ALIGNMENT MAP OF TRIUNFO CANYON ROAD FROM KANAM ROAD TO NORTHWESTERLY LINE OF TRACT NO. 2804, M.B. 33-95 BASIS OF BEARINGS THE CENTER LINE OF KANAM ROAD (N 63° 53' 15" E) AS SHOWN ON C.S.B-2881		COUNTY SURVEYOR'S MAP NO. B-5235 SHEET 1 OF 3 SHEETS FILED: <u>March 2, 1976</u> <i>R.A. Montealegre</i> DEPUTY APR, 1969 - OCT, 1970 REFERENCE F.B. 3462	REVISION NO. BY DATE
	JOB NUMBER 0096.12		INDEX MAP NO. 159-037 144-037	

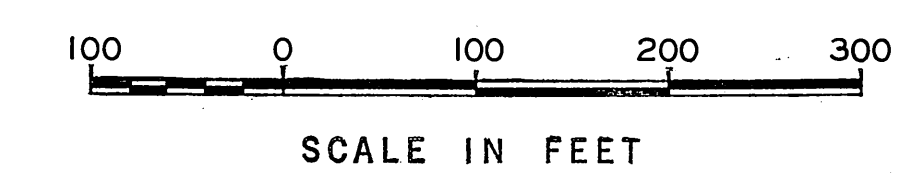
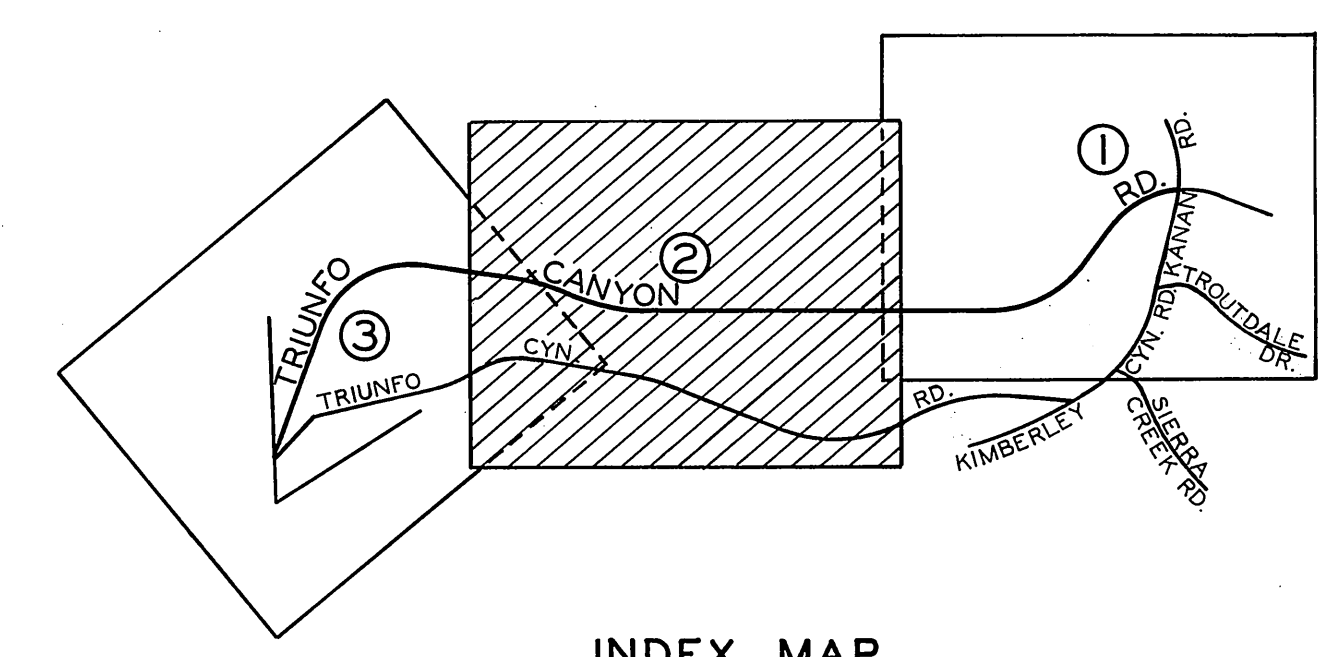
TRACT

NO.

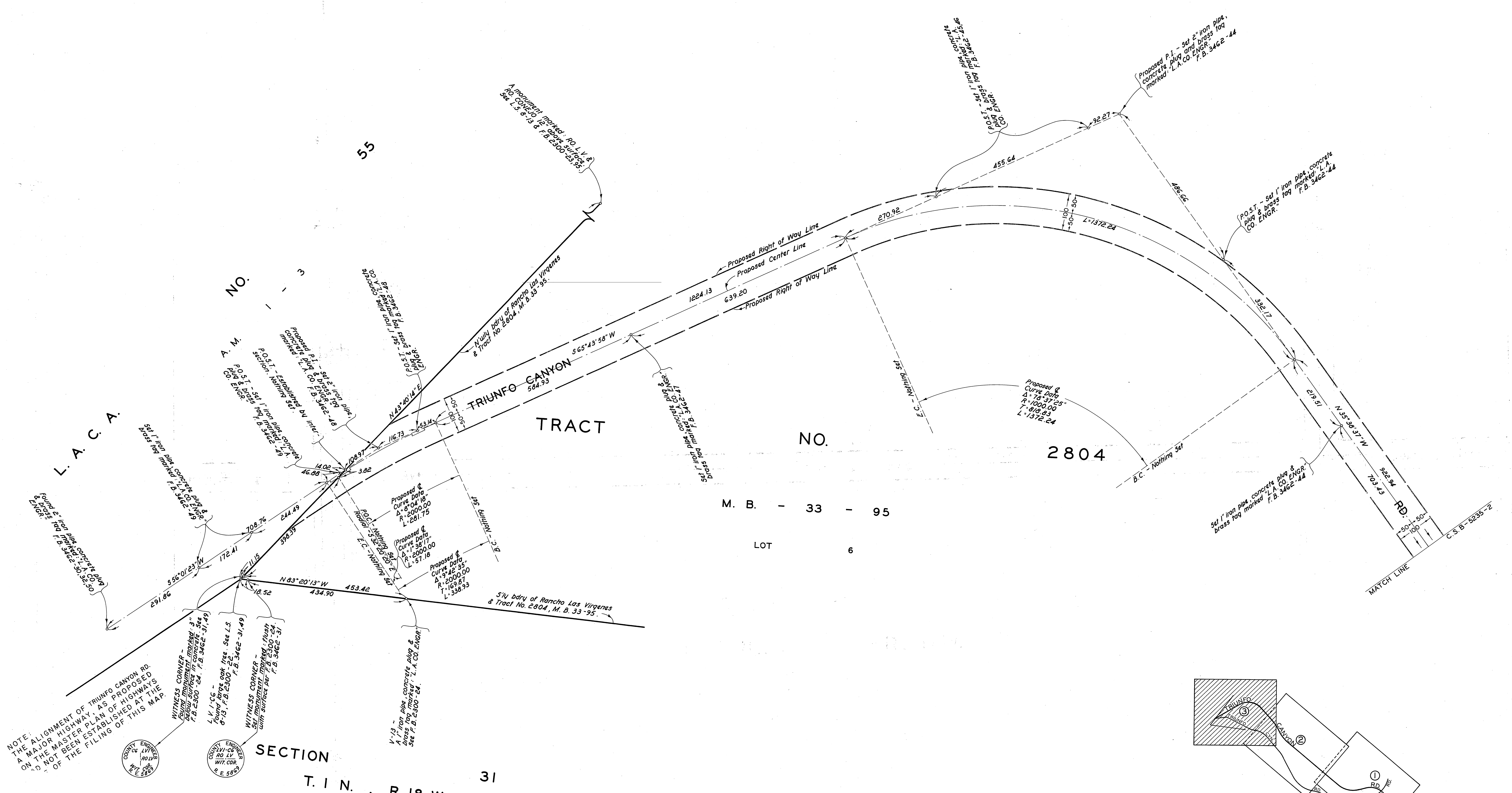
2804



M. B. - 33 - 95

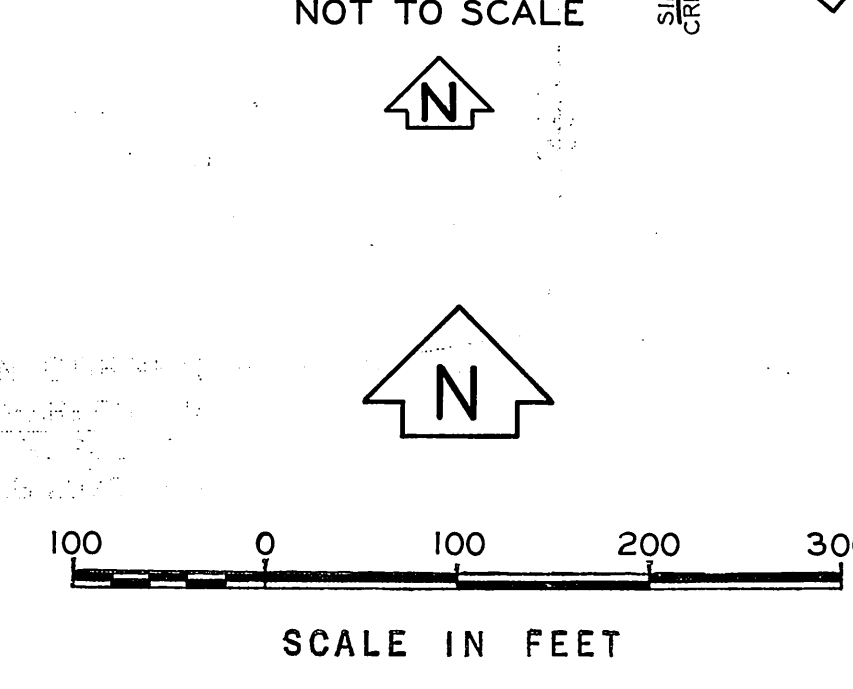
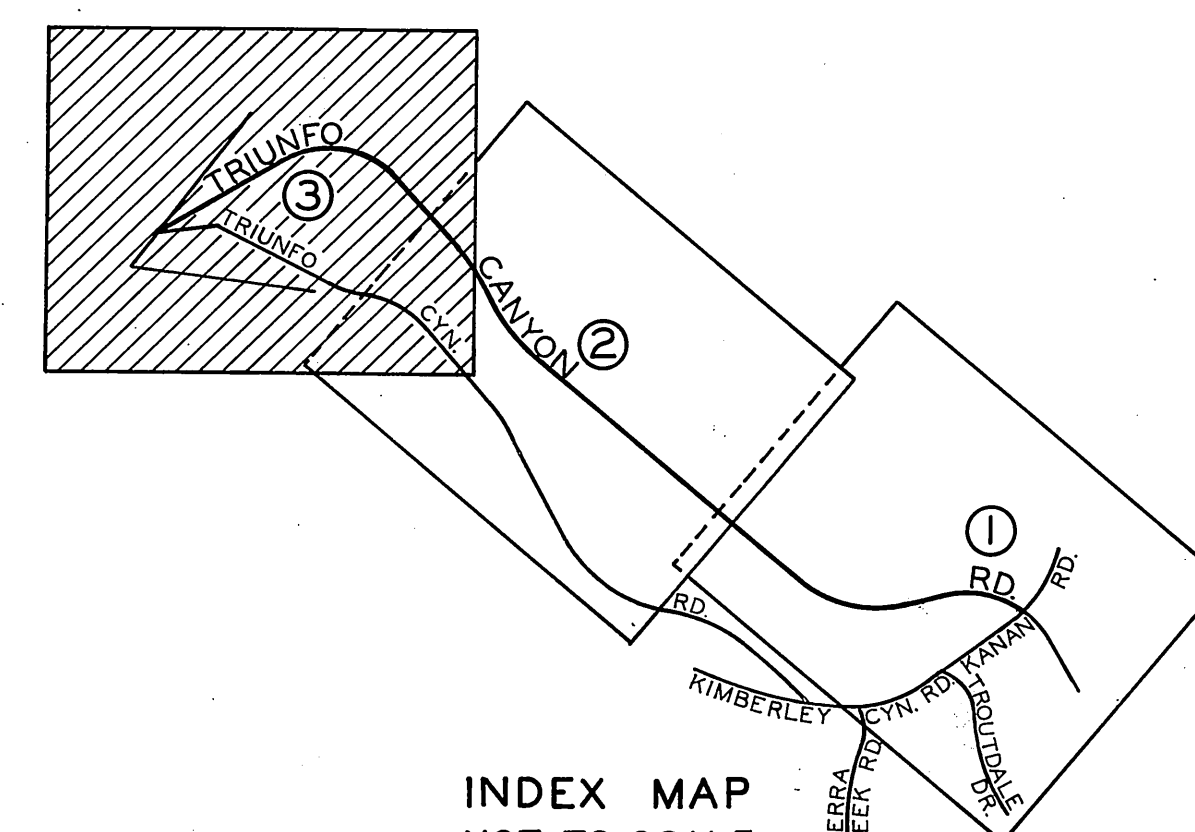


COUNTY OF LOS ANGELES DEPARTMENT OF COUNTY ENGINEER HARVEY T. BRANDT—COUNTY ENGINEER PREPARED BY SURVEY DIVISION GEORGE J. FRANCISCHINI—DIVISION ENGINEER SURVEYED BY <u>R.C. DALE</u> CHECKED BY <u>T. ABE</u> DRAWN BY <u>S. SUNABE</u>	ALIGNMENT MAP OF TRIUNFO CANYON ROAD FROM KANAN ROAD TO NORTHWESTERLY LINE OF TRACT NO. 2804, M.B. 33 - 95		COUNTY SURVEYOR'S MAP NO. B-5235 SHEET <u>2</u> OF <u>3</u> SHEETS FILED <u>FILE 2</u> 1976 <u>R. J. MITCHELL</u> DEPUTY SURVEYED APR. 1968 - OCT. 1970 REFERENCE F. B. 3462 JOB NUMBER 0096.12 INDEX MAP NO. 153-03 143-057	REVISION NO. BY DATE	
	BASIS OF BEARINGS THE CENTER LINE OF KANAN ROAD ($N 63^{\circ} 53' 15'' E$) AS SHOWN ON C.S.B-2881				



NOTE: THE ALIGNMENT OF TRIUNFO CANYON RD. AS PROPOSED IS SHOWN ON THE MASTER PLAN OF HIGHWAYS AND IS NOT BEING ESTABLISHED AT THE TIME OF THE FILING OF THIS MAP.

SECTION
T. 1 N., R. 18 W. 31



COUNTY OF LOS ANGELES DEPARTMENT OF COUNTY ENGINEER HARVEY T. BRANDT - COUNTY ENGINEER PREPARED BY SURVEY DIVISION GEORGE J. FRANCISCHINI - DIVISION ENGINEER SURVEYED BY R.C. DALE CHECKED BY I. ABF DRAWN BY S. SUNABE	ALIGNMENT MAP OF TRIUNFO CANYON ROAD FROM KANAN ROAD TO NORTHWESTERLY LINE OF TRACT NO. 2804, M.B. 33-95 BASIS OF BEARINGS THE CENTER LINE OF KANAN ROAD (N 63° 53' 15" E) AS SHOWN ON C.S.B-2881		COUNTY SURVEYOR'S MAP NO. B-5235 SHEET 3 OF 3 SHEETS FILED: <i>R. J. Mitchell</i> DEPUTY APR., 1968 - OCT., 1970 REFERENCE F.B. 3462 JOB NUMBER 0096.12 INDEX MAP NO. 124-037	REVISION NO. BY DATE