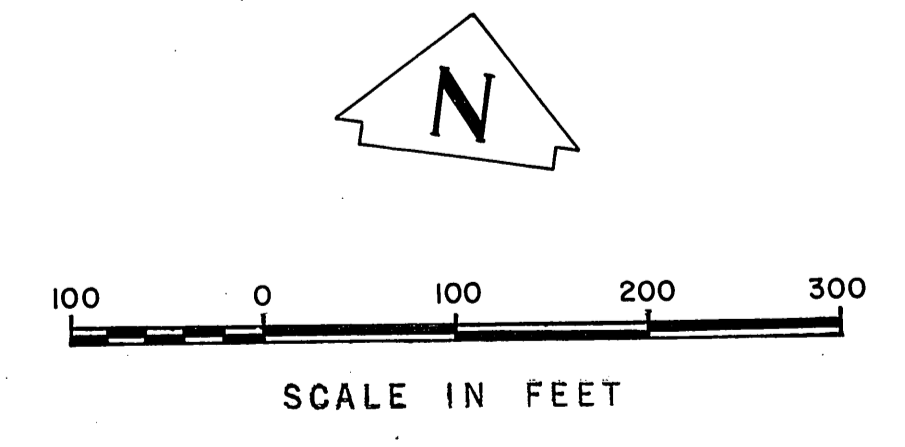
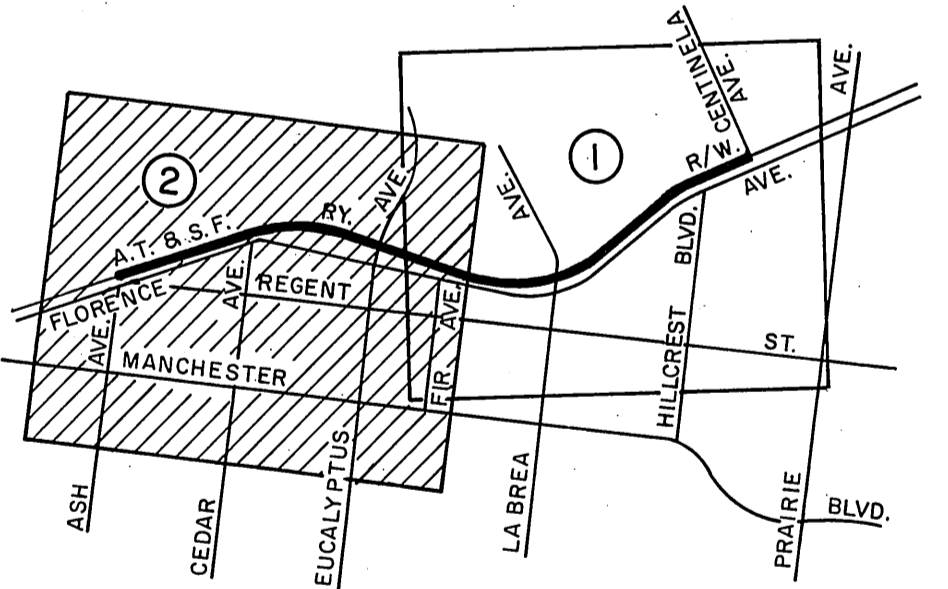
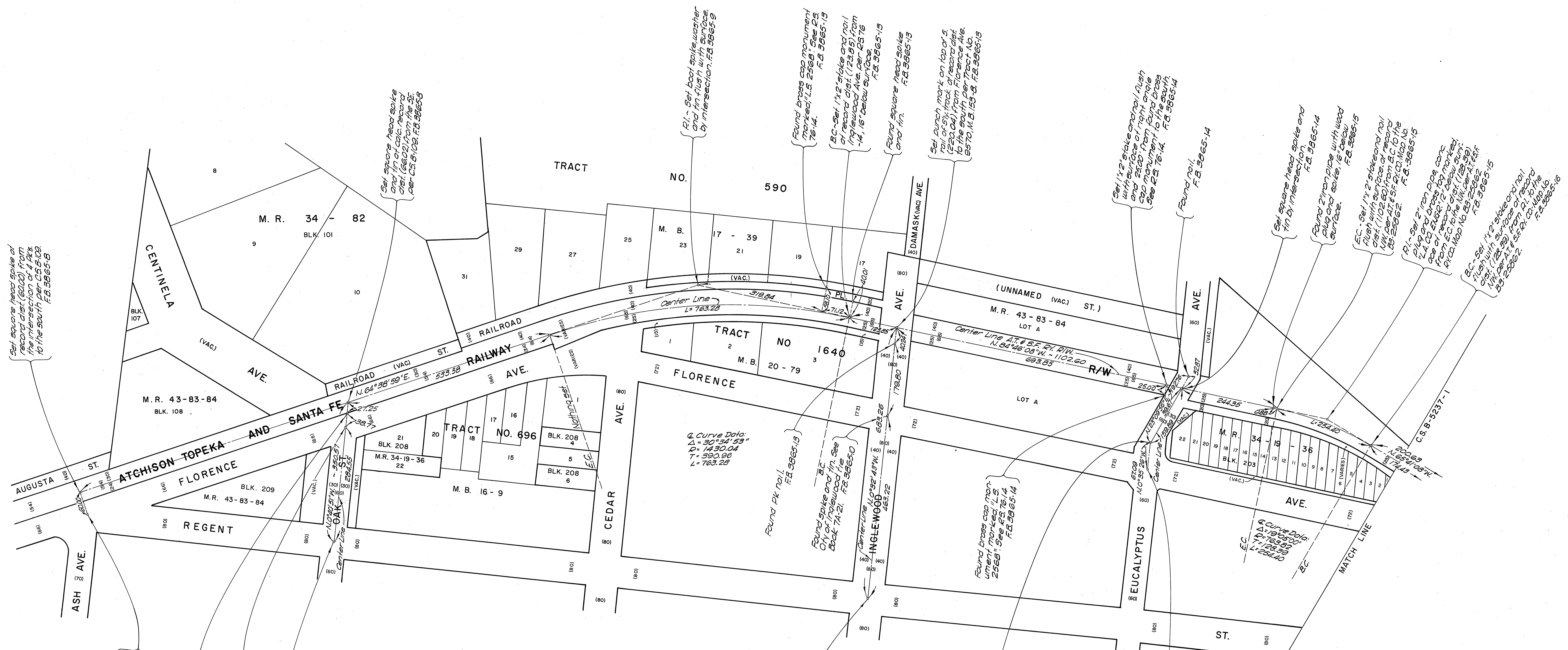


COUNTY OF LOS ANGELES DEPARTMENT OF COUNTY ENGINEER HARVEY T. BRANDT—COUNTY ENGINEER PREPARED BY SURVEY DIVISION GEORGE J. FRANCIS—DIVISION ENGINEER SURVEYED BY R.L. STRADER CHECKED BY G. BARR, R. HILARIO DRAWN BY S. KURACHI	CENTERLINE RETRACEMENT MAP ATCHISON TOPEKA AND SANTA FE RAILWAY FROM CENTINELA AVE. TO ASH AVE. BASIS OF BEARINGS THE CENTERLINE OF FIR AVE. (N. 0°33'55" W.) AS SHOWN ON C.S.B-5074		COUNTY SURVEYOR'S MAP NO. B-5237 SHEET 1 OF 2 SHEETS FILED: <u>JUL 25 1971</u> <u>R. J. [Signature]</u> SURVEYED JUNE - 1971 REFERENCE F.B. 1589 F.B. 3865 JOB NUMBER 0053-01	REVISION NO. BY DATE INDEX MAP NO. 24
----------------------------------------------------------------------------------------------------------------------------------------------------------------------------------------------------------------------------------------------------------------------	----------------------------------------------------------------------------------------------------------------------------------------------------------------------------------------------------------------------------------------------------	--	-----------------------------------------------------------------------------------------------------------------------------------------------------------------------------------------------------------------------	--------------------------------------------------------



Found intersection of
a lat nail on monument
at center See City of Ingle-
wood book No. 74-19
F.B. 3865-9

Found lead and lat. See
City of Inglewood the
book No. 74-18 F.B. 3865-5

Found square head spike
and iron pipe in casing
See City of Inglewood the
book No. 74-12 F.B. 3865-3

Found lat. nail. See City
of Inglewood the center-line
the book No. 74-21
F.B. 3865-7

Found 6" iron pipe with
2 1/2" spike and nail in
casing at Inglewood
See City of Inglewood
book No. 74-19 and Tract
No. 6970, M.B. 63-9
F.B. 3865-11

Anole Point.
Found 2" iron pipe in casing.
See City of Inglewood
book No. 74-21, M.B. 63-9
F.B. 3865-12

Found spike and lat. See
City of Inglewood book
No. 74-22 lat. nail in
casing. See same with
lat. nail on surface and in
casing. See City of Inglewood
book No. 74-20, M.B. 63-9
F.B. 3865-249

COUNTY OF LOS ANGELES DEPARTMENT OF COUNTY ENGINEER HARVEY T. BRANDT—COUNTY ENGINEER PREPARED BY SURVEY DIVISION GEORGE J. FRANCESCO—DIVISION ENGINEER SURVEYED BY R. L. STRADER CHECKED BY G. BARR, R. HILARIO DRAWN BY S. KURACHI	CENTERLINE RETRACEMENT MAP ATCHISON TOPEKA AND SANTA FE RAILWAY FROM CENTINELA AVE. TO ASH AVE. BASIS OF BEARINGS THE CENTERLINE OF FIR AVE. (N. 0°33'55"W.) AS SHOWN ON C.S.B-5074		COUNTY SURVEYOR'S MAP NO. B-5237 SHEET 2 OF 2 SHEETS FILED: <u>June 28, 1974</u> DEPUTY SURVEYOR JUNE - 1974 REFERENCE F.B. 1589 F.B. 3865 JOB NUMBER 0053.01 INDEX MAP NO. 24	REVISION NO. BY DATE