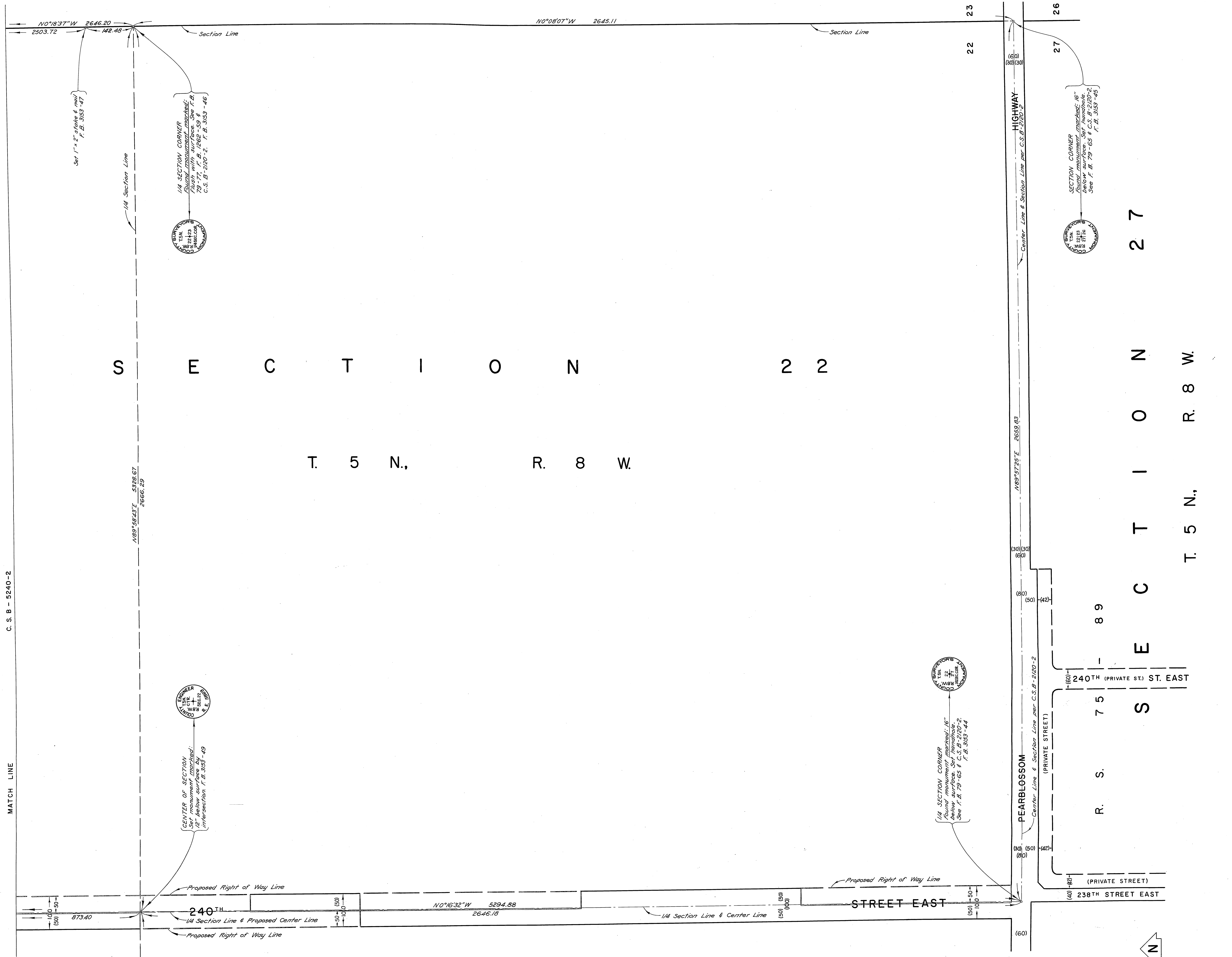


C 2 B - 2 5 4 0 - 1



C. S. B - 5240-2

MATCH LINE

S E C T I O N 2 2

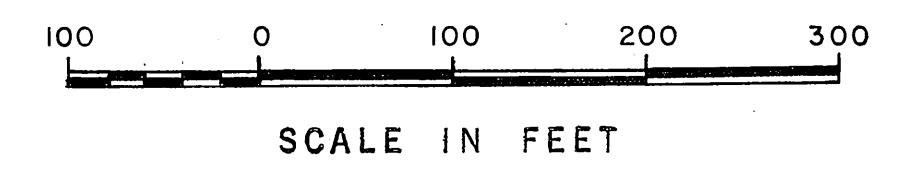
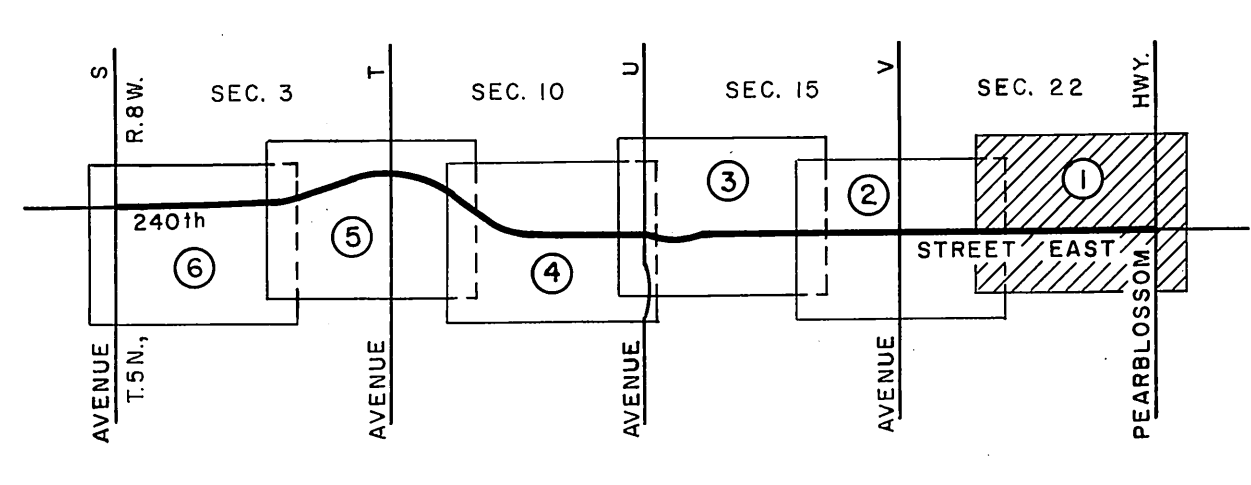
T. 5 N., R. 8 W.

S E C T I O N 2 7

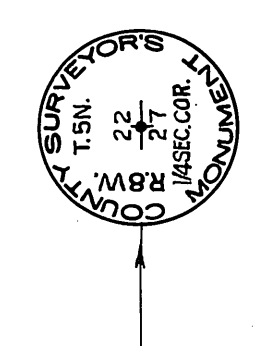
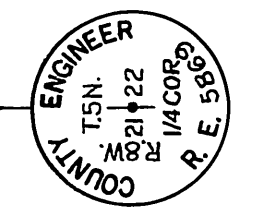
R. S. 7 5

R. S. 8 9

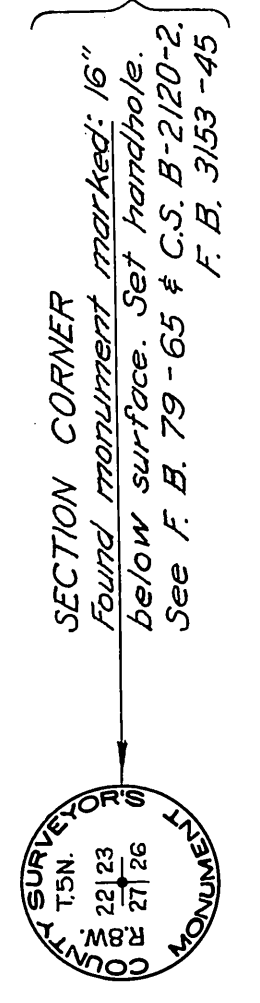
T. 5 N., R. 8 W.



1/4 SECTION CORNER
Found County Surveyors
monument disturbed.
Removed same & set
monument marked 12"
below surface by ties per
F. B. 79-75. F. B. 3153-52



1/4 SECTION CORNER
Found monument marked 16"
below surface. Set handle.
See F. B. 79-65 & C.S.B. 2100-2
F. B. 3153-44



SECTION CORNER
Found monument marked 16"
below surface. Set handle.
See F. B. 79-65 & C.S.B. 2100-2
F. B. 3153-46

COUNTY OF LOS ANGELES
DEPARTMENT OF
COUNTY ENGINEER
HARVEY T. BRANDT—COUNTY ENGINEER
PREPARED BY
SURVEY DIVISION
GEORGE J. FRANCISCHINI—DIVISION ENGINEER
SURVEYED BY J. S. COATES
CHECKED BY G. O. BAILEY
DRAWN BY J. F. MERRILL

ALIGNMENT MAP OF
240TH STREET EAST
FROM
PEARBLOSSOM HIGHWAY
TO
AVENUE S

BASIS OF BEARINGS
THE SOUTH LINE OF SECTION 22, T. 5N., R. 8W.,
(N. 89°57'25"E.) AS SHOWN ON C. S. B - 2120 - 2.

COUNTY SURVEYOR'S MAP NO. B-5240		REVISION
SHEET 1 OF 6 SHEETS		NO. BY DATE
FILED: June 28, 1976		
SURVEYED BY R. J. MITCHELL		
NOV. - DEC. 1970		
REFERENCE		
F. B. 3153 - 41 - 75		
JOB NUMBER 0096.64	INDEX MAP NO. 67	

C 2 B - 2 5 4 0 - 1

SECTION 15

T. 5 N., R. 8 W.

189°58'21"W (2664.73 per F.B. 2666-9)

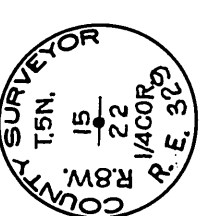
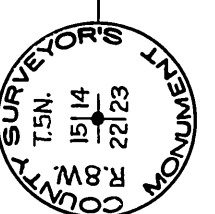
SECTION 22

T. 5 N., R. 8 W.

N0°18'37"W 2646.20
2503.72

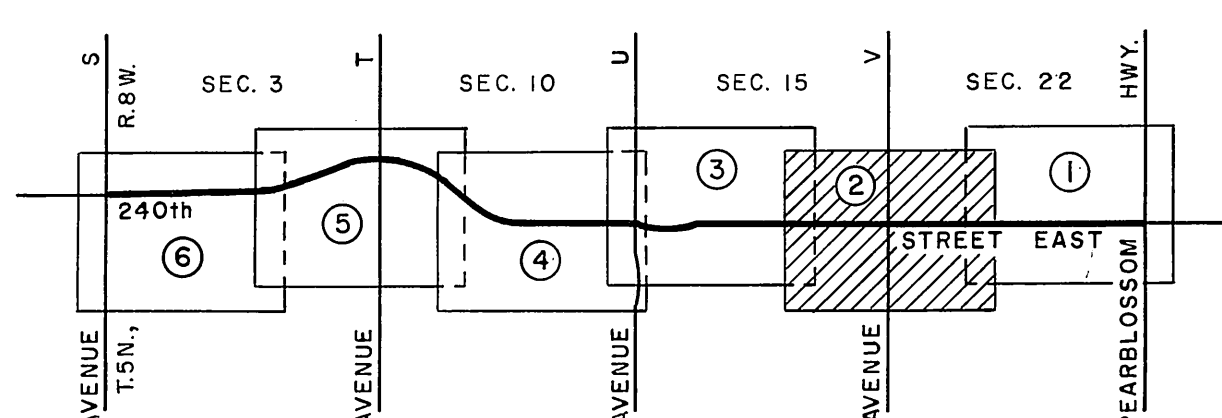
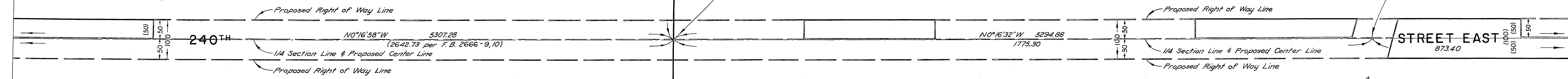
N0°19'46"W (2645.38 per F.B. 2666-8)

SECTION CORNER
Found monument marked
with survey data of
1982-80 per F.B. 2666-9 &
C.S.B - 2120-2, F.B. 3153-48

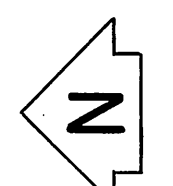
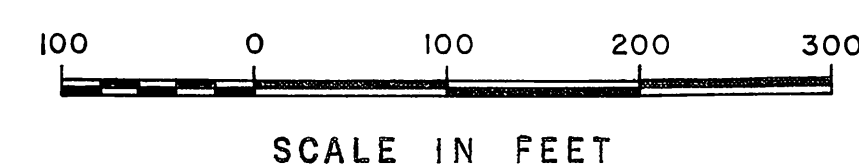


1/4 SECTION CORNER
Found monument marked
with survey data of
1982-80 per F.B. 2666-9 &
C.S.B - 2120-2, F.B. 3153-51

Set 1"x2" stake & nail.
F.B. 3153-50.



INDEX MAP
NOT TO SCALE



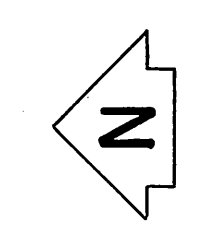
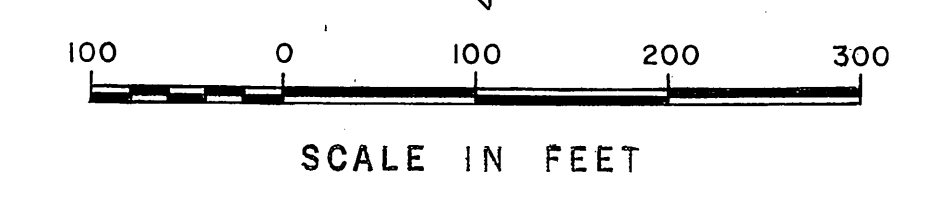
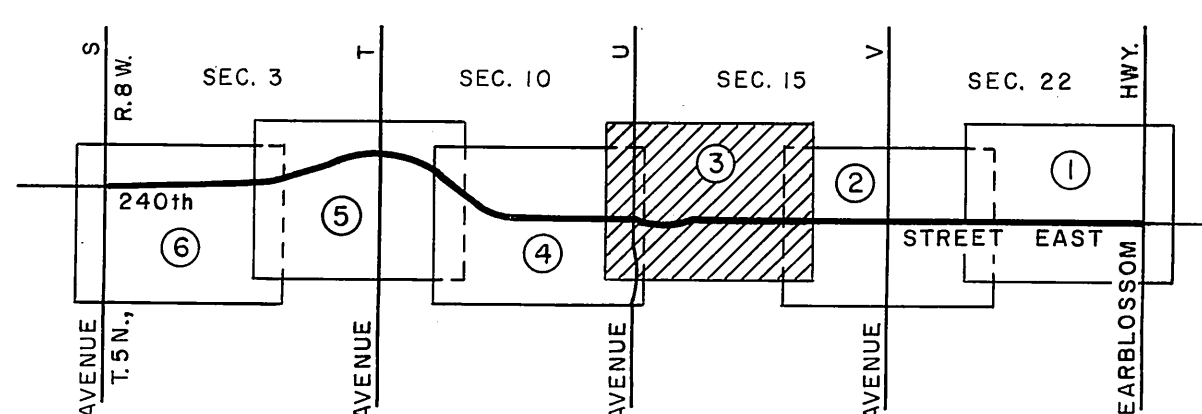
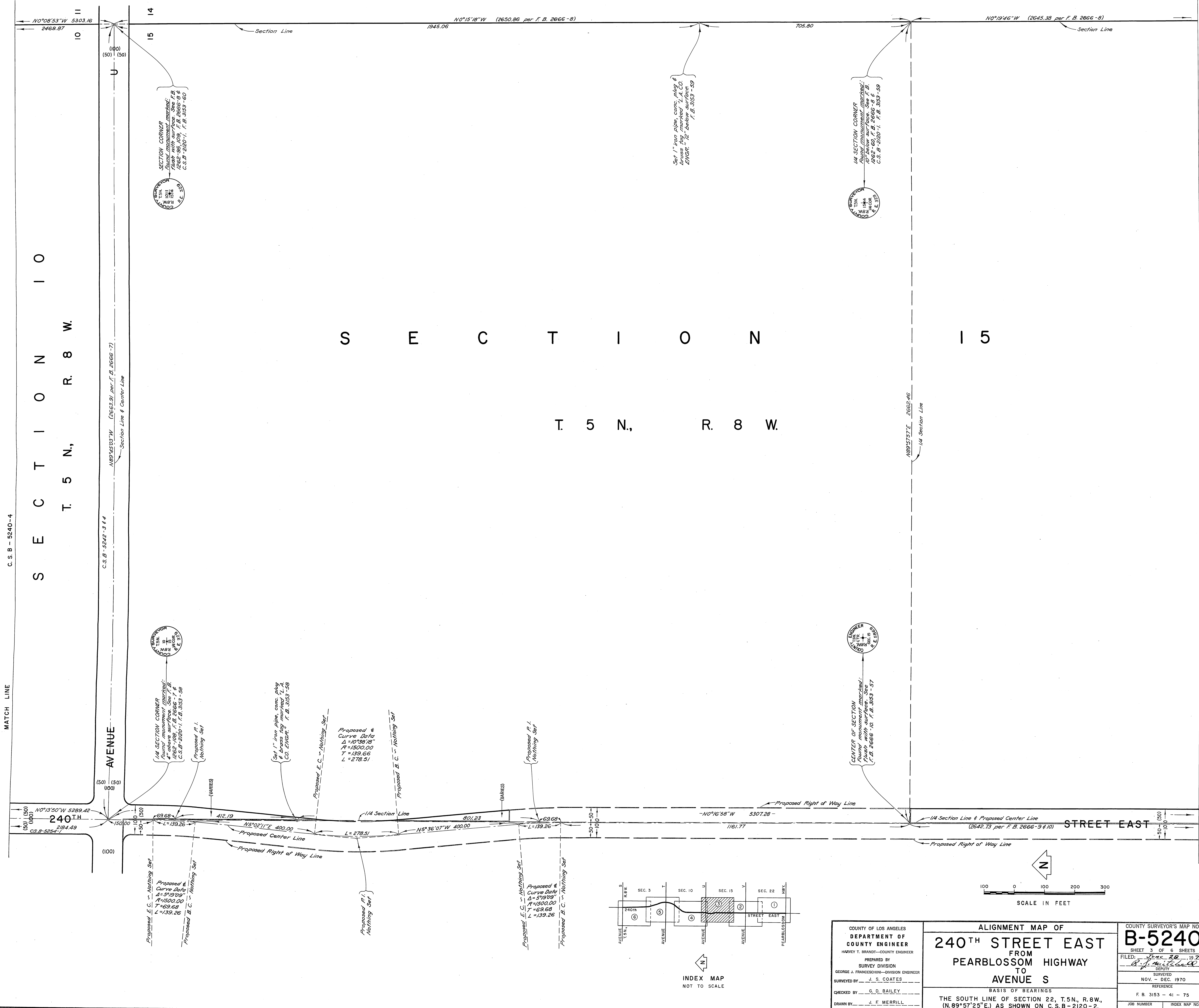
COUNTY OF LOS ANGELES
DEPARTMENT OF
COUNTY ENGINEER
HARVEY T. BRANDT—COUNTY ENGINEER
PREPARED BY
SURVEY DIVISION
GEORGE J. FRANCISCHINI—DIVISION ENGINEER
SURVEYED BY J. S. COATES
CHECKED BY G. D. BAILEY
DRAWN BY J. F. MERRILL

ALIGNMENT MAP OF
240TH STREET EAST
FROM
PEARBLOSSOM HIGHWAY
TO
AVENUE S
BASIS OF BEARINGS
THE SOUTH LINE OF SECTION 22, T.5N., R.8W.,
(N.89°57'25\"/>

COUNTY SURVEYOR'S MAP NO.
B-5240
SHEET 2 OF 6 SHEETS
FILED Jan 28 1970
BY R. J. Whitehall
DEPUTY
NOV - DEC 1970
REFERENCE
F. B. 3153 - 41 - 75
JOB NUMBER 009664 INDEX MAP NO. 67

REVISION		
NO.	BY	DATE

C 2 B - 2 5 4 0 - 2



COUNTY OF LOS ANGELES DEPARTMENT OF COUNTY ENGINEER HARVEY T. BRANDT—COUNTY ENGINEER PREPARED BY SURVEY DIVISION GEORGE J. FRANCISCHINI—DIVISION ENGINEER SURVEYED BY J. S. COATES CHECKED BY G. D. BAILEY DRAWN BY J. F. MERRILL	ALIGNMENT MAP OF 240TH STREET EAST FROM PEARBLOSSOM HIGHWAY TO AVENUE S		COUNTY SURVEYOR'S MAP NO. B-5240 SHEET 3 OF 6 SHEETS FILED: <i>Dec 28</i> , 1970 <i>G. J. Merrill</i> DEPUTY SURVEYED NOV. - DEC. 1970 REFERENCE F. B. 3153 - 41 - 75 JOB NUMBER 009664	REVISION NO. BY DATE
	BASIS OF BEARINGS THE SOUTH LINE OF SECTION 22, T. 5 N., R. 8 W., (N. 89° 57' 25" E.) AS SHOWN ON C. S. B - 2120 - 2.			

C. S. B - 5240 - 4

C. S. B - 5240 - 2

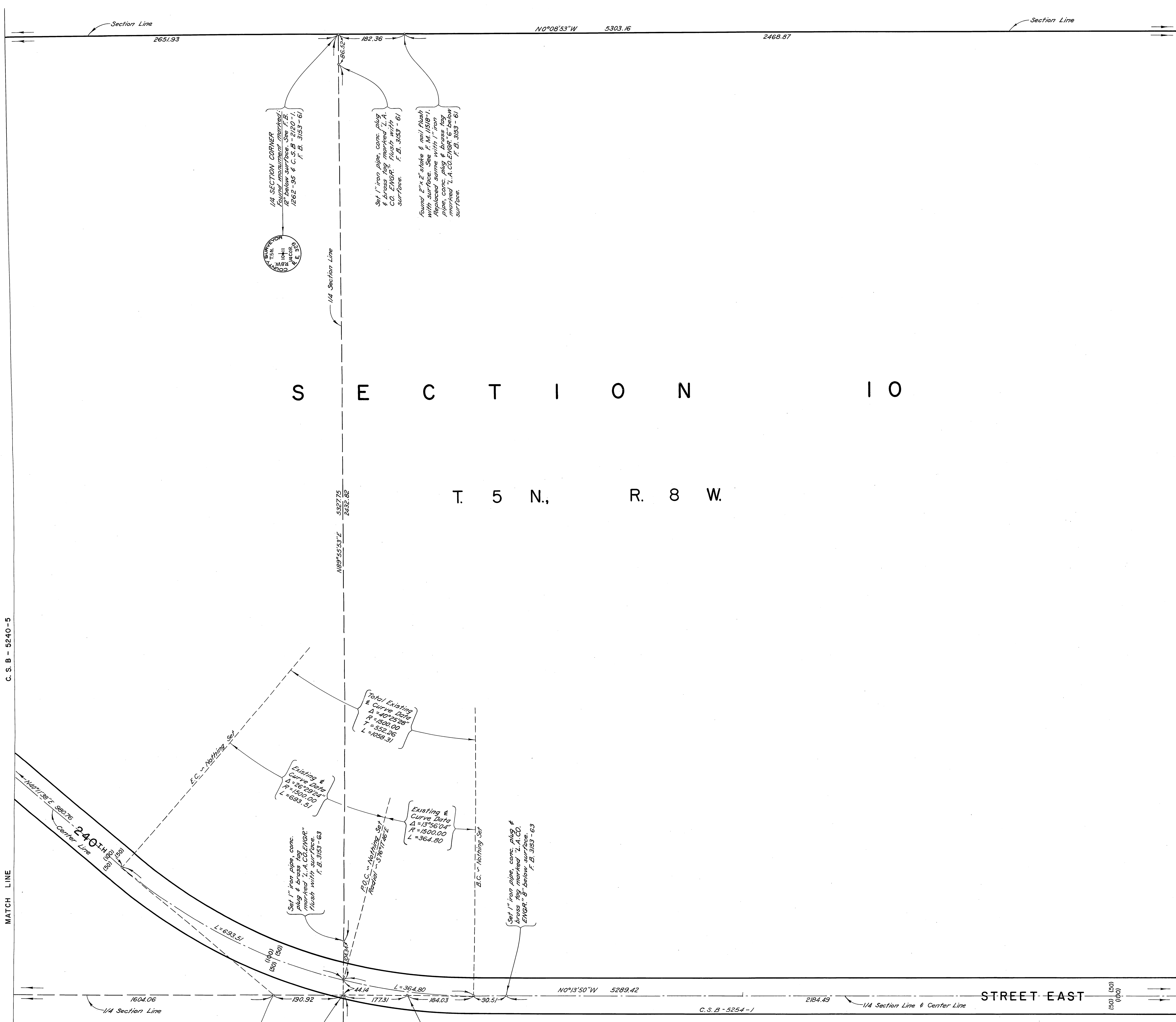
S E C T I O N I O
T 5 N., R. 8 W.

S E C T I O N 1 5
T 5 N., R. 8 W.

MATCH LINE

MATCH LINE

C 2 B 2 5 4 0 4

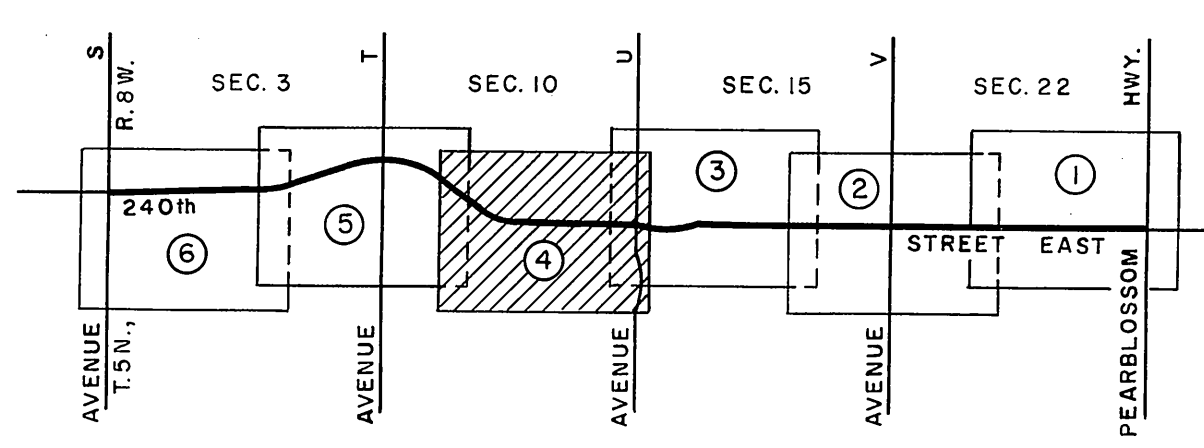


S E C T I O N 1 0

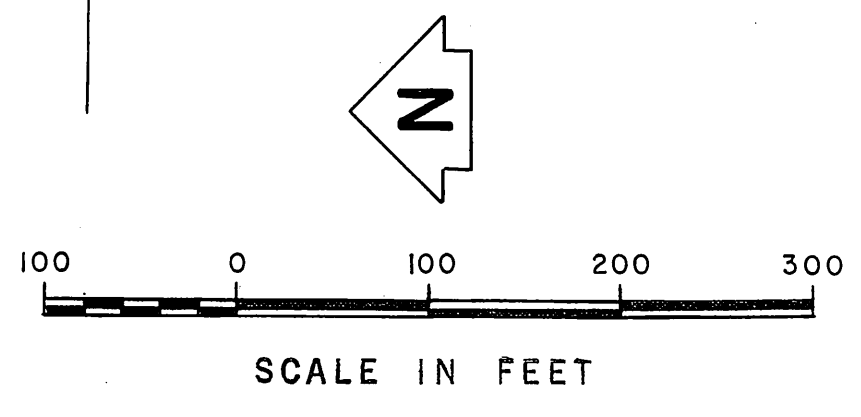
T. 5 N., R. 8 W.

C. S. B - 5240-5

C. S. B - 5240-3



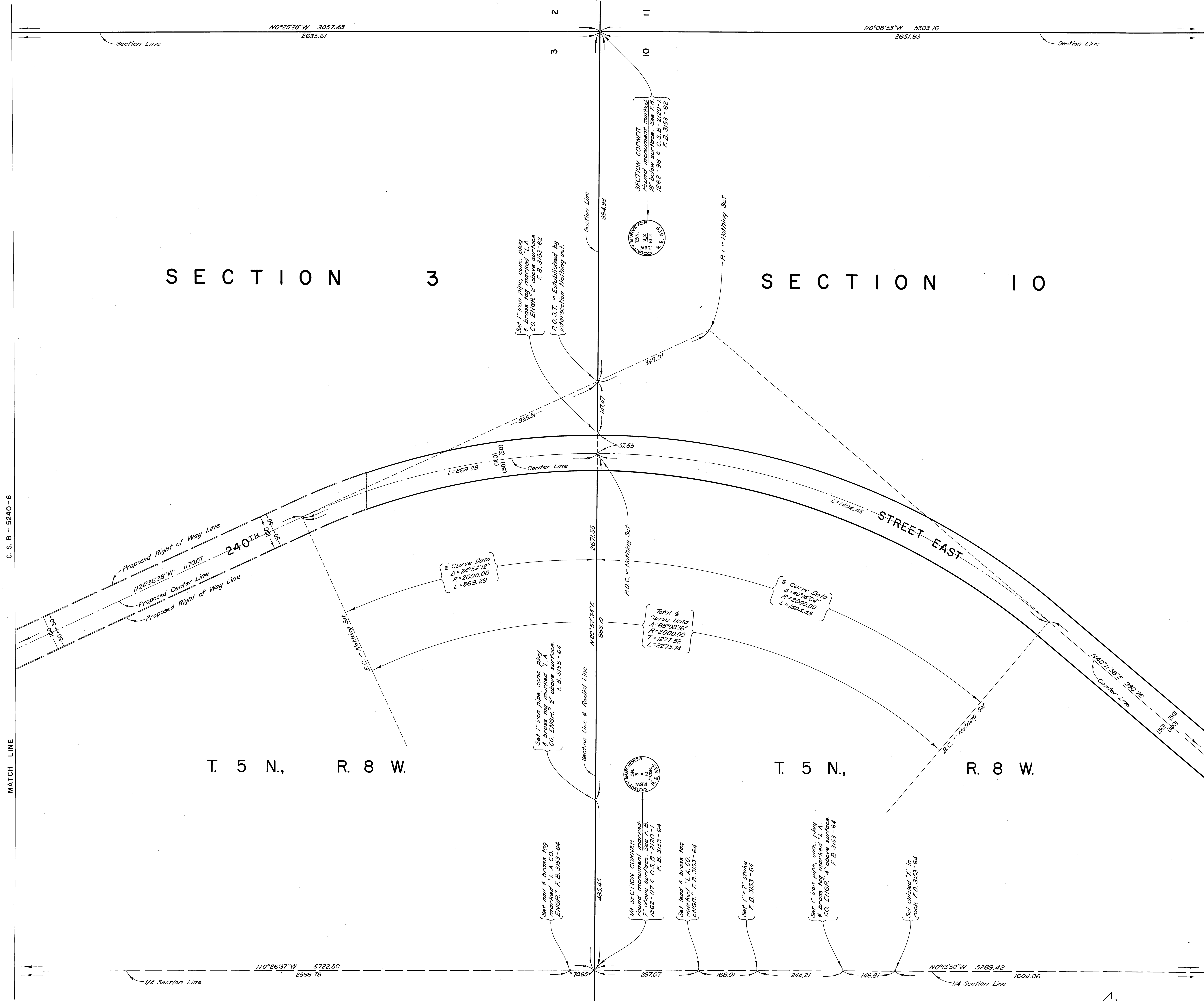
INDEX MAP NOT TO SCALE



COUNTY OF LOS ANGELES
 DEPARTMENT OF
 COUNTY ENGINEER
 HARVEY T. BRANDT—COUNTY ENGINEER
 PREPARED BY
 SURVEY DIVISION
 GEORGE J. FRANCISCHINI—DIVISION ENGINEER
 SURVEYED BY — J. S. COATES —
 CHECKED BY — G. D. BAILEY —
 DRAWN BY — J. F. MERRILL —

ALIGNMENT MAP OF
240TH STREET EAST
 FROM
PEARBLOSSOM HIGHWAY
 TO
AVENUE S
 BASIS OF BEARINGS
 THE SOUTH LINE OF SECTION 22, T.5N., R.8W.,
 (N.89°57'25"E.) AS SHOWN ON C.S.B-2120-2.

COUNTY SURVEYOR'S MAP NO. B-5240		REVISION	
SHEET 4 OF 6 SHEETS		NO.	BY DATE
FILED: <u>June 28, 1976</u>			
DRAWN BY: <u>B. J. Mitchell</u>			
SURVEYED			
NOV. - DEC. 1970			
REFERENCE			
F. B. 3153 - 41 - 75			
JOB NUMBER	INDEX MAP NO.		
009664	67		

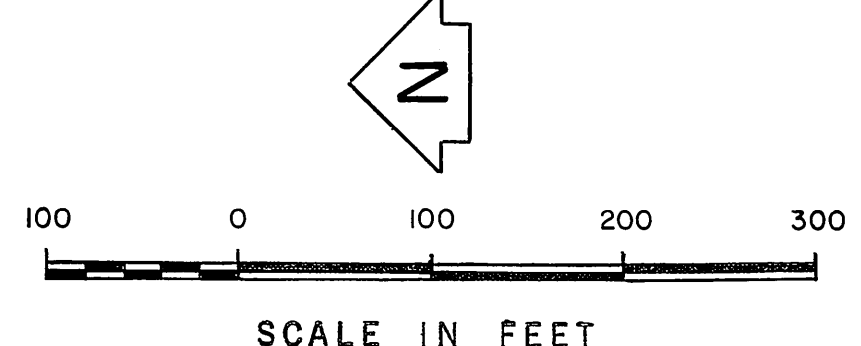
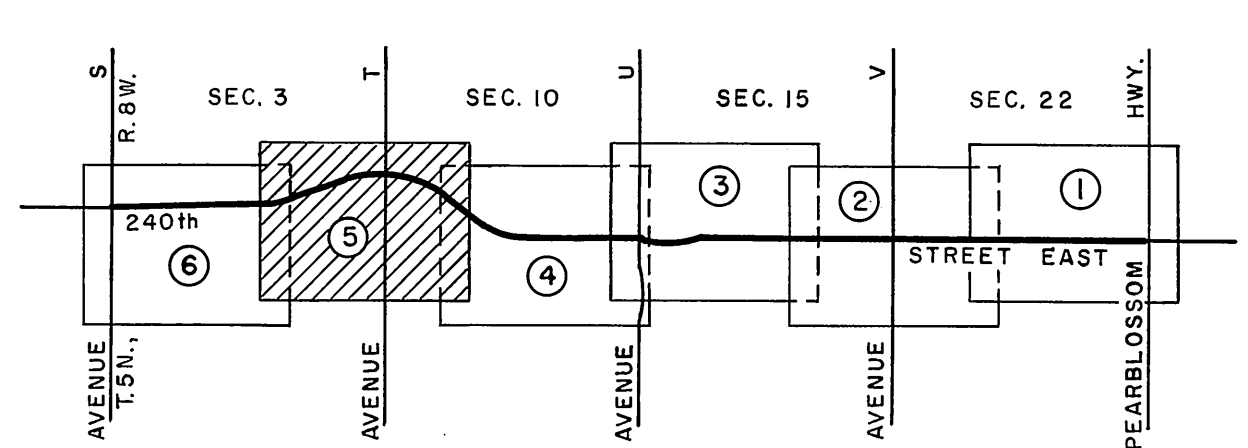


C. S. B. - 5240 - 6

C. S. B. - 5240 - 4

MATCH LINE

MATCH LINE



COUNTY OF LOS ANGELES
 DEPARTMENT OF
 COUNTY ENGINEER
 HARVEY T. BRANDT—COUNTY ENGINEER
 PREPARED BY
 SURVEY DIVISION
 GEORGE J. FRANCESCHINI—DIVISION ENGINEER
 SURVEYED BY — J. S. COATES —
 CHECKED BY — G. D. BAILEY —
 DRAWN BY — J. F. MERRILL —

ALIGNMENT MAP OF
240TH STREET EAST
 FROM
PEARBLOSSOM HIGHWAY
 TO
AVENUE S

BASIS OF BEARINGS
 THE SOUTH LINE OF SECTION 22, T.5N., R.8W.,
 (N.89°57'25"E.) AS SHOWN ON C.S.B-2120-2.

COUNTY SURVEYOR'S MAP NO.
B-5240
 SHEET 5 OF 6 SHEETS
 FILED: *Miss. 28, 1976*
G. J. Mitchell
 DEPUTY
 SURVEYED
 NOV. - DEC. 1970
 REFERENCE
 F. B. 3153 - 41 - 75
 JOB NUMBER
 0096-64
 INDEX MAP NO.
 67

REVISION		
NO.	BY	DATE

