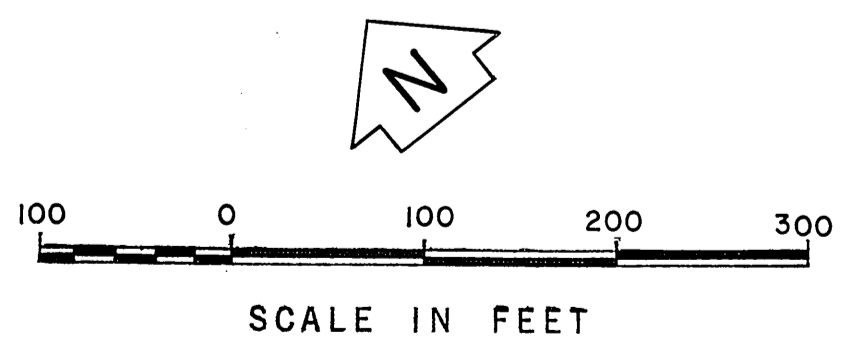
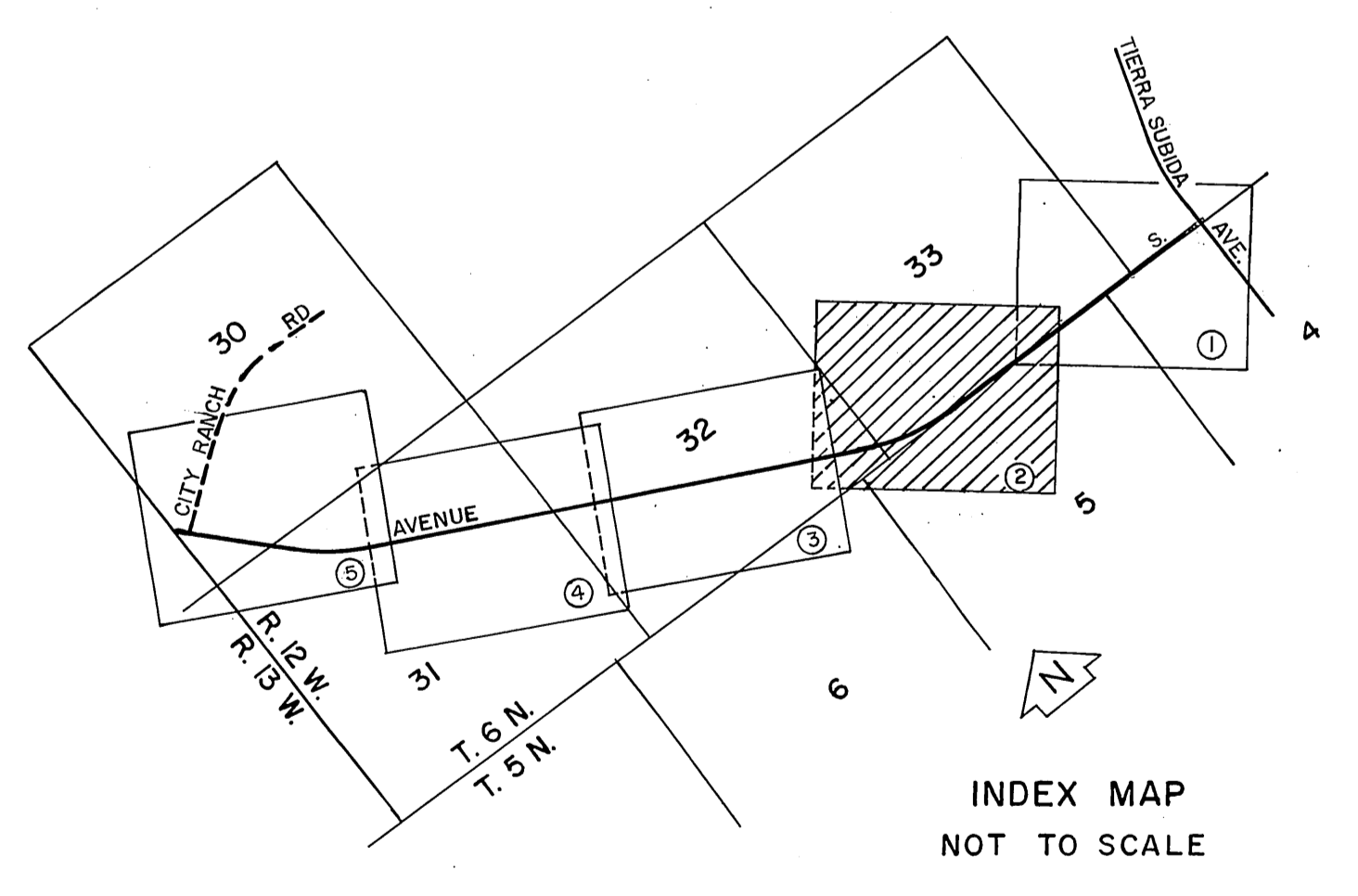
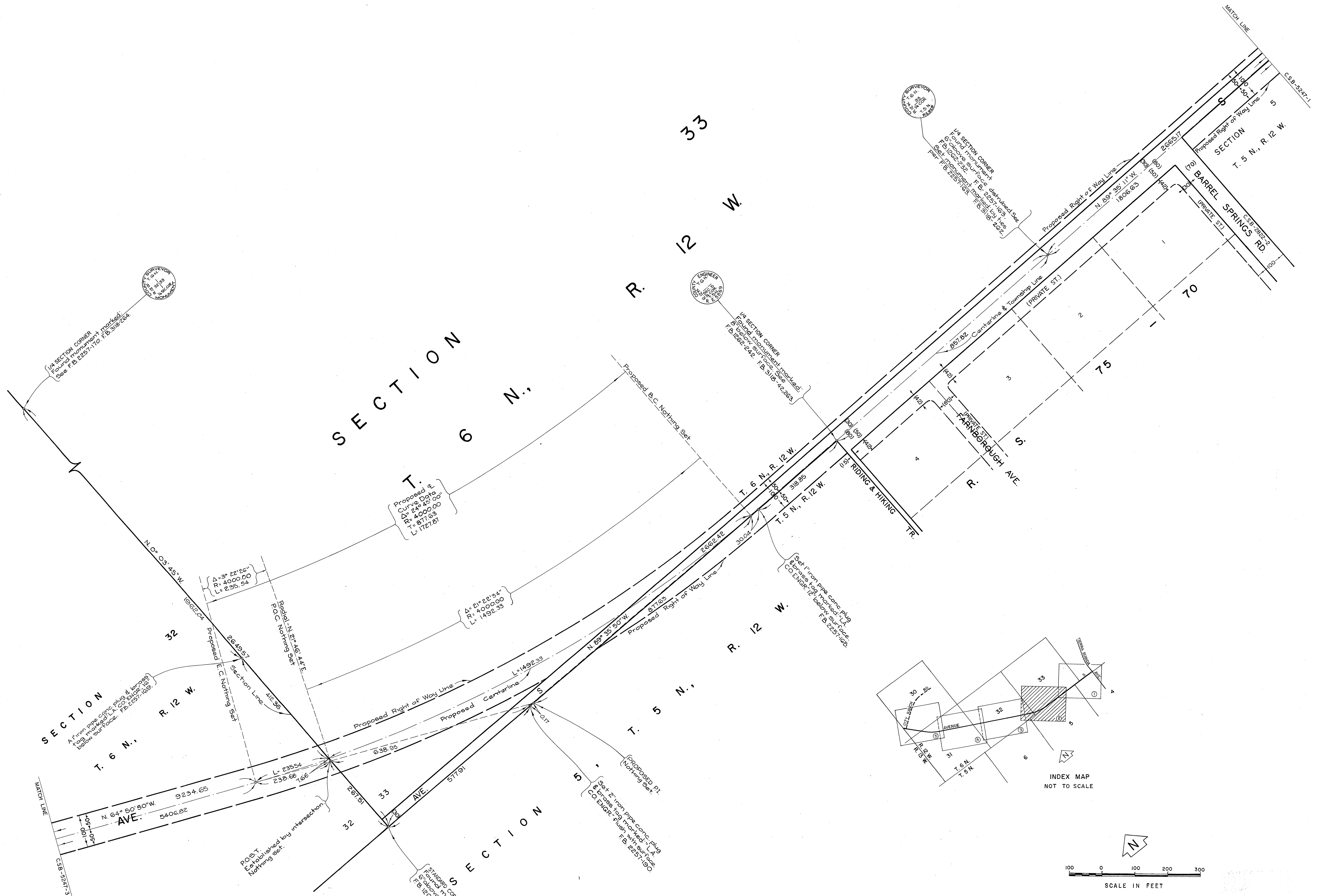
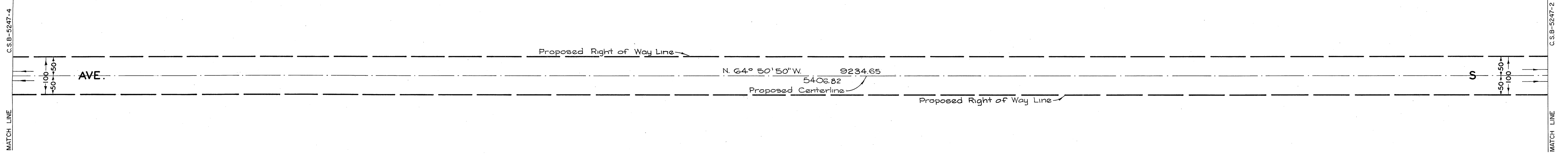


COUNTY OF LOS ANGELES DEPARTMENT OF COUNTY ENGINEER HARVEY T. BRANDT—COUNTY ENGINEER PREPARED BY SURVEY DIVISION GEORGE J. FRANCESCHINI—DIVISION ENGINEER SURVEYED BY <u>R. BITTLE, W. VDGE.</u> CHECKED BY <u>D. SAPPPELL</u> DRAWN BY <u>C. MOTEN, S. SUNABE</u>	ALIGNMENT MAP OF AVENUE S FROM TERRA SUBIDA AVENUE TO CITY RANCH ROAD		COUNTY SURVEYOR'S MAP NO. B-5247	REVISION NO. BY DATE	
	SHEET 1 OF 5 SHEETS FILED: <u>June 28, 1976</u> <u>Ray Mitchell</u> DEPUTY SURVEYED AUGUST 1973 & MARCH 1975		REFERENCE F. B. 3118, F. B. 2257		
	BASIS OF BEARINGS THE WLY LINE OF SECTION 30 T.6N., R.12W. (N. 0° 15' 50" W) AS SHOWN ON C.S.B 5246-5		JOB NUMBER 0095.55	INDEX MAP NO. 64 & 309-237	

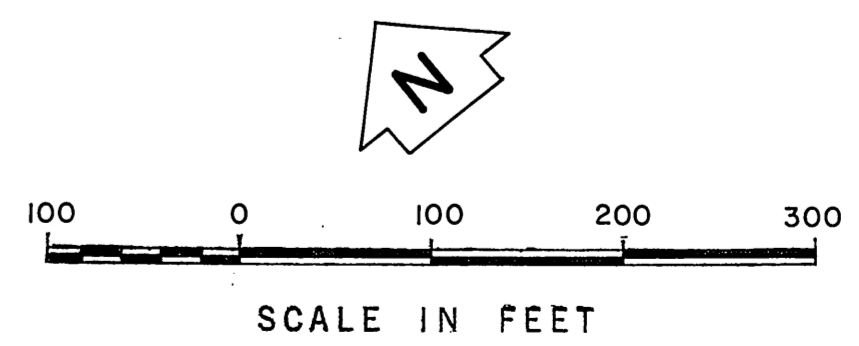
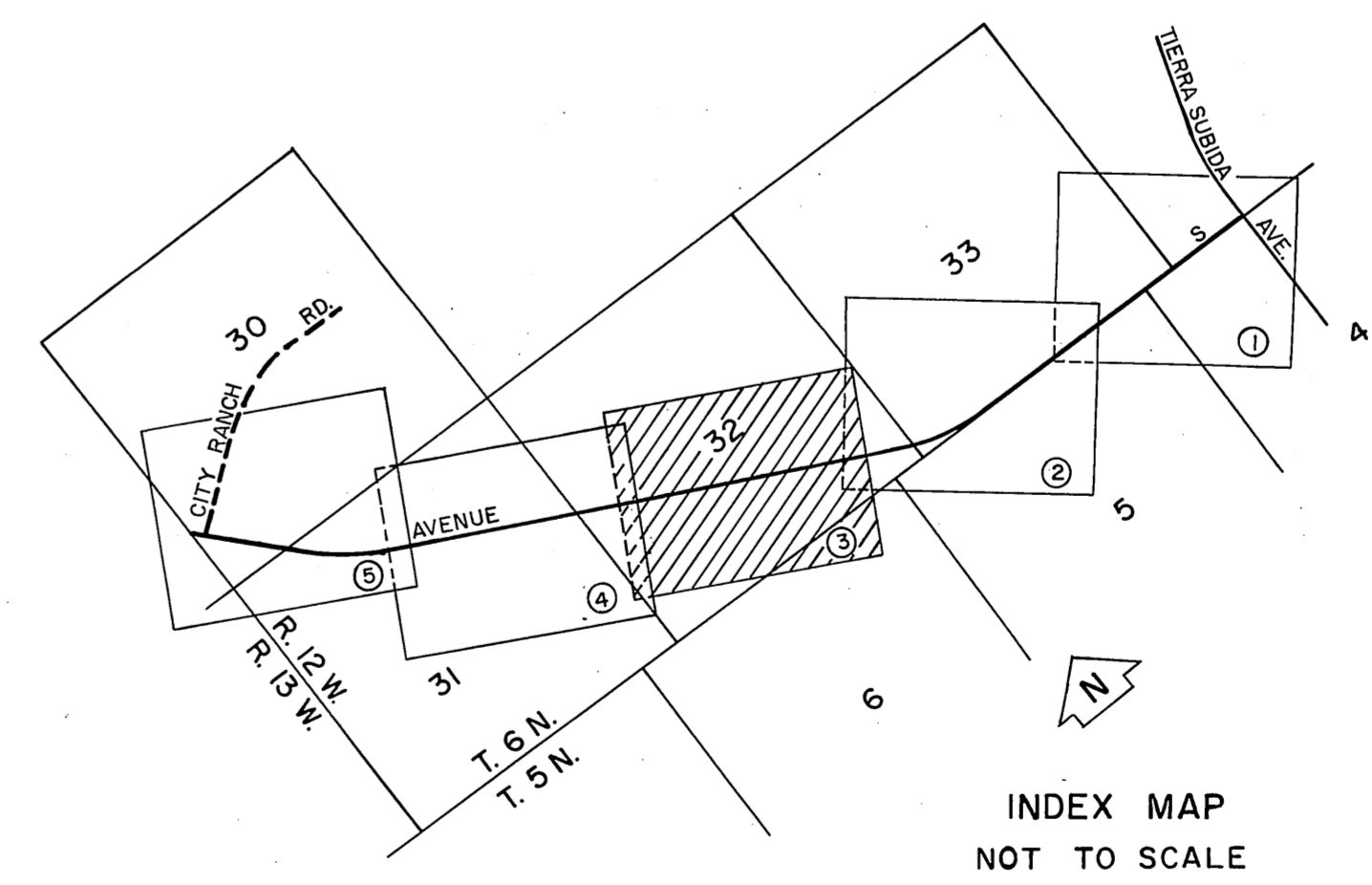


COUNTY OF LOS ANGELES DEPARTMENT OF COUNTY ENGINEER HARVEY T. BRANDT—COUNTY ENGINEER PREPARED BY SURVEY DIVISION GEORGE J. FRANCISCHINI—DIVISION ENGINEER SURVEYED BY R. BITTLE, W. VOGSE CHECKED BY D. SAPPELL DRAWN BY C. MOTEN, S. SUNABE	ALIGNMENT MAP OF AVENUE S FROM TIERRA SUBIDA AVENUE TO CITY RANCH ROAD		COUNTY SURVEYOR'S MAP NO. B-5247	REVISION NO. BY DATE
	BASIS OF BEARINGS THE WLY LINE OF SECTION 30 T.6N., R.12W. (N. 0° 15' 50" W.) AS SHOWN ON C.S.B 5246-5		SHEET 2 OF 5 SHEETS FILED: <i>Jan 28 1976</i> <i>R.P. Mitchell</i> DEPUTY SURVEYED AUGUST 1973 & MARCH 1975	
			REFERENCE F.B. 3118, F.B. 2257	
			JOB NUMBER 0095.55	INDEX MAP NO. 64 B 309-237

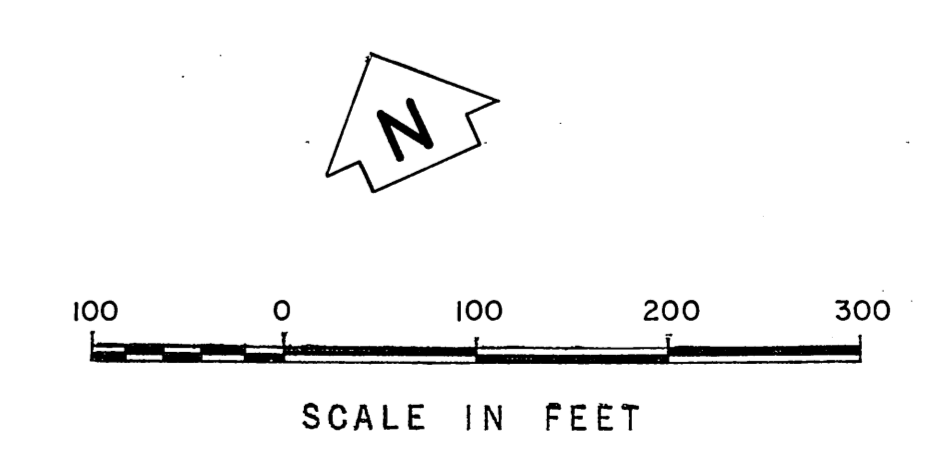
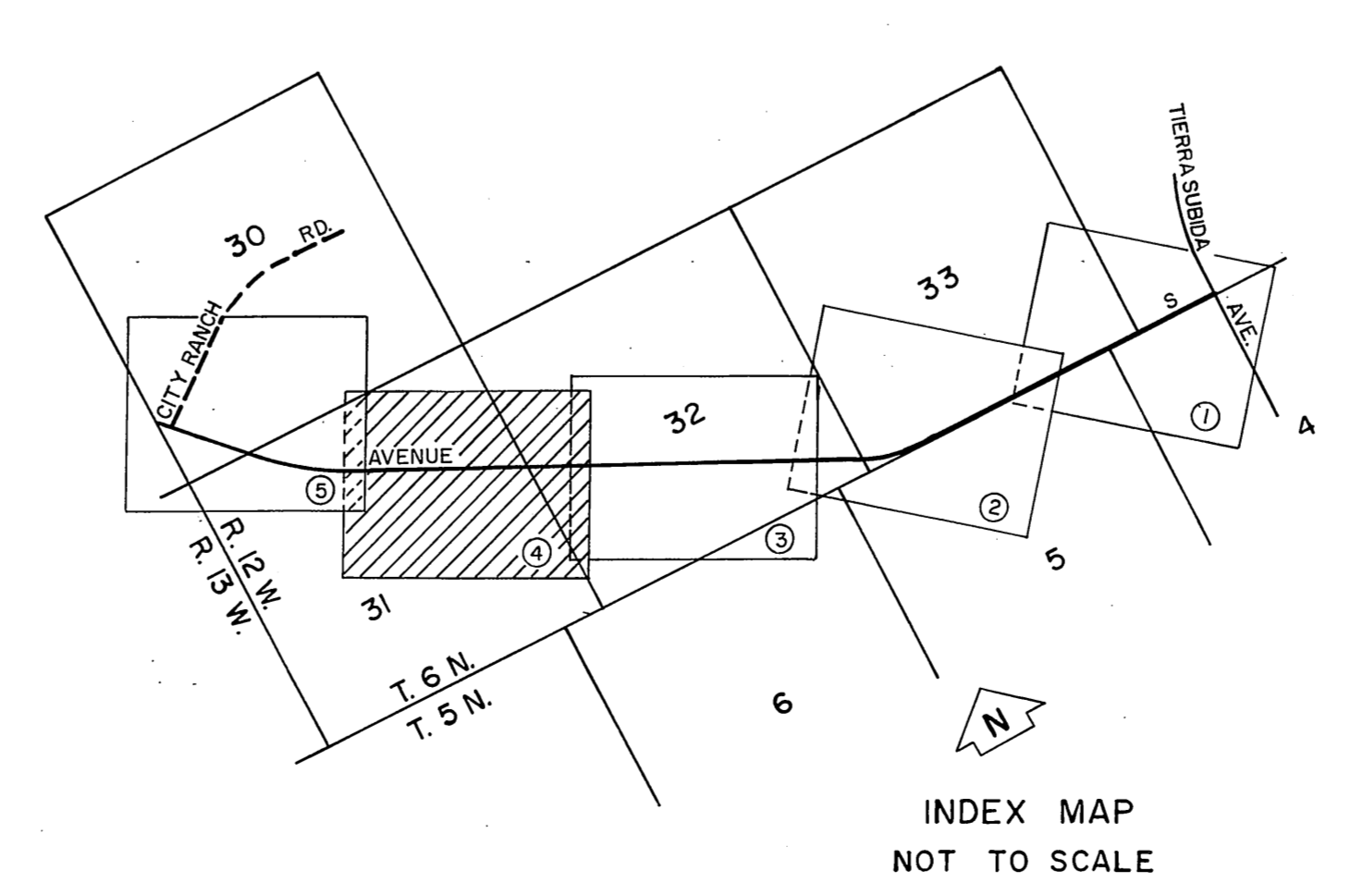
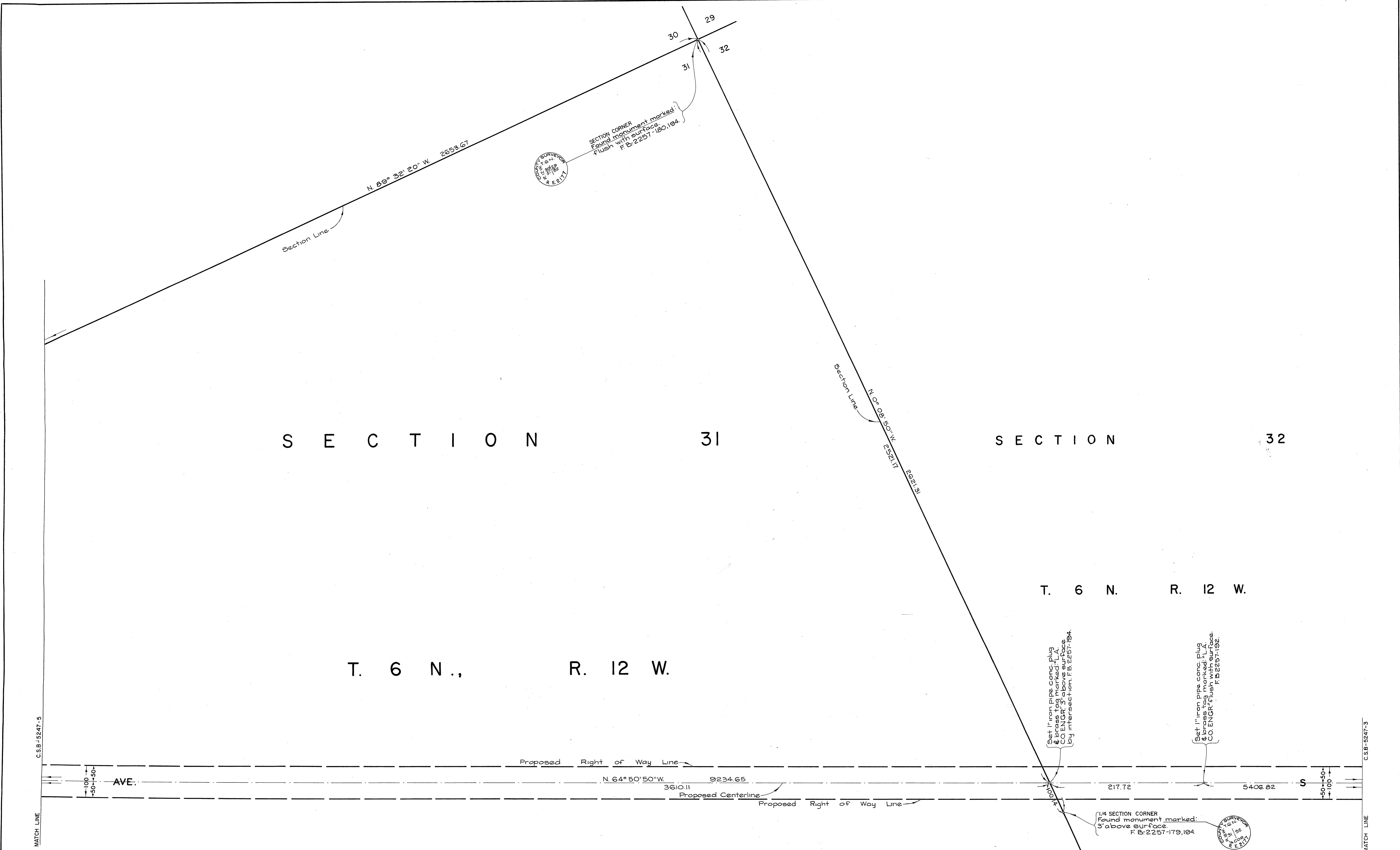
SECTION 32



T. 6 N., R. 12 W.



COUNTY OF LOS ANGELES DEPARTMENT OF COUNTY ENGINEER HARVEY T. BRANDY—COUNTY ENGINEER PREPARED BY SURVEY DIVISION GEORGE J. FRANCESCHINI—DIVISION ENGINEER SURVEYED BY R. BITTLE, W. VOGEL CHECKED BY O. SAPPELL DRAWN BY C. MOTEN, S. SUNARE	ALIGNMENT MAP OF		COUNTY SURVEYOR'S MAP NO.		REVISION	
	AVENUE S FROM TIERRA SUBIDA AVENUE TO CITY RANCH ROAD		B-5247		NO. BY DATE	
	SHEET 3 OF 5 SHEETS FILED: <i>Jan 29 1976</i> <i>R. J. Mitchell</i> DEPUTY SURVEYOR		AUGUST 1973 & MARCH 1975			
	BASIS OF BEARINGS THE WLY LINE OF SECTION 30 T.6N., R.12W. (N. 0° 15' 50" W.) AS SHOWN ON C.S.B 5246-5		REFERENCE F.B. 3118, F.B. 2257			
	JOB NUMBER 0095.55		INDEX MAP NO. 64 & 309-237			



COUNTY OF LOS ANGELES DEPARTMENT OF COUNTY ENGINEER HARVEY T. BRANDT—COUNTY ENGINEER PREPARED BY SURVEY DIVISION GEORGE J. FRANCISCHINI—DIVISION ENGINEER SURVEYED BY R. BITTLE, W. VOGEL CHECKED BY D. SAPPPELL DRAWN BY C. MOTEN, S. SUNABE	ALIGNMENT MAP OF AVENUE S FROM TIERRA SUBIDA AVENUE TO CITY RANCH ROAD BASIS OF BEARINGS THE W'LY LINE OF SECTION 30 T. 6 N., R. 12 W. (N. 0° 15' 50" W.) AS SHOWN ON C.S.B. 5246-5	COUNTY SURVEYOR'S MAP NO. B-5247	REVISION NO. BY DATE
		SHEET 4 OF 5 SHEETS FILED: <i>June 28, 1976</i> SURVEYED AUGUST 1973 & MARCH 1975 REFERENCE F.B. 3118, F.B. 2257 JOB NUMBER 0095.55 INDEX MAP NO. 64 B 309-237	

