

Found 1"x2" stake. See Road Dept. F.B. 311-97 & F.A. 351-4. F.B. 2710-16 & Tract No. 3439, M.B. 53-2, F.B. 3818-30.

Established by inter-section. Nothing set.

Found large lead spike, washer & tin. See F.B. 3218-30. F.B. 769-198.

Set square head spike & tin. See F.B. 769-198.

Established by inter-section. Nothing set.

Found nail. See F.B. 2710-30 & Road Dept. F.B. 433-18,3. F.B. 3500-32.

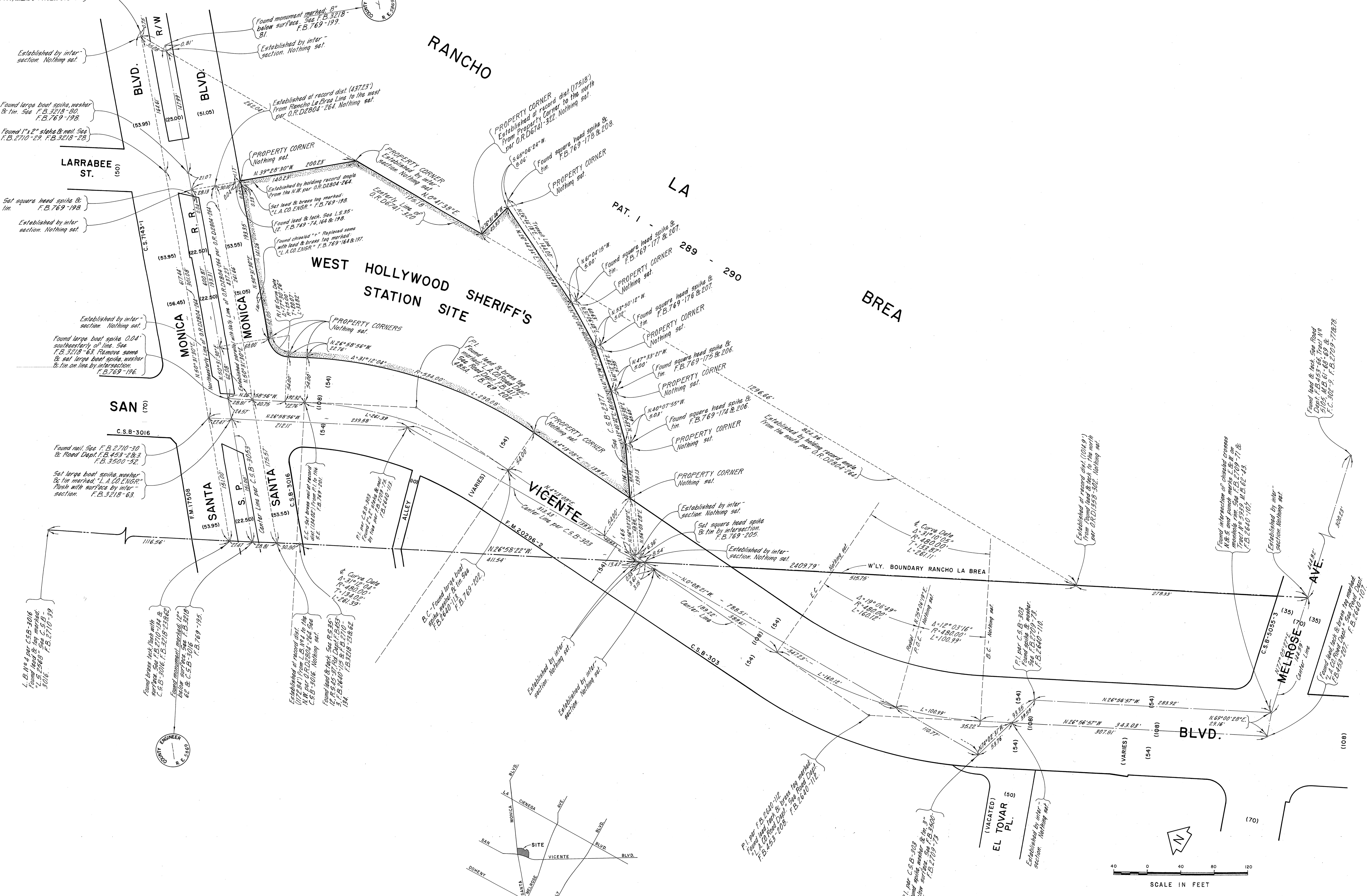
L.B. No. 4 per C.S.B-3016. Found large lead spike, washer & tin. See F.B. 3218-30.

ENGINEER R. E. BRIONES

ENGINEER R. E. BRIONES

RANCHO LA BREA

WEST HOLLYWOOD SHERIFF'S STATION SITE



VICINITY MAP NOT TO SCALE

SCALE IN FEET

COUNTY OF LOS ANGELES DEPARTMENT OF COUNTY ENGINEER HARVEY T. BRANDT—COUNTY ENGINEER PREPARED BY SURVEY DIVISION GEORGE J. FRANCISCHINI—DIVISION ENGINEER SURVEYED BY <u>J. MENNE</u> CHECKED BY <u>R. MANOR</u> DRAWN BY <u>S. BRIONES</u>	BOUNDARY MAP OF WEST HOLLYWOOD SHERIFF'S STATION SITE FOR TOPOGRAPHY SEE SURVEY DIVISION FILE MAP NO. P.T. 354A		COUNTY SURVEYOR'S MAP NO. B-5248 SHEET 1 OF 1 SHEET FILED <u>June 23, 1974</u> <u>R. J. Mitchell</u> DEPUTY SURVEYOR FEBRUARY 1974 REFERENCE F. B. 769-193-208	REVISION NO. BY DATE
	THE CENTER LINE OF SANTA MONICA BLVD. (N. 50° 31' 30" E.) AS SHOWN ON C.S.B-3053.		JOB NUMBER 0 0 8 4 . 1 3	INDEX MAP NO. 2 2
			JOB NUMBER 0 0 8 4 . 1 3	INDEX MAP NO. 2 2