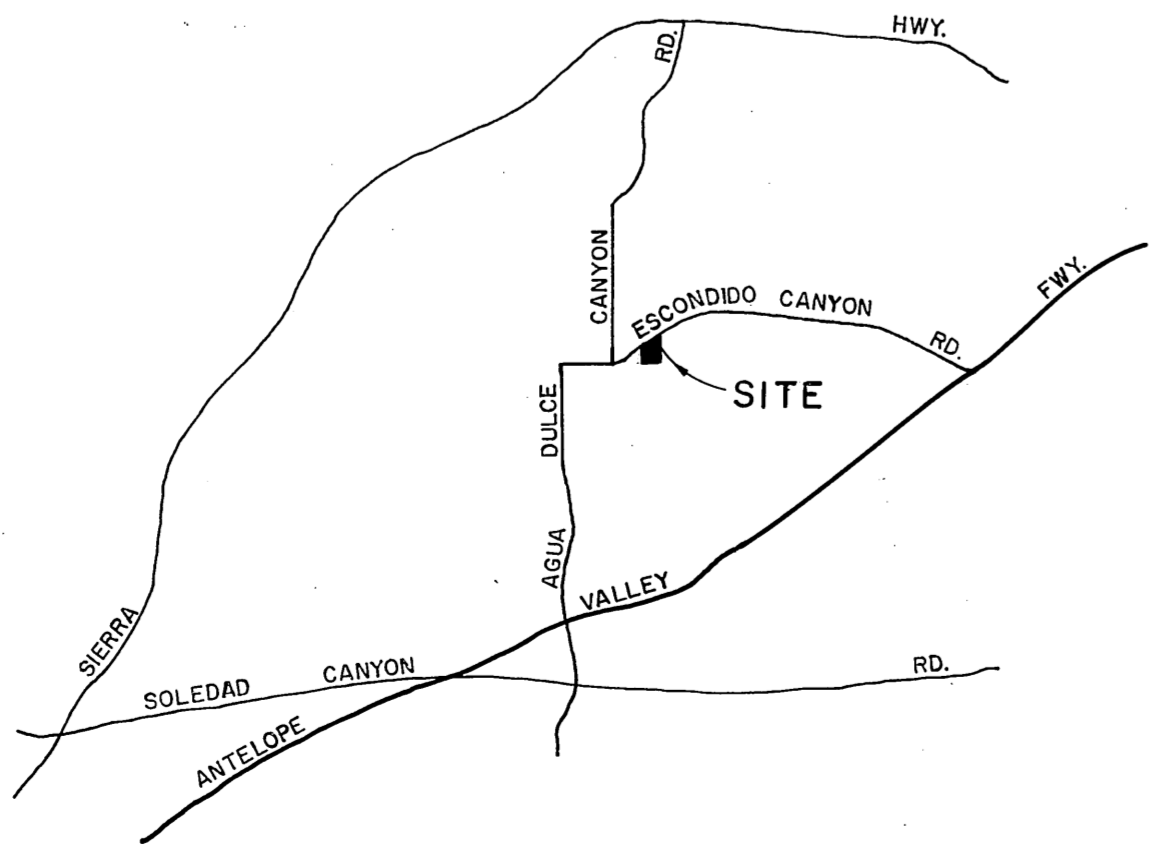
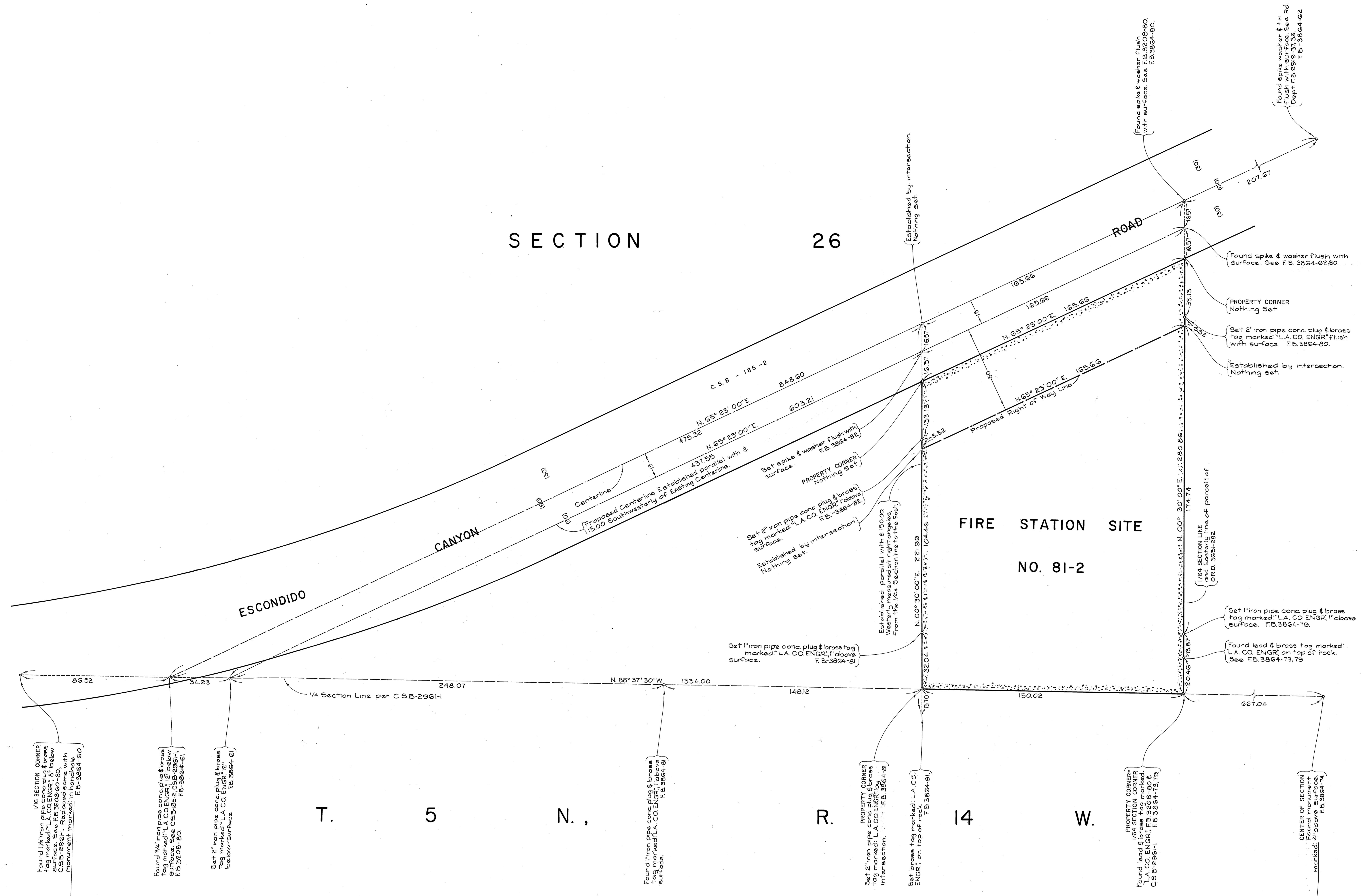
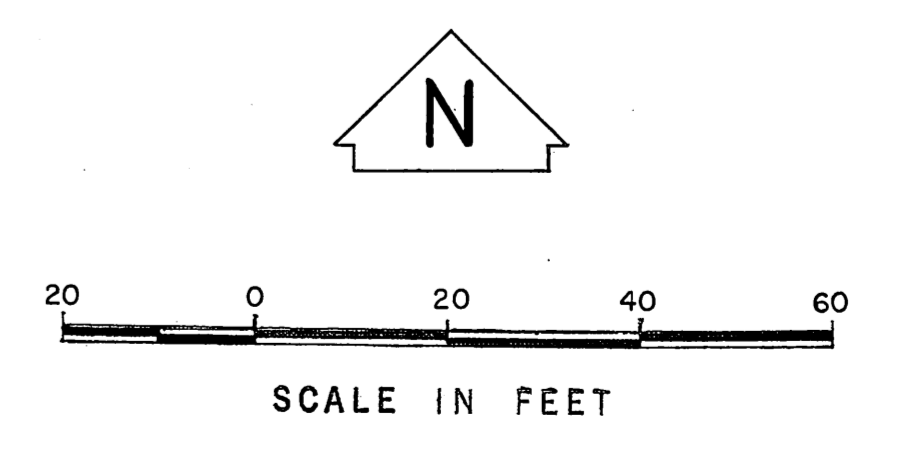


SECTION 26



NOTE:
THIS MAP IS SUPERSEDED BY C.S.B-5532,
SHOWING THE VALID ALIGNMENT OF ESCONDIDO
CANYON ROAD PER C.S.B-185-2, SEE I.E.C.
MINUTES DATED JANUARY 29, 1987.



1/8 SECTION CORNER
Found 1/8" iron pipe cone plug & brass
tag marked "L.A. CO. ENGR." 5' below
surface. See C.S.B-2961-1, 2961-2,
2961-3, 2961-4, 2961-5, 2961-6, 2961-7,
2961-8, 2961-9, 2961-10, 2961-11,
2961-12, 2961-13, 2961-14, 2961-15,
2961-16, 2961-17, 2961-18, 2961-19,
2961-20, 2961-21, 2961-22, 2961-23,
2961-24, 2961-25, 2961-26, 2961-27,
2961-28, 2961-29, 2961-30, 2961-31,
2961-32, 2961-33, 2961-34, 2961-35,
2961-36, 2961-37, 2961-38, 2961-39,
2961-40, 2961-41, 2961-42, 2961-43,
2961-44, 2961-45, 2961-46, 2961-47,
2961-48, 2961-49, 2961-50, 2961-51,
2961-52, 2961-53, 2961-54, 2961-55,
2961-56, 2961-57, 2961-58, 2961-59,
2961-60, 2961-61, 2961-62, 2961-63,
2961-64, 2961-65, 2961-66, 2961-67,
2961-68, 2961-69, 2961-70, 2961-71,
2961-72, 2961-73, 2961-74, 2961-75,
2961-76, 2961-77, 2961-78, 2961-79,
2961-80, 2961-81, 2961-82, 2961-83,
2961-84, 2961-85, 2961-86, 2961-87,
2961-88, 2961-89, 2961-90, 2961-91,
2961-92, 2961-93, 2961-94, 2961-95,
2961-96, 2961-97, 2961-98, 2961-99,
2961-100. See C.S.B-2961-1,
2961-2, 2961-3, 2961-4, 2961-5,
2961-6, 2961-7, 2961-8, 2961-9,
2961-10, 2961-11, 2961-12, 2961-13,
2961-14, 2961-15, 2961-16, 2961-17,
2961-18, 2961-19, 2961-20, 2961-21,
2961-22, 2961-23, 2961-24, 2961-25,
2961-26, 2961-27, 2961-28, 2961-29,
2961-30, 2961-31, 2961-32, 2961-33,
2961-34, 2961-35, 2961-36, 2961-37,
2961-38, 2961-39, 2961-40, 2961-41,
2961-42, 2961-43, 2961-44, 2961-45,
2961-46, 2961-47, 2961-48, 2961-49,
2961-50, 2961-51, 2961-52, 2961-53,
2961-54, 2961-55, 2961-56, 2961-57,
2961-58, 2961-59, 2961-60, 2961-61,
2961-62, 2961-63, 2961-64, 2961-65,
2961-66, 2961-67, 2961-68, 2961-69,
2961-70, 2961-71, 2961-72, 2961-73,
2961-74, 2961-75, 2961-76, 2961-77,
2961-78, 2961-79, 2961-80, 2961-81,
2961-82, 2961-83, 2961-84, 2961-85,
2961-86, 2961-87, 2961-88, 2961-89,
2961-90, 2961-91, 2961-92, 2961-93,
2961-94, 2961-95, 2961-96, 2961-97,
2961-98, 2961-99, 2961-100. See
F.B.-3864-90

Found 3/4" iron pipe cone plug & brass
tag marked "L.A. CO. ENGR." 2' below
surface. See C.S.B-2961-1, 2961-2,
2961-3, 2961-4, 2961-5, 2961-6, 2961-7,
2961-8, 2961-9, 2961-10, 2961-11,
2961-12, 2961-13, 2961-14, 2961-15,
2961-16, 2961-17, 2961-18, 2961-19,
2961-20, 2961-21, 2961-22, 2961-23,
2961-24, 2961-25, 2961-26, 2961-27,
2961-28, 2961-29, 2961-30, 2961-31,
2961-32, 2961-33, 2961-34, 2961-35,
2961-36, 2961-37, 2961-38, 2961-39,
2961-40, 2961-41, 2961-42, 2961-43,
2961-44, 2961-45, 2961-46, 2961-47,
2961-48, 2961-49, 2961-50, 2961-51,
2961-52, 2961-53, 2961-54, 2961-55,
2961-56, 2961-57, 2961-58, 2961-59,
2961-60, 2961-61, 2961-62, 2961-63,
2961-64, 2961-65, 2961-66, 2961-67,
2961-68, 2961-69, 2961-70, 2961-71,
2961-72, 2961-73, 2961-74, 2961-75,
2961-76, 2961-77, 2961-78, 2961-79,
2961-80, 2961-81, 2961-82, 2961-83,
2961-84, 2961-85, 2961-86, 2961-87,
2961-88, 2961-89, 2961-90, 2961-91,
2961-92, 2961-93, 2961-94, 2961-95,
2961-96, 2961-97, 2961-98, 2961-99,
2961-100. See
F.B.-3864-61

Set 2" iron pipe cone plug & brass
tag marked "L.A. CO. ENGR." above
surface. See F.B.-3864-61

Found 1" iron pipe cone plug & brass
tag marked "L.A. CO. ENGR." above
surface. See F.B.-3864-81

Set 2" iron pipe cone plug & brass
tag marked "L.A. CO. ENGR." above
surface. See F.B.-3864-81

Set 1" iron pipe cone plug & brass
tag marked "L.A. CO. ENGR." above
surface. See F.B.-3864-81

Found lead & brass tag marked:
"L.A. CO. ENGR." on top of rock.
See F.B. 3864-73, 79

CENTER OF SECTION
Found monument
marked: "above" F.B. 3864-74

COUNTY OF LOS ANGELES DEPARTMENT OF COUNTY ENGINEER HARVEY T. BRANDT - COUNTY ENGINEER PREPARED BY SURVEY DIVISION GEORGE J. FRANCOISCHI - DIVISION ENGINEER SURVEYED BY R. J. BILIE CHECKED BY J. F. MUNOZ DRAWN BY C. MOTEN	BOUNDARY MAP OF FIRE STATION SITE NO. 81-2 VASQUEZ ROCKS REGIONAL PARK FOR TOPOGRAPHY SEE SURVEY DIVISION FILE MAP P.T. - J - 123 BASIS OF BEARINGS THE S'LY LINE OF THE N.W. 1/4 OF SECTION 26, T. 5 N., R. 14 W. (N. 88° 37' 30" W.) AS SHOWN ON C.S.B - 2961 - 1	COUNTY SURVEYOR'S MAP NO. B-5250 SHEET 1 OF 1 SHEET FILED: <i>Jan 23</i> , 1974 <i>R. J. Bilie</i> SURVEYED DECEMBER, 1974 REFERENCE F.B. 3864 JOB NUMBER 0038, 51 INDEX MAP NO. 78	REVISION NO. BY DATE
		COUNTY ENGINEER HARVEY T. BRANDT F.B. 3864	