

NOTE:  
THE ALIGNMENT OF 150 TH ST. WEST  
ALONG HIGHWAY, AS PROPOSED  
ON THE MASTER PLAN OF HIGHWAYS  
HAD NOT BEEN ESTABLISHED AT THE  
TIME OF THE FILING OF THIS MAP.

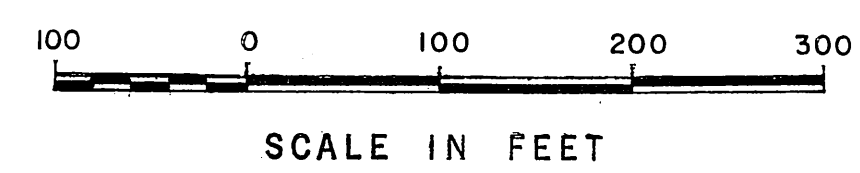
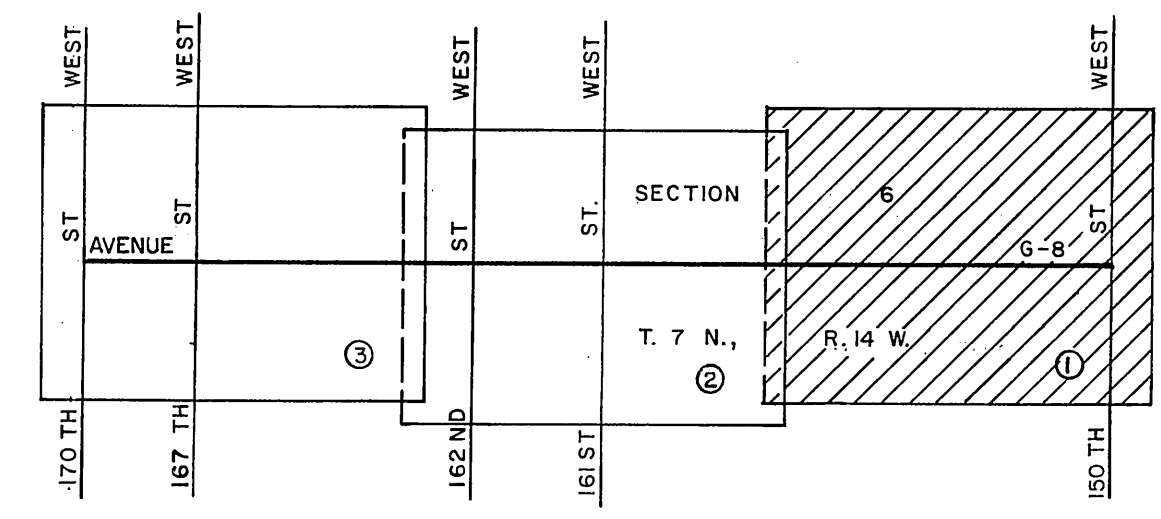
Found 1"x2" stake & nail.  
See F.B. 3222-224.  
F.B. 3844-95.

Found iron pipe conc. plug  
& brass tag marked "L.A. CO.  
ENGR. 0" above surface. See  
F.B. 3222-224, F.B. 3844-95.

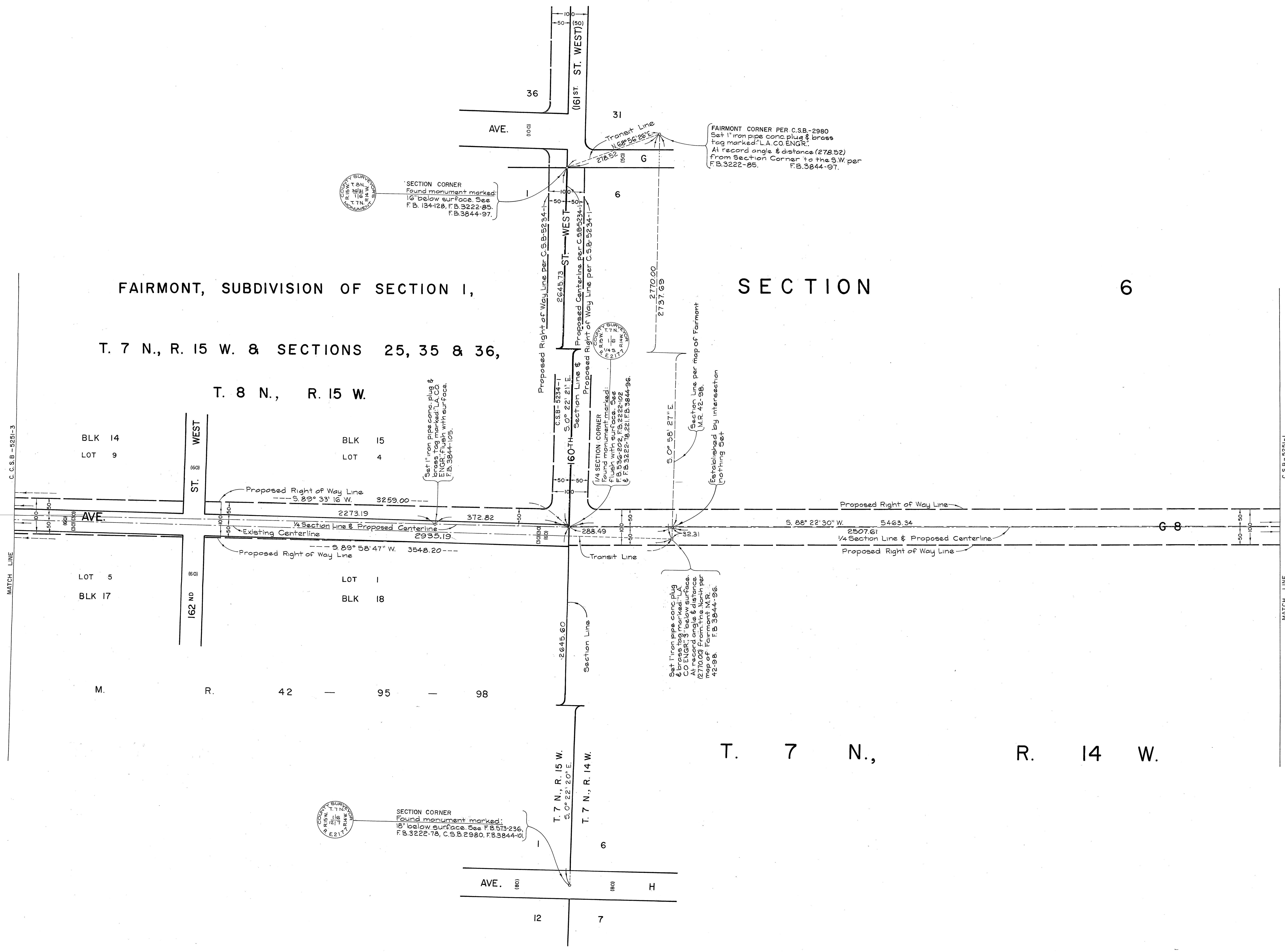
1/4 SECTION CORNER  
Found monument marked:  
Flush with surface. See  
F.B. 573-276, F.B. 3222-224,  
F.B. 3844-95.

SURVEY CONTROL STATION  
LAKE HUGHES L-4  
Found L.A. CO. Survey Control  
System Monument. F.B. 3222-224.  
N. 4, 373, 572, 78 (1970 Adj.)  
E. 4, 125, 673, 44

SURVEY CONTROL STATION  
DEL SUR B-6  
Found L.A. CO. Survey Control  
System Monument. See  
F.B. 1869-189, F.B. 3222-224,  
N. 4, 328, 647, 45  
E. 4, 179, 039, 33 (1970 Adj.)



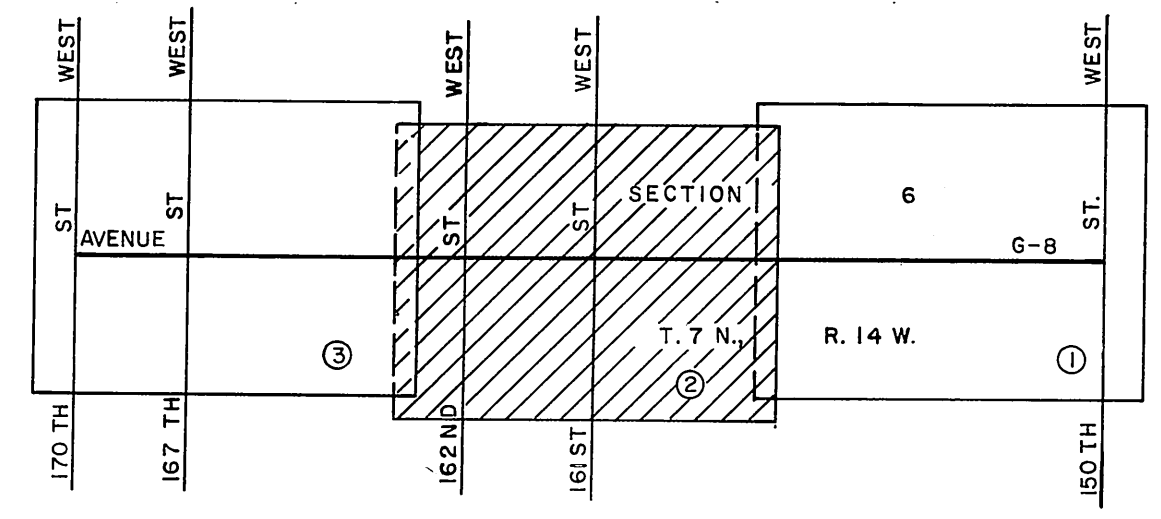
COUNTY OF LOS ANGELES DEPARTMENT OF COUNTY ENGINEER HARVEY T. BRANDT—COUNTY ENGINEER PREPARED BY SURVEY DIVISION GEORGE J. FRANCIS—DIVISION ENGINEER SURVEYED BY <u>K. KING</u> CHECKED BY <u>C. ADAMS</u> DRAWN BY <u>C. MOTEN</u>	ALIGNMENT MAP OF <b>AVENUE G - 8</b> FROM <b>150TH STREET WEST</b> TO <b>170TH STREET WEST</b> BASIS OF BEARINGS CALIFORNIA COORDINATE SYSTEM, ZONE 7		COUNTY SURVEYOR'S MAP NO. <b>B-5251</b> SHEET OF 3 SHEETS FILED: <u>March 3 1974</u> <u>R. J. Mitchell</u> DEPUTY SURVEYED JANUARY 1974 - MARCH 1974 REFERENCE F. B. 3844, F. B. 3222, F. B. 2222 JOB NUMBER 0097.41	REVISION NO. BY DATE
	COUNTY ENGINEER T. W. S. 1711 1715 2171		SECTION CORNER Found monument marked: 18" below surface. See F.B. 573-259, 275 & C.S.B.-1073-1.	SECTION CORNER Found monument marked: 16" below surface. See F.B. 573-261, 307, C.S.B.-1073-1, F.B. 2222-88, F.B. 3844-92.



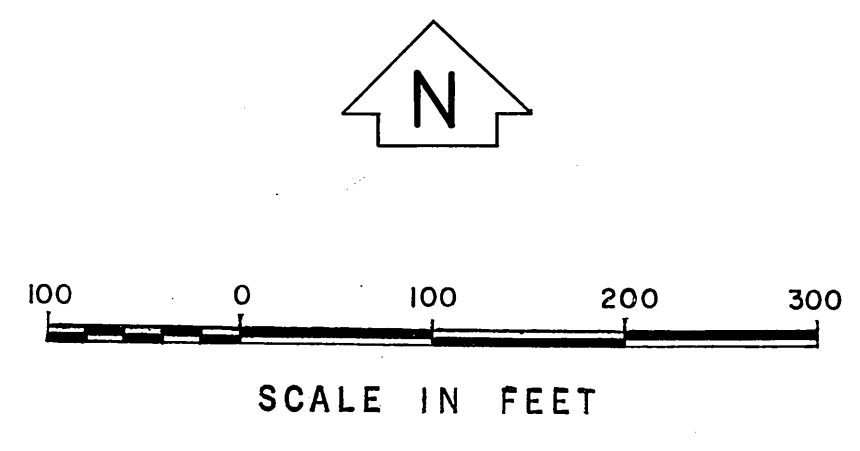
FAIRMONT, SUBDIVISION OF SECTION 1,  
 T. 7 N., R. 15 W. & SECTIONS 25, 35 & 36,  
 T. 8 N., R. 15 W.

SECTION 6

T. 7 N., R. 14 W.



INDEX MAP  
NOT TO SCALE



FAIRMONT CORNER PER C.S.B.-2980  
 Set 1" iron pipe conc plug & brass  
 tag marked "LA CO ENGR."  
 At record angle & distance (278.52)  
 from Section Corner to the S.W. per  
 F.B. 3222-85. F.B. 3844-97.

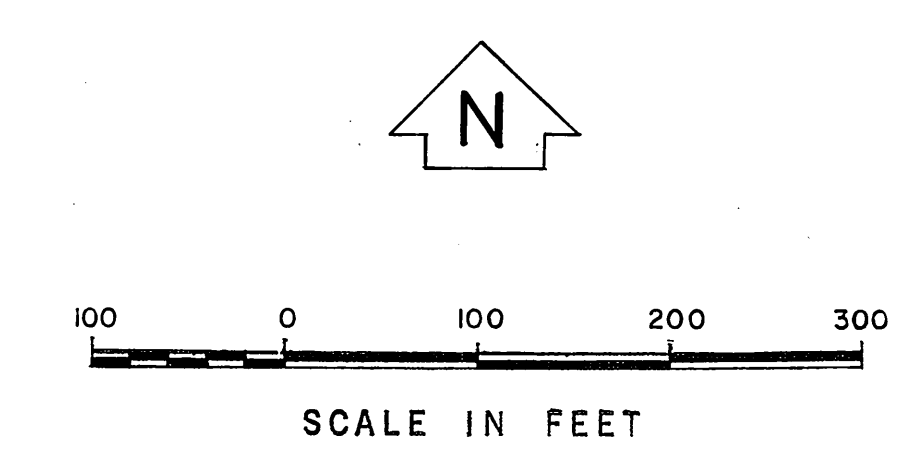
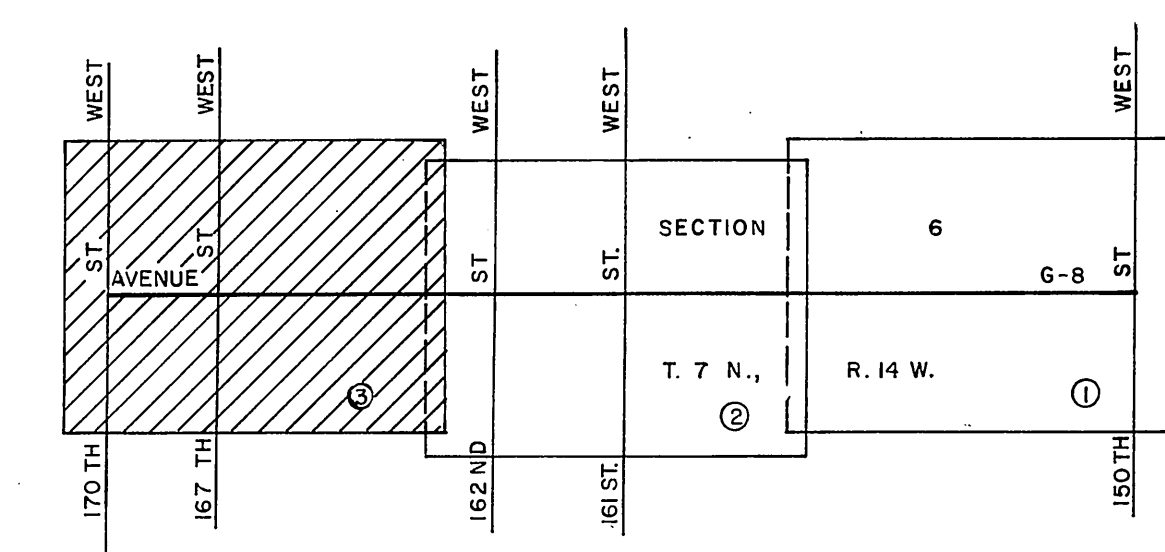
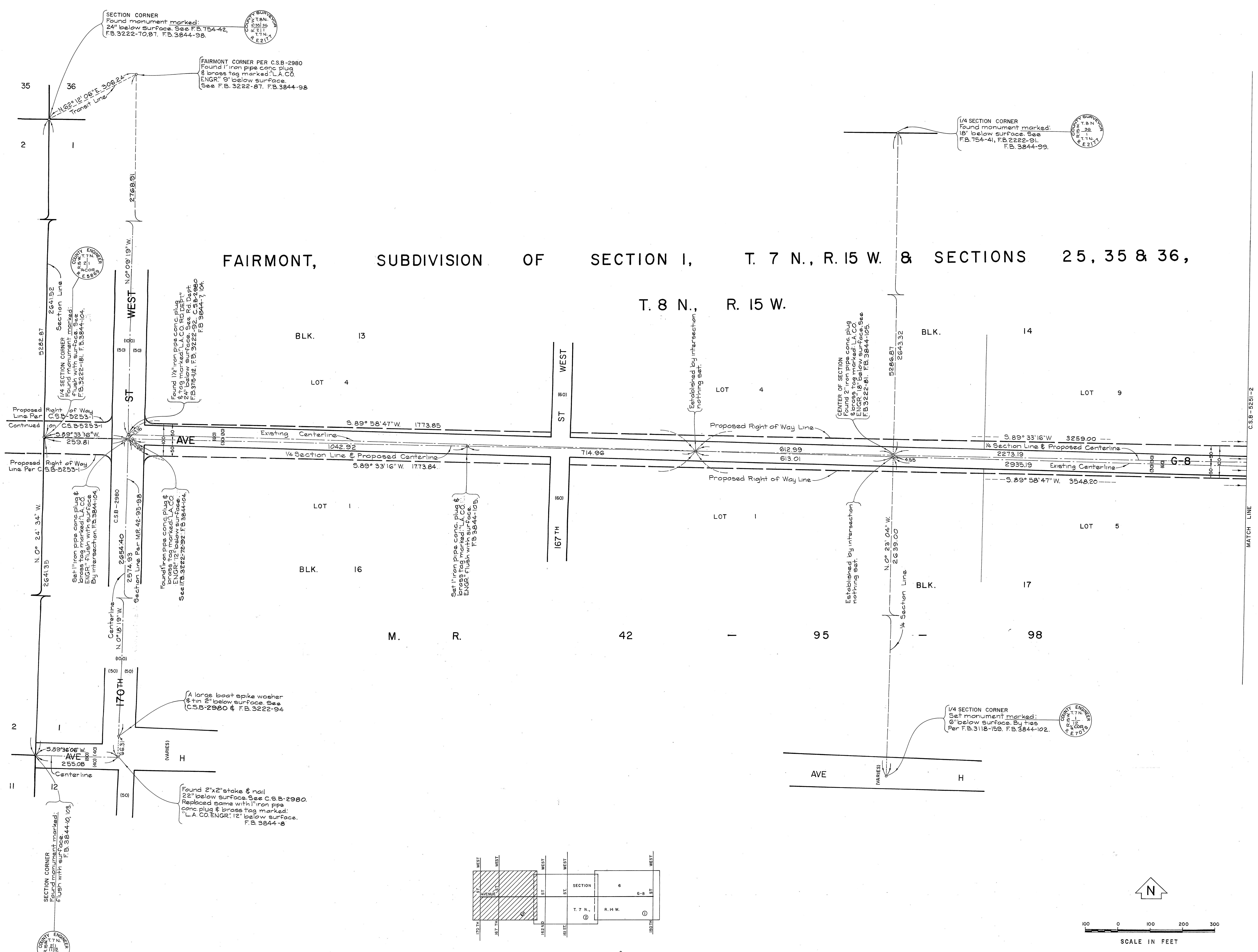
SECTION CORNER  
 Found monument marked:  
 16" below surface. See  
 F.B. 134-128, F.B. 3222-85,  
 F.B. 3844-97.

SECTION CORNER  
 Found monument marked:  
 1/4" flush with surface. See  
 F.B. 3222-85, F.B. 3222-82  
 & F.B. 3844-97.

Set 1" iron pipe conc plug  
 & brass tag marked "LA  
 CO ENGR." 3" below surface.  
 At record angle & distance  
 from Section Corner to the  
 map of Fairmont M.R.  
 42-98. F.B. 3844-96.

SECTION CORNER  
 Found monument marked:  
 18" below surface. See F.B. 573-236,  
 F.B. 3222-78, C.S.B. 2980, F.B. 3844-101.

COUNTY OF LOS ANGELES DEPARTMENT OF COUNTY ENGINEER HARVEY T. BRANDT—COUNTY ENGINEER PREPARED BY SURVEY DIVISION GEORGE J. FRANCISCHINI—DIVISION ENGINEER SURVEYED BY <u>K. KING</u> CHECKED BY <u>C. ADAMS</u> DRAWN BY <u>C. MOTEN</u>	ALIGNMENT MAP OF <b>AVENUE G - 8</b> FROM <b>150TH STREET WEST</b> TO <b>170TH STREET WEST</b> BASIS OF BEARINGS CALIFORNIA COORDINATE SYSTEM, ZONE 7		COUNTY SURVEYOR'S MAP NO. <b>B-5251</b> SHEET 2 OF 3 SHEETS FILED: <u>March 3</u> 1974 <u>By: [Signature]</u> DEPUTY SURVEYED JANUARY 1974 - MARCH 1974 REFERENCE F.B. 3844, F.B. 3222, E.B. 2222 JOB NUMBER 0037-41	REVISION NO. BY DATE



COUNTY OF LOS ANGELES DEPARTMENT OF COUNTY ENGINEER HARVEY T. BRANDT—COUNTY ENGINEER PREPARED BY SURVEY DIVISION GEORGE J. FRANCESCHINI—DIVISION ENGINEER SURVEYED BY K. KING CHECKED BY C. ADAMS DRAWN BY C. MOTEN	ALIGNMENT MAP OF <b>AVENUE G - 8</b> FROM <b>150TH STREET WEST</b> TO <b>170TH STREET WEST</b>		COUNTY SURVEYOR'S MAP NO. <b>B-5251</b> SHEET 3 OF 3 SHEETS FILED <i>March 3 1976</i> <i>R.J. Mitchell</i> DEPUTY SURVEYED JANUARY 1974 - MARCH 1974 REFERENCE F.B. 3844, F.B. 3222, F.B. 2222 JOB NUMBER 0097.41 INDEX MAP NO. 72	REVISION NO. BY DATE
	BASIS OF BEARINGS CALIFORNIA COORDINATE SYSTEM, ZONE 7			