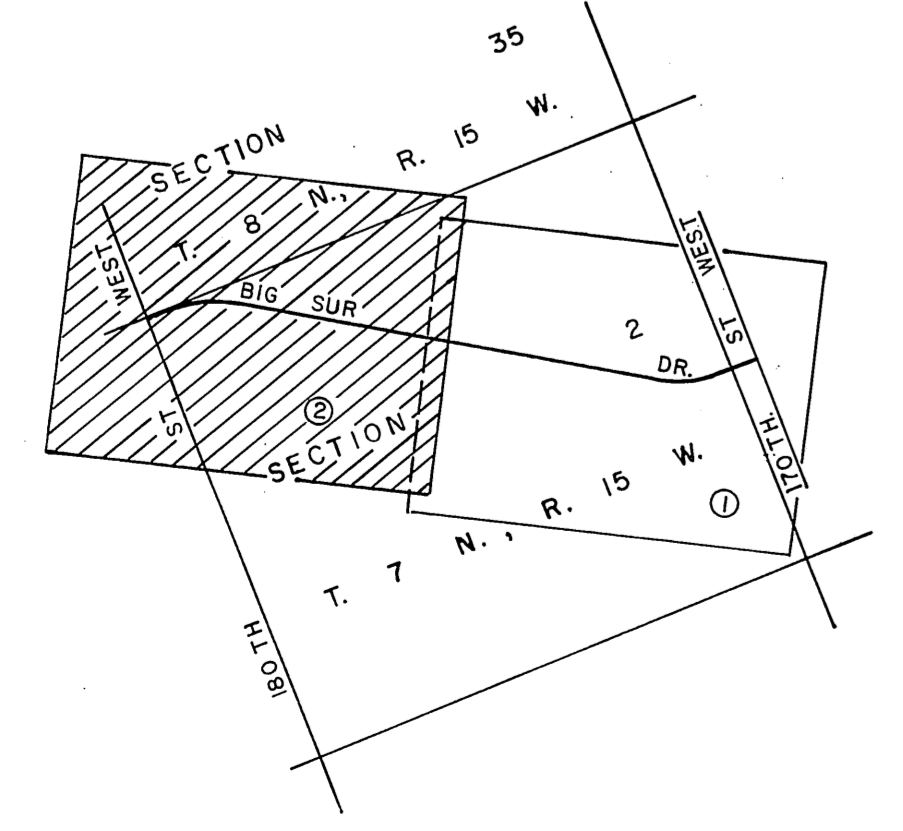
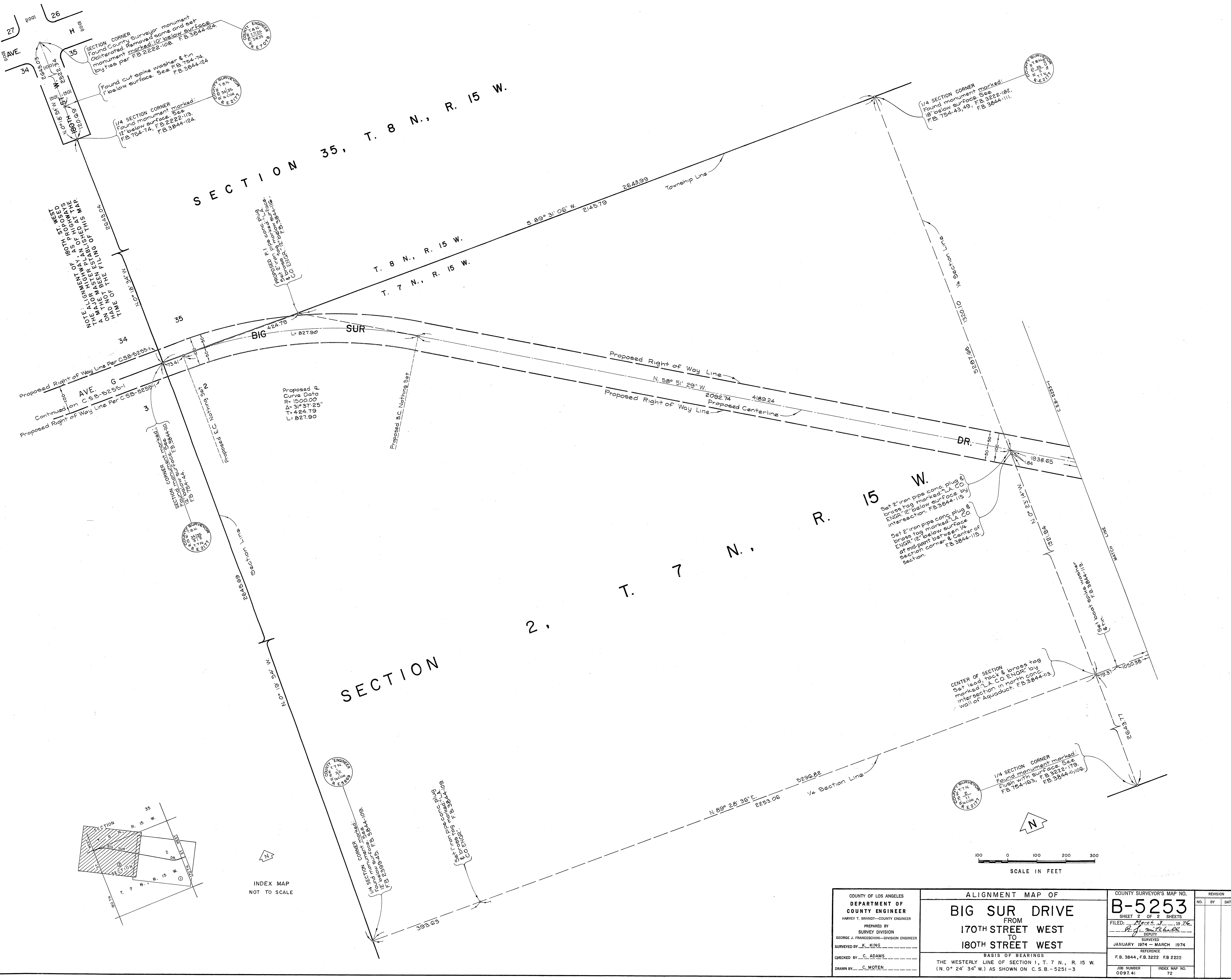


INDEX MAP NOT TO SCALE

COUNTY OF LOS ANGELES DEPARTMENT OF COUNTY ENGINEER HARVEY T. BRANDT—COUNTY ENGINEER PREPARED BY SURVEY DIVISION GEORGE J. FRANGESCHINI—DIVISION ENGINEER SURVEYED BY K. KING CHECKED BY C. ADAMS DRAWN BY C. MOTEN	ALIGNMENT MAP OF <b>BIG SUR DRIVE</b> FROM <b>170TH STREET WEST</b> TO <b>180TH STREET WEST</b>		COUNTY SURVEYOR'S MAP NO. <b>B-5253</b> SHEET 1 OF 2 SHEETS FILED: <i>Handwritten</i> 1974 DEPUTY SURVEYED JANUARY 1974 - MARCH 1974 REFERENCE F.B. 3844, F.B. 3222, F.B. 2222	REVISION NO. BY DATE	
	BASIS OF BEARINGS THE WESTERLY LINE OF SECTION 1, T. 7 N., R. 15 W. (N. 0° 24' 34" W.) AS SHOWN ON C.S.B. - 5251-3		REFERENCE F.B. 3844, F.B. 3222, F.B. 2222	NO. BY DATE	
			JOB NUMBER 0097.41	INDEX MAP NO. 72	NO. BY DATE
					NO. BY DATE



INDEX MAP NOT TO SCALE

SCALE IN FEET

COUNTY OF LOS ANGELES DEPARTMENT OF COUNTY ENGINEER HARVEY T. BRANDT—COUNTY ENGINEER PREPARED BY SURVEY DIVISION GEORGE J. FRANCISCHINI—DIVISION ENGINEER SURVEYED BY K. KING CHECKED BY C. ADAMS DRAWN BY C. MOTEN	ALIGNMENT MAP OF <b>BIG SUR DRIVE</b> FROM 170TH STREET WEST TO 180TH STREET WEST		COUNTY SURVEYOR'S MAP NO. <b>B-5253</b>	REVISION NO. BY DATE
	SHEET 2 OF 2 SHEETS FILED: <i>March 7</i> 19 74 <i>P. J. Mitchell</i> DEPUTY		JANUARY 1974—MARCH 1974	
	BASIS OF BEARINGS THE WESTERLY LINE OF SECTION 1, T. 7 N., R. 15 W. (N. 0° 24' 34" W.) AS SHOWN ON C.S.B.—5251—3		REFERENCE F.B. 3844, F.B. 3222, F.B. 2222	
	JOB NUMBER 0097.41		INDEX MAP NO. 72	
	SURVEYED JANUARY 1974—MARCH 1974			