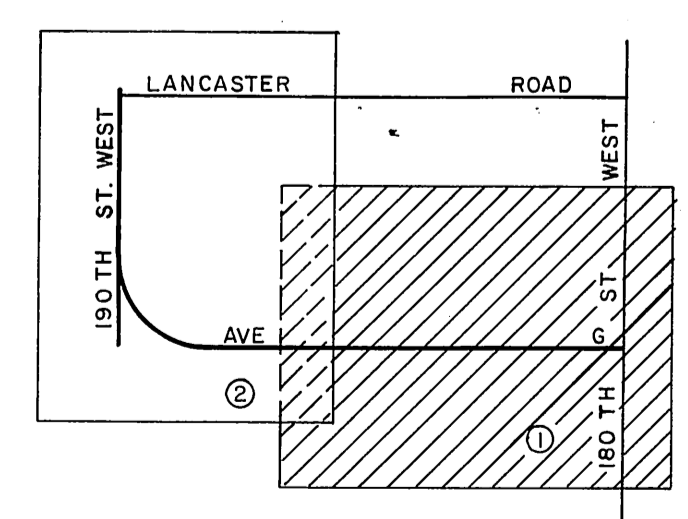


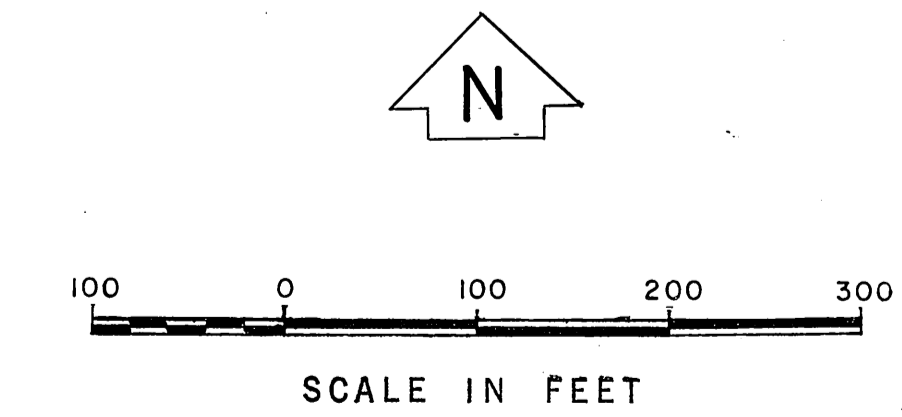
C. S. B - 5253 - 2
MATCH LINE

SECTION 34, T. 8 N., R. 15 W.

SECTION 3, T. 7 N., R. 15 W.



INDEX MAP
NOT TO SCALE

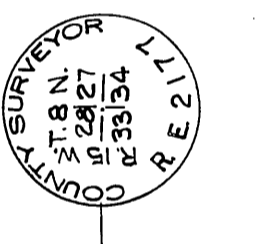


COUNTY OF LOS ANGELES DEPARTMENT OF COUNTY ENGINEER HARVEY T. BRANDT—COUNTY ENGINEER PREPARED BY SURVEY DIVISION GEORGE J. FRANCIS—DIVISION ENGINEER SURVEYED BY <u>K. KING</u> CHECKED BY <u>C. ADAMS</u> DRAWN BY <u>C. MOTEN</u>	ALIGNMENT MAP OF AVE. G - 190TH ST. WEST FROM 180TH STREET WEST TO LANCASTER ROAD		COUNTY SURVEYOR'S MAP NO. B-5255	REVISION NO. BY DATE
	SHEET 1 OF 2 SHEETS FILED: <u>March 3 1974</u> <u>R. J. Mitchell</u> DEPUTY		JANUARY 1974 - MARCH 1974	
	BASIS OF BEARINGS THE EASTERLY LINE OF SECTION 3 T. 7 N., R. 15 W. (N. 0° 19' 54" W.) AS SHOWN ON C.S.B - 5253-2		REFERENCE F.B. 3844 F.B. 3222 F.B. 2222 JOB NUMBER 0097.41 INDEX MAP NO. 72	

SECTION 34

T. 8 N., R. 15 W.

SECTION 33, T. 8 N., R. 15 W.



SECTION CORNER
Found monument marked:
12" below surface. See
F.B. 754-76, F.B. 2914-237,
F.B. 3844-122.

Found 2" iron pipe conc. plug
& brass tag marked: L.A.
CO ENGR. 12" below surface.
See F.B. 2914-230, F.B. 3844-122.

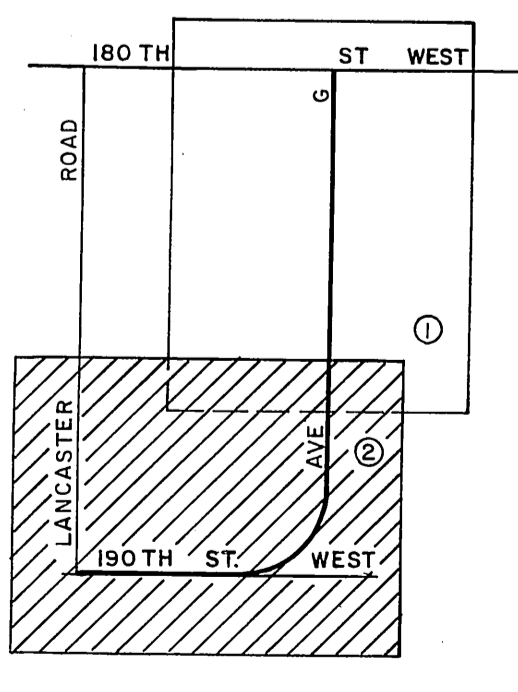
1/4 SECTION CORNER
Found 1" iron pipe conc. plug
& brass tag marked: L.A.
CO ENGR. 12" below surface.
See F.B. 754-75, F.B. 2914-223,
F.B. 3844-121.

POST.
Found 2" iron pipe conc. plug
& brass tag marked: L.A.
CO ENGR. 12" below surface.
See F.B. 3118-156, F.B. 3844-120.

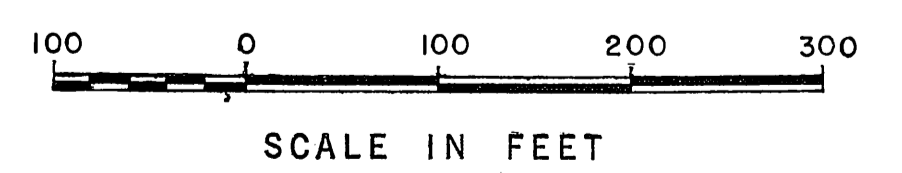
POST.
Found State Dept of Water
Resources monument flush
with surface. See F.B. 3118-158,
F.B. 3854-199, F.B. 3844-119.

SECTION CORNER &
PROPOSED P.I.
Established by calculation.
This point is inaccessible.
F.B. 3844-119

ANGLE POINT
Found large bolt spike
washer & tin 4" below
surface. See F.B. 2914-230,
F.B. 3844-123.



INDEX MAP
NOT TO SCALE



COUNTY OF LOS ANGELES DEPARTMENT OF COUNTY ENGINEER HARVEY T. BRANDT—COUNTY ENGINEER PREPARED BY SURVEY DIVISION GEORGE J. FRANCIS—DIVISION ENGINEER SURVEYED BY <u>K. KING</u> CHECKED BY <u>C. ADAMS</u> DRAWN BY <u>C. MOTEN</u>	ALIGNMENT MAP OF AVE. G-190TH ST. WEST FROM 180TH STREET WEST TO LANCASTER ROAD		COUNTY SURVEYOR'S MAP NO. B-5255 SHEET 2 OF 2 SHEETS FILED: <u>March 3 1974</u> <u>R. J. Mitchell</u> DEPUTY SURVEYED JANUARY 1974 - MARCH 1974	REVISION NO. BY DATE
	THE EASTERLY BASIS OF BEARINGS LINE OF SECTION 3 T. 7 N., R. 15 W. (N. 0° 19' 54" W.) AS SHOWN ON C.S.B-5253-2		REFERENCE F.B. 3844 F.B. 3222 F.B. 2222 JOB NUMBER 0097.41 INDEX MAP NO. 72	