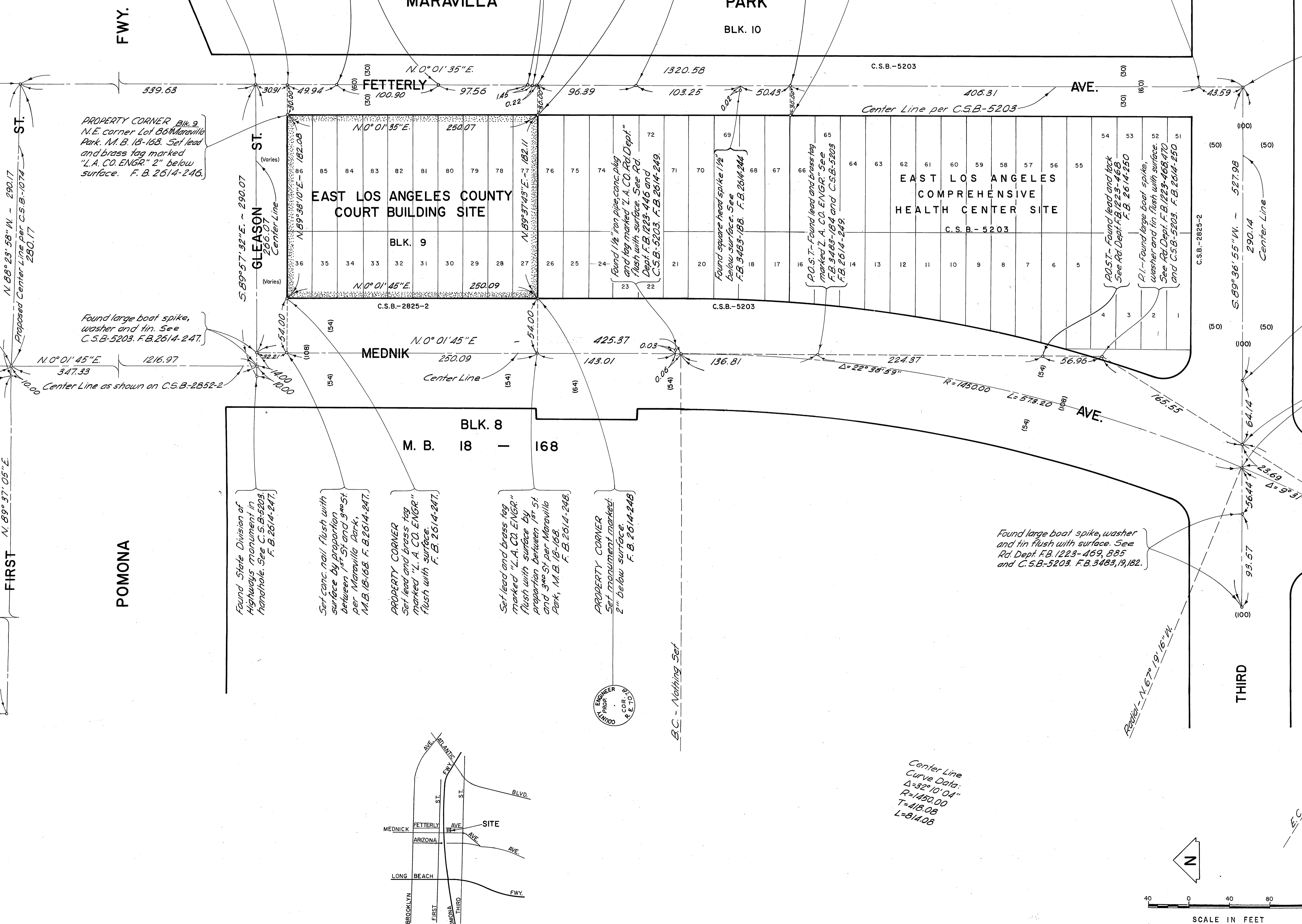


Found State Division of Highways monument 12" below surface. See C.S.B.-5203. F.B.3483-59.

Set lead and brass tag marked "L.A. CO. ENGR" by intersection. See C.S.B.-5203. F.B.3483-58.

Found lead and tack 1/8" below surface. See C.S.B.-5203. F.B.3483-93.
Found intersection of 4 larger monuments on larger monuments. See C.S.B.-5203. F.B.3483-53.

Found State Division of Highways monument in handhole. See C.S.B.-5203. F.B.3483-55.



PROPERTY CORNER Blk. 9 N.E. corner Lot 66 Maravilla Park, M.B. 18-168. Set lead and brass tag marked "L.A. CO. ENGR." 2" below surface. F.B. 2614-246.

Found State Division of Highways monument in handhole. See C.S.B.-5203. F.B. 2614-247.

Set conc. nail flush with surface by proportion between 1st St and 3rd St per Maravilla Park, M.B. 18-168. F.B. 2614-247.

PROPERTY CORNER Set lead and brass tag marked "L.A. CO. ENGR." flush with surface. F.B. 2614-247.

Set lead and brass tag marked "L.A. CO. ENGR." flush with surface by proportion between 1st St and 3rd St per Maravilla Park, M.B. 18-168. F.B. 2614-248.

PROPERTY CORNER Set monument marked 2" below surface. F.B. 2614-248.

ENGINEER JOHN CORCORAN

B.C. - Nothing Set

Center Line Curve Data:
Δ=32°10'04"
R=1450.00
T=115.08
L=214.08

SCALE IN FEET

VICINITY MAP NOT TO SCALE

COUNTY OF LOS ANGELES DEPARTMENT OF COUNTY ENGINEER HARVEY T. BRANDT - COUNTY ENGINEER PREPARED BY SURVEY DIVISION GEORGE J. FRANCISCHINI - DIVISION ENGINEER SURVEYED BY L.L. BROWN CHECKED BY M.R. NEVAREZ DRAWN BY B. GOINS	BOUNDARY MAP OF EAST LOS ANGELES COUNTY COURT BUILDING SITE		COUNTY SURVEYOR'S MAP NO. B-5257	REVISION NO. BY DATE	
	PREPARED BY SURVEYED BY L.L. BROWN FILED: 1975		SHEET 1 OF 1 SHEET FILED: 1975	NO. BY DATE	
	FOR TOPOGRAPHY SEE SURVEY DIVISION FILE MAP NO. P.T. J-67-2		SURVEYED MARCH 1975	DEPUTY SURVEYOR MARCH 1975	NO. BY DATE
	BASIS OF BEARINGS THE CENTER LINE OF FETTERLY AVE. (N.0°01'35"E.) AS SHOWN ON C.S.B.-5203		REFERENCE F.B. 2614 F.B. 3483	JOB NUMBER 0018.72	INDEX MAP NO. 36