

1/4 SECTION CORNER
 Found monument marked "4" above
 surface. See F. B. 429-15, 16,
 C.S.B-1154. F. B. 3255-161

NOTE:
 THE ALIGNMENT OF 87TH STREET W.
 A SECONDARY HIGHWAY, AS PROPOSED
 ON THE MASTER PLAN OF HIGHWAYS
 HAD NOT BEEN ESTABLISHED AT THE
 TIME OF THE FILING OF THIS MAP.

Set 2" iron pipe, conc. plug & brass
 tag marked: "L. A. CO. ENGR.", "12"
 below surface by intersection.
 F. B. 3255-160

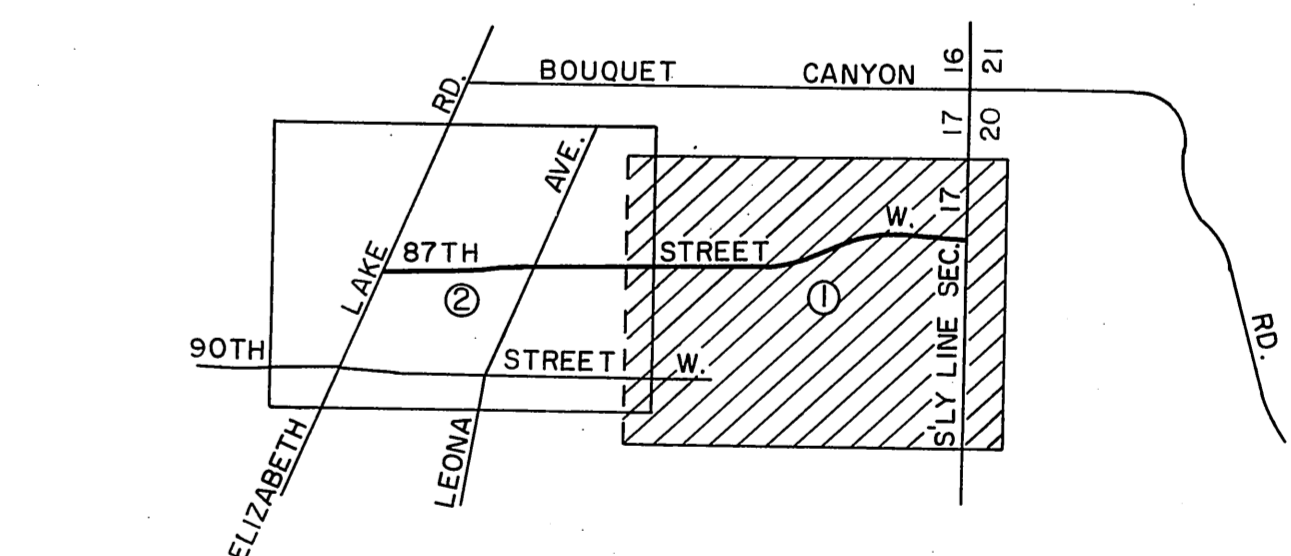
S.E. corner lot 23. Found Nothing.
 Set 2" iron pipe, conc. plug & brass
 tag marked: "L. A. CO. ENGR.", "12"
 below surface.
 F. B. 3255-160

SECTION 20
 T. 6 N., R. 13 W.

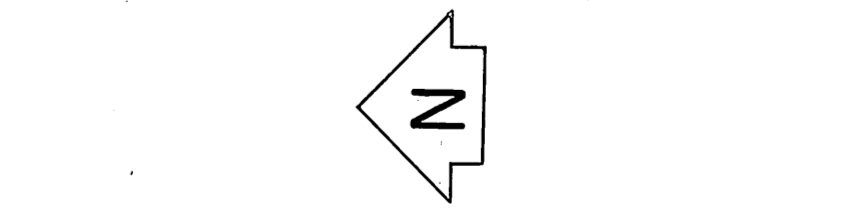
C.S.B-5258-2

MATCH LINE

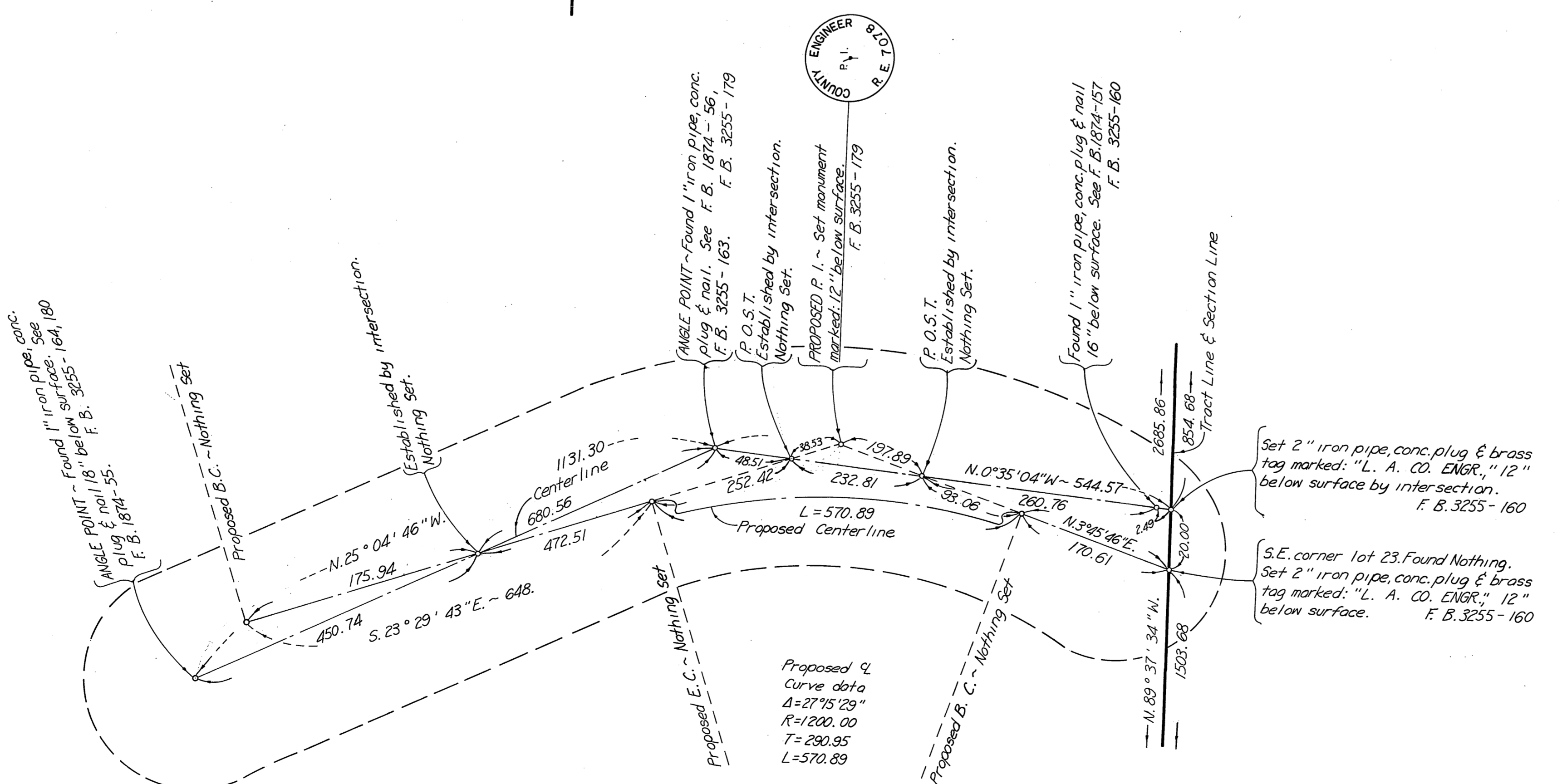
SEE DETAIL MAP
 (PVT. ST.)
 VIENTOS



INDEX MAP
 NOT TO SCALE



SCALE IN FEET



DETAIL MAP
 NOT TO SCALE

CLOSING CORNER
 Found monument marked "9" above
 surface. See F. B. 429-13 & C.S.B-1154.
 Replaced same with monument marked
 "6" below surface. F. B. 3255-158

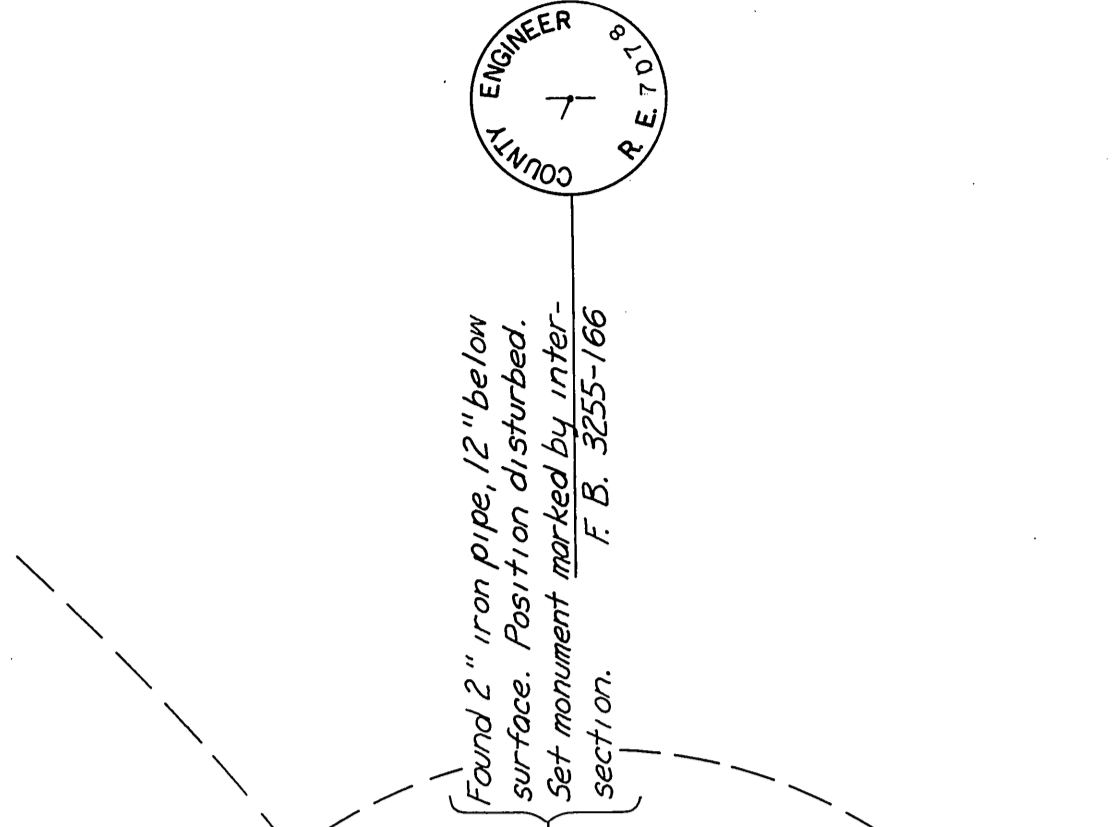
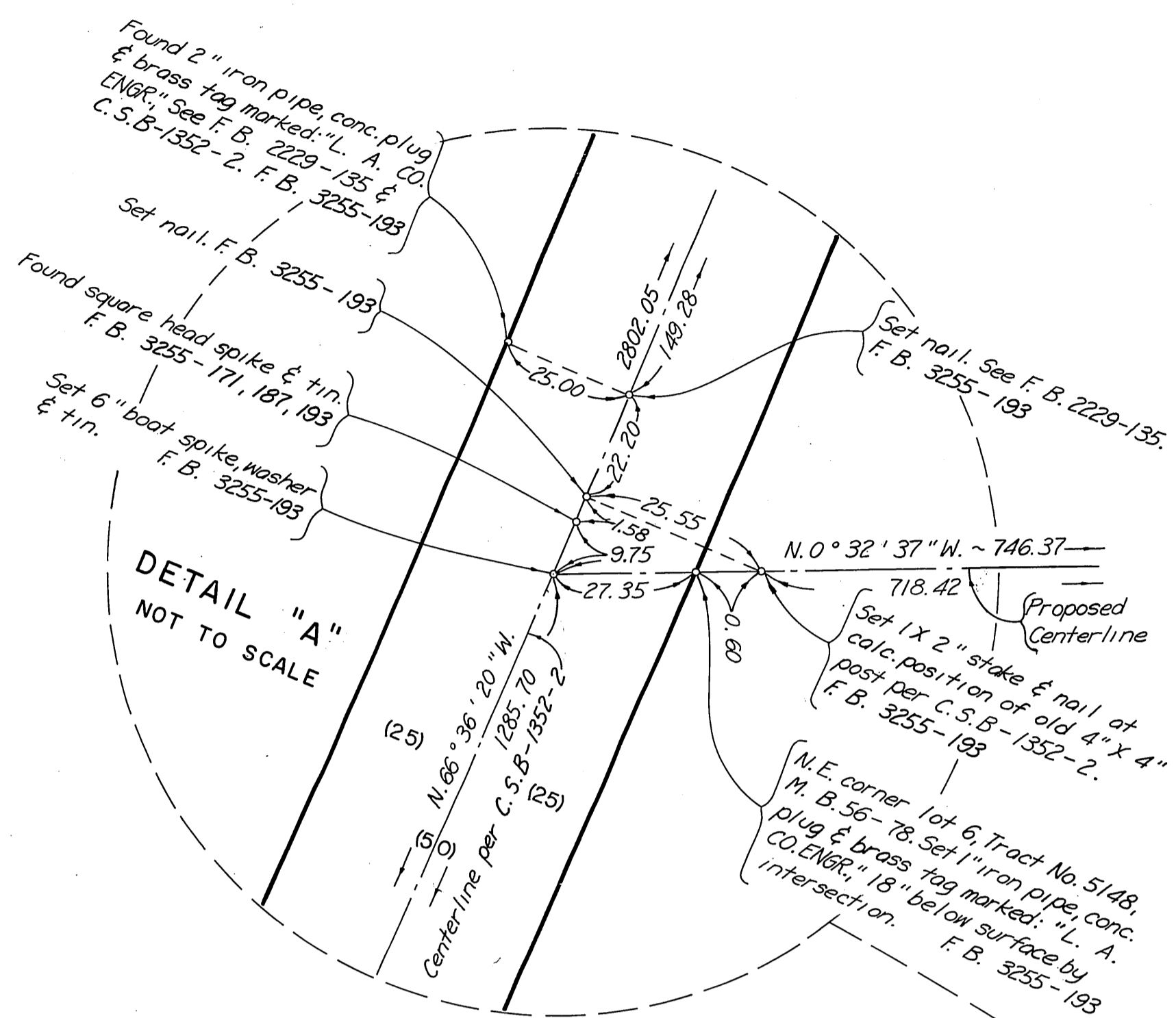
Found Nothing. SECTION CORNER
 Set monument marked: flush with
 surface on prod E at record
 distance (307.50) from the east
 per C.S.B-1154. F. B. 3255-185

COUNTY OF LOS ANGELES
 DEPARTMENT OF
 COUNTY ENGINEER
 HARVEY T. BRANDT—COUNTY ENGINEER
 PREPARED BY
 SURVEY DIVISION
 GEORGE J. FRANCISCHINI—DIVISION ENGINEER
 SURVEYED BY E. L. WRIGHT
 CHECKED BY R. MANOR
 DRAWN BY J. D. ALFRED

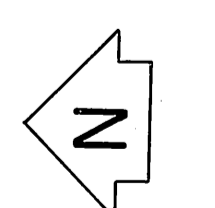
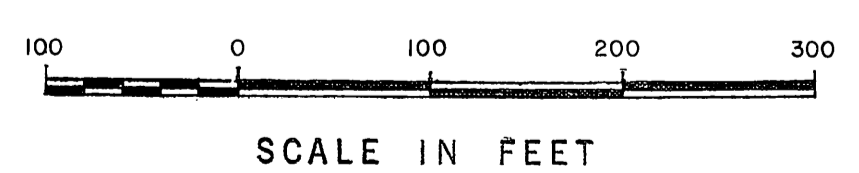
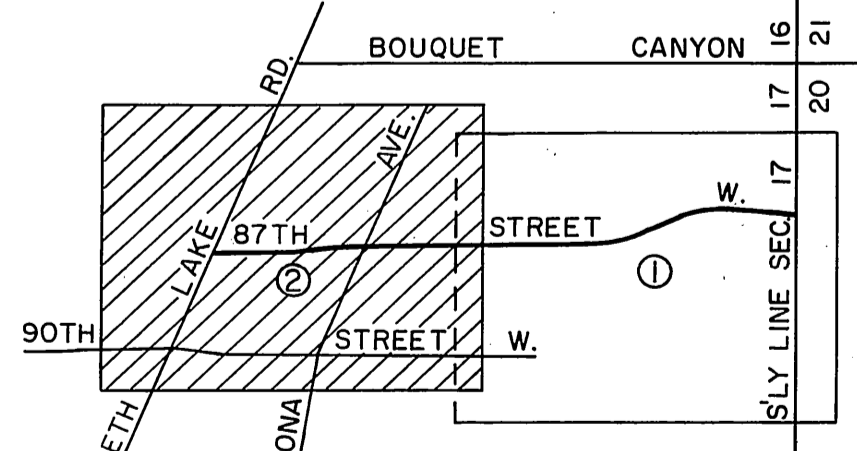
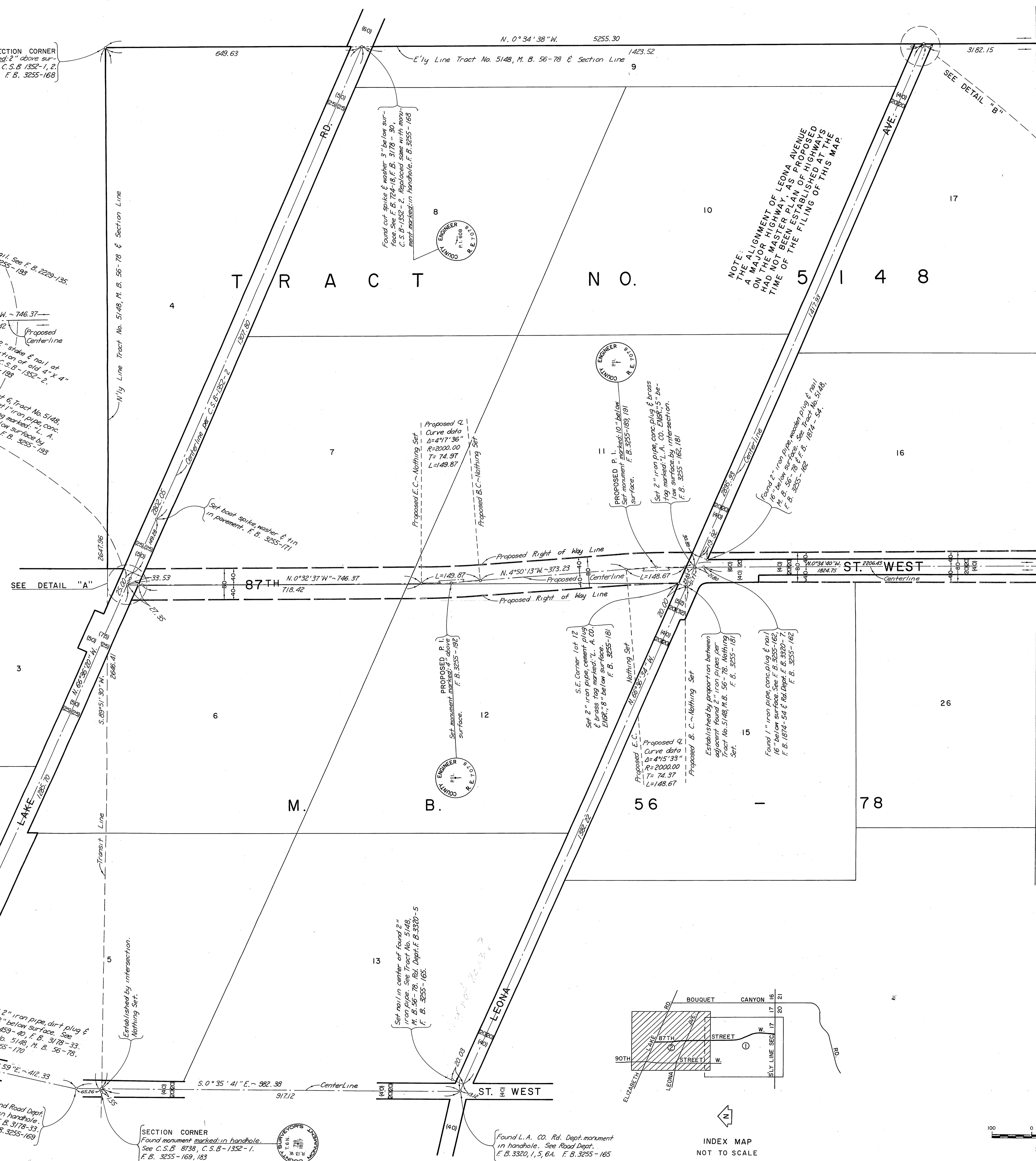
ALIGNMENT MAP OF
87TH STREET WEST
 FROM
 S'LY LINE OF SEC. 17, T. 6 N., R. 13 W.
 TO
ELIZABETH LAKE ROAD
 BASIS OF BEARINGS
 CENTERLINE OF ELIZABETH LAKE ROAD
 (N.66°36'20"W) AS SHOWN ON C.S.B-1352-2

COUNTY SURVEYOR'S MAP NO. B-5258		REVISION
SHEET 1 OF 2 SHEETS		NO. BY DATE
FILED: <i>Mar 4 1926</i>		
DRAWN BY: <i>R. J. Mitchell</i>		
SURVEYED FEB. 1973 - MAR. 1974		
REFERENCE F. B. 3255		
JOB NUMBER 0096.81	INDEX MAP NO. 64	

1/4 SECTION CORNER
Found monument marked 2" above sur-
face. F. B. 724-18, C.S.B. 1352-1, 2,
F. B. 3255-168



NOTE:
THE ALIGNMENT OF LEONA AVENUE
AS A MAJOR HIGHWAY, AS PROPOSED
ON THE MASTER PLAN OF HIGHWAYS
HAD NOT BEEN ESTABLISHED AT THE
TIME OF THE FILING OF THIS MAP.



COUNTY OF LOS ANGELES DEPARTMENT OF COUNTY ENGINEER HARVEY T. BRANDY-COUNTY ENGINEER PREPARED BY SURVEY DIVISION GEORGE J. FRANCISQUINI-DIVISION ENGINEER SURVEYED BY C. L. WRIGHT CHECKED BY R. MANOR DRAWN BY J. D. ALFRED	ALIGNMENT MAP OF 87TH STREET WEST FROM S'LY LINE OF SEC. 17, T. 6 N., R. 13 W. TO ELIZABETH LAKE ROAD BASIS OF BEARINGS CENTERLINE OF ELIZABETH LAKE ROAD (N. 66° 36' 20" W.) AS SHOWN ON C.S.B.-1352-2		COUNTY SURVEYOR'S MAP NO. B-5258 SHEET 2 OF 2 SHEETS FILED: 1974 MAR 19 76 R. J. MITCHELL DEPUTY SURVEYED FEB. 1973 - MAR. 1974 REFERENCE F. B. 3255 JOB NUMBER 0096-81	REVISION NO. BY DATE