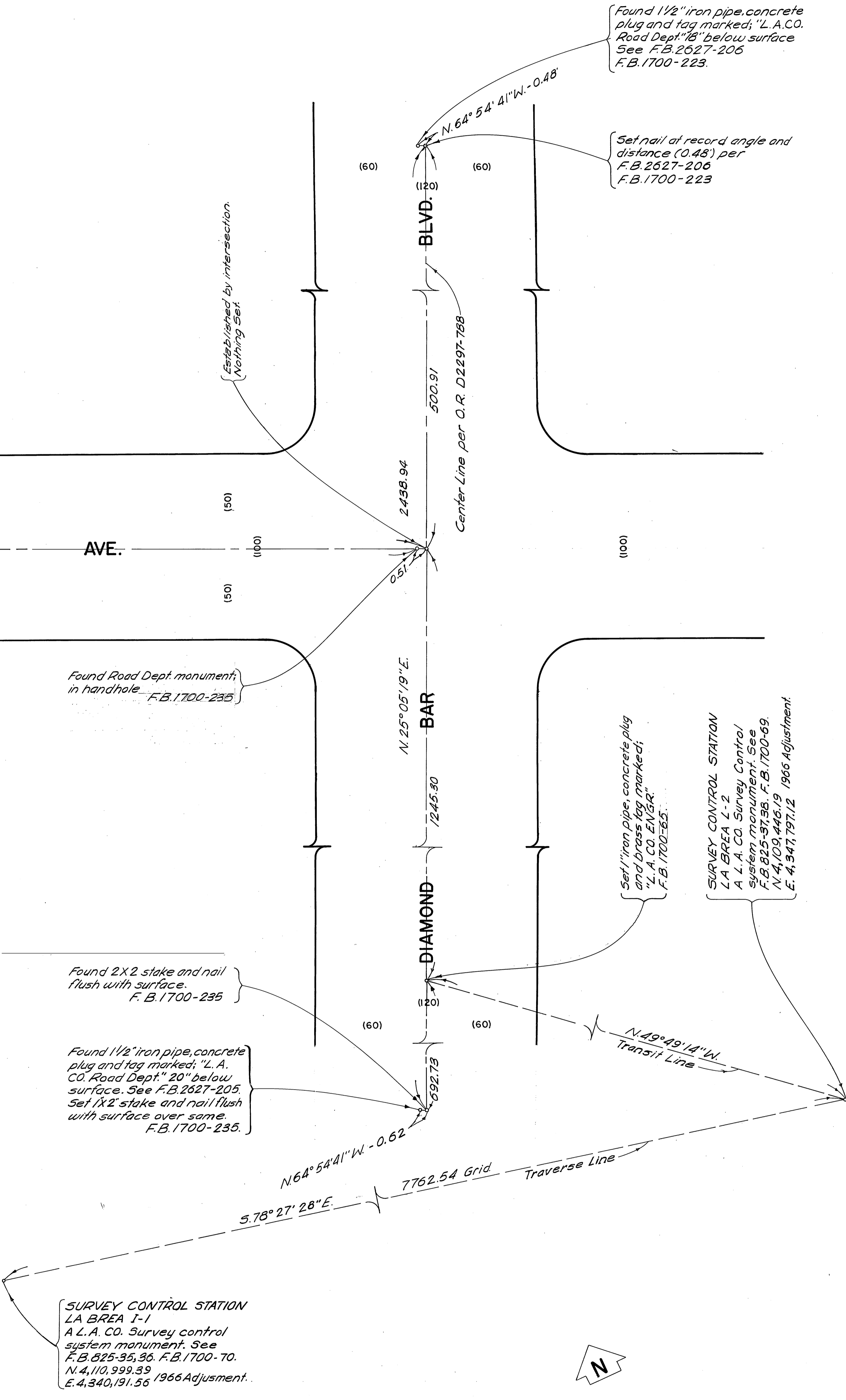
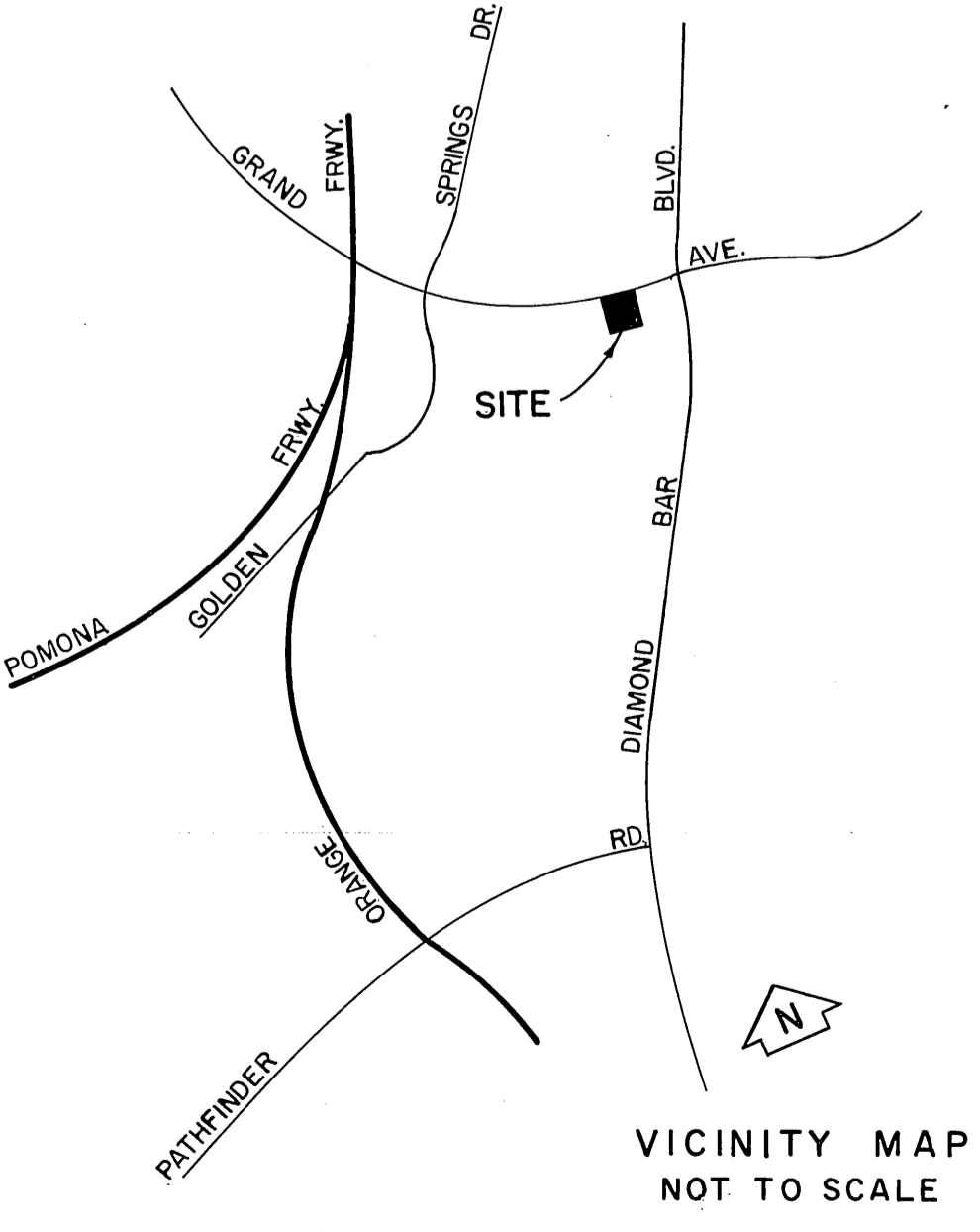


PORTION OF T. 2 S.

SECTION R. 9 W.



SCALE IN FEET

COUNTY OF LOS ANGELES DEPARTMENT OF COUNTY ENGINEER HARVEY T. BRANDT—COUNTY ENGINEER PREPARED BY SURVEY DIVISION GEORGE J. FRANCISCHINI—DIVISION ENGINEER SURVEYED BY <u>R. B. HOBSON</u> CHECKED BY <u>R. BARTHOLOMEW</u> DRAWN BY <u>R. GOINS</u>	BOUNDARY MAP OF DIAMOND BAR LIBRARY SITE FOR TOPOGRAPHY SEE SURVEY DIVISION FILE MAP NO. P.T. 567 BASIS OF BEARINGS CALIFORNIA COORDINATE SYSTEM ZONE 7		COUNTY SURVEYOR'S MAP NO. B-5263 SHEET 1 OF 1 SHEET FILED: <u>July 3, 1976</u> <u>R. J. McEwen</u> DEPUTY SURVEYED JULY 1975 REFERENCE F.B. 1700 JOB NUMBER 0047.32 INDEX MAP NO. 099-337	REVISION NO. BY DATE
	COUNTY ENGINEER R. E. 1725			NO. BY DATE