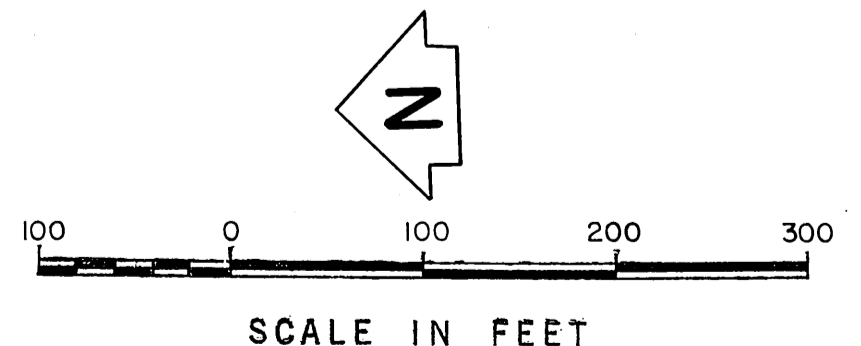
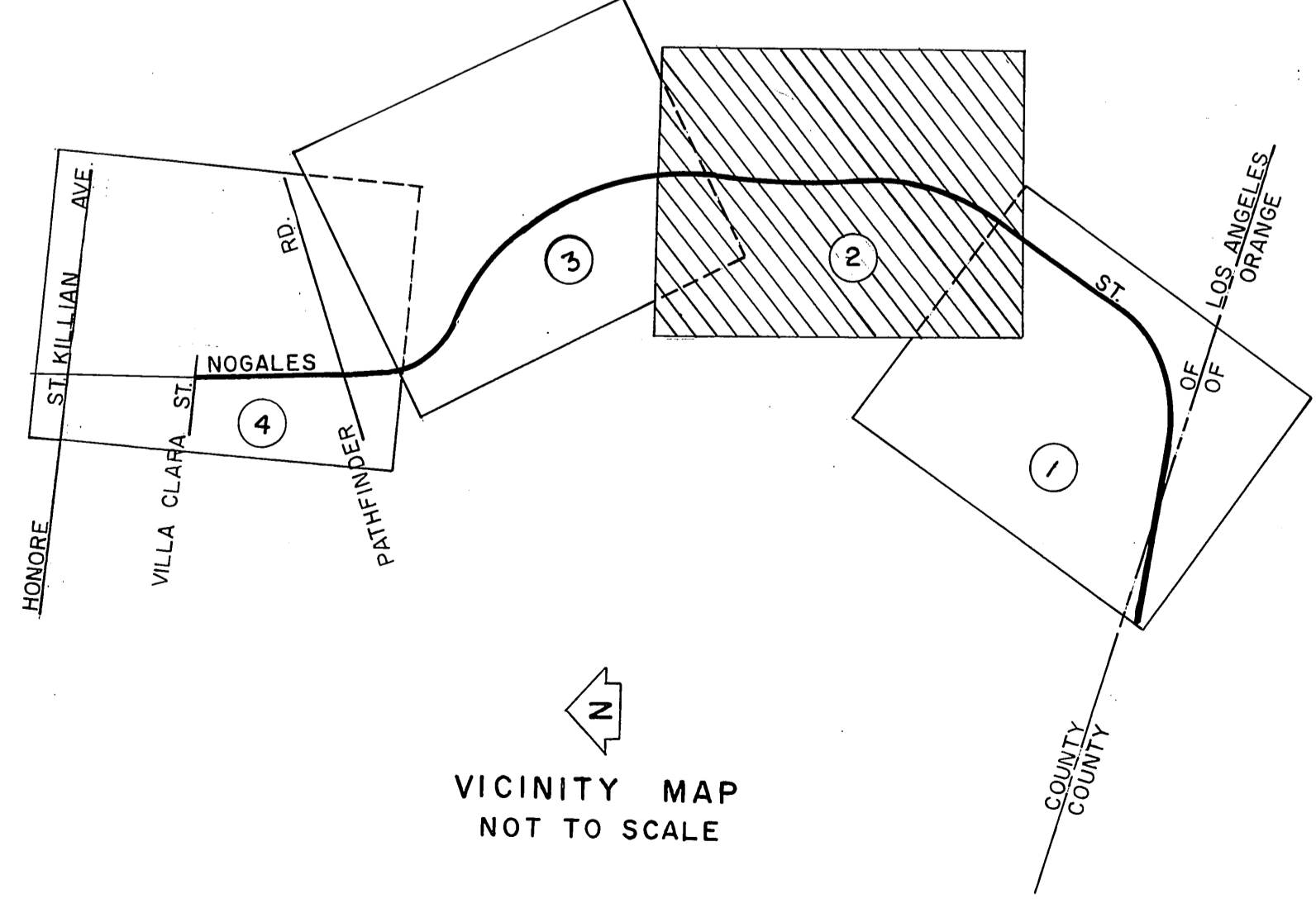
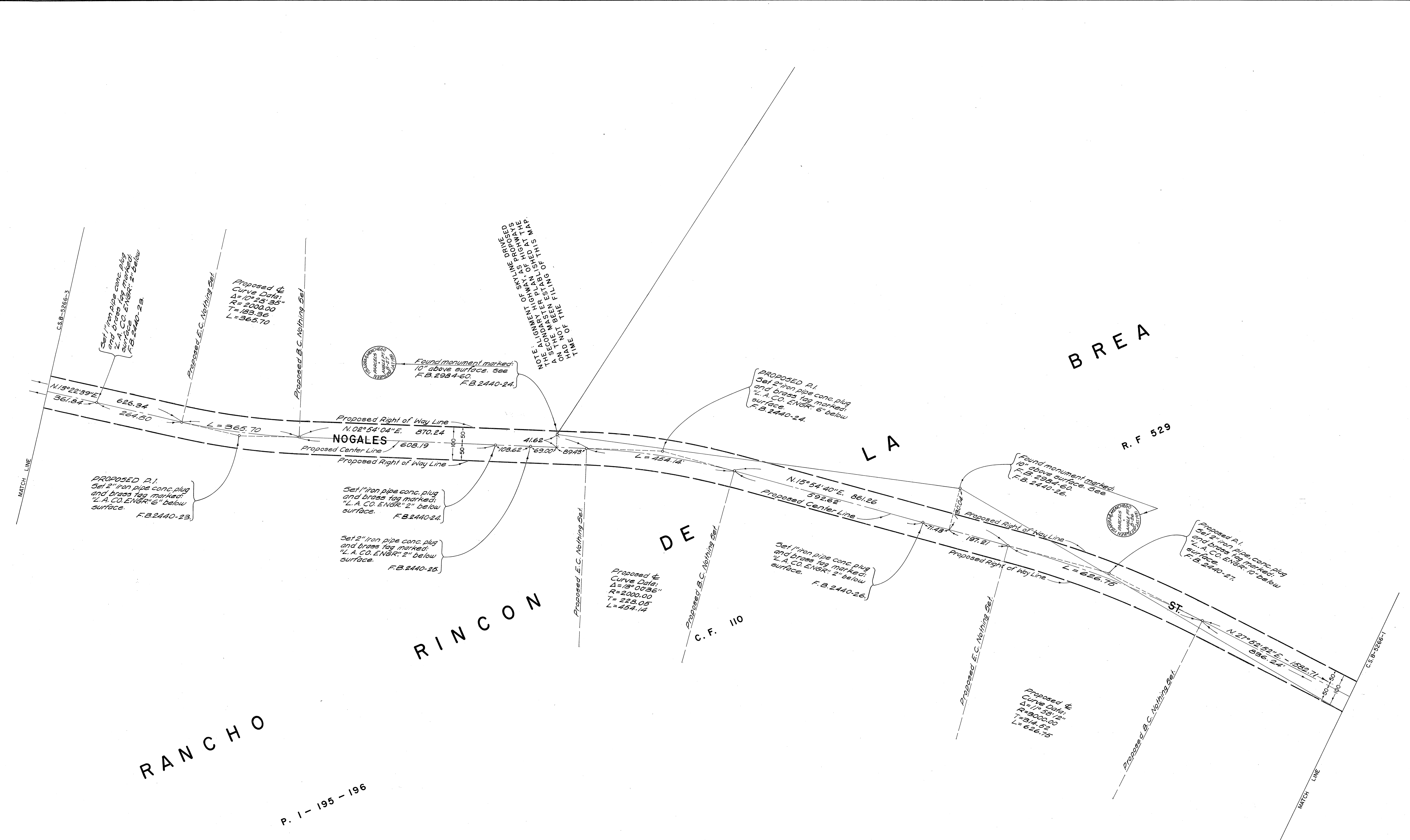


SCALE IN FEET

0 100 200 300

COUNTY OF LOS ANGELES DEPARTMENT OF COUNTY ENGINEER HARVEY T. BRANDT—COUNTY ENGINEER PREPARED BY SURVEY DIVISION GEORGE J. FRANCESCHINI—DIVISION ENGINEER SURVEYED BY <u>A. C. GUIZADO</u> CHECKED BY <u>R. BARTHOLOMEW</u> DRAWN BY <u>B. GOINS</u>	ALIGNMENT MAP OF NOGALES STREET FROM BOUNDARY OF ORANGE COUNTY TO VILLA CLARA ST. BASIS OF BEARINGS CALIFORNIA COORDINATE SYSTEM, ZONE 7		COUNTY SURVEYOR'S MAP NO. B-5266 SHEET 1 OF 4 SHEETS FILED: <u>Nov 28 1976</u> DEPUTY SURVEYED NOVEMBER 1973 REFERENCE F.B. 2440	REVISION NO. BY DATE
			JOB NUMBER 0075.03	INDEX MAP NO. 084-317



RANCHO

P. 1 - 195 - 196

RINCON

DE

LA

BREA

C. F. 110

R. F. 529

ST.

COUNTY OF LOS ANGELES DEPARTMENT OF COUNTY ENGINEER HARVEY T. BRANDT—COUNTY ENGINEER PREPARED BY SURVEY DIVISION GEORGE J. FRANCISCHINI—DIVISION ENGINEER SURVEYED BY <u>A. C. GUIZADO</u> CHECKED BY <u>R. BARTHOLOMEW</u> DRAWN BY <u>B. GOINS</u>	ALIGNMENT MAP OF NOGALES STREET FROM BOUNDARY OF ORANGE COUNTY TO VILLA CLARA ST. BASIS OF BEARINGS CALIFORNIA COORDINATE SYSTEM, ZONE 7		COUNTY SURVEYOR'S MAP NO. B-5266 SHEET 2 OF 4 SHEETS FILED: <u>June 28, 1976</u> <u>R. J. Mitchell</u> DEPUTY SURVEYED NOVEMBER 1973 REFERENCE F.B. 2440	REVISION NO. BY DATE
	JOB NUMBER 0075.03		INDEX MAP NO. 084-317	

RANCHO

RINCON
P. I. - 195 - 196

DE
C. F. 110

LA

R. F. 529

BREA

TRACT NO. 3941

M. B. LOT 3

Proposed ϕ Curve Data:
 $\Delta = 36^{\circ} 43' 57''$
 $R = 2000.00$
 $T = 664.00$
 $L = 1282.21$

PROPOSED P.I.
Set 2" iron pipe conc. plug
and brass tag marked:
"L.A. CO. ENGR." below
surface. F.B. 2440-20.

PROPOSED P.I.
Set 2" iron pipe conc. plug
and brass tag marked:
"L.A. CO. ENGR." below
surface. F.B. 2440-22.

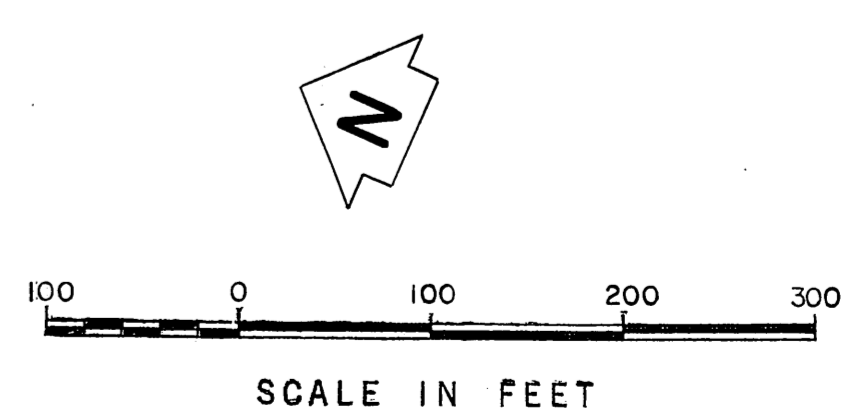
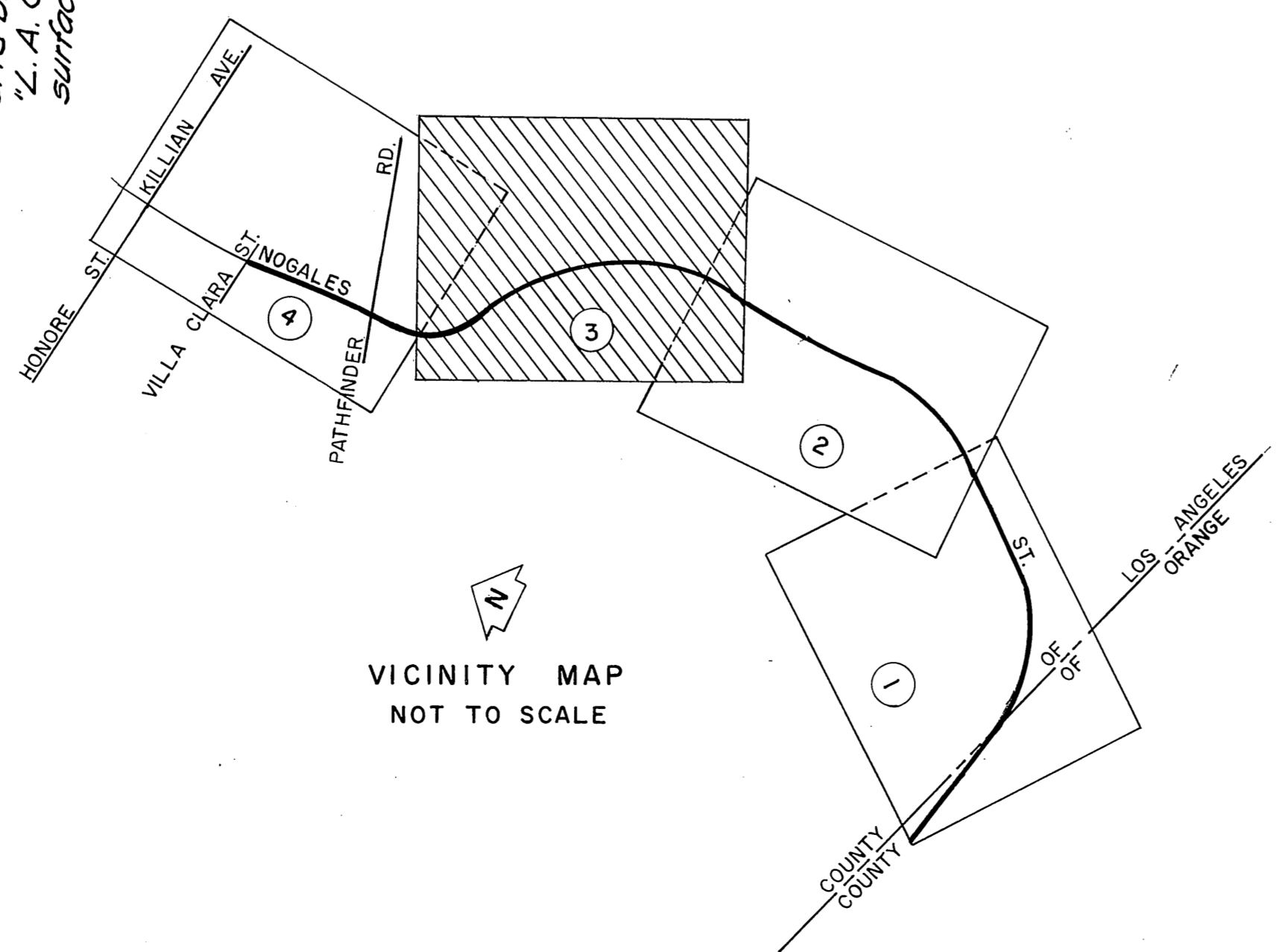
Proposed ϕ Curve Data:
 $\Delta = 30^{\circ} 36' 44''$
 $R = 1600.00$
 $T = 437.89$
 $L = 854.86$

Proposed ϕ Curve Data:
 $\Delta = 47^{\circ} 43' 16''$
 $R = 1800.00$
 $T = 572.84$
 $L = 1094.41$

POST
Set 2" iron pipe conc. plug
and brass tag marked:
"L.A. CO. ENGR." below
surface by interior angle.
F.B. 2440-19.

PROPOSED P.I.
Set 2" iron pipe conc. plug
and brass tag marked:
"L.A. CO. ENGR." below
surface. F.B. 2440-18.

Found monument marked:
"L.A. CO. ENGR." below
surface. F.B. 2440-21.
C.S.B. 5265-4



COUNTY OF LOS ANGELES DEPARTMENT OF COUNTY ENGINEER HARVEY T. BRANDY—COUNTY ENGINEER PREPARED BY SURVEY DIVISION GEORGE J. FRANCISCHINI—DIVISION ENGINEER SURVEYED BY A. C. GUIZADO CHECKED BY R. BARTHOLOMEW DRAWN BY B. GOINS	ALIGNMENT MAP OF NOGALES STREET FROM BOUNDARY OF ORANGE COUNTY TO VILLA CLARA ST. BASIS OF BEARINGS CALIFORNIA COORDINATE SYSTEM, ZONE 7		COUNTY SURVEYOR'S MAP NO. B-5266 SHEET 3 OF 4 SHEETS FILED: <i>[Signature]</i> 1973 DEPUTY SURVEYED NOVEMBER 1973 REFERENCE F. B. 2440 JOB NUMBER 0075.03 INDEX MAP NO. 684-317	REVISION NO. BY DATE

