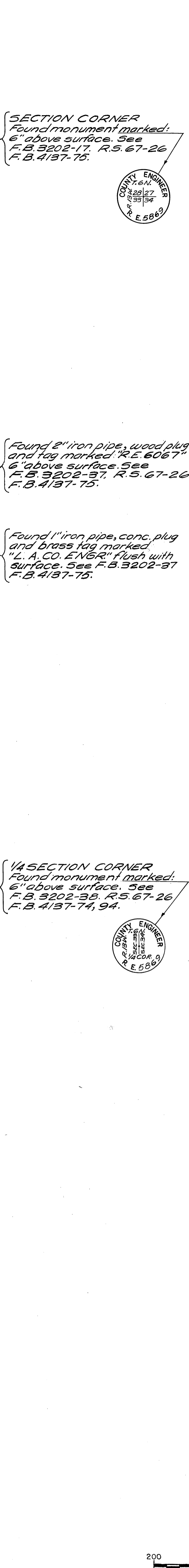
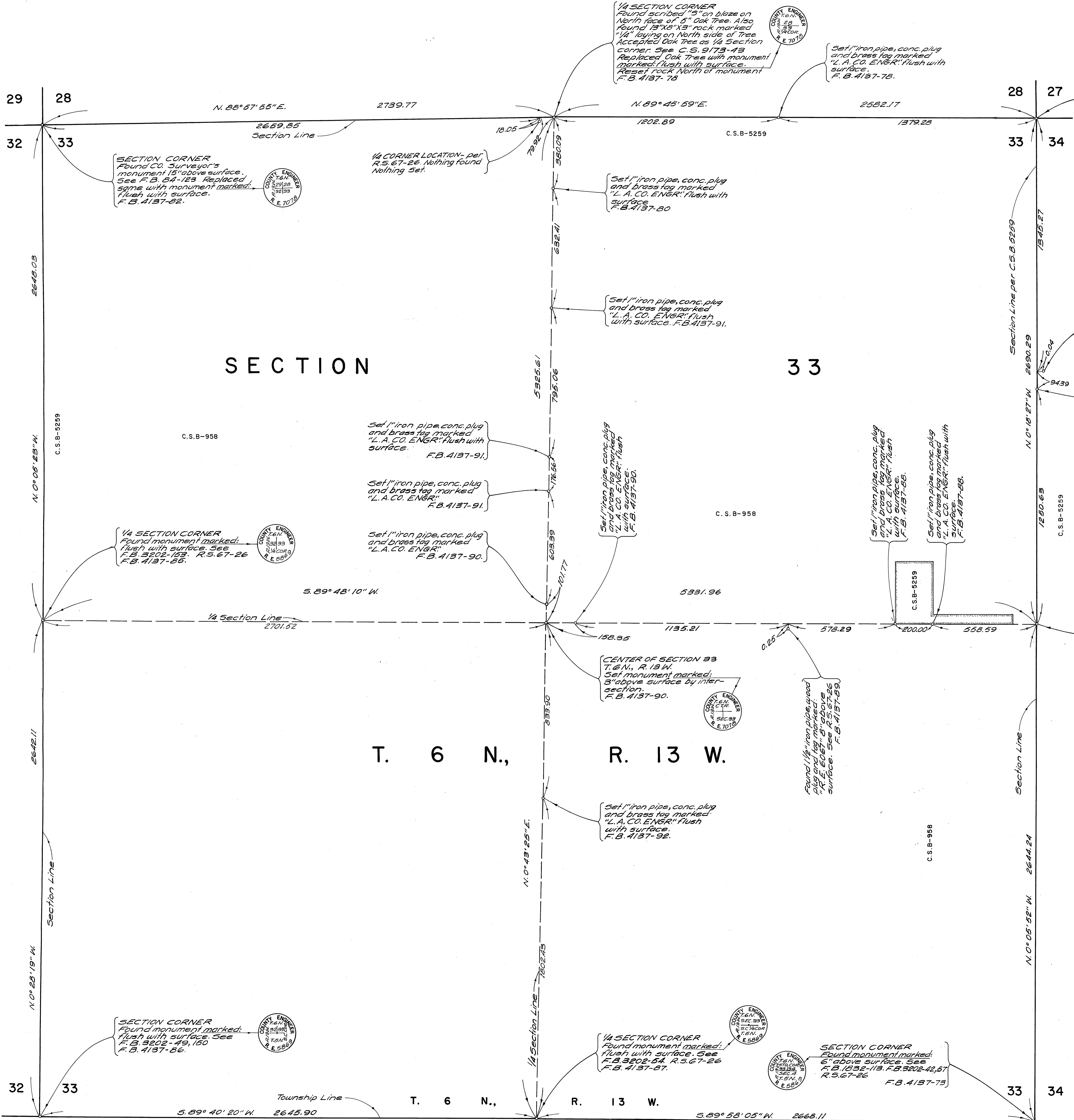


C.2-B-251



SCALE IN FEET

COUNTY OF LOS ANGELES DEPARTMENT OF COUNTY ENGINEER HARVEY T. BRANDT—COUNTY ENGINEER PREPARED BY SURVEY DIVISION GEORGE J. FRANCISCHINI—DIVISION ENGINEER SURVEYED BY <u>K. KING</u> CHECKED BY <u>R. BARTHOLOMEW</u> DRAWN BY <u>B. GOINS</u>	MAP OF SECTION 33 T. 6 N., R. 13 W.		COUNTY SURVEYOR'S MAP NO. B-5271 SHEET 1 OF 1 SHEET FILED: <u>March 3, 1976</u> <u>R. J. Mitchell</u> COUNTY SURVEYOR APRIL 1975 REFERENCE F.B. 4137	REVISION NO. BY DATE
	BASIS OF BEARINGS THE E'LY LINE OF THE N.E. 1/4 OF SECTION 33, T. 6 N., R. 13 W. (N. 0° 18' 27" W.) AS SHOWN ON C.S.B-5259.			JOB NUMBER 0302.01
				INDEX MAP NO. 64

C.2-B-251