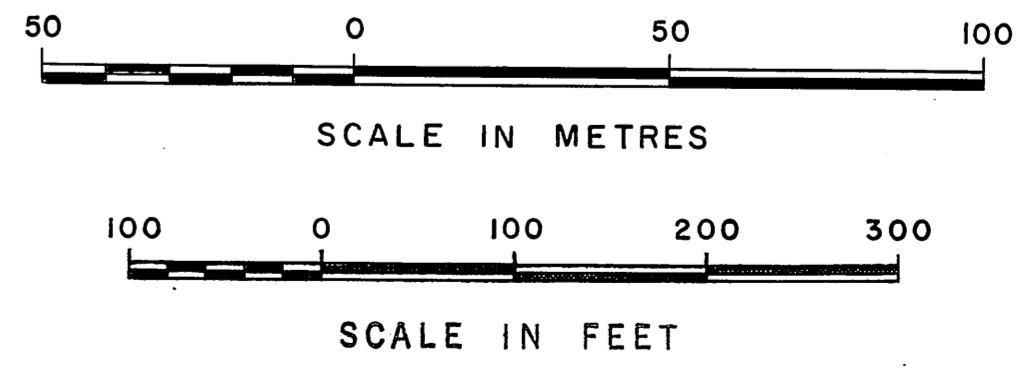
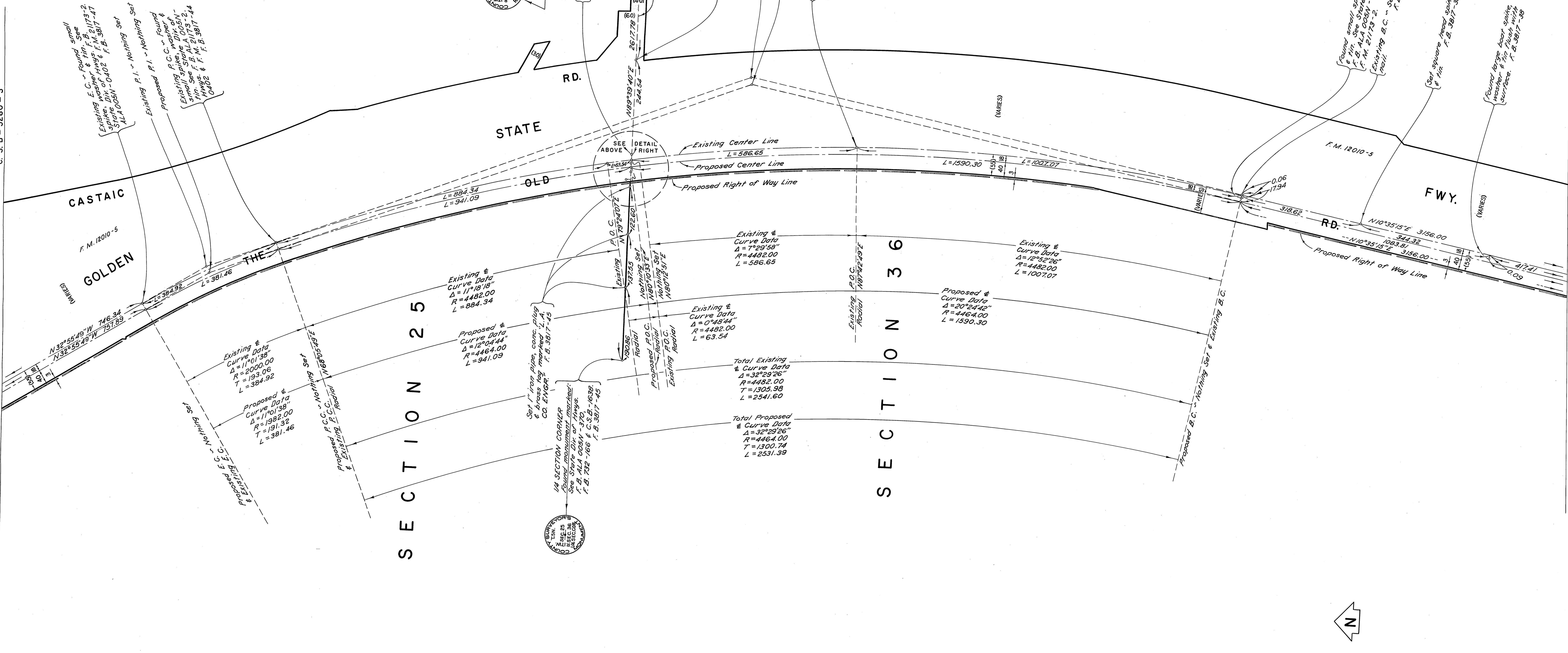


DETAIL MAP NOT TO SCALE

INDEX MAP NOT TO SCALE



COUNTY OF LOS ANGELES DEPARTMENT OF COUNTY ENGINEER STEPHEN J. KOONCE - ACTING COUNTY ENGINEER PREPARED BY SURVEY DIVISION RICHARD J. MITCHELL - DIVISION ENGINEER SURVEYED BY R. C. DALE CHECKED BY A. C. GUIZADO DRAWN BY J. F. MERRILL	<b>ALIGNMENT MAP OF</b> <b>THE OLD ROAD</b> FROM <b>NW'LY. LINE RANCHO SAN FRANCISCO</b> TO <b>CAMINO DEL VALLE</b> BASIS OF BEARINGS THE CENTERLINE OF THE OLD ROAD (N18°34'09"W) AS SHOWN ON C.S.B - 5103-2		COUNTY SURVEYOR'S MAP NO. <b>B-5280</b> SHEET 1 OF 3 SHEETS FILED <i>10/27/77</i> <i>Richard J. Mitchell</i> DEPUTY SURVEYED OCT. 1969 - JUN. 1970 REFERENCE F. B. 2220 F. B. 3817 JOB NUMBER 0096.62 INDEX MAP NO. 279 - 097	REVISION NO. BY DATE

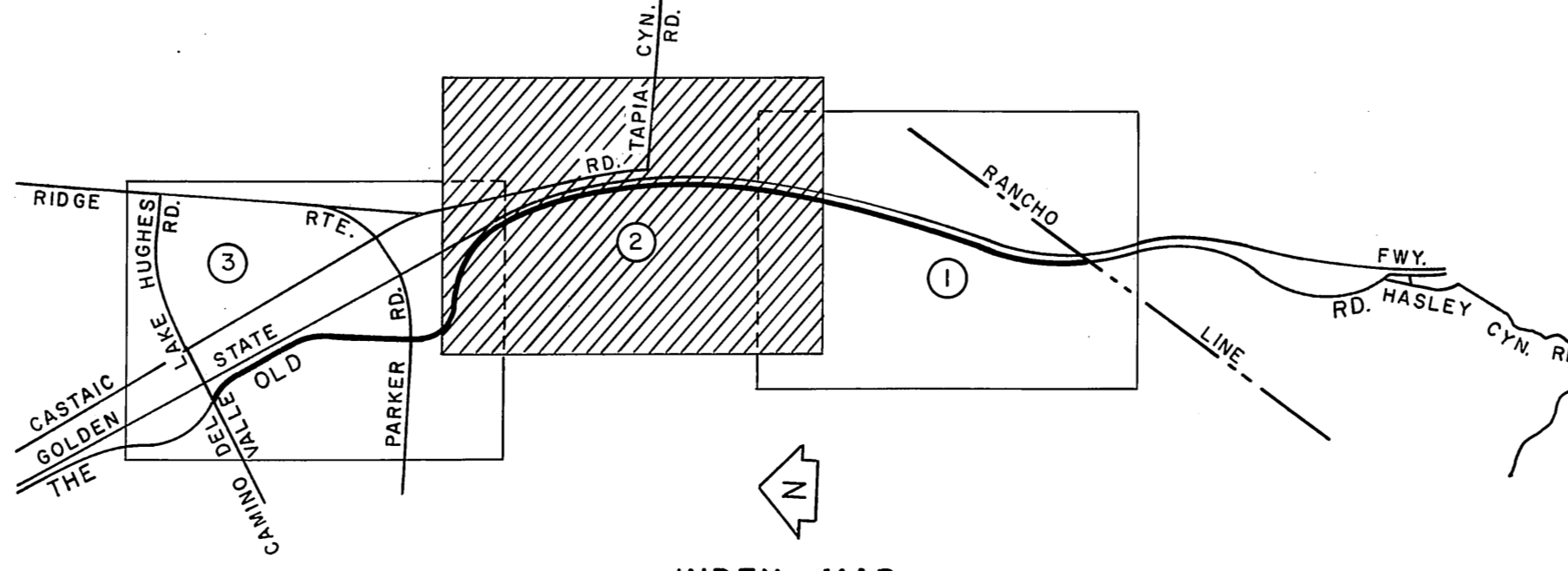
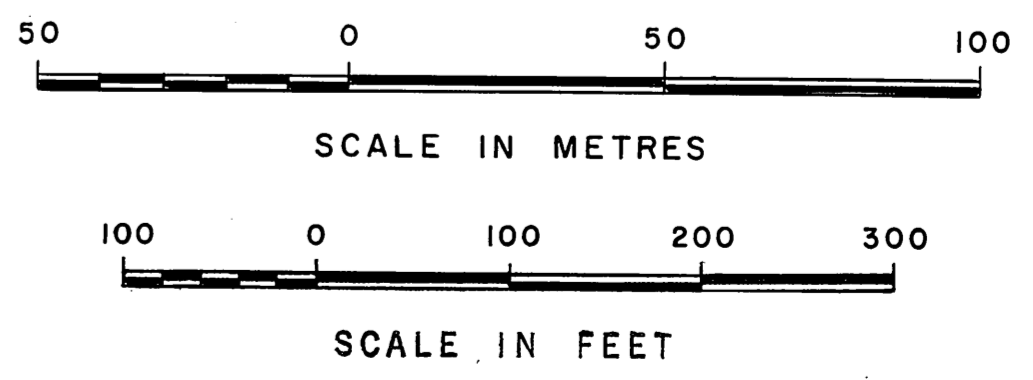


T. 5 N., R. 17 W.

T. 5 N., R. 17 W.

GOLDEN STATE

DETAIL MAP NOT TO SCALE



COUNTY OF LOS ANGELES DEPARTMENT OF COUNTY ENGINEER STEPHEN J. KOONCE-ACTING COUNTY ENGINEER PREPARED BY SURVEY DIVISION RICHARD J. MITCHELL-DIVISION ENGINEER SURVEYED BY R. C. DALE CHECKED BY D. SAPPPELL DRAWN BY J. F. MERRILL	ALIGNMENT MAP OF <b>THE OLD ROAD</b> FROM <b>NW'LY. LINE RANCHO SAN FRANCISCO</b> TO <b>CAMINO DEL VALLE</b> BASIS OF BEARINGS THE CENTERLINE OF THE OLD ROAD (N18°34'09"W) AS SHOWN ON C.S. B - 5103-2		COUNTY SURVEYOR'S MAP NO. <b>B-5280</b> SHEET 2 OF 3 SHEETS FILED: <u>JUNE 21 1977</u> <i>Richard J. Mitchell</i> DEPUTY SURVEYOR OCT. 1969 - JUN. 1970 REFERENCE F. B. 2220 F. B. 3817 JOB NUMBER 0096.62 279 - 097	REVISION NO. BY DATE

