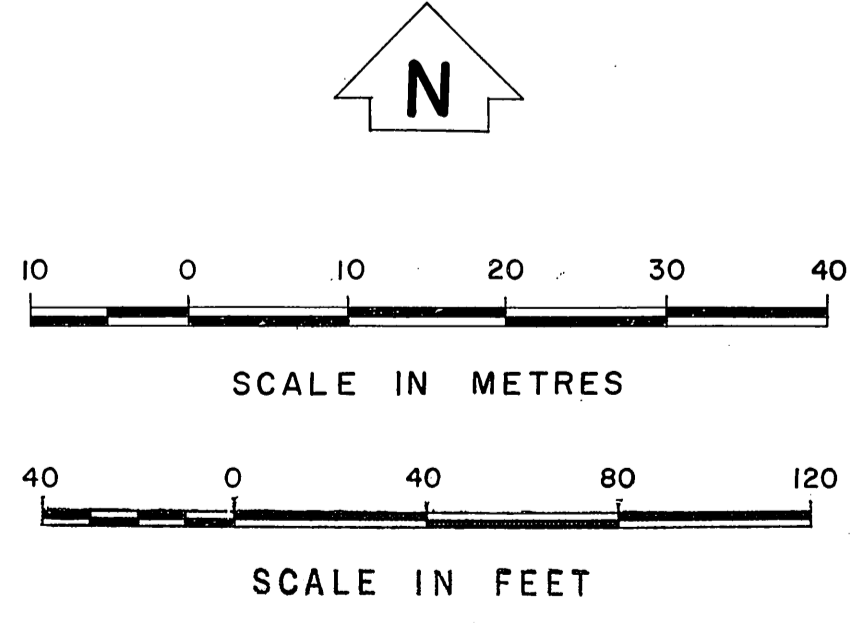
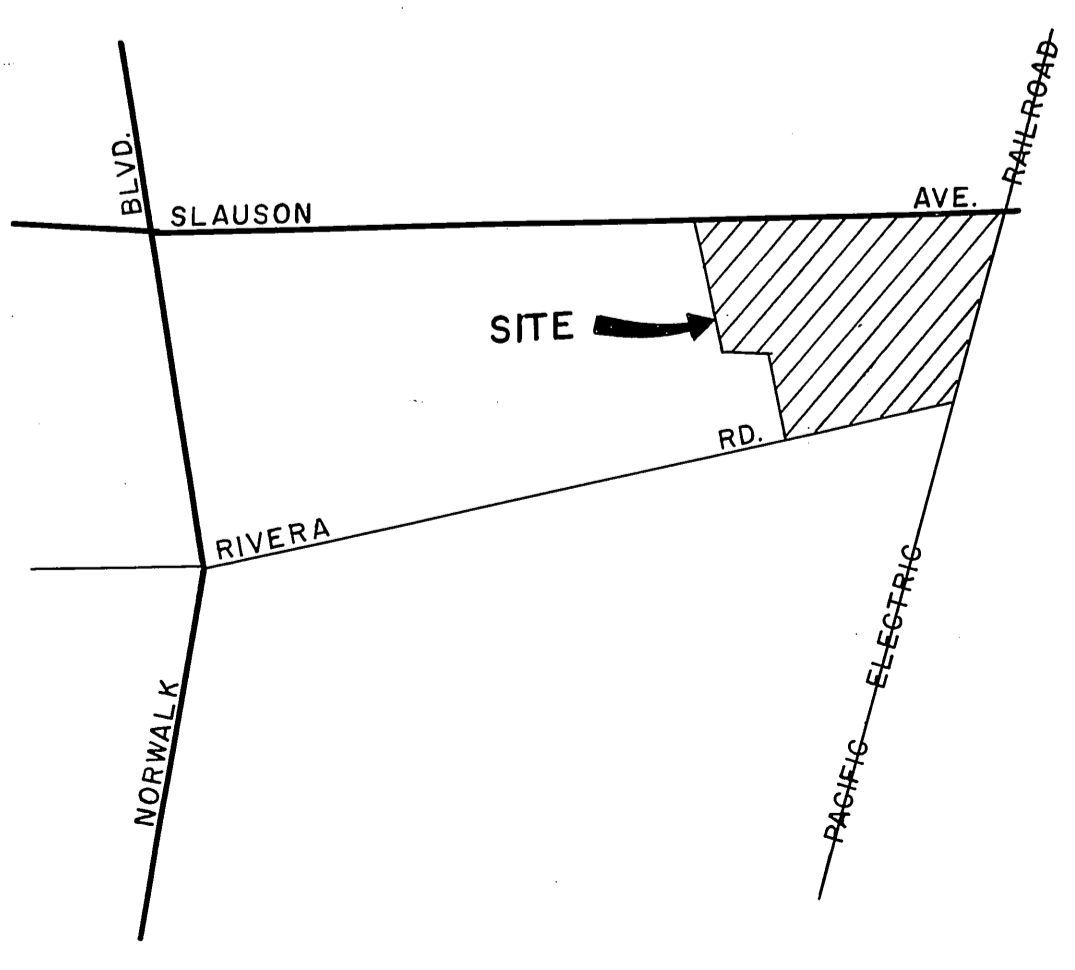
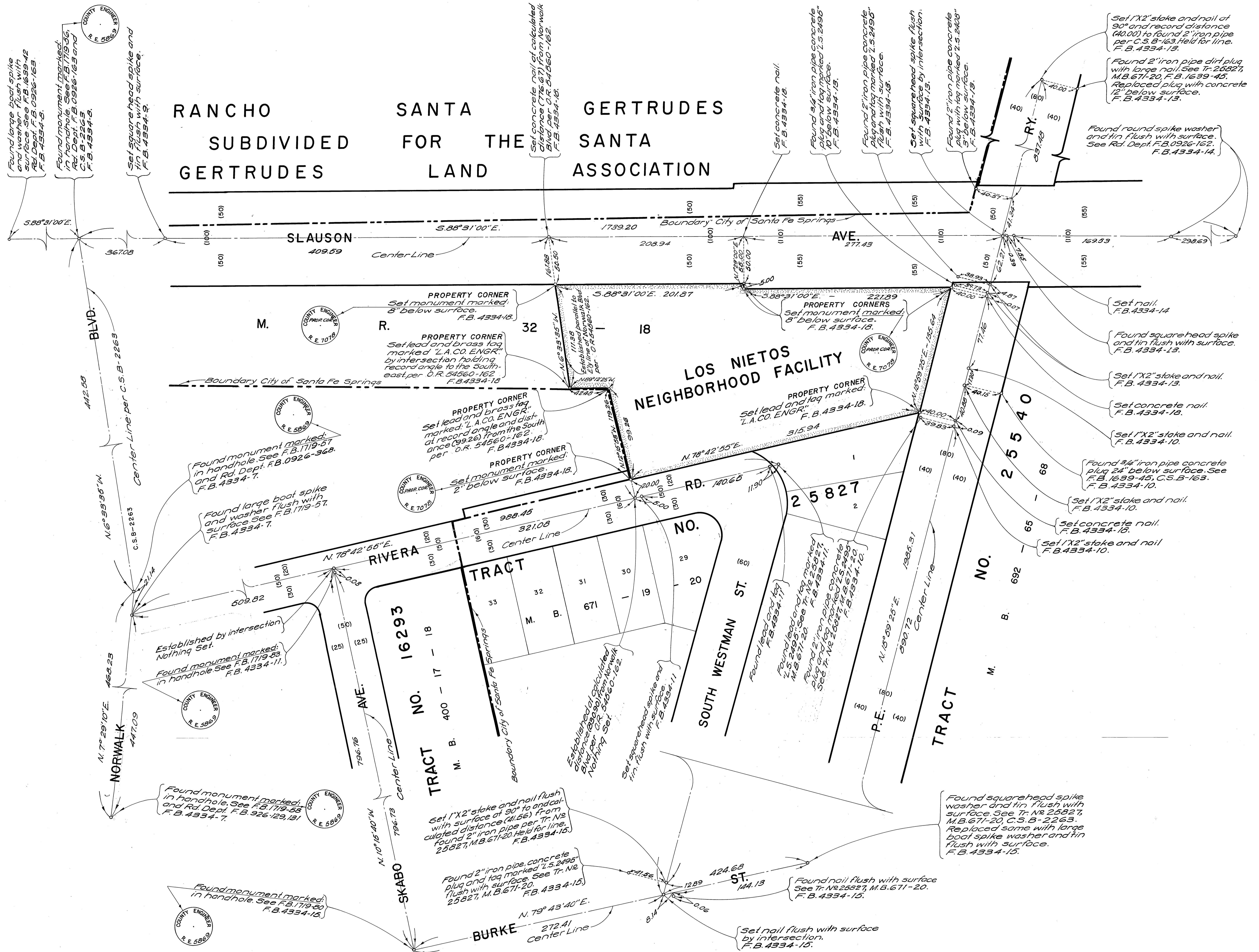


TABLE OF METRIC EQUIVALENT

INCHES	CENTIMETRES
3/4	1.9
1	2.5
2	5.1
3	7.6
4	10.2
5	12.7
6	15.2
8	20.3
10	25.4
12	30.5
24	60.1

FEET	METRES	FEET	METRES
0.03	0.009	99.26	30.254
0.06	0.015	100.00	30.480
0.07	0.021	110.00	33.528
0.09	0.027	111.38	33.949
0.39	0.119	119.26	36.351
4.57	1.404	125.64	41.343
5.00	1.524	140.65	42.870
7.55	2.301	144.13	43.931
8.14	2.481	161.08	49.341
11.90	3.627	169.59	51.673
12.99	3.959	201.87	61.530
17.30	5.273	208.94	63.685
20.00	6.096	221.89	67.632
21.14	6.443	272.41	83.037
25.00	7.620	277.43	84.561
30.00	9.144	294.69	91.041
38.93	11.866	315.94	96.299
39.73	12.110	321.09	97.866
39.89	12.140	367.08	111.886
40.00	12.192	409.59	124.843
40.15	12.238	424.68	129.443
40.57	12.366	442.58	134.899
40.88	12.460	447.09	136.273
41.34	12.600	466.23	142.717
41.56	12.668	505.82	154.893
42.48	12.948	776.67	236.729
50.00	15.240	796.73	242.844
50.90	15.592	796.76	242.853
59.00	18.184	830.90	253.299
60.00	18.288	837.48	255.264
62.21	18.962	890.72	271.492
77.46	23.610	988.45	301.280
80.00	24.384	1199.20	365.109
90.00	27.432	1989.31	605.724



COUNTY OF LOS ANGELES DEPARTMENT OF COUNTY ENGINEER JAMES T. ROSTRON CHIEF COUNTY ENGINEER PREPARED BY SURVEY DIVISION RICHARD J. MITCHELL - DIVISION ENGINEER SURVEYED BY E. LANDA CHECKED BY M. DOSOKY DRAWN BY B. GOINS	<b>BOUNDARY MAP OF</b> <b>LOS NIETOS</b> <b>NEIGHBORHOOD FACILITY</b> <b>SANTA FE SPRINGS</b> FOR TOPOGRAPHY SEE SURVEY DIVISION FILE MAP NO. P.T. J158-1 BASIS OF BEARINGS THE CENTER LINE OF NORWALK BLVD. (N. 6° 33' 35" W.) AS SHOWN ON C.S.B-2263.	COUNTY SURVEYOR'S MAP NO. <b>B-5293</b>	REVISION NO. BY DATE
		SHEET 1 OF 1 SHEET FILED: <i>October 13, 1976</i> <i>R.J. Mitchell</i> DEPUTY	SURVEYED APRIL 1976 REFERENCE F.B. 4334