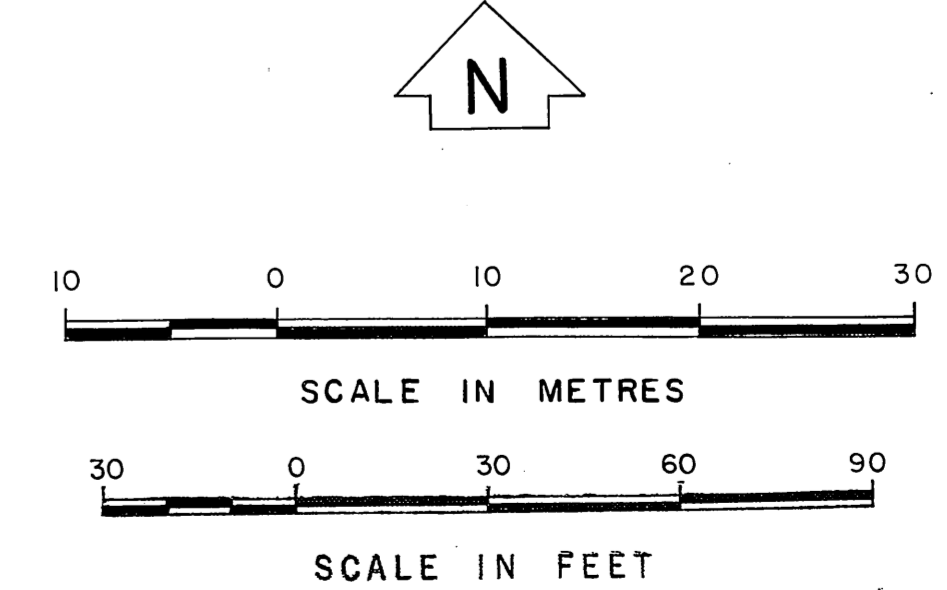
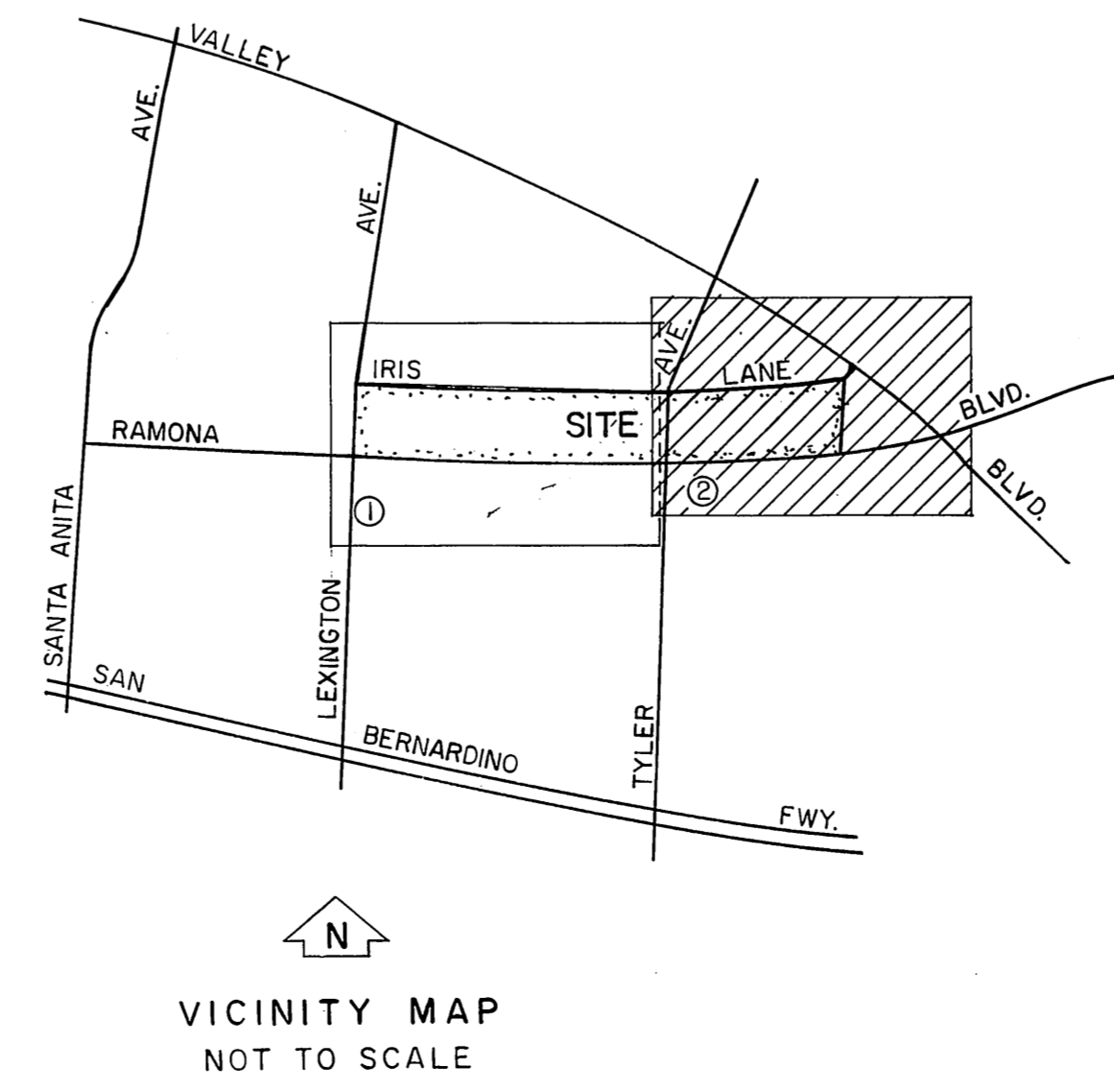
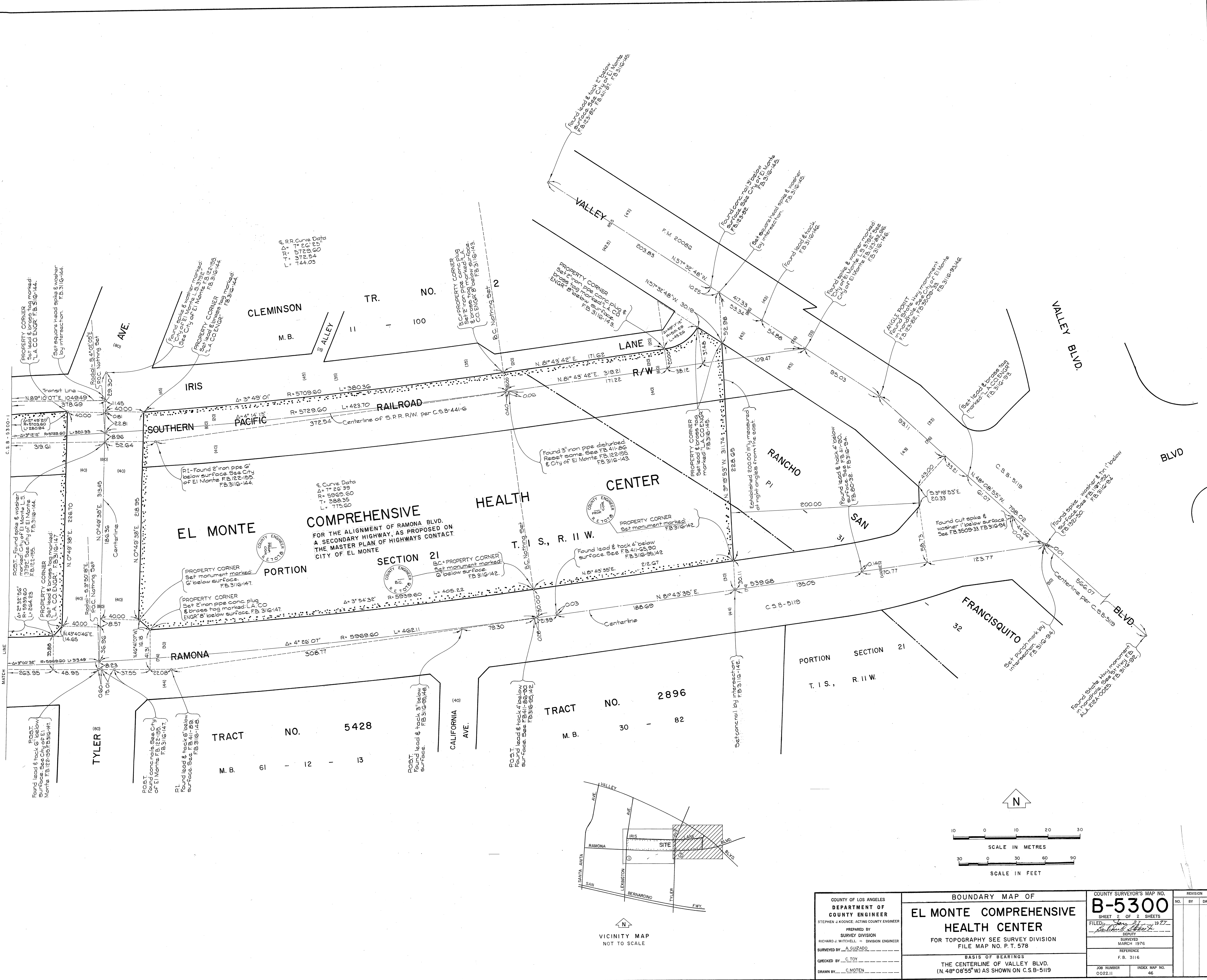


COUNTY OF LOS ANGELES DEPARTMENT OF COUNTY ENGINEER STEPHEN J. KOONCE - ACTING COUNTY ENGINEER PREPARED BY SURVEY DIVISION RICHARD J. MITCHELL - DIVISION ENGINEER SURVEYED BY A. GUZADO CHECKED BY C. TOY DRAWN BY C. MOTEN	BOUNDARY MAP OF EL MONTE COMPREHENSIVE HEALTH CENTER FOR TOPOGRAPHY SEE SURVEY DIVISION FILE MAP NO. P. T. 578 BASIS OF BEARINGS THE CENTERLINE OF VALLEY BLVD. (N. 48° 08' 55" W) AS SHOWN ON C.S.B-5119		COUNTY SURVEYOR'S MAP NO. B-5300 SHEET 1 OF 2 SHEETS FILED: Jan 27 1977 COUNTY ENGINEER SURVEYED MARCH 1976 REFERENCE F.B. 3116 JOB NUMBER 0022.11 INDEX MAP NO. 46	REVISION NO. BY DATE



COUNTY OF LOS ANGELES DEPARTMENT OF COUNTY ENGINEER STEPHEN A. KOONCE, ACTING COUNTY ENGINEER PREPARED BY SURVEY DIVISION RICHARD J. MITCHELL - DIVISION ENGINEER SURVEYED BY <u>A. GUZADO</u> CHECKED BY <u>C. TOY</u> DRAWN BY <u>C. MOTEN</u>	BOUNDARY MAP OF EL MONTE COMPREHENSIVE HEALTH CENTER FOR TOPOGRAPHY SEE SURVEY DIVISION FILE MAP NO. P. T. 578		COUNTY SURVEYOR'S MAP NO. B-5300 SHEET 2 OF 2 SHEETS FILED <u>Jan 27 1977</u> DEPUTY SURVEYED MARCH 1976 REFERENCE F.B. 3116 JOB NUMBER O022.11 INDEX MAP NO. 46		REVISION NO. BY DATE
	BASIS OF BEARINGS THE CENTERLINE OF VALLEY BLVD. (N. 48° 08' 55" W.) AS SHOWN ON C.S.B-5119				