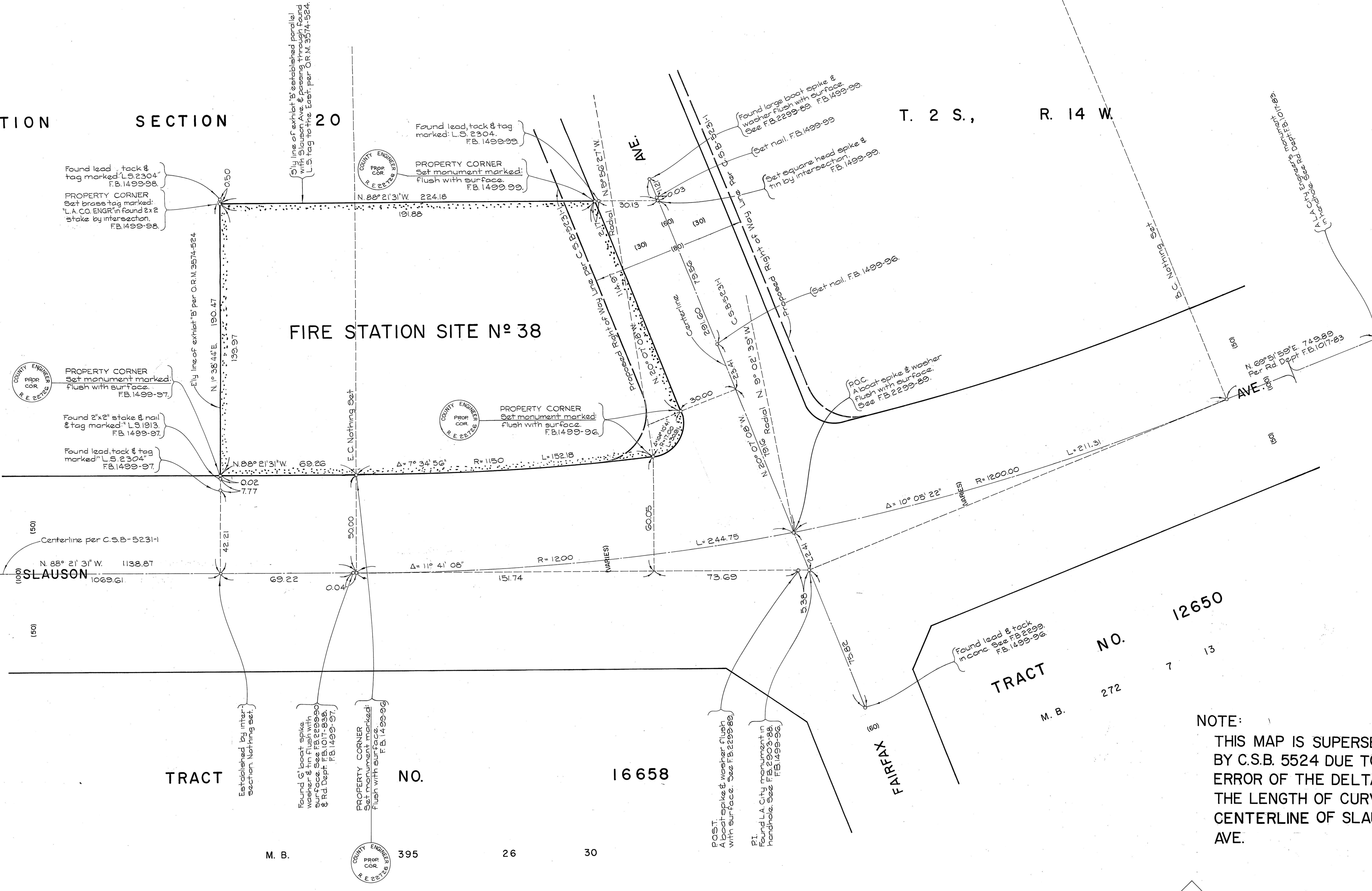


PORTION SECTION 20

T. 2 S., R. 14 W.

FIRE STATION SITE N° 38



Centerline Curve Data
 Per C.S.B. 5231-1
 $\Delta = 21^\circ 40' 30''$
 $R = 1200.00$
 $L = 230.00$
 $L = 456.06$

L.A. City Engineer's monument
 in handle. See R.D.B. 10717.
 F.B. 2205-90.

L.A. City Engineer's monument
 in handle. See R.D.B. 10717.
 F.B. 2205-90.

COUNTY ENGINEER
 PREP COR
 R.E. 22159

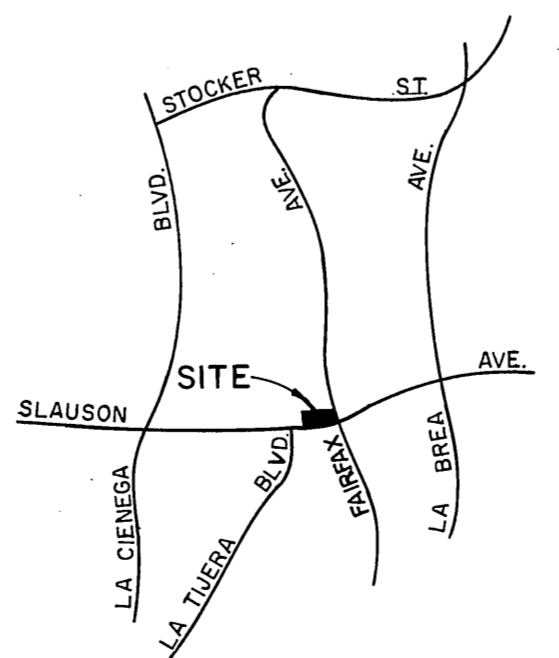
COUNTY ENGINEER
 PREP COR
 R.E. 22159

COUNTY ENGINEER
 PREP COR
 R.E. 22159

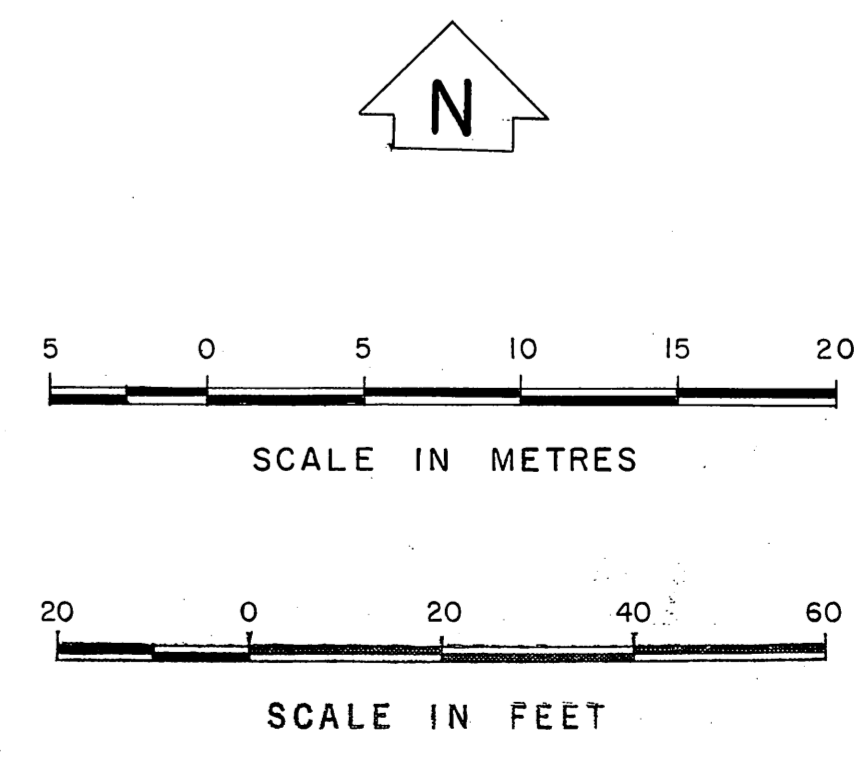
COUNTY ENGINEER
 PREP COR
 R.E. 22159

TRACT NO. 12650
 M. B. 272 7 13

NOTE:
 THIS MAP IS SUPERSEDED
 BY C.S.B. 5524 DUE TO THE
 ERROR OF THE DELTA AND
 THE LENGTH OF CURVE OF
 CENTERLINE OF SLAUSON
 AVE.



VICINITY MAP
 NOT TO SCALE



COUNTY OF LOS ANGELES DEPARTMENT OF COUNTY ENGINEER STEPHEN J. KODNOC - ACTING COUNTY ENGINEER PREPARED BY SURVEY DIVISION RICHARD J. MITCHELL - DIVISION ENGINEER SURVEYED BY <u>E.T. MANKEY</u> CHECKED BY <u>W. MOODYMAN</u> DRAWN BY <u>C. MOTEN</u>	BOUNDARY MAP OF FIRE STATION SITE N° 38 BALDWIN HILLS FOR TOPOGRAPHY SEE SURVEY DIVISION FILE MAP NO. P.T. J-169		COUNTY SURVEYOR'S MAP NO. B-5302 SHEET 1 OF 1 SHEET FILED <u>12/12/76</u> <u>Richard J. Mitchell</u> DEPUTY SURVEYED AUGUST 1976 REFERENCE F.B. 1499	REVISION NO. BY DATE
	BASIS OF BEARINGS THE CENTERLINE OF SLAUSON AVE. (N. 88° 21' 31" W.) AS SHOWN ON C.S.B. 5231-1		JOB NUMBER 0038.64	INDEX MAP NO. 24