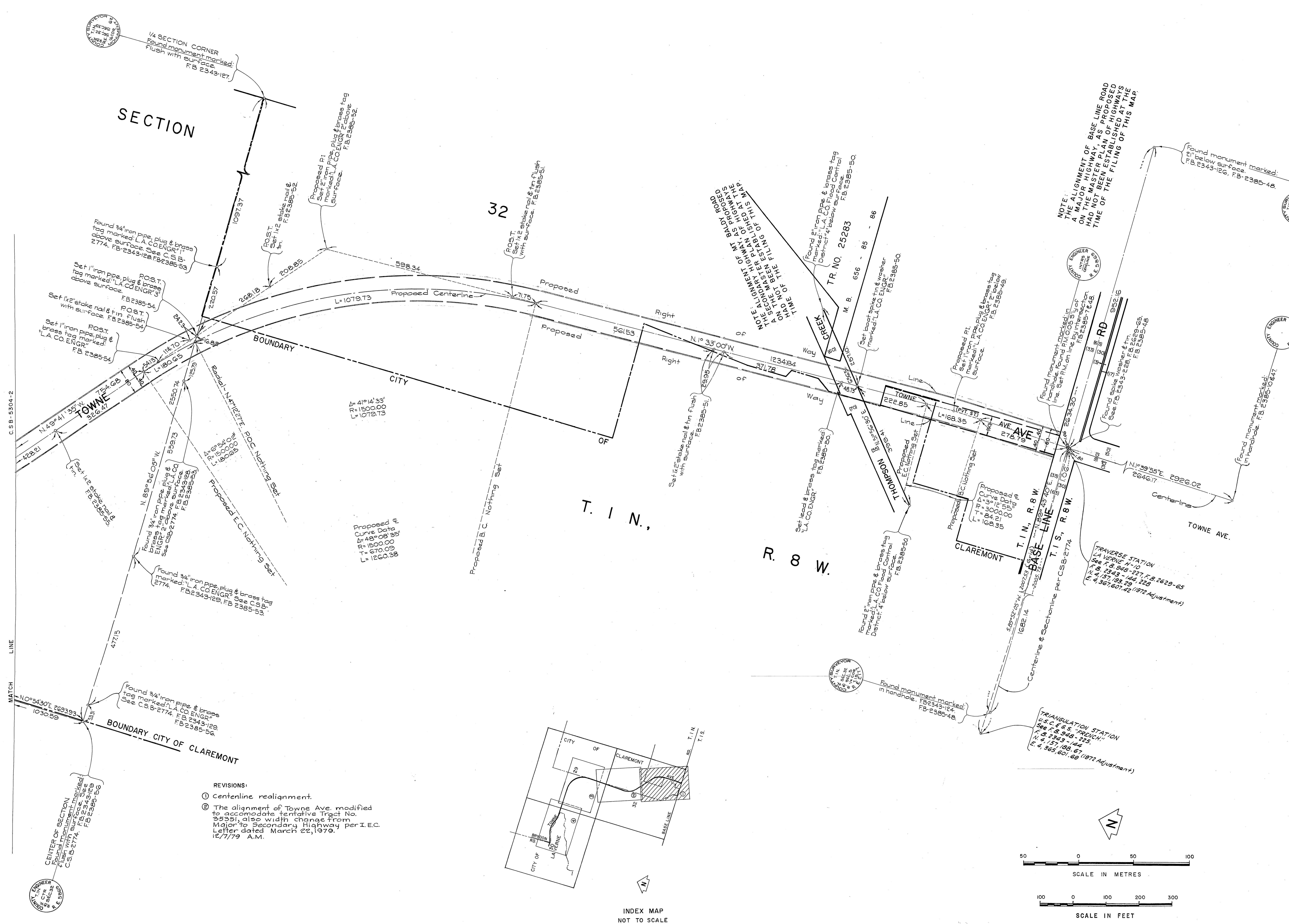
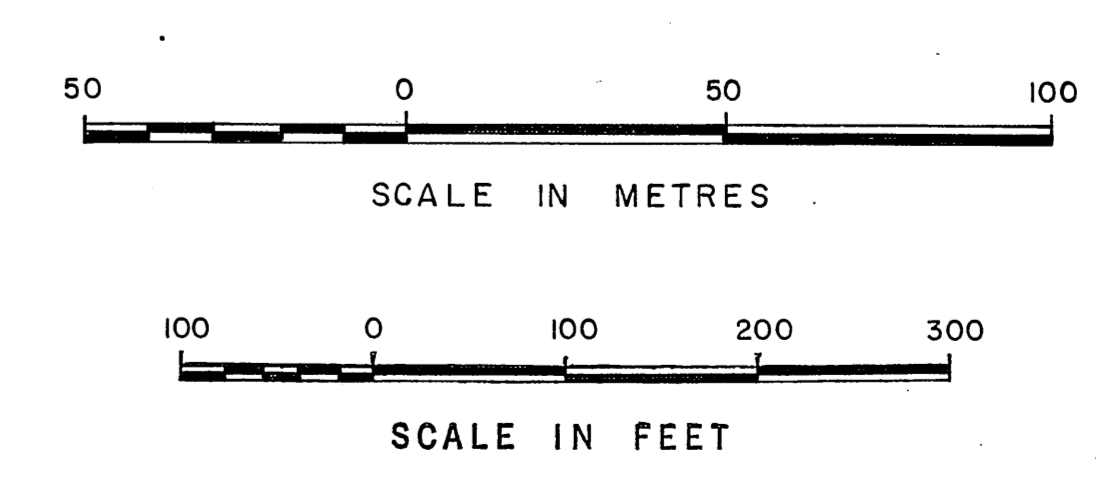
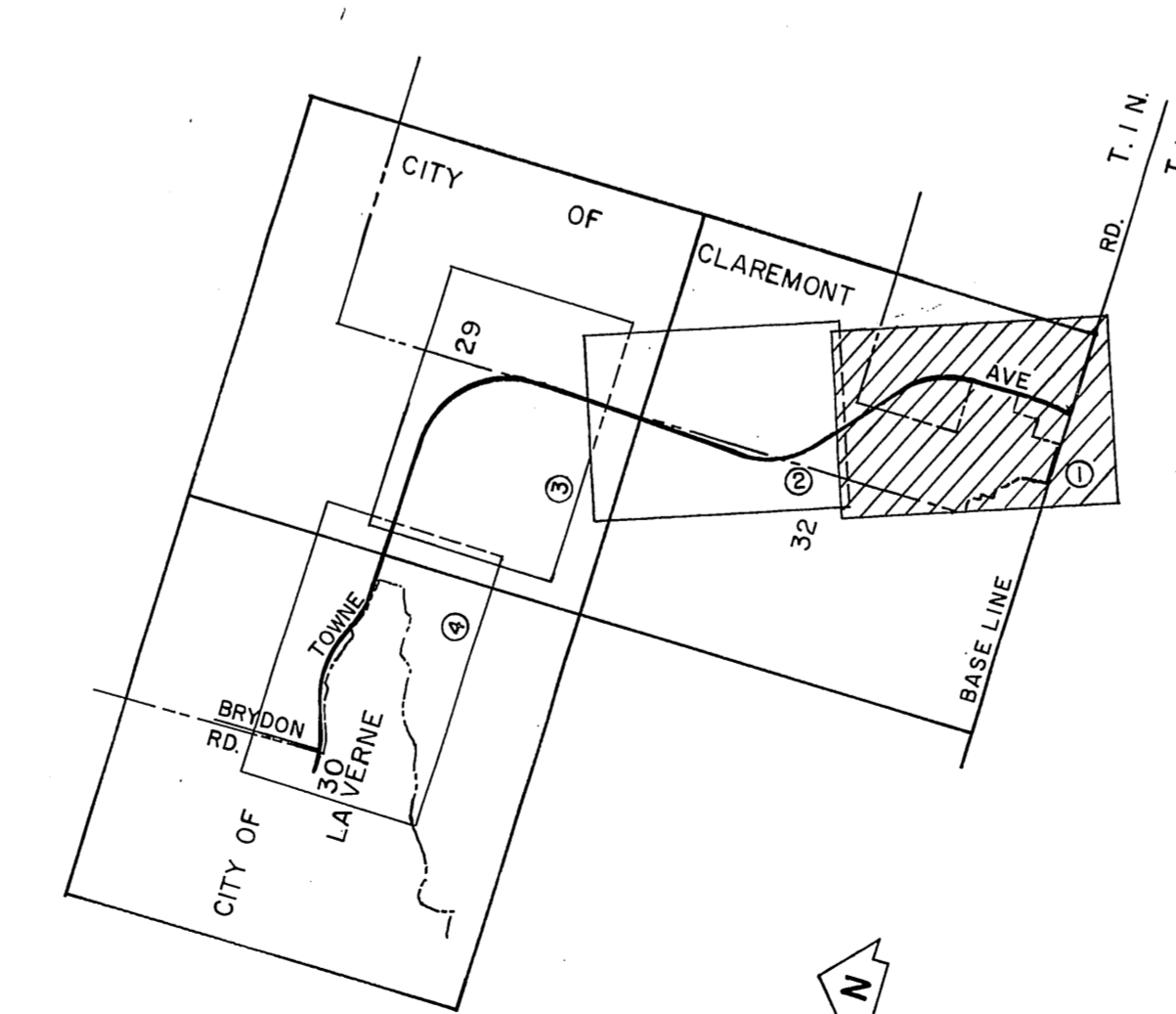


C.S.B. 5304-1



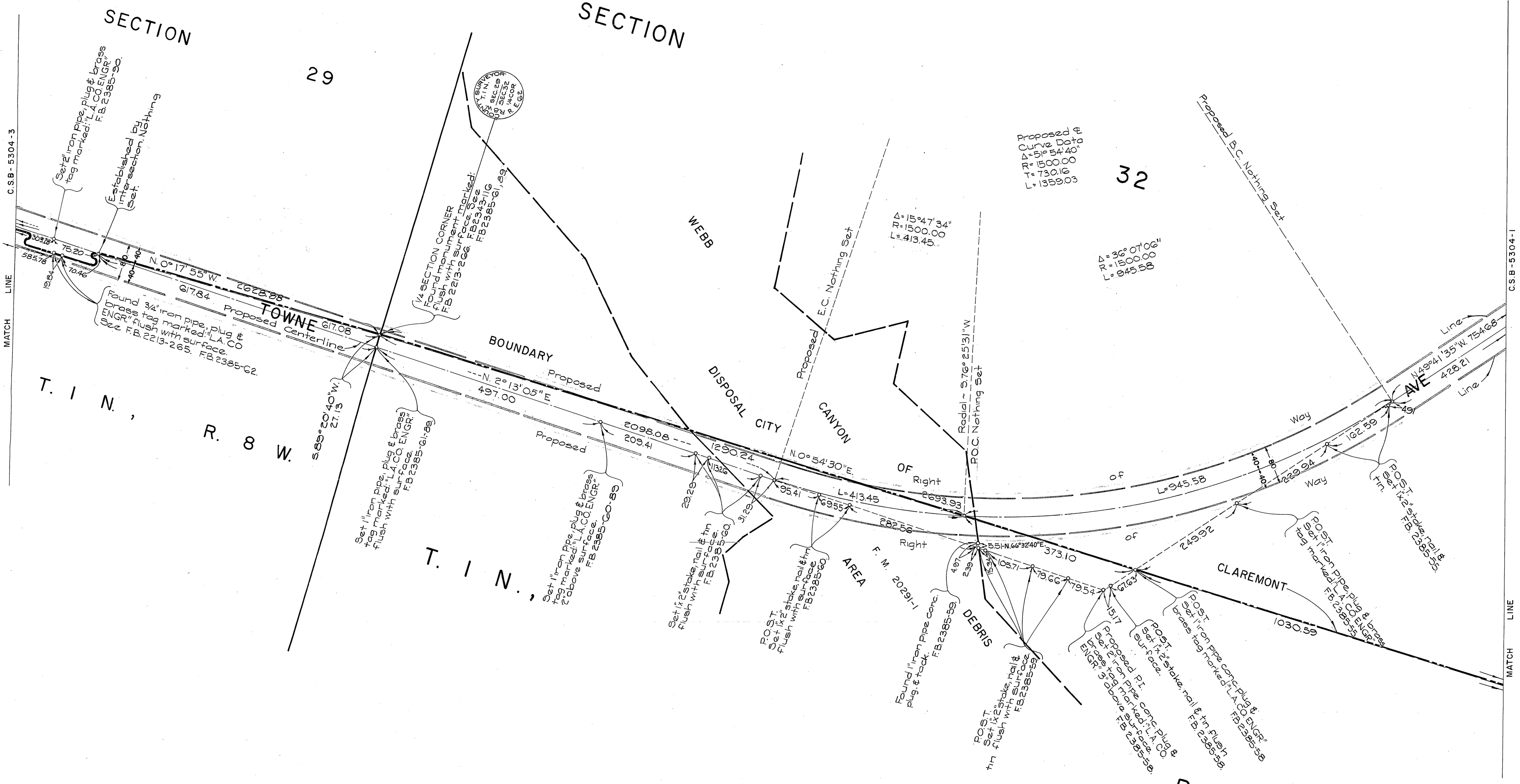
NOTE: THE ALIGNMENT OF BASE LINE ROAD ON THE MAJOR HIGHWAY, AS PROPOSED HAD NOT BEEN ESTABLISHED AT THE TIME OF THE FILING OF THIS MAP.

- REVISIONS:
- Centerline realignment.
  - The alignment of Towne Ave. modified to accommodate tentative Tract No. 25283, also width change from Major to Secondary Highway per I.E.C. Letter dated March 22, 1979. 12/7/79 A.M.

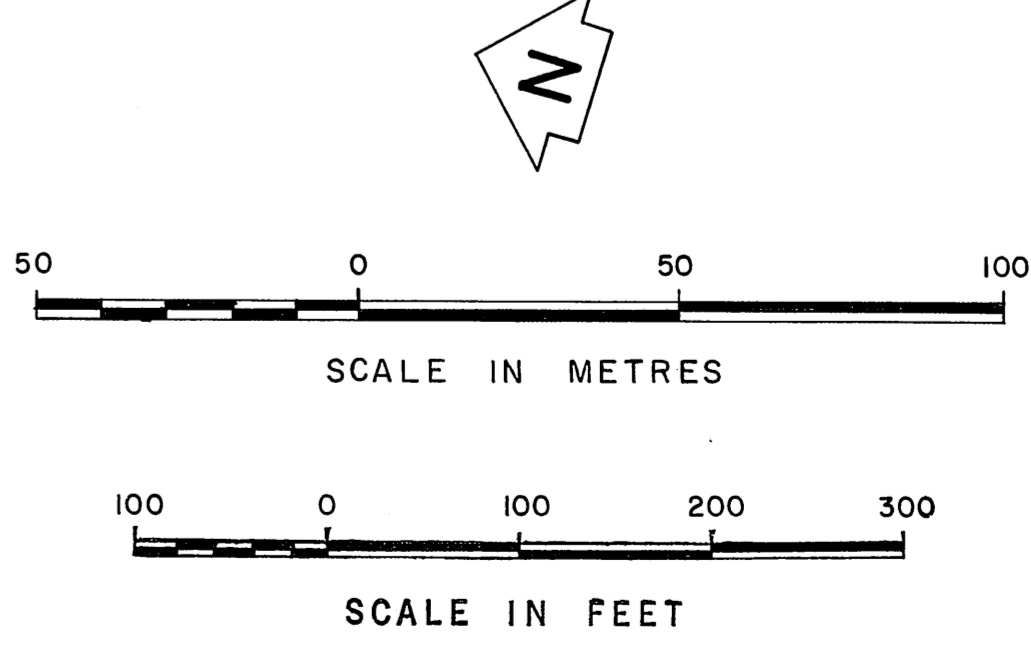
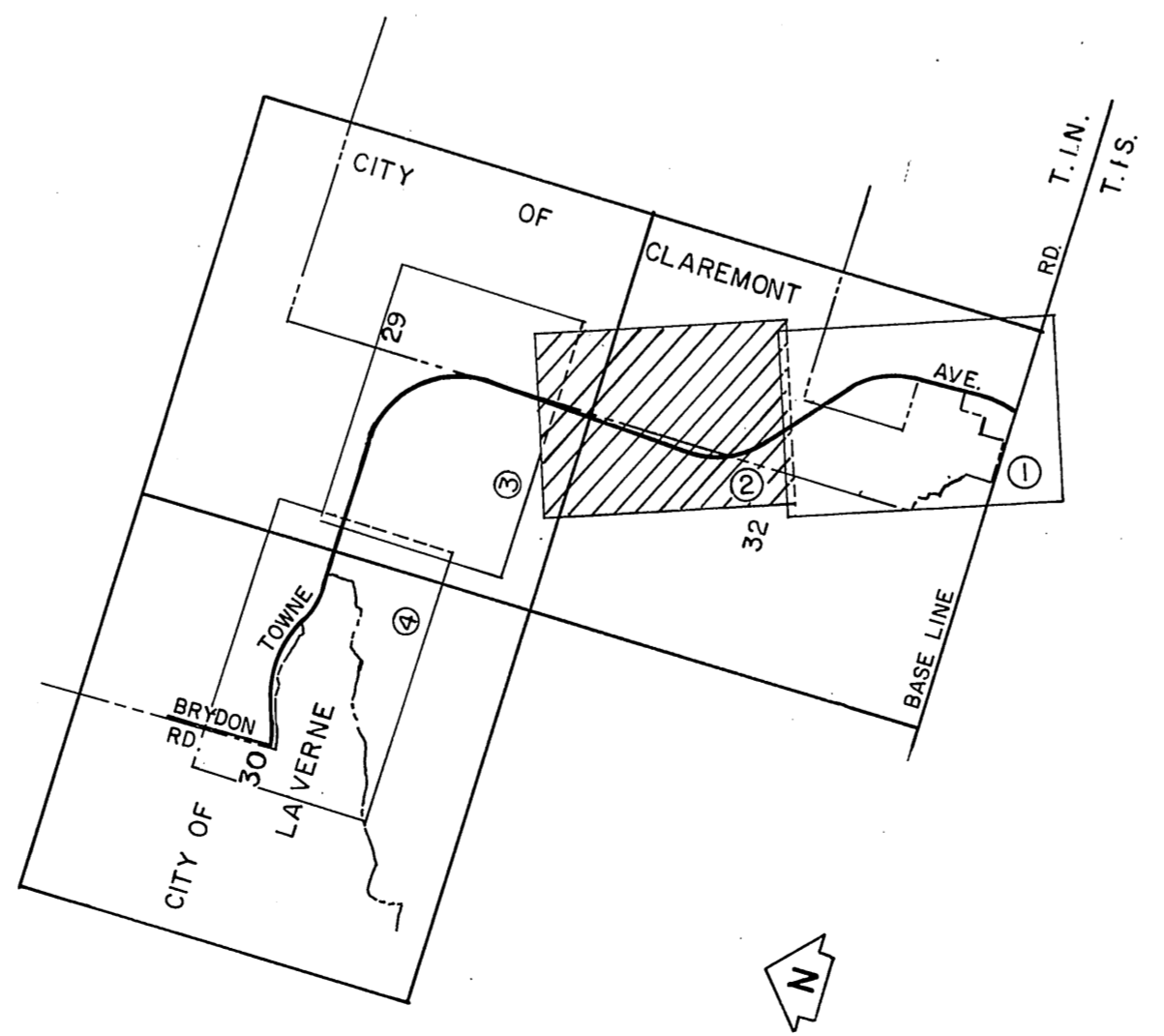


COUNTY OF LOS ANGELES DEPARTMENT OF COUNTY ENGINEER STEPHAN J. KOONCE, ACTING COUNTY ENGINEER PREPARED BY SURVEY DIVISION RICHARD J. MITCHELL - DIVISION ENGINEER SURVEYED BY A.C. GUIZADO CHECKED BY F. MUNOZ DRAWN BY C. MOTEN	ALIGNMENT MAP OF		COUNTY SURVEYOR'S MAP NO.	
	TOWNE AVENUE		B-5304	
	FROM		SHEET 1 OF 4 SHEETS	
	BASE LINE RD. TO BRYDON RD.		FILED: <i>[Signature]</i> 1979	
BASIS OF BEARINGS		MAY 1970 - DECEMBER 1970		
CALIFORNIA COORDINATE SYSTEM, ZONE 7		SURVEYED		
		DEPUTY		
		MAY 1970 - DECEMBER 1970		
		REFERENCE		
		F.B. 2385, F.B. 2343		
		JOB NUMBER		
		INDEX MAP NO.		
		0075.61 49, 50		
		REVISION		
		NO. BY DATE		
		1 JFM 5-27-79		
		2 A.M. 12-7-79		

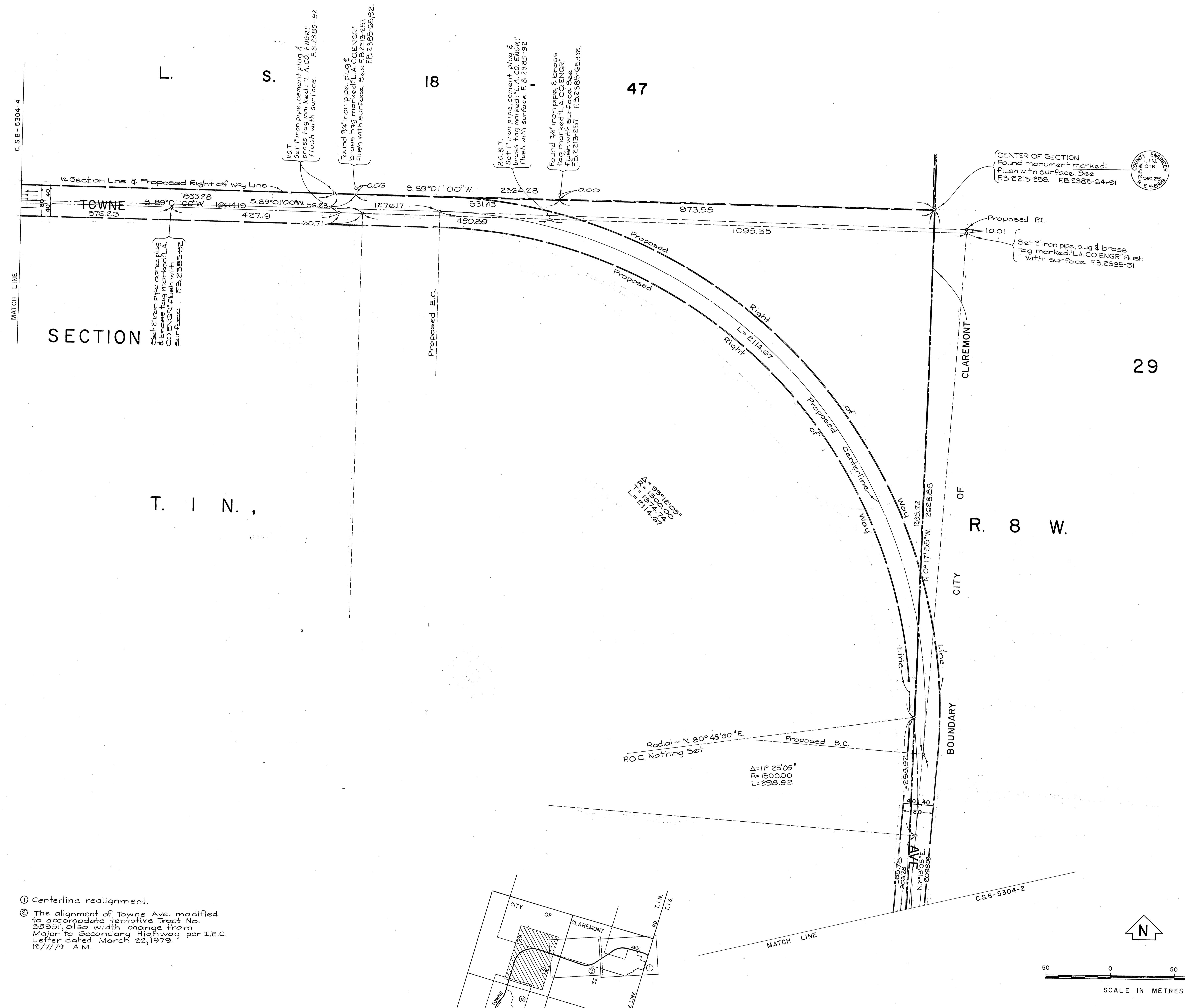
C.S.B. 5304-1



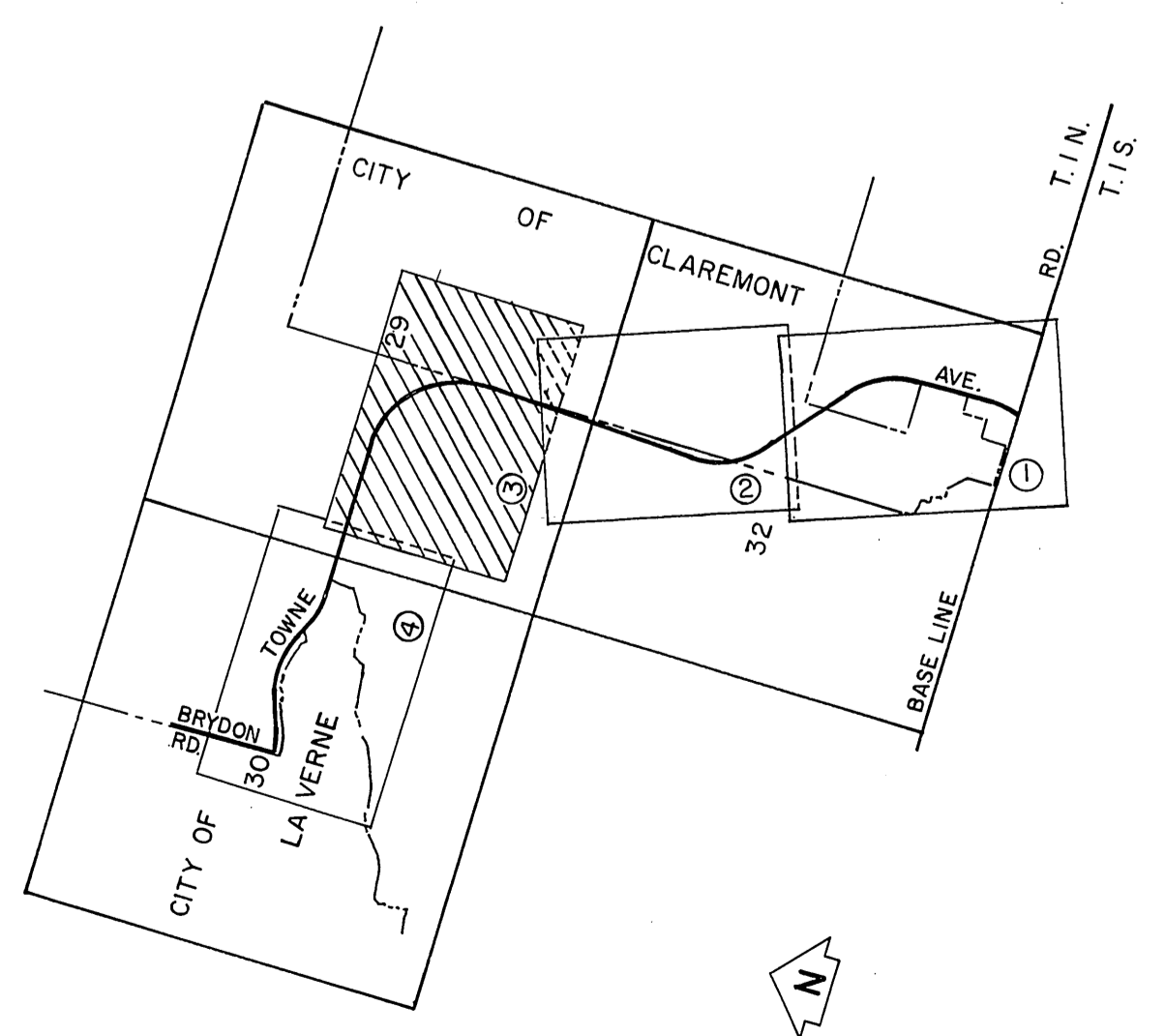
- REVISIONS:
- ① Centerline realignment.
  - ② The alignment of Towne Ave. modified to accommodate tentative Tract No. 55551, also width change from Major to Secondary Highway per I.E.C. Letter dated March 26, 1979. 12/7/79 A.M.



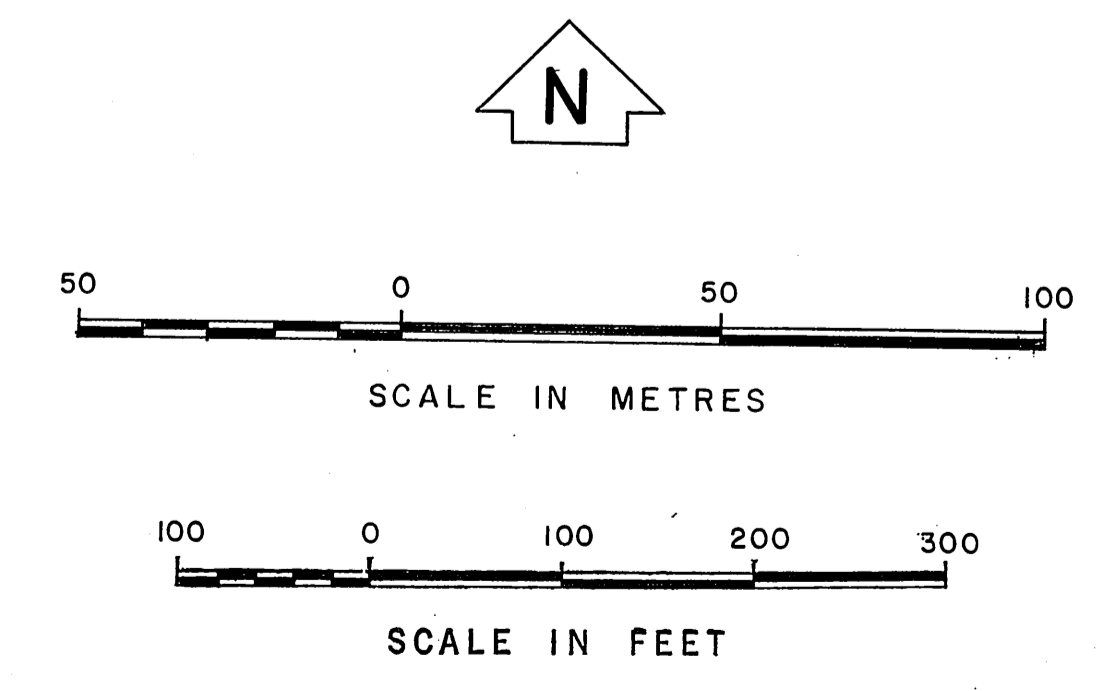
COUNTY OF LOS ANGELES DEPARTMENT OF COUNTY ENGINEER STEPHAN J. KIDNICE - ACTING COUNTY ENGINEER PREPARED BY SURVEY DIVISION RICHARD J. MITCHELL - DIVISION ENGINEER SURVEYED BY <u>A.C. GUZZARO</u> CHECKED BY <u>F. MUNOZ</u> DRAWN BY <u>C. MOTEN</u>	ALIGNMENT MAP OF		COUNTY SURVEYOR'S MAP NO.	
	<b>TOWNE AVENUE</b>		<b>B-5304</b>	
	FROM		SHEET 2 OF 4 SHEETS	
	<b>BASE LINE RD. TO BRYDON RD.</b>		FILED: <u>Nov 2 1977</u> <u>Stephan J. Kidnice, Jr.</u> SEAL COUNTY ENGINEER MAY 1970 - SEPTEMBER 1970 REFERENCE F.B. 2385, F.B. 2343 JOB NUMBER 0075.61 INDEX MAP NO. 49, 50	
BASIS OF BEARINGS		REVISION		
CALIFORNIA COORDINATE SYSTEM, ZONE 7		NO. BY DATE ① JFM 5-27-78 ② A.M. 12-1-79		



- ① Centerline realignment.
- ② The alignment of Towne Ave. modified to accommodate tentative Tract No. 35521, also with change from Major to Secondary Highway per I.E.C. Letter dated March 22, 1979. 12/7/79 A.M.



INDEX MAP NOT TO SCALE



COUNTY OF LOS ANGELES DEPARTMENT OF COUNTY ENGINEER STEPHEN J. KOONCE, ACTING COUNTY ENGINEER PREPARED BY SURVEY DIVISION RICHARD J. MITCHELL, DIVISION ENGINEER SURVEYED BY A.C. SUIZARD CHECKED BY F. MUNOZ DRAWN BY C. MOTEN	ALIGNMENT MAP OF <b>TOWNE AVENUE</b> FROM <b>BASE LINE RD. TO BRYDON RD.</b>		COUNTY SURVEYOR'S MAP NO. <b>B-5304</b>
	SHEET 3 OF 4 SHEETS FILED: <i>[Signature]</i> 19 77 DEPUTY MAY 1970 SURVEYED REFERENCE F.B. 2385, F.B. 2343		NO. BY DATE ① J.E.M. 5-27-79 ② A.M. 12-7-79
BASIS OF BEARINGS CALIFORNIA COORDINATE SYSTEM, ZONE 7			JOB NUMBER 0075.61
			INDEX MAP NO. 49, 50

