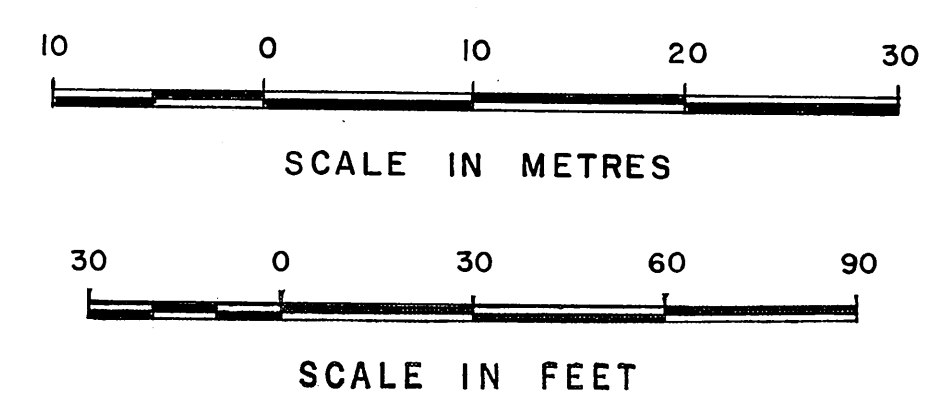
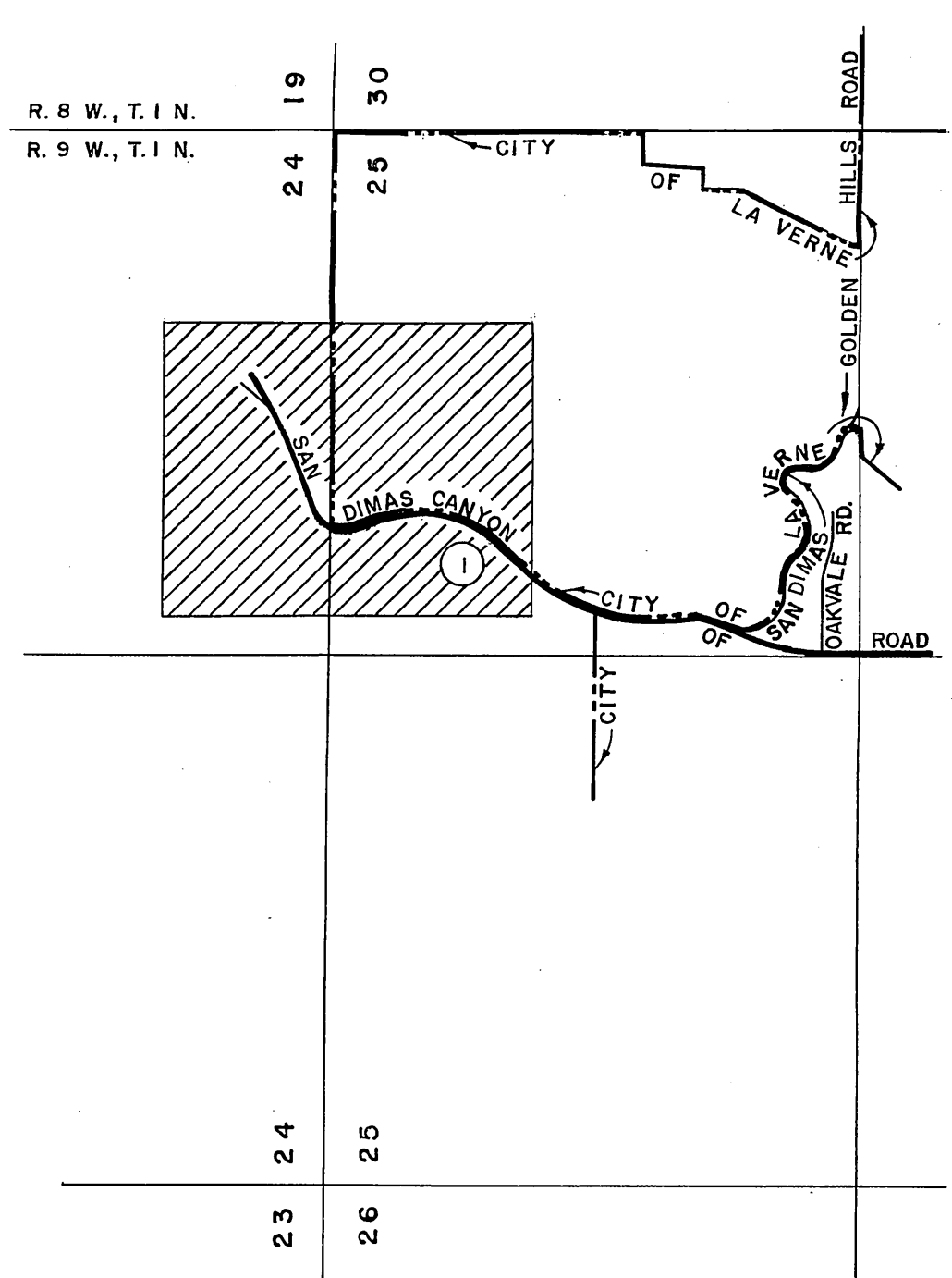
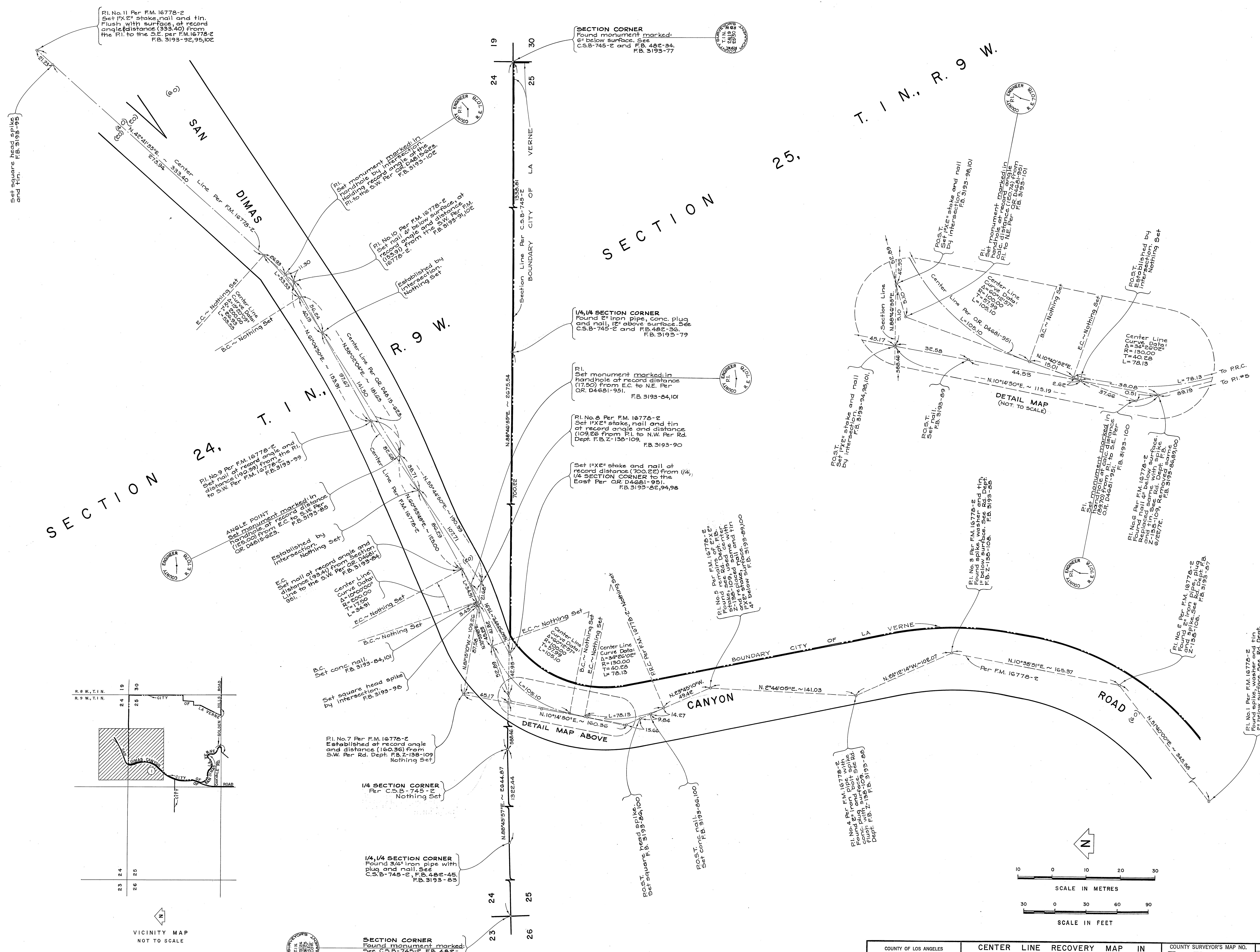


C-2-B-2301



NOTE:
THIS SURVEY WAS MADE TO ESTABLISH THE RELATIONSHIP BETWEEN THE CENTER LINE OF SAN DIMAS CANYON RD. AS DESCRIBED IN O.R. D4815-623 AND THE CENTER LINE AS SHOWN ON F.M. 16778-2. NEITHER OF THESE CENTER LINES IS THE CURRENT CENTER LINE IN THIS AREA.

COUNTY OF LOS ANGELES DEPARTMENT OF COUNTY ENGINEER STEPHEN J. KOONCE - ACTING COUNTY ENGINEER PREPARED BY SURVEY DIVISION RICHARD J. MITCHELL - DIVISION ENGINEER SURVEYED BY A.C. WUZZARD - P.E.T.R.I. CHECKED BY R. BARTHOLOMEW DRAWN BY A. MITCHELL	CENTER LINE RECOVERY MAP IN SAN DIMAS CANYON ROAD IN THE VICINITY OF THE S'LY. LINE OF SECTION 24, T. 1 N., R. 9 W.	COUNTY SURVEYOR'S MAP NO. B-5307	REVISION NO. BY DATE
		SHEET 1 OF 1 SHEETS FILED: <i>July 25 1977</i> SURVEYED OCT 1971 - MAY 1972 REFERENCE F.B. 3193	JOB NUMBER 0303.00

C-2-B-2301